



CITY OF
**West
Linn**

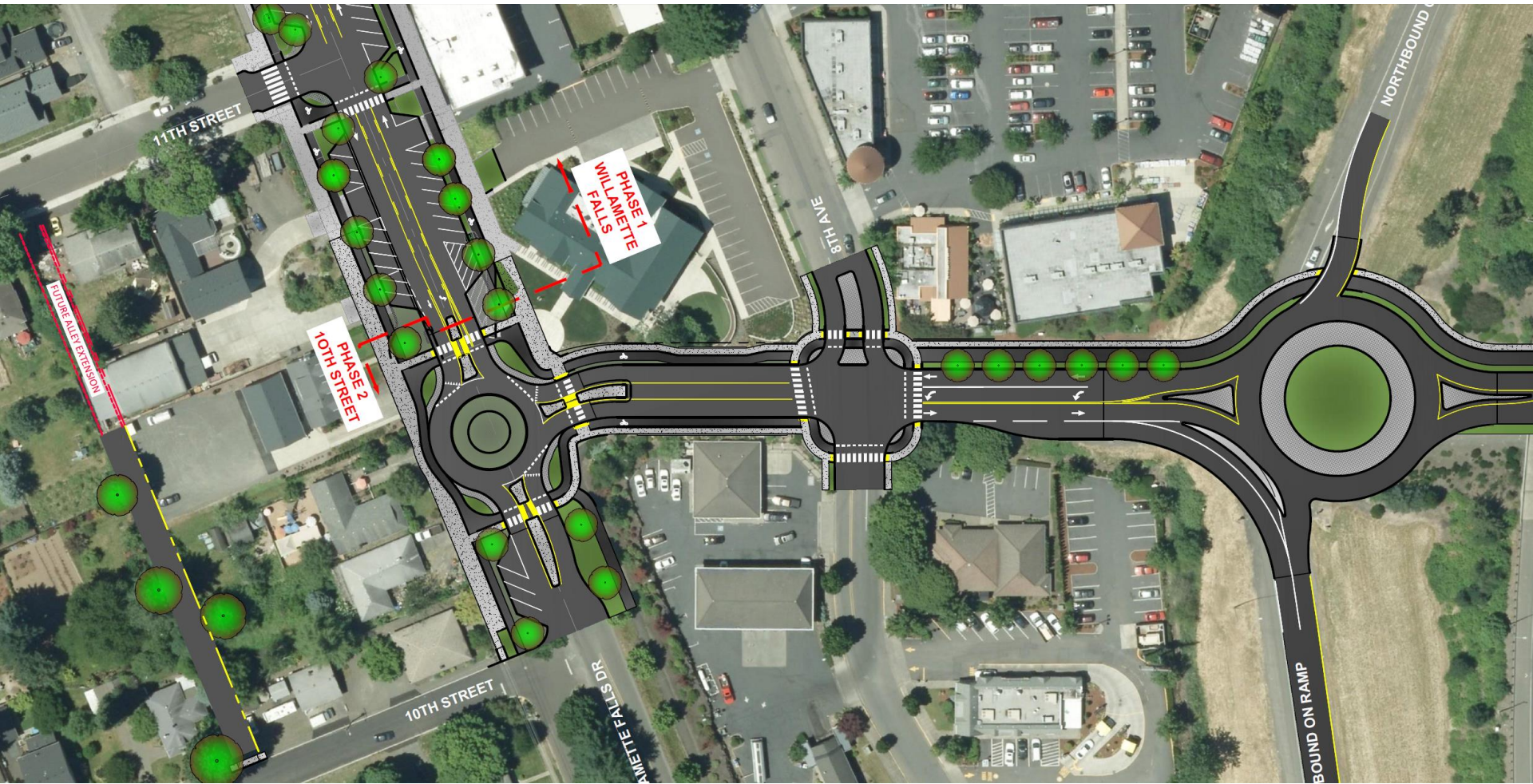
10th Street / Salamo Road Update

City Council Work Session – Sept 21, 2020

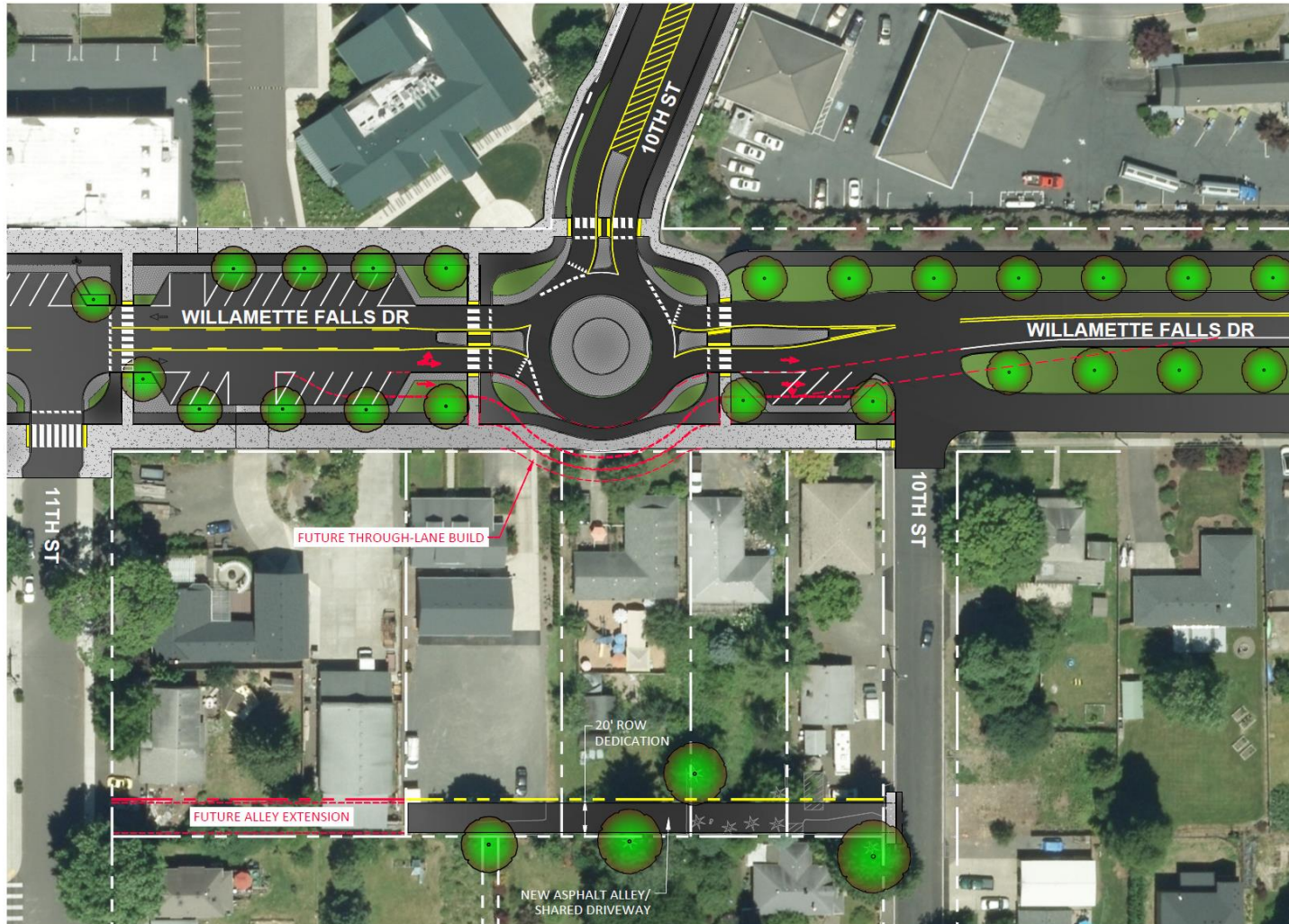
10th Street / Salamo Road Draft Layout



10th Street – WFD to I205 Draft Layout



10th Street – WFD to I205 Draft Layout



10th Street – WFD to I205 Draft Layout

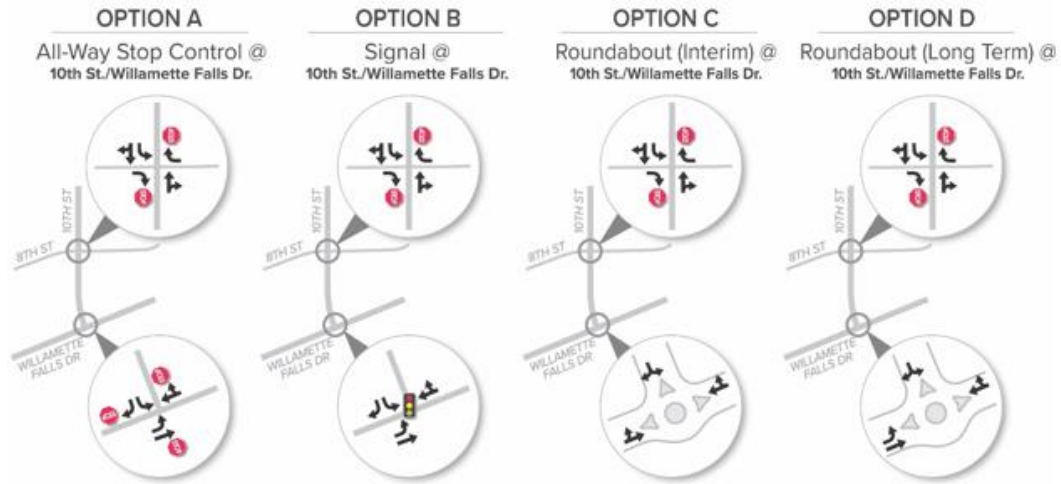


Table 1: 2020 PM Peak Intersection Operations - 10th Street/Willamette Falls Dr

Scenario	Intersection Control	Mobility Target	2020 PM Peak Hour		
			Delay	LOS	v/c
Option A	All-way stop controlled	LOS D	82	F	1.30
Option B	Signal	LOS D	21	C	0.73
Option C	Single Lane Roundabout (Interim)	LOS D	37	E	1.03

← Existing Condition

Table 2: 2040 PM Peak Intersection Operations - 10th Street/Willamette Falls Dr

Scenario	Intersection Control	Mobility Target	2040 PM Peak Hour		
			Delay	LOS	v/c
Option A	All-way stop controlled	LOS D	155	F	1.49
Option B	Signal	LOS D	21	C	0.83
Option C	Single Lane Roundabout (Interim)	LOS D	110	F	1.32
Option D	Multilane Roundabout (Long Term)	LOS D	11	B	0.64

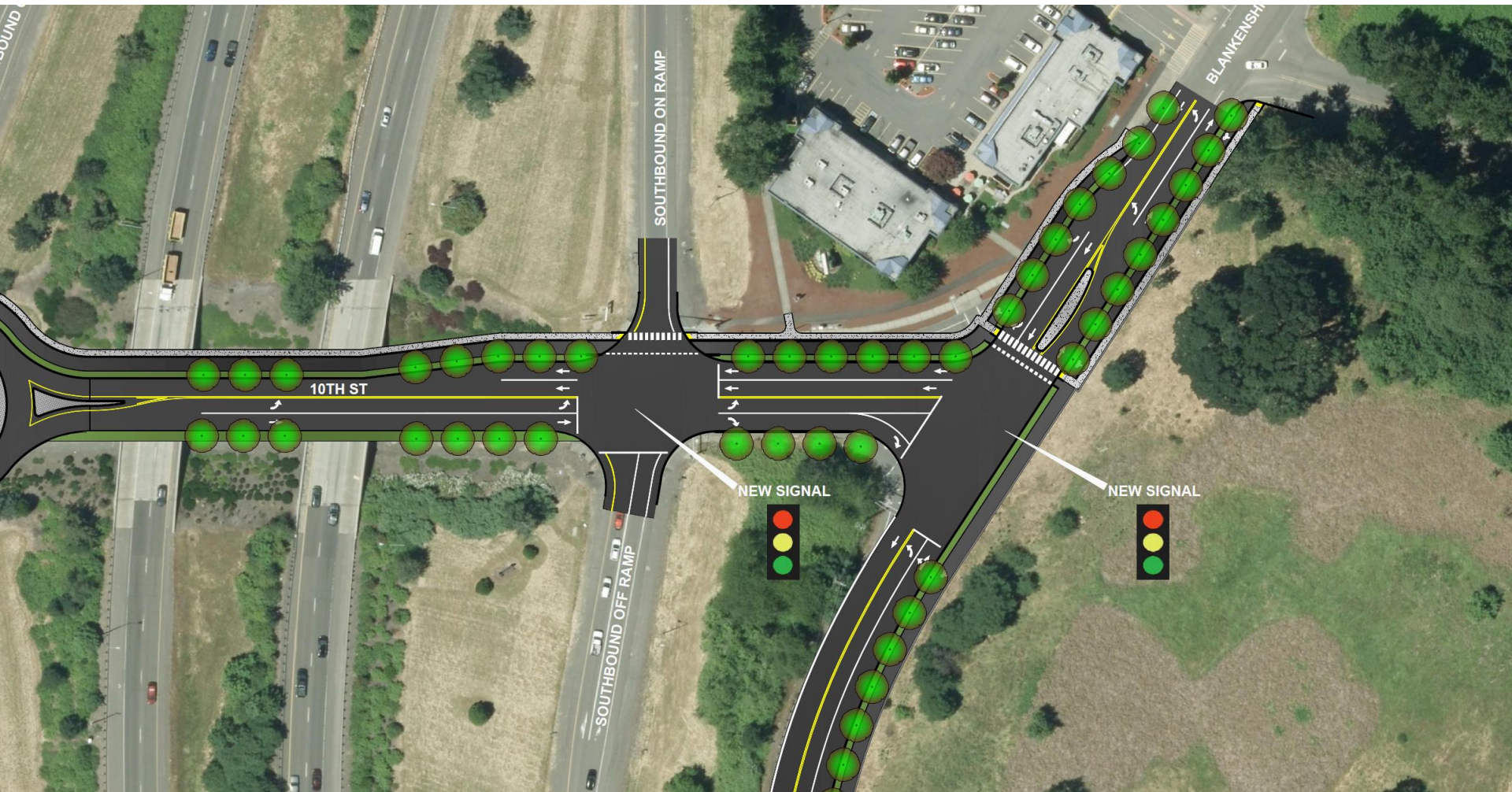
Bolded Red indicates intersection does not meet mobility targets.

Delay = Average Intersection Delay (sec.); LOS = Level of Service of Intersection
 v/c = Volume-to-Capacity Ratio of Worst Approach Lane (all-way stop controlled intersections, roundabouts),
 Overall Intersection Volume-to-Capacity Ratio (signalized intersections)

Bolded Red indicates intersection does not meet mobility targets.

Delay = Average Intersection Delay (sec.); LOS = Level of Service of Intersection
 v/c = Volume-to-Capacity Ratio of Worst Approach Lane (all-way stop controlled intersections, roundabouts),
 Overall Intersection Volume-to-Capacity Ratio (signalized intersections)

10th Street – I205 to Salamo Road Draft Layout



Salamo Road Draft Layout

