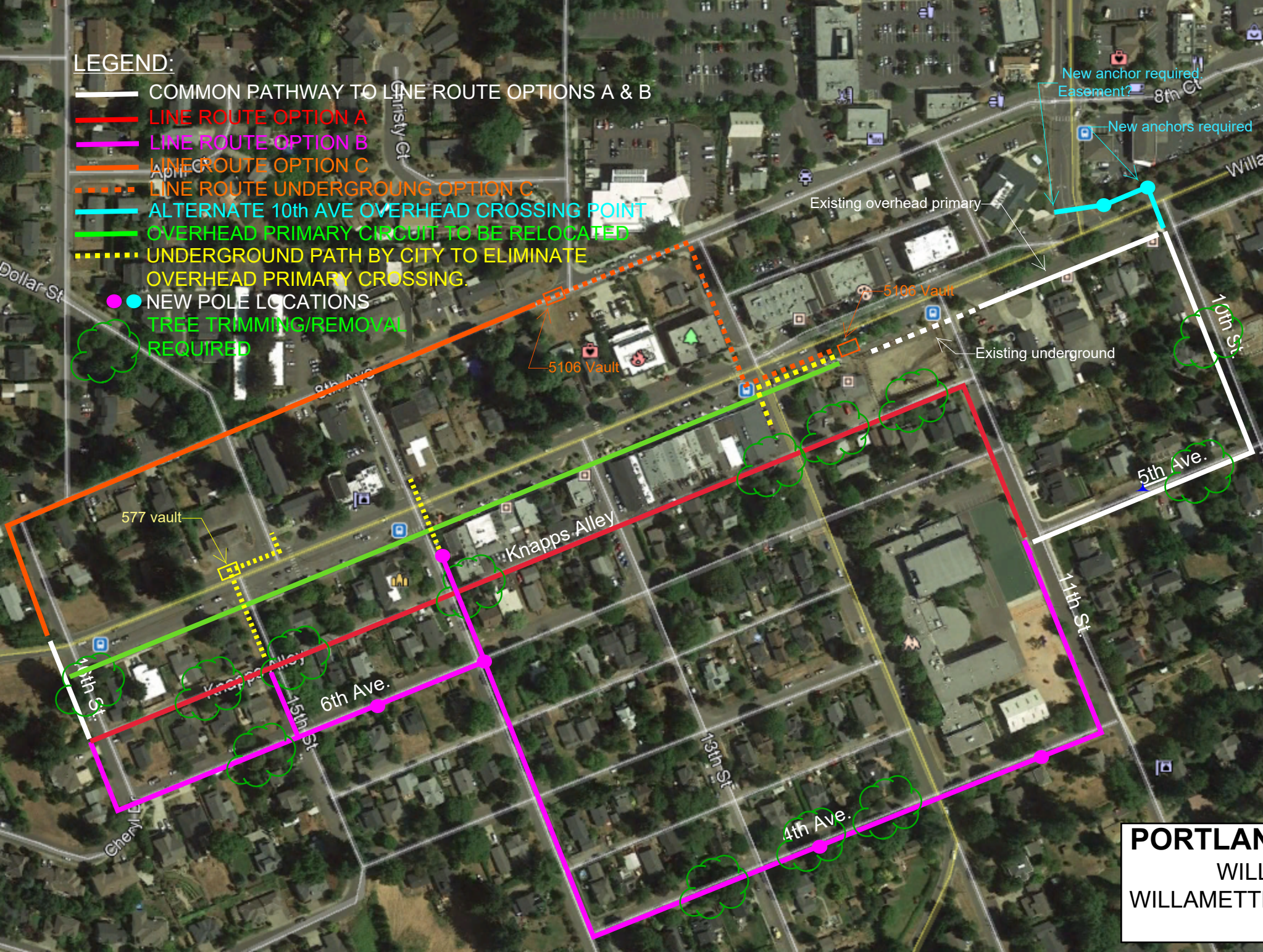


LEGEND:

- COMMON PATHWAY TO LINE ROUTE OPTIONS A & B
- LINE ROUTE OPTION A
- LINE ROUTE OPTION B
- LINE ROUTE OPTION C
- - - LINE ROUTE UNDERGROUND OPTION C
- ALTERNATE 10th AVE OVERHEAD CROSSING POINT
- OVERHEAD PRIMARY CIRCUIT TO BE RELOCATED
- - - UNDERGROUND PATH BY CITY TO ELIMINATE OVERHEAD PRIMARY CROSSING.
- ● NEW POLE LOCATIONS
- ☁ TREE TRIMMING/REMOVAL REQUIRED



NOTES:

Option A -

- Advantages*
- .Uses existing pole route
 - .Shorter distance than Option B route.
- Disadvantages*
- .Uses existing narrow alley with clearance issues to adjacent houses and buildings. This route is not recommended.
 - .Easements will be required in several locations.
 - .Significant tree issues.

Option B -

- Advantages*
- .Keeps primary circuit within existing road right of way.
 - .Easements for aerial encroachments will not be required.
 - .Follows existing pole pathways requiring only a few new poles.
- Disadvantages*
- .Longer line route than Option A.
 - .Significant tree issues.

Option C -

- Advantages*
- .Keeps primary circuit within existing road right of way.
 - .Easements for aerial encroachments will not be required.
 - .Follows existing pole pathways requiring only a few new poles.
 - .Shorter line route compared to options A & B.
- Disadvantages*
- .Significant tree issues.
 - .Requires underground section. Pathway to be provided by the city of West Linn. Pathway includes 2-6" conduits, 1-4" conduit, 1-3" conduit and 2-5106 vaults. Pad for transformer. Pad to be located on 12th Ave. north of Willamette Falls Drive in right of way.

For primary circuits crossing Willamette Falls Drive an option is presented (dashed yellow line) showing underground pathway to eliminate overhead primary crossings. Pathway would be the responsibility of the City of West Linn.

PORTLAND GENERAL ELECTRIC
 WILLAMETTE FALLS DRIVE
 WILLAMETTE - SULLIVAN 12.5 KV PRIMARY
 ROUTE OPTIONS