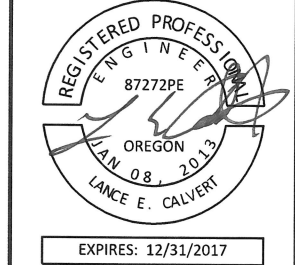




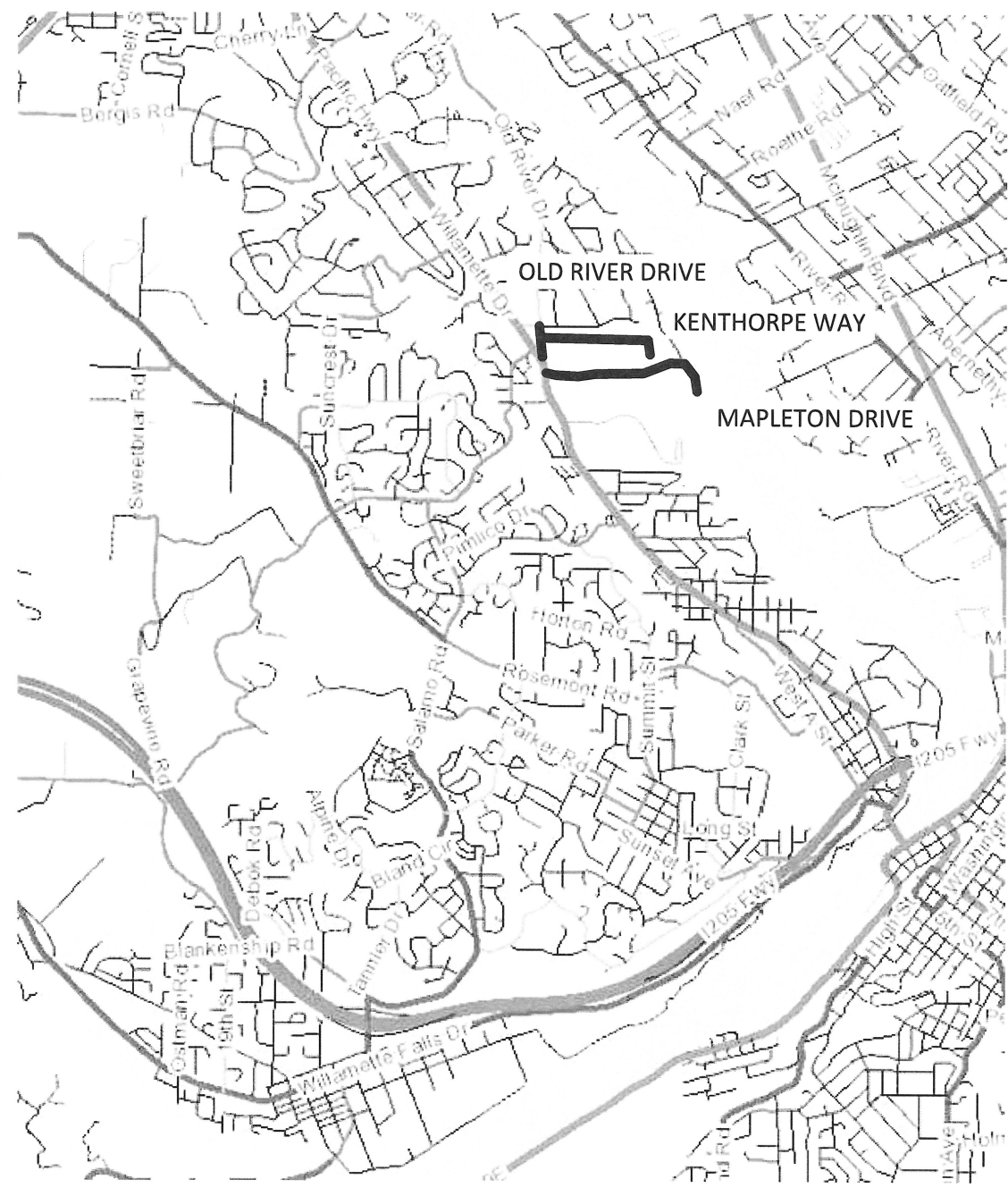
CITY OF WEST LINN 2017 ROAD PROGRAM PW-17-01



CITY OF WEST LINN
22500 SALAMO ROAD
WEST LINN, OR 97068
WESTLINNOREGON.GOV
PHONE: (503) 722-5500
FAX: (503) 656-4106



CONTRACTOR TBD



SHEET INDEX			
SHEET TITLE			SHEET NO.
COVER SHEET			CS
GENERAL NOTES			GN
QUANTITY SHEET			QS
STANDARD DETAILS			D1 - D4
STREET IMPROVEMENTS			
STREET	FROM	TO	SHEET NOS.
KENTHORPE WAY	OLD RIVER DRIVE	DEAD END	K1 - K7
MAPLETON DRIVE	WILLAMETTE DRIVE (OR-43)	DEAD END	M1 - M9
OLD RIVER DRIVE	DEAD END	CEDAROAK DRIVE	O1 - O3

CITY OF WEST LINN
2017 ROAD PROGRAM
Cover Sheet

PROJECT DATA	
PROJECT NO:	PW-17-01
DESIGNED BY:	LCALVERT
DRAWN BY:	MPALMER
CHECKED BY:	ELAIS
DATE ISSUED:	5/24/17

REVISION	
DATE	DESCRIPTION

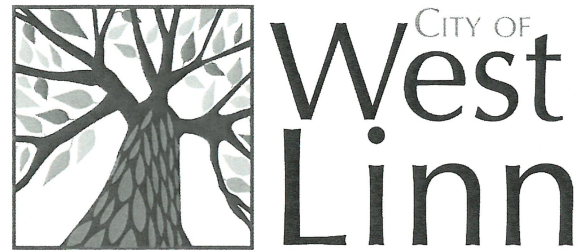
COVER SHEET
CS
1 OF 26

GENERAL NOTE
All work within the public right-of-way shall conform to the current ODOT Oregon Standard Specifications for Construction

GIS BASE MAP INFORMATION
Data Source: West Linn GIS
OGIC Disclaimer: This product is for informational purposes and may not have been prepared for, or be suitable for legal, engineering, or surveying purposes. Users of this information should review or consult the primary data and information sources to ascertain the usability of the information.

ATTENTION
Oregon law requires you to follow rules adopted by the Oregon Utility Notification Center. Those rules are set forth in OAR 952-001-0010 through OAR 952-001-0090. You may obtain copies of the rules by calling the center. (Note: the telephone number for the Oregon Utility Notification Center is (503) 232-1987).





CITY OF WEST LINN 2017 ROAD PROGRAM PW-17-01



CITY OF WEST LINN
22500 SALAMO ROAD
WEST LINN, OR 97068
WESTLINN.OREGON.GOV
PHONE: (503) 722-5500
FAX: (503) 656-4106



CONTRACTOR TBD

CITY OF WEST LINN
2017 ROAD PROGRAM

General Notes

GENERAL NOTES:

- All construction shall conform to the latest City of West Linn Public Works Standard Construction Specifications and Standard Drawings. The ODOT standard specifications for construction will apply for measurement and payment.
- This set of plans has been reviewed for compliance with City of West Linn requirements prior to issuance for construction. However such review shall not prevent the City Engineer from requiring correction of errors or omissions in plans found to be in violation of any law or ordinance.
- The City Engineer does not warrant any quantities shown on these plans. Quantities are estimates. Unit pricing to be used for all construction.
- The Engineering Division, Inspection Section shall be notified twenty-four (24) hours prior to any construction work by telephone at 503-722-5501. Any work concealed without inspection shall be subject to removal and replacement at the Contractor's expense.
- Any approved set of plans must be available on the job site at all times. The contractor's representative (capable of communicating with the City's representatives) shall be on the job at all times the work is being pursued.
- The Contractor is responsible to provide emergency telephone numbers to the City of West Linn at time of receiving Project Notice to Proceed and have personnel available 24-hours a day to respond to emergencies. If the City is required to respond and make emergency repairs on behalf of the Contractor, the Contractor is responsible to reimburse the City for all costs incurred.
- It is understood that there will be interfering utilities, service laterals, and other underground pipes, drains or structures encountered on underground projects that are not shown or are shown incorrectly on the plans and/or have not been previously discovered in the field. Contractor agrees this is a normal and usual occurrence in the construction of underground improvements. Furthermore, bidders understand and agree that work in some cases must be done in close proximity to said utilities and underground pipes, drains, and structures which may require a change in operations and may cause sloughing of the trench, additional traffic control, additional pavement and backfill costs, and time. The contractor agrees that a reasonable number of these occurrences are usual and ordinary on underground projects and are reflected in the bid and plan of operation.
- It is the responsibility of the contractor to obtain any and all other permits and meet any requirements set forth by other agencies or utilities which have jurisdiction at the contractors expense.

TRAFFIC CONTROL GENERAL NOTES:

- No road closure shall be allowed without City Engineer's prior approval as delegated by the City Manager.
- The Contractor shall provide traffic control plan for City Approval
- Traffic control shall conform to the ODOT Temporary Traffic Control Handbook and

UTILITY PROVIDERS			
WATER:	CITY OF WEST LINN	PUBLIC WORKS	503-656-6081
STORM:	CITY OF WEST LINN	PUBLIC WORKS	503-656-6081
SEWER:	CITY OF WEST LINN	PUBLIC WORKS	503-656-6081
POWER:	PGE	BOBBIE DANIELSON	503-742-8483
STREET LIGHTS:	PGE	JEFF STEIGLEDER	503-726-5728
GAS:	NW NATURAL	DAVID BENTON	503-226-4211 X2357
CATV:	COMCAST	BOB BOBMILLAR	360-828-3559
PHONE:	QWEST	KENNETH SCIULLI	503-242-0304

MUTCD. The Contractor shall submit a Traffic Control Plan to the City of West Linn Engineering Division for review and acceptance a minimum of 48-hours prior to construction. A copy of the accepted Traffic Control Plan must remain on the job site at all times.

- Maintain vehicular, bicycle, pedestrian, bus, and emergency vehicle access to area homes throughout construction.

LEGEND:

- W —— WATER MAIN
- SS —— SANITARY SEWER
- SD —— STORM DRAIN
- G —— GAS LINE
- OH —— OVERHEAD WIRES
- 0+00 0+02
|-----|
ALIGNMENT STATION
- ⊗ WATER VALVE
- Ⓢ Ⓣ MANHOLE
- ≡ □ CATCH BASIN
- PROPERTY LINE

CONSTRUCTION NOTES:

- Contractor shall provide erosion control best management practices per City of West Linn Standards. Provide catch basin protection and continual sweeping so that no mud, sediment, or rock is left on the streets.
- The contractor is responsible for all construction surveying and construction staking for the project.
- Water used for construction must be filled at the designated tanker fill sites located next to 1970 8th Ave. and Wilderness Park. No hydrant meters will be provided
- Contractor shall provide ingress and egress to residential driveways with limited delay.
- No vehicle shall be permitted to work on this project that has more than one (1) drop axle in which raising the additional axles would cause the vehicle to exceed legal load limits. This includes a rear tag axle.
- Working Hours: 7:00 AM - 5:00 PM Monday - Friday
 9:00 AM - 5:00 PM Saturday - Sunday & Holidays

ADDITIONAL NOTES:

- Contractor shall be responsible for all construction surveying and construction staking. Final grades as determined by City Engineer.
- All existing asphalt/concrete shall be sawcut for removal with no additional compensation.
- Water line shown as planned. Actual line and valve placement may vary from plan because construction is ongoing at the time of design.
- Portland cement quantities are based on an estimated ratio of 5% dry weight of asphalt concrete. Final mix to be approved by City Engineer.
- Maximum 10 working days between asphalt removal and paving.
- All driveways consist of 4-inches of Level 2, 1/2 Inch ACP over 10" aggregate base.

GENERAL NOTE

All work within the public right-of-way shall conform to the current ODOT Oregon Standard Specifications for Construction

GIS BASE MAP INFORMATION

Data Source: West Linn GIS
OGIC Disclaimer: This product is for informational purposes and may not have been prepared for, or be suitable for legal, engineering, or surveying purposes. Users of this information should review or consult the primary data and information sources to ascertain the usability of the information.

ATTENTION

Oregon law requires you to follow rules adopted by the Oregon Utility Notification Center. Those rules are set forth in OAR 952-001-0010 through OAR 952-001-0090. You may obtain copies of the rules by calling the center. (Note: the telephone number for the Oregon Utility Notification Center is (503) 232-1987).



PROJECT DATA

PROJECT NO:	PW-17-01
DESIGNED BY:	LCALVERT
DRAWN BY:	MPALMER
CHECKED BY:	ELAIS
DATE ISSUED:	5/24/17

REVISION

DATE	DESCRIPTION

NOTES SHEET

GN



CITY OF WEST LINN
 22500 SALAMO ROAD
 WEST LINN, OR 97068
 WESTLINNOREGON.GOV
 PHONE: (503) 722-5500
 FAX: (503) 656-4106



EXPIRES: 12/31/2017

CONTRACTOR TBD

CITY OF WEST LINN
 2017 ROAD PROGRAM

Quantity Summary

PROJECT DATA

PROJECT NO:	PW-17-01
DESIGNED BY:	LCALVERT
DRAWN BY:	MPALMER
CHECKED BY:	ELAIS
DATE ISSUED:	5/24/17

REVISION

DATE	DESCRIPTION

QUANTITY SHEET

QS

ITEM	ODOT SPECIFICATION #	DESCRIPTION	UNIT	KENTHORPE WAY (K1 - K6)	MAPLETON DRIVE (M1 - M8)	OLD RIVER DRIVE (O1 - O2)	TOTAL
1	SP-2	CONSTRUCTION SURVEY	LS	-	-	-	1
2	00210.90	MOBILIZATION	LS	-	-	-	1
3	00225.90(a)(2)	TEMPORARY WORK ZONE TRAFFIC CONTROL, COMPLETE	LS	-	-	-	1
4	00280.90(a)	EROSION CONTROL	LS	-	-	-	1
5	SP-5	STREET TREES	EA	3	-	-	3
6	00310.92(c)	REMOVAL OF WALKS AND DRIVEWAYS, 12 INCHES	SY	1279	1393	373	3045
7	00330.93(d)	GENERAL EXCAVATION	CY	57	39	-	96
8	00331.90	12 INCH SUBGRADE STABILIZATION (WIDENING)	SY	672	-	102	774
9	00490.90(e)	ADJUSTING CATCH BASINS	EA	1	-	-	1
10	00344.90(a)	TREATED SUBGRADE, 12 INCHES THICK	SY	6041	-	1568	7609
11	00344.90(c)	PORTLAND CEMENT	TON	177	-	46	223
12	00445.91(b)	12 INCH REINFORCED CONCRETE PIPE	LF	102	-	-	102
13	00470.90(d)	CONCRETE INLETS, TYPE GUTTER INLET 2 1/2 A (WL-600)	EA	2	-	-	2
14	00480.90	DRAINAGE CURB (AC)	LF	-	255	-	255
15	00490.90(a)	MINOR ADJUSTMENT OF MANHOLES	EA	11	18	1	30
16	00445.91(b)	15 INCH REINFORCED CONCRETE PIPE	LF	-	30	-	30
17	00490.90(d)	ADJUSTING BOXES	EA	4	32	11	47
18	SP-1	ASPHALT PULVERIZING, 12 INCHES	SY	5369	-	1466	6835
19	SP-3	LANDSCAPE RESTORATION	LS	-	-	-	1
20	00610.90	RECONDITION EXISTING ROADWAY	LS	-	-	-	1
21	00310.91(a)	REMOVAL OF STRUCTURES AND OBSTRUCTIONS	LS	-	-	-	1
22	00641.90(g)	AGGREGATE BASE, 10 INCHES THICK (DRIVEWAYS)	SY	1279	1393	373	3045
23	00759.90(e)	CONCRETE WALKS (WL-508B)	SF	40	-	-	40
24	00759.90(a)	CONCRETE CURBS, STRAIGHT CURB (WL-501)	LF	145	-	-	145
25	00730.90	EMULSIFIED ASPHALT FOR TACK COAT	TON	3	3.3	-	6
26	00745.90(a)	LEVEL 2, 3/4 INCH ACP	TON	695	14	180	889
27	00745.90(a)	LEVEL 2, 1/2 INCH ACP	TON	695	910	180	1786
28	00759.90	ADA CURB RAMP	EA	1	-	1	2
29	00749.92(a)	ASPHALT APPROACHES	EA	59	64	10	133
30	00641.90(b)	AGGREGATE BASE	CY	-	194	-	194
31	00490.90(g)	CONNECTION TO EXISTING STRUCTURES (CATCH BASIN)	EA	1	-	-	1
32	00759.90(c)	CONCRETE DRIVEWAYS	SF	-	345	-	345
33	SP-6	14' ASPHALT LOCAL SPEED BUMP (P-440)	EA	-	2	-	2
34	00490.90(g)	CONNECTION TO EXISTING STRUCTURES (STORM MAIN)	EA	-	2	-	2



CITY OF WEST LINN
 22500 SALAMO ROAD
 WEST LINN, OR 97068
 WESTLINNOREGON.GOV
 PHONE: (503) 722-5500
 FAX: (503) 656-4106



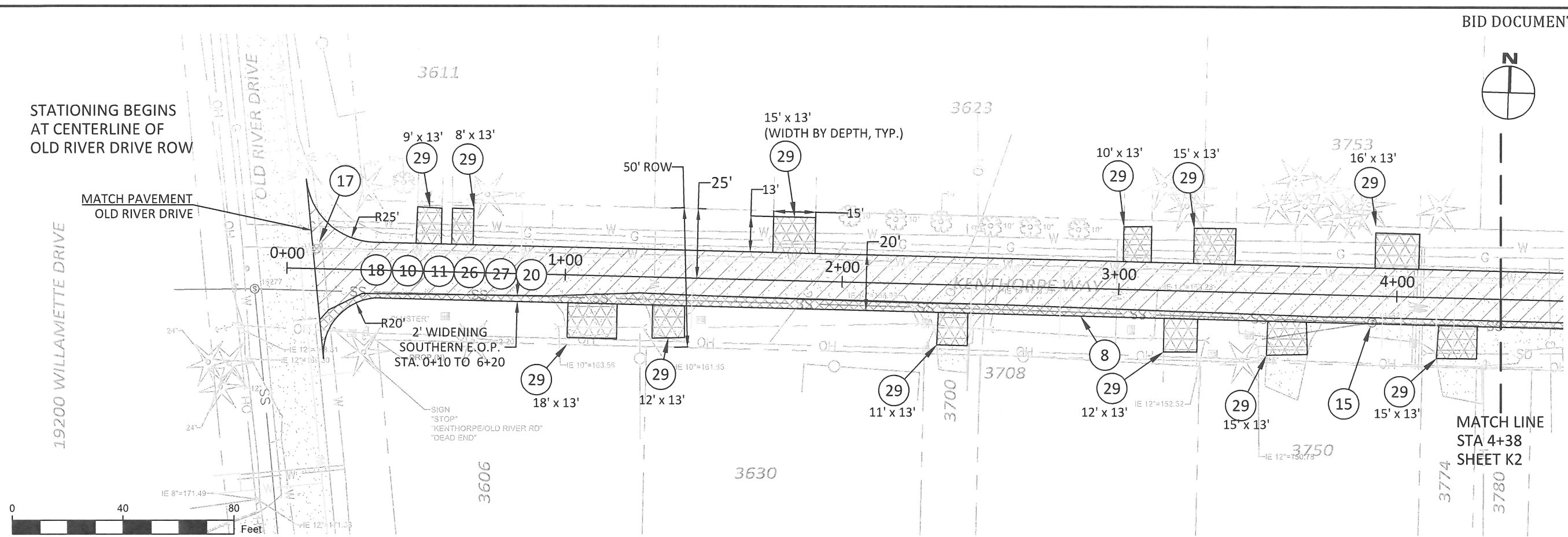
CONTRACTOR TBD

CITY OF WEST LINN
 2017 ROAD PROGRAM
 Kenthorpe Way
 Sta. 0+00 to 4+38

PROJECT DATA	
PROJECT NO:	PW-17-01
DESIGNED BY:	LCALVERT
DRAWN BY:	MPALMER
CHECKED BY:	ELAIS
DATE ISSUED:	5/24/17

REVISION	
DATE	DESCRIPTION

PLAN SHEET
K1
 4 OF 26



ITEM	ODOT SPECIFICATION #	DESCRIPTION	UNIT	ESTIMATE
8	00331.90	12 INCH SUBGRADE STABILIZATION (WIDENING)	SY	95
10	00344.90(a)	TREATED SUBGRADE, 12 INCHES THICK	SY	951
11	00344.90(c)	PORTLAND CEMENT	TON	28
15	00490.90(a)	MINOR ADJUSTMENT OF MANHOLES	EA	1
17	00490.90(d)	ADJUSTING BOXES	EA	1
26	00745.90(a)	LEVEL 2, 3/4 INCH ACP	TON	109
27	00745.90(a)	LEVEL 2, 1/2 INCH ACP	TON	109
29	00749.92(a)	ASPHALT APPROACHES	EA	12
18	SP-1	ASPHALT PULVERIZING, 12 INCHES	SY	856
22	00641.90(g)	AGGREGATE BASE, 10 INCHES THICK (DRIVEWAYS)	SY	225
6	00310.92(c)	REMOVAL OF WALKS AND DRIVEWAYS, 12 INCHES	SY	225
25	00730.90	EMULSIFIED ASPHALT FOR TACK COAT	TON	0.4

NOTE:
 1. DRIVEWAYS (29) INCLUDE (6) AND (22) AS DETERMINED BY CITY INSPECTOR DURING CONSTRUCTION.



CITY OF WEST LINN
 22500 SALAMO ROAD
 WEST LINN, OR 97068
 WESTLINN.OREGON.GOV
 PHONE: (503) 722-5500
 FAX: (503) 656-4106



EXPIRES: 12/31/2017

CONTRACTOR TBD

CITY OF WEST LINN
 2017 ROAD PROGRAM

Kenthorpe Way
 Sta. 4+38 to 9+41

PROJECT DATA

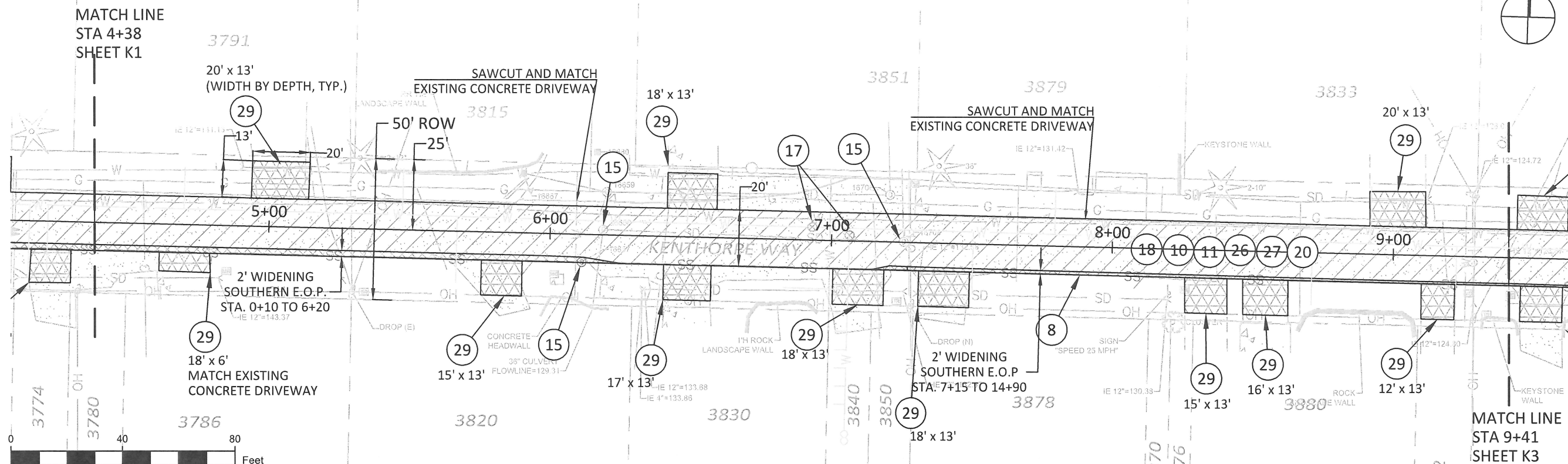
PROJECT NO: PW-17-01
 DESIGNED BY: LCALVERT
 DRAWN BY: MPALMER
 CHECKED BY: ELAIS
 DATE ISSUED: 5/24/17

REVISION

DATE	DESCRIPTION

PLAN SHEET

K2



ITEM	ODOT SPECIFICATION #	DESCRIPTION	UNIT	ESTIMATE
8	00331.90	12 INCH SUBGRADE STABILIZATION (WIDENING)	SY	91
10	00344.90(a)	TREATED SUBGRADE, 12 INCHES THICK	SY	1,097
11	00344.90(c)	PORTLAND CEMENT	TON	32
15	00490.90(a)	MINOR ADJUSTMENT OF MANHOLES	EA	3
17	00490.90(d)	ADJUSTING BOXES	EA	1
26	00745.90(a)	LEVEL 2, 3/4 INCH ACP	TON	126
27	00745.90(a)	LEVEL 2, 1/2 INCH ACP	TON	126
29	00749.92(a)	ASPHALT APPROACHES	EA	11
18	SP-1	ASPHALT PULVERIZING, 12 INCHES	SY	1006
22	00641.90(g)	AGGREGATE BASE, 10 INCHES THICK (DRIVEWAYS)	SY	256
6	00310.92(c)	REMOVAL OF WALKS AND DRIVEWAYS, 12 INCHES	SY	256
25	00730.90	EMULSIFIED ASPHALT FOR TACK COAT	TON	0.5

NOTE:

- DRIVEWAYS (29) AND (32) INCLUDE (6) AND (22) AS DETERMINED BY CITY INSPECTOR DURING CONSTRUCTION.



CITY OF WEST LINN
22500 SALAMO ROAD
WEST LINN, OR 97068
WESTLINN.OREGON.GOV
PHONE: (503) 722-5500
FAX: (503) 656-4106



EXPIRES: 12/31/2017

CONTRACTOR TBD

CITY OF WEST LINN
2017 ROAD PROGRAM
Kenthorpe Way
Sta. 9+41 to 14+53

PROJECT DATA

PROJECT NO: PW-17-01
DESIGNED BY: LCALVERT
DRAWN BY: MPALMER
CHECKED BY: ELAIS
DATE ISSUED: 5/24/17

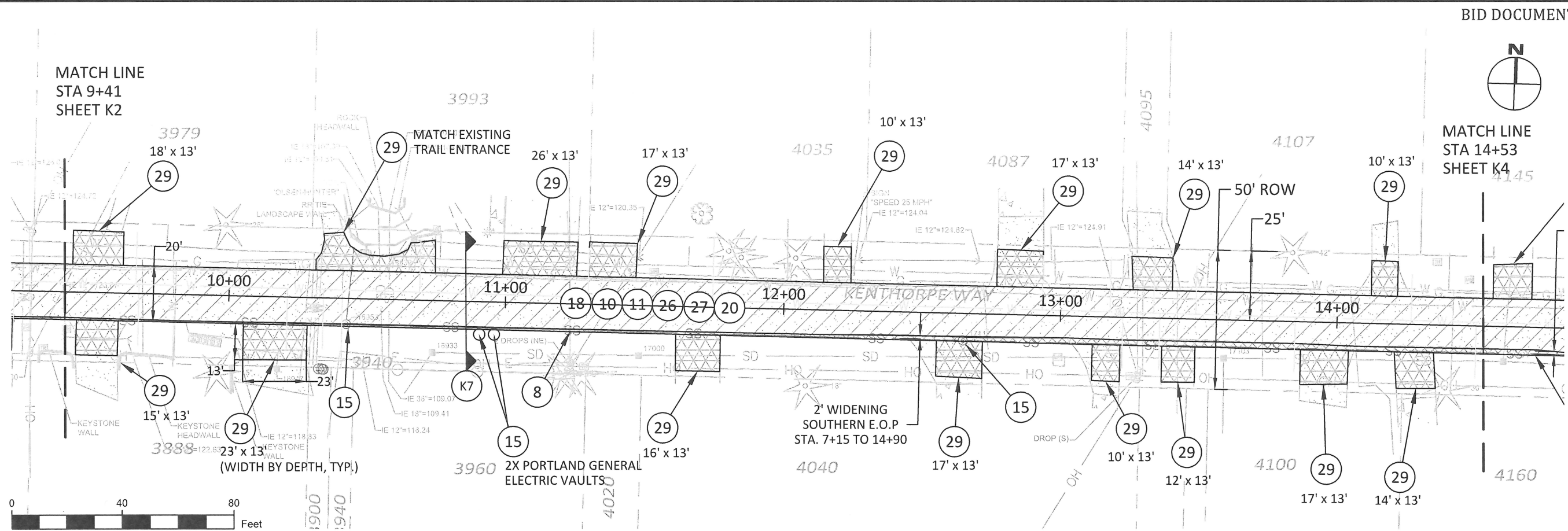
REVISION

DATE	DESCRIPTION

PLAN SHEET

K3

6 OF 26



ITEM	ODOT SPECIFICATION #	DESCRIPTION	UNIT	ESTIMATE
8	00331.90	12 INCH SUBGRADE STABILIZATION (WIDENING)	SY	114
10	00344.90(a)	TREATED SUBGRADE, 12 INCHES THICK	SY	1,138
11	00344.90(c)	PORTLAND CEMENT	TON	33
15	00490.90(a)	MINOR ADJUSTMENT OF MANHOLES	EA	4
26	00745.90(a)	LEVEL 2, 3/4 INCH ACP	TON	131
27	00745.90(a)	LEVEL 2, 1/2 INCH ACP	TON	131
29	00749.92(a)	ASPHALT APPROACHES	EA	16
18	SP-1	ASPHALT PULVERIZING, 12 INCHES	SY	1024
22	00641.90(g)	AGGREGATE BASE, 10 INCHES THICK (DRIVEWAYS)	SY	341
6	00310.92(c)	REMOVAL OF WALKS AND DRIVEWAYS, 12 INCHES	SY	341
25	00730.90	EMULSIFIED ASPHALT FOR TACK COAT	TON	0.5

NOTE:
1. DRIVEWAYS (29) INCLUDE (6) AND (22) AS DETERMINED BY CITY INSPECTOR DURING CONSTRUCTION.



CITY OF WEST LINN
 22500 SALAMO ROAD
 WEST LINN, OR 97068
 WESTLINN.OREGON.GOV
 PHONE: (503) 722-5500
 FAX: (503) 656-4106



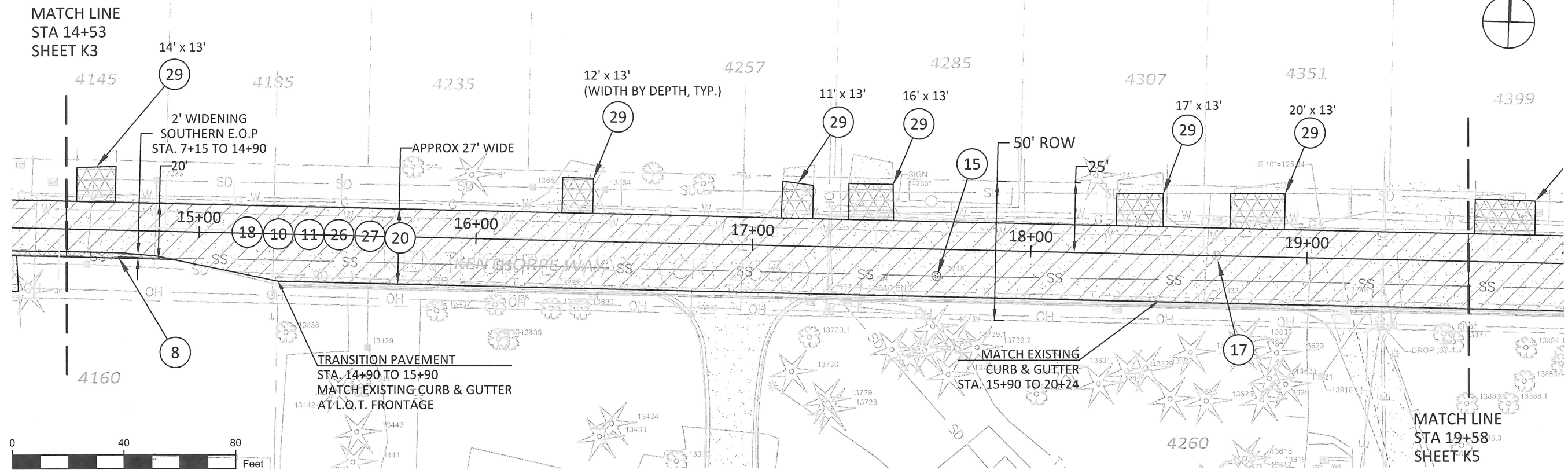
CONTRACTOR TBD

CITY OF WEST LINN
 2017 ROAD PROGRAM
 Kenthorpe Way
 Sta. 14+53 to 19+58

PROJECT DATA	
PROJECT NO:	PW-17-01
DESIGNED BY:	LCALVERT
DRAWN BY:	MPALMER
CHECKED BY:	ELAIS
DATE ISSUED:	5/24/17

REVISION	
DATE	DESCRIPTION

PLAN SHEET
K4
 7 OF 26



ITEM	ODOT SPECIFICATION #	DESCRIPTION	UNIT	ESTIMATE
8	00331.90	12 INCH SUBGRADE STABILIZATION (WIDENING)	SY	8
10	00344.90(a)	TREATED SUBGRADE, 12 INCHES THICK	SY	1,486
11	00344.90(c)	PORTLAND CEMENT	TON	43
15	00490.90(a)	MINOR ADJUSTMENT OF MANHOLES	EA	1
17	00490.90(d)	ADJUSTING BOXES	EA	1
26	00745.90(a)	LEVEL 2, 3/4 INCH ACP	TON	171
27	00745.90(a)	LEVEL 2, 1/2 INCH ACP	TON	171
29	00749.92(a)	ASPHALT APPROACHES	EA	6
18	SP-1	ASPHALT PULVERIZING, 12 INCHES	SY	1478
22	00641.90(g)	AGGREGATE BASE, 10 INCHES THICK (DRIVEWAYS)	SY	130
6	00310.92(c)	REMOVAL OF WALKS AND DRIVEWAYS, 12 INCHES	SY	130
25	00730.90	EMULSIFIED ASPHALT FOR TACK COAT	TON	0.6

NOTE:
 1. DRIVEWAYS (29) INCLUDE (6) AND (22) AS DETERMINED BY CITY INSPECTOR DURING CONSTRUCTION.



CITY OF WEST LINN
 22500 SALAMO ROAD
 WEST LINN, OR 97068
 WESTLINNOREGON.GOV
 PHONE: (503) 722-5500
 FAX: (503) 656-4106

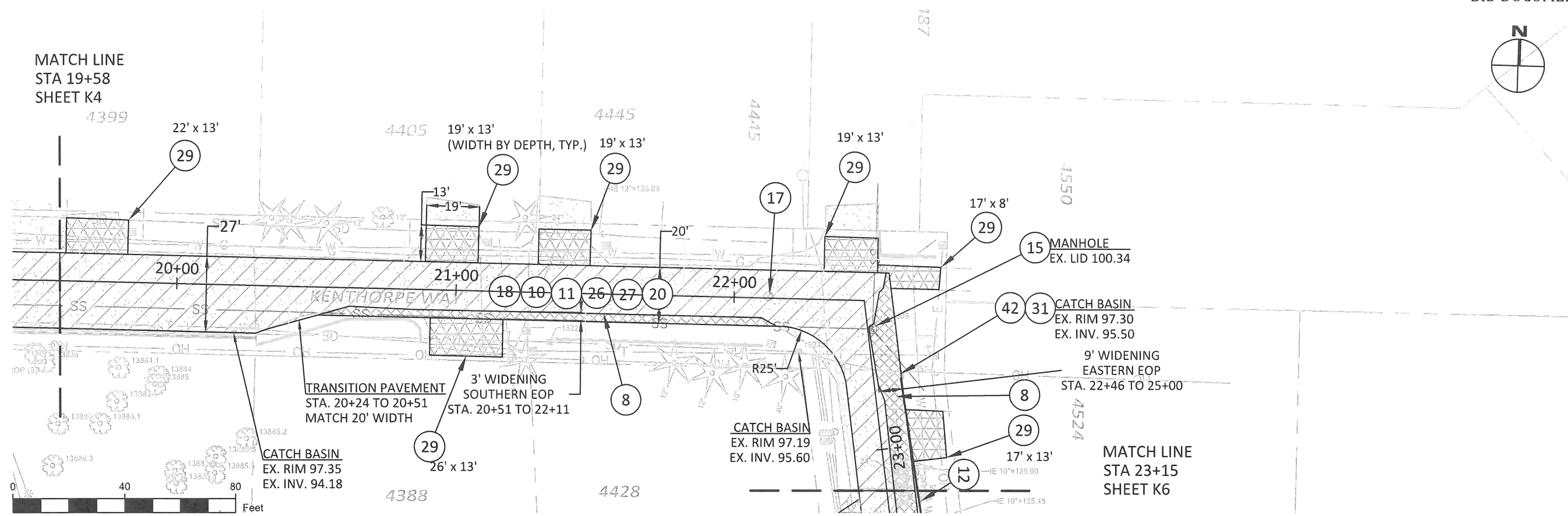


EXPIRES: 12/31/2017

CONTRACTOR TBD

CITY OF WEST LINN
 2017 ROAD PROGRAM

Kenthorpe Way
 Sta. 19+58 to 23+15



ITEM	ODOT SPECIFICATION #	DESCRIPTION	UNIT	ESTIMATE
8	00331.90	12 INCH SUBGRADE STABILIZATION (WIDENING)	SY	122
10	00344.90(a)	TREATED SUBGRADE, 12 INCHES THICK	SY	844
11	00344.90(c)	PORTLAND CEMENT	TON	25
15	00490.90(a)	MINOR ADJUSTMENT OF MANHOLES	EA	1
17	00490.90(d)	ADJUSTING BOXES	EA	1
26	00745.90(a)	LEVEL 2, 3/4 INCH ACP	TON	97
27	00745.90(a)	LEVEL 2, 1/2 INCH ACP	TON	97
29	00749.92(a)	ASPHALT APPROACHES	EA	7
18	SP-1	ASPHALT PULVERIZING, 12 INCHES	SY	721
9	00490.90(e)	ADJUSTING CATCH BASINS	EA	1
22	00641.90(g)	AGGREGATE BASE, 10 INCHES THICK (DRIVEWAYS)	SY	167
6	00310.92(c)	REMOVAL OF WALKS AND DRIVEWAYS, 12 INCHES	SY	167
25	00730.90	EMULSIFIED ASPHALT FOR TACK COAT	TON	0.4

NOTE:

1. DRIVEWAYS (29) INCLUDE (6) AND (22) AS DETERMINED BY CITY INSPECTOR DURING CONSTRUCTION.
2. ELEVATIONS LOCAL TO KENTHORPE WAY BENCHMARK.

PROJECT DATA	
PROJECT NO:	PW-17-01
DESIGNED BY:	LCALVERT
DRAWN BY:	MPALMER
CHECKED BY:	ELAIS
DATE ISSUED:	5/24/17

REVISION	
DATE	DESCRIPTION

PLAN SHEET
K5
 8 OF 26



CITY OF WEST LINN
22500 SALAMO ROAD
WEST LINN, OR 97068
WESTLINNOREGON.GOV
PHONE: (503) 722-5500
FAX: (503) 656-4106



EXPIRES: 12/31/2017

CONTRACTOR TBD

CITY OF WEST LINN
2017 ROAD PROGRAM
Kenthorpe Way
Sta. 23+15 to 25+30

PROJECT DATA

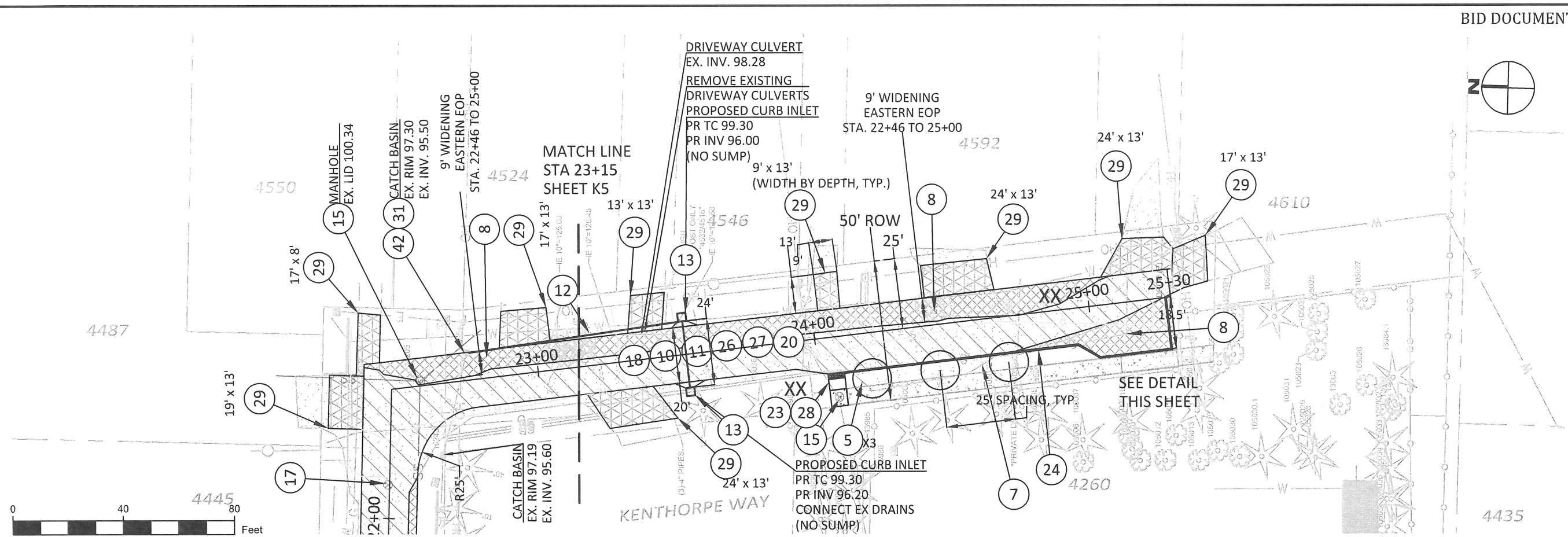
PROJECT NO: PW-17-01
DESIGNED BY: LCALVERT
DRAWN BY: MPALMER
CHECKED BY: ELAIS
DATE ISSUED: 5/24/17

REVISION

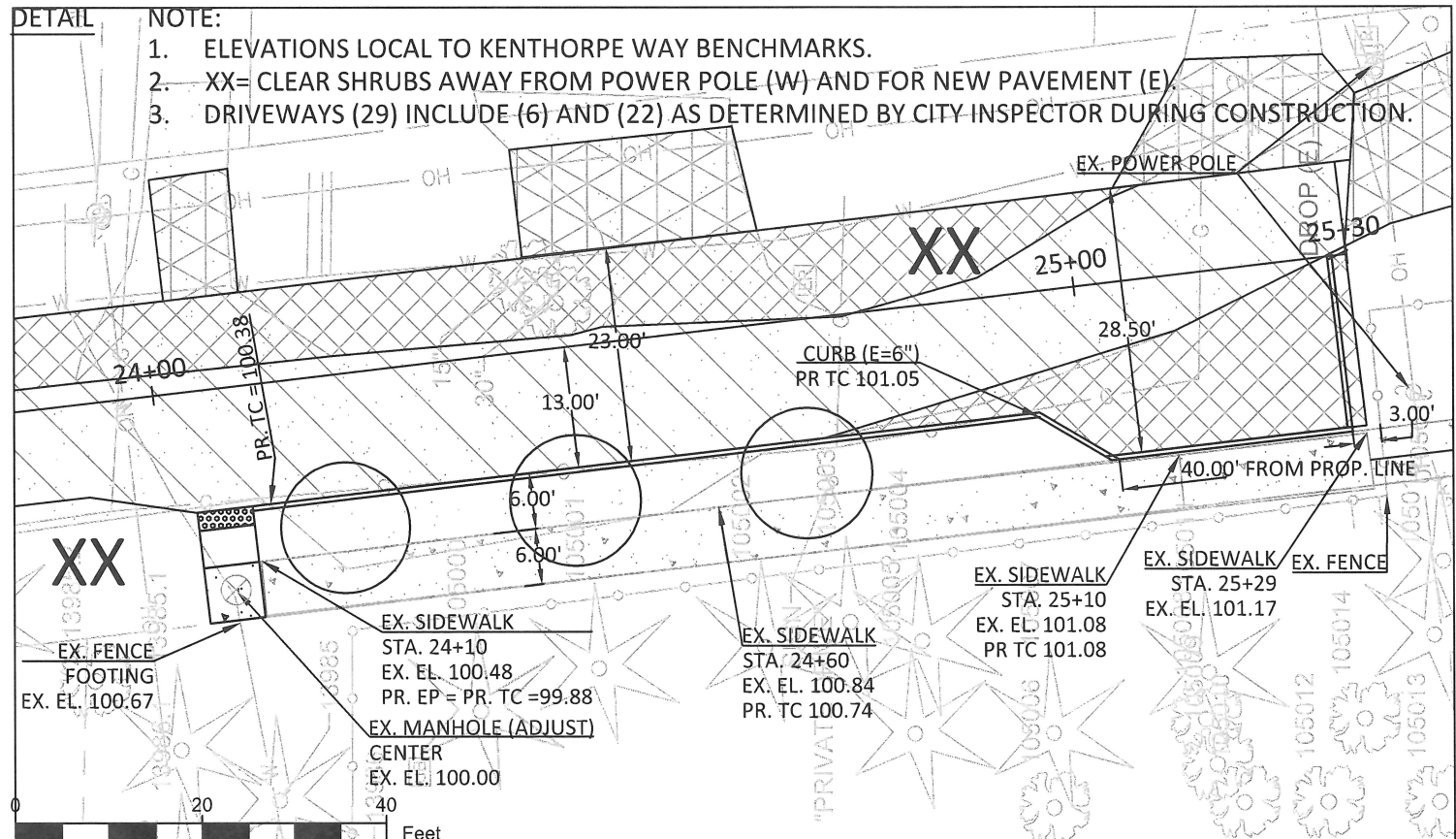
DATE	DESCRIPTION

PLAN SHEET

K6
9 OF 26



ITEM	ODOT SPECIFICATION #	DESCRIPTION	UNIT	ESTIMATE
8	00331.90	12 INCH SUBGRADE STABILIZATION (WIDENING)	SY	242
10	00344.90(a)	TREATED SUBGRADE, 12 INCHES THICK	SY	525
11	00344.90(c)	PORTLAND CEMENT	TON	15
26	00745.90(a)	LEVEL 2, 3/4 INCH ACP	TON	60
27	00745.90(a)	LEVEL 2, 1/2 INCH ACP	TON	60
29	00749.92(a)	ASPHALT APPROACHES	EA	7
18	SP-1	ASPHALT PULVERIZING, 12 INCHES	SY	284
24	00759.90(a)	CONCRETE CURBS, CURB & GUTTER (WL-501)	LF	145
7	00330.93(d)	GENERAL EXCAVATION	CY	57
5	SP-5	STREET TREES	EA	3
22	00641.90(g)	AGGREGATE BASE, 10 INCHES THICK (DRIVEWAYS)	SY	160
6	00310.92(c)	REMOVAL OF WALKS AND DRIVEWAYS, 12 INCHES	SY	160
15	00490.90(a)	MINOR ADJUSTMENT OF MANHOLES	EA	1
28	00759.90	ADA CURB RAMP	EA	1
23	00759.90(e)	CONCRETE WALKS (WL-508B)	SF	40
13	00470.90(d)	CONCRETE INLETS, TYPE GUTTER INLET 2 1/2 A (WL-600)	EA	2
12	00445.91(b)	12 INCH REINFORCED CONCRETE PIPE	LF	102
25	00730.90	EMULSIFIED ASPHALT FOR TACK COAT	TON	0.2
31	00490.90(g)	CONNECTION TO EXISTING STRUCTURES (CATCH BASIN)	EA	1





CITY OF WEST LINN
 22500 SALAMO ROAD
 WEST LINN, OR 97068
 WESTLINN.OREGON.GOV
 PHONE: (503) 722-5500
 FAX: (503) 656-4106



EXPIRES: 12/31/2017

CONTRACTOR TBD

CITY OF WEST LINN
 2017 ROAD PROGRAM

Kenthorpe Way
 Cross-Sections

PROJECT DATA

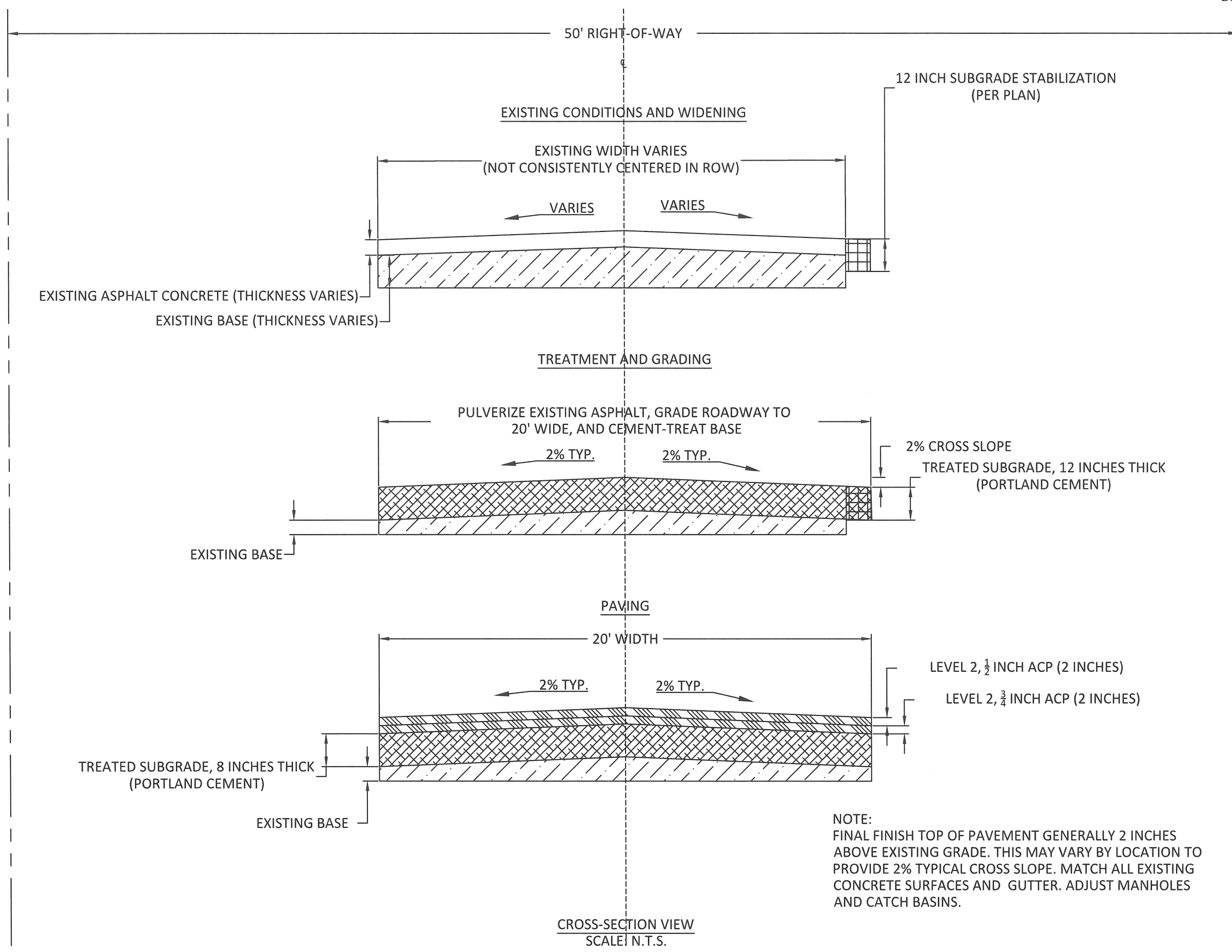
PROJECT NO:	PW-17-01
DESIGNED BY:	LCALVERT
DRAWN BY:	MPALMER
CHECKED BY:	ELAIS
DATE ISSUED:	5/24/17

REVISION

DATE	DESCRIPTION

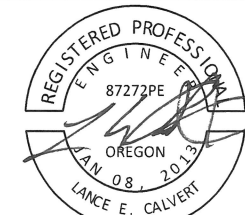
SECTION SHEET

K7





CITY OF WEST LINN
22500 SALAMO ROAD
WEST LINN, OR 97068
WESTLINN.OREGON.GOV
PHONE: (503) 722-5500
FAX: (503) 656-4106



EXPIRES: 12/31/2017

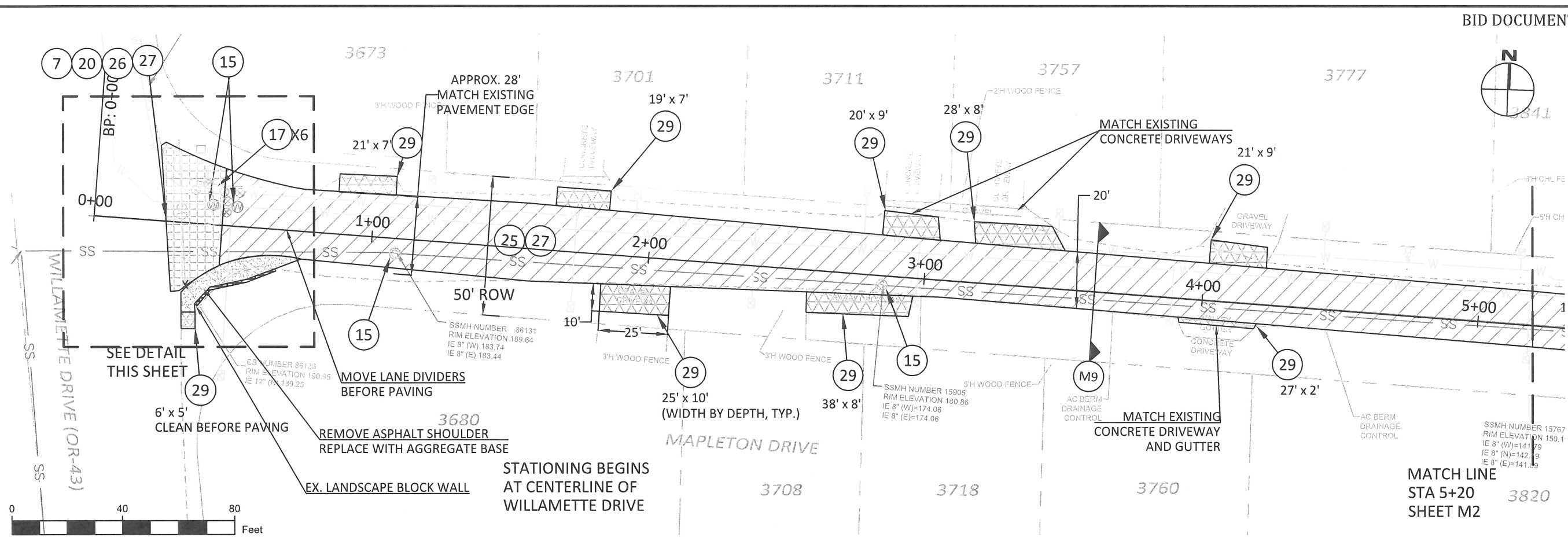
CONTRACTOR TBD

CITY OF WEST LINN
2017 ROAD PROGRAM
Mapleton Drive
Sta. 0+29 to 5+20

PROJECT DATA	
PROJECT NO:	PW-17-01
DESIGNED BY:	LCALVERT
DRAWN BY:	MPALMER
CHECKED BY:	ELAIS
DATE ISSUED:	5/24/17

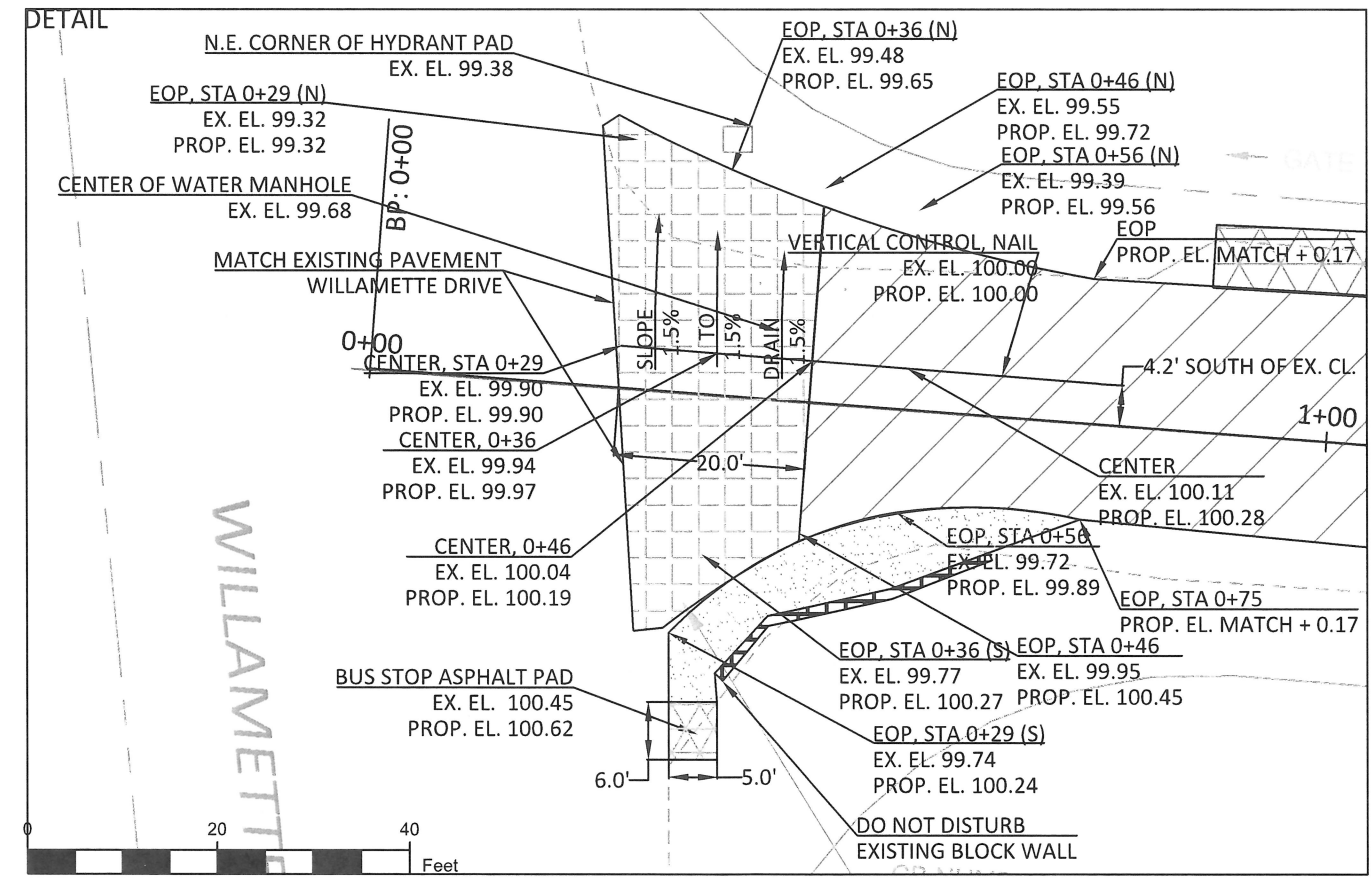
REVISION	
DATE	DESCRIPTION

PLAN SHEET
M1
11 OF 26



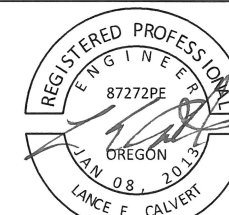
ITEM	ODOT SPECIFICATION #	DESCRIPTION	UNIT	ESTIMATE
15	00490.90(a)	MINOR ADJUSTMENT OF MANHOLES	EA	4
17	00490.90(d)	ADJUSTING BOXES	EA	6
25	00730.90	EMULSIFIED ASPHALT FOR TACK COAT	TON	0.5
27	00745.90(a)	LEVEL 2, 1/2 INCH ACP	TON	139
29	00749.92(a)	ASPHALT APPROACHES	EA	9
7	00330.93(d)	GENERAL EXCAVATION	CY	17
22	00641.90(g)	AGGREGATE BASE, 10 INCHES THICK (DRIVEWAYS)	SY	191
6	00310.92(c)	REMOVAL OF WALKS AND DRIVEWAYS, 12 INCHES	SY	191
26	00745.90(a)	LEVEL 2, 3/4 INCH ACP	TON	12

- NOTE:
- 1.5% CROSS SLOPE SOUTH TO NORTH. NO CROWN NEAR HIGHWAY 43.
 - DRIVEWAYS (29) INCLUDE (6) AND (22) AS DETERMINED BY CITY INSPECTOR DURING CONSTRUCTION.
 - ELEVATIONS SHOWN ARE LOCAL TO THIS SHEET ONLY.





CITY OF WEST LINN
 22500 SALAMO ROAD
 WEST LINN, OR 97068
 WESTLINNOREGON.GOV
 PHONE: (503) 722-5500
 FAX: (503) 656-4106



EXPIRES: 12/31/2017

CONTRACTOR TBD

CITY OF WEST LINN
 2017 ROAD PROGRAM

Mapleton Drive
 Sta. 5+20 to 10+20

PROJECT DATA

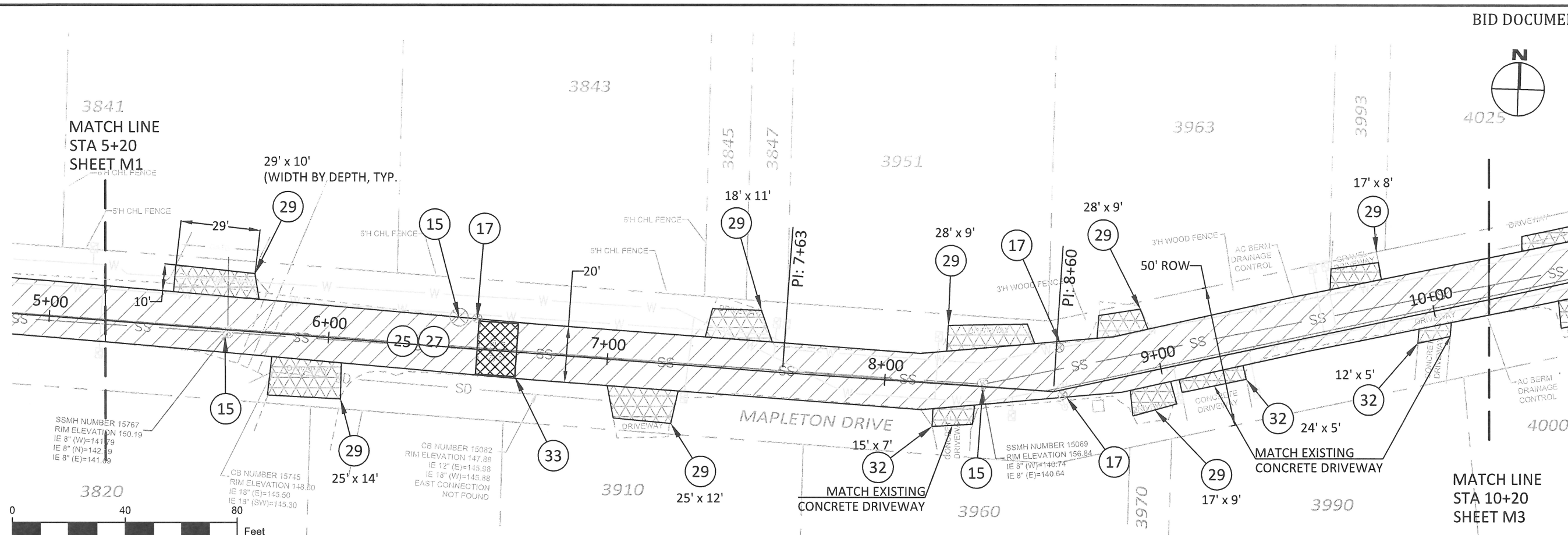
PROJECT NO: PW-17-01
 DESIGNED BY: LCALVERT
 DRAWN BY: MPALMER
 CHECKED BY: ELAIS
 DATE ISSUED: 5/24/17

REVISION

DATE	DESCRIPTION

PLAN SHEET

M2



NOTE:

1. DRIVEWAYS (29) AND (32) INCLUDE (6) AND (22) AS DETERMINED BY CITY INSPECTOR DURING CONSTRUCTION.
2. LOCATION OF SPEED BUMP TO BE DETERMINED BY CITY INSPECTOR DURING CONSTRUCTION.

ITEM	ODOT SPECIFICATION #	DESCRIPTION	UNIT	ESTIMATE
15	00490.90(a)	MINOR ADJUSTMENT OF MANHOLES	EA	3
17	00490.90(d)	ADJUSTING BOXES	EA	3
25	00730.90	EMULSIFIED ASPHALT FOR TACK COAT	TON	0.5
27	00745.90(a)	LEVEL 2, 1/2 INCH ACP	TON	128
29	00749.92(a)	ASPHALT APPROACHES	EA	11
22	00641.90(g)	AGGREGATE BASE, 10 INCHES THICK (DRIVEWAYS)	SY	237
6	00310.92(c)	REMOVAL OF WALKS AND DRIVEWAYS, 12 INCHES	SY	237
32	00759.90(c)	CONCRETE DRIVEWAYS	SF	285
33	SP-6	14' ASPHALT LOCAL SPEED BUMP (P-440)	EA	1



CITY OF WEST LINN
 22500 SALAMO ROAD
 WEST LINN, OR 97068
 WESTLINN.OREGON.GOV
 PHONE: (503) 722-5500
 FAX: (503) 656-4106



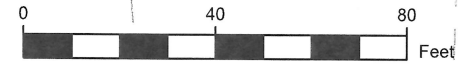
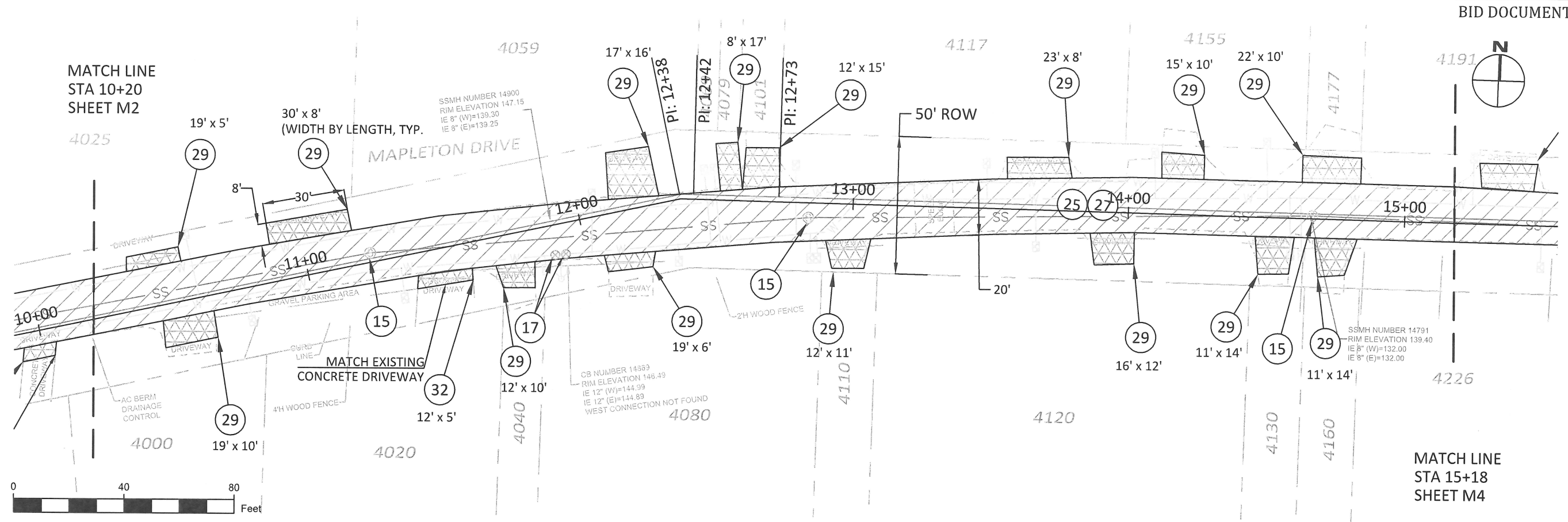
CONTRACTOR TBD

CITY OF WEST LINN
 2017 ROAD PROGRAM
 Mapleton Drive
 Sta. 10+20 to 15+18

PROJECT DATA	
PROJECT NO:	PW-17-01
DESIGNED BY:	LCALVERT
DRAWN BY:	MPALMER
CHECKED BY:	ELAIS
DATE ISSUED:	5/24/17

REVISION	
DATE	DESCRIPTION

PLAN SHEET
M3
 13 OF 26



ITEM	ODOT SPECIFICATION #	DESCRIPTION	UNIT	ESTIMATE
15	00490.90(a)	MINOR ADJUSTMENT OF MANHOLES	EA	3
17	00490.90(d)	ADJUSTING BOXES	EA	2
25	00730.90	EMULSIFIED ASPHALT FOR TACK COAT	TON	0.5
27	00745.90(a)	LEVEL 2, 1/2 INCH ACP	TON	127
29	00749.92(a)	ASPHALT APPROACHES	EA	16
22	00641.90(g)	AGGREGATE BASE, 10 INCHES THICK (DRIVEWAYS)	SY	288
6	00310.92(c)	REMOVAL OF WALKS AND DRIVEWAYS, 12 INCHES	SY	288
32	00759.90(c)	CONCRETE DRIVEWAYS	SF	60

NOTE:
 1. DRIVEWAYS (29) AND (32) INCLUDE (6) AND (22) AS DETERMINED BY CITY INSPECTOR DURING CONSTRUCTION.

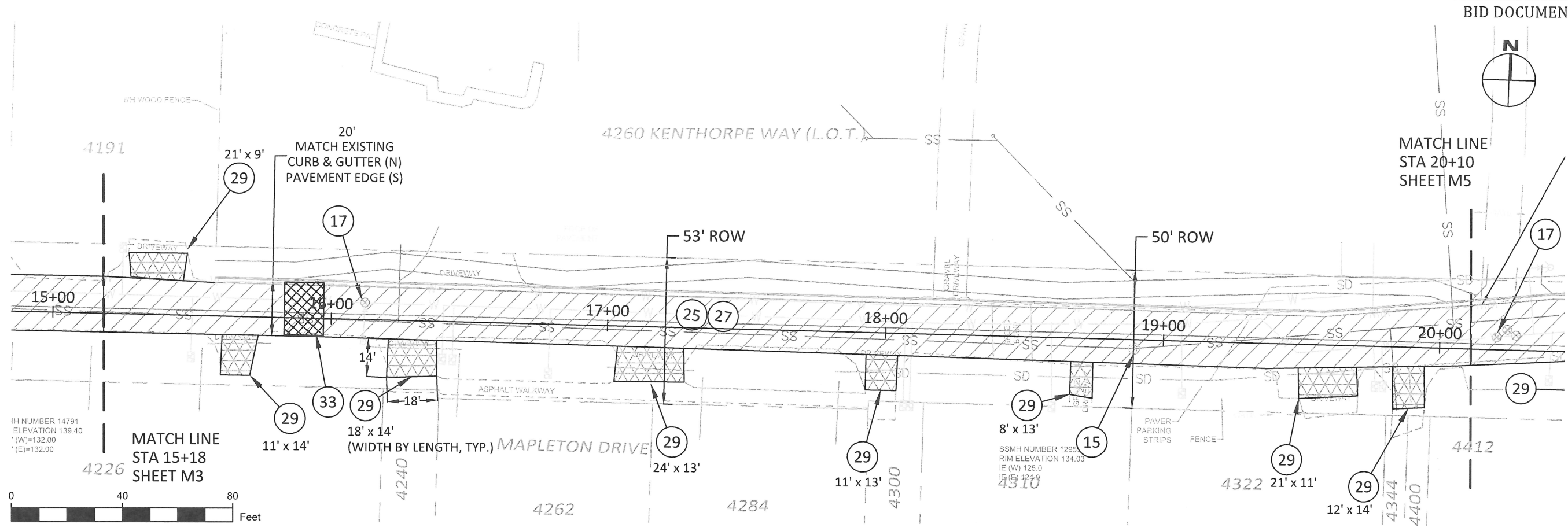


CITY OF WEST LINN
 22500 SALAMO ROAD
 WEST LINN, OR 97068
 WESTLINNOREGON.GOV
 PHONE: (503) 722-5500
 FAX: (503) 656-4106



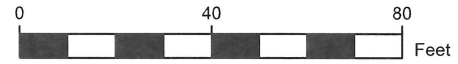
CONTRACTOR TBD

CITY OF WEST LINN
 2017 ROAD PROGRAM
 Mapleton Drive
 Sta. 15+18 to 20+11



1H NUMBER 14791
 ELEVATION 139.40
 ' (W)=132.00
 ' (E)=132.00

MATCH LINE
 STA 15+18
 SHEET M3



ITEM	ODOT SPECIFICATION #	DESCRIPTION	UNIT	ESTIMATE
15	00490.90(a)	MINOR ADJUSTMENT OF MANHOLES	EA	1
17	00490.90(d)	ADJUSTING BOXES	EA	1
25	00730.90	EMULSIFIED ASPHALT FOR TACK COAT	TON	0.5
27	00745.90(a)	LEVEL 2, 1/2 INCH ACP	TON	126
29	00749.92(a)	ASPHALT APPROACHES	EA	8
22	00641.90(g)	AGGREGATE BASE, 10 INCHES THICK (DRIVEWAYS)	SY	173
6	00310.92(c)	REMOVAL OF WALKS AND DRIVEWAYS, 12 INCHES	SY	173
33	SP-6	14' ASPHALT LOCAL SPEED BUMP (P-440)	EA	1

- NOTE:
1. DRIVEWAYS (29) INCLUDE (6) AND (22) AS DETERMINED BY CITY INSPECTOR DURING CONSTRUCTION.
 2. MATCH EXISTING CURB AND GUTTER ALONG L.O.T. FRONTAGE.
 3. LOCATION OF SPEED BUMP TO BE DETERMINED BY CITY INSPECTOR DURING CONSTRUCTION.

PROJECT DATA

PROJECT NO:	PW-17-01
DESIGNED BY:	LCALVERT
DRAWN BY:	MPALMER
CHECKED BY:	ELAIS
DATE ISSUED:	5/24/17

REVISION

DATE	DESCRIPTION

PLAN SHEET
M4
 14 OF 26



CITY OF WEST LINN
 22500 SALAMO ROAD
 WEST LINN, OR 97068
 WESTLINN.OREGON.GOV
 PHONE: (503) 722-5500
 FAX: (503) 656-4106



EXPIRES: 12/31/2017

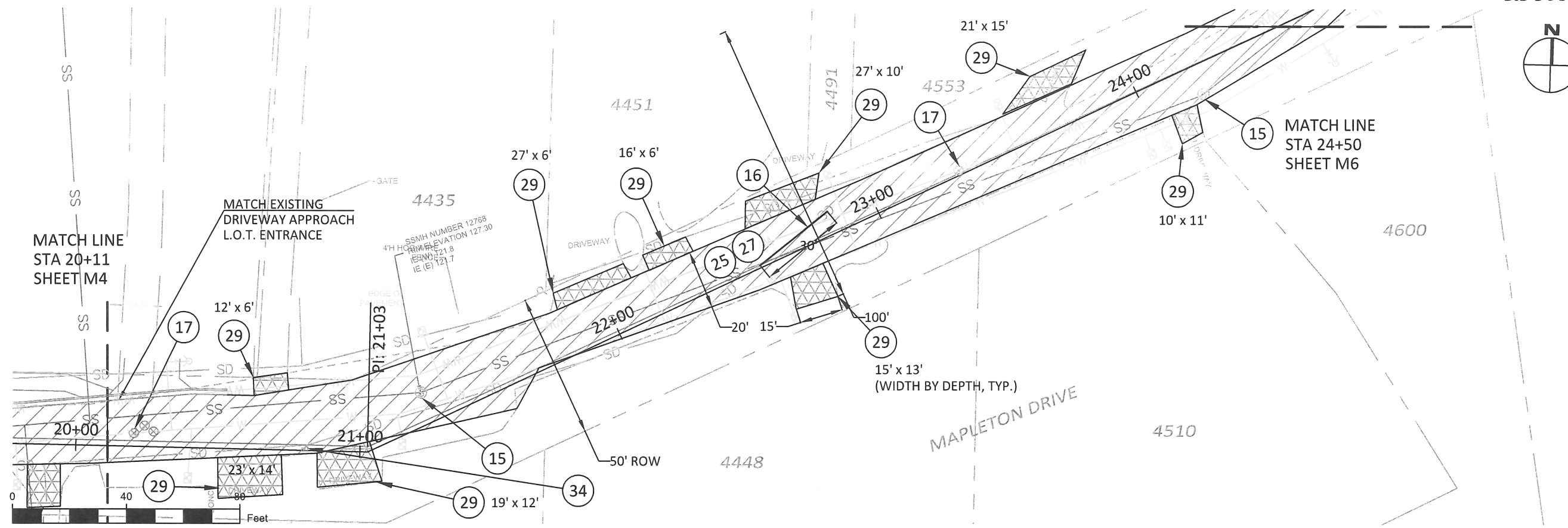
CONTRACTOR TBD

CITY OF WEST LINN
 2017 ROAD PROGRAM
 Mapleton Drive
 Sta. 20+11 to 24+54

PROJECT DATA	
PROJECT NO:	PW-17-01
DESIGNED BY:	LCALVERT
DRAWN BY:	MPALMER
CHECKED BY:	ELAIS
DATE ISSUED:	5/24/17

REVISION	
DATE	DESCRIPTION

PLAN SHEET
M5
 15 OF 26

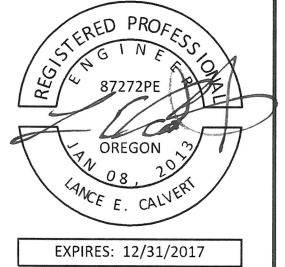


ITEM	ODOT SPECIFICATION #	DESCRIPTION	UNIT	ESTIMATE
15	00490.90(a)	MINOR ADJUSTMENT OF MANHOLES	EA	2
25	00730.90	EMULSIFIED ASPHALT FOR TACK COAT	TON	0.5
27	00745.90(a)	LEVEL 2, 1/2 INCH ACP	TON	125
29	00749.92(a)	ASPHALT APPROACHES	EA	9
17	00490.90(d)	ADJUSTING BOXES	EA	4
22	00641.90(g)	AGGREGATE BASE, 10 INCHES THICK (DRIVEWAYS)	SY	197
6	00310.92(c)	REMOVAL OF WALKS AND DRIVEWAYS, 12 INCHES	SY	197
16	00445.91(b)	15 INCH REINFORCED CONCRETE PIPE CONNECTION TO EXISTING STRUCTURES (STORM MAIN)	LF	30
34	00490.90(g)	REMOVAL OF TWO 12-INCH BY 12-INCH PLASTIC CATCH BASINS. CONNECT TWO 4-INCH ROOF DRAIN LINES TO EXISTING 12-INCH C900 STORM MAIN USING INSERTA TEE. CONTRACTOR TO VERIFY MATERIALS.	EA	2

- NOTE:
- DRIVEWAYS (29) INCLUDE (6) AND (22) AS DETERMINED BY CITY INSPECTOR DURING CONSTRUCTION.
 - (34) = REMOVE TWO 12-INCH BY 12-INCH PLASTIC CATCH BASINS. CONNECT TWO 4-INCH ROOF DRAIN LINES TO EXISTING 12-INCH C900 STORM MAIN USING INSERTA TEE. CONTRACTOR TO VERIFY MATERIALS.
 - (16) = REMOVE EXISTING 12-INCH STORM MAIN AND REPLACE WITH 15-INCH REINFORCED CONCRETE PIPE. PAVEMENT PATCHING IS INCIDENTAL TO COST OF PIPE.



CITY OF WEST LINN
 22500 SALAMO ROAD
 WEST LINN, OR 97068
 WESTLINNOREGON.GOV
 PHONE: (503) 722-5500
 FAX: (503) 656-4106



CONTRACTOR TBD

CITY OF WEST LINN
 2017 ROAD PROGRAM

Mapleton Drive
 Sta. 24+54 to 29+41

PROJECT DATA

PROJECT NO: PW-17-01
 DESIGNED BY: LCALVERT
 DRAWN BY: MPALMER
 CHECKED BY: ELAIS
 DATE ISSUED: 5/24/17

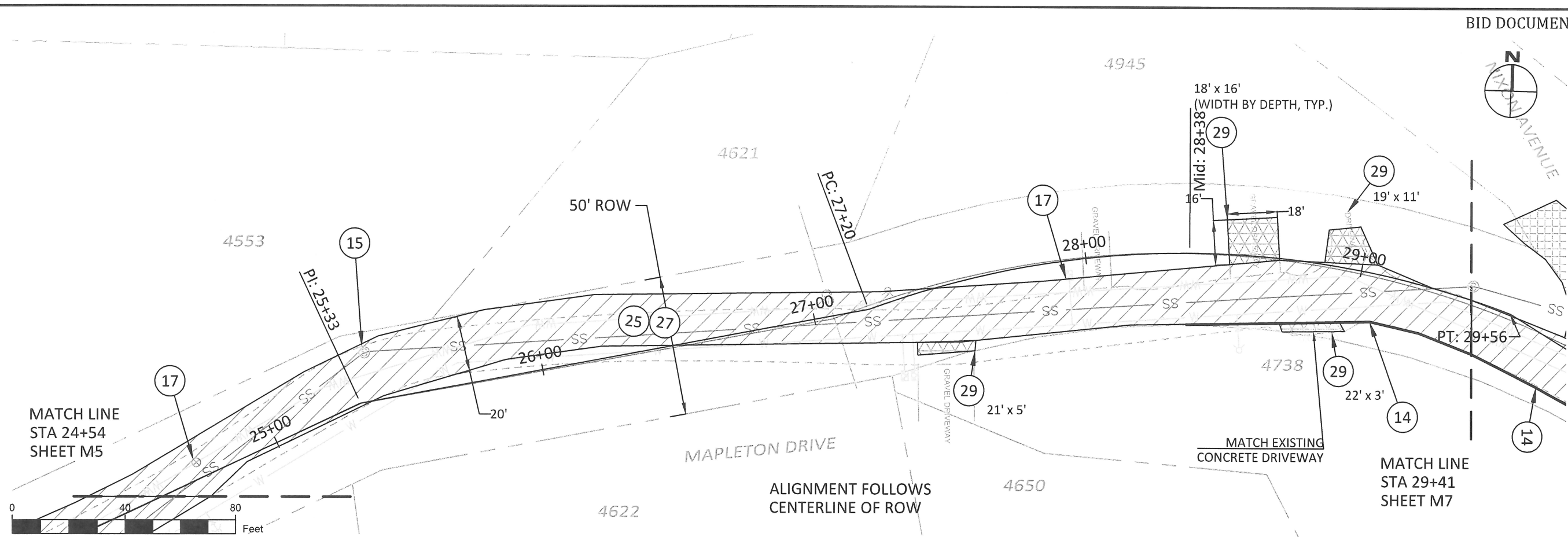
REVISION

DATE	DESCRIPTION

PLAN SHEET

M6

16 OF 26



NOTE:

1. DRIVEWAYS (29) INCLUDE (6) AND (22) AS DETERMINED BY CITY INSPECTOR DURING CONSTRUCTION.

ITEM	ODOT SPECIFICATION #	DESCRIPTION	UNIT	ESTIMATE
15	00490.90(a)	MINOR ADJUSTMENT OF MANHOLES	EA	1
17	00490.90(d)	ADJUSTING BOXES	EA	2
25	00730.90	EMULSIFIED ASPHALT FOR TACK COAT	TON	0.4
27	00745.90(a)	LEVEL 2, 1/2 INCH ACP	TON	123
29	00749.92(a)	ASPHALT APPROACHES	EA	4
14	00480.90	DRAINAGE CURB (AC) AGGREGATE BASE, 10 INCHES THICK (DRIVEWAYS)	LF	105
22	00641.90(g)	REMOVAL OF WALKS AND DRIVEWAYS, 12 INCHES	SY	74
6	00310.92(c)	REMOVAL OF WALKS AND DRIVEWAYS, 12 INCHES	SY	74



CITY OF WEST LINN
 22500 SALAMO ROAD
 WEST LINN, OR 97068
 WESTLINNOREGON.GOV
 PHONE: (503) 722-5500
 FAX: (503) 656-4106



EXPIRES: 12/31/2017

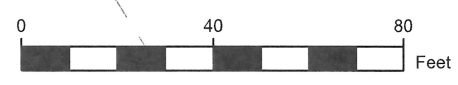
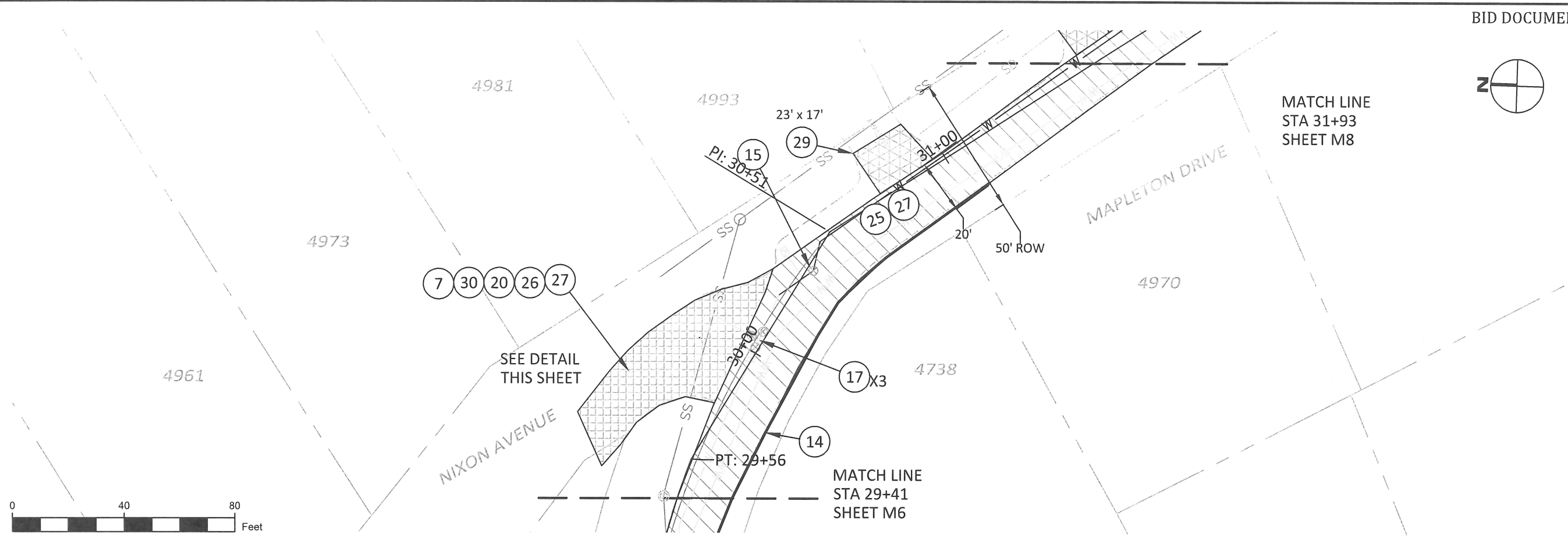
CONTRACTOR TBD

CITY OF WEST LINN
 2017 ROAD PROGRAM
 Mapleton Drive
 Sta. 29+41 to 31+93

PROJECT DATA	
PROJECT NO:	PW-17-01
DESIGNED BY:	LCALVERT
DRAWN BY:	MPALMER
CHECKED BY:	ELAIS
DATE ISSUED:	5/24/17

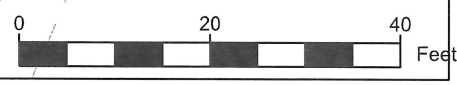
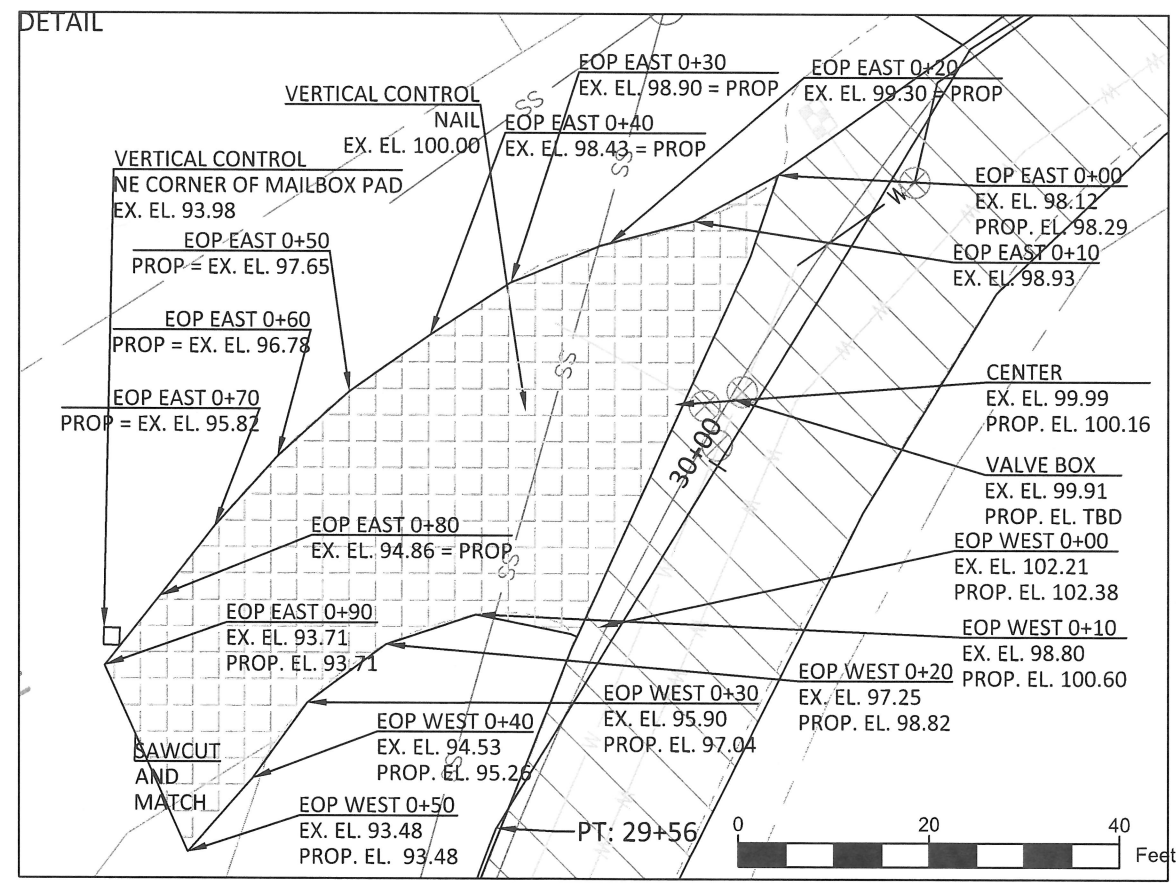
REVISION	
DATE	DESCRIPTION

PLAN SHEET
M7
 17 OF 26



ITEM	ODOT SPECIFICATION #	DESCRIPTION	UNIT	ESTIMATE
15	00490.90(a)	MINOR ADJUSTMENT OF MANHOLES	EA	1
17	00490.90(d)	ADJUSTING BOXES	EA	3
25	00730.90	EMULSIFIED ASPHALT FOR TACK COAT	TON	0.2
27	00745.90(a)	LEVEL 2, 1/2 INCH ACP	TON	58
29	00749.92(a)	ASPHALT APPROACHES	EA	1
7	00330.93(d)	GENERAL EXCAVATION	CY	23
14	00480.90	DRAINAGE CURB (AC)	LF	150
26	00745.90(a)	LEVEL 2, 3/4 INCH ACP	TON	3
22	00641.90(g)	AGGREGATE BASE, 10 INCHES THICK (DRIVEWAYS)	SY	43
6	00310.92(c)	REMOVAL OF WALKS AND DRIVEWAYS, 12 INCHES	SY	43
30	00641.90(b)	AGGREGATE BASE	CY	194

- NOTE:
1. DRIVEWAYS (29) INCLUDE (6) AND (22) AS DETERMINED BY CITY INSPECTOR DURING CONSTRUCTION.
 2. ELEVATIONS SHOWN LOCAL TO THIS SHEET ONLY.





CITY OF WEST LINN
 22500 SALAMO ROAD
 WEST LINN, OR 97068
 WESTLINNOREGON.GOV
 PHONE: (503) 722-5500
 FAX: (503) 656-4106



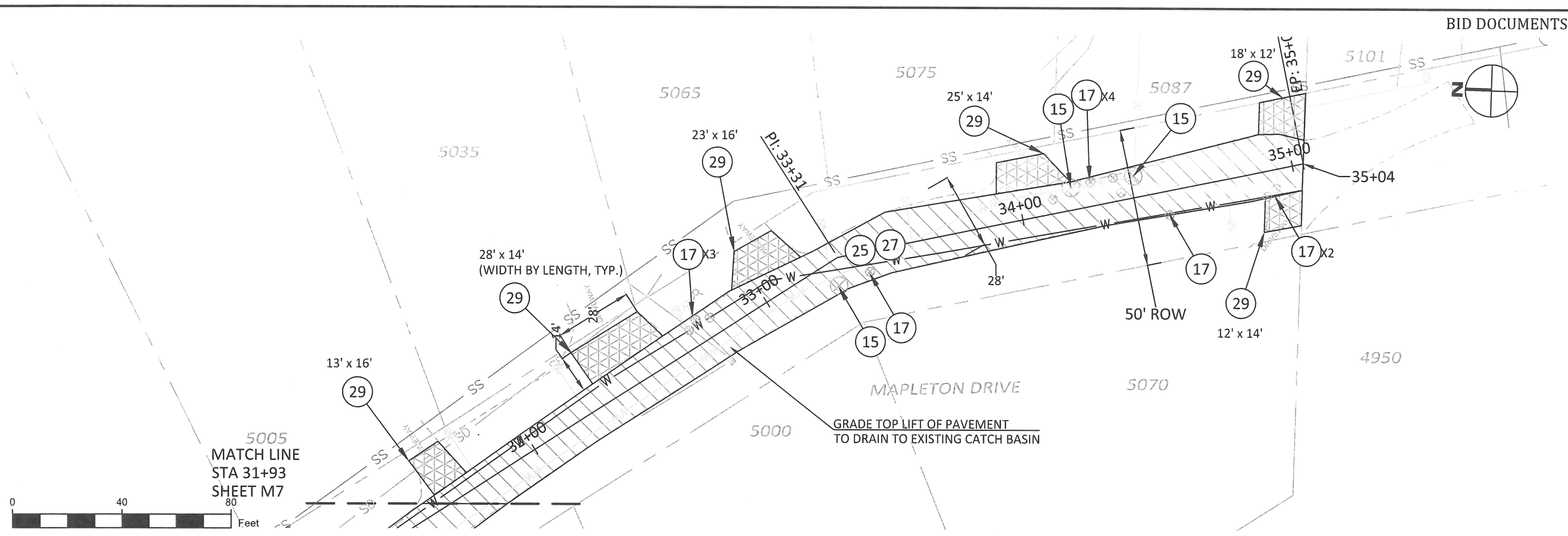
CONTRACTOR TBD

CITY OF WEST LINN
 2017 ROAD PROGRAM
 Mapleton Drive
 Sta. 31+93 to 35+34

PROJECT DATA	
PROJECT NO:	PW-17-01
DESIGNED BY:	LCALVERT
DRAWN BY:	MPALMER
CHECKED BY:	ELAIS
DATE ISSUED:	5/24/17

REVISION	
DATE	DESCRIPTION

PLAN SHEET
M8
 18 OF 26



NOTE:
 1. DRIVEWAYS (29) INCLUDE (6) AND (22) AS DETERMINED BY CITY INSPECTOR DURING CONSTRUCTION.

ITEM	ODOT SPECIFICATION #	DESCRIPTION	UNIT	ESTIMATE
17	00490.90(d)	ADJUSTING BOXES	EA	11
25	00730.90	EMULSIFIED ASPHALT FOR TACK COAT	TON	0.3
27	00745.90(a)	LEVEL 2, 1/2 INCH ACP	TON	84
29	00749.92(a)	ASPHALT APPROACHES	EA	6
15	00490.90(a)	MINOR ADJUSTMENT OF MANHOLES	EA	3
22	00641.90(g)	AGGREGATE BASE, 10 INCHES THICK (DRIVEWAYS)	SY	189
6	00310.92(c)	REMOVAL OF WALKS AND DRIVEWAYS, 12 INCHES	SY	189



CITY OF WEST LINN
 22500 SALAMO ROAD
 WEST LINN, OR 97068
 WESTLINNOREGON.GOV
 PHONE: (503) 722-5500
 FAX: (503) 656-4106



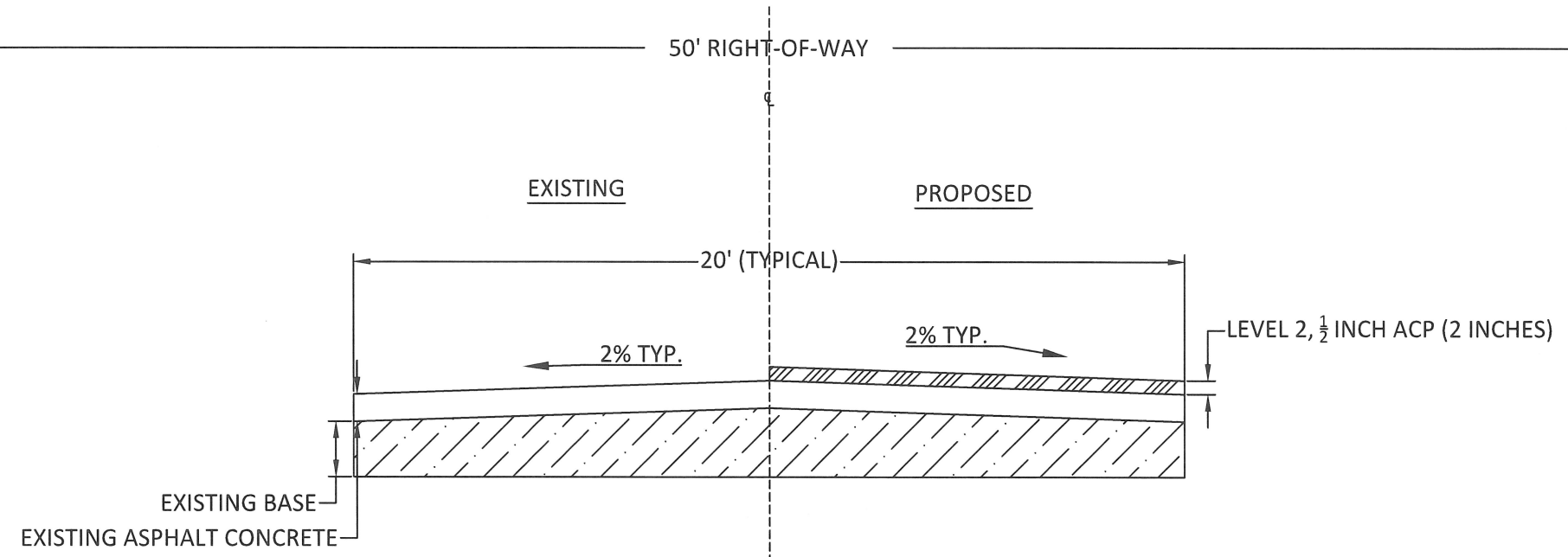
CONTRACTOR TBD

CITY OF WEST LINN
 2017 ROAD PROGRAM
 Mapleton Drive
 Cross-Sections

PROJECT DATA	
PROJECT NO:	PW-17-01
DESIGNED BY:	LCALVERT
DRAWN BY:	MPALMER
CHECKED BY:	ELAIS
DATE ISSUED:	5/24/17

REVISION	
DATE	DESCRIPTION

SECTION SHEET
M9
 19 OF 26



CROSS-SECTION VIEW
 SCALE: N.T.S.



CITY OF WEST LINN
 22500 SALAMO ROAD
 WEST LINN, OR 97068
 WESTLINNOREGON.GOV
 PHONE: (503) 722-5500
 FAX: (503) 656-4106



CONTRACTOR TBD

CITY OF WEST LINN
 2017 ROAD PROGRAM
 Old River Drive
 Sta. 0+00 to 3+51

PROJECT DATA

PROJECT NO:	PW-17-01
DESIGNED BY:	LCALVERT
DRAWN BY:	MPALMER
CHECKED BY:	ELAIS
DATE ISSUED:	5/24/17

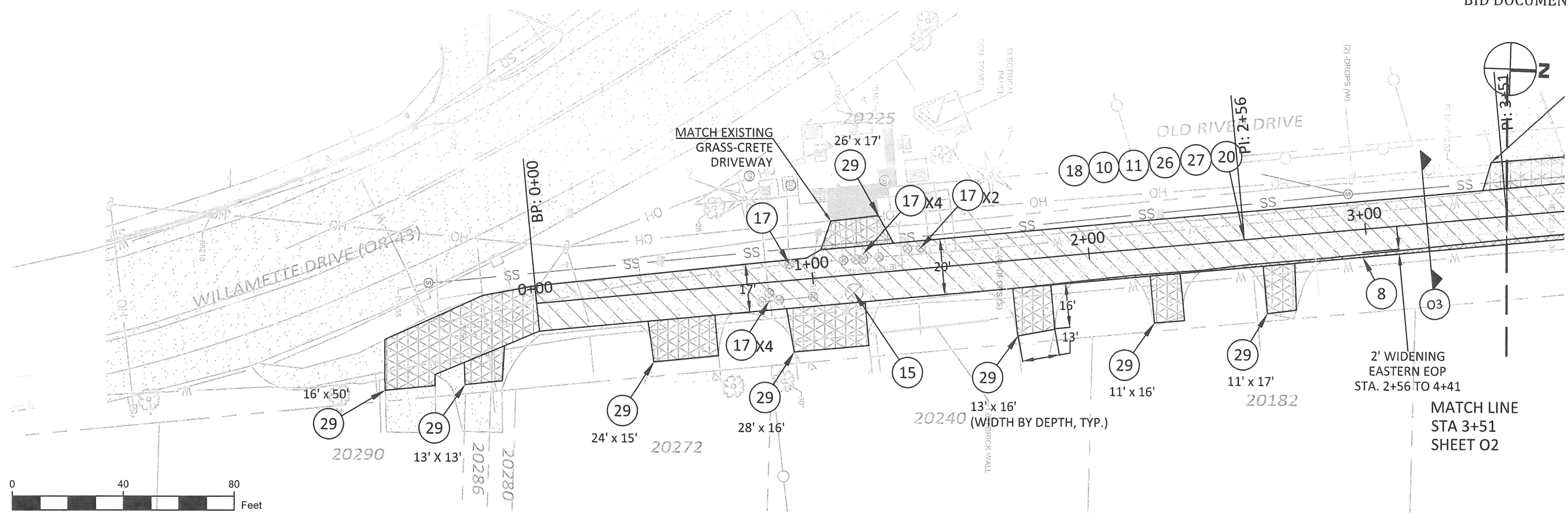
REVISION

DATE	DESCRIPTION

PLAN SHEET

O1

20 OF 26



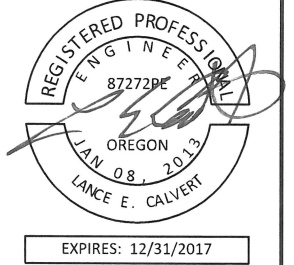
NOTE:

1. DRIVEWAYS (29) INCLUDE (6) AND (22) AS DETERMINED BY CITY INSPECTOR DURING CONSTRUCTION.

ITEM	ODOT SPECIFICATION #	DESCRIPTION	UNIT	ESTIMATE
8	00331.90	12 INCH SUBGRADE STABILIZATION (WIDENING)	SY	21
17	00490.90(d)	ADJUSTING BOXES	EA	11
29	00749.92(a)	ASPHALT APPROACHES	EA	8
15	00490.90(a)	MINOR ADJUSTMENT OF MANHOLES	EA	1
22	00641.90(g)	AGGREGATE BASE, 10 INCHES THICK (DRIVEWAYS)	SY	310
6	00310.92(c)	REMOVAL OF WALKS AND DRIVEWAYS, 12 INCHES	SY	310
10	00344.90(a)	TREATED SUBGRADE, 12 INCHES THICK	SY	751
11	00344.90(c)	PORTLAND CEMENT	TON	22
26	00745.90(a)	LEVEL 2, 3/4 INCH ACP	TON	86
27	00745.90(a)	LEVEL 2, 1/2 INCH ACP	TON	86
18	SP-1	ASPHALT PULVERIZING, 12 INCHES	SY	730



CITY OF WEST LINN
 22500 SALAMO ROAD
 WEST LINN, OR 97068
 WESTLINNOREGON.GOV
 PHONE: (503) 722-5500
 FAX: (503) 656-4106



CONTRACTOR TBD

CITY OF WEST LINN
 2017 ROAD PROGRAM
 Old River Drive
 Sta. 3+51 to 6+85

PROJECT DATA

PROJECT NO: PW-17-01
 DESIGNED BY: LCALVERT
 DRAWN BY: MPALMER
 CHECKED BY: ELAIS
 DATE ISSUED: 5/24/17

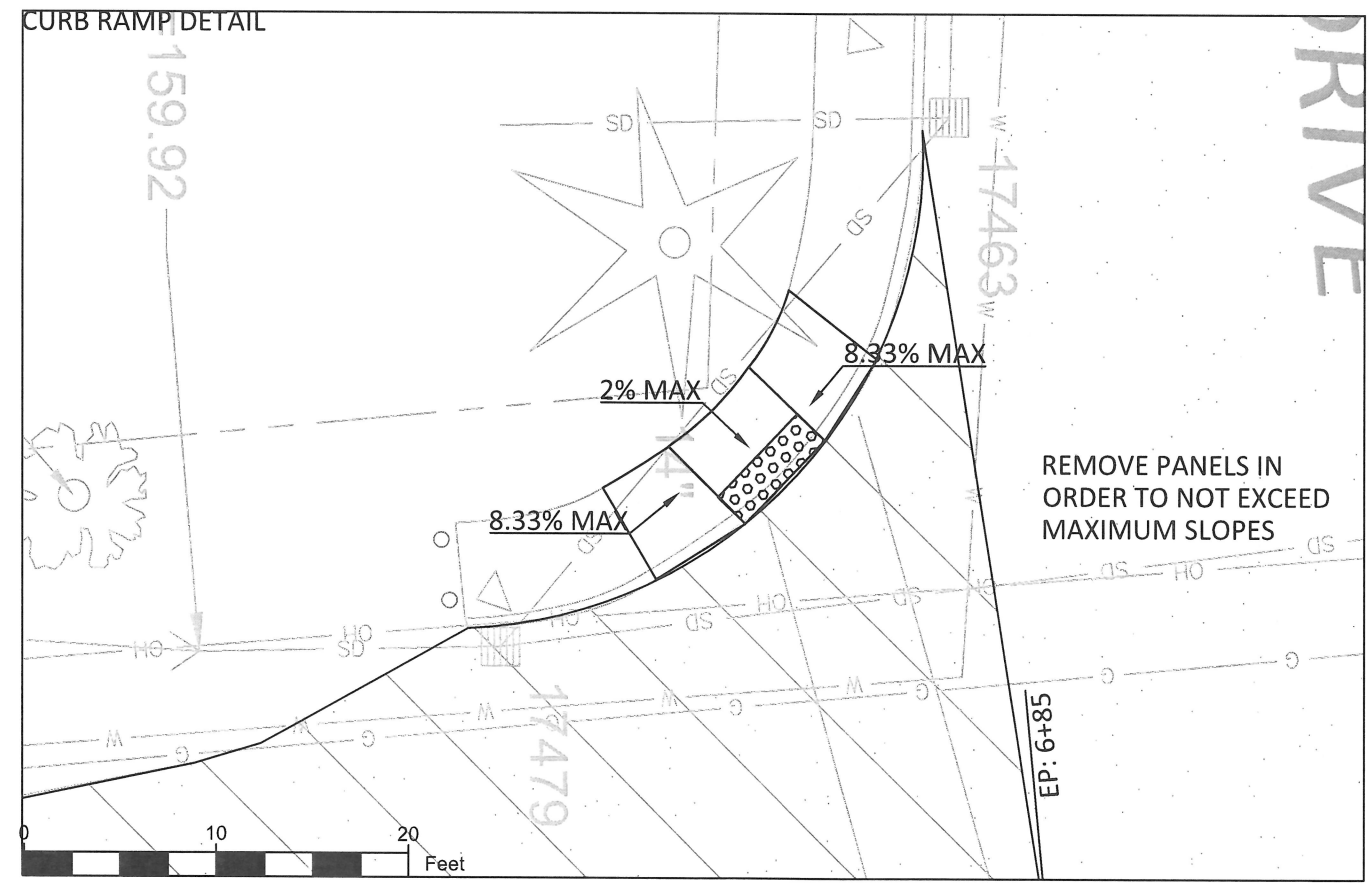
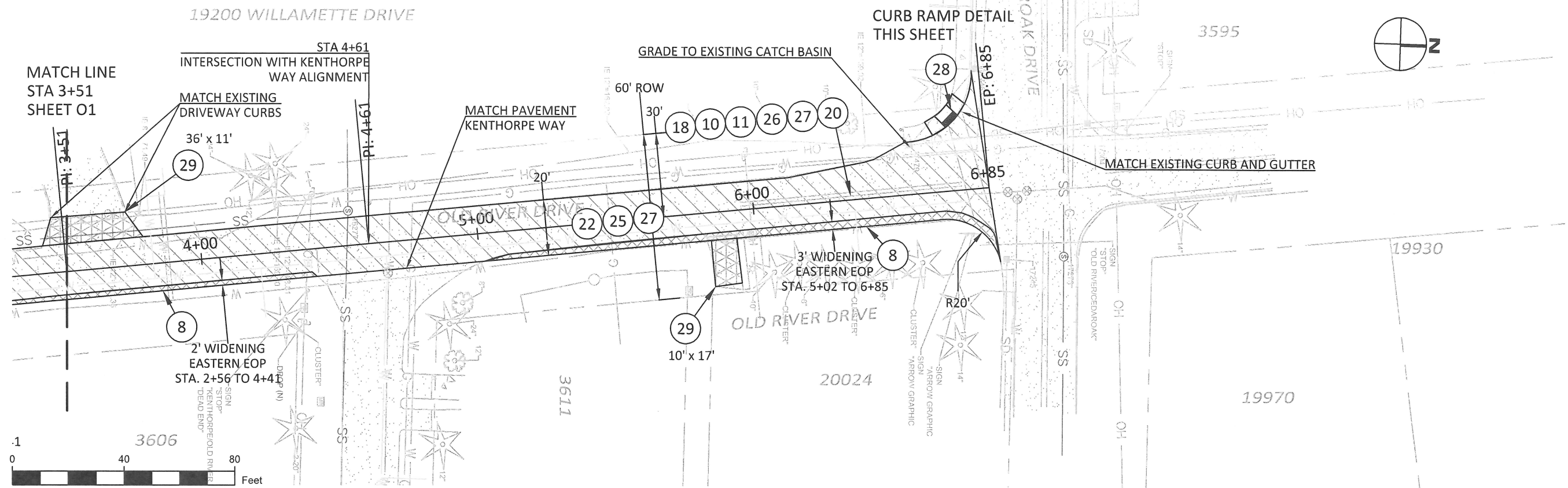
REVISION

DATE	DESCRIPTION

PLAN SHEET

02

21 OF 26



ITEM	ODOT SPECIFICATION #	DESCRIPTION	UNIT	ESTIMATE
8	00331.90	12 INCH SUBGRADE STABILIZATION (WIDENING)	SY	81
29	00749.92(a)	ASPHALT APPROACHES	EA	2
22	00641.90(g)	AGGREGATE BASE, 10 INCHES THICK (DRIVEWAYS)	SY	63
6	00310.92(c)	REMOVAL OF WALKS AND DRIVEWAYS, 12 INCHES	SY	63
10	00344.90(a)	TREATED SUBGRADE, 12 INCHES THICK	SY	818
11	00344.90(c)	PORTLAND CEMENT	TON	24
26	00745.90(a)	LEVEL 2, 3/4 INCH ACP	TON	94
27	00745.90(a)	LEVEL 2, 1/2 INCH ACP	TON	94
18	SP-1	ASPHALT PULVERIZING, 12 INCHES	SY	737
28	00759.90	ADA CURB RAMP	EA	1

NOTE:
 1. DRIVEWAYS (29) INCLUDE (6) AND (22) AS DETERMINED BY CITY INSPECTOR DURING CONSTRUCTION.



CITY OF WEST LINN
 22500 SALAMO ROAD
 WEST LINN, OR 97068
 WESTLINN.OREGON.GOV
 PHONE: (503) 722-5500
 FAX: (503) 656-4106



CONTRACTOR TBD

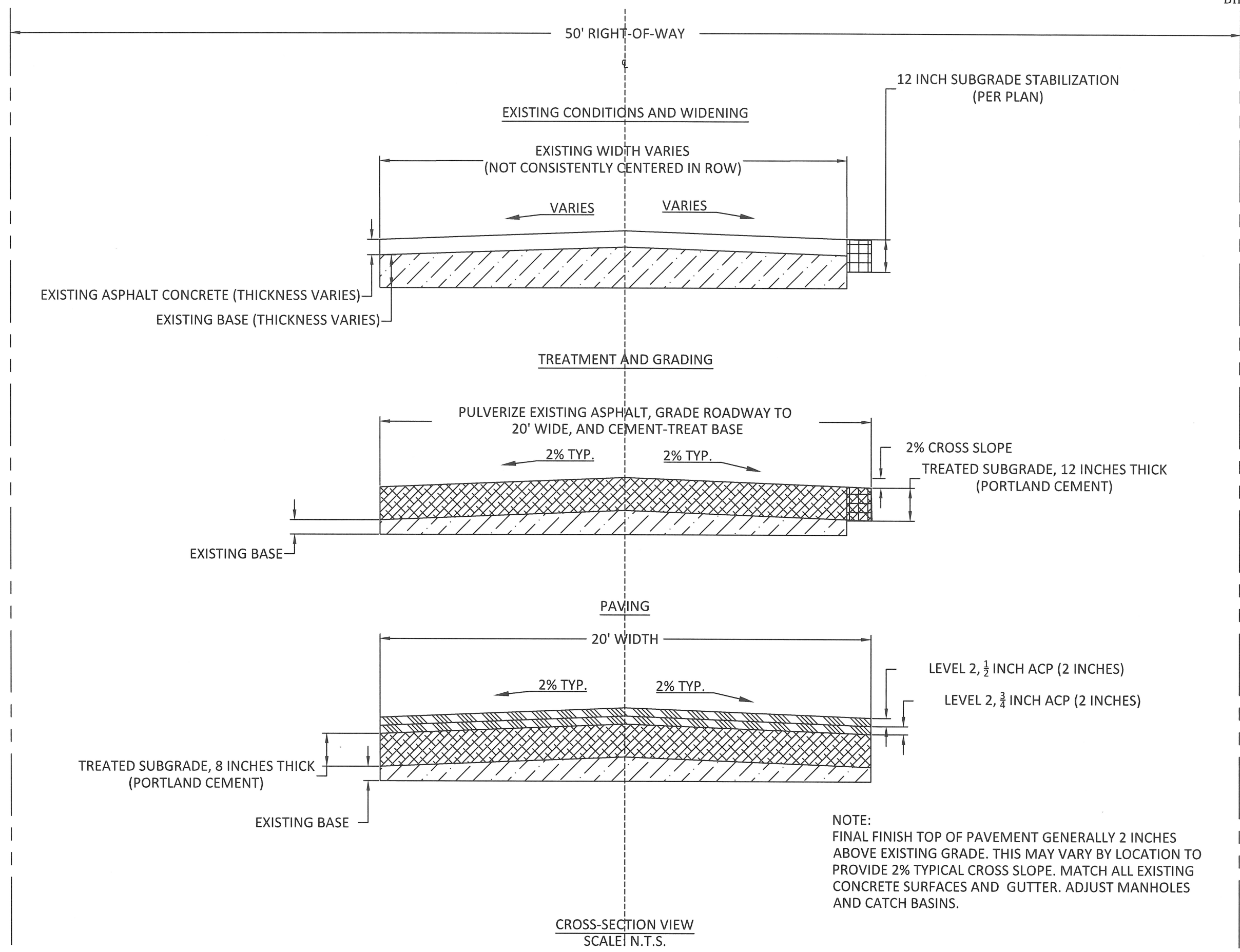
CITY OF WEST LINN
 2017 ROAD PROGRAM

Old River Drive
 Cross-Sections

PROJECT DATA	
PROJECT NO:	PW-17-01
DESIGNED BY:	LCALVERT
DRAWN BY:	MPALMER
CHECKED BY:	ELAIS
DATE ISSUED:	5/24/17

REVISION	
DATE	DESCRIPTION

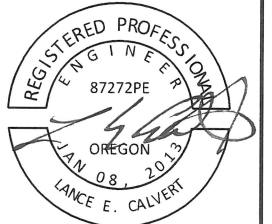
SECTION SHEET
03
 22 OF 26



NOTE:
 FINAL FINISH TOP OF PAVEMENT GENERALLY 2 INCHES ABOVE EXISTING GRADE. THIS MAY VARY BY LOCATION TO PROVIDE 2% TYPICAL CROSS SLOPE. MATCH ALL EXISTING CONCRETE SURFACES AND GUTTER. ADJUST MANHOLES AND CATCH BASINS.



CITY OF WEST LINN
 22500 SALAMO ROAD
 WEST LINN, OR 97068
 WESTLINNOREGON.GOV
 PHONE: (503) 722-5500
 FAX: (503) 656-4106



EXPIRES: 12/31/2017

CONTRACTOR TBD

CITY OF WEST LINN
 2017 ROAD PROGRAM

Standard Details

PROJECT DATA

PROJECT NO:	PW-17-01
DESIGNED BY:	LCALVERT
DRAWN BY:	MPALMER
CHECKED BY:	ELAIS
DATE ISSUED:	5/24/17

REVISION

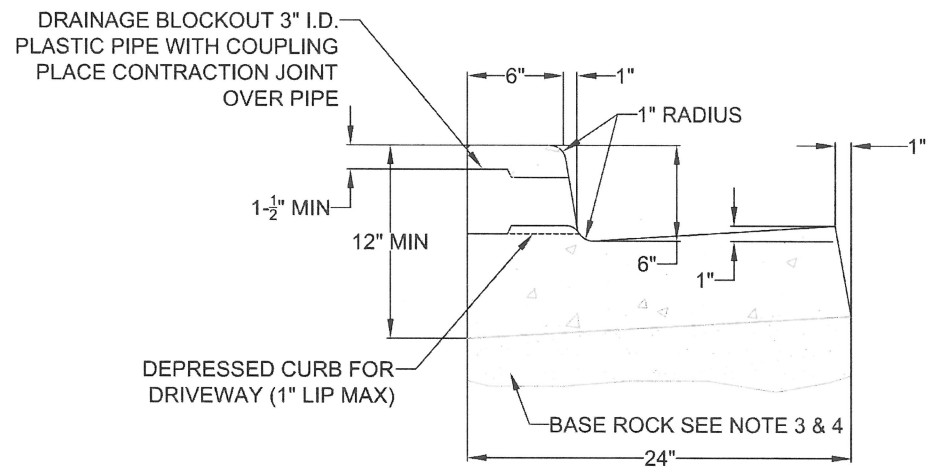
DATE	DESCRIPTION

DETAIL SHEET

D1

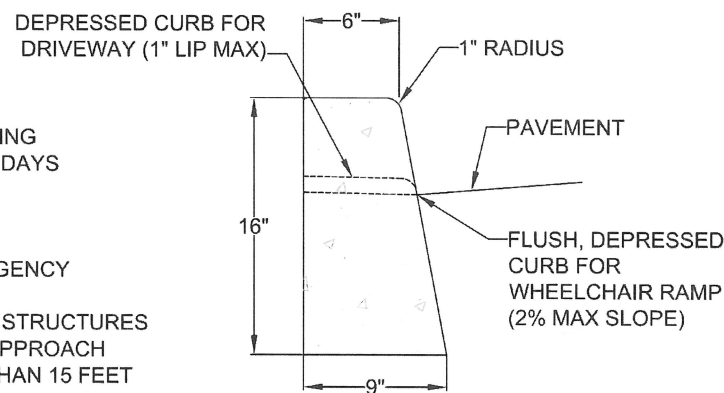
23 OF 26

THIS DETAIL DRAWING SHALL NOT BE ALTERED OR CHANGED IN ANY MANNER EXCEPT BY THE CITY ENGINEER. IT IS THE RESPONSIBILITY OF THE USER TO ACQUIRE THE MOST CURRENT VERSION OF THE DETAIL.



FLUSH, DEPRESSED CURB FOR WHEELCHAIR RAMP 2% MAX SLOPE

TYPICAL CURB AND GUTTER



TYPICAL STRAIGHT CURB

NOTE:

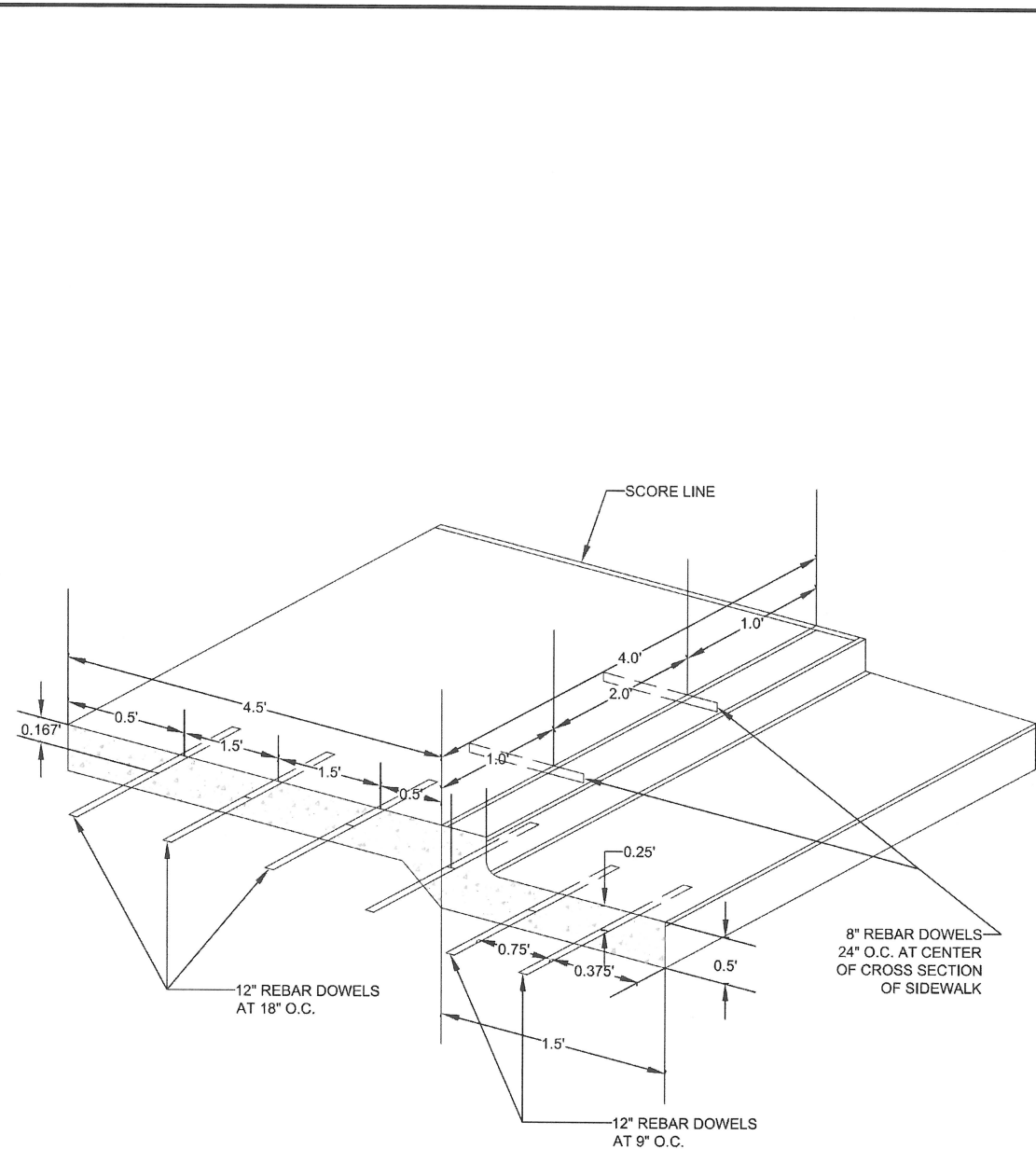
- CONCRETE SHALL HAVE A BREAKING STRENGTH OF 3300 PSI AFTER 28 DAYS
- CONTRACTION JOINTS:
 - TO BE PROVIDED:
 - AT EACH POINT OF TANGENCY
 - AT EACH COLD JOINT
 - AT EACH SIDE OF INLET STRUCTURES
 - AT BOTH SIDES OF AN APPROACH
 - SPACING TO BE NOT MORE THAN 15 FEET
 - THE DEPTH OF THE JOINT SHALL BE AT LEAST 1/3 OF THE THICKNESS OF CONCRETE
 - EXPANSION JOINTS SHALL NOT BE USED
- BASE ROCK - 1-1/2"-0", 95% COMPACTION PER AASHTO T-180
 ROCK SHALL BE TO SUBGRADE OF THE STREET SECTION OR 4" IN DEPTH, WHICHEVER IS GREATER
- FULL DEPTH PREPARED ROCK SECTION SHALL EXTEND 1' HORIZONTALLY BEYOND BOTH SIDES OF CURB AND GUTTER
- DRAINAGE BLOCK - 3" DIA. PLASTIC PIPE
 - DRAINAGE ACCESS THROUGH EXISTING CURBS SHALL BE DONE BY:
 - CORE DRILLING
 - VERTICAL SAWCUT OF CURB 24" EACH SIDE OF DRAIN AND RE-POURED TO FULL DEPTH OF CURB
- STAMP TOP OF CURB WITH "W" AT WATER SERVICE CROSSING AND "S" AT SANITARY LATERAL CROSSING

TYPICAL CURBS



DATE: 2010
 DRAWING NO. WL-501
 FILE NO.

THIS DETAIL DRAWING SHALL NOT BE ALTERED OR CHANGED IN ANY MANNER EXCEPT BY THE CITY ENGINEER. IT IS THE RESPONSIBILITY OF THE USER TO ACQUIRE THE MOST CURRENT VERSION OF THE DETAIL.



CURB, GUTTER AND SIDEWALK DOWELING DETAIL



DATE: 2010
 DRAWING NO. WL-511
 FILE NO.



CITY OF WEST LINN
22500 SALAMO ROAD
WEST LINN, OR 97068
WESTLINNOREGON.GOV
PHONE: (503) 722-5500
FAX: (503) 656-4106



EXPIRES: 12/31/2017

CONTRACTOR TBD

CITY OF WEST LINN
2017 ROAD PROGRAM

Standard Details

PROJECT DATA

PROJECT NO:	PW-17-01
DESIGNED BY:	LCALVERT
DRAWN BY:	MPALMER
CHECKED BY:	ELAIS
DATE ISSUED:	5/24/17

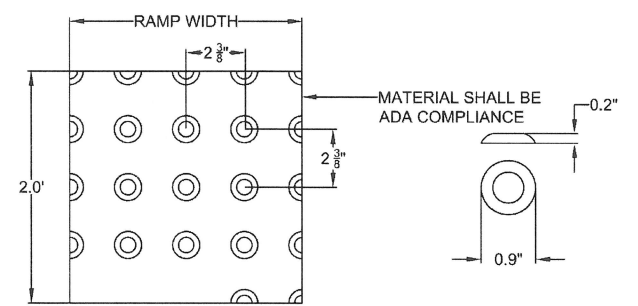
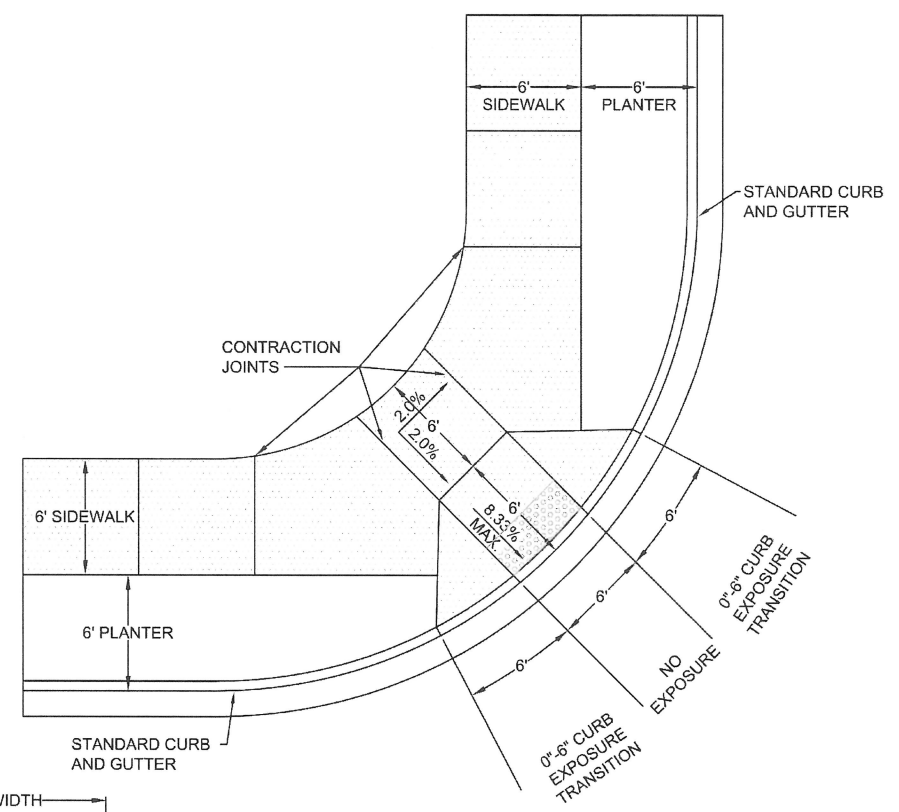
REVISION

DATE	DESCRIPTION

DETAIL SHEET

D2

THIS DETAIL DRAWING SHALL NOT BE ALTERED OR CHANGED IN ANY MANNER EXCEPT BY THE CITY ENGINEER. IT IS THE RESPONSIBILITY OF THE USER TO ACQUIRE THE MOST CURRENT VERSION OF THE DETAIL.



RAMP TEXTURE PATTERN DETAIL TRUNCATED DOME DETAIL

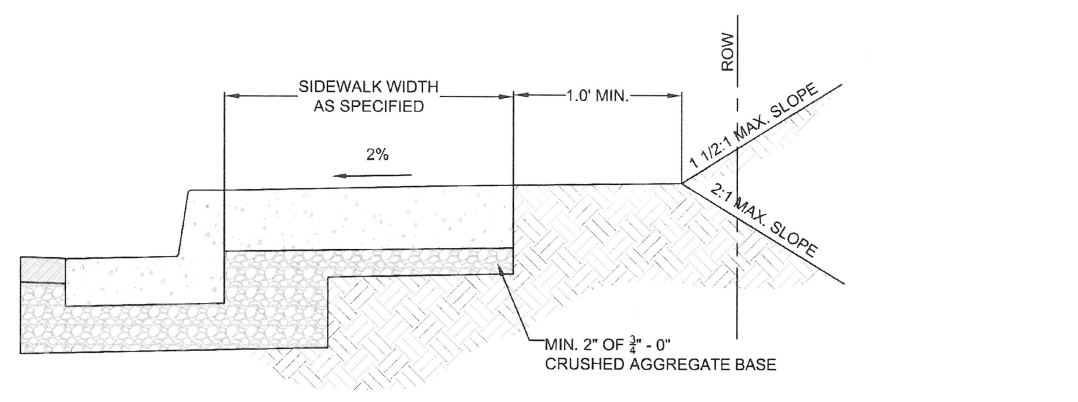
NOTE:

- LANDING AT TOP OF RAMP SHALL NOT EXCEED 2% IN ANY DIRECTION AND SHALL BE A MINIMUM OF 60" x 60".
- RAMP CROSS SLOPE SHALL NOT EXCEED 2% (AS MEASURED PERPENDICULAR TO PEDESTRIAN TRAFFIC FLOW).
- TRUNCATED DOME MUST EXTEND THE FULL WIDTH OF THE RAMP AND COVER THE FIRST 2 FEET OF THE RAMP CLOSEST TO THE STREET.
- TRANSITIONS FROM THE RAMP TO THE WALKWAY, GUTTER, AND STREET MUST BE FLUSH (LEVEL) AND FREE OF ABRUPT LEVEL CHANGES.
- THE GUTTER OR ADJACENT ROADWAY MUST HAVE A SLOPE OF NO MORE THAN 5 PERCENT (1:20) TOWARD THE RAMP.
- FLARED SIDES ("WING") OF THE CURB RAMP SHALL NOT EXCEED 10% IN SLOPE (8.33% IF PEDESTRIAN TRAVEL IS REQUIRED OVER THEM PER ADA STANDARDS - I.E. IF MINIMUM 48" x 48" (FOR EXISTING SITES ONLY) LANDING IS NOT PROVIDED AT TOP OF RAMP).
- CONCRETE STRENGTH SHALL BE 3300 PSI.
- PLACE CONTRACTION JOINTS AS SHOWN ABOVE.
- NO ABOVE GROUND UTILITIES ARE PERMITTED WITHIN RAMP AREA.
- WHEN EITHER OPPOSING CURB RAMP HAS AN EXISTING TWIN RAMP, USE DETAIL WL-507B.

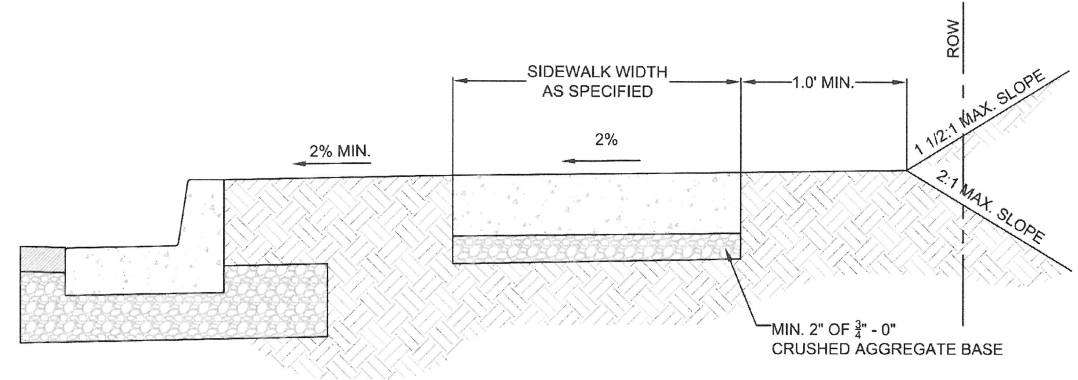
**SINGLE CURB RAMP
(ALLOWED WITH CITY
ENGINEER APPROVAL ONLY)**

	DATE: 2010
	DRAWING NO. WL-507A
	FILE NO.

THIS DETAIL DRAWING SHALL NOT BE ALTERED OR CHANGED IN ANY MANNER EXCEPT BY THE CITY ENGINEER. IT IS THE RESPONSIBILITY OF THE USER TO ACQUIRE THE MOST CURRENT VERSION OF THE DETAIL.



TYPICAL CURB TIGHT SIDEWALK



SIDEWALK AWAY FROM CURB

NOTE:

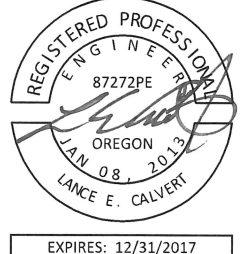
- CONCRETE SHALL BE 3300 PSI AT 28 DAYS.
- PANEL LENGTHS SHALL BE EQUAL TO THE SIDEWALK WIDTH, BUT MAY BE ADJUSTED WITH THE CITY ENGINEER'S APPROVAL.
- CONTRACTION JOINTS (1/3RD OF THE THICKNESS OF CONCRETE) SHALL BE PLACED EVERY THIRD PANEL, WITH A MAX. SPACING OF 15 FEET. JOINTS SHALL ALSO BE PLACED AT THE SIDES OF DRIVEWAY APPROACHES, UTILITY VAULTS, AND WHEELCHAIR RAMPS.
- A CURING COMPOUND SHALL BE USED. WHITE REFLECTIVE SHEETING SHALL BE USED IN CASE OF RAIN.
- FOR SIDEWALKS ADJACENT TO THE CURB AND POURED AT THE SAME TIME AS THE CURB, THE JOINT BETWEEN THEM SHALL BE A TROVELED JOINT WITH A MIN. 1/2" RADIUS.
- THE SIDEWALK SHALL HAVE A MIN. THICKNESS OF 6" IF THE SIDEWALK IS INTENDED AS A PORTION OF THE DRIVEWAY. OTHERWISE, THE SIDEWALK SHALL HAVE A MIN. THICKNESS OF 4".
- DRAIN BLOCKOUTS IN THE CURB SHALL BE EXTENDED TO THE BACK OF THE SIDEWALK WITH A 3" DIAMETER PLASTIC PIPE AT A 2% SLOPE. A CONTRACTION JOINT SHALL BE PLACED OVER THE PIPE.

CONCRETE SIDEWALK
CROSS SECTION

	DATE: 2010
	DRAWING NO. WL-508
	FILE NO.



CITY OF WEST LINN
22500 SALAMO ROAD
WEST LINN, OR 97068
WESTLINNOREGON.GOV
PHONE: (503) 722-5500
FAX: (503) 656-4106



CONTRACTOR TBD

CITY OF WEST LINN
2017 ROAD PROGRAM

Standard Details

PROJECT DATA

PROJECT NO:	PW-17-01
DESIGNED BY:	LCALVERT
DRAWN BY:	MPALMER
CHECKED BY:	ELAIS
DATE ISSUED:	5/24/17

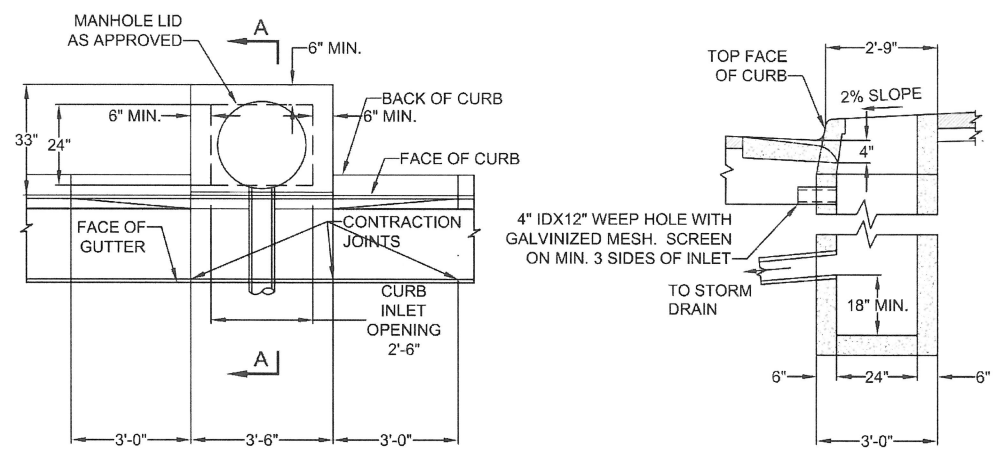
REVISION

DATE	DESCRIPTION

DETAIL SHEET

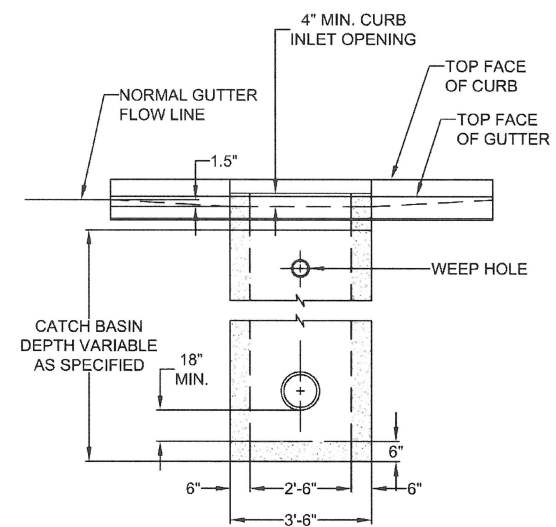
D3

THIS DETAIL DRAWING SHALL NOT BE ALTERED OR CHANGED IN ANY MANNER EXCEPT BY THE CITY ENGINEER. IT IS THE RESPONSIBILITY OF THE USER TO ACQUIRE THE MOST CURRENT VERSION OF THE DETAIL.

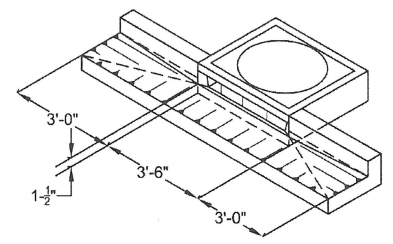


PLAN VIEW

SECTION A-A



FRONT VIEW



PERSPECTIVE VIEW SHOWING DEPRESSED GUTTER AT CURB INLET

NOTE:

- ALL FABRICATED METAL PARTS SHALL BE HOT-DIPPED GALVANIZED AFTER FABRICATION.
- CONCRETE STRENGTH SHALL BE 3300 PSI AT 28 DAYS.
- CURB INLET BASE MAY BE PRECAST OR CAST-IN-PLACE.
- FOR SLOPES OF 5% OR GREATER, USE DWG. WL-601.

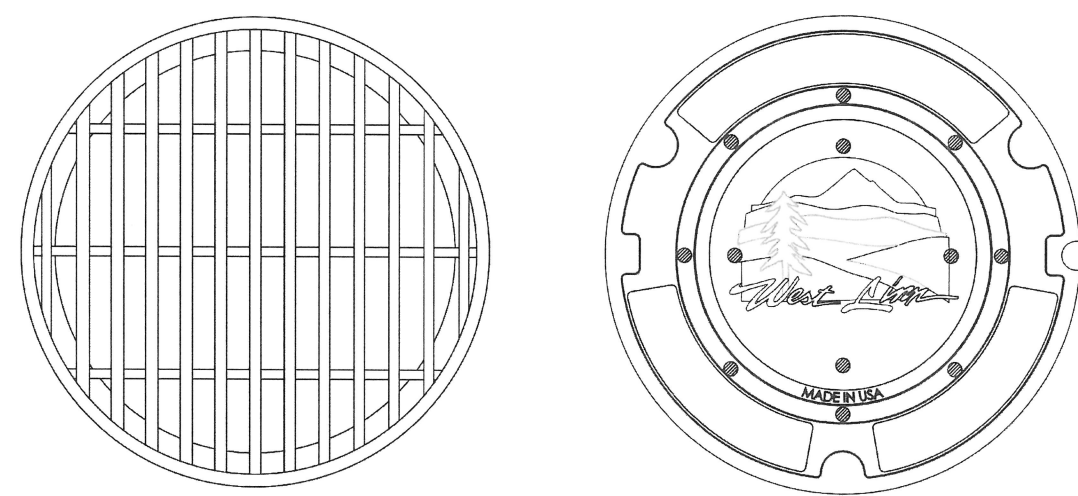
GUTTER INLET
2 1/2 A



CITY OF
West Linn

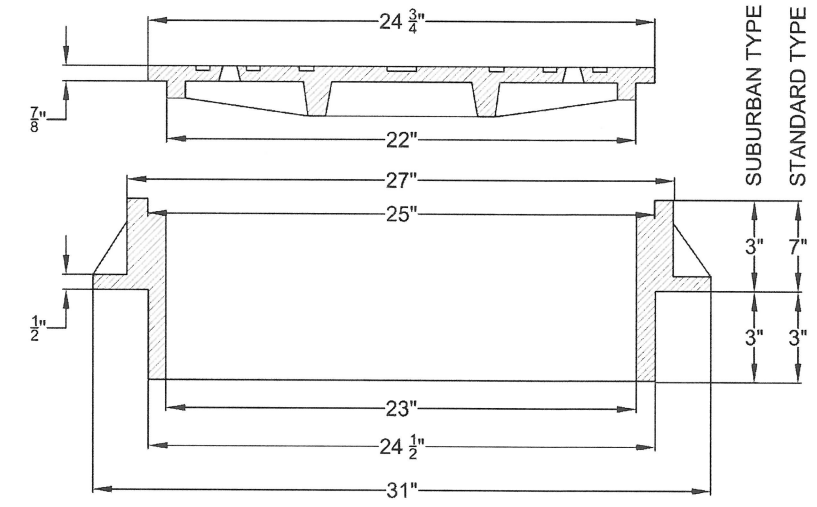
DATE:	2010
DRAWING NO.	WL-600
FILE NO.	

THIS DETAIL DRAWING SHALL NOT BE ALTERED OR CHANGED IN ANY MANNER EXCEPT BY THE CITY ENGINEER. IT IS THE RESPONSIBILITY OF THE USER TO ACQUIRE THE MOST CURRENT VERSION OF THE DETAIL.



GRATE

STORM



NOTE:

- USE SUBURBAN TYPE ONLY IN NON-TRAFFIC AREAS, AND ONLY WITH APPROVAL BY THE CITY.
- COVER AND FRAME SHALL BE GRAY CAST IRON ASTM A-48 CLASS 30.
- COVER AND FRAME TO BE MACHINED TO A TRUE BEARING ALL AROUND.
- NOTCH LID FOR LIFTING HOOK.
- OPEN GRATES REQUIRE APPROVAL BY CITY, AND MUST BE BICYCLE SAFE IF USED IN TRAFFIC AREAS.

MANHOLE
FRAME AND COVER

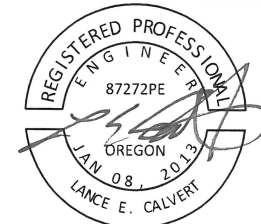


CITY OF
West Linn

DATE:	2010
DRAWING NO.	WL-605
FILE NO.	



CITY OF WEST LINN
 22500 SALAMO ROAD
 WEST LINN, OR 97068
 WESTLINNOREGON.GOV
 PHONE: (503) 722-5500
 FAX: (503) 656-4106



EXPIRES: 12/31/2017

CONTRACTOR TBD

CITY OF WEST LINN
 2017 ROAD PROGRAM

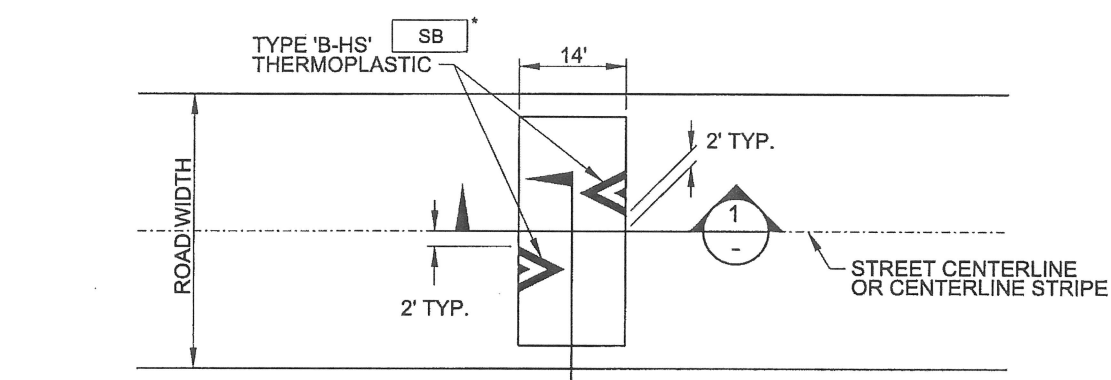
Standard Details

PROJECT DATA	
PROJECT NO:	PW-17-01
DESIGNED BY:	LCALVERT
DRAWN BY:	MPALMER
CHECKED BY:	ELAIS
DATE ISSUED:	5/24/17

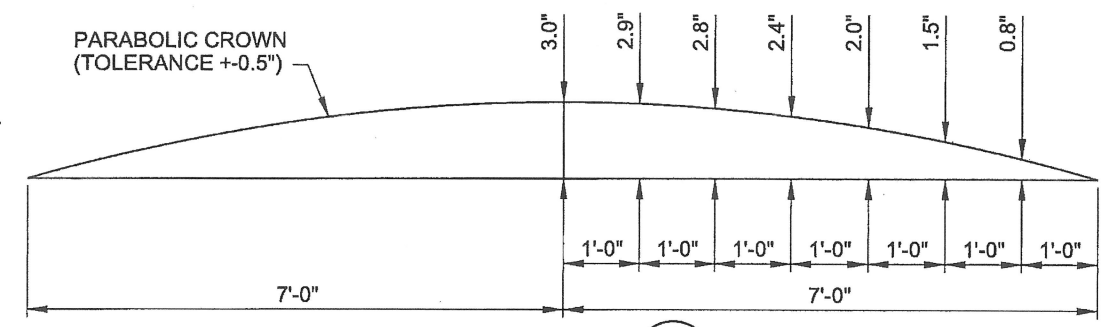
REVISION	
DATE	DESCRIPTION

DETAIL SHEET
D4
 26 OF 26

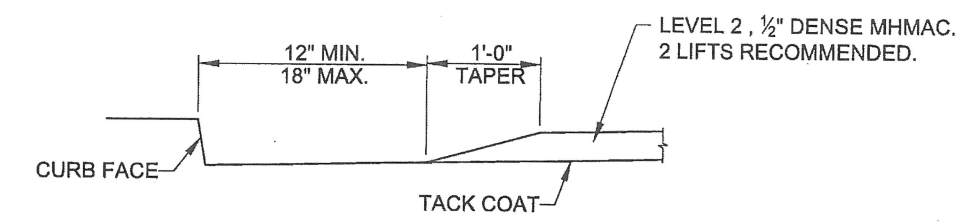
Scale: 1/4" = 1'-0"
 File Name: U:\User\erickson\DRN\CITY OF PORTLAND - STANDARD DRAWINGS\SECTION DIVISIONS\3-STREETS\MICROSTATION\STD DRAWING NO P-440\PLOT_SHT_P-440.dgn
 Plot Date: 5/24/2016 11:50 AM



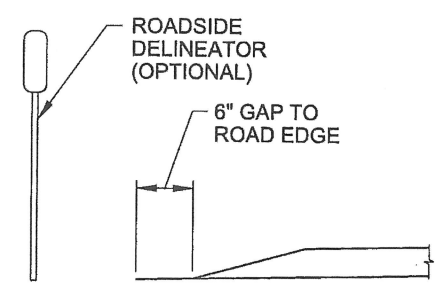
PLAN



SECTION 1



CURB DETAIL



SHOULDER DETAIL FOR STREETS WITHOUT CURBS

SECTION 2

NOTE:
 CITY WILL INSTALL PAVEMENT
 MARKINGS AND SIGNAGE.

NOTES:

1. ~~PAVEMENT MARKINGS ON SPEED BUMP SHALL BE INSTALLED CONCURRENTLY WITH THE ASPHALT STRUCTURES. FOLLOW MANUFACTURER'S INLAY PROCEDURES FOR PAVEMENT MARKINGS ON SPEED BUMPS.~~
2. ~~PAVEMENT MARKINGS AND SIGNS SHALL BE INSTALLED BEFORE OPENING ANY LANE TO TRAFFIC THAT IS OCCUPIED BY A NEW SPEED BUMP.~~
3. PAVEMENT MARKING LAYOUT ASSUMES A TWO-LANE, TWO-WAY STREET WITH PARKING ON BOTH SIDES. FOR ALL OTHER CONFIGURATIONS SUBMIT REVISED LAYOUT TO ENGINEER FOR APPROVAL.

* SEE PBOT STANDARD DETAIL P-435

The selection and use of this Standard Drawing, while designed in accordance with generally accepted engineering principles and practices, is the sole responsibility of the user.	BUREAU OF TRANSPORTATION CITY OF PORTLAND, OREGON City Engineer	
	Standard Drawing Title 14' ASPHALT LOCAL SPEED BUMP	
Note: All material and workmanship shall be in accordance with the City of Portland Standard Construction Specifications.	Effective Date: 05-14-2015	Standard Drawing No. P-440
	Calc. Book No.: Calc_Book_No.	Baseline Report Date: Date