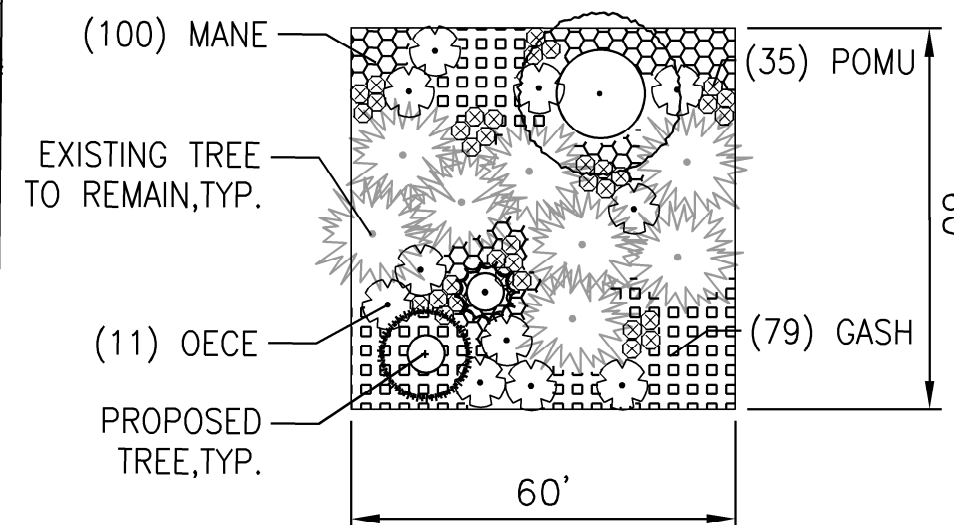


LEGEND

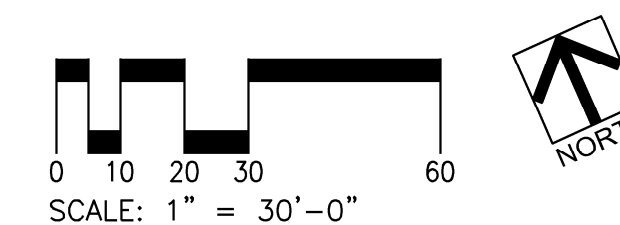
- STORMWATER QUALITY PLANTINGS: SIDE SLOPES
- STORMWATER QUALITY PLANTINGS: TREATMENT AREA
- PLANTING AREAS
- ROUGH SEED
- EXISTING TREES TO REMAIN



SHRUB PLANTING TEMPLATE
1" = 30'

KEY NOTES

1. PROTECT EXISTING TREES IN THIS AREA. REPAIR AND REPLACE ALL EXISTING PLANTING AREAS DAMAGED BY CONSTRUCTION ACTIVITIES. WORK SHALL BE DONE TO THE OWNER'S SATISFACTION. THIS IS A REQUIREMENT FOR ALL SITE WORK ASSOCIATED WITH THE PROJECT WHETHER SPECIFICALLY INDICATED OR OTHERWISE OCCURRING DURING THE COURSE OF NORMAL CONSTRUCTION ACTIVITIES.



WATER QUALITY PLANTING REQUIREMENTS
(Per City of Portland Stormwater Management Manual)

STORMWATER QUALITY SWALE:
TOTAL AREA=380 SF
PLANTS REQUIRED: 115 herbaceous/100SF=437

DETENTION FACILITY:
TOTAL AREA=6,000 SF
TREATMENT AREA=1,080 SF
PLANTS REQUIRED: 115 Herbaceous Plants/100 SF = 1,242

SIDE SLOPES=4,920 SF
TREES REQUIRED (Ev. or Decid.): 1 TREE/300 SF= 17
SHRUBS REQUIRED:
Large Shrubs: 4/100 SF=197
Medium to Small Shrubs: 6/100 SF=295
Groundcover: 70/100 SF=3,444

PLANT SCHEDULE: GENERAL LANDSCAPE

SYMBOL	BOTANICAL NAME	COMMON NAME	SIZE	SPACING	QUANTITY	E/D	COMMENTS
TREES							
	ACER CIRCINATUM	VINE MAPLE	2" CAL.	AS SHOWN	20	D	BRANCHED AT 4'-0"; NARROW FORM
	CALOCEDRUS DECURRENS	INCENSE CEDAR	6-8FT.	AS SHOWN	22	E	
	PSEUDOTSUGA MENZIESII	DOUGLAS FIR	6-8FT.	AS SHOWN	12	E	
	QUERCUS GARRYANA	OREGON WHITE OAK	2" CAL.	AS SHOWN	5	D	
	PICEA ENLEMANNII	ENGLEMANN SPRUCE	6-8FT.	AS SHOWN	13	E	
	THUJA PLICATA	WESTERN RED CEDAR	6-8FT.	AS SHOWN	11	E	
SHRUBS							
	GASH GAULTHERIA SHALLON	SALAL	#1	36" O.C.		E	
	MANE MAHONIA NERVOSA	DULL OREGON GRAPE	#1	24" O.C.		E	
	OECE OEMLARIA CERASIFORMIS	OCEAN SPRAY	#5	36" O.C.		D	
	POMU POLYSTICHUM MUNITUM	SWORDFERN	#1	36" O.C.		E	
SEED							
	HYDROSEED PROTOME 710	FLOWERING XERISCAPE MIX	2 LBS/1000 SF				
BULBS							
	LILIUM COLUMBIANUM	TIGER LILY	BULB		200		PLANT IN CLUSTERS SEE SHEET L-D7

PLANT SCHEDULE: STORMWATER QUALITY SWALE (380 SF)

SYMBOL	BOTANICAL NAME	COMMON NAME	SIZE	SPACING	QUANTITY	E/D	COMMENTS
HERBACEOUS							
	JUNCUS PATENS	SPREADING RUSH	4" POT	12" O.C.	218	E	PLANT IN SAME SPECIES GROUPS OF 5-7 PLANTS
	SCIRPUS MICROCARPUS	SMALL FRUITED BULRUSH	4" POT	12" O.C.	219	E	
SEED							
	HYDROSEED PROTOME 440	NATIVE BIO-FILTER MIX	1 LB/1000 SF				

PLANT SCHEDULE: STORMWATER QUALITY DETENTION FACILITY (6,000 SF)

SYMBOL	BOTANICAL NAME	COMMON NAME	SIZE	SPACING	QUANTITY	E/D	COMMENTS
TREATMENT AREA (1,080 SF)							
HERBACEOUS							
	JUNCUS PATENS	SPREADING RUSH	PLUGS	6/SF	621	E	PLANT IN SAME SPECIES GROUPS OF 5-7 PLANTS
	SCIRPUS MICROCARPUS	SMALL FRUITED BULRUSH	PLUGS	6/SF	621	E	
SEED							
	HYDROSEED PROTOME 440	NATIVE BIO-FILTER MIX	1 LB/1000 SF				
SIDE SLOPES (4,920 SF)							
TREES							
	ACER CIRCINATUM	VINE MAPLE	#2/2' HT.	SINGLE	10	D	
	FRAXINUS LATIFOLIA	OREGON ASH	#2/3' HT.	SINGLE	7	D	
LARGE SHRUBS							
	CORNUS SERICEA	RED-TWIG DOGWOOD	#1	36" O.C.	98	D	PLANT IN SAME SPECIES GROUPS OF 5-7 PLANTS
	ROSA NUTKANA	NOOTKA ROSE	#1	48" O.C.	99	D	
MEDIUM/SMALL SHRUBS							
	MAHONIA AQUIFOLIUM	OREGON GRAPE	#1	36" O.C.	148	D	
	SYMPHORICARPOS ALBA	SNOWBERRY	#1	36" O.C.	147	D	
GROUNDCOVER							
	ARCTOSTAPHYLOS UVA-URSI	KINNIKINNICK	4" POT	12" O.C.	1,722	E	
	MAHONIA REPENS	CREeping MAHONIA	4" POT	12" O.C.	1,722	E	
SEED							
	HYDROSEED PROTOME 440	NATIVE BIO-FILTER MIX	1 LB/1000 SF				

PLANTING NOTES

1. CONTRACTOR TO VERIFY LOCATION OF EXISTING TREES INDICATED TO REMAIN PRIOR TO SOIL PREPARATION. PROTECT ALL TREES AND SHRUBS INDICATED TO REMAIN. COORDINATE WITH THE OWNER'S REPRESENTATIVE.
2. PLANTING AREAS TO BE SUFFICIENTLY CLEANED OF ALL CONSTRUCTION MATERIALS, INCLUDING IMPORTED ROCK, TO THE SATISFACTION OF THE OWNER'S REPRESENTATIVE BEFORE BEGINNING ANY LANDSCAPE WORK.
3. IDENTIFY ALL PLANTING AREAS IN FIELD WITH WHITE FIELD-MARKING CHALK OR APPROVED EQUAL. PLANTING BEDS TO BE ADJUSTED AND APPROVED BY OWNER'S REPRESENTATIVE PRIOR TO PLANT LOCATION.
4. FOR PLANTING OCCURRING IN MASSES OF SAME SPECIES PLANT, LABELING REFERS TO ALL ADJACENT IDENTICAL SYMBOLS. REFER TO DETAILS AND LEGEND FOR SPACING INFORMATION.
5. THE OWNER'S REPRESENTATIVE WILL APPROVE INDIVIDUAL PLANT MATERIAL AND LOCATION OF PLANT MATERIAL PRIOR TO INSTALLATION. REFER TO SPECIFICATIONS FOR PROCEDURE.
6. SHRUBS AND GROUNDCOVER TO BE PLANTED A MINIMUM OF ONE HALF THEIR ON CENTER SPACING AWAY FROM PAVEMENT EDGES; UNLESS OTHERWISE NOTED.
7. PROVIDE ROOT BARRIER AROUND ALL TREES WITHIN 5' OF PAVING, CURBS, WALLS, BUILDINGS, UTILITY DUCTS AND OTHER APPURTENANCES.
8. PLANT QUANTITIES INDICATED ARE FOR THE CONVENIENCE OF THE CONTRACTOR ONLY. CONTRACTOR IS RESPONSIBLE FOR PROVIDING PLANTS IN QUANTITIES AND LOCATIONS SHOWN ON DRAWINGS.
9. PROVIDE JUTE NETTING ON ALL SLOPES WITH GRADIENT OF 2:1 OR GREATER AS DIRECTED IN THE FIELD BY THE OWNER'S REPRESENTATIVE. STAPLE FABRIC TO GROUND WITH METAL STAKES AT 4' O.C. SEE EROSION CONTROL MATTING DETAIL IN THESE DRAWINGS.

PROJECT NAME: CITY OF WEST LINN, OREGON
BOLTON RESERVOIR REPLACEMENT
PROJECT NO. PW 14-06

SHEET TITLE: LANDSCAPE PLAN
RESERVOIR SITE

DATE: SEPTEMBER 2015

MSA PROJECT: 14-1586.0601

REGISTERED 588
LANDSCAPE ARCHITECT
Chelsea M. McCann
OREGON

DESIGNED: JP/KD
DRAWN: KD
CHECKED: JP/KD
APPROVED: CM

NO. DATE REVISION

BY

SCALE: VERT: AS SHOWN
HORIZ: AS SHOWN

NOTICE: IF THIS BAR DOES NOT MEASURE 1" THEN DRAWING IS NOT TO SCALE

111 SW OAK SUITE 200
PORTLAND, OR 97204
503-228-3122

WALKER MACY

Murray Smith & Associates, Inc.
Engineers/Planners
121 S.W. Shiloh, Suite 100
Portland, Oregon 97204
PHONE: 503-225-4010
FAX: 503-225-4022