

Pavement Management Program Budget Options Report



City of West Linn
Public Works Dept.

June, 2011



P.O Box 7840
Salem, OR 97303
Phone: (503) 689-1330
Fax: (503) 689-1440
www.capitolasset.net

MEMORANDUM

FROM: Paul Wigowsky
Capitol Asset & Pavement Services, Inc.
PO Box 7840
Salem, OR 97303

SUBJECT: Pavement Management Budget Options Report

Enclosed you will find the Budget Options Report based on the findings of our inspections of your street network, half of which was inspected in 2009, half in 2011. The Budget Options Report summarizes our findings of the current state of your street network, the likely state of your street network over the next five years, and what steps can be taken to improve the overall condition of the City of West Linn's street network.

The City's overall network pavement condition index (PCI) is currently a 62, on a scale of 0-100. That has decreased from a network PCI of 65 in 2009 and, at the current level of funding for street maintenance it will continue to decrease, falling 8 points over the next five years. As the overall condition of the City's streets continues to fall, the City will lose the opportunity to maintain streets with more cost-effective treatments, such as slurry seals and thin overlays. As streets deteriorate into Poor condition (PCI <50), they will require more extensive treatment such as thick overlays and full reconstructions, treatments that much more expensive.

Four budget option scenarios are presented in the report, ranging from the current projected funding level of \$300,000 over the next five years, to the amount required to bring the street network into Good condition (\$18.7 million over five years). Summaries of the scenarios can be found on pages 7-11. Please note that in the graphs for Scenarios 2-3 (pg 8-10), the PCI increases in the second column, as that is the PCI in 2011, after treatments are applied, then decreases in subsequent years, as the analysis factors in likely deterioration rates for each street. Also note in figures 7-8 on page 11, which compares the results of the four scenarios, that while the percentage of the street network in Good and Very Good condition increases for Scenarios 3-4, the deferred maintenance backlog¹ still increases over the five years, mainly due to the increase in the percentage of streets that fall into Very Poor condition, and that will require costly reconstruction.

¹ *Deferred Maintenance* refers to the dollar amount of maintenance and rehabilitation work that should have been completed to maintain the street in "good" condition, but had to be deferred due to funding deficiencies for preventative maintenance and/or pavement rehabilitation programs.

If you have any questions about the report, please feel free to contact me at paul@capitolasset.net or (503) 551-6891.

Table of Contents

Background	1
Purpose	1
Existing Pavement Conditions	2
Present Cost to Repair the Street Network	3
Future Expenditures for Pavement Maintenance	4
Budget Needs	4
Budget Scenarios	6
<i>Scenario 1—Unconstrained (No deferred maintenance)</i>	7
<i>Scenario 2— Current Investment Level</i>	8
<i>Scenario 3— Maintain Current PCI</i>	9
<i>Scenario 4— Increase Current PCI 5 point</i>	10
Current Pavement Maintenance Practices	12
Recommendations	12
APPENDIX A	
<i>Definitions</i>	
APPENDIX B	
<i>Network Summary Statistics</i>	
<i>Network Replacement Cost</i>	
APPENDIX C	
<i>Needs Analysis Reports</i>	
APPENDIX D	
<i>Scenarios Analysis Reports</i>	
APPENDIX E	
<i>Section Description Report</i>	
APPENDIX F	
<i>Current Budget Scenario - Sections Selected for Treatment</i>	

Background

Capitol Asset & Pavement Services, Inc. was contracted by the City of West Linn Public Works to perform a complete inspection of all of the city maintained streets in the City of West Linn over three years. All 100.8 centerline miles of streets were evaluated in accordance with MTC standards, half in 2009, the other half in 2011. The Streetsaver Online 9.0 database was updated with the inspection data. Pavement inspections were completed in May 2011.

Maintenance decision tree treatments and costs were reviewed and updated to reflect current pavement maintenance treatment prices. Budgetary Needs analysis was performed based on the updated inspections and treatment costs, and four budget scenarios were evaluated to compare the effects of various funding levels.

Purpose

This report is intended to assist the City of West Linn with identifying street maintenance priorities specific to the City.

The report examines the overall condition of the street network and highlights the impacts of various funding levels on the network pavement condition and deferred maintenance funding shortfalls. The Metropolitan Transportation Commission, MTC, Streetsaver Pavement Management Program (PMP) was used for this evaluation. The intent of this program is to develop a maintenance strategy that will improve the overall condition of the street network to an optimal Pavement Condition Index (PCI) in the low to mid 80's and also to maintain it at that level.

The MTC Streetsaver program maximizes the cost-effectiveness of the maintenance treatment plan by recommending a multi-year street maintenance and rehabilitation plan based on the most cost-effective repairs available. A comprehensive preventative maintenance program is a critical component of this plan, as these treatments extend the life of good pavements at a much lower cost than rehabilitation overlay or reconstruction treatments. To this end, various 'what-if' analyses (scenarios) were conducted to determine the most cost-effective plan for maintaining the City of West Linn's street network over five years and at various funding levels.

Existing Pavement Condition

The City of West Linn is responsible for the repair and maintenance of 100.76 centerline miles of streets. **The City's street network replacement value is estimated at \$81.9 million.** This represents a significant asset for City officials to manage. This asset valuation is assessed by the assumption of replacing the entire street network at today's dollars.

The average overall network Pavement Condition Index (PCI) of the City's street network is 62, which indicates that the street network is in 'Fair' condition. The Pavement Condition Index is a measurement of pavement condition that ranges from 0 to 100. A newly constructed or overlaid street would have a PCI of 100, while a failed road (requiring complete reconstruction) would have a PCI under 10. Appendix B contains a report detailing the PCI information for each street.

Table 1 details the network statistics and pavement condition by functional class.

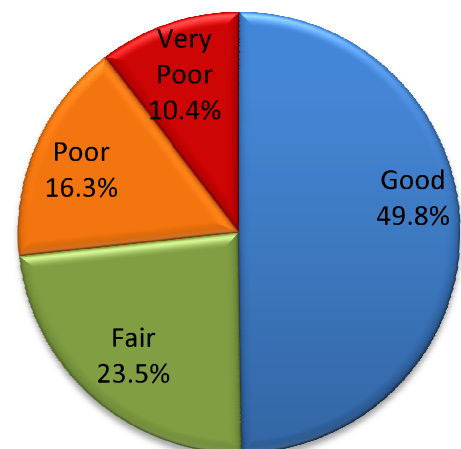
Table 1 – Street Network Statistics and Average PCI by Functional Class

Functional Class	Centerline Miles	Lane Miles	# of Sections	% of Network (by Area)	Average PCI
Arterial	15.44	31.74	52	17.3%	61
Collector	13.12	26.24	57	13.4%	55
Residential¹	72.2	143.94	554	69.3%	64
Totals	100.76	201.92	286	--	62

Table 2 details the percentage of the street network area by each PCI range or condition category.

Table 2 and Figure 1 – Percent Network Area by Functional Class and Condition Class

Condition Class	PCI Range	Arterial	Collector	Residential	Total
Good (I)	70-100	6.3%	5.3%	38.2%	49.8%
Fair (II/III)	50-69	6.6%	2.9%	14.0%	23.5%
Poor (IV)	25-49	3.2%	3.3%	9.8%	16.3%
Very Poor (V)	0-24	1.2%	1.9%	7.3%	10.4%
Totals		17.3%	13.4%	69.3%	



¹ Residential Streets include sections marked both Residential/Local and Other

Present Cost to Repair the Street Network

The MTC Pavement Management Program (PMP) is designed to achieve an optimal network PCI somewhere between the low and mid 80's, which is in the middle of the good condition category. In other words, the system will recommend maintenance treatments in an attempt to bring all of the streets in the City of West Linn to a 'good' condition, with the majority of the streets falling in the low to mid 80's PCI range. Streets with a PCI in the 80's (as opposed to 70's) will likely remain in the 'good' condition category for a longer period of time if relatively inexpensive preventive maintenance treatments are used. Once the PCI falls below 70, more expensive rehabilitation treatments will be needed.

The Budget Needs module of the PMP estimates a necessary funding level for the City's Pavement Preservation and Rehabilitation Program of \$18.7 million over the next five-year period in order to improve and maintain the street network PCI at an optimal level in the lower to mid 80's. Of this total, approximately \$11.0 million is needed in the first year alone. These costs exceed the City of West Linn's planned funding level by approximately \$18.4 million.

As mentioned earlier, the average PCI for the City of West Linn streets is 62, which is in the 'Fair' condition category. Why then, does it cost so much to repair the City of West Linn's streets, and why bother improving them?

First, the cost to repair and maintain a pavement depends on its current PCI. In the 'Good' category, it costs very little to apply preventive maintenance treatments such as crack and surface seals, which can extend the life of a pavement by correcting minor faults and reducing further deterioration. Minor treatments are applied before pavement deterioration has become severe and usually cost less than \$2.00/sq. yd. One-half (49.8%) of the City of West Linn's street network would benefit from these relatively inexpensive, life-extending treatments.

Approximately one-quarter (23.5%) of the City of West Linn's street network falls into the 'Fair' condition category. Pavements in this range show some form of distress caused by traffic load related activity or environmental distress that requires more than a life-extending treatment. At this point, a well-designed pavement will have served at least 75 percent of its life with the quality of the pavement dropping approximately 40 percent. The street surface may require a slurry seal application or a thin overlay. These treatments typically range in cost from \$2.00 to \$10.00/sq. yd.

The remaining 26.7 percent of the City of West Linn street network falls into the 'Poor' to 'Very Poor' Condition Categories. These pavements are near the end of their service lives and often exhibit major forms of distress such as potholes, extensive cracking, etc. At this stage, a street usually requires either a thick overlay or reconstruction. The costs for these treatments range from \$14.00 to \$100.00/sq. yd.

One of the key elements of a pavement repair strategy is to keep streets that are in the 'Good' or 'Fair' categories from deteriorating. This is particularly true for streets in the 'Fair' range, because they are at the point where pavement deterioration accelerates if left untreated. However, the deterioration rate for pavements in the 'Poor' to 'Very Poor' range is relatively flat and the condition of these streets will not decline significantly if repairs are delayed. As more 'Good' and 'Fair' streets deteriorate into the 'Poor' and 'Very Poor' categories, the cost of

deferred maintenance will continue to increase. The cost of the deferred maintenance backlog will stop increasing only when enough funds are provided to prevent streets from deteriorating into a worse condition category, or the whole network falls into the ‘Very Poor’ category (i.e. can not deteriorate any further).

Future Expenditures for Pavement Maintenance

Assuming historic funding is allocated for pavement maintenance, we anticipate that the City of West Linn will spend \$300,000 on pavement maintenance rehabilitation during the next five years (Fiscal year (FY) 2010-11 through FY 2015-16).

Table 3. Projected Pavement Budget for FY 2011-12 to FY 2015-16

2011-12	2012-13	2013-14	2014-15	2015-16	Total
\$60,000	\$60,000	\$60,000	\$60,000	\$60,000	\$300,000

Budget Needs

Based on the principle that it costs less to maintain streets in good condition than bad, the MTC PMP strives to develop a maintenance strategy that will first improve the overall condition of the network to an optimal PCI somewhere between the low and mid 80’s, and then sustain it at that level. The average PCI for the City of West Linn is 62, which is in the ‘Fair’ condition category, and a significant area of the network suffers from load-related distress. In addition, current funding strategies demonstrate there is a \$10.9 million deferred maintenance backlog in the first year of the scenario. If these issues are not addressed, the quality of the street network will inevitably decline. In order to correct these deficiencies, a cost-effective funding and maintenance and rehabilitation strategy must be implemented.

The first step in developing a cost-effective maintenance and rehabilitation strategy is to determine, assuming unlimited revenues, the maintenance “needs” of the City of West Linn street network. Using the PMP Budget Needs module; street maintenance needs are estimated at \$18.7 million over the next five years. If the City follows the strategy recommended by the program, the average network PCI will increase to 81. If, however, current pavement maintenance funding is exhausted and little or no maintenance is applied over the next five years, already distressed streets will continue to deteriorate, and the network PCI will drop to 54. The results of the Budget Needs analysis are summarized in Table 4.²

Table 4. Summary of Results from Needs Analysis

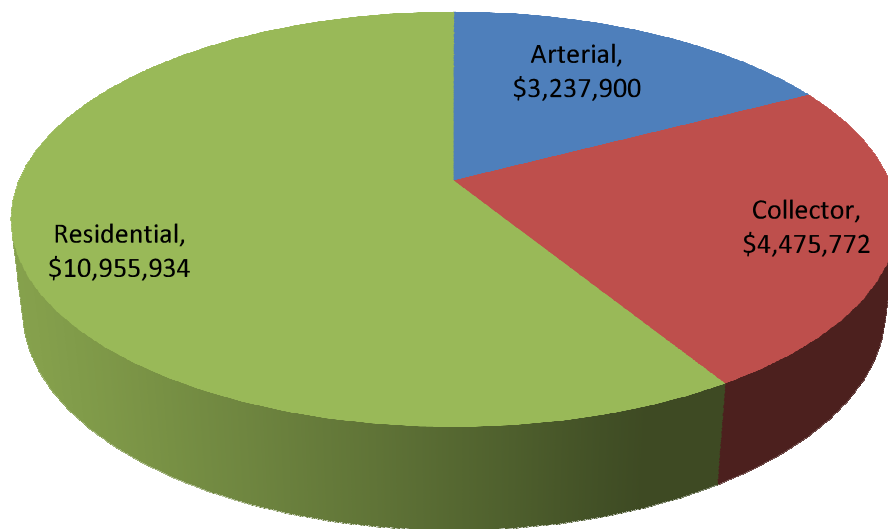
<i>Fiscal Years</i>	2010-11	2011-12	2012-13	2013-14	2014-15	Total
PCI with Treatment	79	79	79	79	81	---
PCI, no Treatment	63	61	59	56	54	---
Budget Needs	\$10,956,844	\$1,526,909	\$1,686,030	\$2,525,523	\$2,014,314	\$18,709,620
Preventative Maintenance	\$621,672	\$47,701	\$5,560	\$4,802	\$216,552	\$896,287
Rehabilitation	\$10,335,171	\$1,479,206	\$1,680,469	\$2,520,720	\$1,797,762	\$17,813,328

² Actual program outputs are included in Appendixes B through F

Table 4 shows the level of expenditure required to raise the City of West Linn’s pavement condition to an optimal network PCI of 81 and eliminate the current maintenance and rehabilitation backlog. The results of the Budget Needs analysis represent the ideal funding strategy recommended by the MTC PMP. Of the \$18.7 million in maintenance and rehabilitation needs shown, approximately \$896,000 (4.8%) is earmarked for preventive maintenance or life-extending treatments, while \$17.8 million (95.2%) is allocated for the more costly rehabilitation and reconstruction treatments.

Figure 3 is based on the Budget Needs Predictive Module. The Pavement Management Program is recommending a funding level of \$18.7 million over a five-year period. Figure 3 illustrates the funding distribution by street functional classification.

Figure 2. Budget Needs Funding Distribution by Functional Classification



Budget Scenarios

Having determined the maintenance and rehabilitation needs of the City of West Linn's street network, the next step in developing a cost-effective maintenance and rehabilitation strategy is to conduct 'what-if' analyses. Using the PMP budget scenarios module, the impact of various budget scenarios can be evaluated. The program projects the effects of the different scenarios on pavement condition PCI and deferred maintenance (backlog). By examining the effects on these indicators, the advantages and disadvantages of different funding levels and maintenance strategies become clear. For the purpose of this report, the following scenarios were run for a five (5)-year period.

1. *Unconstrained (zero "deferred" maintenance)* — The annual amounts, as identified in the Budget Needs analysis totaling \$18.7 million, were input into the Budget Scenarios module. This scenario shows the effects of implementing the ideal investment strategy (as recommended by the MTC PMP Needs module). Because it is more cost-effective to eliminate the deferred maintenance backlog as quickly as possible, the bulk of the maintenance needs are addressed in the first year of the five-year program raising the PCI to 79. The preventive maintenance split for each year in the analysis period, as recommended by the Budget Needs module, was used.
2. *Current Investment Level* — An annual budget of \$60,000 was evaluated over five years, for a total of \$300,000, to determine the effects of continuing pavement maintenance at the current budget level.
3. *Maintain Current PCI* — An annual funding level of \$500,000 per year, for a five year total of \$2.5 million, was evaluated to determine the effects at this investment level. A 10% preventive maintenance split was used for the purpose of this analysis. This funding level sustains the current PCI of 62 over the duration of the five-year analysis period.
4. *Increase Current PCI 5 points* — An investment level of \$1.1 million in each year, for a total of \$5.5 million over five years, was evaluated. This funding level increases the PCI by 5 points, to 67, by the end of the fifth year. A 10% preventive maintenance split was used for the purpose of this analysis.

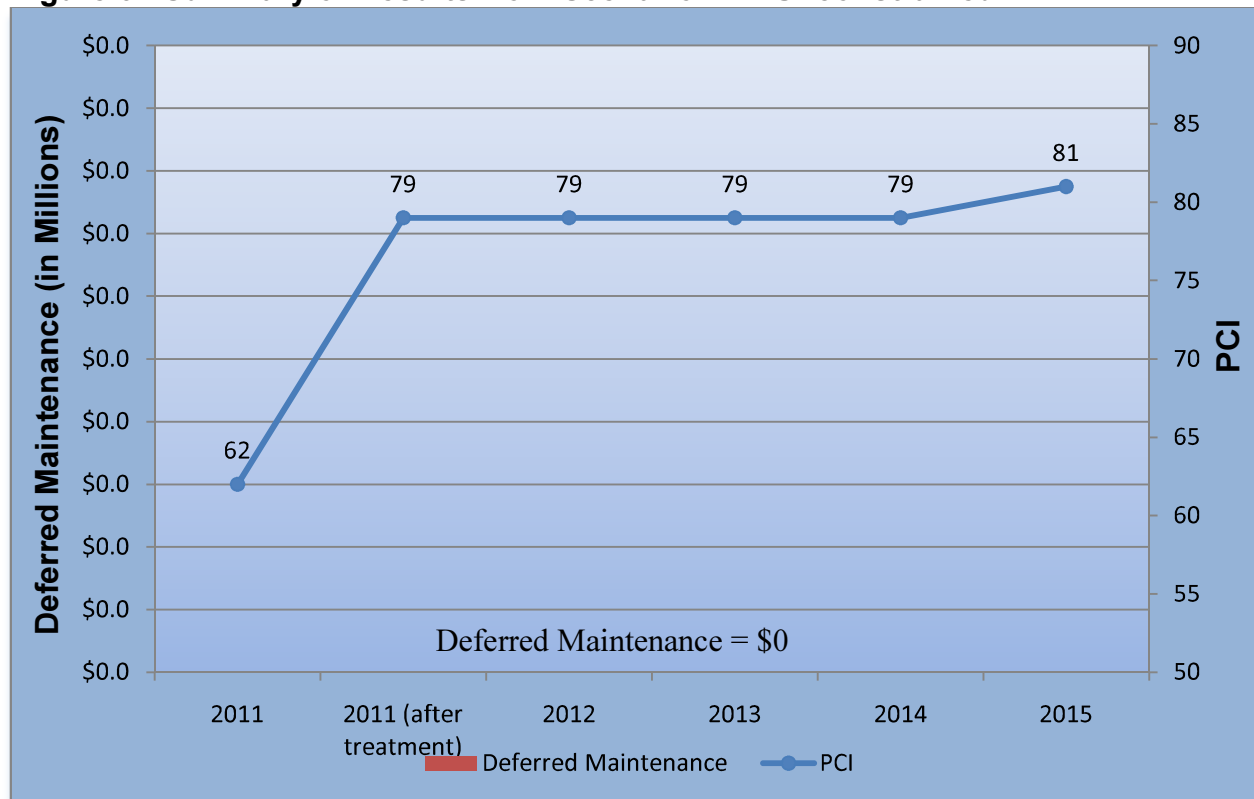
Scenario 1 — Unconstrained (zero deferred maintenance)

This scenario shows the effects of implementing the ideal investment strategy (as recommended by the MTC PMP Needs module). Because it is more cost-effective to eliminate the deferred maintenance backlog as quickly as possible, the bulk of the maintenance needs are addressed in the first year of the five-year program, raising the PCI to 79. The PCI remains at an optimal level over the entire time period, reaching 81 by 2015. By 2015, 89.1% of the network will be in the ‘Good’ condition category, a significant increase from the current level of 49.8% in ‘Good’ condition. These results are shown in both Table 5 and Figure 3.

Table 5. Summary of Results from Scenario 1 — Unconstrained

	2011	2012	2013	2014	2015	Total
Budget	\$10,956,844	\$1,526,909	\$1,686,030	\$2,525,523	\$2,014,314	\$18,709,620
Rehabilitation	\$10,335,171	\$1,479,206	\$1,680,469	\$2,520,720	\$1,797,762	\$17,813,328
Preventative Maintenance	\$621,672	\$47,701	\$5,560	\$4,802	\$216,552	\$896,287
Deferred Maintenance	\$0	\$0	\$0	\$0	\$0	---
PCI	79	79	79	79	81	

Figure 3. Summary of Results from Scenario 1 — Unconstrained



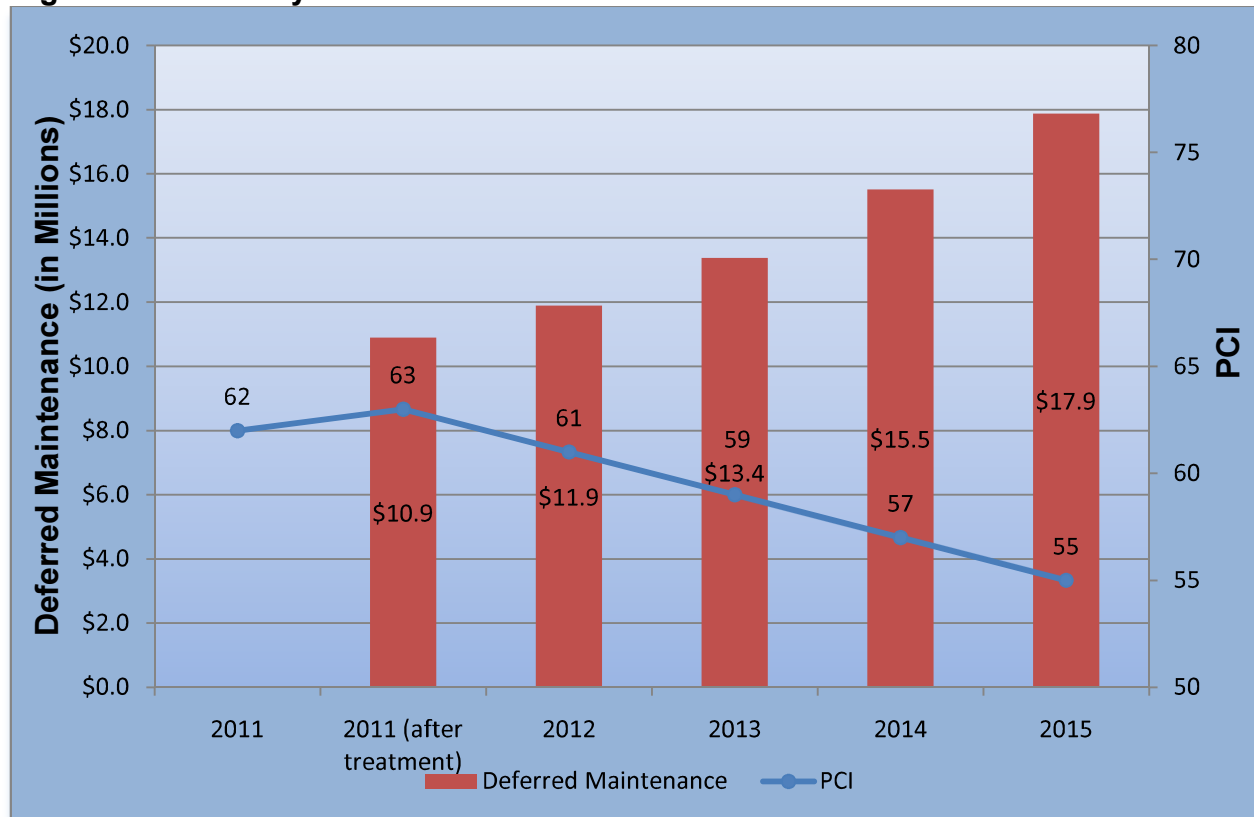
Scenario 2 — Current Investment Level

This scenario shows the effects of the City of West Linn’s current budget strategy, an investment level of \$60,000 per year starting in 2011, totaling \$300,000 over five years. The overall network PCI decreases 7 points by 2015, from 62 to 55. Under this investment level, the deferred maintenance backlog increases from \$10.9 million in 2011, to \$17.9 million in 2015. This is mainly due to the increase in the number of streets that will require a reconstruction, as the percentage of the street network in the ‘Very Poor’ condition increases from 10.4% in 2011 to 17.0% in 2015. The percentage of the street network in the ‘Good’ condition category decreases from 49.8% in 2011, to 39.9% in 2015. These results are illustrated in Table 6 and Figure 4.

Table 6. Summary of Results from Scenario 2 — Current Investment Level

	2011	2012	2013	2014	2015	Total
Budget	\$60,000	\$60,000	\$60,000	\$60,000	\$60,000	\$300,000
Rehabilitation	\$0	\$0	\$0	\$0	\$0	\$0
Preventative Maintenance	\$59,855	\$59,695	\$59,851	\$59,720	\$59,862	\$298,983
Deferred Maintenance	\$10,896,989	\$11,891,260	\$13,380,408	\$15,509,159	\$17,880,684	---
PCI	63	61	59	57	55	

Figure 4. Summary of Results from Scenario 2--Current Investment Level



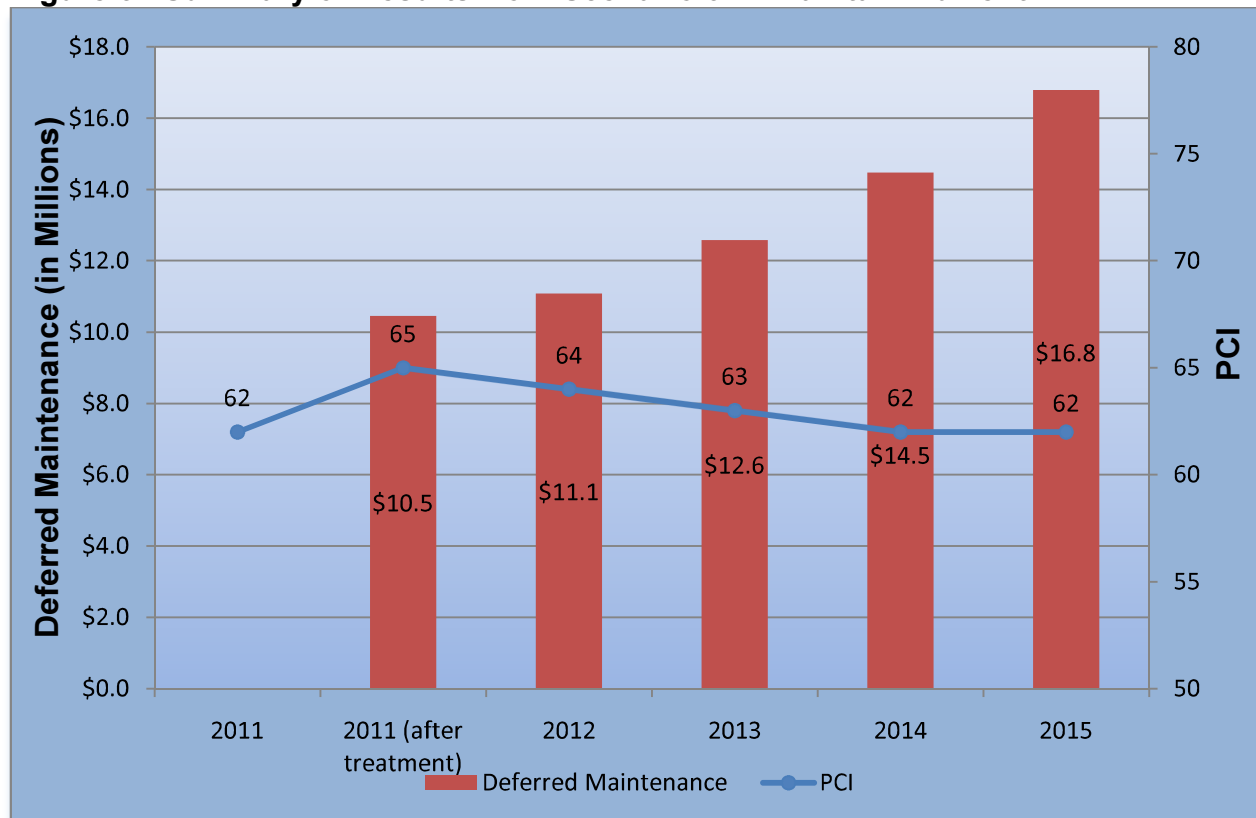
Scenario 3 — Maintain Current PCI

This scenario shows the effects an investment level of \$500,000 per year for five years, starting in 2011 and totaling \$2.5 million by 2015. This investment level maintains the street network PCI at the current level of 62 over the five year scenario. While the PCI is stabilized, the deferred maintenance backlog still increases greatly, from the current level of \$10.5 million, to \$16.8 million in 2015, mainly due to the increase of streets that will need reconstruction. The percentage of the street network in the ‘Good’ condition category increases from 49.8% in 2011, to 64.6% in 2015. However the percentage of roads in ‘Very Poor’ condition increases to 17.0% from the current level of 10.4%. These results are illustrated in Table 7 and Figure 5.

Table 7. Summary of Results, Scenario 3 — Maintain Current PCI

	2011	2012	2013	2014	2015	Total
Budget	\$500,000	\$500,000	\$500,000	\$500,000	\$500,000	\$2,500,000
Rehabilitation	\$438,947	\$440,067	\$439,685	\$445,390	\$447,284	\$2,211,373
Preventative Maintenance	\$60,876	\$59,533	\$59,897	\$54,349	\$52,439	\$287,094
Deferred Maintenance	\$10,457,021	\$11,088,851	\$12,575,259	\$14,475,141	\$16,792,041	---
PCI	65	64	63	62	62	

Figure 5. Summary of Results from Scenario 3 — Maintain Current PCI



Scenario 4 — Increase PCI by 5 points

This scenario analyses the funding level that would be required in order to increase the current PCI by 5 points over the next five years. An annual investment level of \$1.1 million, for a total of \$5.5 million over five years, would be required. Under this scenario, the PCI increases by five points, from the current level of 62, to 67 in 2015. While the PCI increases, the deferred maintenance backlog still grows from nearly \$9.9 million in 2011 to \$14.7 million in 2015. Even at this increased funding level, there is not enough to prevent the increase of streets that will be fall to ‘Very Poor’ condition. The percentage of the street network in the ‘Good’ condition category increases from 49.8% in 2011 to 72.4% in 2015. However, the percentage of roads in ‘Very Poor’ condition still increases to 15.7% from the current level of 10.4%. These results are illustrated in Table 8 and Figure 6.

Table 8. Summary of Results, Scenario 4 — Increase PCI by 5 points

	2011	2012	2013	2014	2015	Total
Budget	\$1,100,000	\$1,100,000	\$1,100,000	\$1,100,000	\$1,100,000	\$5,500,000
Rehabilitation	\$986,950	\$988,664	\$989,428	\$982,937	\$989,913	\$4,937,892
Preventative Maintenance	\$112,819	\$110,954	\$110,246	\$117,050	\$109,961	\$561,030
Deferred Maintenance	\$9,857,075	\$10,354,588	\$11,251,581	\$13,004,359	\$14,685,338	---
PCI	62	67	67	67	67	

Figure 6. Summary of Results, Scenario 4 — Increase PCI by 5 points



Figure 7. Comparison of the Four Scenarios

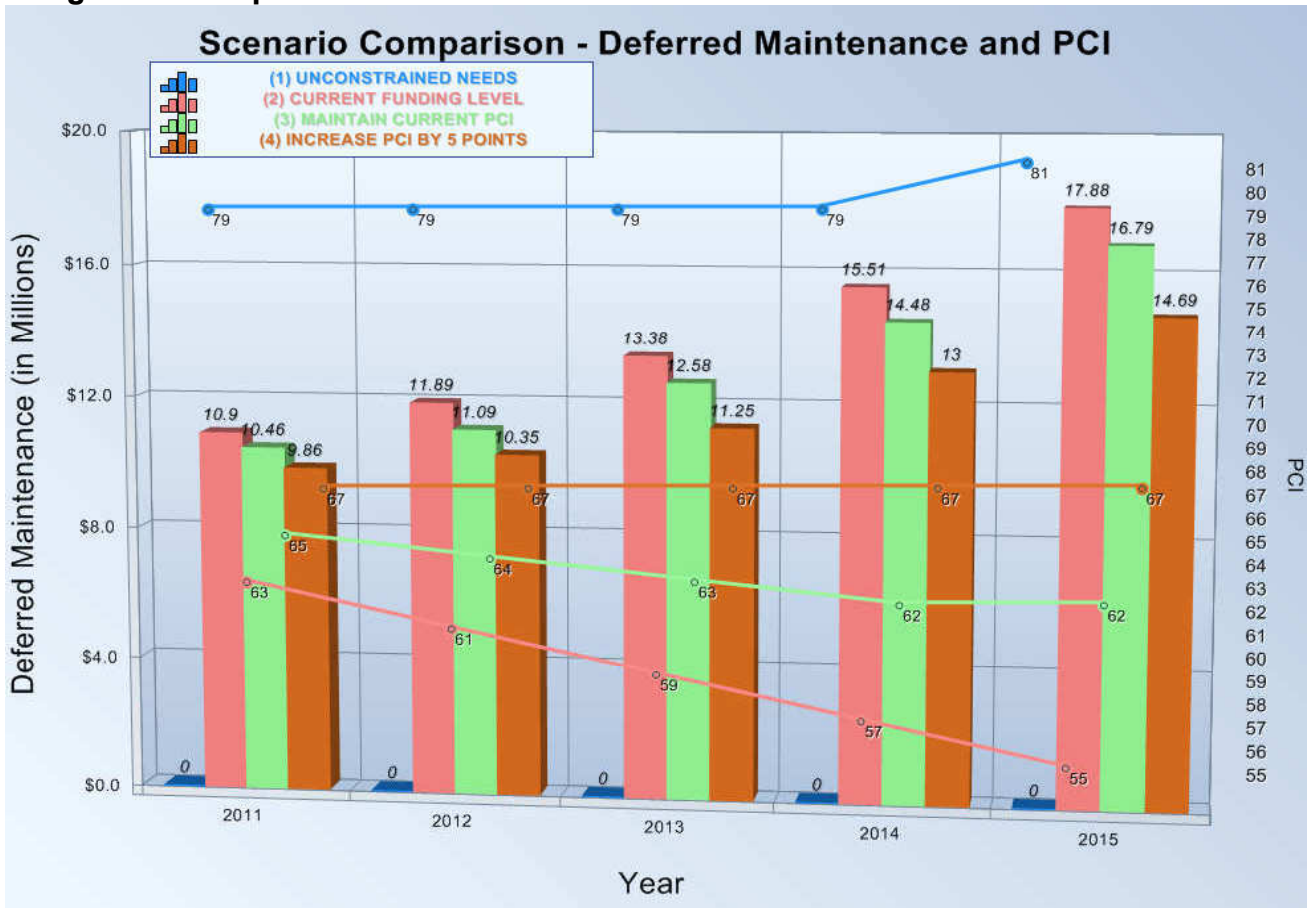
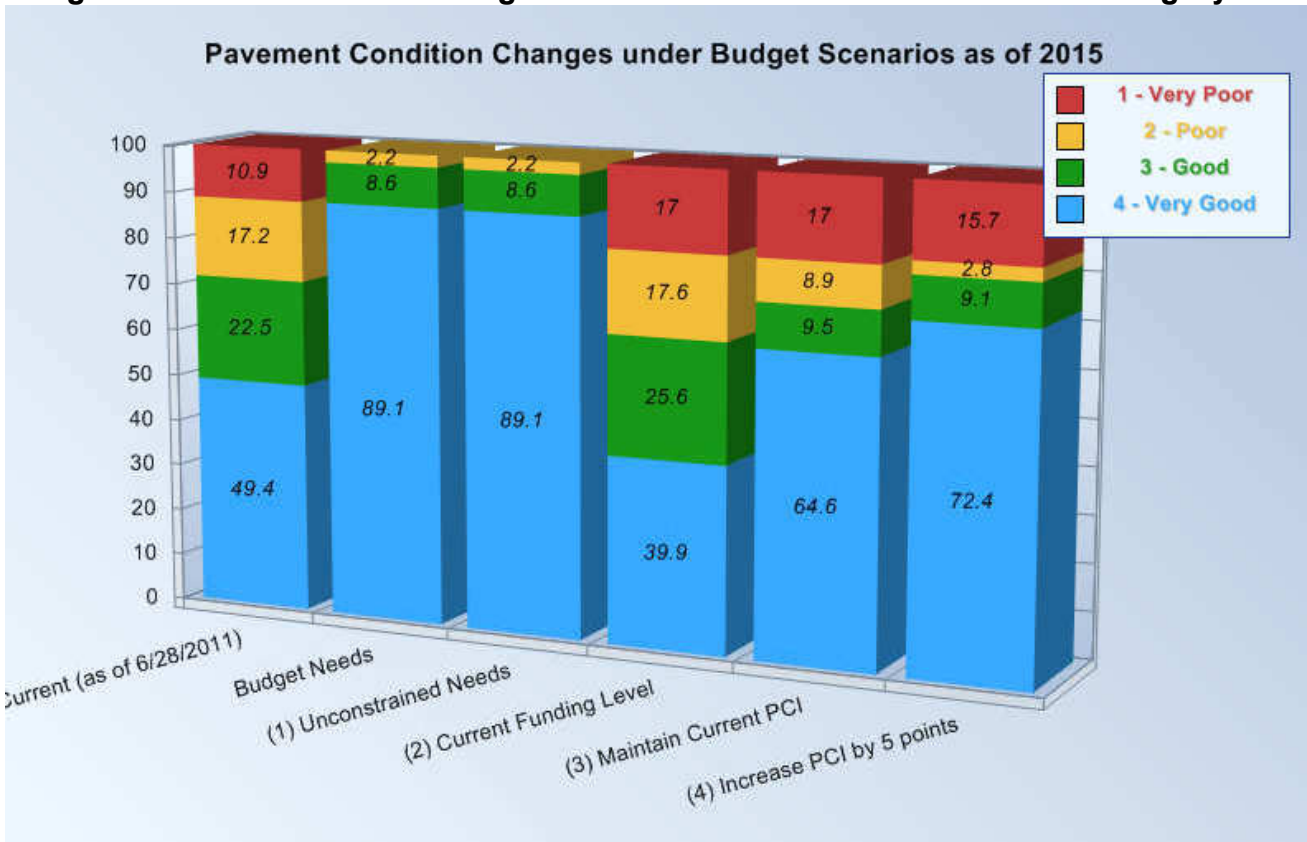


Figure 8. Scenarios - Percentage of Street network in each Condition Category



Recommendations

Of the various maintenance and funding options considered, the *ideal* strategy for the City of West Linn is presented in Scenario 1, with a five-year expenditure total of \$18.7 million. Not only does this surface management plan improve the network PCI to an optimal level of 81, it also eliminates the entire deferred maintenance backlog in the first year. As examined scenarios deviate from this strategy, the cost to West Linn will increase in the long term. However, the amount of funds in the first year of expenditure, approximately \$11.0 million, may make this strategy unrealistic for the City of West Linn. This scenario can, however, be used as a base line for comparing other scenarios.

The current five-year funding level totaling \$300,000 (Scenario 2) will result in the current overall average network PCI of 62 decreasing by 7 points, to an average network PCI of 55 over the course of five years. The deferred maintenance price tag will increase greatly, from \$10.9 million in 2011, to \$17.9 million in 2015. By following this strategy through 2015, 39.9% of the City's street will be in the 'Good' condition category, a decrease from the current level of 49.8% in 'Good' condition, and the area of the street network in 'Very Poor' condition increases, from 10.4% in 2011, to 17.0% in 2015. The City's current funding level is clearly insufficient to maintain the street network at even the current condition.

As demonstrated in the different scenarios, the City of West Linn needs to spend a significant amount of money on expensive rehabilitation and reconstruction projects. This will reduce the deferred maintenance backlog, increase the network PCI and allow money to be spent for less capital-intensive treatments such as slurry seals, crack sealing, and thin overlays in the future.

The PMP Budget Needs Module is recommending \$17.4 million for streets in the 'Poor' to 'Very Poor' condition categories requiring extensive rehabilitation and reconstruction work, representing approximately 93% of the planned costs, as estimated by the PMP. This result places the City in a challenging position of trying to avoid increasing future street rehabilitation costs coupled with the risk of a substantial increase in an already significant five year shortfall projection. This conclusion is noteworthy to the City Council. Unless funding is allocated to support an increase in the City's street rehabilitation program, the City may lose the opportunity to utilize lower cost preventative maintenance and light overlay treatment options.

The City should seek to increase funding for street maintenance. One strategy may be to implement a local fee dedicated solely to street maintenance and rehabilitation.

Preparation of a budget options report is just one step in using the MTC PMP to build an effective street maintenance program. Recommendations for further steps are:

- Link major street repairs with utility maintenance schedules to prevent damage to newly paved street surfaces.
- Obtain detailed subsurface information on selected sections before major rehabilitation projects are contracted. Costs for large rehabilitation projects are extremely variable and estimates can sometimes be reduced following project-level engineering analysis. It is possible that only a portion of a street recommended for reconstruction actually requires such heavy-duty repair.

-
- Evaluate the specific treatments and costs recommended by the PMP, and modify them to reflect the actual repairs and unit costs that are expected to be used.
 - Test other budget options with varying revenues and preventive maintenance and rehabilitation splits.
 - Prepare a brief memo to City Officials outlining the recommended five-year maintenance program. The memo should include the amount of revenues available for pavement repair, a list of streets to be repaired, and the type of repair to be completed (listed in order of year of scheduled treatment), as well as any requests for specific budgetary actions.

In addition to performing cyclic pavement condition inspections, unit cost information for the applications of various maintenance and rehabilitation treatments should be updated annually in the PMP ‘Decision Tree Module’. If this data is not kept current, the City runs the risk of understating actual funding requirements to adequately maintain the street network. A pavement inspection cycle that would allow for the inspection of Arterial and Collector streets every two years, and Residential streets every 3-4 years is recommended.

The City of West Linn has completed the foundation work necessary to execute a successful pavement management plan. Although half of the City’s streets are in ‘Good’ condition, the overall network PCI of the street system is in ‘Fair’ condition, indicating the severity of the deterioration of many streets. This is due to the fact that the City has not applied sufficient funds to maintain their large capital investment in the street system. At the current investment level, the street condition will continue to deteriorate. To improve the condition of the street system and reduce the maintenance backlog, additional revenues and support from various decision-making bodies are required.

As more ‘Good’ streets deteriorate into the ‘Poor’ and ‘Very Poor’ categories, the cost of deferred maintenance will continue to increase. The cost of the deferred maintenance backlog will stop increasing only when enough funds are provided to prevent streets from deteriorating into a worse condition category, or when the whole network falls into the “Very Poor” category (i.e. can not deteriorate any further). At that time, the network would have to be replaced at a cost of \$81.9 million.

Appendix A - Definitions

The *pavement condition index*, or PCI, is a measurement of the health of the pavement network or condition and ranges from 0 to 100. A newly constructed street would have a PCI of 100, while a failed street would have a PCI of 10 or less. The PCI is calculated based on pavement distresses identified in the field.

Network is defined as a complete inventory of all streets and other pavement facilities in which the City has jurisdiction and maintenance responsibilities. To facilitate the management of streets, they are subdivided into management sections identified as a segment of street, which has the same characteristics.

Urban Arterial street system carries the major portion of trips entering and leaving the urban area, as well as the majority of through movements desiring to bypass the central City. In addition, significant intra-area-travel such as between central business districts and outlying residential areas exists.

Urban Collector Street provides land access service and traffic circulation within residential neighborhoods, commercial, and industrial areas. It differs from the arterial system in that facilities on a collector system may penetrate residential neighborhoods.

Urban Local Street system comprises all facilities not one of the higher systems. It serves primarily to provide direct access to abutting land and access to the higher systems.

Preventive Maintenance refers to repairs applied while the pavement is in “good” condition. Such repairs extend the life of the pavement at relatively low costs, and prevent the pavement from deteriorating into conditions requiring more expensive treatments. Preventive maintenance treatments include slurry seals, crack sealing, and deep patching. Treatments of this sort are applied before pavement deterioration has become severe and usually cost less than \$2.00/sq. yd.

Deferred Maintenance refers to the dollar amount of maintenance and rehabilitation work that should have been completed to maintain the street in “good” condition, but had to be deferred due to funding deficiencies for preventative maintenance and/or pavement rehabilitation programs. The actual repairs that are being deferred are often referred to as a “backlog.”

Stop Gap refers to the dollar amount of repairs applied to maintain the pavement in a serviceable condition (e.g. pothole patching). These repairs are a temporary measure to stop resident complaints, and do not extend the pavement life. Stopgap repairs are directly proportional to the amount of deferred maintenance. Money spent on stopgap repairs are often taken from preventive maintenance budgets

Appendix B

Network Summary Statistics

Network Replacement Cost

	<u>Total Sections</u>	<u>Total Center Miles</u>	<u>Total Lane Miles</u>	<u>PCI</u>
Arterial	52	15.44	31.74	61
Collector	57	13.12	26.24	55
Other	86	17.66	35.31	59
Residential/Local	468	54.54	108.63	65
Total	663	100.76	201.92	

Overall Network PCI as of 6/15/2011: 62

Functional Class	Surface Type	Lane Miles	Unit Cost/ Square Foot	Pavement Area/ Square Feet	Cost To Replace (in thousands)
Arterial	AC	14.5	\$6.4	1,378,081	\$8,766
	AC/AC	12.3	\$6.4	950,608	\$6,047
	AC/PCC	4.9	\$6.4	313,672	\$1,995
Collector	AC	19.2	\$6.0	1,533,871	\$9,263
	AC/AC	7.0	\$6.0	514,415	\$3,106
	AC/PCC	0.1	\$6.0	6,490	\$39
Other	AC	30.4	\$5.0	2,203,952	\$10,951
	AC/AC	4.9	\$5.0	320,652	\$1,593
Residential/Local	AC	97.5	\$5.0	7,309,260	\$36,318
	AC/AC	11.1	\$5.0	770,392	\$3,828
Grand Total:		201.9		15,301,393	\$81,907

Appendix C

Needs Analysis Reports

Needs - Projected PCI/Cost Summary

Inflation Rate = 3.00 % Printed: 06/15/2011

<u>Year</u>	<u>PCI Treated</u>	<u>PCI Untreated</u>	<u>Cost</u>
2011	79	63	\$10,956,843
2012	79	61	\$1,526,908
2013	79	59	\$1,686,029
2014	79	56	\$2,525,522
2015	81	54	\$2,014,313
PM Cost		\$896,287	Total Cost
% PM		4.79%	\$18,709,615

Needs - Preventive Maintenance Treatment/Cost Summary

Inflation Rate = 3.00 % Printed: 06/15/2011

<u>Treatment</u>	<u>Year</u>	<u>Area Treated</u>	<u>Cost</u>
SLURRY SEAL			
	2011	518,059.89 sq.yd.	\$621,672
	2012	38,593.33 sq.yd.	\$47,701
	2013	4,367.56 sq.yd.	\$5,560
	2014	3,662.22 sq.yd.	\$4,802
	2015	160,336.22 sq.yd.	\$216,552
	Total	725,019.22	\$896,287
	Total Quantity	725,019.22	\$896,287

Needs - Rehabilitation Treatment/Cost Summary

Inflation Rate = 3.00 % Printed: 06/15/2011

<u>Treatment</u>	<u>Year</u>	<u>Area Treated</u>	<u>Cost</u>
RECONSTRUCT STRUCTURE (AC)	2011	53,090 sq.yd.	\$2,943,461
	2012	6,654 sq.yd.	\$372,494
	2013	17,762.67 sq.yd.	\$1,048,680
	2014	9,721.56 sq.yd.	\$577,360
	2015	1,706.67 sq.yd.	\$109,970
	Total	88,934.89 sq.yd.	\$5,051,966
1.5 IN OVERLAY W/ LEVELING	2011	33,032.22 sq.yd.	\$231,226
	2012	2,928.44 sq.yd.	\$21,114
	2013	3,560.78 sq.yd.	\$26,443
	2014	1,832.78 sq.yd.	\$14,019
	2015	19,799.11 sq.yd.	\$155,989
	Total	61,153.33 sq.yd.	\$448,791
2 IN OVERLAY W/ LEVELING	2011	26,362.78 sq.yd.	\$263,628
	2012	2,916.11 sq.yd.	\$30,036
	2014	6,897.56 sq.yd.	\$75,371
	2015	10,518.56 sq.yd.	\$118,387
	Total	46,695 sq.yd.	\$487,422
2.5 IN OVERLAY W/ LEVELING	2011	29,879.67 sq.yd.	\$419,809
	2012	19,997.78 sq.yd.	\$289,398
	2013	8,517.33 sq.yd.	\$126,956
	2014	15,691.33 sq.yd.	\$240,906
	Total	74,086.11 sq.yd.	\$1,077,070
3 IN OVERLAY W/ LEVELING	2011	44,830 sq.yd.	\$712,797
	2012	6,465.33 sq.yd.	\$105,883
	2013	12,420.44 sq.yd.	\$209,512
	2014	1,820 sq.yd.	\$31,621
	2015	19,736.89 sq.yd.	\$353,203
	Total	85,272.67 sq.yd.	\$1,413,016
RECONSTRUCT SURFACE (AC)	2011	124,251.56 sq.yd.	\$5,556,530
	2012	13,493.33 sq.yd.	\$621,525
	2013	4,363.56 sq.yd.	\$207,022
	2014	31,323.33 sq.yd.	\$1,530,670
	2015	20,544.56 sq.yd.	\$1,034,064
	Total	193,976.33 sq.yd.	\$8,949,810
SLURRY SEAL	2011	173,100.89 sq.yd.	\$207,721
	2012	31,356.78 sq.yd.	\$38,757
	2013	48,586.78 sq.yd.	\$61,855
	2014	38,719.44 sq.yd.	\$50,772
	2015	19,360.67 sq.yd.	\$26,149

Needs - Rehabilitation Treatment/Cost Summary

Inflation Rate = 3.00 % Printed: 06/15/2011

<u>Treatment</u>	<u>Year</u>	<u>Area Treated</u>	<u>Cost</u>
	Total	311,124.56 sq.yd.	\$385,253

	Total Cost	\$17,813,328
--	-------------------	--------------

Appendix D

Scenario Analysis Reports

Scenarios - Network Condition Summary

Interest: 3%

Inflation: 3%

Printed: 06/15/2011

Scenario: (1) Unconstrained Needs

Year	Budget	PM Amt	Year	Budget	PM Amt	Year	Budget	PM Amt
2011	\$10,956,844	0%	2012	\$1,526,909	0%	2013	\$1,686,030	0%
2014	\$2,525,523	0%	2015	\$2,014,314	0%			

Projected Network Average PCI by year

Year	Never Treated	With Selected Treatment
2011	63	79
2012	61	79
2013	59	79
2014	56	79
2015	54	81

Percent Network Area by Functional Classification and Condition Class Condition in base year 2011, prior to applying treatments.

Condition Class	Arterial	Collector	Res/Loc	Other	Total
I	6.3%	5.3%	31.8%	6.4%	49.8%
II / III	6.6%	2.9%	9.4%	4.6%	23.5%
IV	3.2%	3.3%	5.9%	3.9%	16.3%
V	1.2%	1.9%	5.7%	1.6%	10.4%
Total	17.3%	13.4%	52.8%	16.5%	100.0%

Percent Network Area by Functional Classification and Condition Class Condition in year 2011 after schedulable treatments applied.

Condition Class	Arterial	Collector	Res/Loc	Other	Total
I	10.1%	9.0%	46.4%	12.7%	78.3%
II / III	6.6%	2.9%	2.5%	1.4%	13.3%
IV	0.6%	1.5%	3.9%	2.4%	8.4%
Total	17.3%	13.4%	52.8%	16.5%	100.0%

Percent Network Area by Functional Classification and Condition Class Condition in year 2015 after schedulable treatments applied.

Condition Class	Arterial	Collector	Res/Loc	Other	Total
I	10.7%	12.3%	50.6%	15.6%	89.1%
II / III	6.6%	1.1%	0.8%	0.2%	8.6%
IV	0.0%	0.0%	1.4%	0.8%	2.2%
Total	17.3%	13.4%	52.8%	16.5%	100.0%

Scenarios - Cost Summary

Interest: 3.00%

Inflation: 3.00%

Printed: 06/15/2011

Scenario: (1) Unconstrained Needs

Year	PM Amt	Budget	Rehabilitation	Preventative Maintenance	Surplus PM	Deferred	Stop Gap		
2011	0%	\$10,956,844	II	\$172,829	Non-Project	\$621,672	\$0	Funded	\$0
			III	\$34,892					
			IV	\$1,627,460					
			V	\$8,499,991					
			Total	\$10,335,171					
Project	\$0						Unmet	\$0	
2012	0%	\$1,526,909	II	\$34,863	Non-Project	\$47,701	\$0	Funded	\$0
			III	\$3,894					
			IV	\$446,431					
			V	\$994,019					
			Total	\$1,479,206					
Project	\$0						Unmet	\$0	
2013	0%	\$1,686,030	II	\$56,498	Non-Project	\$5,560	\$0	Funded	\$0
			III	\$5,357					
			IV	\$362,912					
			V	\$1,255,702					
			Total	\$1,680,469					
Project	\$0						Unmet	\$0	
2014	0%	\$2,525,523	II	\$40,054	Non-Project	\$4,802	\$0	Funded	\$0
			III	\$10,718					
			IV	\$361,918					
			V	\$2,108,030					
			Total	\$2,520,720					
Project	\$0						Unmet	\$0	
2015	0%	\$2,014,314	II	\$18,502	Non-Project	\$216,552	\$0	Funded	\$0
			III	\$7,647					
			IV	\$627,579					
			V	\$1,144,034					
			Total	\$1,797,762					
Project	\$0						Unmet	\$0	

Summary				
Functional Class	Rehabilitation	Prev. Maint.	Funded Stop Gap	Unmet Stop Gap
Arterial	\$3,151,769	\$86,131	\$0	\$0
Collector	\$4,390,282	\$85,490	\$0	\$0
Other	\$3,159,990	\$125,637	\$0	\$0
Residential/Local	\$7,111,287	\$599,029	\$0	\$0
Grand Total:	\$17,813,328	\$896,287	\$0	\$0

Scenarios - Network Condition Summary

Interest: 3%

Inflation: 3%

Printed: 06/15/2011

Scenario: (2) Current Funding Level

Year	Budget	PM Amt	Year	Budget	PM Amt	Year	Budget	PM Amt
2011	\$150,000	50%	2012	\$150,000	50%	2013	\$150,000	50%
2014	\$150,000	50%	2015	\$150,000	50%			

Projected Network Average PCI by year

Year	Never Treated	With Selected Treatment
2011	63	64
2012	61	62
2013	59	60
2014	56	59
2015	54	57

Percent Network Area by Functional Classification and Condition Class Condition in base year 2011, prior to applying treatments.

Condition Class	Arterial	Collector	Res/Loc	Other	Total
I	6.3%	5.3%	31.8%	6.4%	49.8%
II / III	6.6%	2.9%	9.4%	4.6%	23.5%
IV	3.2%	3.3%	5.9%	3.9%	16.3%
V	1.2%	1.9%	5.7%	1.6%	10.4%
Total	17.3%	13.4%	52.8%	16.5%	100.0%

Percent Network Area by Functional Classification and Condition Class Condition in year 2011 after schedulable treatments applied.

Condition Class	Arterial	Collector	Res/Loc	Other	Total
I	6.3%	5.3%	33.9%	7.9%	53.4%
II / III	6.6%	2.9%	7.3%	3.0%	19.8%
IV	3.2%	3.3%	5.9%	3.9%	16.3%
V	1.2%	1.9%	5.7%	1.6%	10.4%
Total	17.3%	13.4%	52.8%	16.5%	100.0%

Percent Network Area by Functional Classification and Condition Class Condition in year 2015 after schedulable treatments applied.

Condition Class	Arterial	Collector	Res/Loc	Other	Total
I	3.9%	4.0%	37.2%	9.1%	54.3%
II / III	6.6%	1.6%	2.6%	0.6%	11.3%
IV	5.0%	4.0%	4.9%	3.5%	17.4%
V	1.7%	3.8%	8.2%	3.2%	17.0%
Total	17.3%	13.4%	52.8%	16.5%	100.0%

Scenarios - Cost Summary

Interest: 3.00%

Inflation: 3.00%

Printed: 06/15/2011

Scenario: (2) Current Funding Level

Year	PM Amt	Budget	Rehabilitation	Preventative Maintenance	Surplus PM	Deferred	Stop Gap			
2011	50%	\$150,000	II	\$54,498	Non-Project	\$74,978	\$22	\$10,806,895	Funded	\$0
			III	\$20,472						
			IV	\$0						
			V	\$0						
			Total	\$74,970						
			Project	\$0						
2012	50%	\$150,000	II	\$65,014	Non-Project	\$74,905	\$95	\$11,708,346	Funded	\$0
			III	\$9,894						
			IV	\$0						
			V	\$0						
			Total	\$74,908						
			Project	\$0						
2013	50%	\$150,000	II	\$66,904	Non-Project	\$75,128	\$0	\$13,105,844	Funded	\$0
			III	\$7,867						
			IV	\$0						
			V	\$0						
			Total	\$74,771						
			Project	\$0						
2014	50%	\$150,000	II	\$49,230	Non-Project	\$77,761	\$0	\$15,206,519	Funded	\$0
			III	\$16,786						
			IV	\$6,170						
			V	\$0						
			Total	\$72,187						
			Project	\$0						
2015	50%	\$150,000	II	\$48,541	Non-Project	\$77,880	\$0	\$17,548,445	Funded	\$0
			III	\$7,647						
			IV	\$15,908						
			V	\$0						
			Total	\$72,095						
			Project	\$0						

Summary				
Functional Class	Rehabilitation	Prev. Maint.	Funded Stop Gap	Unmet Stop Gap
Arterial	\$0	\$87,359	\$0	\$41,463
Collector	\$0	\$36,962	\$0	\$62,881
Other	\$103,367	\$23,017	\$0	\$58,772
Residential/Local	\$265,564	\$233,314	\$0	\$136,797
Grand Total:	\$368,931	\$380,652	\$0	\$299,914

Scenarios - Network Condition Summary

Interest: 3%

Inflation: 3%

Printed: 06/15/2011

Scenario: (3) Maintain Current PCI

Year	Budget	PM Amt	Year	Budget	PM Amt	Year	Budget	PM Amt
2011	\$500,000	10%	2012	\$500,000	10%	2013	\$500,000	10%
2014	\$500,000	10%	2015	\$500,000	10%			

Projected Network Average PCI by year

Year	Never Treated	With Selected Treatment
2011	63	65
2012	61	64
2013	59	63
2014	56	62
2015	54	62

Percent Network Area by Functional Classification and Condition Class Condition in base year 2011, prior to applying treatments.

Condition Class	Arterial	Collector	Res/Loc	Other	Total
I	6.3%	5.3%	31.8%	6.4%	49.8%
II / III	6.6%	2.9%	9.4%	4.6%	23.5%
IV	3.2%	3.3%	5.9%	3.9%	16.3%
V	1.2%	1.9%	5.7%	1.6%	10.4%
Total	17.3%	13.4%	52.8%	16.5%	100.0%

Percent Network Area by Functional Classification and Condition Class Condition in year 2011 after schedulable treatments applied.

Condition Class	Arterial	Collector	Res/Loc	Other	Total
I	6.3%	5.3%	40.7%	9.6%	61.9%
II / III	6.6%	2.9%	2.5%	1.4%	13.3%
IV	3.2%	3.3%	3.9%	3.9%	14.4%
V	1.2%	1.9%	5.7%	1.6%	10.4%
Total	17.3%	13.4%	52.8%	16.5%	100.0%

Percent Network Area by Functional Classification and Condition Class Condition in year 2015 after schedulable treatments applied.

Condition Class	Arterial	Collector	Res/Loc	Other	Total
I	7.3%	4.0%	42.4%	11.0%	64.6%
II / III	6.6%	1.9%	0.8%	0.2%	9.5%
IV	1.7%	3.7%	1.4%	2.1%	8.9%
V	1.7%	3.8%	8.1%	3.2%	17.0%
Total	17.3%	13.4%	52.8%	16.5%	100.0%

Scenarios - Cost Summary

Interest: 3.00%

Inflation: 3.00%

Printed: 06/15/2011

Scenario: (3) Maintain Current PCI

Year	PM Amt	Budget	Rehabilitation	Preventative Maintenance	Surplus PM	Deferred	Stop Gap							
2011	10%	\$500,000	II	\$172,829	Non-Project	\$60,876	\$0	\$10,457,021	Funded	\$0				
			III	\$34,892							Project	\$0	Unmet	\$158,541
			IV	\$231,226										
			V	\$0										
			Total	\$438,947										
Project	\$0													
2012	10%	\$500,000	II	\$34,863	Non-Project	\$59,533	\$0	\$11,088,851	Funded	\$0				
			III	\$3,894							Project	\$0	Unmet	\$22,238
			IV	\$401,310										
			V	\$0										
			Total	\$440,067										
Project	\$0													
2013	10%	\$500,000	II	\$56,498	Non-Project	\$59,897	\$0	\$12,575,259	Funded	\$0				
			III	\$5,357							Project	\$0	Unmet	\$21,543
			IV	\$377,830										
			V	\$0										
			Total	\$439,685										
Project	\$0													
2014	10%	\$500,000	II	\$63,470	Non-Project	\$54,349	\$0	\$14,475,141	Funded	\$0				
			III	\$16,786							Project	\$0	Unmet	\$38,413
			IV	\$345,153										
			V	\$19,981										
			Total	\$445,390										
Project	\$0													
2015	10%	\$500,000	II	\$50,465	Non-Project	\$52,439	\$0	\$16,792,041	Funded	\$0				
			III	\$7,647							Project	\$0	Unmet	\$23,360
			IV	\$389,172										
			V	\$0										
			Total	\$447,284										
Project	\$0													

Summary				
Functional Class	Rehabilitation	Prev. Maint.	Funded Stop Gap	Unmet Stop Gap
Arterial	\$963,313	\$74,918	\$0	\$37,011
Collector	\$75,618	\$26,535	\$0	\$62,881
Other	\$380,475	\$17,228	\$0	\$52,916
Residential/Local	\$791,967	\$168,413	\$0	\$111,287
Grand Total:	\$2,211,373	\$287,094	\$0	\$264,095

Scenarios - Network Condition Summary

Interest: 3%

Inflation: 3%

Printed: 06/15/2011

Scenario: (4) Increase PCI by 5 points

Year	Budget	PM Amt	Year	Budget	PM Amt	Year	Budget	PM Amt
2011	\$1,100,000	10%	2012	\$1,100,000	10%	2013	\$1,100,000	10%
2014	\$1,100,000	10%	2015	\$1,100,000	10%			

Projected Network Average PCI by year

Year	Never Treated	With Selected Treatment
2011	63	67
2012	61	67
2013	59	67
2014	56	67
2015	54	67

Percent Network Area by Functional Classification and Condition Class Condition in base year 2011, prior to applying treatments.

Condition Class	Arterial	Collector	Res/Loc	Other	Total
I	6.3%	5.3%	31.8%	6.4%	49.8%
II / III	6.6%	2.9%	9.4%	4.6%	23.5%
IV	3.2%	3.3%	5.9%	3.9%	16.3%
V	1.2%	1.9%	5.7%	1.6%	10.4%
Total	17.3%	13.4%	52.8%	16.5%	100.0%

Percent Network Area by Functional Classification and Condition Class Condition in year 2011 after schedulable treatments applied.

Condition Class	Arterial	Collector	Res/Loc	Other	Total
I	7.8%	5.3%	40.8%	10.4%	64.2%
II / III	6.6%	2.9%	2.5%	1.4%	13.3%
IV	1.8%	3.3%	3.9%	3.1%	12.1%
V	1.2%	1.9%	5.7%	1.6%	10.4%
Total	17.3%	13.4%	52.8%	16.5%	100.0%

Percent Network Area by Functional Classification and Condition Class Condition in year 2015 after schedulable treatments applied.

Condition Class	Arterial	Collector	Res/Loc	Other	Total
I	9.9%	7.5%	42.7%	12.4%	72.4%
II / III	6.6%	1.6%	0.8%	0.2%	9.1%
IV	0.0%	0.6%	1.4%	0.8%	2.8%
V	0.8%	3.8%	7.9%	3.2%	15.7%
Total	17.3%	13.4%	52.8%	16.5%	100.0%

Scenarios - Cost Summary

Interest: 3.00%

Inflation: 3.00%

Printed: 06/15/2011

Scenario: (4) Increase PCI by 5 points

Year	PM Amt	Budget	Rehabilitation	Preventative Maintenance	Surplus PM	Deferred	Stop Gap				
2011	10%	\$1,100,000	II	\$172,829	Non-Project	\$112,819	\$0	Funded	\$0		
			III	\$34,892						Unmet	\$150,537
			IV	\$760,943							
			V	\$18,286							
			Total	\$986,950							
Project	\$0										
2012	10%	\$1,100,000	II	\$34,863	Non-Project	\$110,954	\$0	Funded	\$0		
			III	\$3,894						Unmet	\$20,306
			IV	\$824,056							
			V	\$125,851							
			Total	\$988,664							
Project	\$0										
2013	10%	\$1,100,000	II	\$56,498	Non-Project	\$110,246	\$0	Funded	\$0		
			III	\$5,357						Unmet	\$16,576
			IV	\$660,991							
			V	\$266,582							
			Total	\$989,428							
Project	\$0										
2014	10%	\$1,100,000	II	\$52,028	Non-Project	\$117,050	\$0	Funded	\$0		
			III	\$10,718						Unmet	\$34,388
			IV	\$361,918							
			V	\$558,272							
			Total	\$982,937							
Project	\$0										
2015	10%	\$1,100,000	II	\$28,511	Non-Project	\$109,961	\$39	Funded	\$0		
			III	\$7,647						Unmet	\$18,036
			IV	\$627,579							
			V	\$326,175							
			Total	\$989,913							
Project	\$0										

Summary				
Functional Class	Rehabilitation	Prev. Maint.	Funded Stop Gap	Unmet Stop Gap
Arterial	\$2,440,126	\$87,176	\$0	\$26,226
Collector	\$872,857	\$76,796	\$0	\$57,645
Other	\$629,392	\$59,569	\$0	\$46,739
Residential/Local	\$995,516	\$337,487	\$0	\$109,234
Grand Total:	\$4,937,891	\$561,029	\$0	\$239,843

Appendix E

Section Description

Street ID	Section ID	Street Name	From	To	Length	Width	Area	Functional Class	Surface Type	Current PCI	Remaining Life
10THST	4005B	10TH STREET	LESLIE WAY	WILLAMETTE FALLS DRIVE	1,085	23	24,955	O - Other	A - AC	21	0
10THST	43	10TH STREET	WILLAMETTE FALLS DRIVE	BLANKENSHIP ROAD	1,340	43	57,620	A - Arterial	O - AC/AC	63	11.52
11THST	4006	11TH STREET	4TH AV	WILLAMETTE FALLS DRIVE	850	26	22,100	O - Other	A - AC	21	0
11THST	4006A	11TH STREET	DEAD END	50 FT N OF LESLIE WAY	281	26	7,306	R - Residential/Local	A - AC	61	14.09
11THST	4006B	11TH STREET	50 N OF LESLIE WAY	4TH AVENUE	285	18	5,130	R - Residential/Local	A - AC	62	14.3
12THST	4007	12TH STREET	WILLAMETTE FALLS DRIVE	8TH AVENUE	241	24	5,784	O - Other	A - AC	74	21.78
12THST	45A	12TH STREET	VOLPP STREET	#1201 12TH STREET	651	58	37,758	A - Arterial	A - AC	66	14.35
12THST	45B	12TH STREET	#1201 12TH STREET	TUALATIN STREET	390	27	10,530	A - Arterial	A - AC	91	25.61
12THST	45C	12TH STREET	TUALATIN AVENUE	4TH AVENUE	130	29	3,770	A - Arterial	A - AC	91	25.61
12THST	45D	12TH STREET	4TH AVENUE	WILLAMETTE FALLS DRIVE	885	57	50,445	A - Arterial	A - AC	91	25.61
13THST	3371	13TH STREET	BLANKENSHIP ROAD	CUL DE SAC	544	25	13,600	R - Residential/Local	A - AC	71	20.68
13THST	4008A	13TH STREET	TUALATIN AVENUE	6TH AVENUE	949	21	19,929	O - Other	A - AC	7	0
13THST	4008B	13TH STREET	6TH AVENUE	WILLAMETTE FALLS DRIVE	260	40	10,400	O - Other	O - AC/AC	74	26.83
13THST	4324	13TH STREET	8TH AVENUE	CUL-DE-SAC	963	25	24,075	R - Residential/Local	A - AC	11	0
14THST	4009A	14TH STREET	TUALATIN AVENUE	WILLAMETTE FALLS DRIVE	1,510	26	39,260	O - Other	A - AC	37	4.16
14THST	4009B	14TH STREET	WILLAMETTE FALLS DRIVE	8TH AVENUE	242	26	6,292	O - Other	A - AC	32	2.34
15THST	4010A	15TH STREET	5TH AVENUE	6TH AVENUE	284	25	7,100	O - Other	O - AC/AC	87	39.94
15THST	4010B	15TH STREET	6TH AVENUE	WILLAMETTE FALLS DRIVE	257	24	6,168	O - Other	O - AC/AC	87	39.94
16THST	3384	16TH STREET	BLANKENSHIP ROAD	DEAD END	95	16	1,520	R - Residential/Local	A - AC	76	27.27
16THST	4011A	16TH STREET	WILLAMETTE FALLS DRIVE	6TH AVENUE	331	34	11,254	O - Other	O - AC/AC	76	28.45
16THST	4011B	16TH STREET	WILLAMETTE FALLS DRIVE	8TH AVENUE	258	28	7,224	O - Other	A - AC	78	25.14
16THST	4011C	16TH STREET	8TH AVENUE	DOLLAR STREET	340	22	7,480	O - Other	A - AC	60	15.12
16THST	4011D	16TH STREET	DOLLAR STREET	SHORT STREET	1,378	26	35,828	O - Other	O - AC/AC	65	17.95
16THST	4354	16TH STREET	SHORT STREET	CUL-DE-SAC	369	14	5,166	R - Residential/Local	A - AC	41	6
18THST	4310	18TH STREET	NOVA COURT	CUL-DE-SAC	318	35	11,130	R - Residential/Local	A - AC	63	15.98

Street ID	Section ID	Street Name	From	To	Length	Width	Area	Functional Class	Surface Type	Current PCI	Remaining Life
19THST	4303A	19TH STREET	JOHNSON ROAD	BLANKENSHIP ROAD	1,318	35	46,130	R - Residential/Local	A - AC	7	0
19THST	4303B	19TH STREET	BLANKENSHIP ROAD	DOLLAR STREET	1,909	22	41,998	R - Residential/Local	A - AC	58	12.32
19THST	4303C	19TH STREET	DOLLAR STREET	WILLAMETTE FALLS DRIVE	936	26	24,336	R - Residential/Local	A - AC	15	0
4THAVE	4345A	4TH AVENUE	14TH STREET	12TH STREET	754	26	19,604	R - Residential/Local	A - AC	62	15.42
4THAVE	4345B	4TH AVENUE	12TH STREET	11TH STREET	289	21	6,069	R - Residential/Local	O - AC/AC	59	14.06
4THST	4001	4TH STREET	VOLPP STREET	5TH AVENUE	1,011	15	15,165	O - Other	A - AC	51	10.2
5THAVE	4002A	5TH AVENUE	15TH STREET	14TH STREET	329	28	9,212	O - Other	A - AC	84	28.86
5THAVE	4002B1	5TH AVENUE	14TH STREET	13TH STREET	347	19	6,593	O - Other	A - AC	56	12.15
5THAVE	4002B2	5TH AVENUE	13TH STREET	12TH STREET	337	34	11,458	O - Other	A - AC	77	28.55
5THAVE	4002C	5TH AVENUE	11TH STREET	6TH STREET	2,266	22	49,852	O - Other	A - AC	66	19.02
5THAVE	4002D	5TH AVENUE	6TH STREET	DEAD END (#2780 5TH AV.)	1,316	15	19,740	O - Other	A - AC	40	5.48
6THAVE	4344A	6TH AVENUE	16TH STREET	15TH STREET	324	25	8,100	R - Residential/Local	A - AC	13	0
6THAVE	4344B	6TH AVENUE	15TH STREET	13TH STREET	670	17	11,390	R - Residential/Local	O - AC/AC	83	37.67
6THAVE	4344C	6TH AVENUE	13TH STREET	11TH STREET	650	29	18,850	R - Residential/Local	A - AC	27	0.69
6THST	4355	6TH STREET	5TH AVENUE	WILLAMETTE FALLS DRIVE	492	17	8,364	R - Residential/Local	O - AC/AC	66	20.32
7THST	4342A	7TH STREET	5TH AVENUE	WILLAMETTE FALLS DRIVE	434	19	8,246	R - Residential/Local	A - AC	40	5.44
7THST	4342B	7TH STREET	5TH AVENUE	DEAD END	368	10	3,680	R - Residential/Local	A - AC	17	0
8THAVE	4013	8TH AVENUE	DEAD END @ DOLLAR ST	10TH STREET	1,723	18	31,014	O - Other	A - AC	21	0
8THAVE	4353	8TH AVENUE	DOLLAR STREET	16TH STREET	405	20	8,100	R - Residential/Local	O - AC/AC	77	33.26
8THCT	4014	8TH CT	10TH STREET	CUL DE SAC	458	28	12,824	R - Residential/Local	A - AC	63	14.73
8THST	4343	8TH STREET	5TH AVENUE	WILLAMETTE FALLS DRIVE	432	17	7,344	R - Residential/Local	A - AC	8	0
9THST	4012A	9TH STREET	VOLPP STREET	5TH AVENUE	1,535	16	24,560	O - Other	A - AC	59	14
9THST	4012B	9TH STREET	5TH AVENUE	WILLAMETTE FALLS DRIVE	434	21	9,114	O - Other	A - AC	29	1.48
ALDERC	3364	ALDER COURT	SUNSET AVENUE	DEAD END	127	28	3,556	R - Residential/Local	A - AC	59	15.02
ALDERS	3362	ALDER STREET	SOUTH OF MAPLE STREET	DEAD END (#4740 ALDER STREET)	442	21	9,282	R - Residential/Local	A - AC	81	26.69
ALICIA	4330	ALICIA COURT	RIVER HEIGHTS CIRCLE	CUL-DE-SAC	367	30	11,010	R - Residential/Local	A - AC	79	25.78
ALPINE	3407A	ALPINE DRIVE	KILLARNEY DRIVE	HOUSE #1990	694	34	23,596	R - Residential/Local	A - AC	86	29.98

Street ID	Section ID	Street Name	From	To	Length	Width	Area	Functional Class	Surface Type	Current PCI	Remaining Life
ALPINE	3407B	ALPINE DRIVE	HOUSE #1990	END OF LOOP	1,680	32	53,760	R - Residential/Local	A - AC	70	20.28
AMYST	2348	AMY STREET	MC KILLICAN STREET	CUL-DE-SAC	790	20	15,800	R - Residential/Local	A - AC	38	4.49
ANNCT	4308	ANN COURT	19TH STREET	CUL-DE-SAC	596	30	17,880	R - Residential/Local	A - AC	69	19.48
APOLLO	2410	APOLLO COURT	APOLLO ROAD	CUL-DE-SAC	148	34	5,032	R - Residential/Local	A - AC	87	30.36
APOLLO	2009	APOLLO ROAD	CUL-DE-SAC (W. END)	SUMMIT STREET	2,685	36	96,660	O - Other	A - AC	85	29.16
APOLLO	2411	APOLLO ROAD	SUMMIT STREET	DEAD END (E. END)	470	36	16,920	R - Residential/Local	A - AC	84	28.54
APPALO	2372	APPALOOSA WAY	PALOMINO WAY	SANTA ANITA DRIVE	1,235	26	32,110	R - Residential/Local	A - AC	33	2.63
APRILC	4320	APRIL COURT	16TH STREET	CUL-DE-SAC	469	34	15,946	R - Residential/Local	A - AC	63	15.98
ARBOR	1006A	ARBOR DRIVE	(UPPER) MIDHILL DRIVE	WILLAMETTE DRIVE	829	24	19,896	O - Other	A - AC	63	17.09
ARBOR	1006B	ARBOR DRIVE	WILLAMETTE DRIVE	ARBOR CT. (2993)	1,004	17	17,068	O - Other	A - AC	33	2.41
ARBOR	1006C	ARBOR DRIVE	ARBOR COURT (2993)	DEAD END (3580)	1,658	18	29,844	O - Other	A - AC	19	0
ARENA	2347	ARENA COURT	SUNCREST DRIVE	CUL-DE-SAC	238	28	6,664	R - Residential/Local	A - AC	86	29.76
ARRAN	1372	ARRAN COURT	STONEHAVEN DRIVE	CUL-DE-SAC	557	28	15,596	R - Residential/Local	A - AC	77	24.14
ARTEMI	2405	ARTEMIS COURT	ARTEMIS LANE	CUL-DE-SAC	136	37	5,032	R - Residential/Local	A - AC	86	29.76
ARTEMI	2406	ARTEMIS LANE	HORTON ROAD	ATHENA ROAD	941	36	33,876	R - Residential/Local	A - AC	80	25.99
ASCOTC	1305	ASCOT CIRCLE	BLUEGRASS WAY (N. END)	BLUEGRASS WAY (S. END)	928	30	27,840	R - Residential/Local	A - AC	85	29.16
ATHENA	2407	ATHENA ROAD	APOLLO ROAD	DEAD END	905	36	32,580	R - Residential/Local	A - AC	76	23.45
ATKISO	2330	ATKINSON STREET	HAMMERLE STREET	RANDALL STREET	446	16	7,136	R - Residential/Local	A - AC	18	0
AUTUMN	1322	AUTUMN VIEW COURT	HIDDEN SPRINGS ROAD	CUL-DE-SAC	247	36	8,892	R - Residential/Local	A - AC	82	27.27
AZTEC	1319	AZTEC COURT	SUNCREST DRIVE	CUL-DE-SAC	386	28	10,808	R - Residential/Local	A - AC	56	12.86
BARCLA	2329A	BARCLAY STREET	HAMMERLE STREET	BUCK STREET	222	39	8,658	R - Residential/Local	A - AC	59	14.74
BARCLA	2329B	BARCLAY STREET	DEAD END	TOMPKINS STREET	470	24	11,280	R - Residential/Local	A - AC	59	13.78
BARLOW	2331	BARLOW STREET	BUCK STREET	WILLAMETTE DRIVE	610	16	9,760	R - Residential/Local	A - AC	48	8.58
BARNES	3328	BARNES CIRCLE	GREENE STREET (#2100)	GREENE STREET (#2200)	1,651	36	59,436	R - Residential/Local	A - AC	78	25.14
BARRIN	3004A	BARRINGTON DRIVE	SALAMO ROAD	#3383 BARRINGTON DRIVE	908	33	29,964	O - Other	A - AC	32	2.08
BARRIN	3004B	BARRINGTON DRIVE	#3383 BARRINGTON DRIVE	BEACON HILL DRIVE	1,064	33	35,112	O - Other	A - AC	27	0.52
BAYMEA	2388	BAY MEADOW DRIVE	ROSEMONT ROAD	DEAD END	450	33	14,850	R - Residential/Local	A - AC	59	14.35
BAYMEA	1003	BAY MEADOWS DRIVE	HIDDEN SPRINGS ROAD	DERBY STREET	994	32	31,808	O - Other	A - AC	84	28.54

Printed: 06/15/2011

Street ID	Section ID	Street Name	From	To	Length	Width	Area	Functional Class	Surface Type	Current PCI	Remaining Life
BEACON	3008A	BEACON HILL DRIVE	BARRINGTON DR.	#2941 BEACON HILL DRIVE	1,788	34	60,792	O - Other	A - AC	42	5.6
BEACON	3008B	BEACON HILL DRIVE	#2941 BEACON HILL DRIVE	IMPERIAL DRIVE	372	34	12,648	O - Other	A - AC	91	32.48
BEACON	3008C	BEACON HILL DRIVE	BARRINGTON DRIVE	HOUSE # 2698	1,206	33	39,798	O - Other	A - AC	73	19.94
BEACON	3008D	BEACON HILL DRIVE	HOUSE # 2698	BEACON HILL LANE	810	22	17,820	O - Other	A - AC	85	34.92
BEACON	3008E	BEACON HILL DRIVE	BEACON HILL LN	CRESENT DR	804	29	23,316	R - Residential/Local	A - AC	77	27.62
BEACON	3812	BEACON HILL LANE	BEACON HILL DRIVE	WINKEL WAY	685	22	15,070	R - Residential/Local	A - AC	78	25.42
BEAMST	2425	BEAM STREET	DILLOW DRIVE	DEAD END	529	28	14,812	R - Residential/Local	A - AC	16	0
BELKNA	3393	BELKNAP DR.	CHELAN DR. (3410 BLK.)	CHELAN DR. (3500 BLK.)	680	30	20,400	R - Residential/Local	A - AC	87	30.36
BELLA	2343	BELLA STREET	RIVER STREET	SINCLAIR STREET	231	17	3,927	R - Residential/Local	O - AC/AC	89	35.5
BELLEV	1313	BELLEVUE COURT	BELLEVUE WAY	CUL-DE-SAC	135	28	3,780	R - Residential/Local	A - AC	79	25.41
BELLEV	1312	BELLEVUE TERRACE	CUL-DE-SAC	CUL-DE-SAC	610	29	17,690	R - Residential/Local	A - AC	80	25.99
BELLEV	1004	BELLEVUE WAY	BELLEVUE TERRACE	CUL-DE-SAC	2,205	33	72,765	O - Other	A - AC	77	24.08
BENNIN	1390A	BENNINGTON CT.	DEANA DR.	HOUSE #19737	346	29	10,034	R - Residential/Local	A - AC	86	29.76
BENNIN	1390B	BENNINGTON CT.	HOUSE #19737	CUL DE SAC (40'R)/HOUSE #19877	831	32	26,592	R - Residential/Local	A - AC	87	30.36
BEXHIL	4332	BEXHILL STREET	OSTMAN ROAD	CUL-DE-SAC	773	36	27,828	R - Residential/Local	A - AC	85	29.43
BITTNE	3351	BITTNER STREET	LONG STREEET	OXFORD STREET	640	34	21,760	R - Residential/Local	A - AC	77	24.5
BLANDC	3801A	BLAND CIRCLE	SALAMO RD	TANNLER DR	1,111	36	39,996	R - Residential/Local	A - AC	64	14.68
BLANDC	3801B	BLAND CIRCLE	TANNLER DR	SAINT MORITZ (SOUTH INT.)	825	20	16,500	R - Residential/Local	A - AC	63	13.98
BLANDC	3801C	BLAND CIRCLE	SAINT MORITZ (SOUTH INT.)	HOUSE #22995	1,414	30	42,420	R - Residential/Local	A - AC	79	27.2
BLANDC	3801D	BLAND CIRCLE	HOUSE #22995	WEATHERHILL RD	1,070	16	17,120	R - Residential/Local	A - AC	0	0
BLANDC	3801E	BLAND CIRCLE	WEATHERHILL RD	300 FT. NORTH OF DAY RD	785	30	23,550	R - Residential/Local	A - AC	71	20.17
BLANKE	36A	BLANKENSHIP ROAD	SALAMO ROAD	13TH STREET	1,220	43	52,460	A - Arterial	O - AC/AC	64	12.91
BLANKE	36B	BLANKENSHIP ROAD	13TH STREET	JOHNSON ROAD	1,776	26	46,176	A - Arterial	A - AC	10	0
BLANKE	402A	BLANKENSHIP ROAD	OSTMAN RD	350' EAST OF OSTMAN RD	350	28	9,800	C - Collector	A - AC	75	11.94
BLANKE	402B	BLANKENSHIP ROAD	350' EAST OF OSTMAN RD.	JOHNSON ROAD	890	30	26,700	C - Collector	A - AC	74	13.21
BLUEGR	1304	BLUEGRASS WAY	CARRIAGE WAY	HIDDEN SPRINGS ROAD	1,092	30	32,760	R - Residential/Local	A - AC	63	17.16

Street ID	Section ID	Street Name	From	To	Length	Width	Area	Functional Class	Surface Type	Current PCI	Remaining Life
BOLTON	2340	BOLTON STREET	WILLAMETTE DRIVE	ROBERT MOORE STREET	303	17	5,151	R - Residential/Local	O - AC/AC	47	9.36
BONNET	3381	BONNET DRIVE	OXFORD STREET	DEAD END	720	34	24,480	R - Residential/Local	A - AC	37	4.19
BRAEMA	1370	BRAEMAR COURT	STONEHAVEN DRIVE	CUL-DE-SAC	231	28	6,468	R - Residential/Local	A - AC	76	23.5
BRAEMA	1371	BRAEMAR DRIVE	TROON DRIVE	STONEHAVEN DRIVE	615	28	17,220	R - Residential/Local	A - AC	78	24.77
BRANDO	4331	BRANDON PLACE	DOLLAR STREET	CUL-DE-SAC	756	30	22,680	R - Residential/Local	A - AC	65	17.8
BRIDGE	2382	BRIDGEVIEW DRIVE	SUMMIT STREET	EVERGREEN DR	877	36	31,572	R - Residential/Local	A - AC	76	23.5
BRIDGE	2382B	BRIDGEVIEW DRIVE	EVERGREEN DR	EVERGREEN DR	628	29	18,212	R - Residential/Local	A - AC	89	41.03
BRIDLE	2403	BRIDLE WAY	TACK COURT	CUL-DE-SAC	480	26	12,480	R - Residential/Local	A - AC	71	20.38
BRISTO	4313	BRISTOL COURT	DOLLAR STREET	CUL-DE-SAC	325	36	11,700	R - Residential/Local	A - AC	83	27.96
BRITTO	4340	BRITTON STREET	WILLAMETTE FALLS DRIVE	DOLLAR STREET	792	19	15,048	R - Residential/Local	A - AC	10	0
BROADW	2006A	BROADWAY STREET	WEBB STREET	EASY STREET	1,054	22	23,188	O - Other	A - AC	72	23.76
BROADW	2006B	BROADWAY STREET	EASY STREET	WILLAMETTE FALLS DRIVE	1,489	39	58,071	O - Other	A - AC	67	19.83
BRONCO	2361	BRONCO COURT	SORREL WAY	CUL-DE-SAC	674	24	16,176	R - Residential/Local	A - AC	81	26.63
BUCKST	2002A	BUCK STREET	BARLOW STREET	WILLAMETTE DRIVE	767	21	16,107	O - Other	A - AC	24	0
BUCKST	2002B	BUCK STREET	DEAD END W. OF DAVENPORT ST	ELLIOTT STREET	440	25	11,000	O - Other	A - AC	49	9.4
BUCKST	2002C	BUCK STREET	ELLIOTT STREET	FAILING STREET	277	40	11,080	O - Other	A - AC	49	9.29
BUCKST	2002D	BUCK STREET	FAILING STREET	HOLMES STREET	510	25	12,750	O - Other	O - AC/AC	63	18.1
BUCKST	2002E	BUCK STREET	HOLMES STREET	DEAD END	543	40	21,720	O - Other	A - AC	54	11.89
BURNS	203	BURNS STREET	WILLAMETTE DRIVE	RIVER STREET	1,581	33	52,173	C - Collector	A - AC	75	15.02
BUSEST	2360A	BUSE STREET	WEST A STREET	BROADWAY STREET	239	29	3,931	R - Residential/Local	A - AC	73	24.57
BUSEST	2360B	BUSE STREET	BROADWAY STREET	AMY STREET	464	25	11,600	R - Residential/Local	A - AC	55	11.81
CALARO	1386	CALAROGA CIRCLE	CALAROGA DRIVE (4520)	CALAROGA DRIVE (4722)	1,290	18	23,220	R - Residential/Local	A - AC	32	2.21
CALARO	1347	CALAROGA COURT	CALAROGA DRIVE	DEAD END	633	18	11,394	R - Residential/Local	O - AC/AC	90	46.81
CALARO	1007	CALAROGA DRIVE	ROBINVIEW DRIVE	ELMRAN AVENUE	2,893	20	57,860	O - Other	A - AC	33	2.51
CALIEN	1309	CALIENTE COURT	DERBY STREET	CUL-DE-SAC	160	25	4,000	R - Residential/Local	A - AC	79	25.35
CAMBRI	3349	CAMBRIDGE STREET	DEAD END (#2785 CAMBRIDGE)	EXETER STREET	884	19	16,796	R - Residential/Local	A - AC	10	0
CANEMA	3355	CANEMAH STREET	KELLY STREET	RIVER VIEW AVENUE	367	23	8,441	R - Residential/Local	O - AC/AC	81	29.26
CANTER	2399	CANTER LANE	FURLONG PLACE	CUL-DE-SAC	453	31	14,043	R - Residential/Local	A - AC	84	28.54
CARRIA	108A	CARRIAGE WAY	ROSEMONT ROAD	SUNCREST DRIVE	1,343	24	32,232	C - Collector	A - AC	23	0

Street ID	Section ID	Street Name	From	To	Length	Width	Area	Functional Class	Surface Type	Current PCI	Remaining Life
CARRIA	108B	CARRIAGE WAY	SUNCREST DRIVE	SUN CIRCLE (EAST INT)	1,223	36	44,028	C - Collector	A - AC	75	13.65
CARRIA	108C	CARRIAGE WAY	SUN CIRCLE (EAST INT)	BLUEGRASS WAY	2,036	36	73,296	C - Collector	A - AC	48	4.87
CARRIA	108D	CARRIAGE WAY	BLUEGRASS WAY	HIDDEN SPRINGS ROAD	2,011	36	72,396	C - Collector	A - AC	58	7.61
CARSON	3399	CARSON DRIVE	FALCON DRIVE	TAYLOR DRIVE	315	28	8,820	R - Residential/Local	A - AC	79	29.74
CASCAD	2342	CASCADE STREET	BURNS STREET	CUL-DE-SAC	884	16	14,144	R - Residential/Local	O - AC/AC	90	48.13
CASCAD	3319	CASCADE TERRACE	PONDERAY DRIVE	#3409 CASCADE TERRACE	1,760	25	44,000	R - Residential/Local	A - AC	82	27.52
CASCAD	3386	CASCADE TERRACE	#3409 CASCADE TERRACE	CUL-DE-SAC	522	25	13,050	R - Residential/Local	A - AC	82	27.52
CAUFIE	2328A	CAUFIELD STREET	WILLAMETTE DRIVE	CUL-DE-SAC	1,142	29	33,118	R - Residential/Local	A - AC	78	28.7
CAUFIE	2328B	CAUFIELD STREET	RANDALL ST	TOMPKINS STREET	308	24	7,392	R - Residential/Local	O - AC/AC	80	30.67
CAUSEY	2412	CAUSEY WAY	SERANGO DRIVE	SUMMIT STREET	331	36	11,916	R - Residential/Local	A - AC	88	30.93
CEDARC	1340	CEDAR COURT	RIVER EDGE LANE	CUL-DE-SAC	204	45	9,180	R - Residential/Local	A - AC	80	26.05
CEDARO	102A	CEDAROAK DRIVE	WILLAMETTE DR. (HWY.43)	OLD RIVER DRIVE	431	33	14,223	C - Collector	O - AC/AC	78	21.37
CEDARO	102B	CEDAROAK DRIVE	OLD RIVER DRIVE	TRILLIUM DRIVE	1,242	28	34,776	C - Collector	O - AC/AC	83	25.89
CEDARO	102C	CEDAROAK DRIVE	TRILLIUM DRIVE	ELMRAN AVENUE	1,422	25	35,550	C - Collector	A - AC	31	1.05
CENTUR	2321	CENTURY LANE	LOWRY DRIVE	CUL-DE-SAC	485	36	17,460	R - Residential/Local	A - AC	6	0
CHAPAR	3391	CHAPARREL DR.	PONDERAY DR.	CHELAN DR.	248	30	7,440	R - Residential/Local	A - AC	81	31.96
CHARMA	3352	CHARMAN STREET	DEAD END	KELLY STREET	800	23	18,400	R - Residential/Local	A - AC	81	27.04
CHELAN	3392	CHELAN DR.	BELKNAP (3400 BLK.)	DEAD END (3500 BLK.)	2,348	30	70,440	R - Residential/Local	A - AC	80	30.72
CHELAN	3394	CHELAN LOOP	CHELAN DR.	CHELAN DR.	746	20	14,920	R - Residential/Local	A - AC	77	27.31
CHEROK	1343	CHEROKEE COURT	OLD RIVER DRIVE	CUL-DE-SAC	363	20	7,260	R - Residential/Local	A - AC	47	8.24
CHERYL	4346A	CHERYL DRIVE	16TH STREET	100 FT. WEST OF KIMBERLY DR	687	24	16,488	R - Residential/Local	A - AC	68	19.67
CHERYL	4346B	CHERYL DRIVE	100 FT. WEST OF KIMBERLY DR	225 FT. WEST OF KATHERINE CT	493	23	11,339	R - Residential/Local	A - AC	76	23.99
CHESTN	3365	CHESTNUT STREET	MAPLE STREET	DEAD END (#4805 CHESTNUT ST.)	229	17	3,893	R - Residential/Local	A - AC	13	0
CHESTN	404	CHESTNUT STREET	SUNSET AVENUE	WILLAMETTE FALLS DRIVE	637	31	19,747	C - Collector	A - AC	46	4.56
CHEYEN	2401	CHEYENNE TERRACE	CLUBHOUSE DRIVE	CUL-DE-SAC	434	29	12,586	R - Residential/Local	A - AC	86	29.76
CHICKA	2415	CHICKADEE COURT	HORTON ROAD	CUL-DE-SAC	269	32	8,608	R - Residential/Local	A - AC	62	16.13
CHIPPE	1331	CHIPPEWA COURT	FAIRVIEW WAY	CUL-DE-SAC	458	26	11,908	R - Residential/Local	A - AC	78	29.2
CHRIST	4323	CHRISTY COURT	13TH STREET	CUL-DE-SAC	462	36	16,632	R - Residential/Local	A - AC	45	7.28

Printed: 06/15/2011

Street ID	Section ID	Street Name	From	To	Length	Width	Area	Functional Class	Surface Type	Current PCI	Remaining Life
CHURCH	2385	CHURCHILL COURT	CHURCHILL DOWNS DRIVE	CUL-DE-SAC	144	29	4,176	R - Residential/Local	A - AC	81	32.07
CHURCH	2007	CHURCHILL DOWNS DR.	SANTA ANITA DRIVE	BAY MEADOWS DRIVE	2,052	33	67,716	O - Other	A - AC	83	27.91
CHURCH	2387	CHURCHILL TERRACE	CHURCHILL DOWNS DRIVE	CUL-DE-SAC	405	30	12,150	R - Residential/Local	A - AC	90	31.98
CLARK	303A	CLARK STREET	LONG STREET	OREGON CITY BLVD.	1,265	44	55,660	C - Collector	O - AC/AC	77	20.37
CLARKS	303B	CLARK STREET	OREGON CITY BLVD.	SKYLINE DRIVE	1,847	24	44,328	C - Collector	A - AC	54	6.61
CLUBHO	2350	CLUBHOUSE CIRCLE	PIMLICO DRIVE	SANTA ANITA DRIVE	1,026	33	33,858	R - Residential/Local	A - AC	31	1.9
CLUBCT	2351	CLUBHOUSE COURT	CLUBHOUSE CIRCLE	CUL-DE-SAC	760	24	18,240	R - Residential/Local	A - AC	86	29.76
CLUBHO	2402A	CLUBHOUSE DRIVE	CHURCHILL DOWNS DRIVE	CHEYENNE TERRACE	399	27	10,773	R - Residential/Local	A - AC	89	31.47
CLUBHO	2402B	CLUBHOUSE DRIVE	CHEYENNE TERRACE	SANTA ANITA DRIVE	863	27	23,301	R - Residential/Local	A - AC	22	0
COEURD	3322A	COEUR DALENE DRIVE	PONDERAY DRIVE	SOUTH RD.	1,960	29	56,840	R - Residential/Local	A - AC	79	29.76
COEURD	3322B	COEUR DALENE DRIVE	HOUSE #2600 DEAD END	HOUSE #2690 DEAD END	628	28	17,584	R - Residential/Local	A - AC	79	28.59
COHOLN	3402	COHO LANE	PARKER RD	HOUSE #4750	440	32	14,080	R - Residential/Local	A - AC	77	26.35
COHOLN	3402A	COHO LANE	HOUSE #4750	RIDGE LN	886	29	25,694	R - Residential/Local	A - AC	88	36.75
COLLEG	1362	COLLEGE HILL PLACE	HILLSIDE DRIVE	DEAD END	621	36	22,356	R - Residential/Local	A - AC	37	3.87
COLLEG	1363	COLLEGE VIEW	UPPER MIDHILL	DEAD END	312	36	11,232	R - Residential/Local	A - AC	66	18.55
CONEST	2398	CONESTOGA LANE	CHURCHILL DOWNS DRIVE	CUL-DE-SAC	979	30	29,370	R - Residential/Local	A - AC	80	25.99
CORNWA	3350	CORNWALL STREET	SOUTH DEAD END	SUNSET AVENUE	611	19	11,609	R - Residential/Local	A - AC	13	0
CORNWA	37	CORNWALL STREET	SUNSET AVENUE	OXFORD STREET	1,781	36	64,116	A - Arterial	O - AC/AC	64	13.12
COTTON	1327	COTTONWOOD COURT	HIDDEN SPRINGS ROAD	CUL-DE-SAC	715	37	26,455	R - Residential/Local	A - AC	82	27.27
CRESC	3318	CRESCENT DRIVE	PONDERAY DRIVE	SABO LN	954	29	27,666	R - Residential/Local	A - AC	79	29.76
CRESTV	3406A	CRESTVIEW DRIVE	BLAND CIRCLE (SOUTH INT.)	DEAD END (HOUSE #2474)	816	30	24,480	R - Residential/Local	A - AC	81	29.18
CRESTV	3406B	CRESTVIEW DRIVE	DEAD END (NORTH)	BLAND CIRCLE	980	30	29,400	R - Residential/Local	A - AC	83	32.27
CRESTV	3406C	CRESTVIEW DRIVE	BLAND CIRCLE	ALPINE DRIVE	246	32	7,872	R - Residential/Local	A - AC	70	20.28
CRESTW	1303	CRESTWOOD CT.	WILDWOOD DRIVE	CUL-DE-SAC	219	28	6,132	R - Residential/Local	A - AC	76	27.26
CROWNC	3378	CROWN COURT	CROWN STREET	CUL-DE-SAC	222	36	7,992	R - Residential/Local	O - AC/AC	76	28.37
CROWNS	3002	CROWN STREET	CROWN COURT	OREGON CITY LOOP	576	36	20,736	O - Other	O - AC/AC	84	33.24

Street ID	Section ID	Street Name	From	To	Length	Width	Area	Functional Class	Surface Type	Current PCI	Remaining Life
CRYSTA	3100	CRYSTAL TERRACE	SALAMO RD	COEUR D' ALEUE DR	191	28	5,348	R - Residential/Local	A - AC	82	32.37
CUSHMA	2335	CUSHMAN DRIVE	PERRIN STREET	CUL-DE-SAC	185	32	5,920	R - Residential/Local	O - AC/AC	88	42.86
DAMON	3825	DAMON DRIVE	PARKER RD	WINKEL WAY	155	25	3,875	R - Residential/Local	A - AC	88	35.38
DAVENP	2354	DAVENPORT STREET	DEAD END @ S. OF BUCK ST	RANDALL STREET	345	22	7,590	R - Residential/Local	A - AC	53	10.75
DAWSON	3410	DAWSON COURT	WILD ROSE LP	CUL DE SAC	107	29	3,103	R - Residential/Local	A - AC	78	25.42
DAYRD	3800	DAY ROAD	BLAND CIRCLE	SALAMO ROAD	865	30	25,950	R - Residential/Local	A - AC	75	23.16
DEBOKR	308A	DE BOK ROAD	WISTERIA ROAD	KILLARNEY DRIVE	682	36	24,552	C - Collector	A - AC	56	7.31
DEBOKR	308B	DE BOK ROAD	KILLARNEY DRIVE	ROSEMARIE DRIVE	506	29	14,674	C - Collector	O - AC/AC	85	28.54
DEBOKR	308C	DE BOK ROAD	ROSEMARIE DRIVE	MARGERIE STREET	559	38	21,242	C - Collector	O - AC/AC	87	31.5
DEBOKR	308D	DE BOK ROAD	MARGERIE STREET	BLANKENSHIP ROAD	1,172	38	44,536	C - Collector	O - AC/AC	86	29.98
DEANAD	1389	DEANA DR.	SPRING RIDGE DR.	CARRIAGE WAY	520	29	15,080	R - Residential/Local	A - AC	86	29.76
DERBY	1307	DERBY CT.	CARRIAGE WAY	CUL-DE-SAC	480	30	14,400	R - Residential/Local	A - AC	86	29.77
DERBYS	1002A	DERBY STREET	SUNCREST DRIVE	CALIENTE COURT	819	36	29,484	O - Other	A - AC	39	4.67
DERBYS	1002B	DERBY STREET	CALIENTE COURT	CARRIAGE WAY	1,535	40	61,400	O - Other	A - AC	81	26.63
DESCHU	3811	DESCHUTES LANE	HASKINS RD	ROGUE WAY	378	30	11,340	R - Residential/Local	A - AC	80	28.54
DILLON	3417	DILLON LANE	PARKER RD	DEAD END	290	17	4,930	R - Residential/Local	A - AC	78	25.42
DILLOW	2001A	DILLOW DRIVE	WILLAMETTE DRIVE	LARSON AVENUE	1,386	17	23,562	O - Other	A - AC	57	13.39
DILLOW	2001B	DILLOW DRIVE	LARSON AVENUE	FAILING STREET	1,007	24	24,168	O - Other	O - AC/AC	91	36.72
DODGEW	4319	DODGE WAY	16TH STREET	CUL-DE-SAC	380	30	11,400	R - Residential/Local	A - AC	74	23.4
DOLLAR	44A	DOLLAR STREET	WILLAMETTE FALLS DRIVE	BRANDON PLACE	492	20	9,840	A - Arterial	A - AC	23	0
DOLLAR	44B	DOLLAR STREET	BRANDON STREET	WILLAMETTE FALLS DRIVE (EAST)	5,123	26	133,198	A - Arterial	O - AC/AC	81	23.16
DONEGA	3312	DONEGAL COURT	KILLARNEY DRIVE	CUL-DE-SAC	683	34	23,222	R - Residential/Local	A - AC	70	21.7
DORALC	4314	DORAL COURT	DOLLAR STREET	CUL-DE-SAC	223	36	8,028	R - Residential/Local	A - AC	61	15.95
DOUGLA	4305	DOUGLAS DRIVE	OSTMAN ROAD	CUL-DE-SAC	360	31	11,160	R - Residential/Local	A - AC	9	0
EASYST	2352	EASY STREET	BROADWAY STREET	WILLAMETTE DRIVE	583	24	13,992	R - Residential/Local	A - AC	17	0
EDGEWA	2318	EDGEWATER COURT	FAILING STREET	CUL-DE-SAC	403	25	10,075	R - Residential/Local	A - AC	81	26.69
EDGEWO	3335	EDGEWOOD COURT	WELLINGTON DRIVE	CUL-DE-SAC	190	29	5,510	R - Residential/Local	A - AC	79	25.35
ELLIOT	2327	ELLIOTT STREET	WILLAMETTE DRIVE	BUCK STREET	267	37	9,879	R - Residential/Local	A - AC	60	14.33
ELLIOT	2327A	ELLIOTT STREET	BUCK ST	DEAD END NORTH	237	18	4,266	R - Residential/Local	A - AC	87	36.96
ELMRAN	103A	ELMRAN AVE.	OLD RIVER DRIVE	CALAROGA DR.	1,047	24	25,128	C - Collector	A - AC	9	0
ELMRAN	103B	ELMRAN AVE.	CALAROGA DR.	CEDAROAK DR.	804	24	19,296	C - Collector	A - AC	6	0

Street ID	Section ID	Street Name	From	To	Length	Width	Area	Functional Class	Surface Type	Current PCI	Remaining Life
ELMRAN	103C	ELMRAN AVE.	CEDAROAK DR.	STEAMBOAT WAY	593	27	16,011	C - Collector	A - AC	33	1.47
ELMRAN	103D	ELMRAN AVE.	STEAMBOAT WAY	CEDAROAK BOAT RAMP	828	22	18,216	C - Collector	A - AC	4	0
EVAHLA	4348	EVAH LANE	KIMBERLY DRIVE	DEAD END	472	25	11,800	R - Residential/Local	A - AC	76	26.48
EVERGR	2380	EVERGREEN DRIVE	FIRWOOD DRIVE	BRIDGEVIEW DR WEST INT	484	36	17,424	R - Residential/Local	A - AC	79	25.41
EXETER	3005A	EXETER STREET	SUNSET AVENUE	LANCASTER STREET	540	18	9,720	O - Other	O - AC/AC	80	25.67
EXETER	3005B	EXETER STREET	LANCASTER STREET	OXFORD STREET	856	29	24,824	O - Other	A - AC	60	14.25
EXETER	3388	EXETER STREET	SOUTHSLOPE WAY	SUNSET AVENUE	412	33	13,596	R - Residential/Local	A - AC	66	18.71
FAILIN	2003A	FAILING STREET	WILLAMETTE DRIVE	BUCK STREET	391	31	12,121	O - Other	A - AC	16	0
FAILIN	2003B	FAILING STREET	BUCK STREET	DILLOW ST	1,438	27	38,826	O - Other	A - AC	40	5.33
FAILIN	2003C	FAILING STREET	DILLOW ST	CUL DE SAC	284	21	5,964	O - Other	A - AC	73	23.89
FAIRHA	3014	FAIRHAVEN CT	FAIRHAVEN DR	CUL DE SAC (34' RADIUS)	346	32	11,072	R - Residential/Local	A - AC	78	27.67
FAIRHA	3007A	FAIRHAVEN DRIVE	100 FT S. OF RIVER VIEW DRIVE	HOUSE #3817	1,440	33	47,520	O - Other	A - AC	65	18.16
FAIRHA	3007B	FAIRHAVEN DRIVE	HOUSE #3817	FAIRHAVEN COURT	746	32	23,872	O - Other	A - AC	75	24.22
FAIRHA	3007C	FAIRHAVEN DRIVE	FAIRHAVEN CT	BEACON HILL DR	755	21	15,855	O - Other	A - AC	77	26.46
FAIRVI	1332A	FAIRVIEW WAY	WILLAMETTE DRIVE	ROSE WAY	644	21	13,524	R - Residential/Local	A - AC	61	15.17
FAIRVI	1332B	FAIRVIEW WAY	ROSE WAY	DEAD END	989	30	29,670	R - Residential/Local	A - AC	69	21.29
FALCON	3307A	FALCON DRIVE	TANLER DRIVE	CARSON DR.	1,345	29	39,005	R - Residential/Local	A - AC	66	18.58
FALCON	3307B	FALCON DRIVE	CARSON DRIVE	BLAND CIRCLE	280	30	8,400	R - Residential/Local	A - AC	73	21.48
FALLSV	3359	FALLS VIEW AVENUE	DEAD END	MAPLE STREET	386	16	6,176	R - Residential/Local	A - AC	14	0
FARRVI	4307	FARRVIEW COURT	19TH STREET	CUL-DE-SAC	646	34	21,964	R - Residential/Local	A - AC	14	0
FARRVI	3309	FARRVISTA DRIVE	MARGERIE STREET	DE BOK ROAD	373	36	13,428	R - Residential/Local	A - AC	18	0
FIELDS	4362	FIELDS DRIVE	DOLLAR ST	OSTMAN RD	615	25	15,375	R - Residential/Local	A - AC	89	31.38
FIRCRE	3803	FIRCREST DRIVE	BLAND CIRCLE	DEAD END	650	26	16,900	R - Residential/Local	A - AC	84	33.97
FIRST	2355	FIRST COURT STREET	WILLSON STREET	MC KILLICAN STREET	935	16	14,960	R - Residential/Local	A - AC	78	24.77
FIRWOO	2381	FIRWOOD COURT	FIRWOOD DRIVE	CUL-DE-SAC	149	34	5,066	R - Residential/Local	A - AC	77	24.14
FIRWOO	2379	FIRWOOD DRIVE	SKYLINE DRIVE	CUL-DE-SAC	637	36	22,932	R - Residential/Local	A - AC	71	20.43
FOREST	1326	FOREST COURT	WILDERNESS DRIVE	CUL-DE-SAC	254	34	8,636	R - Residential/Local	O - AC/AC	80	29.37
FURLON	4363	FURLONG COURT	FURLONG PLACE	CUL-DE-SAC	396	30	11,880	R - Residential/Local	A - AC	96	47.45
FURLON	2400	FURLONG PLACE	CHURCHILL DOWNS DRIVE	FURLONG CT	459	30	13,770	R - Residential/Local	A - AC	86	29.76
FURLON	2400A	FURLONG PLACE	FURLONG CT	ROSEMONT RD	339	30	10,170	R - Residential/Local	A - AC	96	47.45

Street ID	Section ID	Street Name	From	To	Length	Width	Area	Functional Class	Surface Type	Current PCI	Remaining Life
GALLER	1392	GALLERY WAY	SUNCREST DR.	CUL-DE-SAC	290	29	8,410	R - Residential/Local	A - AC	87	30.36
GARDEN	2422	GARDEN STREET	HOOD STREET	DEAD END	233	24	5,592	R - Residential/Local	A - AC	88	30.98
GARDNE	3821	GARDNER LANE	IRELAND LN	DEAD END WEST	274	20	5,480	R - Residential/Local	A - AC	92	45.28
GEERST	2326	GEER STREET	DEAD END (HAMMERLE STREET)	DEAD END (RANDALL STREET)	545	19	10,355	R - Residential/Local	A - AC	13	0
GLENTE	1350	GLEN TERRACE	TRILLIUM DRIVE	ELMRAN AVENUE	964	18	17,352	R - Residential/Local	A - AC	24	0
GLORIA	3374	GLORIA DRIVE	SUMMIT STREET	CUL-DE-SAC	622	17	10,574	R - Residential/Local	A - AC	58	14.15
GRANTS	3343	GRANT STREET	SUNSET AVENUE	CHARMAN STREET	610	22	13,420	R - Residential/Local	A - AC	57	12.74
GREENE	3327	GREENE STREET	TANGLER DRIVE	SALAMO ROAD	1,909	44	83,996	R - Residential/Local	A - AC	79	25.78
GREGOR	2427	GREGORY LANE	ROSEMONT RD	CUL DE SAC	566	27	15,282	R - Residential/Local	A - AC	92	32.87
GROVE	2349	GROVE STREET	HOLLY STREET	DEAD END	533	27	14,391	R - Residential/Local	O - AC/AC	87	37.65
HALEDR	3822	HALE DRIVE	COHO LN	RIDGE LN	272	29	7,888	R - Residential/Local	A - AC	90	41.21
HALLCT	3325	HALL COURT	GREENE STREET	CUL-DE-SAC	241	36	8,676	R - Residential/Local	A - AC	80	26.41
HALLST	3324A	HALL STREET	GREENE STREET	137 FT. SOUTH OF GREENE ST	137	36	4,932	R - Residential/Local	A - AC	65	18.23
HALLST	3324B	HALL STREET	137 FT. SOUTH OF GREENE ST	CUL DE SAC	482	26	12,532	R - Residential/Local	A - AC	76	23.99
HAMMER	2012	HAMMERLE STREET	ATKINSON STREET	BARCLAY STREET	340	16	5,440	R - Residential/Local	A - AC	70	22.15
HASKIN	3012A	HASKINS DRIVE	KENSINGTON CT	REMINGTON DR	260	34	8,840	R - Residential/Local	A - AC	59	12.75
HASKIN	3012B	HASKINS DRIVE	REMINGTON DR	DEAD END (EAST)	765	30	22,950	R - Residential/Local	A - AC	74	22.52
HAVERH	2421	HAVERHILL COURT	HAVERHILL COURT (6373)	HAVERHILL COURT (6250)	721	30	21,630	R - Residential/Local	A - AC	85	29.16
HAVERH	2414	HAVERHILL WAY	HORTON ROAD	HAVERHILL COURT	408	30	12,240	R - Residential/Local	A - AC	86	29.77
HEATER	2336	HEATER COURT	PERRIN STREET	DEAD END	322	13	4,186	R - Residential/Local	O - AC/AC	15	0
HEMLOC	3358	HEMLOCK STREET	FALLS VIEW AVENUE	SUNSET AVENUE	271	17	4,607	R - Residential/Local	A - AC	13	0
HIDDEN	11A	HIDDEN SPRINGS RD.	ROSEMONT ROAD	SUNCREST DRIVE	541	40	21,640	A - Arterial	A - AC	73	15.96
HIDDEN	11B	HIDDEN SPRINGS RD.	SUNCREST DRIVE	SANTA ANITA DRIVE	1,492	39	58,188	A - Arterial	A - AC	50	7.38
HIDDEN	11C	HIDDEN SPRINGS RD.	SANTA ANITA DRIVE	CARRIAGE WAY	717	42	30,114	A - Arterial	A - AC	52	8.09
HIDDEN	11D	HIDDEN SPRINGS RD.	CARRIAGE WAY	BLUEGRASS WAY	870	50	43,500	A - Arterial	A - AC	48	6.86
HIDDEN	11E	HIDDEN SPRINGS RD.	BLUEGRASS WAY	AUTUMN VIEW COURT	1,515	28	42,420	A - Arterial	O - AC/AC	89	27.59
HIDDEN	11F	HIDDEN SPRINGS ROAD	AUTUMN VIEW COURT	WILLAMETTE DRIVE	1,300	42	54,600	A - Arterial	A - AC	93	30.99
HIGHTO	4360	HIGH TOUCH STREET	19TH ST	CUL DE SAC (36' RADIUS)	567	28	15,876	R - Residential/Local	A - AC	59	12.75
HILLCR	1379	HILLCREST COURT	HILLCREST DRIVE	CUL-DE-SAC	706	18	12,708	R - Residential/Local	A - AC	56	12.08

Street ID	Section ID	Street Name	From	To	Length	Width	Area	Functional Class	Surface Type	Current PCI	Remaining Life
HILLCR	107A	HILLCREST DRIVE	MARYLHURST DR. (WEST END)	SUNCREST DRIVE	881	27	23,787	C - Collector	A - AC	10	0
HILLCR	107B	HILLCREST DRIVE	SUNCREST DRIVE	SYLVAN DRIVE	1,408	22	30,976	C - Collector	A - AC	36	2.12
HILLCR	107C	HILLCREST DRIVE	SYLVAN DRIVE	MARYLHURST DRIVE (EAST END)	709	26	18,434	C - Collector	A - AC	58	7.97
HILLHO	4318	HILLHOUSE DRIVE	16TH STREET	SHORT STREET	1,150	35	40,250	R - Residential/Local	A - AC	41	5.38
HILLSI	1365	HILLSIDE COURT	COLLEGE HILL PLACE	CUL-DE-SAC	699	36	25,164	R - Residential/Local	A - AC	78	24.77
HILLSI	1364	HILLSIDE DRIVE	COLLEGE HILL PLACE	DEAD END	683	36	24,588	R - Residential/Local	A - AC	78	24.77
HOLLY	2345A	HOLLY STREET	WILLAMETTE DRIVE	GROVE STREET	634	38	24,092	R - Residential/Local	O - AC/AC	89	42.48
HOLLY	2345B	HOLLY STREET	GROVE STREET	RIVER STREET	600	26	15,600	R - Residential/Local	O - AC/AC	90	45.24
HOLMES	2325	HOLMES STREET	WILLAMETTE DRIVE	DEAD END	1,175	31	36,425	R - Residential/Local	O - AC/AC	67	20.58
HOODST	204A	HOOD STREET	WILLAMETTE DRIVE	POST OFFICE (5665 HOOD)	416	28	11,648	C - Collector	A - AC	81	16
HOODST	204B	HOOD STREET	POST OFFICE (5665 HOOD)	BURNS ST	339	28	9,492	C - Collector	O - AC/AC	77	21.49
HOODST	2423	HOOD STREET	BURNS STREET	DEAD END	104	32	3,328	R - Residential/Local	A - AC	70	22.09
HOODVI	3419	HOODVIEW AVENUE	SALAMO RD	NOBLE LN (EAST INT.)	980	26	25,480	R - Residential/Local	A - AC	81	29.65
HOODVC	3807	HOODVIEW COURT	SALAMO RD	CUL DE SAC	192	26	4,992	R - Residential/Local	A - AC	81	29.03
HORTON	2396	HORTON COURT	HORTON ROAD	CUL-DE-SAC	606	36	21,816	R - Residential/Local	A - AC	69	19.2
HORTON	202A	HORTON ROAD	SANTA ANITA DRIVE	DEAD END (MILES DRIVE)	1,546	38	58,748	C - Collector	A - AC	87	19.08
HORTON	202A2	HORTON ROAD	DEAD END	PARKVIEW TERRACE	715	30	21,450	R - Residential/Local	A - AC	79	28.43
HORTON	202B	HORTON ROAD	PARKVIEW TERR.	SERANGO DR.	791	43	34,013	C - Collector	A - AC	83	17
HORTON	202C	HORTON ROAD	SERANGO DR.	SUMMIT ST.	423	43	18,189	C - Collector	A - AC	87	19.08
HUGHES	2320	HUGHES DRIVE	WILLAMETTE DRIVE	LOWRY DRIVE	689	19	13,091	R - Residential/Local	O - AC/AC	95	52.88
HUNTER	1317	HUNTER COURT	CARRIAGE WAY	CUL-DE-SAC	377	25	9,425	R - Residential/Local	A - AC	67	19.7
HUNTER	1316	HUNTER WAY	BELLEVUE WAY	CARRIAGE WAY (2951)	1,266	32	40,512	R - Residential/Local	A - AC	68	20.37
IMPERI	3006A	IMPERIAL DRIVE	CUL-DE-SAC (WEST END)	ROUNDAABOUT	1,187	34	40,358	O - Other	A - AC	54	10.73
IMPERI	3006B	IMPERIAL DRIVE	ROUNDAABOUT	#4203 IMPERIAL DRIVE	974	36	35,064	O - Other	A - AC	82	27.66
IMPERI	3006C	IMPERIAL DRIVE	#4203 IMPERIAL DRIVE	SUNSET AVENUE	1,553	44	68,332	O - Other	A - AC	67	19.69
IRELAN	3820	IRELAND LANE	GARDNER LN	ROSEMONT RD	808	24	19,392	R - Residential/Local	A - AC	90	39.87
IRVING	2333	IRVING STREET	DEAD END (HAMMERLE STREET)	BUCK STREET	189	26	4,914	R - Residential/Local	A - AC	80	26.05
JAMIEC	4321	JAMIE CIRCLE	16TH STREET	END OF LOOP	1,304	37	48,248	R - Residential/Local	A - AC	71	20.71

Street ID	Section ID	Street Name	From	To	Length	Width	Area	Functional Class	Surface Type	Current PCI	Remaining Life
JAYCT	4349	JAY COURT	KIMBERLY DRIVE	DEAD END	275	25	6,875	R - Residential/Local	A - AC	76	26.48
JOHNSO	405A	JOHNSON ROAD	BLANKENSHIP ROAD	19TH STREET	543	40	21,720	C - Collector	A - AC	41	3.01
JOHNSO	405B	JOHNSON ROAD	19TH STREET	340' E. OF WOODBINE RD. (C/L)	2,882	27	77,814	C - Collector	A - AC	19	0
JOHNYN	4357	JOHNYNE CT.	NICOLE DR.	CUL-DE-SAC	180	29	5,220	R - Residential/Local	A - AC	79	25.78
JOLIE	2004A	JOLIE POINTE ROAD	WILLAMETTE DRIVE	W. END RAINIER PLACE	280	20	5,600	O - Other	A - AC	57	12.05
JOLIE	2004B	JOLIE POINTE ROAD	W. END RAINIER PLACE	LARSON AVENUE	1,750	26	45,500	O - Other	O - AC/AC	83	30.99
JOURNE	3409	JOURNEY COURT	WILD ROSE WAY	CUL DE SAC	148	26	3,848	R - Residential/Local	A - AC	75	22.31
KST	2377	K STREET	WEBB STREET	TERRACE DRIVE	439	17	7,463	R - Residential/Local	O - AC/AC	86	38.39
KANTER	1329	KANTARA CT.	KANTARA WAY	DEAD END	433	13	5,629	R - Residential/Local	A - AC	52	10.87
KANTER	1330	KANTARA WAY	WALLING CIRCLE	KANTARA COURT	733	18	13,194	R - Residential/Local	A - AC	17	0
KAPTEY	1381	KAPTEYNS STREET	VALLEY VIEW DR	CUL-DE-SAC	1,465	33	48,345	R - Residential/Local	A - AC	79	25.35
KATHER	4361	KATHERINE COURT	CHERYL DRIVE	CUL DE SAC	343	22	7,546	R - Residential/Local	A - AC	89	31.38
KELLYS	3342A	KELLY STREET	SUNSET AVENUE	DEAD END	296	20	5,920	R - Residential/Local	A - AC	26	0.29
KELLYS	3342B	KELLY STREET	CANEMAH STREET	OAK STREET	242	19	4,598	R - Residential/Local	A - AC	82	27.66
KENSIN	3013A	KENSINGTON CT	CUL DE SAC (SOUTH)	HASKINS RD	286	34	9,724	R - Residential/Local	A - AC	74	23.17
KENSIN	3013B	KENSINGTON CT	HASKINGS RD	CUL DE SAC (NE)	594	30	17,820	R - Residential/Local	A - AC	78	26.59
KENTHO	1354	KENTHORPE WAY	OLD RIVER DRIVE	DEAD END	2,427	19	46,113	R - Residential/Local	A - AC	16	0
KILKEN	3314	KILKENNY COURT	KILLARNEY DRIVE	CUL-DE-SAC	459	36	16,524	R - Residential/Local	A - AC	83	28.27
KILLAR	3003B	KILLARNEY DRIVE	MATHENY DRIVE	ALPINE DR	1,450	34	49,300	O - Other	A - AC	75	23.22
KILLAR	3003A	KILLARRNEY DRIVE	DE BOK ROAD	MATHENY DRIVE	863	34	29,342	O - Other	A - AC	76	27.58
KIMBER	4347	KIMBERLY DRIVE	CHERYL DRIVE	15TH STREET	1,217	29	35,293	R - Residential/Local	A - AC	72	22.36
KNOXST	3373	KNOX STREET	PROSPECT STREET	SUMMIT STREET	505	36	18,180	R - Residential/Local	O - AC/AC	80	27.01
KOBUKC	3377	KOBUK COURT	CROWN STREET	CUL-DE-SAC	355	36	12,780	R - Residential/Local	A - AC	80	30.02
LFAVE	2307	LA FAVE STREET	LOWELL AVENUE	MUNGER DRIVE	925	21	19,425	R - Residential/Local	A - AC	16	0
LAMPLI	2316	LAMPLIGHTER COURT	LARSON AVENUE	CUL-DE-SAC	335	34	11,390	R - Residential/Local	O - AC/AC	83	38.35
LANCAS	33	LANCASTER STREET	PARKER ROAD	CORNWALL STREET	827	24	16,540	A - Arterial	O - AC/AC	68	15.32
LANCAS	3347	LANCASTER STREET	CORNWALL STREET	EXETER STREET	894	23	20,562	R - Residential/Local	O - AC/AC	76	21.93
LANDIS	3819	LANDIS ST	STONEGATE LN	DEAD END	746	25	18,650	R - Residential/Local	A - AC	90	31.98
LARSON	2310A	LARSON AVENUE	DILLOW DRIVE	MAPLE TERRACE	296	25	7,400	R - Residential/Local	A - AC	43	6.26
LARSON	2310B	LARSON AVENUE	MAPLE TERRACE	JOLIE POINTE ROAD	604	34	20,536	R - Residential/Local	O - AC/AC	88	40.59
LAZYRI	1338	LAZY RIVER DRIVE	WILLAMETTE DRIVE	DEAD END	253	19	4,807	R - Residential/Local	A - AC	61	14.81
LEIGH	1367	LEIGH COURT	SKYE PARKWAY	CUL-DE-SAC	147	28	4,116	R - Residential/Local	A - AC	74	22.26

Street ID	Section ID	Street Name	From	To	Length	Width	Area	Functional Class	Surface Type	Current PCI	Remaining Life
LEONAR	3816	LEONARD STREET	SIMPSON ST	DEAD END	224	19	4,256	R - Residential/Local	A - AC	78	26.59
LESLIE	4358	LESLIES WAY	11TH STREET	10TH STREET	451	32	14,432	R - Residential/Local	A - AC	73	22.6
LEWIS	2338	LEWIS STREET	WILLAMETTE DRIVE	PERRIN STREET	544	22	11,968	R - Residential/Local	O - AC/AC	33	3.06
LEWTHW	2370	LEWTHWAITE STREET	BROADWAY STREET	AMY STREET	410	36	14,760	R - Residential/Local	A - AC	75	22.88
LEXING	1311	LEXINGTON TERRACE	DERBY STREET	CUL-DE-SAC	791	29	22,939	R - Residential/Local	A - AC	86	29.76
LIMERI	3311	LIMERICK LANE	KILLARNEY DRIVE	CUL-DE-SAC	616	34	20,944	R - Residential/Local	A - AC	61	15.51
LINNLN	2391	LINN LANE	ROSEMONT ROAD	DEAD END	612	17	10,404	R - Residential/Local	A - AC	13	0
LOISLN	3326	LOIS LANE	BARNES CIRCLE	DEAD END	222	36	7,992	R - Residential/Local	A - AC	64	17.81
LONGST	302	LONG STREET	CLARK STREET	EXETER STREET	1,136	32	36,352	C - Collector	O - AC/AC	74	17.53
LOWELL	2308	LOWELL AVENUE	JOLIE POINTE ROAD	MARK LANE	423	32	13,536	R - Residential/Local	A - AC	36	3.76
LOWERM	1361A	LOWER MIDHILL DRIVE	DEAD END	MARYLHURST DRIVE	902	21	18,942	R - Residential/Local	A - AC	16	0
LOWERM	1361B	LOWER MIDHILL DRIVE	ARBOR DRIVE	DEAD END	557	23	12,811	R - Residential/Local	A - AC	21	0
LOWRY	2322	LOWRY DRIVE	DILLOW DRIVE	TOMPKINS STREET	1,116	24	26,784	R - Residential/Local	O - AC/AC	78	27.97
LUPINE	2395	LUPINE COURT	ROSE PARK DRIVE	CUL-DE-SAC	131	40	5,240	R - Residential/Local	A - AC	86	29.77
MANCHE	3334	MANCHESTER COURT	IMPERIAL DRIVE	DEAD END	256	29	7,424	R - Residential/Local	A - AC	71	21.43
MAPLEC	2314	MAPLE COURT	MAPLE TERRACE	CUL-DE-SAC	183	34	6,222	R - Residential/Local	O - AC/AC	90	45.24
MAPLES	3361A	MAPLE STREET	WALNUT STREET	CHESTNUT STREET	235	36	8,460	R - Residential/Local	A - AC	68	18.67
MAPLES	3361B	MAPLE STREET	FALLS VIEW AVENUE	ALDER STREET	356	25	8,900	R - Residential/Local	A - AC	12	0
MAPLET	2315A	MAPLE TERRACE	LARSON AVENUE	#2120 MAPLE TERRACE	456	36	16,416	R - Residential/Local	A - AC	38	4.61
MAPLET	2315B	MAPLE TERRACE	#2120 MAPLE TERRACE	CUL-DE-SAC	425	34	14,450	R - Residential/Local	O - AC/AC	89	42.48
MAPLET	105A	MAPLETON DRIVE	WILLAMETTE DRIVE	#4284 MAPLETON DR.	1,620	18	29,160	C - Collector	O - AC/AC	71	17.88
MAPLET	105B	MAPLETON DRIVE	#4284 MAPLETON DRIVE	DEAD END (ST. PARK)	1,870	18	33,660	C - Collector	A - AC	41	3.39
MARGER	3315	MARGERY STREET	DE BOK ROAD	CUL-DE-SAC	1,295	36	46,620	R - Residential/Local	A - AC	13	0
MARIA	1337	MARIA COURT	ARBOR DRIVE	CUL-DE-SAC	463	28	12,964	R - Residential/Local	A - AC	63	16.61
MARKLN	2309	MARK LANE	WILLAMETTE DRIVE	MUNGER DRIVE	2,006	32	64,192	R - Residential/Local	A - AC	31	1.91
MARQUE	2313	MARQUETTE CT.	TULANE STREET	CUL-DE-SAC	225	32	7,200	R - Residential/Local	A - AC	71	22.91
MARQUE	2304	MARQUETTE DRIVE	TULANE STREET	JOLIE POINTE ROAD	313	34	10,642	R - Residential/Local	A - AC	21	0
MARTIN	2346	MARTIN COURT	SUNCREST DRIVE	CUL-DE-SAC	339	29	9,831	R - Residential/Local	A - AC	80	25.99

Street ID	Section ID	Street Name	From	To	Length	Width	Area	Functional Class	Surface Type	Current PCI	Remaining Life
MARYLH	1380	MARYLHURST CIRCLE	MARYLHURST DRIVE (785)	MARYLHURST DRIVE (595)	1,021	29	29,609	R - Residential/Local	A - AC	26	0.24
MARYLH	1382	MARYLHURST COURT	MARYLHURST DRIVE	DEAD END	524	18	9,432	R - Residential/Local	A - AC	20	0
MARYLH	106A	MARYLHURST DRIVE	TROON DRIVE	HILLCREST DRIVE	3,857	22	84,854	C - Collector	O - AC/AC	41	4.71
MARYLH	106B	MARYLHURST DRIVE	HILLCREST DRIVE	WILLAMETTE DRIVE	2,569	22	56,518	C - Collector	O - AC/AC	31	1.74
MARYLW	1375	MARYLWOOD CT.	SKYE PARKWAY	CUL-DE-SAC	1,041	26	27,066	R - Residential/Local	A - AC	78	28.7
MATHEN	3310	MATHENY DRIVE	KILLARNEY DRIVE	DEAD END	158	34	5,372	R - Residential/Local	A - AC	80	26.41
MAXFIE	3823	MAXFIELD DRIVE	PARKER RD	WINKEL WAY	205	25	5,125	R - Residential/Local	A - AC	90	39.87
MCKENZ	3317	MC KENZIE COURT	CRESCENT DRIVE	CUL-DE-SAC	249	25	6,225	R - Residential/Local	A - AC	82	27.27
MCKILL	2369	MC KILLICAN LANE	EASY STREET	MC KILLICAN STREET	445	11	4,895	R - Residential/Local	A - AC	55	12.03
MCKILL	206	MC KILLICAN STREET	WEST A STREET	WILLAMETTE DRIVE	962	44	32,328	C - Collector	A - AC	54	6.75
MEADOW	4301	MEADOWVIEW COURT	JOHNSON ROAD	CUL-DE-SAC	495	37	18,315	R - Residential/Local	A - AC	41	5.28
MICHAEL	4356	MICHAEL CT	OSTMAN RD.	CUL-DE-SAC	476	30	14,280	R - Residential/Local	A - AC	76	26.48
MICHAEL	4304A	MICHAEL DR.	#2288 MICHAEL DR.	OSTMAN DR.	463	29	13,427	R - Residential/Local	A - AC	73	23.33
MICHAEL	4304	MICHAEL DRIVE	OSTMAN ROAD	#2288 MICHAEL DR.	740	36	26,640	R - Residential/Local	A - AC	35	3.33
MICHLE	1345	MICHLEN AVENUE	KAPTEYNS STREET	DEAD END	126	36	3,536	R - Residential/Local	A - AC	83	27.91
MIDHIL	1357	MIDHILL CIRCLE	MARYLHURST DRIVE (2671)	MARYLHURST DRIVE (2615)	1,102	16	17,632	R - Residential/Local	A - AC	15	0
MILESD	2010	MILES DRIVE	ROSEMONT ROAD	HORTON ROAD	1,392	36	50,112	O - Other	A - AC	78	28.42
MILLST	403	MILL STREET	TERRITORIAL DRIVE	WILLAMETTE DRIVE	300	33	9,900	C - Collector	A - AC	11	0
MOHAWK	2302	MOHAWK WAY	WILLAMETTE DRIVE	END OF PAVEMENT	443	28	12,404	R - Residential/Local	A - AC	50	9.25
MORGAN	1314	MORGAN COURT	BELLEVUE WAY	CUL-DE-SAC	170	29	4,930	R - Residential/Local	A - AC	77	28.18
MTVIEW	1376	MT. VIEW COURT	SKYE PARKWAY	DEAD END	404	12	4,848	R - Residential/Local	A - AC	85	28.38
MUNGER	2306	MUNGER DRIVE	JOLIE POINTE ROAD	MARK LANE	669	18	12,042	R - Residential/Local	A - AC	13	0
MUSTAN	2362	MUSTANG COURT	SORREL WAY	CUL-DE-SAC	357	24	8,568	R - Residential/Local	A - AC	67	19.61
NELCO	2389	NELCO CIRCLE	SKYLINE DRIVE	DEAD END	600	36	21,600	R - Residential/Local	A - AC	84	28.54
NELCO	2390	NELCO COURT	SKYLINE DRIVE	CUL-DE-SAC	172	36	6,192	R - Residential/Local	A - AC	81	26.63
NICHOL	1320	NICHOLAS CT.	HIDDEN SPRINGS RD.	CUL-DE-SAC	291	28	8,148	R - Residential/Local	A - AC	85	29.16
NICOLE	4326	NICOLE COURT	RIVER HEIGHT CIRCLE	CUL-DE-SAC	538	30	16,140	R - Residential/Local	A - AC	75	26.16
NICOLE	4327	NICOLE DRIVE	#2250 RIVER HEIGHTS CIRCLE	#2120 RIVER HEIGHTS CIRCLE	800	30	24,000	R - Residential/Local	A - AC	66	18.81
NIXON	104A	NIXON AVENUE	MAPLETON DRIVE	ISLAND VIEW TERRACE	1,485	24	35,640	C - Collector	A - AC	47	4.58
NIXON	104B	NIXON AVENUE	ISLAND VIEW TERRACE	ELMRAN AVENUE	1,018	18	18,324	C - Collector	A - AC	13	0

Street ID	Section ID	Street Name	From	To	Length	Width	Area	Functional Class	Surface Type	Current PCI	Remaining Life
NIXON	1384	NIXON AVENUE	ELMRAN AVENUE	STEAMBOAT WAY	610	17	10,370	R - Residential/Local	A - AC	16	0
NOBLE	3418	NOBLE LANE	PARKER RD	HOODVIEW AVE	1,215	26	31,590	R - Residential/Local	A - AC	80	28.38
NOLANL	4316	NOLAN LANE	SHORT STREET	RIDDER LANE	505	26	13,130	R - Residential/Local	A - AC	63	15.98
NOMIEW	3411	NOMIE WAY	WILD ROSE LOOP	SABO LN	580	26	15,080	R - Residential/Local	A - AC	82	30.37
NORFOL	3344A	NORFOLK STREET	FAIRHAVEN DRIVE	SUNSET AVENUE	996	35	34,860	R - Residential/Local	A - AC	12	0
NORFOL	3344B	NORFOLK STREET	SUNSET AVENUE	YORK STREET	724	20	14,480	R - Residential/Local	A - AC	9	0
NORTHH	3815	NORTH HAMPTON COURT	FAIRVIEW DR	CUL DE SAC	295	29	8,555	R - Residential/Local	A - AC	77	24.32
NOVACT	4309	NOVA COURT	19TH STREET	18TH STREET	298	35	10,430	R - Residential/Local	A - AC	80	26.41
OAKST	3354	OAK STREET	KELLY STREET	RIVER VIEW AVENUE	367	23	8,441	R - Residential/Local	O - AC/AC	81	30.58
OAKTRE	1323	OAK TREE COURT	HIDDEN SPRINGS ROAD	CUL-DE-SAC	361	35	12,635	R - Residential/Local	A - AC	66	17.47
OLDRIV	101B	OLD RIVER DRIVE	CEDAROAK DRIVE	RIVER WOODS PLACE	4,135	24	99,240	C - Collector	A - AC	50	5.49
OLDRIV	1393	OLD RIVER DRIVE	DEAD END	CEDAROAK DRIVE	729	18	13,122	R - Residential/Local	A - AC	16	0
ONEALC	3303	ONEAL COURT	TAMARISK DRIVE	CUL-DE-SAC	355	36	12,780	R - Residential/Local	A - AC	68	20
ORCHAR	4311	ORCHARD STREET	19TH STREET	CUL-DE-SAC	366	34	12,444	R - Residential/Local	A - AC	37	4.24
ORCITY	3001A	OREGON CITY BLVD.	CLARK STREET	#2631 OREGON CITY BLVD.	1,146	34	38,964	O - Other	A - AC	23	0
ORCITY	3001B	OREGON CITY BLVD.	#2631 OREGON CITY BLVD.	BONNET DRIVE	408	34	13,872	O - Other	A - AC	11	0
ORCITY	3010	OREGON CITY LOOP	CLARK STREET	OREGON CITY BLVD.	1,149	36	41,364	O - Other	O - AC/AC	83	31.53
OSTMAN	401A	OSTMAN ROAD	WILLAMETTE FALLS DRIVE	DOLLAR STREET	1,183	31	36,673	C - Collector	A - AC	31	1.2
OSTMAN	401B	OSTMAN ROAD	DOLLAR STREET	DOUGLAS STREET	679	27	18,333	C - Collector	A - AC	84	18.2
OSTMAN	401C	OSTMAN ROAD	DOUGLAS STREET	BLANKENSHIP ROAD	630	27	17,010	C - Collector	A - AC	8	0
OSTMAN	4334A	OSTMAN ROAD	MICHAEL DR	BLANKENSHIP RD	288	32	9,216	R - Residential/Local	A - AC	86	29.98
OSTMAN	4334B	OSTMAN ROAD	WILLAMETTE FALLS DRIVE	RANCHO LOBO	484	24	11,616	R - Residential/Local	A - AC	68	18.88
OWLCT	2413	OWL COURT	SERANGO DRIVE	CUL-DE-SAC	184	36	6,624	R - Residential/Local	A - AC	86	29.77
OXFORD	3009	OXFORD STREET	WEST OF SUMMIT STREET	BITTNER STREET	863	27	23,301	O - Other	A - AC	41	5.34
PALOMI	2373	PALOMINO CIRCLE	PIMLICO DRIVE (6601)	PIMLICO DRIVE (6699)	1,116	27	30,132	R - Residential/Local	A - AC	45	7.5
PALOMI	2364	PALOMINO COURT	SORREL WAY	CUL-DE-SAC	256	30	7,680	R - Residential/Local	A - AC	87	30.36
PALOMI	2357A	PALOMINO WAY	PIMLICO DRIVE (2593)	PIMLICO DRIVE (2401)	1,463	30	43,890	R - Residential/Local	A - AC	45	7.5
PALOMI	2357B	PALOMINO WAY	PIMLICO DRIVE	SORREL WAY	1,066	30	31,980	R - Residential/Local	A - AC	83	27.91

Street ID	Section ID	Street Name	From	To	Length	Width	Area	Functional Class	Surface Type	Current PCI	Remaining Life
PARKER	3382	PARKER ROAD	LANCASTER STREET	SUNSET AVENUE	602	32	19,264	R - Residential/Local	O - AC/AC	92	48.54
PARKER	34A	PARKER ROAD	LANCASTER STREET	SUMMER RUN DR	336	24	8,064	A - Arterial	O - AC/AC	81	23.84
PARKER	34B	PARKER ROAD	SUMMER RUN DR	100' W. OF COHO LANE	454	32	14,528	A - Arterial	O - AC/AC	88	29.32
PARKER	34C	PARKER ROAD	100' W. OF COHO LANE	200 FT. W. OF DAMON DR	1,308	32	41,856	A - Arterial	A - AC	83	20.93
PARKER	34D	PARKER ROAD	200 FT. W. OF DAMON DR	NOBLE LN	1,890	32	60,480	A - Arterial	A - AC	52	7.94
PARKER	34E	PARKER ROAD	NOBLE LN	SOLAMO RD	757	49	37,093	A - Arterial	A - AC	66	12.79
PARKSI	2319	PARKSIDE COURT	FAILING STREET	CUL-DE-SAC	546	34	18,564	R - Residential/Local	O - AC/AC	67	22.29
PARKVI	1387	PARKVIEW CT.	RIDGEBROOK DR.	DEAD END	483	25	12,075	R - Residential/Local	A - AC	80	30.72
PARKVI	2394	PARKVIEW TERRACE	ROSE PARK DRIVE	HORTON ROAD	346	33	11,418	R - Residential/Local	A - AC	87	30.36
PAULIN	3320	PAULINE LANE	PONDEROSA LOOP	COEUR D'ALENE DRIVE	243	26	6,318	R - Residential/Local	A - AC	83	27.91
PEREGR	2416	PEREGRINE COURT	HORTON ROAD	CUL-DE-SAC	627	30	18,810	R - Residential/Local	A - AC	79	29.76
PERRIN	2337	PERRIN STREET	HOLMES STREET	CUSHMAN DRIVE	267	22	5,874	R - Residential/Local	O - AC/AC	81	36.3
PERRIN	2337A	PERRIN STREET	CUSHMAN DRIVE	LEWIS STREET	526	29	15,254	R - Residential/Local	O - AC/AC	79	29.29
PERRIN	2337B	PERRIN STREET	LEWIS STREET	CUL-DE-SAC	347	22	7,634	R - Residential/Local	A - AC	66	18.94
PIMLIC	205	PIMLICO DRIVE	WILLAMETTE DRIVE	SANTA ANITA DRIVE	4,377	34	148,818	C - Collector	A - AC	85	18.03
PINEST	3360	PINE STREET	SUNSET AVENUE	MAPLE STREET	360	18	6,480	R - Residential/Local	A - AC	9	0
PINTO	2386	PINTO COURT	CHURCHILL DOWNS DRIVE	CUL-DE-SAC	243	29	7,047	R - Residential/Local	A - AC	71	22.85
POLOCT	1315	POLO COURT	BELLEVUE WAY	CUL-DE-SAC	154	29	4,466	R - Residential/Local	A - AC	79	25.35
PONDER	3323	PONDERAY DRIVE	SALAMO ROAD	WILD ROSE LOOP	1,642	29	47,618	R - Residential/Local	A - AC	71	21.84
PONDER	3321	PONDEROSA LOOP	COEUR D'ALENE DRIVE #3500	COEUR D'ALENE DRIVE #3400	1,274	26	33,124	R - Residential/Local	A - AC	85	29.16
PONYCT	2371	PONY COURT	APPALOOSA WAY	CUL-DE-SAC	228	24	5,472	R - Residential/Local	A - AC	53	11.35
POSEID	2409	POSEIDON COURT	APOLLO ROAD	CUL-DE-SAC	434	36	15,624	R - Residential/Local	A - AC	85	29.16
PROSPE	3375	PROSPECT STREET	OREGON CITY BLVD.	DEAD END	1,075	34	36,550	R - Residential/Local	O - AC/AC	79	25.69
QUAILR	3395PR	QUAIL RIDGE CT.	CRESENT DR.	CUL-DE-SAC	839	26	21,814	R - Residential/Local	A - AC	85	29.16
RAINER	2305	RAINIER PLACE	JOLIE POINTE ROAD (W. END)	JOLIE POINTE ROAD (E. END)	1,023	30	30,690	R - Residential/Local	O - AC/AC	89	42.48
RANCHO	4337	RANCHO LOBO COURT	RANCHO LOBO LANE	CUL-DE-SAC	198	37	7,326	R - Residential/Local	A - AC	87	30.49
RANCHO	4336	RANCHO LOBO LANE	OSTMAN ROAD	SWIFT SHORE DRIVE	427	37	15,799	R - Residential/Local	A - AC	83	28.27
RANDAL	2332A	RANDALL STREET	BEGIN PAVE #2455	ATKINSON STREET	358	17	6,086	R - Residential/Local	A - AC	39	4.88
RANDAL	2332B	RANDALL STREET	CAUFIELD STREET	DAVENPORT STREET	259	23	5,957	R - Residential/Local	O - AC/AC	80	30.67

Street ID	Section ID	Street Name	From	To	Length	Width	Area	Functional Class	Surface Type	Current PCI	Remaining Life
RAWHID	1306	RAWHIDE CT.	CARRIAGE WAY	CUL-DE-SAC	350	30	10,500	R - Residential/Local	A - AC	86	29.77
RAWHID	1302	RAWHIDE STREET	CARRIAGE WAY	WILDWOOD DRIVE	549	28	15,372	R - Residential/Local	A - AC	77	24.08
REGENC	4333	REGENCY STREET	BEXHILL STREET	CUL-DE-SAC	566	36	20,376	R - Residential/Local	A - AC	80	26.41
REMING	3306	REMINGTON DRIVE	FALCON DRIVE	TANNLER DRIVE	645	29	18,705	R - Residential/Local	A - AC	77	27.91
REMING	3306B	REMINGTON DRIVE	TANNLER DRIVE	HASKINS ROAD	920	26	23,920	R - Residential/Local	A - AC	61	13.17
REMING	3306C	REMINGTON DRIVE	HASKINS ROAD	SALAMO RD	690	30	20,700	R - Residential/Local	A - AC	80	29.19
RENAIS	2424	RENAISSANCE CT.	SUMMIT ST.	CUL-DE-SAC	334	29	9,686	R - Residential/Local	A - AC	76	26.26
RIDDER	4317	RIDDER LANE	NOLAN LANE	WEST DEAD END	224	20	4,480	R - Residential/Local	A - AC	48	8.78
RIDGEC	3416	RIDGE COURT	RIDGE LANE	CUL DE SAC	250	26	6,500	R - Residential/Local	A - AC	83	32.39
RIDGEL	3370A	RIDGE LANE	IRELAND LN	SUMMIT DR	1,763	29	51,127	R - Residential/Local	A - AC	82	26.78
RIDGEL	3370B	RIDGE LANE	WILD ROSE DR	END OF PAVEMENT	513	26	13,338	R - Residential/Local	A - AC	84	33.88
RIDGEB	1346	RIDGEBROOK DRIVE	SUNCREST DRIVE	SUNCREST	1,180	29	34,220	R - Residential/Local	A - AC	77	27.31
RIDGE	1352	RIDGEWOOD WAY	OLD RIVER DRIVE	CEDAROAK DRIVE	1,069	19	20,311	R - Residential/Local	A - AC	36	3.55
RIVERE	1339	RIVER EDGE CT.	RIVER WOODS PLACE	CUL-DE-SAC	134	38	5,092	R - Residential/Local	A - AC	78	24.77
RIVERE	1342	RIVER EDGE LANE	RIVER WOODS PLACE	CUL-DE-SAC	422	45	18,990	R - Residential/Local	A - AC	79	25.41
RIVERH	4325	RIVER HEIGHTS CIRCLE	#960 DOLLAR STREET	#751 DOLLAR STREET	1,594	32	51,008	R - Residential/Local	A - AC	69	20.66
RIVERS	2005	RIVER STREET	DEAD END (W. END)	HOLLY STREET (E. END)	2,572	21	54,012	O - Other	O - AC/AC	89	35.5
RIVERV	304	RIVER VIEW AVENUE	SUNSET AVENUE	TUMWATER STREET	295	22	6,490	C - Collector	C - AC/PCC	70	15.25
RIVERV	3341	RIVER VIEW AVENUE	TUMWATER STREET	LONG STREET (DEAD END)	918	25	22,950	R - Residential/Local	O - AC/AC	79	26.03
RIVERV	3332	RIVER VIEW DRIVE	SUNSET AVENUE	FAIRHAVEN DRIVE	1,622	35	56,770	R - Residential/Local	A - AC	59	14.69
RIVERW	1341	RIVER WOODS PLACE	OLD RIVER DRIVE	RIVER EDGE LANE	205	32	6,560	R - Residential/Local	A - AC	83	27.96
RIVERK	3339	RIVERKNOLL COURT	RIVERKNOLL WAY	CUL-DE-SAC	704	29	20,416	R - Residential/Local	A - AC	80	25.99
RIVERK	3340	RIVERKNOLL WAY	BARRINGTON DRIVE	BEACON HILL DRIVE	1,655	30	49,650	R - Residential/Local	A - AC	56	12.52
RIVIER	2312	RIVIERA CT.	TULANE STREET	CUL-DE-SAC	215	31	6,665	R - Residential/Local	A - AC	37	3.96
ROBERT	2339	ROBERT MOORE STREET	LEWIS STREET	BOLTON STREET	407	20	8,140	R - Residential/Local	A - AC	78	25.51
ROBIN	1344	ROBINVIEW DRIVE	OLD RIVER DRIVE	CALAROGA DRIVE	627	20	12,540	R - Residential/Local	A - AC	14	0
ROBINW	1359	ROBINWOOD WAY	UPPER MIDHILL DRIVE	WILLAMETTE DRIVE	843	18	15,174	R - Residential/Local	A - AC	18	0
ROCKRI	3331	ROCKRIDGE DRIVE	RIVER VIEW DRIVE	IMPERIAL DRIVE	525	35	18,375	R - Residential/Local	A - AC	64	17.7
ROGUE	3810	ROGUE WAY	HASKINS RD	REMINGTON DRIVE	760	30	22,800	R - Residential/Local	A - AC	86	36.53
ROSECT	1334	ROSE COURT	FAIRVIEW WAY	CUL-DE-SAC	374	34	12,716	R - Residential/Local	A - AC	83	27.96

Street ID	Section ID	Street Name	From	To	Length	Width	Area	Functional Class	Surface Type	Current PCI	Remaining Life
ROSELN	3387	ROSE LANE	PAULINE LANE	PONDEROSA LOOP	447	13	5,811	R - Residential/Local	A - AC	88	30.98
ROSEWY	1333	ROSE WAY	WALLING WAY	FAIRVIEW WAY	464	19	8,816	R - Residential/Local	O - AC/AC	70	22.03
ROSEMA	3380	ROSEMARIE DRIVE	DE BOK ROAD	DEAD END	728	36	26,208	R - Residential/Local	A - AC	66	17.7
ROSEMR	2426	ROSEMONT RIDGE COURT	ZEUS DR	CUL DE SAC	207	29	6,003	R - Residential/Local	A - AC	89	40
ROSEMO	23A	ROSEMONT ROAD	SUMMIT STREET	MILES DR. ACCESS	2,755	26	71,630	A - Arterial	A - AC	28	0.82
ROSEMO	23B	ROSEMONT ROAD	MILES DR. ACCESS	200' W. OF HOUSE #1270	768	20	15,360	A - Arterial	O - AC/AC	39	3.59
ROSEMO	23C	ROSEMONT ROAD	200' W. OF HOUSE #1270	SANTA ANITA DRIVE	870	21	18,270	A - Arterial	O - AC/AC	89	27.73
ROSEMO	23C1	ROSEMONT ROAD	SANTA ANITA	640 FT. WEST OF SANTA ANITA	640	43	27,520	A - Arterial	A - AC	48	6.51
ROSEMO	23D	ROSEMONT ROAD	640 FT. WEST OF SANTA ANITA DR	HOUSE #1165(Top of hill, west)	500	22	11,000	A - Arterial	A - AC	40	3.88
ROSEPA	2393	ROSEPAK COURT	ROSEPAK DRIVE	CUL-DE-SAC	406	29	11,774	R - Residential/Local	A - AC	88	30.93
ROSEPA	2392	ROSEPAK DRIVE	SHANNON LANE	CUL-DE-SAC	1,693	33	55,869	R - Residential/Local	A - AC	79	25.35
ROXBCT	3415	ROXBURY COURT	ROXBURY DRIVE	CUL DE SAC	150	26	3,900	R - Residential/Local	A - AC	79	27.18
ROXBDR	3414A	ROXBURY DRIVE	WEST DEAD END	WILD ROSE DR	620	30	18,600	R - Residential/Local	A - AC	82	30.98
ROXBDR	3414B	ROXBURY DRIVE	WILD ROSE DR	DEAD END EAST	785	30	23,550	R - Residential/Local	A - AC	73	21.03
ROYALC	4306	ROYAL COURT	OSTMAN ROAD	CUL-DE-SAC	384	36	13,824	R - Residential/Local	A - AC	77	24.5
RUIDOS	2356	RUIDOSO COURT	CLUBHOUSE CIRCLE	CUL-DE-SAC	184	34	6,256	R - Residential/Local	A - AC	64	17.79
RYANCT	4302	RYAN COURT	JOHNSON ROAD	CUL-DE-SAC	480	36	17,280	R - Residential/Local	A - AC	71	21.43
SABOLA	3813A	SABO LANE	BEACON HILL LANE	HOUSE # 3016	427	30	12,810	R - Residential/Local	A - AC	72	19.59
SABOLA	3813B	SABO LANE	HOUSE #3016	CUL DE SAC	1,691	30	50,730	R - Residential/Local	A - AC	84	32.57
SADDLE	2374	SADDLE COURT	PALOMINO WAY (2498)	PALOMINO WAY (2404)	964	24	23,136	R - Residential/Local	A - AC	31	1.91
STMORI	3804	SAINT MORITZ LOOP	BLAND CIRCLE	BLAND CIRCLE	445	17	7,565	R - Residential/Local	A - AC	79	26.44
SALAMO	31A	SALAMO ROAD	10TH STREET	380' S. OF BARRINGTON DRIVE	2,416	32	77,312	A - Arterial	O - AC/AC	77	20.77
SALAMO	31B	SALAMO ROAD	380' S. OF BARRINGTON DRIVE	VISTA RIDGE DR	1,954	25	48,850	A - Arterial	O - AC/AC	18	0
SALAMO	31C	SALAMO ROAD	VISTA RIDGE DR	DAY ROAD	2,863	54	154,602	A - Arterial	A - AC	39	3.63
SALAMO	31D	SALAMO ROAD	DAY RD	ROSEMONT RD	2,517	46	115,782	A - Arterial	A - AC	64	12.04
SANTAA	24A	SANTA ANITA DRIVE	ROSEMONT ROAD	430' S. OF HORTON RD	585	36	21,060	A - Arterial	O - AC/AC	63	12.59
SANTAA	24B	SANTA ANITA DRIVE	430' S. OF HORTON RD	HORTON RD	430	36	15,480	A - Arterial	A - AC	93	30.99
SANTAA	24C	SANTA ANITA DRIVE	HORTON ROAD	HIDDEN SPRINGS ROAD	2,074	42	87,108	A - Arterial	A - AC	90	23.75

Street ID	Section ID	Street Name	From	To	Length	Width	Area	Functional Class	Surface Type	Current PCI	Remaining Life
SERANG	2417	SERANGO COURT	SERANGO DRIVE	CUL-DE-SAC	531	36	19,116	R - Residential/Local	A - AC	86	29.77
SERANG	2418	SERANGO DRIVE	APOLLO ROAD	HORTON ROAD	1,311	36	47,196	R - Residential/Local	A - AC	84	28.54
SHADY	1336	SHADY HOLLOW WAY	WILLAMETTE DRIVE	ARBOR DRIVE	964	16	15,424	R - Residential/Local	A - AC	15	0
SHANNO	2008	SHANNON LANE	21510 SHANNON LANE	ROSEMONT ROAD	886	35	31,010	O - Other	A - AC	41	5.27
SHANNO	2012	SHANNON PLACE	ZEUS DRIVE	CUL-DE-SAC	216	30	6,480	R - Residential/Local	A - AC	81	30.65
SHERRI	4312	SHERRI COURT	19TH STREET	2ND CUL-DE-SAC	510	34	17,340	R - Residential/Local	A - AC	26	0.39
SHETLA	2375	SHETLAND PLACE	APPALOOSA WAY	CUL-DE-SAC	341	24	8,184	R - Residential/Local	A - AC	51	10.04
SHORTS	4315	SHORT STREET	16TH STREET	19TH STREET	954	40	38,160	R - Residential/Local	A - AC	39	4.7
SIMPSON	305	SIMPSON STREET	TUMWATER STREET	LONG STREET	500	22	11,000	C - Collector	O - AC/AC	70	17.29
SINCLA	2344	SINCLAIR STREET	DEAD END	CUL-DE-SAC	728	17	12,376	R - Residential/Local	O - AC/AC	89	35.5
SKYE	1369	SKYE CT.	SKYE PARKWAY	CUL-DE-SAC	132	28	3,696	R - Residential/Local	A - AC	69	21.44
SKYEPA	1009A	SKYE PARKWAY	HILLSIDE DRIVE	LEIGH COURT	1,184	24	28,416	O - Other	A - AC	63	16.31
SKYEPA	1009B	SKYE PARKWAY	LEIGH COURT	MARYLHURST DRIVE	1,824	28	51,072	O - Other	A - AC	36	3.69
SKYLIN	2376	SKYLINE CIRCLE	SKYLINE DRIVE	CUL-DE-SAC	287	17	4,879	R - Residential/Local	A - AC	18	0
SKYLIN	2383	SKYLINE DRIVE	SUMMIT STREET	NELCO CIRCLE	309	36	11,124	R - Residential/Local	A - AC	82	27.27
SKYLIN	25A	SKYLINE DRIVE	WEST A STREET	HOUSE #5833	1,534	25	38,350	A - Arterial	A - AC	58	10.38
SKYLIN	25B	SKYLINE DRIVE	HOUSE #5833	CLARK STREET	953	26	24,778	A - Arterial	A - AC	23	0
SKYLIN	25C	SKYLINE DRIVE	CLARK STREET	WOODWINDS COURT	1,169	25	29,225	A - Arterial	A - AC	21	0
SKYLIN	25D	SKYLINE DRIVE	WOODWINDS COURT	SUMMIT STREET	548	44	24,112	A - Arterial	O - AC/AC	72	16.33
SNIDOW	4335	SNIDOW DRIVE	OSTMAN ROAD	WILLAMETTE FALLS DRIVE	751	36	27,036	R - Residential/Local	A - AC	80	26.41
SORREL	2363	SORREL WAY	PIMLICO DRIVE	PALOMINO WAY	477	30	14,310	R - Residential/Local	A - AC	86	29.77
SOUTH	3814	SOUTH HAMPTON COURT	FAIRVIEW DR	CUL DE SAC	340	29	9,860	R - Residential/Local	A - AC	77	24.32
SOUTH	3390	SOUTH RD.	COEUR D'ALENE DR.	VISTA RIDGE DR.	290	29	8,410	R - Residential/Local	A - AC	80	30.72
SOUTH	3329	SOUTHSLOPE WAY	NORFOLK STREET	CUL-DE-SAC	1,156	29	33,524	R - Residential/Local	A - AC	67	19.6
SPRING	1388A	SPRING RIDGE DR.	SUNCREST DR	HOUSE #19795	683	29	19,807	R - Residential/Local	A - AC	89	31.47
SPRING	1388B	SPRING RIDGE DR.	HOUSE #19795	BENNINGTON CT	360	29	10,440	R - Residential/Local	A - AC	81	31.05
SPRING	3330	SPRING ROCK CIRCLE	RIVER VIEW DRIVE	SUNSET AVENUE	527	35	18,445	R - Residential/Local	A - AC	74	22.59
STEAM	1353	STEAMBOAT WAY	NIXON AVENUE	ELMRAN AVENUE	513	17	8,721	R - Residential/Local	A - AC	17	0
STONE	3818	STONEGATE LN	BEACON HILL DR	LANDIS ST	353	25	8,825	R - Residential/Local	A - AC	90	31.98
STONE	1373	STONEHAVEN COURT	STONEHAVEN DRIVE	CUL-DE-SAC	592	28	16,576	R - Residential/Local	A - AC	72	23.81

Street ID	Section ID	Street Name	From	To	Length	Width	Area	Functional Class	Surface Type	Current PCI	Remaining Life
STONEH	1013	STONEHAVEN DRIVE	TROON DRIVE	SKYE PARKWAY	2,104	28	58,912	O - Other	A - AC	57	13.31
SUMMER	3404	SUMMER RUN DRIVE	WHITE SALMON CT	PARKER RD	300	28	8,400	R - Residential/Local	A - AC	78	27.45
SUMMER	3808	SUMMERLIN DRIVE	BLANKENSHIP ROAD	ROUNDAABOUT	530	26	13,780	R - Residential/Local	A - AC	61	13.17
SUMMIT	2384	SUMMIT PLACE	SUMMIT STREET	DEAD END	477	36	17,172	R - Residential/Local	A - AC	63	16.96
SUMMIT	201A	SUMMIT STREET	SKYLINE DRIVE	100' S. OF RENAISSANCE CT	650	43	27,950	C - Collector	A - AC	8	0
SUMMIT	201B	SUMMIT STREET	PIMLICO DRIVE	175' N. OF HORTON RD	1,835	44	80,740	C - Collector	A - AC	49	5.36
SUMMIT	201C	SUMMIT STREET	175' N. OF HORTON RD	100' S. OF RENAISSANCE CT	680	38	25,840	C - Collector	A - AC	58	7.67
SUMMIT	22	SUMMIT STREET	SKYLINE DRIVE	ROSEMONT ROAD	616	44	27,104	A - Arterial	A - AC	43	4.9
SUMMIT	32	SUMMIT STREET	OXFORD STREET	ROSEMONT ROAD	1,652	27	44,604	A - Arterial	O - AC/AC	74	16.72
SUNCIR	1321	SUN CIRCLE	CARRIAGE WAY (2010)	CARRIAGE WAY (1890)	1,700	36	61,200	R - Residential/Local	O - AC/AC	89	42.33
SUNBRE	3805	SUNBREAK LANE	CRESTVIEW DR	DEAD END (HOUSE #2976)	544	26	14,144	R - Residential/Local	A - AC	80	27.77
SUNBUR	1308	SUNBURST TERRACE	SUNCREST DRIVE	DERBY STREET	1,378	36	49,608	R - Residential/Local	A - AC	56	12.86
SUNCRE	109A	SUNCREST DRIVE	HIDDEN SPRINGS ROAD	CARRIAGE WAY	2,160	37	79,920	C - Collector	O - AC/AC	94	39.42
SUNCRE	109B	SUNCREST DRIVE	CARRIAGE WAY	#19295 SUNCREST DRIVE	1,257	22	27,654	C - Collector	A - AC	28	0.52
SUNCRE	109C	SUNCREST DRIVE	#19295 SUNCREST DRIVE	HILLCREST DRIVE	604	22	13,288	C - Collector	O - AC/AC	59	11.19
SUNCRE	2341	SUNCREST DRIVE	HIDDEN SPRINGS ROAD	DEAD END	447	34	15,198	R - Residential/Local	A - AC	81	26.63
SUNRAY	1318	SUNRAY CT.	SUNCREST DRIVE	CUL-DE-SAC	385	28	10,780	R - Residential/Local	A - AC	63	17.12
SUNSET	3383A	SUNSET AVENUE	PARKER ROAD	HOUSE #2785	316	26	8,216	R - Residential/Local	O - AC/AC	92	48.54
SUNSET	3383B	SUNSET AVENUE	HOUSE #2785	CORNWALL STREET	425	29	12,325	R - Residential/Local	A - AC	4	0
SUNSET	35A	SUNSET AVENUE	CORNWALL STREET	NORFOLK STREET	815	26	21,190	A - Arterial	O - AC/AC	52	7.98
SUNSET	35B	SUNSET AVENUE	NORFOLK STREET	RIVER VIEW AVENUE	1,124	26	29,224	A - Arterial	C - AC/PCC	41	4.25
SUNSET	35C	SUNSET AVENUE	RIVER VIEW DRIVE (UPPER)	WILLAMETTE FALLS DRIVE	2,457	26	63,882	A - Arterial	O - AC/AC	59	10.84
SUNSET	3357	SUNSET COURT	DEAD END	SUNSET AVENUE	160	22	3,520	R - Residential/Local	A - AC	83	27.96
SURREY	1310	SURREY LANE	BELLEVUE WAY	CUL-DE-SAC	710	29	20,590	R - Residential/Local	A - AC	86	29.76
SUSSEX	3345A	SUSSEX STREET	FAIRHAVEN DRIVE	SUNSET AVENUE	994	33	32,802	R - Residential/Local	A - AC	13	0
SUSSEX	3345B	SUSSEX STREET	SUNSET AVENUE	LANCASTER STREET	492	20	9,840	R - Residential/Local	A - AC	9	0
SUSSEX	3345C	SUSSEX STREET	LANCASTER STREET	OXFORD STREET	751	25	18,775	R - Residential/Local	A - AC	18	0

Street ID	Section ID	Street Name	From	To	Length	Width	Area	Functional Class	Surface Type	Current PCI	Remaining Life
SWIFTS	4339	SWIFT SHORE CIRCLE	#25155 SWIFT SHORE DRIVE	#25450 SWIFT SHORE DRIVE	786	36	28,296	R - Residential/Local	A - AC	86	29.98
SWIFTS	4338	SWIFT SHORE DRIVE	WILLAMETTE FALLS DRIVE	DEAD END	1,204	36	43,344	R - Residential/Local	A - AC	82	27.66
SYLVAN	1383	SYLVAN DRIVE	MARYLHURST DRIVE	HILLCREST DRIVE	1,268	28	35,504	R - Residential/Local	A - AC	61	14.84
TACK	2404	TACK COURT	CLUBHOUSE DRIVE	CUL-DE-SAC	462	26	12,012	R - Residential/Local	A - AC	72	20.98
TAMARI	3302	TAMARISK DRIVE	DE BOK ROAD	DEAD END	705	36	25,380	R - Residential/Local	A - AC	74	25.47
TANNER	3398PR	TANNER CREEK LN.	BEACON HILL DR.	CUL-DE-SAC	507	25	12,675	R - Residential/Local	A - AC	80	25.99
TANNLE	307A	TANNLER DRIVE	BLANKENSHIP ROAD	GREENE STREET	1,371	44	60,324	C - Collector	A - AC	22	0
TANNLE	307B	TANNLER DRIVE	GREENE STREET	REMINGTON DRIVE	685	41	28,085	C - Collector	A - AC	66	10.71
TANNLE	307C	TANNLER DRIVE	REMINGTON DRIVE	BLAND CIRCLE	585	42	24,570	C - Collector	A - AC	71	11.98
TAYLCT	3400	TAYLOR COURT	TAYLOR DRIVE	CUL-DE-SAC	181	26	4,706	R - Residential/Local	A - AC	81	32.09
TAYLOR	3401	TAYLOR DRIVE	BLAND CIR	DEAD END	760	26	19,760	R - Residential/Local	A - AC	79	29.37
TERRAV	1355	TERRA VISTA CT.	CEDAROAK DRIVE	CUL-DE-SAC	206	28	5,768	R - Residential/Local	A - AC	51	9.92
TERRAC	2378	TERRACE DRIVE	WEBB STREET	WEST A STREET	817	18	14,706	R - Residential/Local	O - AC/AC	88	42.86
TERRIT	4341	TERRITORIAL DRIVE	MILL STREET	DEAD END	1,184	21	24,864	R - Residential/Local	A - AC	49	8.12
TIMOTH	4322	TIMOTHY LANE	13TH STREET	CUL-DE-SAC	607	36	21,852	R - Residential/Local	A - AC	23	0
TIPPER	3313	TIPPERARY COURT	KILLARNEY DRIVE	CUL-DE-SAC	371	36	13,356	R - Residential/Local	A - AC	53	11.45
TOMPKI	2429	TOMPKINS COURT	TOMPKIN ST	PRIVATE DRIVE	182	21	3,822	R - Residential/Local	A - AC	73	22.07
TOMKIN	2334	TOMPKINS STREET	CAUFIELD STREET	DEAD END	514	22	11,308	R - Residential/Local	A - AC	29	1.24
TOMPKI	2359	TOMPKINS STREET (LOWER)	FAILING STREET	DEAD END	488	12	5,856	R - Residential/Local	A - AC	16	0
TOPVIE	1324	TOP VIEW CT.	WILDERNESS DRIVE	CUL-DE-SAC	244	34	8,296	R - Residential/Local	A - AC	77	28.18
TRILLI	1008	TRILLIUM DRIVE	CEDAROAK DRIVE	OLD RIVER DRIVE	2,314	18	41,652	O - Other	O - AC/AC	74	26.07
TROON	1010B	TROON DRIVE	MARYLHURST	SKYE PARKWAY	1,621	28	45,388	O - Other	A - AC	66	19.02
TROYCT	3301	TROY COURT	TAMARISK DRIVE	CUL-DE-SAC	531	36	19,116	R - Residential/Local	A - AC	80	26.41
TUALAT	46	TUALATIN AVENUE	TUALATIN RIVER BRIDGE	12TH STREET	883	24	21,192	A - Arterial	A - AC	20	0
TULANE	2311A	TULANE STREET	DILLOW DRIVE	#2487 TULANE STREET	473	20	9,460	R - Residential/Local	A - AC	19	0
TULANE	2311B	TULANE STREET	#2487 TULANE STREET	LARSON AVENUE	1,120	34	38,080	R - Residential/Local	A - AC	18	0
TUMWAT	309	TUMWATER STREET	SIMPSON ST	RIVER VIEW AVENUE	436	20	8,720	C - Collector	O - AC/AC	73	17.64
UMPQUA	3802	UMPQUA LANE	KENSINGTON CT	BLAND CIRCLE	376	30	11,280	R - Residential/Local	A - AC	76	24.25
UNDERH	2366	UNDERHILL LANE	WILLAMETTE DRIVE	DEAD END	287	20	5,740	R - Residential/Local	A - AC	77	24.14
UPPERM	1366A	UPPER MIDHILL DRIVE	MARYLHURST DRIVE	ARBOR DRIVE	1,782	16	28,512	R - Residential/Local	A - AC	42	6.23

Street ID	Section ID	Street Name	From	To	Length	Width	Area	Functional Class	Surface Type	Current PCI	Remaining Life
UPPERM	1366B	UPPER MIDHILL DRIVE	ARBOR DRIVE	DEAD END	899	36	32,364	R - Residential/Local	A - AC	47	8.03
WILLAM	4003	UPPER WILLAMETTE FALLS DRIVE	10TH STREET	6TH STREET	1,805	19	34,295	O - Other	A - AC	8	0
VALLEY	1378	VALLEY COURT	VALLEY VIEW DRIVE	CUL-DE-SAC	389	34	13,226	R - Residential/Local	A - AC	38	4.55
VALLEY	1011A	VALLEY VIEW DRIVE	HILLCREST DRIVE	SUNCREST DRIVE	1,279	28	35,812	O - Other	A - AC	34	2.95
VALLEY	1011B	VALLEY VIEW DRIVE	SUNCREST DRIVE	#1755 VALLEY VIEW	662	20	13,240	O - Other	A - AC	20	0
VALLEY	1011C	VALLEY VIEW DRIVE	#1755 VALLEY VIEW DRIVE	MARYLHURST DRIVE	440	37	16,280	O - Other	A - AC	80	25.99
VIEWDR	1356	VIEW DRIVE	MARYLHURST DRIVE (19145)	MARYLHURST DRIVE (19888)	2,063	22	45,386	R - Residential/Local	A - AC	68	20.32
VIEWPO	3420	VIEWPOINT ROAD	HOODVIEW DRIVE	DEAD END (HAMMERHEAD)	492	26	12,792	R - Residential/Local	A - AC	81	29.65
VILLAG	3308	VILLAGE PARK PLACE	DE BOK ROAD	CUL-DE-SAC	514	36	18,504	R - Residential/Local	A - AC	76	23.86
VIRGIN	3316	VIRIGINIA LANE	BLANKENSHIP ROAD	DEAD END	565	35	19,775	R - Residential/Local	A - AC	73	21.96
VISTAC	1394	VISTA COURT	FAIRVIEW WAY	CUL-DE-SAC	603	24	14,472	R - Residential/Local	A - AC	77	26.79
VISTAR	3389	VISTA RIDGE DR.	SALAMO RD.	SOUTH RD.	1,268	29	36,772	R - Residential/Local	A - AC	74	24.29
VOLPPS	4004A	VOLPP STREET	TUALATIN AVENUE	12TH STREET	942	24	22,608	O - Other	A - AC	63	16.74
VOLPPS	4004B	VOLPP STREET	12TH ST	HOUSE #2100	868	22	19,096	O - Other	A - AC	86	29.98
VOLPPS	4004C	VOLPP STREET	HOUSE #2100	PRIVATE ROAD	1,316	20	26,320	O - Other	A - AC	32	2.27
WAKERO	3367	WAKEROBIN COURT	WOODWINDS COURT	CUL-DE-SAC	341	36	12,276	R - Residential/Local	A - AC	86	29.82
WALDEN	3353	WALDEN STREET	LONG STREET	RIVER VIEW AVENUE	372	18	6,696	R - Residential/Local	O - AC/AC	78	22.74
WALLIN	1328	WALLING CIRCLE	WILLAMETTE DRIVE (S. END)	WILLAMETTE DRIVE (N. END)	1,040	19	19,760	R - Residential/Local	O - AC/AC	74	26.07
WALLIN	1005A	WALLING WAY	WILLAMETTE DRIVE	ROSE WAY	420	20	8,400	O - Other	A - AC	13	0
WALLIN	1005B	WALLING WAY	ROSE WAY	OLD RIVER DRIVE	683	20	13,660	O - Other	A - AC	34	2.86
WALNUT	3363	WALNUT STREET	SUNSET AVENUE	MAPLE ST	576	23	13,248	R - Residential/Local	A - AC	67	19.67
WALNUT	3363A	WALNUT STREET	MAPLE ST	DEAD END	249	27	6,723	R - Residential/Local	A - AC	90	32.04
WARWIC	3346A	WARWICK STREET	NORFOLK ST	SUSSEX ST	350	25	8,750	R - Residential/Local	A - AC	9	0
WARWIC	3346B	WARWICK STREET	SUSSEX ST	DEAD END	915	25	22,875	R - Residential/Local	A - AC	7	0
WEATHE	3806	WEATHERHILL ROAD	BLAND CIRCLE	SALAMO RD	2,220	20	44,400	R - Residential/Local	A - AC	34	3.15
WEBBST	2367	WEBB STREET	TERRACE DRIVE	WILLAMETTE DRIVE	909	16	14,544	R - Residential/Local	A - AC	63	16.85
WELLIN	3336	WELLINGTON COURT	WELLINGTON DRIVE	CUL-DE-SAC	469	25	11,725	R - Residential/Local	A - AC	78	29.14
WELLIN	3337	WELLINGTON DRIVE	BEACON HILL DRIVE	FAIRHAVEN DRIVE	1,835	33	60,555	R - Residential/Local	A - AC	64	17.08

Street ID	Section ID	Street Name	From	To	Length	Width	Area	Functional Class	Surface Type	Current PCI	Remaining Life
WENDYC	4329	WENDY COURT	RIVER HEIGHTS CIRCLE	CUL-DE-SAC	512	30	15,360	R - Residential/Local	A - AC	76	27.24
WESTA	21A	WEST A STREET	WILLAMETTE FALLS DRIVE	SKYLINE DRIVE	1,885	40	75,400	A - Arterial	A - AC	57	10.48
WESTA	21B	WEST A STREET	SKYLINE DRIVE	WILLAMETTE DRIVE	2,763	40	110,520	A - Arterial	A - AC	43	5.09
WESTBE	1391	WESTBERRY CT.	BENNINGTON CT.	CUL-DE-SAC	144	29	4,176	R - Residential/Local	A - AC	89	31.47
WHEELE	2428	WHEELER LANE	GREGORY CT	DEAD END	186	25	4,650	R - Residential/Local	A - AC	92	32.87
WHITEC	2303	WHITE CLOUD CIRCLE	MOHAWK WAY (W. END)	MOHAWK WAY (E. END)	1,527	28	42,756	R - Residential/Local	A - AC	37	4.11
WHITES	3403	WHITE SALMON CT	COHO LANE	CUL DE SAC (30' RADIUS)	626	28	17,528	R - Residential/Local	A - AC	83	33.76
WILDDR	3408A	WILD ROSE DRIVE	WILD ROSE LP	PARKER RD	462	26	12,012	R - Residential/Local	A - AC	78	25.42
WILDDR	3408B	WILD ROSE DRIVE	PARKER RD	ROSEMONT RD	1,090	30	32,700	R - Residential/Local	A - AC	81	29.65
WILDLP	3412	WILD ROSE LOOP	DEAD END 200 FT.WEST OF DAWSON	WILD ROSE WAY (NORTH INT)	1,384	26	35,984	R - Residential/Local	A - AC	78	25.42
WILDWY	3413	WILD ROSE WAY	WILD ROSE LOOP	WILD ROSE LOOP	418	26	10,868	R - Residential/Local	A - AC	79	26.57
WILDER	1325	WILDERNESS DRIVE	19401 HIDDEN SPRINGS ROAD	HIDDEN SPRINGS ROAD	2,424	34	82,416	R - Residential/Local	A - AC	75	26.17
WILDWO	1001A	WILDWOOD DRIVE	CARRIAGE WAY	#19750 WILDWOOD DRIVE	2,741	25	68,525	O - Other	A - AC	67	19.87
WILDWO	1001B	WILDWOOD DRIVE	#19750 WILDWOOD DRIVE	HIDDEN SPRINGS ROAD	1,948	27	52,596	O - Other	A - AC	44	6.99
WILDPL	1301	WILDWOOD PLACE	WILDWOOD DRIVE	CUL-DE-SAC	217	25	5,425	R - Residential/Local	A - AC	84	28.54
WILLAM	41	WILLAMETTE DRIVE	WEST "A"	1-205 OVERPASS	1,200	52	62,400	A - Arterial	A - AC	66	13.14
WILLAM	42A	WILLAMETTE FALLS DRIVE	BORLAND BRIDGE	14TH STREET	5,968	24	143,232	A - Arterial	O - AC/AC	67	14.11
WILLAM	42B	WILLAMETTE FALLS DRIVE	14TH STREET	12TH STREET	765	42	32,130	A - Arterial	O - AC/AC	72	16.81
WILLAM	42C	WILLAMETTE FALLS DRIVE	12TH STREET	10TH STREET	840	42	35,280	A - Arterial	O - AC/AC	67	14.11
WILLAM	42D	WILLAMETTE FALLS DRIVE	10TH STREET	WEST "A"	11,852	24	284,448	A - Arterial	C - AC/PCC	73	17.54
WILLAM	42E	WILLAMETTE FALLS DRIVE	WEST "A"	BROADWAY STREET	315	52	16,380	A - Arterial	O - AC/AC	57	10.18
WILLAM	2317	WILLAMETTE VIEW CT.	DILLOW DRIVE	CUL-DE-SAC	869	34	29,546	R - Residential/Local	O - AC/AC	78	30.87
WILLSO	2358	WILLSON STRET	BEGINNING PAVEMENT	WILLAMETTE DRIVE	254	21	3,334	R - Residential/Local	O - AC/AC	66	21

Street ID	Section ID	Street Name	From	To	Length	Width	Area	Functional Class	Surface Type	Current PCI	Remaining Life
WINDHA	2011A	WINDHAM OAKS	JOLIE POINT RD	HOUSE #2115 DEAD END	620	28	17,360	R - Residential/Local	A - AC	81	31.13
WINDOR	3376	WINDSOR TERRACE	#5480 CLARK STREET	#5201 CLARK STREET	2,095	36	75,420	R - Residential/Local	O - AC/AC	82	29.93
WINKEL	3824A	WINKEL WAY	DEAD END WEST	MAXFIELD DR	1,034	25	25,850	R - Residential/Local	A - AC	82	25.46
WINKEL	3824B	WINKEL WAY	MAXFIELD DR	BEACON HILL LN	1,756	29	50,924	R - Residential/Local	A - AC	89	37.52
WISTER	3304	WISTERIA COURT	WISTERIA ROAD	CUL-DE-SAC	305	36	10,980	R - Residential/Local	A - AC	65	18.41
WISTER	3305	WISTERIA ROAD	TAMARISK DRIVE	DEAD END	454	36	16,344	R - Residential/Local	A - AC	65	18.41
WOODCT	1377	WOODHAVEN COURT	VALLEY VIEW DRIVE	CUL-DE-SAC	413	36	14,868	R - Residential/Local	A - AC	48	8.58
WOODHI	1360	WOODHILL COURT	LOWER MIDHILL DRIVE	CUL-DE-SAC	247	36	8,892	R - Residential/Local	A - AC	39	4.81
WOODSP	3366	WOODSPRITE COURT	SUMMIT STREET	CUL-DE-SAC	350	36	12,600	R - Residential/Local	A - AC	86	29.82
WOODWI	3368	WOODWINDS COURT	SKYLINE DRIVE	CUL-DE-SAC	451	36	16,236	R - Residential/Local	A - AC	84	28.59
YORKST	3348A	YORK STREET	DEAD END (#2790 YORK STREET)	SUSSEX STREET	854	17	14,518	R - Residential/Local	O - AC/AC	60	14.1
YORKST	3348B	YORK STREET	SUSSEX STREET	EXETER STREET	426	17	7,242	R - Residential/Local	A - AC	65	18.23
ZUESDR	2408	ZEUS DRIVE	APOLLO ROAD	HORTON ROAD	805	36	28,980	R - Residential/Local	A - AC	76	24.89

Appendix F

Sections Selected for Treatment
Current Budget Scenario

Scenarios - Sections Selected for Treatment

Interest: 3.00%

Inflation: 3.00%

Printed: 06/15/2011

Scenario: (2) Current Funding Level

Year	Budget	PM Amt	Year	Budget	PM Amt	Year	Budget	PM Amt
2011	\$150,000	50%	2012	\$150,000	50%	2013	\$150,000	50%
2014	\$150,000	50%	2015	\$150,000	50%			

Street Name	Begin Location	End Location	Street ID	Section ID	FC	Surface	PCI	Cost	Rating	Treatment
Year: 2011										
5TH AVENUE	13TH STREET	12TH STREET	5THAVE	4002B2	O	AC	85	\$1,528	132,195	SLURRY SEAL
8TH AVENUE	DOLLAR STREET	16TH STREET	8THAVE	4353	R	AC/AC	85	\$1,080	137,376	SLURRY SEAL
BLUEGRASS WAY	CARRIAGE WAY	HIDDEN SPRINGS ROAD	BLUEGR	1304	R	AC	73	\$4,368	105,722	SLURRY SEAL
BROADWAY STREET	EASY STREET	WILLAMETTE FALLS DRIVE	BROADW	2006B	O	AC	76	\$7,743	108,203	SLURRY SEAL
BUSE STREET	WEST A STREET	BROADWAY STREET	BUSEST	2360A	R	AC	82	\$524	123,285	SLURRY SEAL
CAUFIELD STREET	WILLAMETTE DRIVE	CUL-DE-SAC	CAUFIE	2328A	R	AC	86	\$4,416	125,005	SLURRY SEAL
CHAPARREL DR.	PONDERAY DR.	CHELAN DR.	CHAPAR	3391	R	AC	88	\$992	131,731	SLURRY SEAL
CHELAN DR.	BELKNAP (3400 BLK.)	DEAD END (3500 BLK.)	CHELAN	3392	R	AC	87	\$9,392	128,256	SLURRY SEAL
CHIPPEWA COURT	FAIRVIEW WAY	CUL-DE-SAC	CHIPPE	1331	R	AC	86	\$1,588	134,396	SLURRY SEAL
COEUR DALENE DRIVE	PONDERAY DRIVE	SOUTH RD.	COEURD	3322A	R	AC	87	\$7,579	128,377	SLURRY SEAL
CRESCENT DRIVE	PONDERAY DRIVE	SABO LN	CRESC	3318	R	AC	87	\$3,689	128,377	SLURRY SEAL
CRESTWOOD CT.	WILDWOOD DRIVE	CUL-DE-SAC	CRESTW	1303	R	AC	84	\$818	131,774	SLURRY SEAL
CRYSTAL TERRACE	SALAMO RD	COEUR D' ALEUE DR	CRYSTA	3100	R	AC	89	\$713	121,957	SLURRY SEAL
DE BOK ROAD	ROSEMARIE DRIVE	MARGERIE STREET	DEBOKR	308C	C	AC/AC	93	\$2,832	126,590	SLURRY SEAL
FAIRVIEW WAY	ROSE WAY	DEAD END	FAIRVI	1332B	R	AC	78	\$3,956	112,261	SLURRY SEAL
HUNTER WAY	BELLEVUE WAY	CARRIAGE WAY (2951)	HUNTER	1316	R	AC	77	\$5,402	107,489	SLURRY SEAL
HUNTER COURT	CARRIAGE WAY	CUL-DE-SAC	HUNTER	1317	R	AC	76	\$1,257	106,526	SLURRY SEAL
IMPERIAL DRIVE	#4203 IMPERIAL DRIVE	SUNSET AVENUE	IMPERI	3006C	O	AC	76	\$9,111	107,763	SLURRY SEAL
KILLARRNEY DRIVE	DE BOK ROAD	MATHENY DRIVE	KILLAR	3003A	O	AC	84	\$3,912	130,932	SLURRY SEAL
LAMPLIGHTER COURT	LARSON AVENUE	CUL-DE-SAC	LAMPLI	2316	R	AC/AC	89	\$1,519	125,017	SLURRY SEAL
MORGAN COURT	BELLEVUE WAY	CUL-DE-SAC	MORGAN	1314	R	AC	85	\$657	133,066	SLURRY SEAL
MUSTANG COURT	SORREL WAY	CUL-DE-SAC	MUSTAN	2362	R	AC	76	\$1,142	104,914	SLURRY SEAL

** - Treatment from Project Selection

Street Name	Begin Location	End Location	Street ID	Section ID	FC	Surface	PCI	Cost	Rating	Treatment
PARKER ROAD	LANCASTER STREET	SUMMER RUN DR	PARKER	34A	A	AC/AC	88	\$1,075	239,919	SLURRY SEAL
PARKSIDE COURT	FAILING STREET	CUL-DE-SAC	PARKSI	2319	R	AC/AC	76	\$2,475	107,293	SLURRY SEAL
PARKVIEW CT.	RIDGEBROOK DR.	DEAD END	PARKVI	1387	R	AC	87	\$1,610	128,256	SLURRY SEAL
PEREGRINE COURT	HORTON ROAD	CUL-DE-SAC	PEREGR	2416	R	AC	87	\$2,508	128,377	SLURRY SEAL
PERRIN STREET	HOLMES STREET	CUSHMAN DRIVE	PERRIN	2337	R	AC/AC	88	\$783	129,253	SLURRY SEAL
PERRIN STREET	LEWIS STREET	CUL-DE-SAC	PERRIN	2337B	R	AC	76	\$1,018	102,554	SLURRY SEAL
RIVER HEIGHTS CIRCLE	#960 DOLLAR STREET	#751 DOLLAR STREET	RIVERH	4325	R	AC	78	\$6,801	104,158	SLURRY SEAL
ROCKRIDGE DRIVE	RIVER VIEW DRIVE	IMPERIAL DRIVE	ROCKRI	3331	R	AC	74	\$2,450	106,879	SLURRY SEAL
RUIDOSO COURT	CLUBHOUSE CIRCLE	CUL-DE-SAC	RUIDOS	2356	R	AC	74	\$834	104,297	SLURRY SEAL
SALAMO ROAD	10TH STREET	380' S. OF BARRINGTON DRIVE	SALAMO	31A	A	AC/AC	85	\$10,308	165,185	SLURRY SEAL
SKYE CT.	SKYE PARKWAY	CUL-DE-SAC	SKYECT	1369	R	AC	78	\$493	116,879	SLURRY SEAL
SOUTH RD.	COEUR D'ALENE DR.	VISTA RIDGE DR.	SOUTHR	3390	R	AC	87	\$1,121	128,256	SLURRY SEAL
SOUTHSLOPE WAY	NORFOLK STREET	CUL-DE-SAC	SOUTHS	3329	R	AC	76	\$4,470	106,198	SLURRY SEAL
TAYLOR COURT	TAYLOR DRIVE	CUL-DE-SAC	TAYLCT	3400	R	AC	89	\$627	125,073	SLURRY SEAL
TOP VIEW CT.	WILDERNESS DRIVE	CUL-DE-SAC	TOPVIE	1324	R	AC	85	\$1,106	133,066	SLURRY SEAL
TROON DRIVE	MARYLHURST	SKYE PARKWAY	TROON	1010B	O	AC	76	\$6,052	104,101	SLURRY SEAL
VIEW DRIVE	MARYLHURST DRIVE (19145)	MARYLHURST DRIVE (19888)	VIEWDR	1356	R	AC	77	\$6,051	105,937	SLURRY SEAL
WALNUT STREET	SUNSET AVENUE	MAPLE ST	WALNUT	3363	R	AC	76	\$1,766	105,117	SLURRY SEAL
WELLINGTON COURT	WELLINGTON DRIVE	CUL-DE-SAC	WELLIN	3336	R	AC	86	\$1,563	134,157	SLURRY SEAL
WENDY COURT	RIVER HEIGHTS CIRCLE	CUL-DE-SAC	WENDYC	4329	R	AC	84	\$2,048	125,171	SLURRY SEAL
WILDERNESS DRIVE	19401 HIDDEN SPRINGS ROAD	HIDDEN SPRINGS ROAD	WILDER	1325	R	AC	83	\$10,989	125,610	SLURRY SEAL
WILDWOOD DRIVE	CARRIAGE WAY	#19750 WILDWOOD DRIVE	WILDWO	1001A	O	AC	76	\$9,137	110,689	SLURRY SEAL
WILLSON STRET	BEGINNING PAVEMENT	WILLAMETTE DRIVE	WILLSO	2358	R	AC/AC	76	\$445	101,088	SLURRY SEAL
Treatment Total								\$149,948		
Year 2011 Total								\$149,948		

Year: 2012

11TH STREET	50 N OF LESLIE WAY	4TH AVENUE	11THST	4006B	R	AC	71	\$705	69,505	SLURRY SEAL
16TH STREET	BLANKENSHIP ROAD	DEAD END	16THST	3384	R	AC	84	\$209	117,166	SLURRY SEAL
5TH AVENUE	11TH STREET	6TH STREET	5THAVE	4002C	O	AC	75	\$6,846	94,053	SLURRY SEAL

** - Treatment from Project Selection

Scenarios Criteria:

Street Name	Begin Location	End Location	Street ID	Section ID	FC	Surface	PCI	Cost	Rating	Treatment
6TH AVENUE	15TH STREET	13TH STREET	6THAVE	4344B	R	AC/AC	88	\$1,564	121,864	SLURRY SEAL
6TH STREET	5TH AVENUE	WILLAMETTE FALLS DRIVE	6THST	4355	R	AC/AC	74	\$1,149	88,875	SLURRY SEAL
ARBOR DRIVE	(UPPER) MIDHILL DRIVE	WILLAMETTE DRIVE	ARBOR	1006A	O	AC	72	\$2,732	94,802	SLURRY SEAL
BEACON HILL DRIVE	BEACON HILL LN	CRESENT DR	BEACON	3008E	R	AC	84	\$3,202	115,030	SLURRY SEAL
BRANDON PLACE	DOLLAR STREET	CUL-DE-SAC	BRANDO	4331	R	AC	74	\$3,115	87,883	SLURRY SEAL
BURNS STREET	WILLAMETTE DRIVE	RIVER STREET	BURNS	203	C	AC	82	\$7,165	114,431	SLURRY SEAL
CARSON DRIVE	FALCON DRIVE	TAYLOR DRIVE	CARSON	3399	R	AC	86	\$1,211	118,811	SLURRY SEAL
CEDAROAK DRIVE	OLD RIVER DRIVE	TRILLIUM DRIVE	CEDARO	102B	C	AC/AC	88	\$4,776	116,728	SLURRY SEAL
CHELAN LOOP	CHELAN DR.	CHELAN DR.	CHELAN	3394	R	AC	84	\$2,049	113,968	SLURRY SEAL
CHERYL DRIVE	16TH STREET	100 FT. WEST OF KIMBERLY DR	CHERYL	4346A	R	AC	76	\$2,264	90,354	SLURRY SEAL
CHICKADEE COURT	HORTON ROAD	CUL-DE-SAC	CHICKA	2415	R	AC	71	\$1,182	89,074	SLURRY SEAL
COLLEGE VIEW	UPPER MIDHILL	DEAD END	COLLEG	1363	R	AC	74	\$1,543	92,813	SLURRY SEAL
DE BOK ROAD	KILLARNEY DRIVE	ROSEMARIE DRIVE	DEBOKR	308B	C	AC/AC	90	\$2,015	124,507	SLURRY SEAL
DE BOK ROAD	MARGERIE STREET	BLANKENSHIP ROAD	DEBOKR	308D	C	AC/AC	91	\$6,116	128,686	SLURRY SEAL
DONEGAL COURT	KILLARNEY DRIVE	CUL-DE-SAC	DONEGA	3312	R	AC	78	\$3,189	104,235	SLURRY SEAL
EVAH LANE	KIMBERLY DRIVE	DEAD END	EVAHLA	4348	R	AC	83	\$1,621	111,416	SLURRY SEAL
EXETER STREET	SOUTHSLOPE WAY	SUNSET AVENUE	EXETER	3388	R	AC	74	\$1,867	96,759	SLURRY SEAL
FAIRHAVEN DRIVE	100 FT S. OF RIVER VIEW DRIVE	HOUSE #3817	FAIRHA	3007A	O	AC	73	\$6,526	97,157	SLURRY SEAL
FALCON DRIVE	TANNLER DRIVE	CARSON DR.	FALCON	3307A	R	AC	75	\$5,357	90,214	SLURRY SEAL
HALL STREET	GREENE STREET	137 FT. SOUTH OF GREENE ST	HALLST	3324A	R	AC	74	\$677	91,728	SLURRY SEAL
HAMMERLE STREET	ATKINSON STREET	BARCLAY STREET	HAMMER	2012	R	AC	78	\$747	111,076	SLURRY SEAL
HOLMES STREET	WILLAMETTE DRIVE	DEAD END	HOLMES	2325	R	AC/AC	75	\$5,002	89,616	SLURRY SEAL
HOOD STREET	BURNS STREET	DEAD END	HOODST	2423	R	AC	78	\$457	109,522	SLURRY SEAL
JAY COURT	KIMBERLY DRIVE	DEAD END	JAYCT	4349	R	AC	83	\$944	111,416	SLURRY SEAL
KOBUK COURT	CROWN STREET	CUL-DE-SAC	KOBUKC	3377	R	AC	86	\$1,755	115,238	SLURRY SEAL
LOIS LANE	BARNES CIRCLE	DEAD END	LOISLN	3326	R	AC	73	\$1,098	92,792	SLURRY SEAL
MANCHESTER COURT	IMPERIAL DRIVE	DEAD END	MANCHE	3334	R	AC	78	\$1,020	95,628	SLURRY SEAL
MARIA COURT	ARBOR DRIVE	CUL-DE-SAC	MARIA	1337	R	AC	72	\$1,780	88,340	SLURRY SEAL
MARYLWOOD CT.	SKYE PARKWAY	CUL-DE-SAC	MARYLW	1375	R	AC	85	\$3,717	120,711	SLURRY SEAL
MILES DRIVE	ROSEMONT ROAD	HORTON ROAD	MILESD	2010	O	AC	85	\$6,882	119,879	SLURRY SEAL

** - Treatment from Project Selection

Scenarios Criteria:

Street Name	Begin Location	End Location	Street ID	Section ID	FC	Surface	PCI	Cost	Rating	Treatment
NICOLE COURT	RIVER HEIGHT CIRCLE	CUL-DE-SAC	NICOLE	4326	R	AC	82	\$2,217	116,448	SLURRY SEAL
NICOLE DRIVE	#2250 RIVER HEIGHTS CIRCLE	#2120 RIVER HEIGHTS CIRCLE	NICOLE	4327	R	AC	75	\$3,296	92,165	SLURRY SEAL
ONEAL COURT	TAMARISK DRIVE	CUL-DE-SAC	ONEALC	3303	R	AC	76	\$1,755	98,520	SLURRY SEAL
PARKER ROAD	100' W. OF COHO LANE	200 FT. W. OF DAMON DR	PARKER	34C	A	AC	89	\$5,748	111,978	SLURRY SEAL
PONDERAY DRIVE	SALAMO ROAD	WILD ROSE LOOP	PONDER	3323	R	AC	79	\$6,540	98,481	SLURRY SEAL
REMINGTON DRIVE	FALCON DRIVE	TANNLER DRIVE	REMING	3306	R	AC	84	\$2,569	118,133	SLURRY SEAL
RIDGEBROOK DRIVE	SUNCREST DRIVE	SUNCREST	RIDGEB	1346	R	AC	84	\$4,700	113,968	SLURRY SEAL
ROGUE WAY	HASKINS RD	REMINGTON DRIVE	ROGUE	3810	R	AC	91	\$3,131	115,574	SLURRY SEAL
RYAN COURT	JOHNSON ROAD	CUL-DE-SAC	RYANCT	4302	R	AC	78	\$2,373	90,507	SLURRY SEAL
SHANNON PLACE	ZEUS DRIVE	CUL-DE-SAC	SHANNO	2012	R	AC	87	\$890	112,121	SLURRY SEAL
SPRING RIDGE DR.	HOUSE #19795	BENNINGTON CT	SPRING	1388B	R	AC	87	\$1,434	116,332	SLURRY SEAL
SUMMIT PLACE	SUMMIT STREET	DEAD END	SUMMIT	2384	R	AC	72	\$2,358	93,480	SLURRY SEAL
SUNRAY CT.	SUNCREST DRIVE	CUL-DE-SAC	SUNRAY	1318	R	AC	72	\$1,480	96,651	SLURRY SEAL
TAMARISK DRIVE	DE BOK ROAD	DEAD END	TAMARI	3302	R	AC	82	\$3,486	117,637	SLURRY SEAL
TAYLOR DRIVE	BLAND CIR	DEAD END	TAYLOR	3401	R	AC	86	\$2,714	114,994	SLURRY SEAL
VOLPP STREET	TUALATIN AVENUE	12TH STREET	VOLPPS	4004A	O	AC	72	\$3,105	87,466	SLURRY SEAL
WEBB STREET	TERRACE DRIVE	WILLAMETTE DRIVE	WEBBST	2367	R	AC	72	\$1,997	91,064	SLURRY SEAL
WHITE SALMON CT	COHO LANE	CUL DE SAC (30' RADIUS)	WHITES	3403	R	AC	89	\$2,407	123,025	SLURRY SEAL
WINDHAM OAKS	JOLIE POINT RD	HOUSE #2115 DEAD END	WINDHA	2011A	R	AC	87	\$2,384	116,542	SLURRY SEAL
WISTERIA COURT	WISTERIA ROAD	CUL-DE-SAC	WISTER	3304	R	AC	74	\$1,508	93,573	SLURRY SEAL
WISTERIA ROAD	TAMARISK DRIVE	DEAD END	WISTER	3305	R	AC	74	\$2,245	93,573	SLURRY SEAL
YORK STREET	SUSSEX STREET	EXETER STREET	YORKST	3348B	R	AC	74	\$995	91,728	SLURRY SEAL

Treatment Total \$149,813

Year 2012 Total \$149,813

Year: 2013

13TH STREET	BLANKENSHIP ROAD	CUL DE SAC	13THST	3371	R	AC	77	\$1,924	82,460	SLURRY SEAL
18TH STREET	NOVA COURT	CUL-DE-SAC	18THST	4310	R	AC	70	\$1,574	77,587	SLURRY SEAL
ALPINE DRIVE	HOUSE #1990	END OF LOOP	ALPINE	3407B	R	AC	77	\$7,605	83,341	SLURRY SEAL
ANN COURT	19TH STREET	CUL-DE-SAC	ANNCT	4308	R	AC	76	\$2,529	81,606	SLURRY SEAL

** - Treatment from Project Selection

Street Name	Begin Location	End Location	Street ID	Section ID	FC	Surface	PCI	Cost	Rating	Treatment
APRIL COURT	16TH STREET	CUL-DE-SAC	APRILC	4320	R	AC	70	\$2,256	77,589	SLURRY SEAL
BEACON HILL DRIVE	HOUSE # 2698	BEACON HILL LANE	BEACON	3008D	O	AC	90	\$2,521	103,201	SLURRY SEAL
BLAND CIRCLE	WEATHERHILL RD	300 FT. NORTH OF DAY RD	BLANDC	3801E	R	AC	77	\$3,331	79,265	SLURRY SEAL
BRIDGEVIEW DRIVE	EVERGREEN DR	EVERGREEN DR	BRIDGE	2382B	R	AC	93	\$2,576	105,282	SLURRY SEAL
BRIDLE WAY	TACK COURT	CUL-DE-SAC	BRIDLE	2403	R	AC	77	\$1,765	82,426	SLURRY SEAL
BROADWAY STREET	WEBB STREET	EASY STREET	BROADW	2006A	O	AC	79	\$3,280	110,051	SLURRY SEAL
BUCK STREET	FAILING STREET	HOLMES STREET	BUCKST	2002D	O	AC/AC	70	\$1,804	83,813	SLURRY SEAL
CASCADE STREET	BURNS STREET	CUL-DE-SAC	CASCAD	2342	R	AC/AC	94	\$2,001	101,656	SLURRY SEAL
CEDAROK DRIVE	WILLAMETTE DR. (HWY.43)	OLD RIVER DRIVE	CEDARO	102A	C	AC/AC	82	\$2,012	100,509	SLURRY SEAL
CHICKADEE COURT	HORTON ROAD	CUL-DE-SAC	CHICKA	2415	R	AC	79	\$1,218	96,085	SLURRY SEAL
COEUR DALENE DRIVE	HOUSE #2600 DEAD END	HOUSE #2690 DEAD END	COEURD	3322B	R	AC	85	\$2,487	106,780	SLURRY SEAL
COHO LANE	PARKER RD	HOUSE #4750	COHOLN	3402	R	AC	83	\$1,992	100,456	SLURRY SEAL
CRESTVIEW DRIVE	DEAD END (NORTH)	BLAND CIRCLE	CRESTV	3406B	R	AC	88	\$4,159	102,955	SLURRY SEAL
CRESTVIEW DRIVE	BLAND CIRCLE	ALPINE DRIVE	CRESTV	3406C	R	AC	77	\$1,114	83,341	SLURRY SEAL
DAWSON COURT	WILD ROSE LP	CUL DE SAC	DAWSON	3410	R	AC	83	\$439	87,996	SLURRY SEAL
ELLIOTT STREET	BUCK ST	DEAD END NORTH	ELLIOT	2327A	R	AC	91	\$603	100,937	SLURRY SEAL
FAILING STREET	DILLOW ST	CUL DE SAC	FAILIN	2003C	O	AC	79	\$844	102,166	SLURRY SEAL
FAIRHAVEN DRIVE	FAIRHAVEN CT	BEACON HILL DR	FAIRHA	3007C	O	AC	83	\$2,243	100,804	SLURRY SEAL
FAIRHAVEN CT	FAIRHAVEN DR	CUL DE SAC (34' RADIUS)	FAIRHA	3014	R	AC	84	\$1,566	104,127	SLURRY SEAL
FIRCREST DRIVE	BLAND CIRCLE	DEAD END	FIRCRE	3803	R	AC	89	\$2,391	106,147	SLURRY SEAL
FIRWOOD DRIVE	SKYLINE DRIVE	CUL-DE-SAC	FIRWOO	2379	R	AC	77	\$3,244	82,492	SLURRY SEAL
HOOD STREET	POST OFFICE (5665 HOOD)	BURNS ST	HOODST	204B	C	AC/AC	83	\$1,343	108,660	SLURRY SEAL
HOODVIEW AVENUE	SALAMO RD	NOBLE LN (EAST INT.)	HOODVI	3419	R	AC	86	\$3,604	100,957	SLURRY SEAL
HORTON COURT	HORTON ROAD	CUL-DE-SAC	HORTON	2396	R	AC	75	\$3,086	81,238	SLURRY SEAL
JAMIE CIRCLE	16TH STREET	END OF LOOP	JAMIEC	4321	R	AC	77	\$6,825	82,660	SLURRY SEAL
KIMBERLY DRIVE	CHERYL DRIVE	15TH STREET	KIMBER	4347	R	AC	78	\$4,992	94,253	SLURRY SEAL
MAPLE STREET	WALNUT STREET	CHESTNUT STREET	MAPLES	3361A	R	AC	74	\$1,197	80,658	SLURRY SEAL
MARQUETTE CT.	TULANE STREET	CUL-DE-SAC	MARQUE	2313	R	AC	78	\$1,018	106,902	SLURRY SEAL
MICHAEL CT	OSTMAN RD.	CUL-DE-SAC	MICHAE	4356	R	AC	82	\$2,020	107,091	SLURRY SEAL
OAK TREE COURT	HIDDEN SPRINGS ROAD	CUL-DE-SAC	OAKTRE	1323	R	AC	73	\$1,787	79,366	SLURRY SEAL

** - Treatment from Project Selection

Scenarios Criteria:

Street Name	Begin Location	End Location	Street ID	Section ID	FC	Surface	PCI	Cost	Rating	Treatment
OSTMAN ROAD	DOLLAR STREET	DOUGLAS STREET	OSTMAN	401B	C	AC	88	\$2,593	99,932	SLURRY SEAL
OSTMAN ROAD	WILLAMETTE FALLS DRIVE	RANCHO LOBO	OSTMAN	4334B	R	AC	75	\$1,643	80,841	SLURRY SEAL
PARKER ROAD	SUMMER RUN DR	100' W. OF COHO LANE	PARKER	34B	A	AC/AC	92	\$2,055	149,169	SLURRY SEAL
PINTO COURT	CHURCHILL DOWNS DRIVE	CUL-DE-SAC	PINTO	2386	R	AC	78	\$997	106,677	SLURRY SEAL
REMINGTON DRIVE	HASKINS ROAD	SALAMO RD	REMING	3306C	R	AC	86	\$2,928	102,898	SLURRY SEAL
RENAISSANCE CT.	SUMMIT ST.	CUL-DE-SAC	RENAIS	2424	R	AC	82	\$1,370	106,288	SLURRY SEAL
RIDGE COURT	RIDGE LANE	CUL DE SAC	RIDGEC	3416	R	AC	88	\$919	106,993	SLURRY SEAL
RIDGE LANE	WILD ROSE DR	END OF PAVEMENT	RIDGEL	3370B	R	AC	89	\$1,887	110,069	SLURRY SEAL
ROSEMARIE DRIVE	DE BOK ROAD	DEAD END	ROSEMA	3380	R	AC	73	\$3,707	79,517	SLURRY SEAL
ROSEMONT ROAD	200' W. OF HOUSE #1270	SANTA ANITA DRIVE	ROSEMO	23C	A	AC/AC	92	\$2,584	100,036	SLURRY SEAL
ROSE WAY	WALLING WAY	FAIRVIEW WAY	ROSEWY	1333	R	AC/AC	76	\$1,247	84,292	SLURRY SEAL
ROXBURY DRIVE	WEST DEAD END	WILD ROSE DR	ROXBDR	3414A	R	AC	87	\$2,631	103,888	SLURRY SEAL
SKYE PARKWAY	HILLSIDE DRIVE	LEIGH COURT	SKYEPA	1009A	O	AC	70	\$4,020	81,093	SLURRY SEAL
STONEHAVEN COURT	STONEHAVEN DRIVE	CUL-DE-SAC	STONHA	1373	R	AC	79	\$2,345	111,554	SLURRY SEAL
SUMMER RUN DRIVE	WHITE SALMON CT	PARKER RD	SUMMER	3404	R	AC	84	\$1,188	103,558	SLURRY SEAL
SUMMIT STREET	OXFORD STREET	ROSEMONT ROAD	SUMMIT	32	A	AC/AC	79	\$6,309	109,370	SLURRY SEAL
TACK COURT	CLUBHOUSE DRIVE	CUL-DE-SAC	TACK	2404	R	AC	78	\$1,699	82,786	SLURRY SEAL
VIEWPOINT ROAD	HOODVIEW DRIVE	DEAD END (HAMMERHEAD)	VIEWPO	3420	R	AC	86	\$1,809	100,957	SLURRY SEAL
VISTA COURT	FAIRVIEW WAY	CUL-DE-SAC	VISTAC	1394	R	AC	83	\$2,047	103,893	SLURRY SEAL
VISTA RIDGE DR.	SALAMO RD.	SOUTH RD.	VISTAR	3389	R	AC	80	\$5,202	100,170	SLURRY SEAL
WELLINGTON DRIVE	BEACON HILL DRIVE	FAIRHAVEN DRIVE	WELLIN	3337	R	AC	71	\$8,566	84,152	SLURRY SEAL
WILD ROSE DRIVE	PARKER RD	ROSEMONT RD	WILDDR	3408B	R	AC	86	\$4,626	100,957	SLURRY SEAL
WILLAMETTE VIEW CT.	DILLOW DRIVE	CUL-DE-SAC	WILLAM	2317	R	AC/AC	83	\$4,179	104,870	SLURRY SEAL

Treatment Total \$149,900

Year 2013 Total \$149,900

Year: 2014

CHEROKEE COURT	OLD RIVER DRIVE	CUL-DE-SAC	CHEROK	1343	R	AC	100	\$6,170	59,841	1.5 IN OVERLAY W/ LEVELING
								Treatment Total	\$6,170	
11TH STREET	50 N OF LESLIE WAY	4TH AVENUE	11THST	4006B	R	AC	77	\$747	66,443	SLURRY SEAL

** - Treatment from Project Selection

Scenarios Criteria:

Street Name	Begin Location	End Location	Street ID	Section ID	FC	Surface	PCI	Cost	Rating	Treatment
12TH STREET	WILLAMETTE FALLS DRIVE	8TH AVENUE	12THST	4007	O	AC	78	\$843	76,622	SLURRY SEAL
13TH STREET	6TH AVENUE	WILLAMETTE FALLS DRIVE	13THST	4008B	O	AC/AC	79	\$1,515	95,119	SLURRY SEAL
15TH STREET	5TH AVENUE	6TH AVENUE	15THST	4010A	O	AC/AC	90	\$1,034	92,502	SLURRY SEAL
15TH STREET	6TH AVENUE	WILLAMETTE FALLS DRIVE	15THST	4010B	O	AC/AC	90	\$899	92,502	SLURRY SEAL
16TH STREET	WILLAMETTE FALLS DRIVE	6TH AVENUE	16THST	4011A	O	AC/AC	80	\$1,640	95,917	SLURRY SEAL
18TH STREET	NOVA COURT	CUL-DE-SAC	18THST	4310	R	AC	78	\$1,622	80,357	SLURRY SEAL
APRIL COURT	16TH STREET	CUL-DE-SAC	APRILC	4320	R	AC	78	\$2,323	80,359	SLURRY SEAL
ARBOR DRIVE	(UPPER) MIDHILL DRIVE	WILLAMETTE DRIVE	ARBOR	1006A	O	AC	78	\$2,899	99,584	SLURRY SEAL
BEACON HILL DRIVE	BARRINGTON DRIVE	HOUSE # 2698	BEACON	3008C	O	AC	77	\$5,798	70,051	SLURRY SEAL
BLAND CIRCLE	SAINT MORITZ (SOUTH INT.)	HOUSE #22995	BLANDC	3801C	R	AC	83	\$6,180	92,418	SLURRY SEAL
BLUEGRASS WAY	CARRIAGE WAY	HIDDEN SPRINGS ROAD	BLUEGR	1304	R	AC	78	\$4,773	108,586	SLURRY SEAL
BUCK STREET	FAILING STREET	HOLMES STREET	BUCKST	2002D	O	AC/AC	78	\$1,858	85,858	SLURRY SEAL
CALAROGA COURT	CALAROGA DRIVE	DEAD END	CALARO	1347	R	AC/AC	93	\$1,660	97,557	SLURRY SEAL
CAUFIELD STREET	RANDALL ST	TOMPKINS STREET	CAUFIE	2328B	R	AC/AC	84	\$1,077	91,108	SLURRY SEAL
CLARK STREET	LONG STREET	OREGON CITY BLVD.	CLARK	303A	C	AC/AC	80	\$8,109	94,449	SLURRY SEAL
COHO LANE	HOUSE #4750	RIDGE LN	COHOLN	3402A	R	AC	91	\$3,744	91,160	SLURRY SEAL
CRESTVIEW DRIVE	BLAND CIRCLE (SOUTH INT.)	DEAD END (HOUSE #2474)	CRESTV	3406A	R	AC	85	\$3,567	94,539	SLURRY SEAL
CROWN COURT	CROWN STREET	CUL-DE-SAC	CROWNC	3378	R	AC/AC	80	\$1,164	95,709	SLURRY SEAL
CUSHMAN DRIVE	PERRIN STREET	CUL-DE-SAC	CUSHMA	2335	R	AC/AC	91	\$863	99,994	SLURRY SEAL
DESCHUTES LANE	HASKINS RD	ROGUE WAY	DESCHU	3811	R	AC	84	\$1,652	95,927	SLURRY SEAL
DODGE WAY	16TH STREET	CUL-DE-SAC	DODGEW	4319	R	AC	78	\$1,661	88,576	SLURRY SEAL
FALCON DRIVE	CARSON DRIVE	BLAND CIRCLE	FALCON	3307B	R	AC	78	\$1,224	77,917	SLURRY SEAL
GARDNER LANE	IRELAND LN	DEAD END WEST	GARDNE	3821	R	AC	95	\$798	90,508	SLURRY SEAL
HALE DRIVE	COHO LN	RIDGE LN	HALEDR	3822	R	AC	93	\$1,149	95,249	SLURRY SEAL
HOLLY STREET	GROVE STREET	RIVER STREET	HOLLY	2345B	R	AC/AC	93	\$2,273	90,875	SLURRY SEAL
HOODVIEW COURT	SALAMO RD	CUL DE SAC	HOODVC	3807	R	AC	85	\$727	94,229	SLURRY SEAL
KENSINGTON CT	CUL DE SAC (SOUTH)	HASKINS RD	KENSIN	3013A	R	AC	78	\$1,417	87,658	SLURRY SEAL
KENSINGTON CT	HASKINGS RD	CUL DE SAC (NE)	KENSIN	3013B	R	AC	82	\$2,596	93,323	SLURRY SEAL
K STREET	WEBB STREET	TERRACE DRIVE	KST	2377	R	AC/AC	89	\$1,087	95,294	SLURRY SEAL

** - Treatment from Project Selection

Scenarios Criteria:

Street Name	Begin Location	End Location	Street ID	Section ID	FC	Surface	PCI	Cost	Rating	Treatment
LANCASTER STREET	CORNWALL STREET	EXETER STREET	LANCAS	3347	R	AC/AC	78	\$2,996	65,942	SLURRY SEAL
LEIGH COURT	SKYE PARKWAY	CUL-DE-SAC	LEIGH	1367	R	AC	78	\$600	80,657	SLURRY SEAL
LEONARD STREET	SIMPSON ST	DEAD END	LEONAR	3816	R	AC	82	\$620	93,323	SLURRY SEAL
LESLIES WAY	11TH STREET	10TH STREET	LESLIE	4358	R	AC	77	\$2,103	87,820	SLURRY SEAL
MAPLE COURT	MAPLE TERRACE	CUL-DE-SAC	MAPLEC	2314	R	AC/AC	93	\$907	90,875	SLURRY SEAL
MARIA COURT	ARBOR DRIVE	CUL-DE-SAC	MARIA	1337	R	AC	78	\$1,889	89,950	SLURRY SEAL
MICHAEL DR.	#2288 MICHAEL DR.	OSTMAN DR.	MICHAE	4304A	R	AC	78	\$1,956	92,911	SLURRY SEAL
NOBLE LANE	PARKER RD	HOODVIEW AVE	NOBLE	3418	R	AC	84	\$4,603	95,472	SLURRY SEAL
NOMIE WAY	WILD ROSE LOOP	SABO LN	NOMIEW	3411	R	AC	86	\$2,197	97,353	SLURRY SEAL
RANDALL STREET	CAUFIELD STREET	DAVENPORT STREET	RANDAL	2332B	R	AC/AC	84	\$868	91,108	SLURRY SEAL
ROSEMONT RIDGE COURT	ZEUS DR	CUL DE SAC	ROSEMR	2426	R	AC	92	\$875	100,272	SLURRY SEAL
ROXBURY COURT	ROXBURY DRIVE	CUL DE SAC	ROXBCT	3415	R	AC	83	\$568	92,363	SLURRY SEAL
ROXBURY DRIVE	WILD ROSE DR	DEAD END EAST	ROXBDR	3414B	R	AC	77	\$3,431	76,636	SLURRY SEAL
SABO LANE	BEACON HILL LANE	HOUSE # 3016	SABOLA	3813A	R	AC	76	\$1,866	71,274	SLURRY SEAL
SABO LANE	HOUSE #3016	CUL DE SAC	SABOLA	3813B	R	AC	88	\$7,391	98,669	SLURRY SEAL
SANTA ANITA DRIVE	HORTON ROAD	HIDDEN SPRINGS ROAD	SANTAA	24C	A	AC	90	\$12,691	97,249	SLURRY SEAL
SKYE PARKWAY	HILLSIDE DRIVE	LEIGH COURT	SKYEPA	1009A	O	AC	78	\$4,140	85,689	SLURRY SEAL
SAINT MORITZ LOOP	BLAND CIRCLE	BLAND CIRCLE	STMORI	3804	R	AC	83	\$1,102	88,107	SLURRY SEAL
SUMMIT PLACE	SUMMIT STREET	DEAD END	SUMMIT	2384	R	AC	78	\$2,502	97,685	SLURRY SEAL
SUNBREAK LANE	CRESTVIEW DR	DEAD END (HOUSE #2976)	SUNBRE	3805	R	AC	84	\$2,061	91,311	SLURRY SEAL
SUNRAY CT.	SUNCREST DRIVE	CUL-DE-SAC	SUNRAY	1318	R	AC	78	\$1,571	102,774	SLURRY SEAL
TERRACE DRIVE	WEBB STREET	WEST A STREET	TERRAC	2378	R	AC/AC	91	\$2,143	99,994	SLURRY SEAL
TOMPKINS COURT	TOMPKIN ST	PRIVATE DRIVE	TOMPKI	2429	R	AC	77	\$557	82,992	SLURRY SEAL
TRILLIUM DRIVE	CEDAROAK DRIVE	OLD RIVER DRIVE	TRILLI	1008	O	AC/AC	78	\$6,069	90,409	SLURRY SEAL
VIRGINIA LANE	BLANKENSHIP ROAD	DEAD END	VIRGIN	3316	R	AC	78	\$2,881	80,352	SLURRY SEAL
VOLPP STREET	TUALATIN AVENUE	12TH STREET	VOLPPS	4004A	O	AC	78	\$3,294	88,568	SLURRY SEAL
WALLING CIRCLE	WILLAMETTE DRIVE (S. END)	WILLAMETTE DRIVE (N. END)	WALLIN	1328	R	AC/AC	78	\$2,879	90,409	SLURRY SEAL
WEBB STREET	TERRACE DRIVE	WILLAMETTE DRIVE	WEBBST	2367	R	AC	78	\$2,119	94,133	SLURRY SEAL
								Treatment Total	\$143,778	
								Year 2014 Total	\$149,948	

** - Treatment from Project Selection

Scenarios Criteria:

Street Name	Begin Location	End Location	Street ID	Section ID	FC	Surface	PCI	Cost	Rating	Treatment	
Year: 2015											
MOHAWK WAY	WILLAMETTE DRIVE	END OF PAVEMENT	MOHAWK	2302	R	AC	100	\$10,858	58,043	1.5 IN OVERLAY W/ LEVELING	
TERRA VISTA CT.	CEDAROAK DRIVE	CUL-DE-SAC	TERRAV	1355	R	AC	100	\$5,049	57,614	1.5 IN OVERLAY W/ LEVELING	
								Treatment Total	\$15,908		
12TH STREET	#1201 12TH STREET	TUALATIN STREET	12THST	45B	A	AC	89	\$1,580	115,210	SLURRY SEAL	
12TH STREET	TUALATIN AVENUE	4TH AVENUE	12THST	45C	A	AC	89	\$566	115,210	SLURRY SEAL	
12TH STREET	4TH AVENUE	WILLAMETTE FALLS DRIVE	12THST	45D	A	AC	89	\$7,570	115,210	SLURRY SEAL	
ATHENA ROAD	APOLLO ROAD	DEAD END	ATHENA	2407	R	AC	79	\$4,889	78,488	SLURRY SEAL	
BRANDON PLACE	DOLLAR STREET	CUL-DE-SAC	BRANDO	4331	R	AC	78	\$3,404	84,413	SLURRY SEAL	
CHURCHILL COURT	CHURCHILL DOWNS DRIVE	CUL-DE-SAC	CHURCH	2385	R	AC	85	\$627	111,631	SLURRY SEAL	
DAMON DRIVE	PARKER RD	WINKEL WAY	DAMON	3825	R	AC	90	\$582	85,825	SLURRY SEAL	
DAY ROAD	BLAND CIRCLE	SALAMO ROAD	DAYRD	3800	R	AC	78	\$3,894	80,805	SLURRY SEAL	
DOLLAR STREET	BRANDON STREET	WILLAMETTE FALLS DRIVE (EAST)	DOLLAR	44B	A	AC/AC	82	\$19,989	146,706	SLURRY SEAL	
FAIRHAVEN DRIVE	100 FT S. OF RIVER VIEW DRIVE	HOUSE #3817	FAIRHA	3007A	O	AC	78	\$7,131	96,941	SLURRY SEAL	
FAIRHAVEN DRIVE	HOUSE #3817	FAIRHAVEN COURT	FAIRHA	3007B	O	AC	78	\$3,582	86,818	SLURRY SEAL	
HASKINS DRIVE	REMINGTON DR	DEAD END (EAST)	HASKIN	3012B	R	AC	77	\$3,444	77,545	SLURRY SEAL	
HIDDEN SPRINGS RD.	BLUEGRASS WAY	AUTUMN VIEW COURT	HIDDEN	11E	A	AC/AC	89	\$6,366	127,286	SLURRY SEAL	
HIDDEN SPRINGS ROAD	AUTUMN VIEW COURT	WILLAMETTE DRIVE	HIDDEN	11F	A	AC	92	\$8,194	128,545	SLURRY SEAL	
HOLLY STREET	WILLAMETTE DRIVE	GROVE STREET	HOLLY	2345A	R	AC/AC	91	\$3,615	91,073	SLURRY SEAL	
HORTON ROAD	DEAD END	PARKVIEW TERRACE	HORTON	202A2	R	AC	83	\$3,219	96,967	SLURRY SEAL	
IRELAND LANE	GARDNER LN	ROSEMONT RD	IRELAN	3820	R	AC	92	\$2,910	90,618	SLURRY SEAL	
JOURNEY COURT	WILD ROSE WAY	CUL DE SAC	JOURNE	3409	R	AC	77	\$577	75,127	SLURRY SEAL	
KILLARNEY DRIVE	MATHENY DRIVE	ALPINE DR	KILLAR	3003B	O	AC	78	\$7,398	78,273	SLURRY SEAL	
LARSON AVENUE	MAPLE TERRACE	JOLIE POINTE ROAD	LARSON	2310B	R	AC/AC	90	\$3,082	89,418	SLURRY SEAL	
LEWTHWAITE STREET	BROADWAY STREET	AMY STREET	LEWTHW	2370	R	AC	78	\$2,215	77,949	SLURRY SEAL	
LOIS LANE	BARNES CIRCLE	DEAD END	LOISLN	3326	R	AC	78	\$1,199	91,292	SLURRY SEAL	
MAPLE TERRACE	#2120 MAPLE TERRACE	CUL-DE-SAC	MAPLET	2315B	R	AC/AC	91	\$2,168	91,073	SLURRY SEAL	
MAXFIELD DRIVE	PARKER RD	WINKEL WAY	MAXFIE	3823	R	AC	92	\$769	90,618	SLURRY SEAL	
MICHLLEN AVENUE	KAPTEYNS STREET	DEAD END	MICHL	1345	R	AC	85	\$531	77,241	SLURRY SEAL	

** - Treatment from Project Selection

Street Name	Begin Location	End Location	Street ID	Section ID	FC	Surface	PCI	Cost	Rating	Treatment
OAK TREE COURT	HIDDEN SPRINGS ROAD	CUL-DE-SAC	OAKTRE	1323	R	AC	78	\$1,896	78,382	SLURRY SEAL
RAINIER PLACE	JOLIE POINTE ROAD (W. END)	JOLIE POINTE ROAD (E. END)	RAINER	2305	R	AC/AC	91	\$4,606	91,073	SLURRY SEAL
ROCKRIDGE DRIVE	RIVER VIEW DRIVE	IMPERIAL DRIVE	ROCKRI	3331	R	AC	78	\$2,757	103,823	SLURRY SEAL
RUIDOSO COURT	CLUBHOUSE CIRCLE	CUL-DE-SAC	RUIDOS	2356	R	AC	78	\$939	100,073	SLURRY SEAL
SANTA ANITA DRIVE	430' S. OF HORTON RD	HORTON RD	SANTAA	24B	A	AC	92	\$2,323	128,545	SLURRY SEAL
SPRING ROCK CIRCLE	RIVER VIEW DRIVE	SUNSET AVENUE	SPRING	3330	R	AC	77	\$2,768	77,890	SLURRY SEAL
SUN CIRCLE	CARRIAGE WAY (2010)	CARRIAGE WAY (1890)	SUNCIR	1321	R	AC/AC	91	\$9,184	90,994	SLURRY SEAL
WALDEN STREET	LONG STREET	RIVER VIEW AVENUE	WALDEN	3353	R	AC/AC	78	\$1,005	63,600	SLURRY SEAL
WELLINGTON DRIVE	BEACON HILL DRIVE	FAIRHAVEN DRIVE	WELLIN	3337	R	AC	77	\$9,087	85,962	SLURRY SEAL
								Treatment Total	\$134,067	
								Year 2015 Total	\$149,975	
								Grand Total	\$749,584	