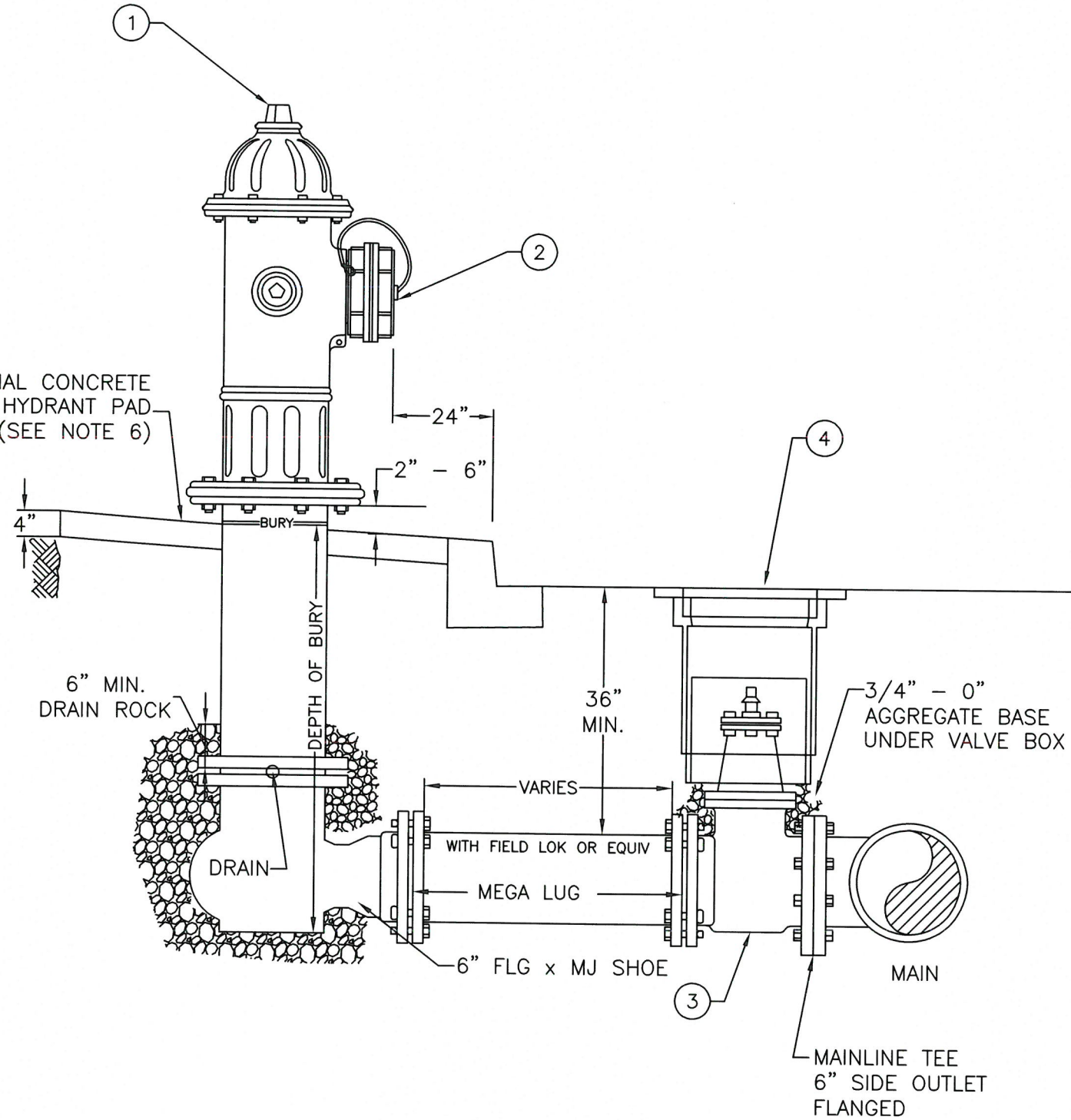



MATERIALS:

1. HYDRANT – MUELLER SUPER CENTURION MODEL A423 OR CLOW MEDALLION F2545 (OR APPROVED EQUAL). COLOR SHALL BE SAFETY YELLOW.
2. STORZ ADAPTER – REMOVE SAFETY CHAINS AND INSTALL 5X4.5 NFT STORZ ADT WITH CAP
3. VALVE – 6" MUELLER RESILIENT WEDGE GATE VALVE MODEL A-2361-19 (OR APPROVED EQUAL)
4. VALVE BOX – 18" TALL CAST IRON VALVE BOX WITH "W" COVER AND PVC OPTIONAL CONCRETE HYDRANT PAD (SEE NOTE 6) EXTENSION, PER ODOT RD258.

NOTES:

1. ALL JOINTS SHALL BE RESTRAINED WITH MEGALUG MECHANICAL JOINT RESTRAINTS OR APPROVED EQUAL.
2. HYDRANT DRAIN OUTLETS SHALL REMAIN OPEN AND OPERATIONAL. PLACE CLEAN, 1 1/2" – 3/4" DRAIN ROCK AROUND SHOE TO AT LEAST 6" ABOVE DRAIN OUTLETS.
3. HYDRANTS SHALL BE PLACED ACCORDING TO THE FOLLOWING STANDARDS:
  - 3.1. WHERE A PLANTER STRIP EXISTS BETWEEN THE CURB AND SIDEWALK, A HYDRANT SHALL BE PLACED WITHIN THE PLANTER STRIP SO THAT THE FRONT PORT IS 24" BEHIND THE FACE OF THE CURB.
  - 3.2. WHERE THE SIDEWALK IS ADJACENT TO THE CURB, A HYDRANT SHALL BE PLACED BEHIND THE SIDEWALK.
  - 3.3. WHERE CURB AND SIDEWALK DO NOT EXIST, A HYDRANT SHALL BE PLACED ACCORDING TO THE DIRECTION OF CITY STAFF.
4. CONCRETE HYDRANT PADS ARE OPTIONAL AND SHALL BE INSTALLED AT THE DIRECTION OF CITY STAFF. ALL FITTINGS THAT CONTACT CONCRETE SHALL BE WRAPPED IN PLASTIC.
5. PROVIDE 2" TO 6" OF CLEARANCE BETWEEN THE TOP OF THE HYDRANT PAD OR GROUND SURFACE AND THE BOTTOM OF THE FLANGED BOLT PATTERN OF THE HYDRANT.
6. A 3-FOOT MINIMUM CLEAR ZONE SHALL BE MAINTAINED AROUND ALL HYDRANTS. NO TREES, POLES, OR FURNITURE ARE ALLOWED WITHIN THIS ZONE.



Standard Drawing No. WL-RD254	Title: FIRE HYDRANT
Effective Date: 08/01/19	Approved:  City Engineer

**West Linn**  
CITY OF  
PUBLIC WORKS DEPARTMENT - STANDARD DRAWINGS  
22500 Salamo Road, West Linn OR 97068  
Phone: 503-722-5500  
www.westlinnregion.gov

NOTE:  
All material and workmanship shall be in accordance with the City of West Linn Standard Construction Specifications.

The selection and use of this Standard Drawing, while designed in accordance with generally accepted engineering principles and practices, is the sole responsibility of the user and should not be used without consulting a Registered Professional Engineer.

File  
WL-RD254.dwg