



# WEST LINN TRANSPORTATION SYSTEM PLAN

## *PEDESTRIAN PRIORITIZATION UPDATE*

# Agenda



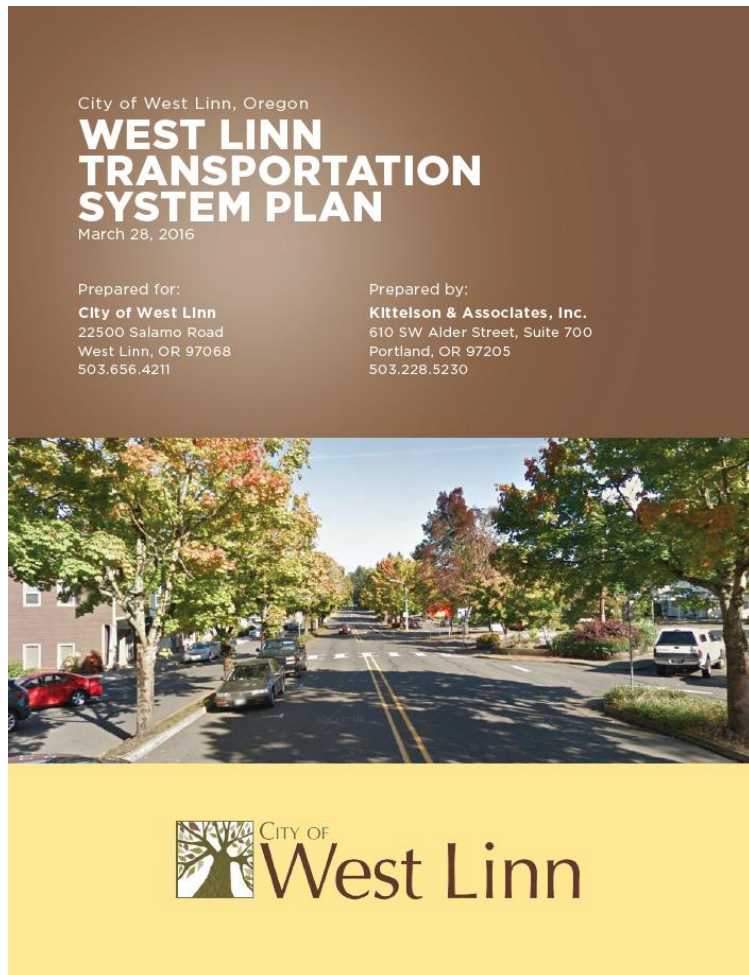
- Background – What is West Linn TSP?
- Existing Pedestrian Facilities in West Linn
- Pedestrian System Deficiencies and Gaps
- Pedestrian System Needs: Essential Destinations
- Metro's Regional Pedestrian Network
- Clackamas County Principal Active Transportation Routes (PAT)
- Safe Routes to School (SRTS)
- Pedestrian TSP Projects
  - Prioritization Criteria based on Goals
  - Project types at a glance
  - Pedestrian Project List
- CFEC Prioritization Rules
  - CFEC RULE 660-012-0505
  - CFEC RULE 660-012-0155
  - CFEC RULE 660-012-0520
- Transportation Funding for Pedestrian Improvements
- Next Steps



# West Linn Transportation System Plan

## What is the West Linn TSP?

- Long-range planning document that identifies the transportation facilities and services needed to support growth over a 20-year period
- Provides City with guidance for operating and improving all elements of the multimodal transportation system
- Focuses on priority projects, policies, and programs for the next 20 years
- Provides a vision for longer term projects that could be implemented, should funding become available
- Guides development review decisions, CIP programming, and efforts to obtain grant funding
- Intended to be flexible to respond to changing community needs and revenue sources

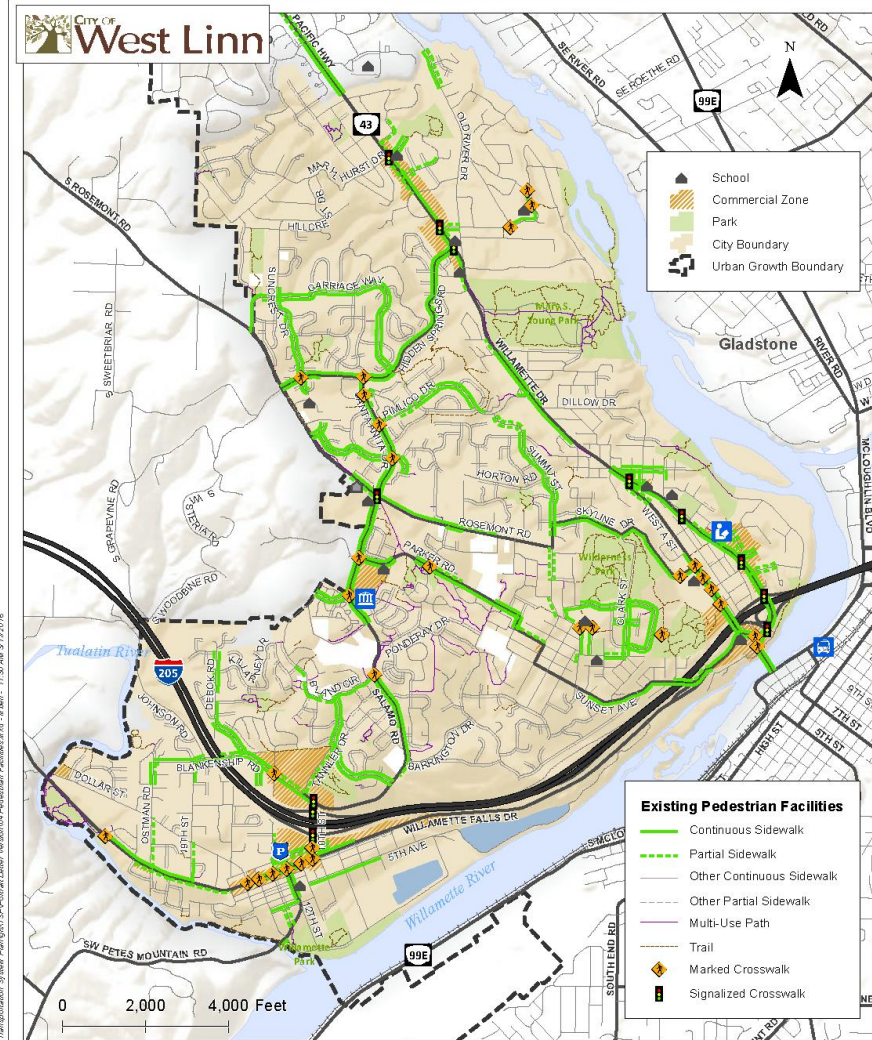


*Last updated in 2016*

# Existing Pedestrian Facilities

West Linn Transportation System Plan

March 2016



Existing Pedestrian Facilities  
West Linn, Oregon

Figure  
4

This product is for informational purposes and may not have been prepared for, or be suitable for, legal, engineering, or surveying purposes. Users of this information should review or consult the primary data and information sources to ascertain the usability of the information.

Coordinate System: NAD 1983 HARN StatePlane Oregon North FIPS 3601 Feet Intl  
Data Sources: City of West Linn, Metro Data Resource Center  
Terrain Sources: USGS, ESRI, TANA, AND

## Existing Infrastructure (from TSP):

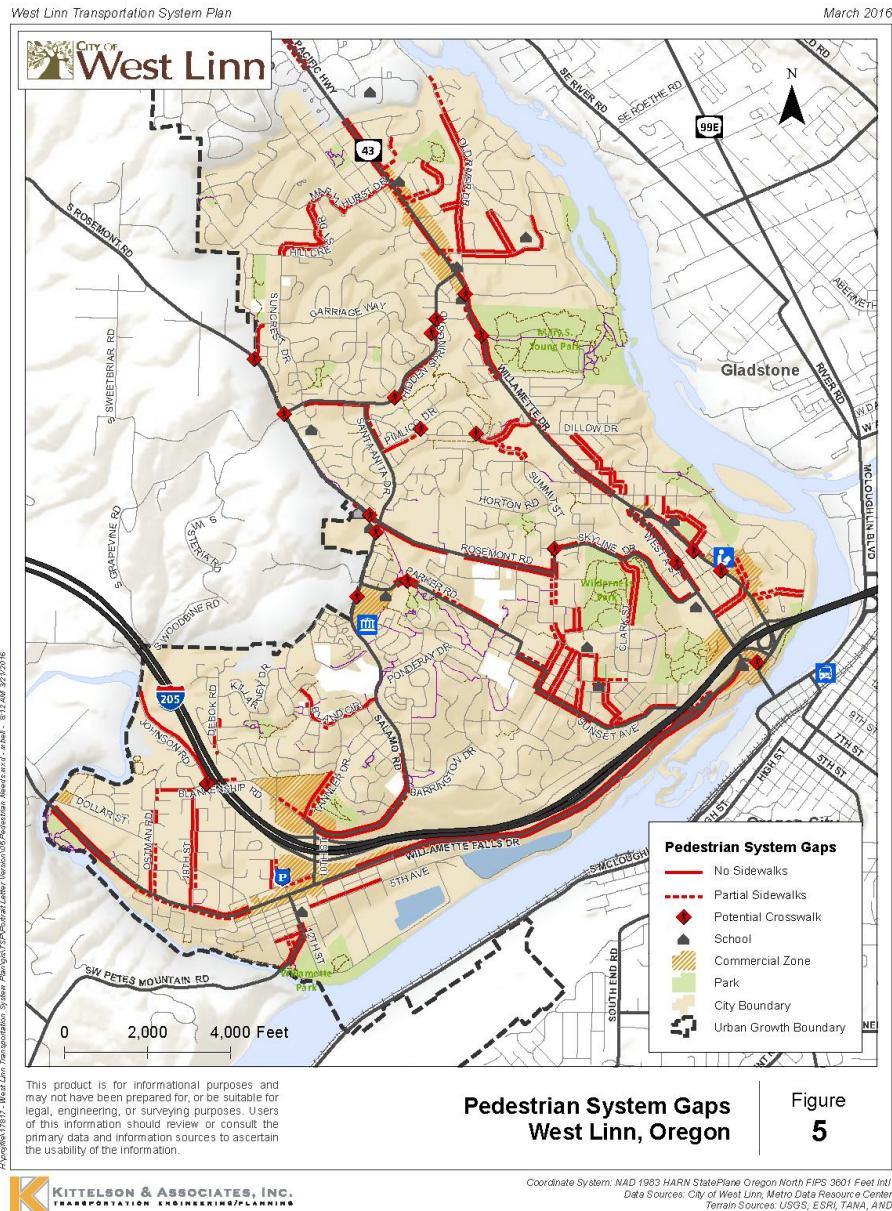
- The City of West Linn has:
  - continuous sidewalks along a majority of arterial and collector streets as well as neighborhood routes and local streets.
  - Partial sidewalks along a few sections of the city
  - Marked crosswalks at several major intersections.

## Future Needs and challenges (From TSP):

- Need for sidewalks along several arterials, collector streets, neighborhood routes and local streets.
- Need for sidewalks along both sides of all arterial, collector, SRTS routes, and commercial streets.
- Significant grade and topography limit the ability to construct when dealing with steep slopes.
- The City would like to provide at least one continuous sidewalk connection between activity centers and along arterial and collector roadways to provide safe and convenient non-motorized travel options.

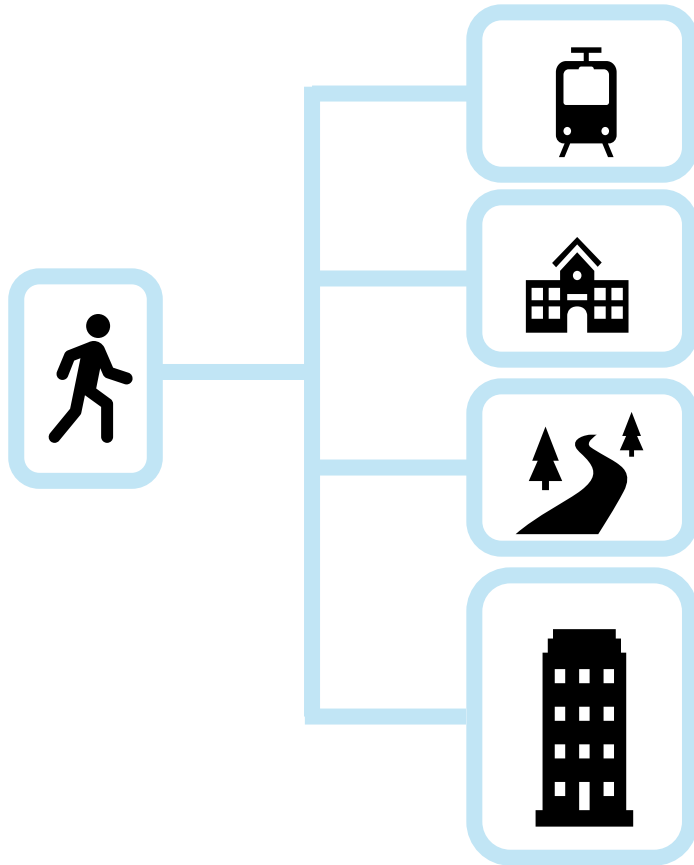


# Pedestrian System Gaps



# Pedestrian System Needs

## *Essential Destinations*



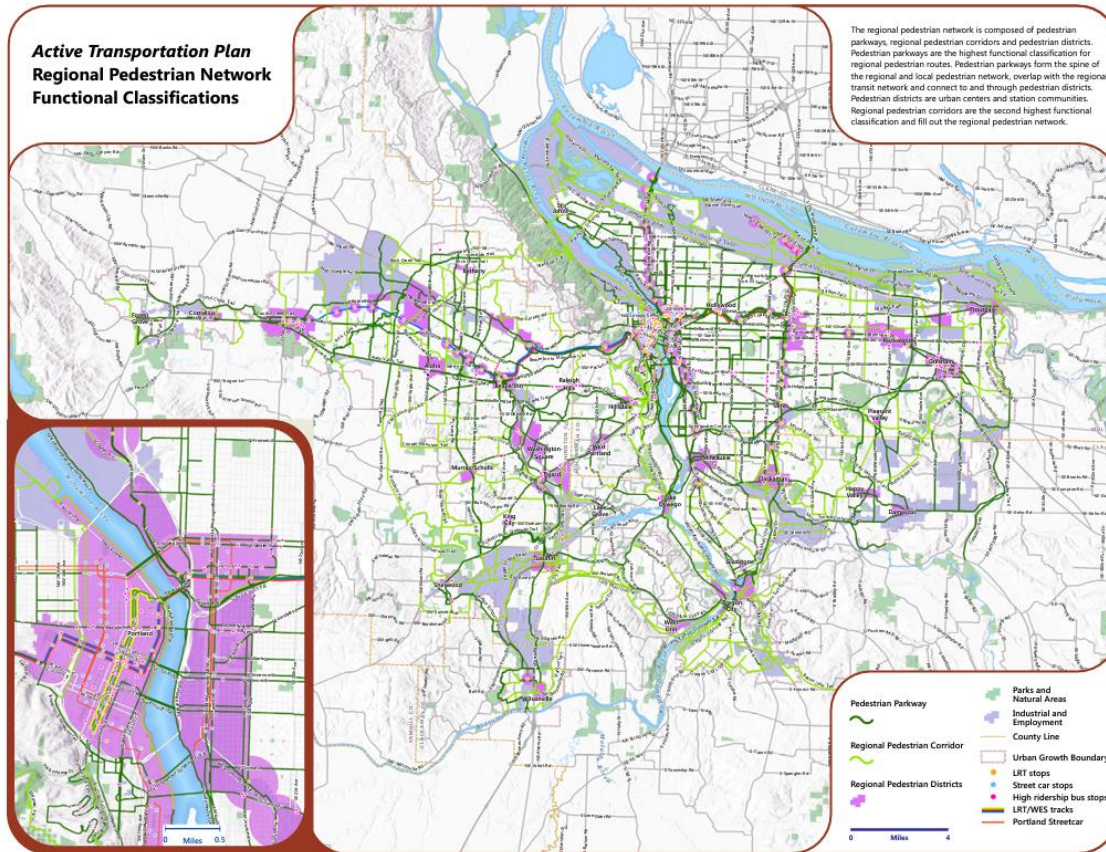
- **Essential Destinations:**

- **Transit Facilities and Services:** There are two fixed-route bus lines ( Line 35 and Line 154) that serve multiple transit stops and a park-and-ride on OR 43 near Cedar Oak Drive.
- **Schools:** There are five primary, one middle, and one high school. Most of which have limited pedestrian connectivity or include significant gaps in the pedestrian and bicycle networks.
- **Parks:** There are numerous parks, including Mary S. Young, Hammerle, Willamette, Fields Bridge, Marylhurst, and Tanner Creek.
- **Public Facilities:** There are several public facilities, including City Hall, the adult community center, and the library.
- **Commercial Areas:** There are four main commercial areas which are located near the Willamette Drive/I-205 interchange, the 10th Street/I-205 interchange, the Salamo Road/Parker Road intersections, and along Willamette Drive

# Pedestrian System Needs

## *Metro's Regional Pedestrian Network*

- Regional Routes:



- **Pedestrian Parkways:** High quality and high priority routes for pedestrian activity. Generally major urban streets that provide frequent and/or almost frequent transit service.
- **Regional Pedestrian Corridors:** Major or minor arterial or regional trail that is not designated as a pedestrian parkway.
- **Local Pedestrian Corridors:** These corridors include any street or trail that is not a regional pedestrian corridor.
- **Pedestrian Districts:** Areas with a concentration of transit, commercial, cultural, educational, institutional, and/or recreational destinations where pedestrian travel is intended to be attractive, comfortable and safe.

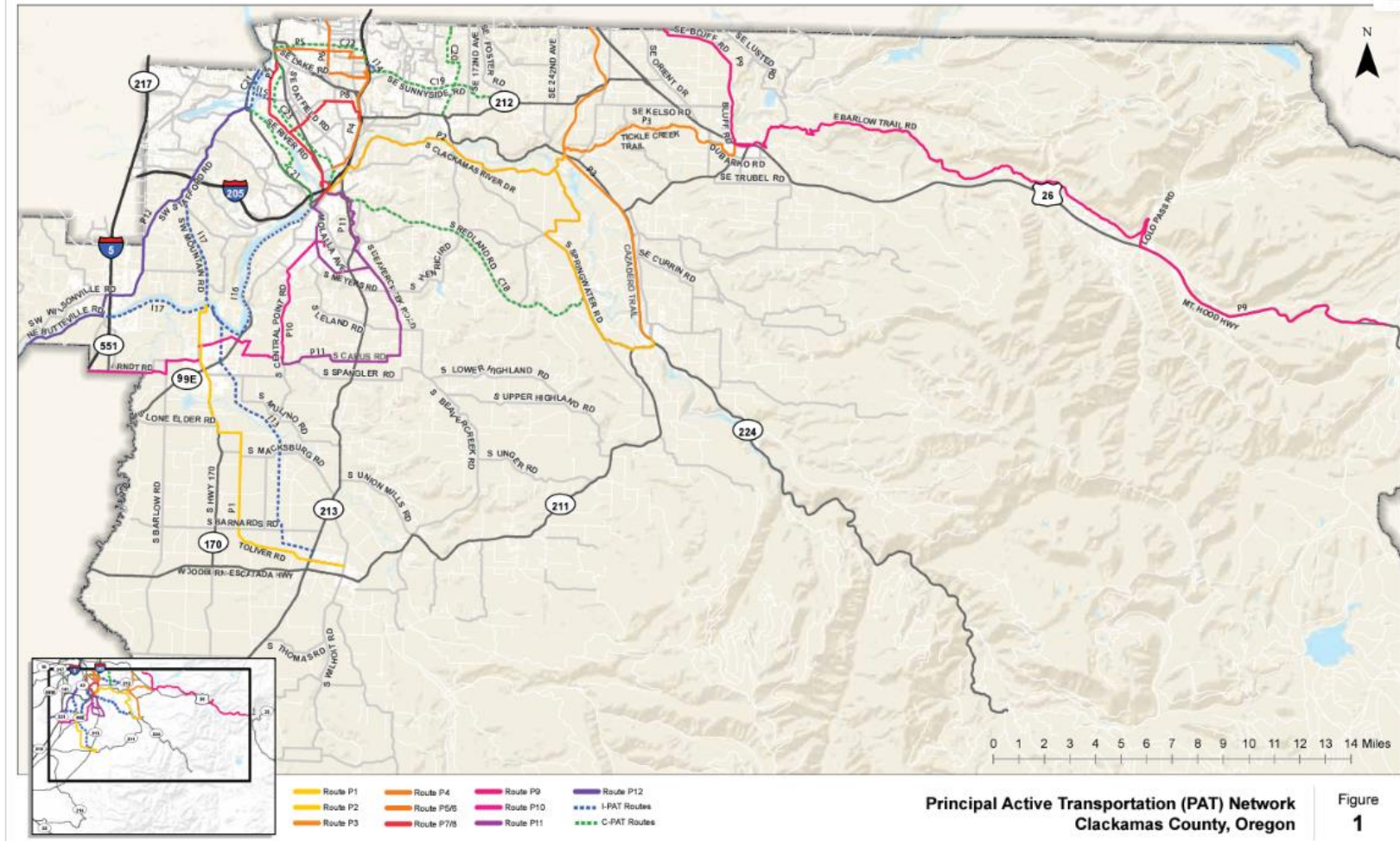


# Pedestrian System Needs

## Clackamas County Principal Active Transportation Routes

- PAT Routes:

Clackamas County Active Transportation Plan



Active Transportation Plan (ATP) identifies key active transportation routes that connect destinations and communities in Clackamas County, both rural and urban.

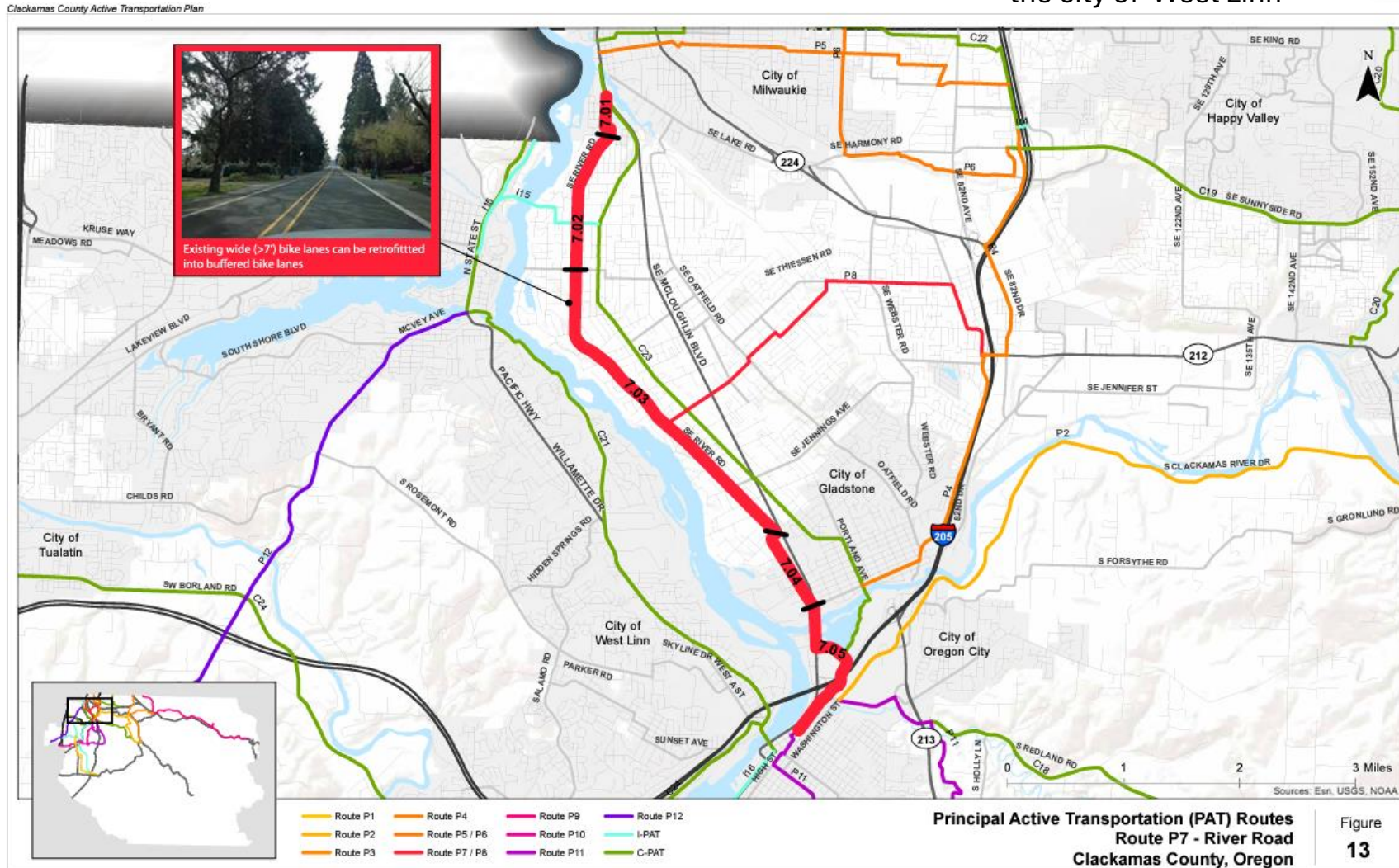
The primary objective of the Clackamas County ATP was to identify a connected active transportation network consisting of the highest priority, most important routes in both the urban and rural areas.



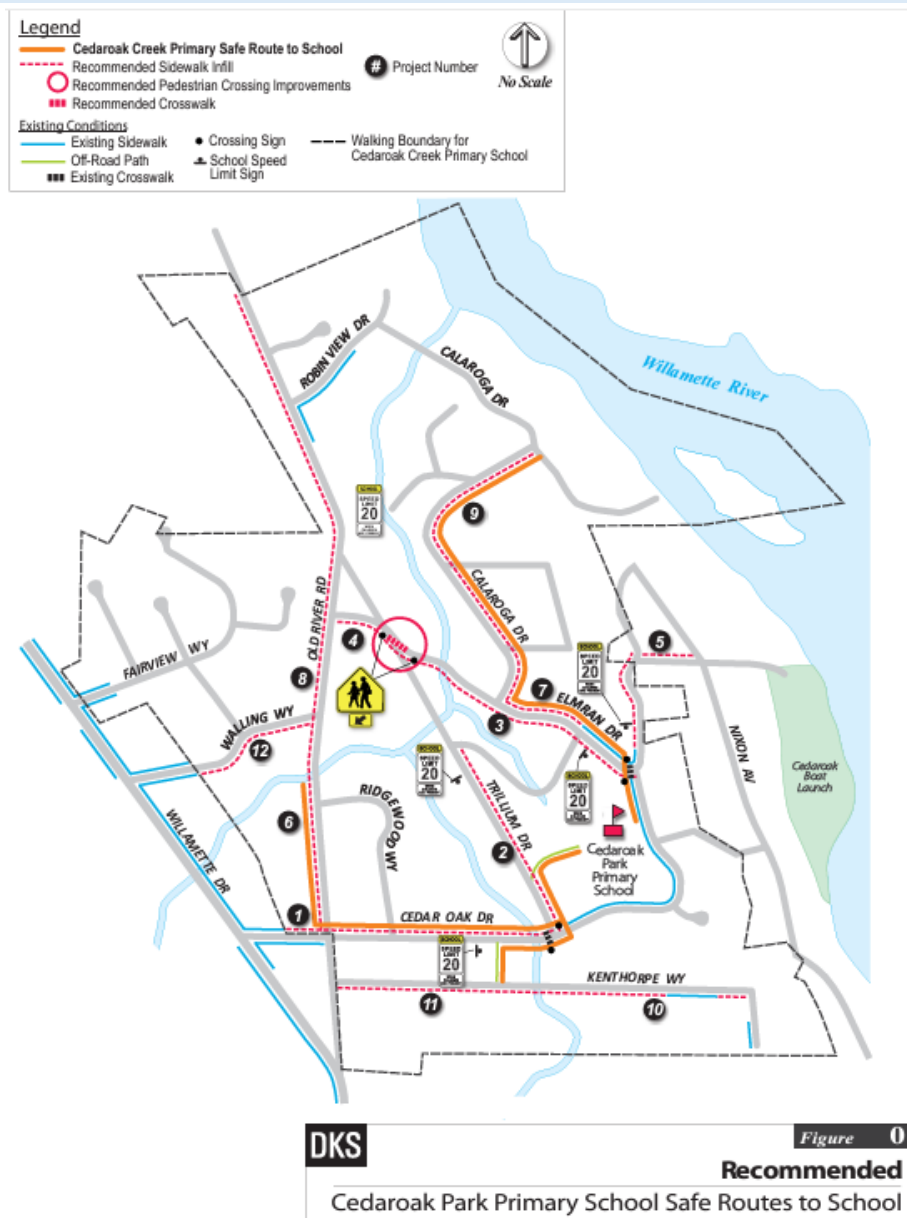
# Pedestrian System Needs

## Clackamas County Principal Active Transportation Routes

- **PAT Routes:** C-PAT Route crosses through the city of West Linn



# Pedestrian System Needs



## Safe Routes to School

### • SRTS Routes:

Each school in West Linn has a map that shows the safe routes around the area.

#### Primary School Safe Routes to School

Boeckman Creek Primary School

Boones Ferry Primary School

Bolton Primary School

CedarOak Park Primary School

Lowrie Primary School

Stafford Primary

Stafford Primary does not have walking areas. All students use transportation.

Sunset Primary School

Trillium Creek Primary School

Willamette Primary School

#### Middle School Safe Routes to School

Athey Creek Middle School

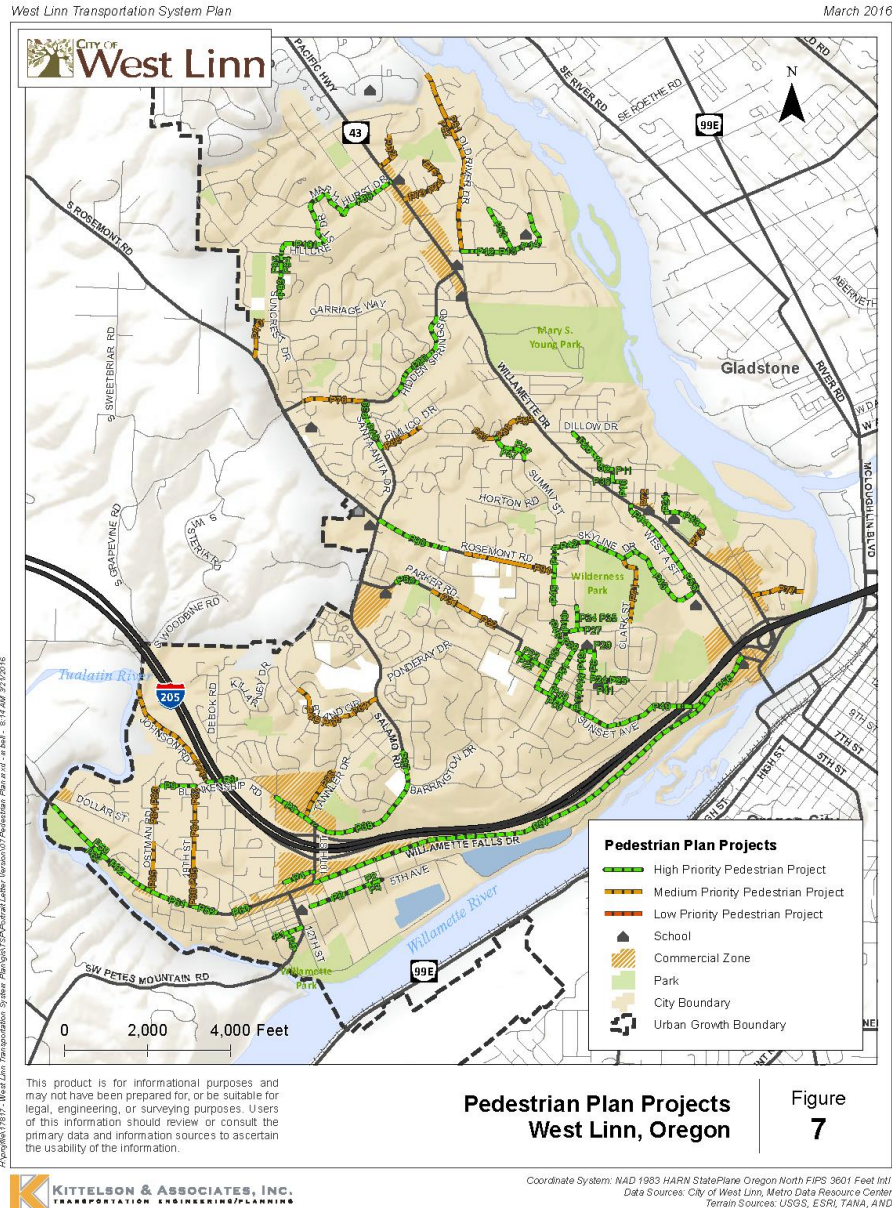
Athey Creek Middle School has no walking area. All students use transportation.

Meridian Creek Middle School

Rosemont Ridge Middle School



# Pedestrian Plan Projects



## Project Selection and Prioritization Process

- Projects were developed to address all gaps, deficiencies and future needs
- Projects were evaluated based on goals and desired outcomes
  - Goal 1: Safety – 22 points
  - Goal 2: Access – 20 points
  - Goal 3: Equity – 6 points
  - Concurrency – 12 points
  - Fiscal Efficiency – 4 pointsTotal 64 points
- Projects were prioritized based on the number of points and organized into high (over 30 pts), medium (21-30 pts), and low (0-21 pts)
- All high priority projects and some medium priority were included in the Financially Constrained Plan

# PEDESTRIAN PLAN PROJECTS

Pedestrian Plan Project List (Facts at a glance):

1. Total of **104 projects**. However, many projects have been broken up by segments and recorded as individual projects. Several projects can be consolidated into a common number.
2. Majority of the project types are **'Sidewalk projects'** with very few 'Study' and 'Interim' project types.
3. Approximately
  - 73% High priority projects
  - 25% Medium Priority projects
  - 2% Low Priority projects



# PEDESTRIAN PLAN PROJECTS

## Pedestrian Plan Improvement Projects - Updated March 2024

Map ID	Location	Type	Project Description	Priority	Status	Notes
P1	4th Avenue	Sidewalks	Install sidewalks on the south side of the roadway from 14th St to 12th St	HIGH	Incomplete	
P2	5th Avenue	Sidewalks	Install sidewalks on the north side of the roadway from 11th St to 7th St	HIGH	Partial	No sidewalk except for two property frontages.
P3	5th Avenue	Sidewalks	Install sidewalks on the south side of the roadway from 25 ft west of 8th St to 150 ft east of 8th St	HIGH	Incomplete	
P4	8th Avenue	Sidewalks	Install sidewalks on the south side of the roadway from 12th St to 400 ft east of 12th St	HIGH	Partial	Approx. 100' of sidewalk currently.
P5	13th Street	Sidewalks	Install sidewalks on the east side of the roadway from 100 ft north of Tualatin Ave to Tualatin Ave	HIGH	Partial	Missing less than 30' of sidewalk, existing sidewalk grown over with moss.
P6	Bittner Street	Sidewalks	Install sidewalks on the east side of the roadway from Oxford St to Long St	HIGH	Partial	Sidewalk only in front of school.
P7	Blankenship Road	Sidewalks	Install sidewalks on the north side of the roadway from 10th St to approximately 50 ft east of the Willamette Corporate Center driveway.	HIGH	Incomplete	
P8	Blankenship Road	Sidewalks	Install sidewalks on the north side of the roadway from approximately 400 ft west of Debok Rd to Johnson Rd.	HIGH	Incomplete	
P9	Blankenship Road	Sidewalks	Install sidewalks on the south side of the roadway from 19th St to approximately 175 ft east of Ostman Rd.	HIGH	Incomplete	
P10	Bonnet Drive	Sidewalks	Install sidewalks on the west side of the roadway from Oregon City Blvd to Oxford St	HIGH	Incomplete	
P11	Caufield Street	Sidewalks	Install sidewalks on both sides of the roadway from Tompkins St to Randall St.	HIGH	Incomplete	
P12	Cedar Oak Drive	Sidewalks	Install sidewalks on both sides of the roadway from Old River Dr to 200 ft west of Trillium Dr.	HIGH	Partial	Sidewalk on the north side from Old River Dr. to Trillium Dr. will be complete with Safe Routes to School project in summer of 2024.
P13	Cedar Oak Drive	Sidewalks	Install sidewalks on the north side of the roadway from 200 ft west of Trillium Dr to Trillium Dr.	HIGH	Under Construction	Will be complete with Safe Routes to School project in summer of 2024.
P14	Cedar Oak Drive	Sidewalks	Install sidewalks on the south/east side of the roadway from Trillium Dr to Elmran Dr.	HIGH	Incomplete	
P15	Cornwall Street	Sidewalks	Install sidewalks on both sides of the roadway from Oxford St to Sunset Ave.	HIGH	Incomplete	
P16	Davenport Street	Sidewalks	Install sidewalks on both sides of the roadway from Randall St to Buck St.	HIGH	Incomplete	
P17	Exeter Street	Sidewalks	Install sidewalks on both sides of the roadway from Lancaster St to Sunset Ave.	HIGH	Incomplete	
P18	Exeter Street	Sidewalks	Install sidewalks on the east side of the roadway from Long St to Lancaster Ave.	HIGH	Incomplete	
P19	Exeter Street	Sidewalks	Install sidewalks on the west side of the roadway from Oxford St to Long St.	HIGH	Partial	Sidewalk on east side, none west side.
P20	Hidden Springs Road	Sidewalks	Install sidewalks on the south side of the roadway from Carriage Way to Cottonwood Ct.	HIGH	Incomplete	
P21	Holmes Street	Sidewalks	Install sidewalks on the west side of the roadway from Buck St to Perrin St.	HIGH	Incomplete	
P22	Lancaster Street	Sidewalks	Install sidewalks on the south side of the roadway from Parker Rd to Cornwall St.	HIGH	Incomplete	
P23	Lancaster Street	Sidewalks	Install sidewalks on the north side of the roadway from approximately 175 ft east of Parker Rd to Cornwall St.	HIGH	Incomplete	
P24	Long Street	Sidewalks	Install sidewalks on both sides of the roadway from Bittner St to Simpson St	HIGH	Incomplete	
P25	Long Street	Sidewalks	Install sidewalks on the north side of the roadway from 125 ft east of Simpson St to 250 ft east of Simpson St.	HIGH	Complete	

## PROJECT STATUS

**COMPLETE**

**PARTIAL**

**UNDER  
CONSTRUCTION**

**INCOMPLETE**

P26	Lowry Drive/Barclay Street	Sidewalks	Install sidewalks on both sides of the roadway from Dillow Dr to Tompkin St.	HIGH	Incomplete	
P27	Oregon City Boulevard	Sidewalks	Install sidewalks on the north side of the roadway from Bonnet Dr to 350 ft east of Prospect St.	HIGH	Incomplete	
P28	Oxford Street	Sidewalks	Install sidewalks on the south side of the roadway from Bonnet Dr to Sussex St.	HIGH	Incomplete	
P29	Oxford Street	Sidewalks	Install sidewalks on the south side of the roadway from Exeter St to Bittner St.	HIGH	Complete	
P30	Parker Road	Sidewalks	Install sidewalks on both sides of the roadway from approximately 125 ft east of Noble Ln to approximately 100 ft west of Dillon Ln.	HIGH	Complete	
P31	Parker Road	Sidewalks	Install sidewalks on the north side of the roadway from approximately 150 ft east of Wild Rose Dr to 475 ft east of Wild Rose Dr.	MEDIUM	Complete	
P32	Parker Road	Sidewalks	Install sidewalks on the north side of the roadway from approximately 150 ft west of Damon Dr to 75 ft west of Chinook Ct.	MEDIUM	Complete	
P33	Perrin Street	Sidewalks	Install sidewalks on both sides of the roadway from Holmes St to Lewis St.	HIGH	Incomplete	
P34	Prospect Street	Sidewalks	Install sidewalks on the east side of the roadway from Knox St to Oregon City Blvd.	HIGH	Incomplete	
P35	Prospect Street	Sidewalks	Install sidewalks on the west side of the roadway from 125 ft south of Knox St to Oregon City Blvd.	HIGH	Incomplete	
P36	Randall Street	Sidewalks	Install sidewalks on both sides of the roadway from Caufield St to Davenport St.	HIGH	Incomplete	
P37	Salamo Road	Sidewalks	Install sidewalks on the west side of the roadway from approximately 750 ft south of Remington Dr to Barrington Dr.	HIGH	Incomplete	
P38	Salamo Road	Sidewalks	Install sidewalks on the north side of the roadway from Barrington Dr to 10th St.	HIGH	Under Construction	Multi-use path, no sidewalk. Will be complete in summer of 2024 with current Salamo project.
P39	Santa Anita Drive	Sidewalks	Install sidewalks on the east side of the roadway from Hidden Springs Rd to Clubhouse Cir.	HIGH	Incomplete	
P40	Santa Anita Drive	Sidewalks	Install sidewalks on the east side of the roadway from approximately 250 ft south of Clubhouse Cir to Pimlico Dr.	HIGH	Incomplete	
P41	Simpson Street	Sidewalks	Install sidewalks on both sides of the roadway from Long St to Charman St.	HIGH	Incomplete	
P42	Skyline Drive	Sidewalks	Install sidewalks on the north side of the roadway from Summit St to approximately 150 ft west of Firwood Dr.	HIGH	Incomplete	
P43	Skyline Drive	Sidewalks	Install sidewalks on the north side of the roadway from approximately 100 ft east of Firwood Dr to approximately 150 ft west of West A St.	HIGH	Incomplete	
P44	Summit Street	Sidewalks	Install sidewalks on the west side of the roadway from approximately 150 ft south of Skyline Dr to Rosemont Rd.	HIGH	Incomplete	
P45	Summit Street	Sidewalks	Install sidewalks on the west side of the roadway from approximately 150 ft south of Rosemont Rd to Oxford St.	HIGH	Incomplete	
P46	Summit Street	Sidewalks	Install sidewalks on the east side of the roadway from Gloria Dr to Oxford St.	HIGH	Under Construction	4979-4973 will be completed with Summit Street PI-23-03.
P47	Summit Street	Sidewalks	Install sidewalks on both sides of the roadway from Pimlico Dr to 150 ft south of Pimlico Dr.	HIGH	Incomplete	
P48	Summit Street	Sidewalks	Fill in the 65 ft gap in the sidewalk on the north side of the roadway approximately 350 ft south of Pimlico Dr.	HIGH	Incomplete	
P49	Sunset Avenue	Sidewalks	Install sidewalks on the north side of the roadway from Cornwall St to Willamette Falls Dr.	HIGH	Partial	Sidewalk on south side from Imperial Dr. to Spring Rock Cir., otherwise no sidewalk.
P50	Sunset Avenue	Sidewalks	Install sidewalks on the south side of the roadway from Cornwall St to approximately 150 ft west of Spring Rock Cir.	HIGH	Incomplete	

## PROJECT STATUS

COMPLETE

PARTIAL

UNDER  
CONSTRUCTION

INCOMPLETE



P51	Sussex Street	Sidewalks	Install sidewalks on both sides of the roadway from Oxford St to Sunset Ave.	HIGH	Incomplete	
P52	Tompkins Street	Sidewalks	Install sidewalks on both sides of the roadway from Lowry Dr to Caulfield St.	HIGH	Incomplete	
P53	Trillium Drive	Sidewalks	Install sidewalks on both sides of the roadway from Glen Terrace to 700 ft south of Glen Terrace.	HIGH	Incomplete	
P54	West A Street	Sidewalks	Install sidewalks on both sides of the roadway from approximately 250 ft east of Willamette Dr to Terrace Dr.	HIGH	Partial	Small property frontage improvements, otherwise no sidewalk.
P55	West A Street	Sidewalks	Install sidewalks on the north side of the roadway from Terrace Dr to Skyline Dr.	HIGH	Partial	Two property frontage improvements, otherwise no sidewalk.
P56	Willamette Falls Drive	Sidewalks	Install sidewalks on the south side of the roadway from West A St to Sunset Ave.	HIGH	Incomplete	
P57	Willamette Falls Drive	Sidewalks	Install sidewalks on the south side of the roadway from Sunset Ave to 10th St.	HIGH	Incomplete	
P58	Willamette Falls Drive	Sidewalks	Install sidewalks on the north side of the roadway from Dollar St (east) to 19th St.	HIGH	Partial	Sidewalk on Dollar St to 16th, and one property frontage.
P59	Willamette Falls Drive	Sidewalks	Install sidewalks on the north side of the roadway from Epperly Way to West Linn City Limits.	HIGH	Under Construction	Will be completed with Athey Creek project in summer of 2024.
P60	Willamette Falls Drive	Sidewalks	Install sidewalks on the south side of the roadway from 16th St to 200 ft west of 16th St.	HIGH	Incomplete	
P61	Willamette Falls Drive	Sidewalks	Install sidewalks on the south side of the roadway from approximately 500 ft east of 19th St to approximately 150 ft west of 19th St and from approximately 200 ft east of Ostman Rd to Ostman Rd.	HIGH	Incomplete	
P62	Willamette Falls Drive	Sidewalks	Install sidewalks on the south side of the roadway from Ostman Rd to West Linn City Limits.	HIGH	Incomplete	Ostman Rd to Epperly Way no sidewalk, otherwise will be included in Athey Creek project to be completed in summer of 2024.
P63	19th Street	Sidewalks	Install sidewalks on the west side of the roadway from Blankenship Rd to Nova Ct.	MEDIUM	Incomplete	
P64	19th Street	Sidewalks	Install sidewalks on both sides of the roadway from Nova Ct to Dollar St.	MEDIUM	Incomplete	
P65	19th Street	Sidewalks	Install sidewalks on both sides of the roadway from Dollar St to High Touch Ct.	MEDIUM	Partial	Sidewalk from High Touch Ct to 1782 on east side, no sidewalk west side.
P66	19th Street	Sidewalks	Install sidewalks on the west side of the roadway from High Touch St to Dollar St.	MEDIUM	Partial	Same as P65.
P67	Bland Circle	Sidewalks	Install sidewalks on the north side of the roadway from Salamo Rd to Tannler Dr.	MEDIUM	Incomplete	
P68	Bland Circle	Sidewalks	Install sidewalks on the north side of the roadway from Tannler Dr to approximately 100 ft east of Falcon Dr.	MEDIUM	Complete	
P69	Bland Circle	Sidewalks	Install sidewalks on the north side of the roadway from Falcon Dr to approximately 400 ft north of Fircrest Dr.	MEDIUM	Partial	Missing one approx. 50' section.
P70	Carriage Way	Sidewalks	Install sidewalks on the north-west side of the roadway from approximately 350 ft west of Suncrest Dr to Rosemont Rd.	MEDIUM	Incomplete	
P71	Clark Street	Sidewalks	Install sidewalks on both sides of the roadway from Skyline Dr to approximately 150 ft north of Windsor Blvd.	MEDIUM	Incomplete	
P72	Failing Street	Sidewalks	Install sidewalks on the east side of the roadway from approximately 200 ft north of Hwy 43 to Buck St.	MEDIUM	Incomplete	
P73	Fairview Way	Sidewalks	Install sidewalks on both sides of the roadway from approximately 200 ft east of Hwy 43 to approximately 100 ft west of Rose Way.	MEDIUM	Incomplete	
P74	Fairview Way	Sidewalks	Install sidewalks on the south side of the roadway from approximately 100 ft west of Rose Way to Chippewa Ct.	MEDIUM	Incomplete	
P75	Fairview Way	Sidewalks	Install sidewalks on both sides of the roadway from Chippewa Ct to the roadway terminus.	MEDIUM	Incomplete	
P76	Hidden Springs Road	Sidewalks	Install sidewalks on the south side of the roadway from Suncrest Dr to Santa Anita Dr (maintaining existing curb line).	MEDIUM	Partial	No sidewalk from approx. 100' north of Bay Meadows Dr. to Santa Anita Dr.

## PROJECT STATUS

**COMPLETE**

**PARTIAL**

**UNDER  
CONSTRUCTION**

**INCOMPLETE**

P77	Holly Street	Sidewalks	Install sidewalks on both sides of the roadway from approximately 150 ft east of Hwy 43 to River St.	MEDIUM	Incomplete	
P78	Johnson Road	Sidewalks	Install sidewalks on the west side of the roadway from Blakenship Rd to West Linn City Limits.	MEDIUM	Incomplete	
P79	Lewis Street	Sidewalks	Install sidewalks on both sides of the roadway from Hwy 43 to Perkins St.	MEDIUM	Incomplete	
P80	Marylhurst Drive	Sidewalks	Install sidewalks on one side of the roadway from Willamette Dr to Hillcrest Dr (east).	HIGH	Incomplete	Sidewalk on south side from Midhill Cir to Willamette Dr. expected to be installed by 2025.
P81	Old River Drive	Sidewalks	Install sidewalks on the east side of the roadway from approximately 100 ft north of Riverside Ct to Cedar Oak Dr.	MEDIUM	Partial	Two small property frontages, no sidewalk otherwise.
P82	Old River Drive	Sidewalks	Install sidewalks on the west side of the roadway from approximately 200 ft north of Riverside Ct to Cedar Oak Dr.	MEDIUM	Partial	Two small property frontages, no sidewalk otherwise.
P83	Ostman Road	Sidewalks	Install sidewalks on the east side of the roadway from Blankenship Rd to Michael Dr.	MEDIUM	Partial	Sidewalk until 2270 Ostman Rd.
P84	Ostman Road	Sidewalks	Install sidewalks on both sides of the roadway from Michael Dr to Fields Dr-Short St.	MEDIUM	Partial	No sidewalk on east side until storm facility, west side missing 30' from Michael Dr.
P85	Ostman Road	Sidewalks	Install sidewalks on both sides of the roadway from Dollar St to Willamette Falls Dr.	MEDIUM	Partial	Two property frontages on the west side, three on the east side + Bexhill. 1785 no sidewalk.
P86	Pimlico Drive	Sidewalks	Install sidewalks on the south side of the roadway from Santa Anita Dr to approximately 100 ft west of Palomino Way (west).	MEDIUM	Incomplete	
P87	Pimlico Drive	Sidewalks	Install sidewalks on the south side of the roadway from Palomino Way (east) to Pimlico Terrace.	MEDIUM	Incomplete	
P88	Pimlico Drive	Sidewalks	Install sidewalks on both sides of the roadway from Pimlico Terrace to Treetop Ln.	MEDIUM	Incomplete	
P89	Pimlico Drive	Sidewalks	Install sidewalks on the south side of the roadway from Treetop Ln to Willamette Dr.	MEDIUM	Incomplete	
P90	Rosemont Road	Sidewalks	Install sidewalks on the south side of the roadway from Santa Anita Dr to Wild Rose Dr.	HIGH	Complete	
P91	Rosemont Road	Sidewalks	Install sidewalks on both sides of the roadway from Shannon Ln to Summit St.	MEDIUM	Partial	Intermittent on North side, missing on South side.
P92	Shady Hollow Way	Sidewalks	Install sidewalks on the south side of the roadway from approximately 150 ft east of Hwy 43 to Arbor Dr.	MEDIUM	Incomplete	No sidewalk needed.
P93	Suncrest Drive	Sidewalks	Install sidewalks on the east side of the roadway from approximately 250 ft south of Ridgebrook Dr (north) to Ridgebrook Dr (north).	HIGH	Incomplete	
P94	Suncrest Drive	Sidewalks	Install sidewalks on the east side of the roadway from approximately 150 ft north of Ridgebrook Dr (north) to Hillcrest Dr.	HIGH	Partial	Sidewalk stops at Valley View Dr.
P95	Suncrest Drive	Sidewalks	Install sidewalks on the west side of the roadway from approximately 250 ft north of Ridgebrook Dr (north) to Hillcrest Dr.	HIGH	Partial	Sidewalk stops at Valley View Dr.
P96	Tannler Drive	Sidewalks	Install sidewalks on both sides of the roadway from Blankenship Rd to Greene St.	MEDIUM	Incomplete	
P97	Clark Street	Interim	Install a mixed-use shoulder on one side of the roadway from Skyline Dr to approximately 150 ft north of Windsor Blvd.	LOW	Incomplete	Small dirt walking path on east side from Windsor Terrace to approximately 50' from Wilderness Park.
P98	Johnson Road	Interim	Install a mixed-use shoulder on one side of the roadway from Blankenship Rd to West Linn City Limits.	LOW	Incomplete	No shoulder.
P100	Old River Drive	Interim	Install a mixed-use shoulder on the east side of the roadway from West Linn City Limits to Cedar Oak Dr.	LOW	Incomplete	No shoulder.
P101	Hillcrest Drive	Sidewalks	Install sidewalks on one side of the roadway from Suncrest Dr to Marylhurst Dr.	HIGH	Incomplete	
P102	Willamette Falls Drive	Interim	Improve pedestrian crossing at Fields Bridge Park.	HIGH	Complete	Pedestrian cross signs present.
P103	Hidden Springs Road	Interim	Improve pedestrian crossing at Suncrest Dr.	HIGH	Complete	Pedestrian push button present across Hidden Springs Rd.

## PROJECT STATUS

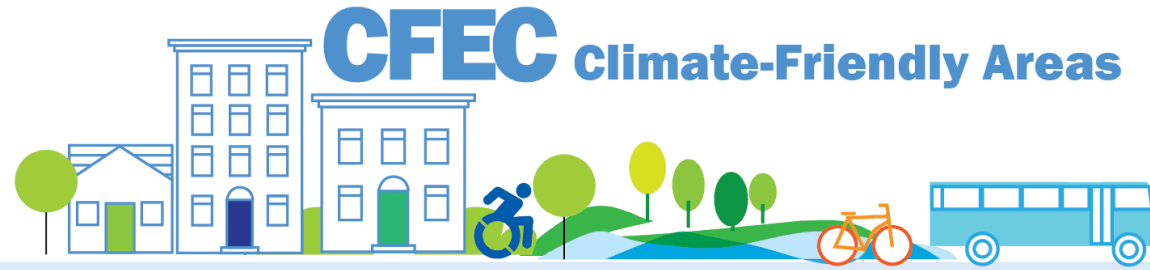
COMPLETE

PARTIAL

UNDER  
CONSTRUCTION

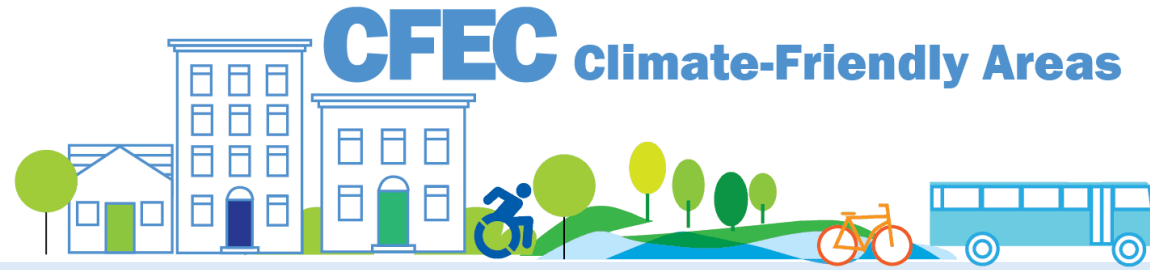
INCOMPLETE





## **Prioritization Framework based on CFEC RULE 660-012-0520 Pedestrian System Projects**

- (1) Cities and counties shall **develop a list of pedestrian system projects** that would **address all the gaps and deficiencies in the pedestrian system** identified by the city under OAR 660-012-0500(4).
- (2) Cities and counties shall **develop pedestrian project prioritization factors** that are able to sort the list of pedestrian system projects into a prioritized list of pedestrian system projects. Cities must develop pedestrian project prioritization factors by engaging underserved populations as provided in OAR 660-012-0130.
- (3) Cities and counties shall use the following factors when prioritizing pedestrian system projects:
  - (a) Pedestrian system investments in **climate-friendly areas and Metro Region 2040 centers**;
  - (b) Pedestrian system investments in areas with **concentrations of underserved populations**;
  - (c) Pedestrian system investments in areas with **pedestrian safety risk factors such as roadways with high speeds and high traffic volumes**;
  - (d) Pedestrian system investments in **areas with reported crashes involving pedestrian serious injuries and deaths**;



## **Prioritization Framework based on CFEC RULE 660-012-0520 Pedestrian System Projects**

- (e) Pedestrian system investments that provide **access to key pedestrian destinations** identified as provided in OAR 660-012-0360;
- (f) Pedestrian system investments that **will connect to, fill gaps in, and expand the existing pedestrian network**;
- (g) Pedestrian system investments that **prioritize pedestrian travel consistent with the prioritization factors** in OAR 660-012-0155; and
- (h) Where applicable, pedestrian system investments that **implement a scenario plan** approved by order as provided in OAR 660-044-0120.

(4) The transportation system plan must include a description of the prioritization factors and method of prioritizing pedestrian projects used to develop the prioritized list of pedestrian system projects.

# Transportation Funding for Pedestrian Improvements

## Private Funding:

- Private Developer

## Local Funding Mechanisms:

- Street Utility Fees / Road Maintenance Fees
- Transportation System Development Charge (SDC)
- Pedestrian and Bicycle System Development Charge (SDC)

## State and Federal Grants:

- Multi-modal Active Transportation Fund
- Safe Routes to School (SRTS)
- Oregon Community Paths (OCP)
- Sidewalk Improvement Program (SWIP)



# Metro Regional 2040 Centers

- Central city
- Regional center
- Town center
- Station communities
- Main streets
- Corridors

