



attn: Sara
3 pages

If you need help placing your order, please call
toll-free: 1-877-4-OREPAC (1-877-467-3722)

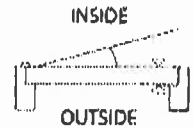
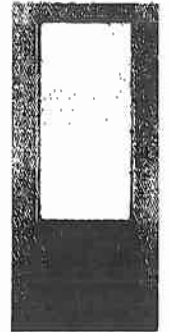
Order# 8497, Item# 2

Product Type	Exterior Doors	Sidemark
Product Line	Therma-Tru Steel and Fiberglass Doors	
Door Configuration	Single Prehung	Notes
Door Handing	Left Hand Inswing (A)	
Call Out Height	6/8	
Call Out Width	2/8	

	Qty	Description	Price
Door Category		Clear Glass Doors	
Material		Fiberglass	
Door Texture		Fiber-Classic Mahogany	
Door Thickness	1	2/8, 6/8, Fiber-Classic Mahogany, Clear Lite, 3/4 Lite 2 Panel	\$411.13
Insert Shape	1	Double Bore (Lockset w/ Deadbolt), 2 3/8"	\$5.01
Glass Collection	1	4 9/16", Paint Grade	\$95.81
Grille Type	1	Bronze ADA Sill	\$25.03
	1	Door Protection Cover	\$3.56

Net Unit Height	81 5/8"	Rough Opening Height	82"
Net Unit Width	33 1/2"	Rough Opening Width	34"

Quantity: 1 Unit Price \$540.54

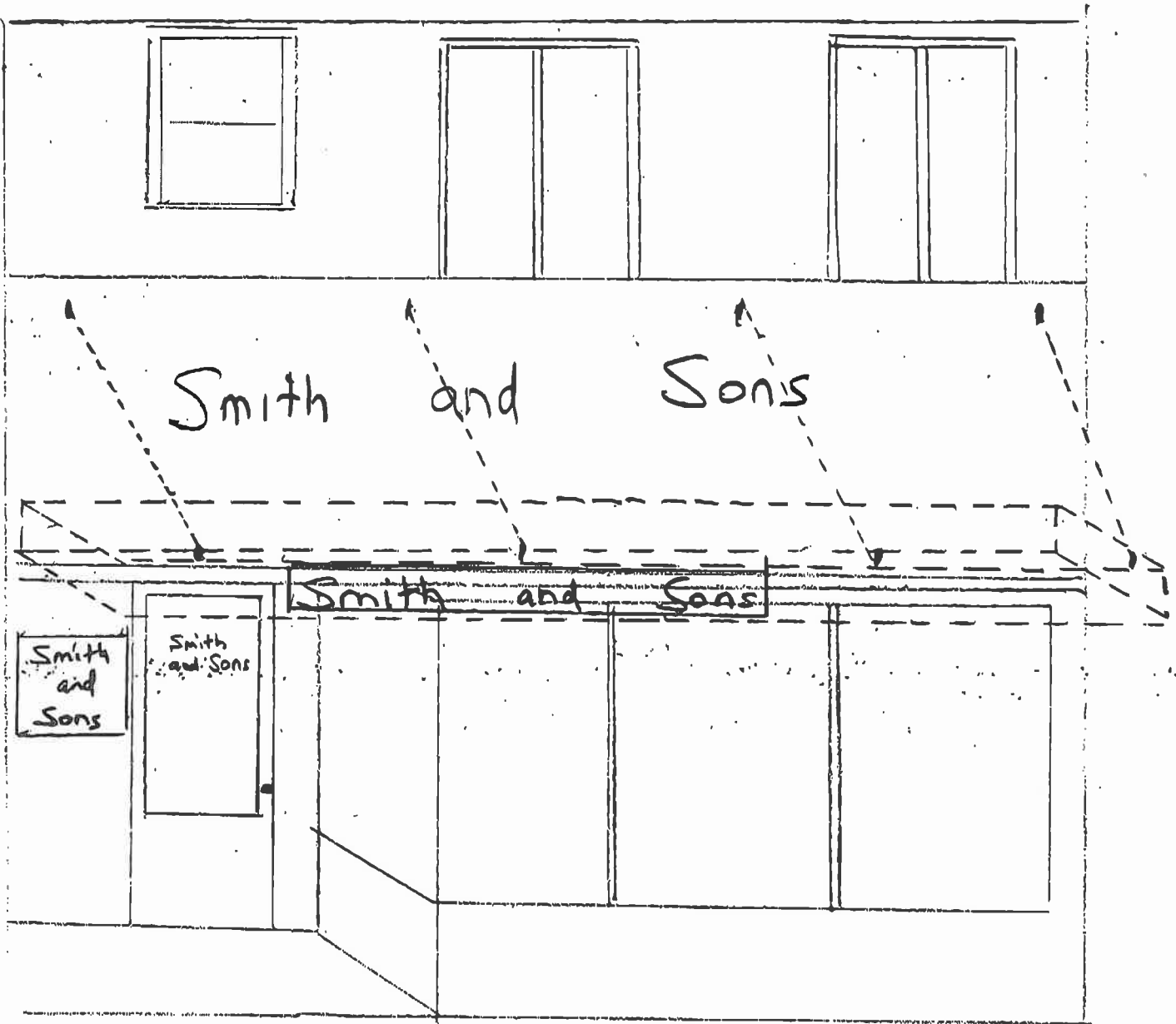


DR 13 - 03
22820 Willamette Dr. #6

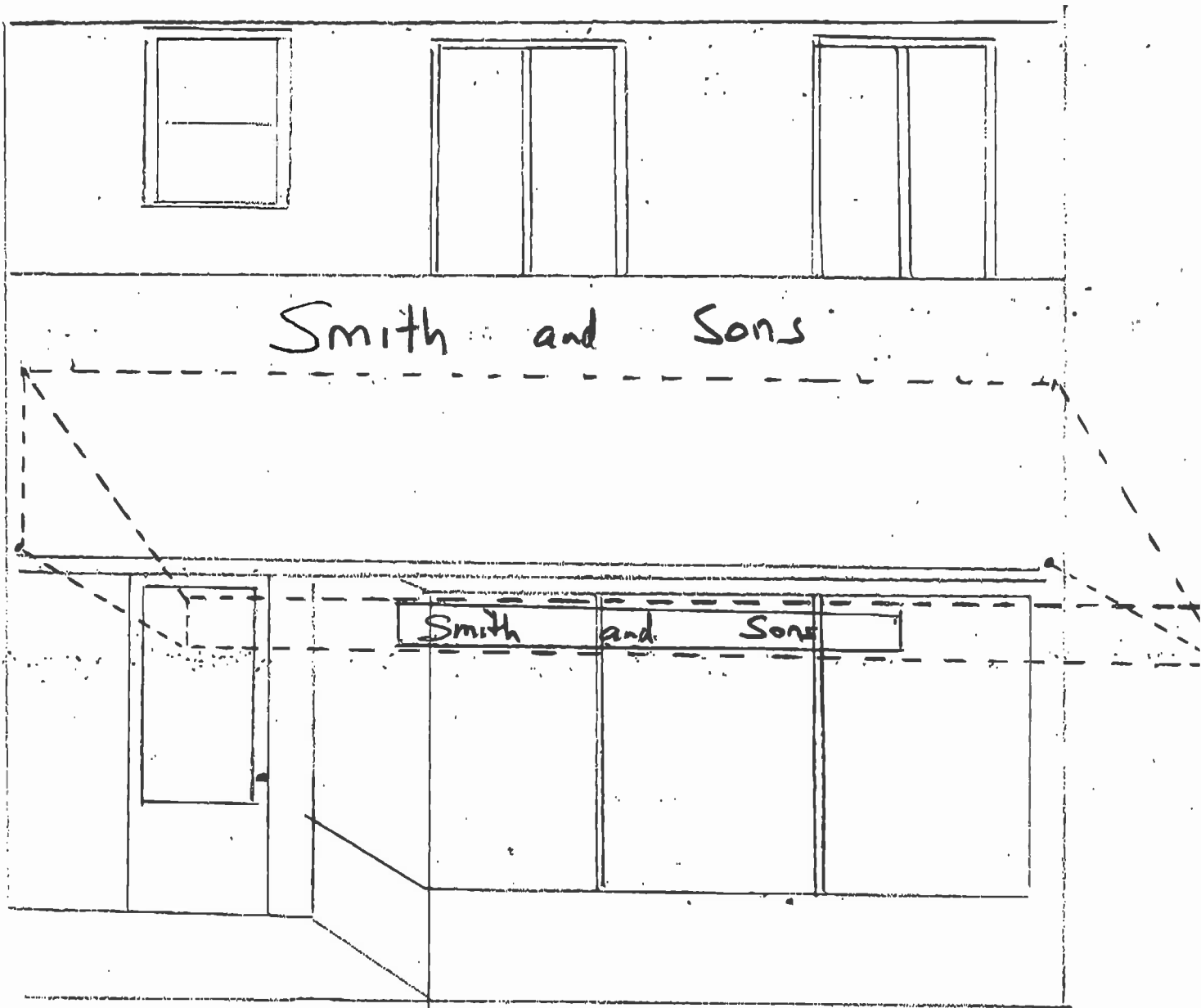
I am proposing this door.
Material is fiberglass as wood is
not suitable for weather-access use.

I am enclosing drawing for
awnings & signage.

I have to plans to change
the facade in any other way.



Flat awning
chain - supported
w/ signage



canopy - style
Aluminum slat awning
w/ signage

River City Glass

DATE 2 / 4 / 13

Commercial Glazing Contractors

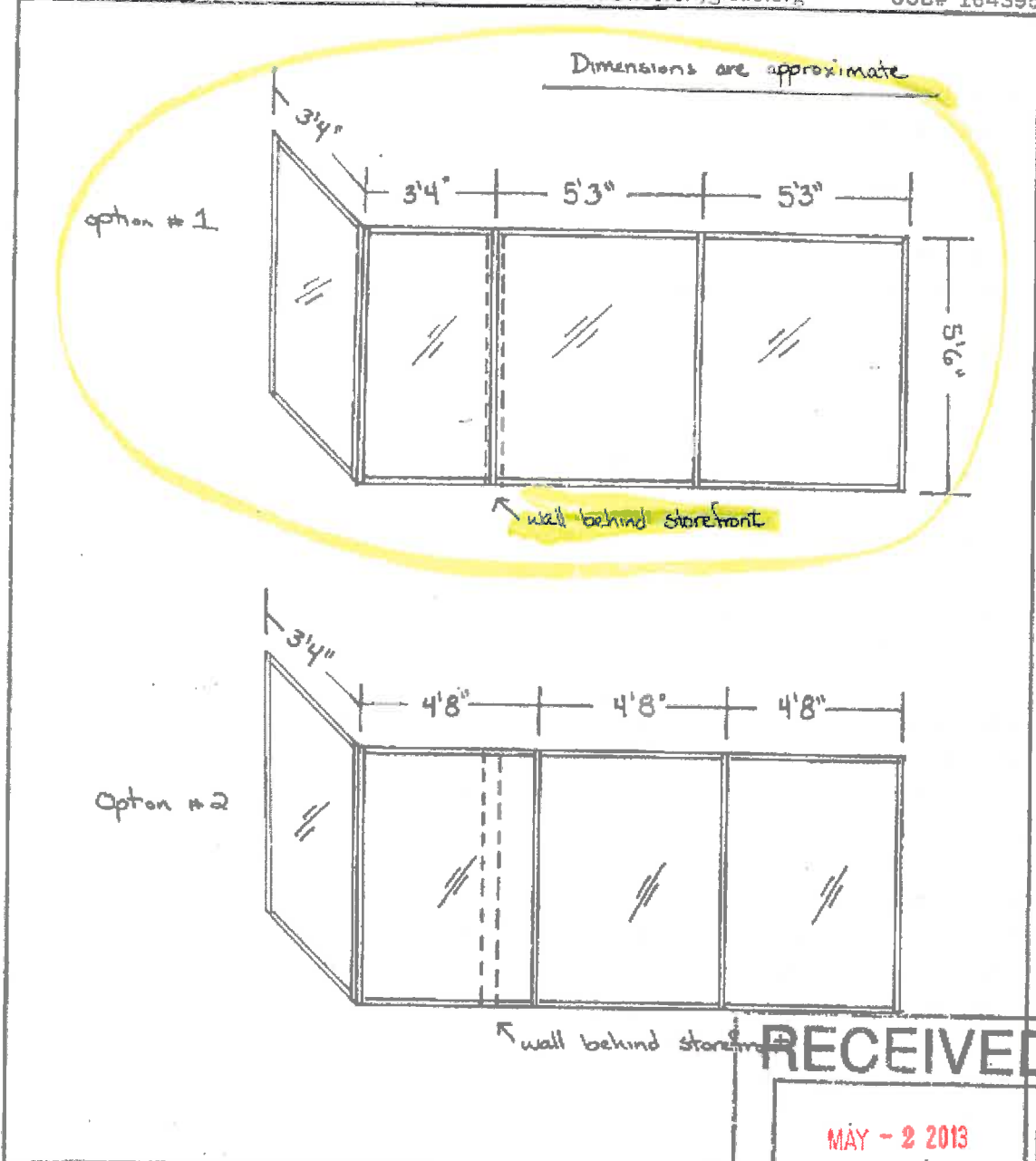
JOB NAME Bridgefront Apts.

(503) 657-5200

Fax (503) 656-5376

info@rivercityglass.org

CCB# 164395



RECEIVED
MAY - 2 2013
PLANNING & BUILDING
CITY OF WEST LINN
INT. _____ TIME _____