



REQUEST FOR PROPOSAL  
HISTORIC PRESERVATION INVENTORY WORK  
CITY OF WEST LINN

OCTOBER 15, 2009



October 15, 2009

Mr. Tom Soppe, Associate Planner  
City of West Linn  
22500 Salamo Road  
West Linn, OR 97068

RE: RFP Historic Preservation Inventory Work

Dear Tom,

Peter Meijer Architect, PC is pleased to respond to the City of West Linn's request for Consultant Services to assist with Historic Preservation Inventory Work. PMA has a staff of four people including Intern Architect Samantha Polinik who based her Masters Thesis on the urban planning and development adjacent to the historic West Linn Paper Mill Co.. Siegle Planning Services, LLC, code writing consultant, will be part of the project team and support PMA's extensive historic experience.

Our office shall provide a Research Draft to city staff for review and acceptance and then perform the Survey work following Oregon State Historic Preservation Office guidelines. Data shall be collected and entered into the SHPO database using MS Access software. Products shall include photographing each resource and providing a map indicating location

Peter Meijer Architect, PC dedicated staff and professional consultants provide the City of West Linn a team with demonstrated capabilities to perform historic inventory work. As Principal, I will represent the firm in any negotiations and sign any contract resulting from the negotiations. My contact information is as follows:

Peter R. Meijer, AIA  
Peter Meijer Architect, PC  
710 NE 21st Avenue, Suite 200  
Portland, OR 97232

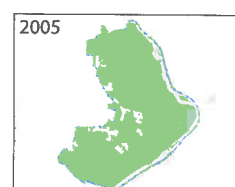
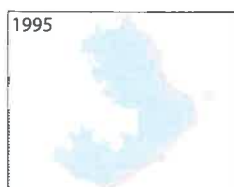
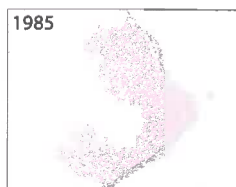
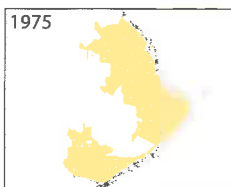
Tel.: 503.517.0283  
Fax.: 503.517.0285  
peterm@pmapdx.com

I look forward to working with you and the City of West Linn.

Sincerely yours,  
Peter Meijer Architect, PC

Peter R. Meijer, AIA, NCARB  
Principal

Annexation of West Linn over 30 years (courtesy of [www.westlinnoregon.gov](http://www.westlinnoregon.gov))





**OBJECTIVES & SCOPE OF WORK 01**

*STATEMENT OF WORK  
WEST LINN HISTORIC RESOURCES  
DESCRIPTION OF SERVICES & PRODUCT*

**APPROACH/METHODOLOGY/COMMUNICATION 03**

*OUTLINE OF TASKS  
MANAGEMENT PLAN*

**QUALIFICATIONS & EXPERIENCE 05**

*FIRM QUALIFICATIONS  
INDIVIDUAL RESUMES  
PROJECT EXPERIENCE  
REFERENCES*

**SCHEDULE & BUDGET 14**

*COST PROPOSAL  
TASKS SCHEDULE*



## STATEMENT OF WORK

Peter Meijer Architect, PC is pleased to respond to the City of West Linn's request for Professional Services. PMA has a staff of four people including an Architectural Historian, Kristen Minor, who leads the firm's historic inventory work.

PMA shall perform the components of work as identified in the RFP including a review of the Willamette Historic District, review the resources identified in the Willamette, Bolton, and Sunset neighborhoods, and review the draft standards written for the Holly-Grove area of Bolton.

PMA looks forward to conducting further reconnaissance level work in the Bolton and Sunset neighborhoods. With the assistance of Scot Siegel, Siegel Planning, PMA will review existing Comprehensive Development Code, analyze the effectiveness of existing Conservation Districts, and recommend potential design standards for the industrial area surrounding the West Linn Paper Co. mill site. Samantha Polink, PMA Intern Architect, intensely studied the Mill site and surrounding neighborhoods as part of her master thesis at the University of Oregon.

Our office shall provide a Research Draft to city staff for review and acceptance and then perform the Inventory Work following Oregon State Historic Preservation Office guidelines. Data shall be collected and entered into the SHPO database using MS Access software. Products shall include photographing each resource and providing a map indicating location.

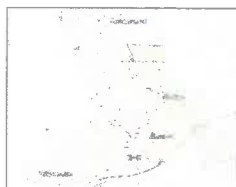
Following our data gathering and entry, PMA will present our findings to the City of West Linn staff and the Historic Commission along with our recommendations.

## WEST LINN HISTORIC RESOURCES

In the summer of 2006, the City of West Linn commissioned a Historic Context Statement for the Willamette and Holly-Grove Neighborhoods. This document defined the major periods of West Linn history and established the historical context for each of the periods. In addition, the Context Statement recommended, among other items, that the Willamette Historic District be nominated to the National Register of Historic Places which the City of West Linn has completed. Other recommendations included resurveying areas to update the resource information and creating design guidelines both inside the district and along the district perimeter.

The 2006 Context recommended that the Holly-Grove neighborhood, whose period of significance is between 1920 – 1940, be further protected via a city designated Conservation District and new design guidelines.

In February 2009, the City of West Linn submitted their growth plan to Metro outlining development and preservation goals of the City. The Willamette Mill site was identified as a potential development area with sensitivity to the historic nature of the site. The Metro report also mentioned the pursuit of a National Heritage Area around the mill.





## OBJECTIVES & SCOPE OF WORK

### DESCRIPTION OF SERVICES & PRODUCT

#### PROJECT START

- PMA will establish a project schedule and delivery dates for review and approval.
- PMA will review the existing Historic Context Statement for the Willamette and Holly Grove Neighborhoods and other documentation of West Linn historic resources.
- PMA will write the Statement of Project Objectives, define the resource Boundaries, and prepare the field forms.

#### Standards for Preservation Planning.

- Field recordation will utilize the Historic Site Short Form and include photographing each resource and entering Property Characteristics.
- Data shall be entered directly into MS Access on lap top/hand held computers.

#### CONDUCT INVENTORY

- PMA will conduct the inventory following SHPO Guidelines for Conducting Historic Resource Surveys in Oregon. The inventory will also be conducted in compliance with the Secretary of the Interior's

#### SURVEY RESULTS AND RECOMMENDATIONS

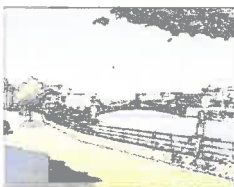
Once the site survey teams have completed the field inventory work, PMA's project manger will analyze the field survey data, further elaborate upon the descriptions, narratives, and context statements, and provide the City of West Linn with Recommendations for further study and potential National Register eligible properties.

(printed date: 2/17/2009)

### Architectural Survey Data for OSU 2007 MPS Survey Oregon State Historic Preservation Office

Page 13 of 21

Address/ Property Name	Extl Rt	Yr(s) NR Bldg	Materials	Arch Classif/Styles	Orig. Use/ Plan (Type)	RLS / ILS Dates	Listed Date
1420 SW Jefferson Ave Cathelan Hall	6	NP c.1963	Concrete: Other/Undefined		Education-Related	5/16/2007	
1500 SW Jefferson Ave Kerr Administration BLDG <i>1971-? - Administration Building</i>	6	NP c.1971	Concrete: Other/Undefined		Administrative Facility	5/16/2007	
1601 SW Jefferson Ave Pharmacy	5	EC NHD 1924	Standard Brick Cast Stone	Colonial Revival	College School (General)	5/16/2007	
1701 SW Jefferson Ave Gladys Valley Gymnastics Center <i>1898 - Armory and Gymnasium; 1936-50</i>	2	EC NHD 1898	Horizontal Board Stone:Other/Undefined	Indefinite	RECR/CULTURE: General School (General)	5/16/2007	
1800 SW Jefferson Way McAlexander Field House <i>Originally named after Ulysses Grant</i>	2	EC NHD 1911	Poured Concrete	Exotic Revival	RECR/CULTURE: General School (General)	5/16/2007	
2150 SW Jefferson Way Snell Hall/MU East	5	NP c.1958	Metal Sheet		Education-Related	5/16/2007	
2250 SW Jefferson Way Waldo Hall <i>1907 - Clara Hanson Hall</i>	4	EC NHD 1907	Standard Brick	Romanesque	College School (General)	5/16/2007	
2450 SW Jefferson Way Langston Hall <i>1915-early 1970s - Men's Gymnasium</i>	2	EC NHD 1915	Standard Brick	Mediterranean Revival	College School (General)	5/16/2007	
2501 SW Jefferson Way Memorial Union Bldg	3	ES NHD 1928	Standard Brick Stone:Other/Undefined	Neo-Classical	College School (General)	5/16/2007	





## OUTLINE OF TASKS

### INTRODUCTION

The primary purpose of a Reconnaissance Level Survey is to provide a “first cut” of buildings in a given area that appear to be eligible for listing in the National Register of Historic Places. A Reconnaissance Level Survey involves only a visual evaluation of properties, not an assessment of associated historical events or individuals. Peter Meijer Architect, PC will perform a “Standard” Level RLS of the remaining areas of the Buck Street area that were not completed in the previous 2008-2009 CLG Grant cycle and as much RLS work in the Bolton and Sunset neighborhoods.

### DESCRIBE THE SURVEY PARAMETERS

Prior to conducting our field work, PMA will write a summary document describing the Survey Parameters including the project objectives, identification of the survey area boundary on a map of the neighborhood, and provide a project time line. The Summary document is provided to the City of West Linn to offer an opportunity for input by interested parties including the community and the State Historic Preservation Office.

### CONDUCT THE SURVEY

Standard RLSs are conducted along streets in a systematic building-by-building fashion and grouped within their appropriate directional quadrants (NW, SW, E, W, etc.). Using forms from the Oregon Historic Sites Database, PMA will record existing building information capturing material, style, and other character attributes along with the building address, original use, resource type, and creating a survey map. In addition, Standard RLSs require Photographic Documentation using digital images printed with high-quality ink and paper.

### ENTER DATA

Field documentation will be entered into the Historic Sites Database provided by the SHPO.

### CONSERVATION OVERLAY

Seigel Planning will lead the effort in writing the draft and final versions of the Paper Mill Conservation Overlay code recommendation. PMA will coordinate and Seigel Planning will conduct a workshop with City staff followed by a presentation to the public





# PETER MEIJER ARCHITECT, PC

## APPROACH/METHODOLOGY/COMMUNICATION

### MANAGEMENT PLAN

As a small office, the Project Team staff identified will be involved in all aspects and phases of the work from initial Kick-off meetings, research, field work, and survey data entry, to the delivery of the work products.

For the duration of the project, Peter Meijer, Principal, will perform quality control and project review while Kristen Minor, Project Manager, will be the day-to-day contact as well as lead the PMA team during field work and develop the project deliverables.

Samantha Polinik, Intern Architect will be a member of the field team, perform data entry, and with her thesis project experience, help develop recommendations for the intended paper mill area conservation overlay.

Peter Meijer Architect, PC anticipates receiving the following information from City of West Linn staff:

- A copy of the existing historic resource information.
- City staff's initial thoughts, ideas, and desires regarding the work program, products, and presentation.
- Availability from time to time to assist in project coordination.

Our office is appreciative of staff review of draft products and welcomes comments to improve the process and success of the project.

### FIRM QUALIFICATIONS

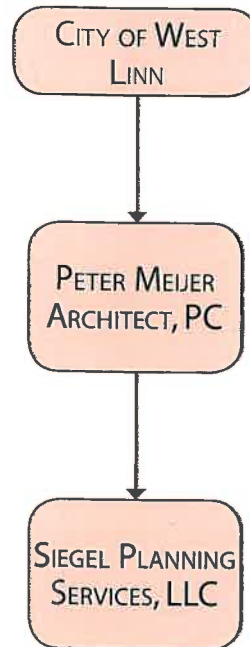
#### PETER MEIJER ARCHITECT, PC

Established in 2003 to provide specialized historic services, Peter Meijer Architect, PC is a certified Emerging Small Business within the State of Oregon. PMA provides two categories of services: Technical Consulting and Historic Consulting Services.

#### HISTORIC CONSULTING

Peter Meijer Architect, PC assists Owners of older and historic properties with condition and context assessments, historic inventories, applications for nomination to the National Register of Historic Places, historic design review, and application for historic tax credits. PMA facilitates communication between the property Owners and the review agencies to assure information is adequately conveyed during the project duration. We strive to provide the Owner with establishing a balance between stewardship and progression by establishing criteria from which our clients are able to make resource decisions.

Peter Meijer Architect completed a Historic Preservation Plan (HPP) in February 2009 for Oregon State University. PMA identified the funding source, The Getty Foundation Campus Heritage Grant, and assisted the OSU Foundation in writing and procuring the funding. Subsequently, PMA produced several documents as part of the HPP including an



# PETER MEIJER ARCHITECT, PC

## QUALIFICATIONS & EXPERIENCE



Intensive Level Survey (ILS) of the Corvallis Campus, a National Register OSU Historic District, Design Guidelines for the District, City of Corvallis zoning code revisions to correspond with the District, and campus signage to highlight the District. PMA also produced a self-guided walking tour brochure of the historic District for OSU visitors.

Documentation of the OSU ILS followed the Oregon State Historic Preservation Office MS Access database as well as following National Park Service guidelines. PMA coordinated our staff, the work of our sub-consultants, and, at OSU's request, PMA included student interns as part of the data / survey assessment team. The OSU HPP was completed within the one year time frame determined by the granting agency.

Additional ILS contracts have included a state-wide survey and documentation of over 200 depression-era structures for the Washington State Parks and Recreation Commission in 2001. Peter Meijer led two teams consisting of two staff members per team plus a Depression-era historian for a six month, intensive data gathering process. The teams were able to cover the entire State of Washington within the one year contract period and document existing conditions, prepare context statements, and write comments regarding the integrity of each structure. The results of the survey were issued in a nine volume set of three-ring binders and used by WSPRC staff to develop funding strategies to forward to the Washington State legislature.

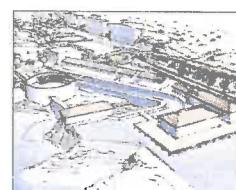
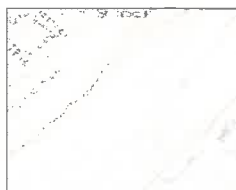
With an expected completion date of Winter 2010, PMA is involved in the initial stages of citizen advocacy survey and assessment of the Laurelhurst neighborhood involving over 400 properties both residential and commercial. The purpose of the survey is to update an existing volunteer survey, produce an ILS document, and determine the eligibility of creating a residential Historic District.

### SIEGEL PLANNING SERVICES, LLC

Siegel Planning was founded in 2004 by Scot Siegel, AICP, LEED AP, to provide individualized service to public and private sector clients with a commitment to sustainable development. Siegel Planning provides land use master planning, code development, urban design, and plan implementation services for local government clients. The firm has extensive experience preparing zoning ordinances, design standards, and administrative procedures, and advising local decision-making bodies and developers on land use matters.

Siegel Planning commits to only a handful of select projects throughout the year, and so are able to provide personal service that far exceeds that of larger firms. All contracting, bookkeeping, and other project administrative functions are managed in-house. Because Siegel Planning's overhead is lower than that of larger firms, services are delivered cost-effectively and with direct, day-to-day involvement of the principals.

Siegel Planning is committed to sound project management and customer service. Careful scope preparation, adherence to project work plans, schedules and budgets, proper resource allocation, and clear communication within our team and with our clients keeps us all on-task and ensures cost-effectiveness.







# PETER MEIJER ARCHITECT, PC

## QUALIFICATIONS & EXPERIENCE

### INDIVIDUAL RESUMES

**PETER R. MEIJER AIA, PRINCIPAL**  
**PETER MEIJER, ARCHITECT, PC**

**EDUCATION:**

University of Illinois, M. Arch 1982  
St. Olaf College, BA Biology 1979

**REGISTRATION:**

Architect, NCARB certified  
State of Oregon  
State of Washington

**TECHNICAL SOCIETIES:**

2001 - 2008     APTI President, NW  
                         Chapter  
2006 - 2008     Commissioner, Portland  
                         Historic Landmarks  
                         Commission  
2003 - 2008     Board Member, Friends of  
                         Timberline Lodge  
2001 - 2004     Chair, Historic Resource  
                         Committee, AIA Portland

**WORK HISTORY:**

2003 - Pres.     Principal, Peter Meijer  
                         Architect, PC, Portland, OR

**PROJECT ROLE:**

Principal-in-Charge

Peter has 25 years of professional experience with an emphasis on the preservation and renovation of historic structures. He provides technical consultant work on historic structures for private, public, and institutional clients. Work includes projects on university campuses in Oregon and Washington, indefinite quantity contracts with the National Park Service and the General Service Administration, and work on unique historic structures. He has performed work on historic structures in Oregon, Washington, Illinois and North Dakota.

**KRISTEN MINOR, ARCHITECTURAL HISTORIAN**  
**PETER MEIJER ARCHITECT, PC**

**EDUCATION:**

Rice University, B Arch 1990  
Rice University, BA 1988

**REGISTRATION:**

Architect, State of New York

**WORK HISTORY:**

2008 - Pres.     Historian, Peter Meijer  
                         Architect, PC, Portland, OR  
1998 - 2008     City Planner,  
                         Bureau of Development  
                         Services

**PROJECT ROLE:**

Team Leader, Project  
Manager; Daily Contact

Kristen has worked on a variety of similar projects including the Design Guidelines for King's Hill Historic District, the Portland update and re-write of the Central City Fundamental Design Guidelines, the study of a new design district and possible new historic sign district along Interstate Avenue, and the re-write of the historic Skidmore/Old Town Design Guidelines.

**SAMANTHA B. POLINIK, INTERN ARCHITECT**  
**PETER MEIJER ARCHITECT, PC**

**EDUCATION:**

University of Oregon, M. Arch 2009  
University of Maryland, BA 2004

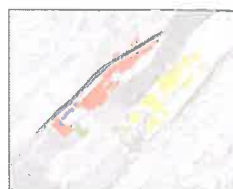
**WORK HISTORY:**

2008 - Pres.     Intern Architect, Peter  
                         Meijer Architect, PC,  
                         Portland, OR  
2004 - 2007     Intern Architect, Seth Harry  
                         & Assoc., Woodbine, MD

**PROJECT ROLE:**

Project Support

Samantha completed her M. Arch thesis project in June of 2009 which focused on the redevelopment of the Willamette Falls area, including Moore Island. Snapshots from her project can be seen throughout this RFP in the image row along the bottom.



# PETER MEIJER ARCHITECT, PC

## QUALIFICATIONS & EXPERIENCE



**SCOT SIEGEL, PRINCIPAL**  
**SIEGEL PLANNING SERVICES, LLC**

**EDUCATION:**

Oregon State University, BS Geography  
 Portland State University, M. Urban &  
 Regional Planning

**REGISTRATION:**

American Institute of Certified Planners  
 (AICP)  
 LEED Accredited Professional

**TECHNICAL SOCIETIES:**

*AICP Practicing Planner*, Article Reviewer  
 US Green Building Council Member  
 Western Planning Resources Board of  
 Directors, Oregon Representative  
 Oregon Chapter of the American Planning  
 Association, Past Board Member

**WORK HISTORY:**

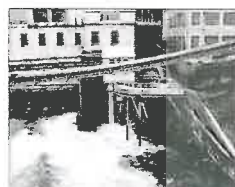
2004-Pres. Principal, Siegel Planning  
 Services, LLC, Portland, OR  
 Prior to 2004 Senior Planner & Project  
 Manager, A/E Firms  
 City Planner in Oregon &  
 Washington  
 Planner for 1000 Friends  
 of Oregon

**PROJECT ROLE:**

Code Writing Consultant

Scot has worked as a planner since 1988. He is an experienced manager specializing in community planning and development projects that require interdisciplinary coordination and public facilitation. Scot is regarded as a national expert in Smart Growth and Land Use Code Applications. For the past 11 years, Scot has served as prime consultant to the Oregon Transportation and Growth Management (TGM) Program. As the state's lead consultant on code assistance projects, he has prepared regulatory audits, model development codes, zoning and subdivision ordinances, design guidelines and standards, and development review for over 50 communities. His work has been cited by the American Planning Association, US Environmental Protection Agency, Oregon Transportation and Growth Management Program, Smart Growth Idaho, and other organizations. Scot has worked as a consultant for communities in Oregon, Idaho, Washington, Alaska, Utah, Arizona, Nevada, and Colorado. He specializes in the following:

- Visioning and Comprehensive Plans
- Zoning and Land Development Codes
- Urban Design and Area Master Plans
- Contract Municipal Planning/Project Management





# PETER MEIJER ARCHITECT, PC

## QUALIFICATIONS & EXPERIENCE

### PROJECT EXPERIENCE

#### PMA: WASHINGTON STATE PARKS RLS

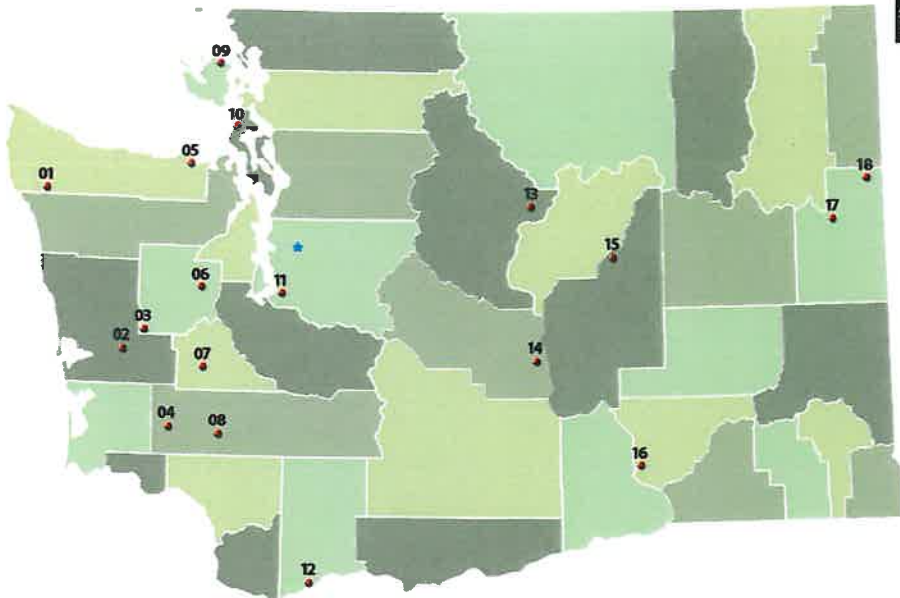
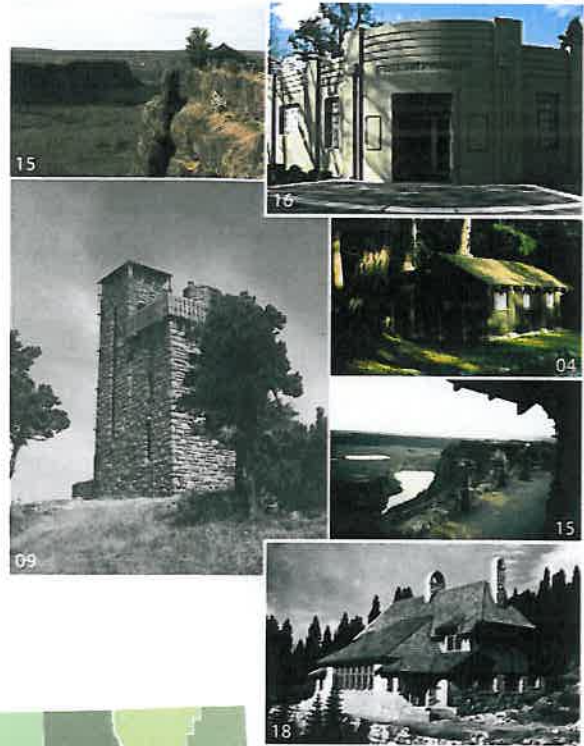
CLIENT: Washington State Parks & Recreation Commission

YEAR: 2001

COST: \$ 120,000

CONTACT: Mr. Gerry Taves  
WSPRC  
T: 360.902.8693

DESCRIPTION: Peter Meijer led and conducted a state wide survey and assessment of over 200 depression era structures for Washington State Parks and Recreation Commission. Tasks included developing a report format, creating context statements and integrity determinations for each structure. The results of the survey were used to develop funding priorities.



- 01 Bogachiel
- 02 Lake Sylvia
- 03 Schafer
- 04 Rainbow Falls
- 05 Sequin Bay
- 06 Twanoh
- 07 Millersylvania
- 08 Lewis & Clark
- 09 Moran
- 10 Deception Pass
- 11 Saltwater
- 12 Beacon Rock
- 13 Lake Chelan
- 14 Ginko
- 15 Dry Falls
- 16 Sacajawea
- 17 Riverside
- 18 Mt. Spokane





**PMA: PIKE PLACE MARKET INVENTORY**

CLIENT: Pike Place Market

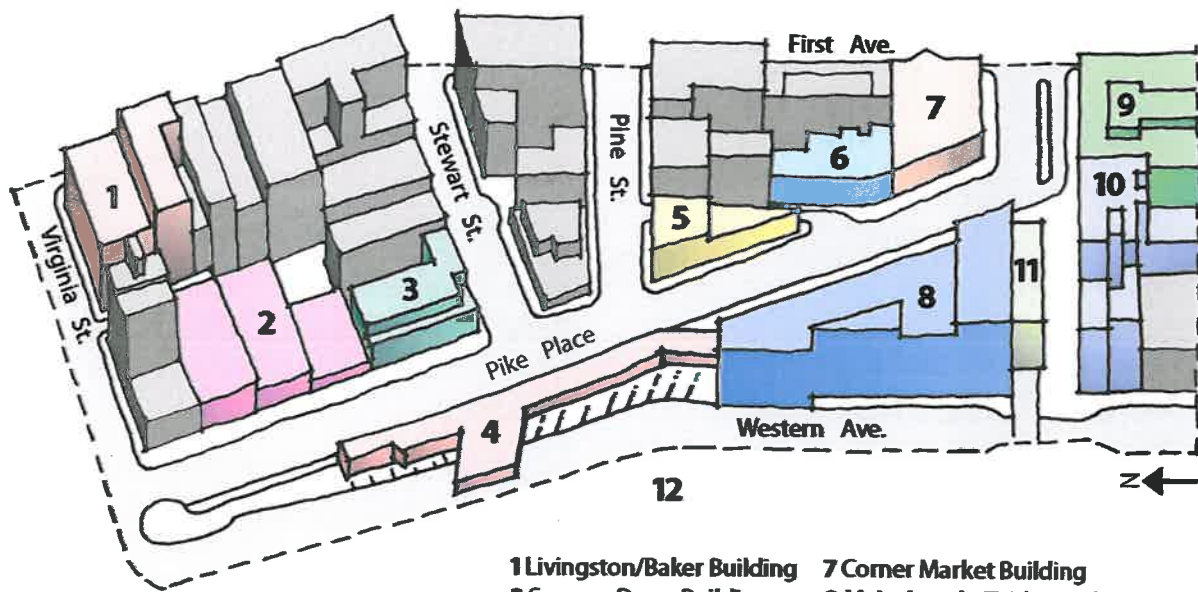
YEAR: 2007

COST: \$ 25,000

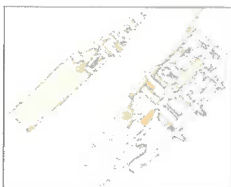
CONTACT: Mr. Terry Plumb  
 T: 206.774.5372



DESCRIPTION: PMA provided an inventory and historic resource assessment of 16 buildings at the Pike Place Market, Seattle, Washington, as a component of a master plan project.



- |                                    |  |
|------------------------------------|--|
| <b>1 Livingston/Baker Building</b> | <b>7 Corner Market Building</b>        |
| <b>2 Soames Dunn Building</b>      | <b>8 Main Arcade/Fairley Building</b>  |
| <b>3 Stewart House</b>             | <b>9 Economy Markey Building</b>       |
| <b>4 North Arcade</b>              | <b>10 LaSalle Building</b>             |
| <b>5 Triangle Market Building</b>  | <b>11 Leland Building</b>              |
| <b>6 Sanitary Market Building</b>  | <b>12 Public Market Parking Garage</b> |





# PETER MEIJER ARCHITECT, PC

## QUALIFICATIONS & EXPERIENCE

### PMA: OSU ILS & HISTORIC PRESERVATION PLAN

CLIENT: Oregon State University

YEAR: 2008/2009

COST: \$ 190,000

CONTACT: Ms. Patty McIntosh  
Oregon State University  
T: 541.737.0917

**DESCRIPTION:** PMA assisted OSU in applying for a Getty Foundation Campus Heritage Grant and acted as project manager for the creation of an OSU campus-wide Historic Preservation Plan including an ILS and National Register OSU Historic District. PMA also developed a walking brochure and campus historic district signage.



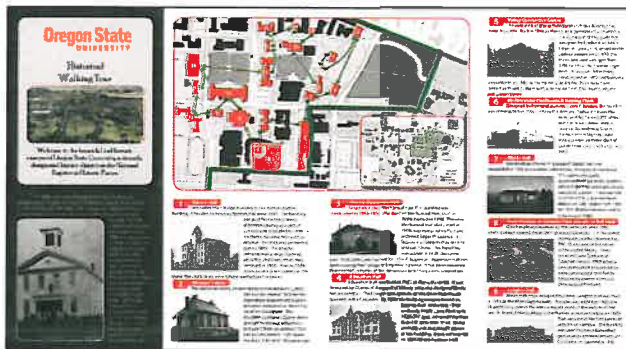
# Oregon State UNIVERSITY

## Historical Walking Tour



Welcome to the beautiful and historic campus of Oregon State University, a recently designated historic district on the National Register of Historic Places.

In 1808, small and struggling Corvallis College was designated as Oregon's land grant institution thanks to the efforts of one of its faculty members. The college was originally located in downtown Corvallis on the block where City Hall currently is located. The first college building was a structure built in 1858 and added onto in 1876. In 1871, the college purchased 34.85 acres west of downtown for the college farm, as specified by the Morrill Act, the federal act which provided for a land-grant institution in each state. The \$4,500 needed for the purchase was raised by 100 local citizens. The lands included the lower campus area and the future site of Benton Hall.



OSU Historical Walking Tour Brochure Front



OSU Historical Walking Tour Brochure Back





**PMA: PORTLAND MIDTOWN HISTORIC PROPERTIES**

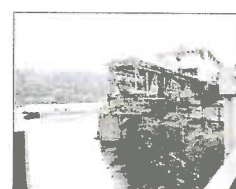
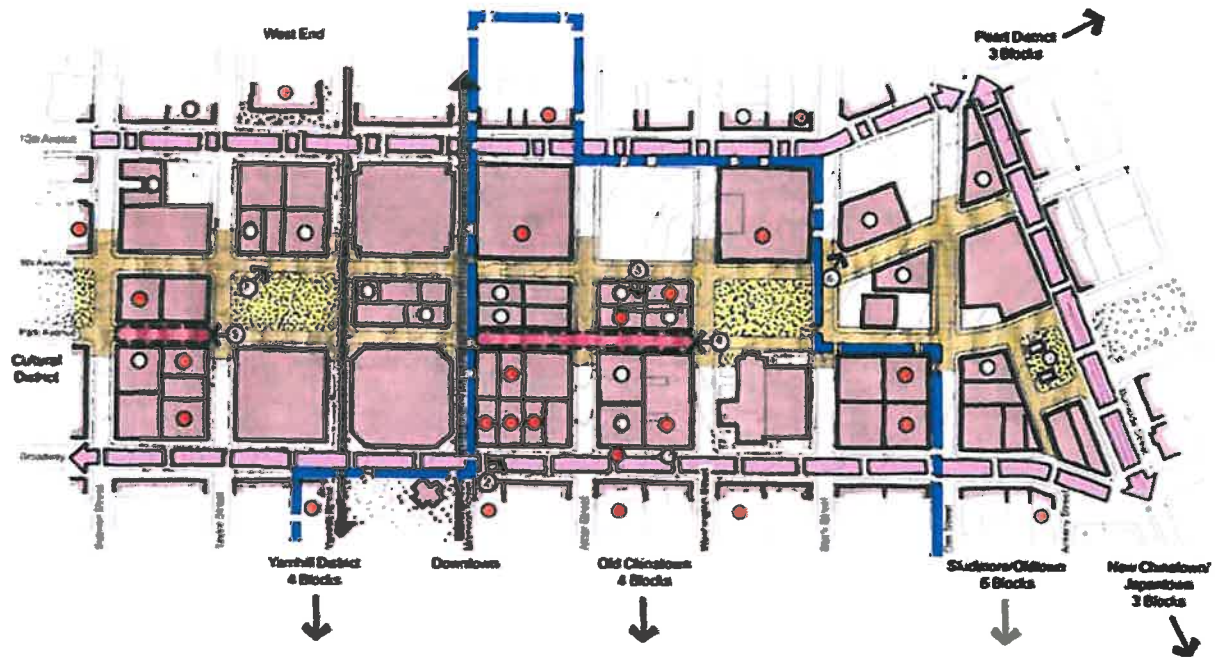
**CLIENT:** Portland Development Commission

**YEAR:** 2001

**COST:** \$ 12,000

**CONTACT:** Mr. Ross Plambeck  
 Portland Development Commission

**DESCRIPTION:** Peter Meijer conducted research and developed a field reconnaissance survey highlighting known historic resources and potential historic resources within the high density CBD between the north and south park blocks in Portland, Oregon.





# PETER MEIJER ARCHITECT, PC

## QUALIFICATIONS & EXPERIENCE



Final Master Plan



Looking towards the Proposed Bridge & Willamette Falls



Physical Site Model with Proposed in Orange

### ACADEMIC: WILLAMETTE FALLS THESIS PROJECT

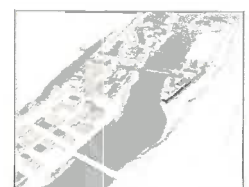
TITLE: Willamette Falls: Planning Responsibly for a Vibrant Future

YEAR: 2008-2009

PROJECT TYPE: 1 Quarter: Research  
2 Quarters: Design Proposal & Execution

CONTACT: Samantha Polinik  
Peter Meijer Architect, PC  
T: 503.517.0283

DESCRIPTION: Guided by research conducted of the Willamette Falls area during the first academic quarter, Samantha Polinik created a master plan design and bridge proposal for her M. Arch thesis at the University of Oregon. Relevant to this RFP, the area included Moore Island, the current site of West Linn Paper Company.





**REFERENCES**

HISTORIC PRESERVATION PLAN  
Oregon State University  
Ms. Patty McIntosh  
Facility Services Manager  
Corvallis, OR 97331  
541.737.0917

PIKE PLACE MARKET, PDA  
Ms. Carol Binder, Executive Director  
85 Pike Street  
Seattle, WA 98104  
206.774.5232

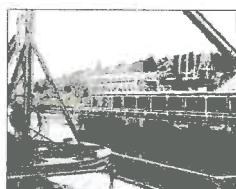
BUREAU OF WATER  
Ms. Brenda K. Nelson, PE, Project Manager  
1120 SW Fifth Ave., Suite 1302  
Portland, Oregon 97204  
503.823.5429

**CURRENT OMWESB CERTIFICATION**

Peter Meijer Architect, PC is a certified Emerging Small Business within the State of Oregon. Women comprise 75% of the work force.

In addition, the Historic Preservation Inventory work for the City of West Linn will utilize the following consultants:

Siegel Planning Services, LLC.  
Lake Oswego, OR  
ESB  
Role: Code Consultant







# PETER MEIJER ARCHITECT, PC

## SCHEDULE & BUDGET

### COST PROPOSAL

Peter Meijer Architect, PC proposes providing services on an time and material basis up to the equivalent of \$ 18,000.00 (Eighteen Thousand and no dollars) worth of hours, plus other direct costs.

Task	Staff Responsible	Title, license and/or certification	Hourly Rate	Est Hours	Total
<b>Required Work</b>					
<b>Project Meeting</b>					
	Peter Meijer	Principal	\$120	4	\$480
	Kristen Minor	PM/Historian	\$70	8	\$560
<b>Research</b>					
	Kristen Minor	PM/Historian	\$70	24	\$1,680
	Samantha Polinik	Intern Architect	\$55	24	\$1,320
<b>Site Survey</b>					
	Kristen Minor	PM/Historian	\$70	96	\$6,720
	Samantha Polinik	Intern Architect	\$55	80	\$4,400
<b>Data Entry</b>					
	Kristen Minor	PM/Historian	\$70	16	\$1,120
	Samantha Polinik	Intern Architect	\$55	24	\$1,320
<b>Conclusions and Recommendations</b>					
	Peter Meijer	Principal	\$120	4	\$480
	Kristen Minor	PM/Historian	\$70	8	\$560
<b>Sub-Total</b>				276	\$17,600
<b>Code Review</b>					
Review (e) Document	Kristen Minor	PM/Historian	\$70	4	\$280
	Scot Siegle	Code Consultant	\$105	8	\$840
Research	Scot Siegle	Code Consultant	\$105	12	\$1,260
1st Draft	Scot Siegle	Code Consultant	\$105	40	\$4,200
Final Draft	Scot Siegle	Code Consultant	\$105	24	\$2,520
Work Session	Scot Siegle	Code Consultant	\$105	4	\$420
Public Hearing	Scot Siegle	Code Consultant	\$105	4	\$420
	Kristen Minor	PM/Historian	\$70	4	\$280
<b>Sub-Total</b>				100	\$10,220
	<b>Reimbursables (List)</b>		<b>Unit of Measure</b>	<b>Unit Price</b>	
	Photography	1	LS	\$1,000	\$1,000
	Per Diem	1	LS	\$100	\$100
	Fuel	1	LS	\$150	\$150
	Reproduction	1	LS	\$150	\$150
<b>Sub-Total</b>					\$1,400
<b>Total Required Services</b>					<b>\$29,220</b>





**TASKS SCHEDULE**

**CONTRACT AWARD:**

December 1, 2009 Estimate

**PROJECT KICK-OFF:**

City of West Linn Dec 15

**RESEARCH:** 3 weeks Jan 11

**SITE SURVEY/ CODE REVIEW:**

Buck Street 2 weeks Jan 25

Other Bolton areas  
2 weeks Feb 8

Sunset Neighborhood  
2 weeks Feb 22

**OWNER REVIEW SITE SURVEY:** 1 week

**REPORT / DATA ENTRY:**

3 weeks Mar 1

**OWNER REVIEW:** 1 week

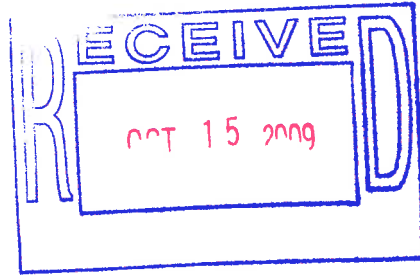
**CONCLUSIONS & RECOMMENDATIONS:**

3 weeks April 1

**OWNER REVIEW:** 1 week

**FINAL SUBMITTAL:** April 10, 2010





October 15, 2009

Mr. Tom Soppe  
Associate Planner  
City of West Linn  
22500 Salamo Road  
West Linn, OR 97068

**RE: Proposal for Historic Preservation Inventory Work & Conservation Overlay Code Development**

Dear Mr. Soppe:

Please find attached a proposal for services that were outlined in your Request for Proposals (RFP) for Historic Preservation Inventory Work for the City of West Linn. We believe that ENTRIX retains the necessary staffing, experience, and capabilities to conduct the architectural survey work and Conservation Overlay Code development described in the RFP. ENTRIX has worked on a number of large inventory projects in the state of Oregon within the past year and also has an established familiarity with how communities in the state choose to preserve their significant historic resources through development codes. Here are some recent projects that are in various stages of completion:

- Irvington Neighborhood Architectural Survey – management of the state’s largest grassroots architectural survey that includes approximately 2700 properties;
- Buckman Neighborhood “Windshield Survey” – conducted a windshield survey of approximately 1400 properties;
- Portland Public Schools, Historic Building Assessment – Intensive Level Survey – 98 properties – completed in 3 ½ months;

ENTRIX is also currently the Historic Preservation Officer for the Sand Point Historic District in Seattle, Washington where staff conducts design reviews of development proposals. Staff members for this project also have experience with drafting historic preservation ordinances, conducting architectural design reviews, and completing land use sections for Environmental Impact Statements. Much of this experience comports with the services requested in your RFP.

If you have any questions concerning this proposal, please contact Kirk Ranzetta at 503-233-3608 or [kranzetta@entrix.com](mailto:kranzetta@entrix.com). Thank you again for considering this proposal.

Sincerely,

A handwritten signature in black ink that reads "Kimberly Demuth".

Kimberly Demuth  
Senior Consultant

# Proposal

## City of West Linn Architectural Survey and Conservation Overlay

October 15, 2009 • Proposal No. P2561001



PREPARED BY

ENTRIX, Inc.  
1111 E. Burnside Street  
Suite 302  
Portland, OR 97214  
1.503.233.3608  
www.entrix.com

PREPARED FOR

City of West Linn  
22500 Salamo Road  
West Linn, OR 97068



---

## TABLE OF CONTENTS

A. Introduction .....	1
B. Statement of Work.....	1
C. Description of Work .....	3
D. Anticipated Tasks, Timeline & Personnel.....	5
E. Project Management.....	5
F. Qualifications .....	6
G. Project Costs .....	9
H. References .....	9

## List of Appendices

Appendix A     Resumes

## A. INTRODUCTION AND WEST LINN'S HISTORIC RESOURCES

Historic buildings are increasingly recognized as a community asset and amenity. They capture the historical legacy of a community, provide a sense of pride, and can attract business and investment. An important initial step for communities to preserve their historic resources is to conduct an inventory, which outlines the historic context and National Register eligibility of buildings and structures. Another important step in conserving historic resources is to develop a conservation overlay that will enable a City to formally recognize and preserve its historic and architectural resources. In response to the Request for Proposal (RFP), ENTRIX is proposing to (1) develop architectural code for the paper mill conservation overlay; and (2) undertake a reconnaissance level survey of the Buck Street area, as well as completing as much reconnaissance work in the older areas of the Bolton neighborhood and Sunset neighborhood as feasible. It is anticipated that 550 properties will be surveyed.

ENTRIX, Inc. has been providing cultural resource management consulting services in the Northwest region since 1984 with established offices in Portland, Vancouver, Olympia, Richland, and Seattle. The cultural resources team at ENTRIX has expertise in conducting architectural surveys, preparing National Register nominations, preservation planning, and developing design guidelines that meet the Secretary of the Interior's Standards for Rehabilitation. Our Portland team, in particular, has experience in heritage area planning. ENTRIX clients include a variety of organizations which include local neighborhood associations, Portland Public Schools, private developers and permit applicants, as well as state and federal agencies.

The two projects contained within this RFP by the City of West Linn fit well within the expertise of the ENTRIX team which consists of historians, architectural historians, and planners. ENTRIX, Inc. has a demonstrated understanding of the historic resources in western Oregon. In addition, the Portland team has been tracking the recent preservation efforts that have occurred in West Linn over the past seven years. Dr. Ranzetta, the former Survey and Registration Coordinator for the Oregon State Historic Preservation Office (SHPO), is familiar with West Linn's preservation efforts. As the Survey and Registration Coordinator, Dr. Ranzetta reviewed and commented upon work products related to the historic contexts prepared for the Willamette Neighborhood and Bolton/Holly Grove areas and also conducted a site visit to the Holly Grove area. West Linn retains an excellent assortment of late-nineteenth to mid-twentieth century housing as well as significant associations with the mills situated along Willamette Falls. All of this recent activity reflects a growing community awareness of heritage and the benefits of becoming a Certified Local Community.

## B. STATEMENT OF WORK

In line with the scope of services, this statement of work is divided into two parts. Part I outlines a work plan for developing land use code for the paper mill area conservation overlay zone. Part II outlines a work plan for a reconnaissance level survey (RLS) of portions of the Buck Street area, older portions of the Bolton neighborhood, and the Sunset neighborhood. The proposed approach is negotiable and ENTRIX is open to changes to the statement of work prior to project implementation.

## **Part I. City of West Linn Code Development**

The principal goal of developing land use code for a conservation overlay is to equip the City of West Linn with the necessary regulatory tools to conserve the historic resources situated within the riverfront industrial area that surrounds the West Linn Paper Mill. The proposed conservation overlay would be consistent with the Secretary of the Interior's Standards for Historic Preservation Planning as it builds upon previous efforts to identify, evaluate, and treat historic resources in the City. The objectives for this portion of the project are related to the development of code, which:

- Outlines boundaries for the overlay zone based upon previous inventory efforts in the Bolton and Sunset neighborhoods, which extend into the riverfront industrial area;
- Presents architecturally-appropriate code that includes standards and guidelines geared to the specific aesthetic and historic circumstances of the industrial area, which encompasses the West Linn paper mill area and the Bolton and Sunset neighborhoods;
- Seeks to preserve and maintain existing historic fabric while accommodating appropriate new design (alterations or new construction) that is attuned to areas historic context and consistent with the Secretary of the Interior's Standards for Rehabilitation; and
- Meets the needs of the community, which will be identified by the West Linn Historic Resource Advisory Board (HRAB) and West Linn planning staff.

## **Part II. Reconnaissance Level Survey (RLS)**

The principal goal of conducting an RLS is to build awareness of historic resources. The proposed RLS work for this project includes the Buck Street area of the Bolton neighborhood, as well as surveying as much of the older areas of the Bolton and Sunset neighborhoods. Reconnaissance level surveys include the following: (1) a historic context that is used to determine the significance of the resources; (2) inventory of existing buildings and structures; (3) determination of resource eligibility to the National Register of Historic Places; (4) identification of concentrations of contributing historic resources to provide boundaries for a possible historic district; and (5) recommendations for future preservation planning efforts.

In order to fulfill the City's goal to survey the Buck Street area of the Bolton neighborhood, as well survey as much of the older areas of the Bolton and Sunset neighborhoods, the following objectives have been indentified:

- Prioritize survey work in the older areas of the Bolton neighborhood and throughout the Sunset neighborhood so that the City can make the best use of Certified Local Government (CLG) funds;
- Use staff time efficiently by drawing resources from previous survey efforts;
- Harness local sources to provide pertinent information on historic resources in the community; and
- Utilize the Oregon State Historic Preservation Office (SHPO) Guidelines for Conducting Historic Resource Surveys in Oregon to ensure a high-quality product that is produced within the time and resources allotted.

## C. DESCRIPTION OF WORK

### **Part I. Compilation of Appropriate Code Language**

The services provided by ENTRIX shall include compiling historically and architecturally appropriate code for an intended paper mill conservation overlay that will be implemented at the City level. This work will be conducted in a manner consistent with the Secretary of the Interior's Standards for Historic Preservation Planning and will result in five principal tasks that include a Kickoff Meeting, Existing Conditions Analysis, the Compilation of Code Language, the Presentation of Draft Code, and the finalized paper mill conservation overlay code.

#### *Task 1. Kickoff Meeting*

At an initial kickoff meeting with the City of West Linn Historic Resources Advisory Board (HRAB), City of West Linn planning staff, and other interested parties, ENTRIX staff will review and refine the proposed statement of work, description of services, and schedule for the project. In addition, the meeting will be used to gather community input on the proposed paper mill conservation overlay and code language. Community input will include the identification of the specific goals for creating a paper mill conservation area, the proposed boundary, and character defining features of the paper mill conservation area. In addition, information will be gathered on the desired content of paper mill conservation overlay code.

#### *Task 2. Existing Conditions Analysis*

Immediately following the kickoff meeting, ENTRIX staff will conduct a field visit of the area surrounding the West Linn Paper Company's mill to collect detailed information concerning historic and aesthetic character of the area (including land use, architectural styles, design and natural features), to confirm the proposed boundaries for the paper mill conservation area, and to document the condition of historic resources. Field notes will result in a brief existing conditions memo, which will highlight key findings. These findings, along with input gathered at the kickoff meeting, will serve as the basis for the code language. The existing conditions memo will be set electronically to planning staff and HRAB for review and comment.

#### *Task 3. Design Standards/Guidelines and Compilation of Code Language*

Using information collected from the existing conditions memo, as well as the comments from HRAB and West Linn planning staff gathered at the Kickoff Meeting, ENTRIX will compile appropriate code language for the paper mill conservation overlay to be implemented through the City's Development Code. The code may include, but is not limited to, the following sections: a statement of purpose, process for implementation, exemptions, permitted uses within the district, boundary description, and design standards for alterations, remodels, and new construction.

#### *Task 4. Present Draft Code*

Draft code will be made available electronically for review by the SHPO (per the West Linn 2009 CLG grant agreement), HRAB, and West Linn planning staff. A formal presentation of the code will be made before HRAB, West Linn planning staff, and other interested parties. The presentation will be used to gather comments and refine the proposed design standards and guidelines for the paper mill conservation overlay.



### *Task 5. Final Code*

The paper mill area conservation overlay code will be finalized upon review by the SHPO, HRAB, and city planning staff. The final draft will be sent out electronically to the HRAB members and members of the City's planning staff for review. If needed, ENTRIX staff can be available to present the code for the paper mill area conservation overlay to the West Linn City Council.

## **Part II. Standard RLS**

The services provided by ENTRIX to complete an RLS for the City of West Linn in the Buck Street area will result in four principal tasks and associated deliverables. These tasks include a Project Kickoff Meeting and Research Design, Fieldwork and Data Entry, Draft Report Comments, and Final Report. ENTRIX anticipates recording 550 properties for this component of the project.

### *Task 1. Project Kickoff & Research Design*

Prior to the commencement of the Standard RLS survey, ENTRIX shall meet with the City of West Linn and SHPO to review project goals and objectives, deadlines, scope and budget, and overall project methodology. This meeting should coincide with the kickoff meeting for paper mill overlay district code development. At the kickoff meeting, timelines for the project will be established and survey work will be prioritized in the Bolton and Sunset neighborhoods. The meeting will also be used to draw from local architectural and historical knowledge.

Consistent with the 2008 SHPO Guidelines for Conducting Historic Resource Surveys in Oregon, ENTRIX shall prepare a research design for conducting a Standard RLS that will include the following information: 1) A USGS map showing the survey boundaries; 2) Project Objective; 3) Boundary Justification; 4) Project Timeline; 5) Personnel and Funding; 6) ENTRIX shall also retrieve and interpret existing information that already exists within the Oregon SHPO Historic Sites Database and data gaps and discrepancies will be identified once that information is forwarded in electronic formats; and 7) ENTRIX will review all previous survey data to check for consistency.

### *Task 2. Fieldwork and Data Entry*

ENTRIX will deploy a team of two fieldworkers to collect all field data. It is assumed that "Letters of Introduction" will be provided to fieldworkers who may encounter interested property owners. The letter would identify ENTRIX employees as contractors working for the City of West Linn, provide information about the survey and the City of West Linn's historic preservation program, and list contacts for additional inquiries.

Field data will be entered onto "walking sheets" and digital photographs will be taken. At least two or more digital images will be taken of each resource that is surveyed. An on-site data review and cleanup will be conducted to ensure all necessary data has been collected and to reduce the number of field trips. All data collected will be transferred to the Oregon Historic Sites Database and submitted to the City of West Linn and SHPO. All data in the database will be reviewed for accuracy and consistency by a Qualified Architectural Historian pursuant to the Secretary of the Interior's Professional Qualification Standards (36 CFR Part 61).

### *Task 3. Draft Report and Comments*

ENTRIX staff will present a draft report to the SHPO, HRAB, and City of West Linn planning staff that shall include: 1) Project Objective and Justification; 2) Boundary Explanation and Justification; 3) Survey Results; 4) Recommendations; 5)

Explanation of Fieldwork Techniques; 6) A brief 3-5 page historic context (single spaced with limited images) that identifies major time periods of development; and 7) Appendices that shall include a cover sheet, printed summary reports, printed data sheets, a marked survey map consistent with SHPO Guidelines, USGS quadrangle, photographs, and bibliography.

*Task 4. Final Report*

ENTRIX staff will address and/or incorporate the comments provided during task 3 into the final draft. Copies of the final report will be submitted to the City of West Linn and/or SHPO.

**D. ANTICIPATED TASKS, TIMELINE & PERSONNEL**

In order to ease discussion of the process, the description of work for the City of West Linn's RFP has been broken into two parts - architectural code development and reconnaissance level survey - with their own associated tasks. Tables 1 and 2 outline the tasks for each part of the project.

**Table 1. Architectural Code Development (Part I) Timeline**

Task Description	Date Begin	Date End	ENTRIX Staff
Task 1: Kickoff meeting with City staff to review scope, statement of work	December 2009	December 2009	Demuth & Ranzetta
Task 2: Existing Conditions Analysis	December 2009	December 2009	Demuth & Ranzetta
Task 3: Draft Design Standards/Guidelines	December 2009	March 2010	Cziesla, Scotten, Ranzetta
Task 4: Present Draft Code	March 2010	March 2010	Ranzetta & Scotten
Task 5: Finalize Code and Presentation	March 2010	August 2010	Ranzetta & Scotten

**Table 2. Reconnaissance Level Survey Timeline**

Task Description	Date Begin	Date End	ENTRIX Staff
Task 1: Kickoff meeting with City Staff	December 2009	December 2009	Demuth & Ranzetaa
Task 2: Fieldwork and Data Collection	January 2009	March 2010	Flathman & Scotten
Task 3: Draft Report and Comments	March 2010	May 2010	Flathman & Ranzetta
Task 4: Final Report and Presentation	June 2010	August 2010	Ranzetta & Scotten

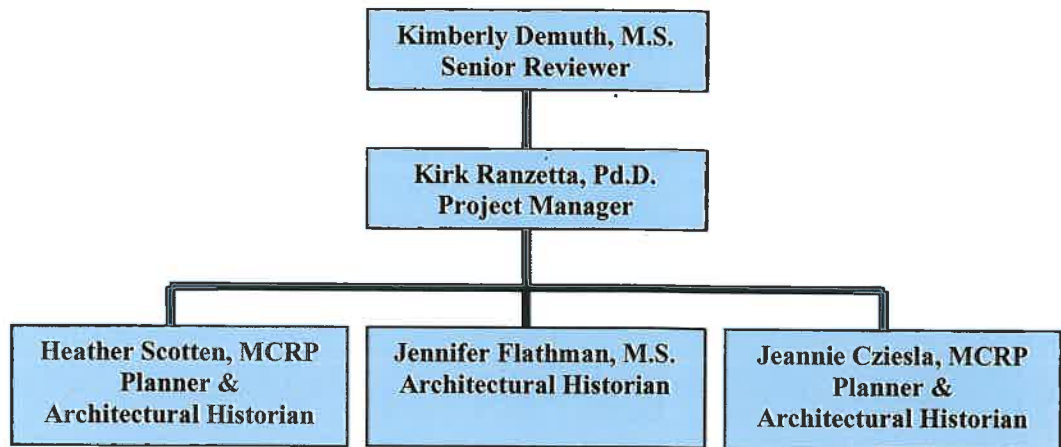
**E. PROJECT MANAGEMENT PLAN**

ENTRIX is adept at developing project management programs that are commensurate with client needs. To manage project costs, ENTRIX utilizes Deltek Vision software to track budgets and staff time on a daily and weekly basis. To ensure quality products, all reports are subjected to three levels of internal editorial review. All architectural survey reports (RLS) will be reviewed by at least two team

members that exceed the Secretary of the Interior’s Professional Qualification Standards in Architectural History and History (36 CFR 61). All fieldwork will be supervised by staff that meets these Standards. In addition, the drafting of code for the conservation overlay will be overseen and reviewed by staff who hold masters degrees in community and regional planning (MCRP) and possess community planning experience.

ENTRIX retains the staff and technology to complete all aspects of this project for its duration. ENTRIX is adept at scheduling personnel to complete tasks on time and under or at budget. ENTRIX uses top of the line, high powered Dell computers to prepare all project reports in an attractive, yet readable format. Our offices retain shared drives that provide data backups each evening and that allow for seamless data storage and transfers between offices. Team members also have a working knowledge of MSACCESS and WORD and will ensure seamless data transfers to the City and SHPO. Our GIS specialists can also prepare maps on demand and we use high quality digital format or SLR cameras depending upon client preference. Staffing will be managed in the following manner:

*FIGURE 1. ENTRIX Team Organization Chart*



As Senior Reviewer for this project Kimberly Demuth will review all project plans and reports. Dr. Ranzetta will serve as the overall project manager and work with City of West Linn planning staff on all project logistics and project-related submittals. Dr. Ranzetta will work with Jennifer Flathman and Heather Scotten to complete all work associated with the RLS component of the Project. Jeannie Czesla and Heather Scotten will complete most work associated with the Code Development phase of the project but will coordinate these activities with Dr. Ranzetta.

**POINT OF CONTACT FOR PROJECT**

Dr. Kirk Ranzetta  
 ENTRIX, Inc. ([kranzetta@entrix.com](mailto:kranzetta@entrix.com))  
 1111 E. Burnside Street, Suite 302  
 Portland, OR 97214  
 503-233-3608

## F. QUALIFICATIONS

Members of the ENTRIX project team have substantial experience working with local governments in historic preservation planning and cultural resource identification projects. Some recent projects include managing the largest architectural survey in Oregon within the Irvington Neighborhood of Portland, assisting the Buckman Neighborhood of Portland with a "windshield survey", completion of a historic building assessment for 98 properties owned by Portland Public Schools, and serving as the Historic Preservation Officer that conducts design review for development proposals within the Sand Point Historic District located in Seattle, Washington.



**House in Irvington (left) and the Skyline School (right) in Portland.**

### *Project Reviewer: Ms. Kimberly Demuth, (28 years experience)*

Ms. Kimberly Demuth, has completed extensive historic resource surveys and National Register historic district nominations for local communities in Oregon and Washington. She managed the cultural resources team of ENTRIX as it completed a large architectural inventory for the NEPA/SEPA Seattle Greenline Environmental Impact Statement (EIS). ENTRIX's responsibilities included inventorying and assessing impacts to 724 resources 50 years of age, including two historic districts of local and national significance. She has also completed National Register Nominations for the Chinatown Historic Districts in Portland, as well as historic district nominations and multiple property submissions for local governments such as Dayton, McMinnville, Astoria, Beaverton, Independence, Salem, and Eugene. Ms. Demuth's planning experience stems from serving as a consultant for the City of La Grande that analyzed local historic preservation issues in the La Grande Central Business Zone (CBZ) that was completed as part of the City's downtown master plan. She also drafted architectural design guidelines for the Port of Siuslaw to establish compatibility between character-defining features of the historic built environment and new development. Lastly, Ms. Demuth has also served as a consultant for the cities of Ashland and Jacksonville, which as a part of larger comprehensive plan updates, identified in-fill strategies for properties within historic districts situated within the two cities.

### *Project Manager/Architectural Historian: Kirk Ranzetta, Ph.D. (14 years experience)*

Dr. Ranzetta retains a Ph.D. and M.A. in Urban Affairs and Public Policy with a specialization in Historic Preservation from the University of Delaware as well as a B.A. in Historic Preservation from Mary Washington University in Virginia. With over fourteen years of experience, Dr. Ranzetta has successfully managed large architectural survey and building survey projects in the Oregon, Washington, California, and Mid-Atlantic regions. In Oregon, he has successfully completed

architectural surveys/building assessments for the "Oaks Addition" in Salem as well as for the Buckman and Irvington Neighborhoods in Portland. Dr. Ranzetta is also currently the Project Manager for the Portland Public Schools Intensive Level Survey, in which he led a team of architectural historians and historians in surveying 98 public school facilities. He also has extensive experience in National Register Nominations as well as historic building fabric identification and assessment. Prior to working at ENTRIX, Dr. Ranzetta served as the Survey and Registration Coordinator for the Oregon SHPO where he worked to implement the currently used SHPO Historic Sites Inventory ACCESS database. Dr. Ranzetta also completed technical reviews of National Register nominations prepared for the State Advisory Committee and has also appeared before the committee to present nominations for approval. Dr. Ranzetta has published articles for local, national and international journals and is currently an adjunct professor at the Historic Preservation Program at the University of Oregon and the Public History Program at the University of Washington, Vancouver. Dr. Ranzetta meets the Secretary of the Interior's Professional Qualification Standards in Architectural History and History.

*Architectural Historian: Heather Scotten, M.S./M.C.R.P (5 Years Experience)*

Ms. Scotten earned an M.S. in Historic Preservation and an M.C.R.P in Community and Regional Planning from the University of Oregon. She has conducted survey work in Oregon, and served as an architectural historian for surveys of the Irvington Neighborhood, Portland Public Schools, as well as surveys for the City of Creswell and Albany. Ms. Scotten also has experience in community and strategic planning. She is familiar with Oregon land use law. She has designed and facilitated public workshops and facilitated vision and goal setting activities. Ms. Scotten has experience collecting and analyzing survey, demographic, economic, and financial data for planning documents. Ms. Scotten's interests are in economic development, particularly related to heritage tourism and recreation, and community revitalization. She is also interested in cultural resource policy and advocacy programs. For her thesis, National Heritage Areas: Planning for and Managing Living Landscapes, she conducted an evaluation of the National Heritage Area program. Ms. Scotten meets the Secretary of the Interior's Professional Qualification Standards in Architectural History.

*Architectural Historian: Jennifer Flathman, M.S. (3 Years Experience)*

Ms. Flathman earned her M.S. in Historic Preservation from the University of Oregon and her B.S. in Political Science and Women's Studies from Vassar College in Poughkeepsie, New York. The former John Yeon Research Fellow and Graduate Research Fellowship recipient at the University of Oregon, Ms. Flathman has specialized in conducting architectural surveys and completing Local Landmark and National Register nominations. She also prepared the National Historic Landmark Nomination for the Aubrey Watzek House in Portland, Oregon. In addition to this work, Ms. Flathman has conducted fieldwork, research and written report sections for the Portland Public Schools ILS, Irvington Neighborhood RLS/ILS, Darigold Building City Landmarks Nomination, South Park Bridge Replacement Project Architectural Survey, Novelty Hill Project Architectural Survey, and the Standard Oil Building Assessment. Ms. Flathman meets the Secretary of the Interior's Professional Qualification Standards in Architectural History.

*Architectural Historian: Jeannie Czesla, M.S./M.C.R.P*

Ms. Jeannie Czesla retains significant planning experience. Having received her M.S. in Historic Preservation as well as her Masters in Community and Regional Planning from the University of Oregon, Ms. Czesla has assisted with revisions to the land use code for the City of Eugene and served as an analyst in the

Comprehensive Plan Update for the City of Shelton, Washington. She has also conducted land use analyses for projects that require compliance with SEPA/NEPA and served as an architectural historian and project manager for several cultural resource studies. She has also assisted clients with complying with design guidelines.

## G. PROJECT COSTS

The following anticipated project costs are inclusive of all costs that will be incurred by ENTRIX for labor, expenses, and travel necessary to complete the project.

Code Development Component:		(\$12,000)
Field visits and public meetings		\$4,700
Draft Code and Research		\$7,300
Reconnaissance Level Survey:		(\$ 16,470)
Fieldwork and Meetings		\$9,400
Report and Data Entry		\$7,070
Total		(\$ 28,470)

## H. REFERENCES

Jen Sohm, Project Manager, Portland Public Schools, 503-916-3778, [jsohm@pps.k12.or.us](mailto:jsohm@pps.k12.or.us), Portland Public Schools, Historic Building Assessment

Christine Yun, principal contact, 503-233-0276 or [pyung@pyung.com](mailto:pyung@pyung.com). Buckman Windshield Survey Project

Mary Piper, Principal Contact, 503-288-9234 or [dsmithpiper@msn.com](mailto:dsmithpiper@msn.com). Reconnaissance Level Survey for Irvington Neighborhood Project

**DISCIPLINE/SPECIALTY**

- Historic Preservation of Architecture
- Cultural Resource Management
- Environmental Studies
- Planning

**EDUCATION**

- MS, Historic Preservation of Architecture, University of Oregon, 1982
- BA, Fine Arts and Design, University of California, 1977

**POST-GRADUATE STUDIES**

- Section 106 Training: A Review for Experienced Practitioners, National Preservation Institute, Seattle, Washington
- NAGPRA Training (Native American Grave Protection Repatriation Act) University of Nevada, Reno, Cultural Resource Management Program
- The Oregon Paradigm: A Living Laboratory for Planning Practice, Portland State University, Urban and Regional Planning Department
- Section 106 Training: Introduction to Federal Projects and Historic Preservation Law, Advisory Council on Historic Preservation and the General Services
- Administration Interagency Training Center, Portland, Oregon
- NEPA Training Course, Tri-Met, Portland, Oregon

**PROFESSIONAL AFFILIATION**

- National Trust for Historic Preservation
- Historic Seattle
- California Preservation Foundation
- WTS, National Membership

**AWARDS**

- McClung/Kress Scholarship, University of Oregon Graduate Program, 1980
- "Women of Distinction in Architecture and Design," Columbia River Girl Scout Council, Portland, Oregon, 1994.

**SUMMARY OF QUALIFICATIONS**

Ms. Demuth is the Technical Director for Cultural Resources Management, with over 29 years of professional experience in the historic preservation of architecture, cultural resource management, project management, and planning. She has extensive experience managing the cultural resources technical studies for oil and gas projects, road and bridge projects, shipyards, light rail transit, commuter rail, heavy rail, monorail, transmission and hydroelectric projects, waterfront revitalization projects, baseball and football stadiums, and urban design projects. She has led consultation with numerous Indian tribes, federal, state, and local historic preservation agencies on projects involving Section 106 of the National Historic Preservation Act and Section 4(f) and 6(f) of the Department of Transportation Act. She has developed Programmatic Agreements (PA) and Memorandum of Agreements (MOA), working closely with the Advisory Council on Historic Preservation. She has been the Cultural Resources Technical Director on numerous SEPA/NEPA projects on a national basis. Ms. Demuth has conducted county and citywide historical and cultural resource surveys and inventories for thousands of resources. She has been extensively involved in the determination of local, state, and National Register eligibility, impacts analysis, and mitigation measures for individual buildings and sites as well as for Multiple Property Submittals and Historic Districts. She has also completed Design Guidelines, Rehabilitation and Maintenance Plans, Treatment Plans, Historic Structure Reports and HABS/HAER reports.

Ms. Demuth's experience also includes managing environmental reports, NEPA and SEPA Environmental Assessments (EAs) and Environmental Impact Statements (EISs) for highway transportation corridors, mining projects, and power plant and transmission corridor projects. She has also been the senior reviewer for land use, recreation, visual, population and housing, public utilities, and transportation reports for EA and EIS projects. Ms. Demuth has held managerial and technical roles on large-scale NEPA/SEPA projects such as: the Keystone and Enbridge Oil Pipeline Projects (Midwest), Seattle Monorail Green Line NEPA/SEPA EIS (Washington), Enloe Dam (Washington), Bridging the Valley (Idaho and Washington), Wallula Power Project and Wallula-McNary Transmission Line Project (Washington and Oregon), Washington State Major League Baseball Stadium, South/North LTR Transit Corridor EIS (Oregon and Washington), and Yosemite National Park projects (California). Ms. Demuth has taught graduate courses in historic preservation of architecture at the University of Oregon, School of Architecture and provided expert witness testimony on historical architectural eligibility and design compatibility issues.

**RELEVANT EXPERIENCE**

**NEPA/SEPA AND SECTION 106 OF NHPA**

***Project Manager - Green Line Seattle Monorail NEPA/SEPA EIS - Seattle, Washington***

Ms. Demuth was the Project Manger/Section 106 Lead/Architectural Historian for the NEPA/SEPA Seattle Monorail Environmental Impact Statement (EIS). The Project study area extends 14 miles from north to south Seattle through downtown, industrial areas, and mixed-use commercial and residential areas. The responsibilities of ENTRIX included inventorying and assessing impacts to 724 resources 50 years of age, including two historic districts of local and

national significance. Early in the Project, ENTRIX coordinated with local and state historic preservation officials to identify the Project Area of Potential Effect and develop procedures for obtaining concurrence regarding determinations of eligibility, impact assessments, and mitigation measures for the large number of resources being studied. In accordance with Section 106 of the National Historic Preservation Act, ENTRIX prepared the final Cultural Resources Technical Report that incorporates archaeological information provided by an archaeological resource firm. ENTRIX prepared a DEIS and FEIS historical resources section to meet NEPA/SEPA requirements and Section 106 Cultural Resources Technical Report. Ms. Demuth also assisted with the development of mitigation measures for historic resources to be included within a Memorandum of Agreement and provided expert witness testimony for the Seattle Monorail Project on the adequacy of the SEPA EIS documentation.

***Project Manager/Architectural Historian - Seattle Monorail Project - Seattle, Washington***

Ms. Demuth was the Project Manager and Architectural Historian for the cultural resource section for the proposed Seattle Monorail Programmatic SEPA EIS. This preliminary environmental study of the Monorail route consisted of intensive background research to identify over 600 previously recorded cultural resources, including archaeological sites, historic buildings, and structures. ENTRIX cultural resources specialists coordinated with state and local historic preservation offices to identify resources and assess impacts to historically significant individual resources and historic districts. Potential impacts and mitigation measures were also identified. Ms. Demuth also conducted an evaluation of a City Landmark Nomination for the existing Monorail System.

***Program Manager – King County Archaeological and Cultural Resources On-Call Contract***

Ms. Demuth is the Program Manager for a King-County Archaeological and Cultural Resources on-call contract. Under this contract with the KCRSD, the ENTRIX team of cultural resource specialists conducted the architectural survey and archaeological investigations for the proposed projects. ENTRIX has received numerous work orders to date, some of which include: Bandaret Bridge, Novelty Hill Bridge, Vashon Island Seawall Emergency Response, South Park Bridge Replacement, and SW 98<sup>th</sup> Street in White Center. Several of these projects utilized funds from Federal Highways Administration (FHWA), therefore the reports were prepared in compliance with Section 106 of the National Historic Preservation Act (NHPA), the National Environmental Policy Act (NEPA), Section 4(f) of the National Transportation Act, as well as the Washington State Environmental Policy Act (SEPA). The ENTRIX team's cultural resource investigation included agency consultation, archaeological resource survey, and project reporting. The reports provide a discussion of applicable Historic Preservation regulations and State/Federal Agency and Tribal Coordination, a description of the Affected Environment, the study Methodology used to complete the report, Archaeological Survey Results, Project Effects, Mitigation Measures, and references cited in the report.

***Cultural Resources Technical Lead - Bay Division Reliability Upgrade Project, San Francisco Public Utilities Commission***

Ms. Demuth was the cultural resources Technical Lead for the Section 106 and CEQA report for the San Francisco Public Utilities Commission. She managed research, fieldwork, consultation, and report preparation for the cultural sections of the EIR report. ENTRIX historians and architectural historians conducted a cultural resources survey for a 21 mile-long APE that spanned the Bay Division segment of the Hetch Hetchy water system. ENTRIX staff completed all necessary sections of a CEQA EIR for the project. The survey identified two NRHP/CRHR eligible historic districts associated with the water system as well as several individually-eligible resources. In addition, ENTRIX prepared the research methods, regulatory background, environmental setting, impacts analysis, and mitigation sections for the CEQA EIR document. ENTRIX also produced a Section 106 Cultural Resources Technical Report which included a historic context statement, methods, survey results, and impacts and mitigation measures sections.

***High Capacity Transit Planner - South/North LRT Corridor Preliminary Planning, Portland, Oregon***

Ms. Demuth served as the High Capacity Transit Planner for Portland Metro during the preliminary planning phase of the 25-mile South/North Light Rail Transit Corridor project. The linear project included the states of Oregon and Washington and involved the coordination of numerous jurisdictions and agencies. Ms. Demuth organized the planning approach for the cultural and historical (Section 106) and parkland (Sections 4f and 6f) elements of the project. She supervised staff, and managed interagency coordination with ODOT, SHPO, and



local jurisdictions and authored sections of the South/North Corridor Alternatives Analysis Technical Reports. Ms. Demuth also was a presenter on Metro's behalf at the South/North Transit Corridor Project Major River Crossings Workshop.

***Project Manager/Architectural Historian - South/North LRT Transit Corridor EIS, Portland, Oregon***

Ms. Demuth was the Task Manager and Architectural Historian for the historic, cultural, and archaeological component of the 25-mile South/North Light Rail Transit Corridor Project. She was responsible for the evaluation of thousands of resources, assessment of impacts, and proposed mitigation measures for project options and alternatives. Ms. Demuth was also involved with coordination of 14 jurisdictions and numerous agencies, including the Washington and Oregon State Historic Preservation Offices. The findings of the study were produced into Technical Results Report, which served as a basis for the Draft EIS.

***Principal-in-Charge/Project Manager - Hillsboro Corridor LRT NEPA Alternatives Analysis/EIS, Portland, Oregon***

Ms. Demuth was the Principal-in-Charge and Task Manager for the historic and cultural resources analysis for the Hillsboro Corridor Extension Light Rail Transit project for Metro in Portland and Washington Counties, Oregon. More than 100 known and potential cultural, archaeological, and historic resources located in Hillsboro corridor were evaluated under section 4(f) of the Department of Transportation Act and Section 106 of the National Historic Preservation Act. A Technical Memorandum was written based on historic, archaeological, and cultural resource impacts. This document contained a compilation of the coordination, data collection, assessment of existing conditions, recommendations, and mitigation options.

**PLANNING/DETERMINATION OF CITY LANDMARK ELIGIBILITY**

***Program Manager - Sand Point Historic District, Seattle, Washington***

Ms. Demuth is providing consultant services to the Seattle Parks and Recreation Department for the Sand Point Historic District. This former military base is currently listed on the NRHP. Ms. Demuth is responsible for coordinating with the agencies involved with the various properties to ensure all activities carried out are compatible with design guidelines set forth in the Historic Preservation Maintenance Plan for the District. As prime consultant, ENTRIX will review all proposed design work and is responsible for the preparation of an annual report that is submitted to the Washington SHPO. ENTRIX also consults with the Washington Office of Archaeology and Historic Preservation regarding concurrence on impacts.

***Project Manager - Ford Motor Company Parts Building Assessment, Seattle, Washington***

Ms. Demuth was the Project Manager for the preparation of a preliminary historical overview regarding the architectural design and historical use of the building and subsequent Seattle Landmarks nomination. Ms. Demuth led the field review of the building photographing and recording its design and specific architectural elements. She coordinated with the client and agency staff regarding the documentation requirements and reviewed the nomination.

***Manager/Architectural Historian - Cornish Historical Properties Assessment, Seattle, Washington***

Ms. Demuth was the Manager and Architectural Historian for a Historical Resource Evaluation of five properties on Harvard Avenue East and Boylston Avenue East in Seattle, in close proximity to the Harvard-Belmont Historic District. Ms. Demuth coordinated with state and local historic preservation specialists to assess the historic significance of the structures. She also made presentations to the City of Seattle Landmarks Board on behalf of the client.

**DESIGN GUIDELINES/MASTER PLANNING**

***Architectural Historian - Steel Bridge Bicycle and Pedestrian Connection, Portland, Oregon***

Ms. Demuth was the Senior Architectural Historian on a project team responsible for the design of a bicycle and pedestrian connection to the Steel Bridge in Portland, Oregon. The bridge was determined eligible for the National Register of Historic Places by the Oregon Department of Transportation. Ms. Demuth's role in the project was to ensure compatibility of the proposed design changes to the Steel Bridge with its existing architectural character through coordination with the City of Portland, Oregon Department of Transportation, and the Oregon Historic Preservation Office.

**CULTURAL RESOURCE SURVEYS AND INVENTORIES*****Consultant - Albina Community Plan, Portland, Oregon***

Ms. Demuth prepared a field manual on Historic Resources Survey and Inventory techniques for the Portland Bureau of Planning as part of the Albina Community Plan. She also conducted a series of workshops for the planning staff and neighborhood representatives. Ms. Demuth also served as a representative on the evaluation committee for the Irvington Neighborhood in association with Bureau of Planning staff.

***Architectural Historian/Project Manager - Washington County Cultural Resource Survey and Inventory, Oregon***

Ms. Demuth was Architectural Historian and Project Manager of the Cultural Resource Survey and Inventory of Washington County, Oregon. The project involved the supervision of field survey staff, organization of methodology and criteria for the evaluation of significant resources, mapping historical research, photographic documentation and summary reports. The project spanned two years and included the evaluation of more than 1,000 cultural resources within the cities and unincorporated area of the county. These resources were evaluated as part of the City's Planning Goal 5 requirements.

***Project Manager/Architectural Historian - Dayton Historic Resource Survey and Inventory, Dayton, Oregon***

Ms. Demuth was the Project Manager and Architectural Historian for the Dayton Historic Resource Survey and Inventory. The project methodology included a literature search, field analysis, evaluation of significant resources, mapping, historical research, photographic documentation, and a summary report. The project was funded in part by a grant from the Oregon State Historic Preservation Office.

***Project Manager/Architectural Historian - City of Gresham Historic Resource Inventory Report, Gresham, Oregon***

Ms. Demuth was the Project Manager and Architectural Historian for the Gresham Historic Resource Inventory, which enabled the City of Gresham to complete its Goals 5 review and compliance. The project involved an intensive survey and inventory hundreds of resources located within the City of Gresham. She conducted a literature search, field work, architectural analysis, and historic research for all resources 50 years of age or older. The resources were then evaluated for significance and recommended future planning goals were established for the protection of resources identified in the study. These recommendations, in addition to survey data, photography, and site plans for individual resources were included in a final report. Ms. Demuth worked closely with the Gresham City Planning Staff and the Oregon State Historic Preservation Office, and numerous volunteers from the City of Gresham.

***Architectural Historian - Historic Resources Inventory in Springfield, Oregon***

Ms. Demuth was an Architectural Historian for this Historic Resource Survey and Inventory to document the city of Springfield's historic resources and to create a tool for future land use decisions. The inventory provided the City of Springfield with a database for potential individual National Register nominations, a Historic District nomination or Multiple Property Submittal. Ms. Demuth was responsible for the identification and documentation of resources.

***Project Manager/Architectural Historian - Adair's Astoria Historic Resource Inventory, Astoria, Oregon***

Ms. Demuth was a Project Manager and Architectural Historian for this Historic Resource Survey and Inventory to document this neighborhood's historic resources and to create a tool for future land use decisions. The inventory provided the City of Astoria with a data base for potential individuals National Register nominations, a Historic District Nomination, and/or a Multiple Resource Nomination. Ms. Demuth conducted this work as a consultant to the City of Astoria and the Oregon State Historic Preservation Office. The inventory was divided into three major phases: the survey process, inventory process, and the evaluation of resources utilizing criteria developed by the National Park Service.

**INVESTMENT TAX CREDIT/CERTIFIED REHABILITATION*****Project Architectural Historian - The Johnson Residence, Salem, Oregon***

Ms. Demuth, as the Project Architectural Historian, provided design assistance for the schematic and final design for this property with terraced slopes and side yard improvements. These improvements included basalt-faced retaining walls surrounded by a rich palette of herbaceous and woody plants, shrubs, and trees. A woodland garden of rhododendrons, azaleas, camellias, and heathers provide focal interest throughout the season. The highlight of the project is a new deck constructed from recycled redwood coming from dismantled wine vats in

Northern California. New concrete and stone steps have also been constructed to provide access through the side yard.

***Project Architectural Historian/Project Manager - Clyde Hotel National Register Nomination and Tax Credit Rehabilitation, Portland, Oregon***

Ms. Demuth, as the Project Architectural Historian and Project Manager, completed the National Register Nomination for the four story Clyde Hotel, located in Portland, Oregon. This project included an architectural analysis and field investigation of the building in addition to primary and secondary research. The project was presented to and approved by the State Advisory Committee on Historic Preservation and forwarded to the National Park Service who approved it in 1994. Ms. Demuth completed the analysis of existing conditions for the "Certified Rehabilitation." The second phase of the project involved a major rehabilitation of the building. The Secretary of Interior "Standards and Guidelines for Rehabilitation" was followed throughout the duration of the project. Special consideration for architectural character defining features of the building were reviewed in light of current compliance with seismic upgrade and ADA code requirements.

**HISTORIC STRUCTURES REPORTS/TREATMENT PLANS**

***Project Manager/Architectural Historian - Deepwood Mansion Historic Structures Report, Salem, Oregon***

Ms. Demuth was the Project Manager and Architectural Historian for the historical and architectural documentation of the existing conditions of the interior and exterior of this historic building and a comprehensive historic paint analysis. Placed on the National Register of Historic Places in 1973, there had been numerous alterations to the interior of the building since its construction in 1893. In addition to documenting the alterations, a preservation plan was completed which included future maintenance guidelines.

***Project Manager/Architectural Historian - Pittock Mansion Historic Paint Analysis Report, Portland, Oregon***

Ms. Demuth was Project Manager/Architectural Historian Consultant for this paint analysis project. The Pittock Mansion is listed on the National Register of Historic Places and is one of the most significant buildings in Portland. The project involved conducting a comprehensive historic paint analysis of the entire mansion. Samples were taken and examined. A final report was developed showing the evolution of paint colors over time in the mansion.

**NATIONAL REGISTER NOMINATIONS**

***Project Manager/Architectural Historian - McMinnville Downtown Historic District, McMinnville, Oregon***

Ms. Demuth was the Project Manager and Architectural Historian for the McMinnville Downtown Historic District National Register Nomination. The district is comprised of approximately ten city blocks of the commercial core of McMinnville. The district contains a highly intact collection of commercial buildings dating primarily from 1890- 1920. Ms. Demuth was involved in the compilation of the document including identification of the boundaries. She was also involved in the coordination of the project and meetings with the McMinnville Historic Landmarks Committee, Planning Department, and the McMinnville City Council.

***Architectural Historian - Ellis Lawrence Multiple Property Submittal, Oregon***

Ms. Demuth was the Architectural Historian for the Ellis Lawrence Multiple Property Submittal. This project involved the nomination of 22 properties designed by the noted Oregon architect Ellis Fuller Lawrence. The property types included residences, a tennis club, and one church. Ellis Lawrence was founder and first dean of the School of Architecture and Allied Arts at the University of Oregon in Eugene, Oregon. He resided in Portland, traveling to Eugene two days a week on the Red Electric train. The architectural firm of Lawrence and Holford was responsible for designing over 200 buildings in Oregon and southeastern Washington. The Multiple Property Submittal was a culmination of an extensive survey undertaken in an earlier phase of the project. Ms. Demuth was responsible for documentation of all 22 properties, compilation of the nomination and coordination with the private property owners and the Oregon State Historic Preservation Office.

***Principal-in-charge/Architectural Historian - West University Neighborhood Multiple Property Submittal, Eugene, Oregon***

Ms. Demuth was Principal-in-Charge and Architectural Historian for the West University Neighborhood Multiple Property Submittal. This project included the development of a context statement for a Multiple Property Submittal and two property nominations. The West University Neighborhood is one of the oldest neighborhoods

in Eugene. It is comprised of commercial, residential and university buildings. Ms. Demuth was responsible for presenting findings to the Eugene Historic Landmarks Committee and the Eugene Planning Department.

***Deputy Project Manager/Architectural Historian - Chinatown Historic District, Portland, Oregon***

Ms. Demuth was Deputy Project Manager and Architectural Historian for a National Register Historic District Nomination for Portland, Oregon's Chinatown, as part of the Portland Development Commission's goals to revitalize the area. The project entailed numerous public meetings and presentations to property owners and interested citizens, historical research, interviews, architectural evaluation, and preparation of the nomination document which was presented to the staff of the Oregon State Historic Preservation Office and the State Advisory Committee on Historic Preservation. The National Park Service approved the nomination.

***Project Manager/Architectural Historian - Dayton Multiple Property National Register Nomination, Dayton, Oregon***

Ms. Demuth was Project Manager and Architectural Historian for the Dayton Multiple Property National Register Nomination. The project entailed an evaluation of resources for National Register Eligibility as a result of the inventory project. Each significant resource was evaluated according to National Park Service criteria, recorded in the field, and photographed. The National Register Nomination was presented to the Oregon State Historic Preservation Advisory Committee which was forwarded to and approved by the National Park Service.

***Principal-in-Charge/Architectural Historian - Uniontown-Alameda Historic District National Register Nomination, Astoria, Oregon***

Ms. Demuth was Principal-in-Charge and Architectural Historian for this National Register nomination of an irregular-shaped area situated on the steep northwest slope of the City of Astoria. The district covers roughly 30 blocks and is located at the mouth of the Columbia River and the Pacific Ocean in the northern portion of Clatsop County. The historic district is nationally significant as the largest historic Finnish community in the western United States. It is locally significant as the largest remaining and most viable Finnish community in Oregon. The district, still inhabited by many earlier inhabitants and their descendants, is also significant for its distinctive Finnish and working class architectural character.

***Project Manager/Architectural Historian - Beaverton Downtown Historic District, Beaverton, Oregon***

This project area includes a portion of the City of Beaverton's historic commercial area. Ms. Demuth, as Project Manager and Architectural Historian, worked closely with the City of Beaverton's business community and the city staff to formulate the boundaries of this district and complete the National Register nomination. Numerous public meeting with property owners were held, in addition to presentations to the City Council.

***Principal-in-Charge/Architectural Historian - City of Independence Historic District, Independence, Oregon***

Ms. Demuth was Principal-in-Charge and Architectural Historian for the Independence, Oregon, Historic District nomination project. The District is composed of four plats that cover a 35-block area, including both residential and commercial properties. One historic site, Pioneer, Park, also is included in nomination. The project was presented to the Oregon State Advisory Committee on Historic Preservation and approved by the National Park Service.

***Principal-in-Charge/Project Manager/Architectural Historian - King's Hill Historic District National Register Nomination, Portland, Oregon***

Ms. Demuth was Principal-in-Charge, Project Manager and Architectural Historian for the King's Hill Historic District National Register Nomination project. The district is an irregularly shaped 43 acres of mixed residential and commercial use, located in southwest Portland, Oregon. The King's Hill Historic District is eligible for inclusion on the National Register of Historic Places due to its historical association with significant people who resided in and developed the area. The district also is eligible as one of the largest and finest extant examples of architect-designed high style residences and apartment buildings within the state of Oregon. The district provides a continuum of architectural styles; a visual link with Portland's past, enhanced by the magnificent trees which line the streets, and many original brick and stone retaining walls. The project entailed an extensive research effort and evaluation of architectural character, numerous public meetings, and presentations before the City of Portland Landmarks Commission, Portland City Council, and Oregon State Advisory Committee on Historic Preservation.

**INDIVIDUAL REGISTER NOMINATIONS**

- Cumberland Apartments, Portland, Oregon

- Clyde Hotel, Portland, Oregon
- Elm Street Apartments, Portland, Oregon
- Giesy-Failing House, Portland, Oregon
- Gilliland, Lewis House, Portland, Oregon
- Greenwood House, Portland, Oregon
- Hines, Pierre and Charlotte House, Portland, Oregon
- Jones, Dr. Noble House, Portland, Oregon
- Marshall-Wells Company Warehouse, Portland, Oregon
- Miller, Henry House, Portland, Oregon
- Prager-Lombard House, Portland, Oregon
- Pipes, Martin Luther House, Portland, Oregon
- Price, O.L. House, Portland, Oregon
- Trinity Place Apartments, Portland, Oregon
- Wells Guthrie House, Portland, Oregon
- Whidden-Kerr House, Portland, Oregon
- Zimmerman-Rudeen House, Portland, Oregon

#### **EMPLOYMENT HISTORY**

- ENTRIX, Inc., Senior Consultant/Architectural Historian, 2000 to date
- URS/ Dames & Moore, Senior Planner/Architectural Historian, 1998 to 2000
- Kimberly Demuth Historic Preservation Consultants, Inc., Principal, 1997 to 1998
- Shapiro & Associates, Senior Planner/Architectural Historian, 1995 to 1997
- Demuth Glick Consultants Ltd, Principal, 1990 to 1995
- Demuth & Associates, Principal, 1979 to 1990
- Washington County Planning Department, Hillsboro, Oregon, Project Planner/Architectural Historian, 1982 to 1984
- City of Eugene, Eugene Oregon, Associate Planner and Architectural Historian, 1979 to 1982

#### **TEACHING POSITIONS**

- Adjunct Professor, University of Oregon, School of Architecture, Historic Preservation of Architecture Graduate Program
- Lecturer, Marylhurst College, Portland, Oregon. Architecture and Interior Design Program

#### **PUBLICATIONS**

- Cultural Resources and You: A Volunteer Guide to Local Cultural Resource Surveys and Inventories, Ed. By the Oregon Preservation Resource Center, June 1983.
- Rehab Oregon Right, Ed. By Oregon Preservation Resource Center, Portland, Oregon, December 1986.

**TECHNICAL REPORTS/STUDIES/NOMINATIONS****ENTRIX PROJECT REPORTS**

- 2008 *Keystone Oil Pipeline Project Environmental Impact Statement*: Prepared for the United States Department of State, ENTRIX, Seattle.
- 2008 *Cultural Resources Section 106 Technical Report for the Novelty Hill Road Project – Phase 2*: Prepared for the King County Road Services Division, ENTRIX, Seattle.
- 2008 *Cultural Resources Section 106 Technical Report for the Novelty Hill Road Project – Phase 1*: Prepared for the King County Road Services Division, ENTRIX, Seattle.
- 2008 *Cultural Resources Section 106 Technical Report for the South Park Bridge Project*: Prepared for the King County Road Services Division, ENTRIX, Seattle.
- 2008 *Cultural Resources Section 106 Technical Report for the Woodinville-Duvall Road at 212<sup>th</sup> Avenue NE Intersection Improvement Project*: Prepared for the King County Road Services Division, ENTRIX, Seattle.
- 2007 *Cultural Resources Section 106 Technical Report for Bandaret Bridge Replacement and Associated Road Improvements*: Prepared for the King County Road Services Division, ENTRIX, Seattle.
- 2006 *Cultural Resources Section 106 Technical Report for the Vashon Island Seawall Repair Project*: Prepared for the King County Road Services Division, ENTRIX, Seattle.
- 2004 *Green Line Environmental Impact Statement*: Prepared for the Seattle Monorail Project, ENTRIX, Seattle.
- 2002 *Seattle Monorail Popular Transit Plan Draft Environmental Impact Statement Historic Resource Section*, Prepared for the Elevated Transportation Company, ENTRIX, Seattle.
- 2002 *Final Preservation Maintenance Plan for the United Engineering Company Shipyard (Todd Shipyard) Historic District*, prepared for the U.S. Army Corps of Engineers, and Port of Oakland and City of Alameda, ENTRIX, Seattle.
- 2001 *Historic Resource Analysis for the Atlantic/Central Bus Base expansion Environmental Impact Statement*, prepared for King County Department of Transportation, ENTRIX, Seattle.
- 2001 *Highway 62 Corridor Solutions Project North Medford Interchange Historic, Cultural, and Archaeological Resources Report*. Prepared for Oregon Department of Transportation, ENTRIX, Seattle.
- *Historical Resources Evaluation: Webster Brinkley Site*. Prepared for the Samis Foundation, ENTRIX, Seattle.
- 2002 *Historic Resource Study for the Renton Downtown Core*. Prepared for the City of Renton, ENTRIX, Seattle.
- 2002 *Cornish Properties Historical Resource Evaluation*, prepared for Cornish College of the Arts, ENTRIX, Seattle.
- 2001 *Cultural Resources Technical Report for the Newport Northwest Transmission Line Project, Wallula, Washington to McNary, Oregon*. Prepared for Newport Northwest, LLC, ENTRIX, Seattle.
- 2001 *Historical and Archaeological Assessment for the Rock Creek Hydroelectric Project, Baker County, Oregon*. Prepared for Oregon Trail Electric Consumers Cooperative, Inc. ENTRIX, Seattle.

Demuth, Kimberly (Senior Reviewer)

- 2004 *Ford Motor Company Parts Building Seattle Landmarks Nomination*, Prepared for Costco, Inc., ENTRIX, Seattle.
- 2003 *Green Line EIS Areaways Study Within the Downtown Segment*. Prepared for the Seattle Monorail Authority, ENTRIX, Seattle.

- 2003 *Rock Creek Hydroelectric Project HAER Study*, Prepared for Oregon Trail Electric Consumer Cooperative, Inc., ENTRIX, Seattle.

**SELECTED PREVIOUS STUDIES**

Demuth, Kimberly (Principal Author)

- 2000 *Washington County Wilsonville to Beaverton Commuter Rail Project Environmental Assessment Historic Resource Report*. Prepared for the Oregon Department of Transportation by Dames and Moore, Seattle.
- 2000 *Historic Report for the Cedar Falls Masonry Dam Intake Rehabilitation Project*. Prepared for Seattle City Light, Demuth Historic Preservation Consultants, Seattle.
- *Draft Environmental Impact Statement for North Bend Gravel*
- *Operation*, Prepared for King County Department of Development and Environmental Services, Dames & Moore/URS, Seattle.
- 1999 *Financial Feasibility Study for Old Georgetown City Hall*. Prepared for Georgetown Crime Prevention & Community Council, The Perimedes Group, LLC, Seattle.
- *Everett-to-Seattle Commuter Rail EIS, Section 106 Technical Report*. Prepared for Huckell/Weinman Associates and Sound Transit, Seattle.
- 1999 Bethel Temple (Chrystal Pool) Landmarks Nomination, Prepared for Murry Franklin, Dames & Moore, Seattle.
- 1998 Historic Resources Section for the *SR16/Union Avenue Vicinity SR302 Vicinity*. Prepared for FHA and Washington Department of Transportation, Shapiro and Associates, Inc., Seattle.
- 1998 *Historic, Archaeological and Cultural Resources Impacts (Section 106) Results Report: South/North Transit Corridor Study*. Prepared for Portland Metro, Shapiro and Associates, Inc., Seattle.
- 1997 *Portland Open Water Reservoir Historical Analysis Technical Memo*. Prepared for Montgomery Watson, Shapiro and Associates, Inc., Portland.
- 1997 *Historic, Archaeological, and Cultural Resources Section 106 Report: Steel Bridge Pedestrian and Bicycle Crossing Project, Portland, Multnomah County, OR*. Prepared for HNTB and City of Portland, Shapiro and Associates, Inc., Seattle.
- 1996 *Historic Resources Technical Document for Washington State Major League Baseball Stadium Project*. Prepared for Washington State Major League Baseball Stadium Public Facilities District, Shapiro and Associates, Inc., Seattle.
- 1995 *Clyde Hotel Investment Tax Credit Project*. Prepared for Adam Patel, Demuth Glick Consultants Ltd., Portland.
- 1996 Cultural Resource Section for the *Final Environmental Impact Statement for Proposed Master Plan Update Development Actions at Seattle-Tacoma International Airport*. Shapiro and Associates, Inc., Seattle.
- 1995 *La Grande Central Business Zone Draft Master Plan*. Prepared for the City of La Grand, Demuth Glick Consultants, Ltd., Portland.
- 1995 *City of Jacksonville Comprehensive Plan Draft Historic Element*. Prepared for City of Jacksonville, Oregon, Demuth Glick Consultants, Ltd., Portland.
- 1994 *Peninsula Urban Design Plan Process Summary*. Prepared for the City of Newport, Demuth Glick Consultants, Ltd., Portland.
- 1994 *City of Jacksonville Comprehensive Plan: Draft Historic Element*. Prepared for the City of Jacksonville, OR, Demuth Glick Consultants, Ltd., Portland.

- 1993 *Cultural Resources Technical Report: Mill Plain Extension Vancouver, Washington*. Prepared for City of Vancouver, CH2M Hill and Demuth Glick Consultants, Ltd., Portland.
- 1992 *Final Cultural Resources Technical Report: Pioneer Mountain-Eddyville Section Corvallis-Newport Highway Lincoln County, Oregon*. Prepared by CH2M Hill and Demuth Glick Consultants, Ltd., Portland.
- 1992 *Cultural Resource Inventory for the Hillsboro Comprehensive Plan Economic, Social, Environmental and Energy Analysis*. Prepared for the Hillsboro Planning Department, Cogan Sharpe Cogan and Demuth Glick Consultants Ltd., Portland.
- 1987 *McMinville Downtown Historic District Design Guidelines*, Prepared for the City of McMinville, Northwest Heritage Property Associates, Portland.
- *Gresham Historic Resource Inventory Report*, Prepared for the City of Gresham, Northwest Heritage Property Associates, Portland.
- 1985 *Dayton Historic Resources Survey and Inventory*, Prepared for the City of Dayton, Demuth & Associates, Portland.

### **PRESENTATIONS AND SEMINARS**

- Standard Operating Procedures Presentation, Yosemite National Park Service, El Portal, California.
- Historic Preservation League of Oregon and Boscow Milligan Foundation. Public presentation on Architectural Styles, Rejuvenation, Inc., Portland, Oregon.
- Community Plan Workshops on Survey and Inventory Process sponsored by the City of Portland, Bureau of Planning, Portland, Oregon.
- Oregon City, Historic Preservation, Workshops, sponsored by the Oregon City Planning Dept., Oregon City, Oregon.
- Manageable Make-overs, Workshop, speaker on Tax Incentive's and Financial Alternatives, sponsored by Roseburg Town Center and U.C.C.'s Small Business Development Center, Roseburg, Oregon.
- Historic Preservation League of Oregon, Speaker on Historic Interiors, Pittock Mansion, Portland, Oregon.
- Rehab Oregon Right Workshops Speaker sponsored by the Historic Preservation League of Oregon, Statewide.
- Oregon Planning Institute, Speaker, sponsored by the Bureau of Governmental Research and Service, University of Oregon, Eugene, Oregon,

### **EXPERT WITNESS**

- Pacific Medical Building Expansion Project, Architectural Design Compatibility, Seattle, Washington
- Green Line Seattle Monorail NEPA/SEPA EIS Seattle, Washington



**DISCIPLINE/SPECIALTY**

- Historic Preservation
- Planning
- Public Policy

**EDUCATION**

- Ph.D., Urban Affairs and Public Policy, University of Delaware, Newark, 2006
- Master of Arts, Urban Affairs and Public Policy, University of Delaware, Newark, 1996
- Bachelor of Arts, Historic Preservation, Mary Washington University, VA, 1994

**CONTINUING EDUCATION AND CERTIFICATIONS**

- University of Florida, Preservation Institute: Nantucket, MA, 1994

**AWARDS**

- Winner of the Sussman Prize for Best Dissertation in Public Policy in the College of Human Services, Education and Public Policy, University of Delaware, 2007.
- Awarded Full Tuition Scholarships and Graduate Stipends at the University of Delaware, 1995, 2001, 2002
- Recognized for distinguished service by the St. Mary's County Historic Preservation Commission, 2002.
- *Grace Wadsworth Award* for professional promise in historic preservation, Mary Washington Univ., 1994.
- *J. Binford Walford Scholarship* for the study of architecture, Mary Washington University, 1993-1994.
- *Departmental Honors* awarded for the successful completion and defense of senior thesis, May 1994.

**PROFESSIONAL AFFILIATIONS**

- Vernacular Architecture Forum

**SAFETY/CERTIFICATIONS**

- American Red Cross CPR Certification, current

**SUMMARY OF QUALIFICATIONS**

Dr. Ranzetta has over fourteen years of private, public, and non-profit sector work experience in cultural resource management, historic preservation, and environmental permitting. He has extensive experience in the Pacific Northwest, Midwest, and Mid-Atlantic regions managing, technically reviewing, and completing cultural resource surveys for compliance with Section 106 of the NHPA and NEPA (EA/EIS). Public transportation and energy/water infrastructure projects as well as historic structure studies have been integral to Dr. Ranzetta's practice. He has also served as a technical editor, drafted text, and conducted fieldwork for cultural resource reports and other NHPA and NEPA related-documents. Interagency consultation under section 106 of the NHPA is also a specialty.

Prior to working at ENTRIX, Dr. Ranzetta served as the Review and Compliance Coordinator for the Oregon SHPO where he consulted with federal agencies on hundreds of projects, evaluated cultural resource reports for technical sufficiency, assisted agencies in the negotiation and preparation of MOAs, and worked to streamline project reviews. This experience included working closely with cultural resources staff from the Oregon DOT, Oregon Energy Siting Council, USFS, FERC, BPA, USFWS, BIA and BLM in Oregon. These reviews were conducted in compliance with Section 106 of the NHPA, Section 4(f), NEPA, HABS/HAER requirements, ORS 358.653, and OAR Chapter 345. He also served as the Survey and Registration Coordinator for the state, working to streamline survey methodologies for community or compliance-oriented architectural survey projects and provided technical reviews of National Register nominations in preparation for the State Advisory Committee on Historic Preservation.

Dr. Ranzetta has published articles for local, national and international journals and presented academic papers on a variety of cultural resource topics. He was named the winner of the Sussman Prize for Best Dissertation in Public Policy in the College of Human Services, Education and Public Policy at the University of Delaware in 2007. He is also an Adjunct Assistant Professor at the University of Oregon and University of Washington, Vancouver where he teaches Cultural Resource Management and Recording Historic Buildings.

**RELEVANT EXPERIENCE****HISTORIC STRUCTURE/BUILDING RECORDATION PROJECTS*****Project Manager, Architectural Historian – Portland Public Schools Historic Building Assessment, Portland, Oregon 2009.***

ENTRIX was retained by Portland Public Schools (PPS) to conduct a historic building assessment of the school district's 98 properties. The assessment included identifying and evaluating the significance of the district's historic school buildings, providing management and conservation recommendations, and presenting the findings to a number of public boards and commissions. The project resulted in the compilation of a 890 +/- page document that was completed within 3 ½ months.

***Architectural Historian — Finney House Building Evaluation Project, University of Oregon and Montana Heritage Commission, Virginia City, Montana, 2008.***

As part of an interdisciplinary team from the University of Oregon's Historic Preservation Department, Dr. Ranzetta assisted in the recording and structural

evaluation of the c. 1864 Finney House, one of the last remaining horizontal log buildings in Nevada City, Montana (a former mining town), to exist at its original location. Retained by the Montana Heritage Commission, Dr. Ranzetta conducted architectural investigations of the interior and exterior historic fabric, digitally photographed the building, completed measured drawings, and assisted in the preparation of a final report for MHC review. The significant findings of the report may alter how the building is currently interpreted to the public.

**Project Principal/Sole Proprietor — Phase III – Phase VIII of the St. Mary's County, Maryland Survey Project, 1996-2002. Client: Maryland Historical Trust & St. Mary's County Government.**

Integrated historic preservation into the overall land use planning process. Authored the county's first historic preservation plan, facilitated public meetings related to the plan, and organized a working group to establish priorities and strategies for the overall document. Reviewed land use proposals for impacts upon historic resources and scenic corridors, provided design and site recommendations for new construction on individual historic buildings. Documented several hundred historic sites that were included in the Maryland Inventory of Historic Places, photographed several hundred historic sites according to MHT standards that included 5 x 7 black-and-white processing on fiber-based paper and labeling, authored over twelve National Register Nominations, and authored a National Historic Landmark nomination for Sotterley Plantation.

**Project Principal — Historic Structure Analysis of Clocker's Fancy. Client: Historic St. Mary's City, 2000.**

Teaming with John O'Rourke and Gus Kiorpes, conducted a site investigation of Clocker's Fancy, an early nineteenth century dwelling situated near Historic St. Mary's City. Conducted documentary research, a site investigation and historic fabric analysis and identification, prepared a site plan and annotated measured drawing for the house. Submitted final report to client on schedule.

**Project Principal/Sole Proprietor/Advisor — Sotterley Plantation Rehabilitation Project, Hollywood, Maryland. Client: Sotterley Foundation, 1998.**

Prepared Annotated bibliography, assembled historical research, compiled yearly maintenance documentation, and organized/archivally stabilized historic photographs collection in preparation for a multi-million dollar rehabilitation of Sotterley Plantation and one of the National Trust's 11 Most Threatened Historic Buildings in America in 1997. Also served on the Foundation's Restoration Committee and provided advice concerning the building's history and the integrity of historic fabric. Also authored the National Historic Landmark nomination for the property.

#### PRIVATE SECTOR/DEVELOPMENT

**Project Manager — Proposed Remedial Actions at the Owens-Brockway Glass Container, Inc. Site, Portland, OR, 2009**

Managed the preparation of a Cultural Resources Section 106 Technical Report to satisfy the conditions of an Army Corps of Engineers Nationwide Permit 38 condition to comply with the NHPA. Managed contacts with client, oversaw budget, conducted research, reviewed and edited cultural resources report. The report included an archaeological survey and testing of a contaminated site near Johnson Lake. All on-site cultural resources personnel were HAZWOPER trained.

**Project Scientist/Architectural Historian — Coyote Springs Development Project, Lincoln County, Nevada, 2007-2008.**

Coordinated effective regulatory strategies to centralize and speed federal reviews of cultural resource reports drafted in preparation for an EIS that analyzes the impacts of a 22,000 acre, environmentally sensitive, planned unit development outside of Las Vegas Nevada. Maintained consultation records and drafted cultural resource components of the NEPA EIS document.

**Project Scientist/Architectural Historian — Horseshoe Grande Project, Soboba Band of the Luiseño Indians, San Jacinto, CA, 2007-2008**

Managed contacts with clients and the Bureau of Indian Affairs and assisted in reviewing and editing the cultural resource report completed in compliance with Section 106 of the NHPA and other applicable regulations and standards for architectural and archaeological surveys in California. Conducted research on historic limekilns in California and prepared document for submittal to client. Also reviewed and edited draft EIS sections for cultural resources for submittal to Bureau of Indian Affairs.

**ENERGY & WATER INFRASTRUCTURE*****Mid-Atlantic Power Pathway Project, Southern and Eastern Shore of Maryland, Potomac Electric Power Company, 2008-2009***

The Mid-Atlantic Power Pathway Project is designed to improve reliability and increase energy imports into the Mid-Atlantic Region by expanding transmission through Southern and Eastern Shore of Maryland. This is subject to Maryland's Certificate of Public Convenience and Necessity (CPCN) and ENTRIX and its sub-contractors prepared the environmental review documents (ERDs) in support of that document. Dr. Ranzetta reviewed all cultural resource reports, visual impact reports, and prepared cultural resource sections for the ERDs for all segments of the Project.

***Project Scientist, Architectural Historian — Enbridge Alberta Clipper Pipeline Project: North Dakota, Minnesota, Wisconsin, 2008-2009 (Client: U.S. Department of State)***

ENTRIX, Inc. is the third-party contractor for the Department of State's Enbridge Alberta Clipper Pipeline Project EIS for the construction of a 326-mile interstate crude oil transportation pipeline from the U.S.-Canada border near Neche, North Dakota to the Enbridge terminal near Superior, Wisconsin. Dr. Ranzetta prepared draft text for cultural sections in EIS documents, coordinated/facilitated consultation with over 48 Native American tribes, provided agency correspondence support, prepared briefing memoranda for DOS staff, provided technical reviews of all cultural resource reports, and identified data gaps. Dr. Ranzetta also coordinated/facilitated interagency consultation with federal and state agencies including the ACHP, BIA, USFS, USACE, as well as the SHPO's of North Dakota, Minnesota, and Wisconsin. Dr. Ranzetta is also preparing draft text for the Programmatic Agreement for the Project and addressing/integrating comments from consulting parties.

***Project Scientist, Architectural Historian, — Keystone TransCanada Pipeline Project, South Dakota, North Dakota, Nebraska, Oklahoma, Illinois, Missouri, and Kansas, 2007-2008 (Client: U.S. Department of State)***

ENTRIX, Inc. was the third-party contractor for the Department of State's Keystone Pipeline Project EIS for the construction of a 1,378-mile interstate crude oil transportation pipeline from the U.S.-Canada border in North Dakota to refineries in Illinois and Oklahoma. Dr. Ranzetta prepared draft text for Programmatic Agreement to satisfy requirements of Section 106 of the National Historic Preservation Act (NHPA), drafted NEPA and NHPA technical assistance documents for the Department of State in preparation for correspondences to dozens of Indian tribes, federal agencies, SHPOs, as well as the Advisory Council on Historic Preservation. Technically reviewed all cultural resource sections of the EIS and prepared text for the tribal and agency consultation sections.

***Project Scientist, Architectural Historian: — Sunstone Pipeline Project – Eastern Oregon, 2008 (Client: Sunstone Pipeline LLC/NRG LLC)***

Dr. Ranzetta served as a Project Scientist/Architectural Historian for the Sunstone Pipeline Project which consists of an approximately 590-mile long natural gas pipeline. ENTRIX, Inc. has been retained by Sunstone Pipeline, LLC, and Natural Resource Group, LLC, to conduct a cultural resources study for a 178.6-mile segment of the pipeline that passes through Malheur, Baker, Union, and Umatilla counties, Oregon. The Sunstone Project is regulated by the Federal Energy Regulatory Commission (FERC) under Section 7(c) of the Natural Gas Act (15USC 717). As such, the project is subject to review under the National Environmental Policy Act (NEPA) and Section 106 of the National Historic Preservation Act (NHPA) (16 USC 470) and its implementing regulations (36 CFR 800). Dr. Ranzetta has prepared an architectural survey work plan, managed fieldwork for architectural historians, consulted with the Oregon SHPO, and reviewed the final report for architectural resources.

***Project Scientist — Bay Division Pipelines #1 and #2 Reliability Upgrade(Hetch Hetchy Aqueduct), San Mateo and Alameda Counties, California, 2007-2009***

Principal author of cultural resources report completed in compliance with Section 106 and CEQA standards and guidelines for the San Francisco Public Utilities Commission. Conducted background research and fieldwork that recorded twenty-three individual resources and two historic districts that included four linear water pipelines that extended 21 miles. Photographed all structures and prepared DPR forms according to California standards. Authored cultural resource technical report as well as the cultural sections of the EIR document. Completed report within the context of a condensed project timeline.

**Project Manager — Emily Evans Water/Utility Line Project, Washington Department of Community, Trade, and Economic Development, Tonasket, WA, 2007**

Oversaw the completion of a cultural resources survey for HUD-funded project to construct utility and water lines to a private residence (and former Indian Allotment property) near rural Tonasket, Washington. Managed client contacts, reviewed and edited cultural resources report for Section 106 compliance, and facilitated client consultation with the Washington Department of Archaeology and Historic Preservation and the Confederated Tribes of the Colville Reservation by preparing agency correspondence. Also assisted in the completion of a cultural resource overview and report for the Colville Tribe.

**FERC RELICENSING****Project Scientist/Architectural Historian — Enloe Dam FERC Re-licensing Project, Okanogan County, Washington, 2007-2009.**

Working with the Okanogan Public Utilities District as a part of a larger hydro-electric licensing effort, Dr. Ranzetta served as an architectural historian/project scientist and technically reviewed the Project's Cultural Resources Report and FERC re-licensing application section to ensure compliance with appropriate FERC regulatory requirements and Section 106 of the National Historic Preservation Act for the project. He also technically reviewed the Aesthetics Resources Technical Report and applicable FERC re-licensing application sections for compliance with FERC requirements. Coordinated the production of Project visual simulations to address interagency comments.

**Project Scientist — Kilarc-Cow FERC Licensing Surrender Application, Shasta County, California, 2008-2009**

Working with Pacific Gas & Electric, drafted the recreation and aesthetics sections for the Draft License Surrender Application for the Kilarc-Cow Project. Conducted fieldwork, photographed recreational and aesthetic resources, evaluated Project impacts to recreational and aesthetic resources by using recreational resource data and visual resource methodologies, coordinated development of GIS maps for technical report and draft LSA sections, drafted technical report, and drafted LSA sections.

**TRANSPORTATION****Project Scientist — Greenbridge – White Center Connector Project (SW 98th Street Project), King County Road Services Division, White Center, WA, 2007**

Conducted cultural resources survey, edited project report, managed budget for pedestrian enhancement project located in White Center, Washington in compliance with Section 106 of the NHPA and NEPA. The survey recorded nine cultural resources within the project APE corridor using the new Washington State Historic Resource Inventory Forms. All forms were prepared to comply with all necessary Section 106 and state survey guidelines. The project report was submitted to the client on budget and on time.

**Project Scientist, Architectural Historian — Lower Crystal Springs Dam Bridge Replacement Project, Hillsborough, San Mateo County, California, 2008**

Working for San Mateo County, co-authored the Historic Resources Evaluation Report (HRER), Historic Property Survey Report (HPSR), and Finding of Effect Report (FOE) for this FHWA/Caltrans Local Assistance Project. Responsibilities included working with Caltrans and San Mateo County to develop appropriate project documentation, drafting reports, and editing DPR523 forms. Project evaluated the NRHP eligible and nationally significant Lower Crystal Springs Dam and developed strategies for minimizing project effects to this important engineering structure.

**Project Manager, Architectural Historian — I-15 Corridor Enhancement Project, Las Vegas, Nevada, 2007**

Edited and re-wrote a historic context and Nevada Historic Resource Inventory (HRI) Forms for suburban residential properties in North Las Vegas and Las Vegas for use by the Nevada Department of Transportation. Conducted research that analyzed the architectural development of Las Vegas from the mid-nineteenth century to present with an emphasis on the mid-twentieth century residential architecture and the creation of the city's suburban landscape.

**HABS/HAER EXPERIENCE**

**Georgetown (DE) United States Post Office, Sussex County, Delaware (HABS No. DE-298 or HABS DEL, 3-GEOTO,3-)**  
For Sussex County Government, Dr. Ranzetta recorded a Depression-era United States Post Office according to HABS/HAER standards. Work included measuring and ink-drawing basement, first floor and second floor plans, conducting historical research, drafting HABS report including architectural description and history, preparing photo-documentation record, assisting HABS large-format photographer Dr. David L. Ames, labeling all photographs, and preparing all materials for submission to HABS. Materials were accepted by HABS, photographs and floor plan are available for viewing at [http://memory.loc.gov/cgi-bin/ampage?collId=hhsheet&fileName=de/de0400/de0414/sheet/browse.db&action=browse&recNum=0&title2=Georgetown%20Post%20Office,%20%20The%20Circle,%20Georgetown,%20Sussex%20County,%20DE&displayType=1&maxCols=2&itemLink=D?hh:1:./temp/~ammem\\_wrfy](http://memory.loc.gov/cgi-bin/ampage?collId=hhsheet&fileName=de/de0400/de0414/sheet/browse.db&action=browse&recNum=0&title2=Georgetown%20Post%20Office,%20%20The%20Circle,%20Georgetown,%20Sussex%20County,%20DE&displayType=1&maxCols=2&itemLink=D?hh:1:./temp/~ammem_wrfy)

**St. Paul's Episcopal Church, Nantucket, Barnstable County, Massachusetts (HABS No. MA-1669 or HABS MASS,10-NANT,110-)**

As part of a larger student team for the prestigious Preservation Institute: Nantucket, Dr. Ranzetta recorded the St. Paul's Episcopal Church constructed in 1902. Dr. Ranzetta completed a hand drawn sheet depicting the church's elaborate Gothic-style doors. Dr. Ranzetta completed the drawing according to HABS/HAER guidelines and the Project was accepted by HABS/HAER. The drawing is at <http://memory.loc.gov/cgi-bin/displayPhoto.pl?path=/pnp/habshaer/ma/ma1600/ma1669/sheet&topImages=00009a.gif&topLinks=00009r.tif,00009a.tif&title=&displayProfile=0>.

**HISTORIC STRUCTURE/BUILDING RECORDATION PROJECTS**

**Project Manager, Architectural Historian – Portland Public Schools Historic Building Assessment, Portland, Oregon 2009.**

ENTRIX was retained by Portland Public Schools (PPS) to conduct a historic building assessment of the school district's 98 properties. The assessment included identifying and evaluating the significance of the district's historic school buildings, providing management and conservation recommendations, and presenting the findings to a number of public boards and commissions. The project resulted in the compilation of a 890 +/- page document that was completed within 3 ½ months.

**Architectural Historian — Finney House Building Evaluation Project, University of Oregon and Montana Heritage Commission, Virginia City, Montana, 2008.**

As part of an interdisciplinary team from the University of Oregon's Historic Preservation Department, Dr. Ranzetta assisted in the recording and structural evaluation of the c. 1864 Finney House, one of the last remaining horizontal log buildings in Nevada City, Montana (a former mining town), to exist at its original location. Retained by the Montana Heritage Commission, Dr. Ranzetta conducted architectural investigations of the interior and exterior historic fabric, digitally photographed the building, completed measured drawings, and assisted in the preparation of a final report for MHC review. The significant findings of the report may alter how the building is currently interpreted to the public.

**Project Principal/Sole Proprietor — Phase III – Phase VIII of the St. Mary's County, Maryland Survey Project, 1996-2002. Client: Maryland Historical Trust & St. Mary's County Government.**

Integrated historic preservation into the overall land use planning process. Authored the county's first historic preservation plan, facilitated public meetings related to the plan, and organized a working group to establish priorities and strategies for the overall document. Reviewed land use proposals for impacts upon historic resources and scenic corridors, provided design and site recommendations for new construction on individual historic buildings. Documented several hundred historic sites that were included in the Maryland Inventory of Historic Places, photographed several hundred historic sites according to MHT standards that included 5 x 7 black-and-white processing on fiber-based paper and labeling, authored over twelve National Register Nominations, and authored a National Historic Landmark nomination for Sotterley Plantation.

**Project Principal — Historic Structure Analysis of Clocker's Fancy. Client: Historic St. Mary's City, 2000.**

Teaming with John O'Rourke and Gus Kiorpes, conducted a site investigation of Clocker's Fancy, an early nineteenth century dwelling situated near Historic St. Mary's City. Conducted documentary research, a site

investigation and historic fabric analysis and identification, prepared a site plan and annotated measured drawing for the house. Submitted final report to client on schedule.

**Project Principal/Sole Proprietor/Advisor — Sotterley Plantation Rehabilitation Project, Hollywood, Maryland. Client: Sotterley Foundation, 1998.**

Prepared Annotated bibliography, assembled historical research, compiled yearly maintenance documentation, and organized/archivally stabilized historic photographs collection in preparation for a multi-million dollar rehabilitation of Sotterley Plantation and one of the National Trust's 11 Most Threatened Historic Buildings in America in 1997. Also served on the Foundation's Restoration Committee and provided advice concerning the building's history and the integrity of historic fabric. Also authored the National Historic Landmark for the property.

## **EMPLOYMENT HISTORY**

- Cultural Resources Specialist, ENTRIX, 10/2006 - present
- Adjunct Professor, University of Oregon, Eugene, OR, 2007-2009.
- Adjunct Professor, University of Washington – Vancouver, 2006, 2008.
- Survey and Registration Coordinator, Oregon State Historic Preservation Office, 2006.
- Review and Compliance Coordinator, Oregon State Historic Preservation Office, 2003-2006.
- Sole Proprietor, Contract Architectural Historian, Maryland, Delaware, Virginia, 1996-2002.
- Senior Architectural Historian, (part-time) KCI Technologies, 2000-2001.
- Architectural Historian, (part-time) AD Marble, 2003.
- Research Assistant, Center for Historic Architecture and Design, University of Delaware, 1994-1996, 2001.

## **PUBLICATIONS**

### **PEER-REVIEWED, PUBLISHED PAPERS**

- Ranzetta, Kirk E., 2009, *I'm Go'in Down County: An Architectural Journey Through St. Mary's County*, Crownsville, MD, Maryland Historical Trust Press, forthcoming.
- \_\_\_\_\_, 2006, "The Dating of Tobacco Barns in St. Mary's County, Maryland: Experimenting with the Archaeology of Architecture," *Proceedings of the Second International Congress of Construction History*, Cambridge, UK: Routledge, 2006.
- \_\_\_\_\_, 2006, *The Changing Paradigms of Agricultural Knowledge: The Policy, Memory, and Culture of the Maryland Tobacco Buyout*, Dissertation, University of Delaware.
- \_\_\_\_\_, 2006, "The Myth of Agricultural Complacency: Tobacco Barns of St. Mary's County, 1790-1890" in Kim Hoagland and Kenneth Breisch, eds. *Perspectives in Vernacular Architecture X*, Knoxville, TN: University of Tennessee Press.
- \_\_\_\_\_, 2003, Review of Thomas F. King's, *Thinking About Cultural Resource Management: Essays from the Edge*, Walnut Creek, CA: Alta Mira Press, 2002 in *Vernacular Architecture Newsletter* No.97.

### **PROJECT REPORTS**

- Demuth, Kimberly, et al, Emily Evans Utility/Water Line Project, Cultural Resources Section 106 Report. Seattle, WA: ENTRIX, 2007 (Contributing author).
- Ranzetta, Kirk E. et. al. Greenbridge – White Center Connector (SW 98th Project), Cultural Resources Technical Report. Seattle, WA: ENTRIX, 2007. (Contributing author)

- \_\_\_\_\_. Bay Division Pipeline Reliability Upgrade Project: Cultural Resources Technical Report (Draft). Seattle, WA: ENTRIX, 2008. (Principal author)
- \_\_\_\_\_. Standards and Guidelines for Documenting Historic Resources in Oregon. Salem, OR: Heritage Conservation Division, Office of Parks and Recreation Department, 2006. (Principal author)
- \_\_\_\_\_. John O'Rourke, and Gus Kiorpes. "A Report on the Structural Integrity, Historic Architecture, Stabilization, and Preservation of Clocker's Fancy." Report for Historic St. Mary's City Commission, February 2002.
- \_\_\_\_\_. Painting A Self-Portrait: A Historic Preservation Plan for St. Mary's County, Maryland. Leonardtown, Md: St. Mary's County Department of Planning & Zoning. March, 2000.
- \_\_\_\_\_. Final Report: Phase VI, St. Mary's County Historic Sites Survey, Reconnaissance Architectural Survey and Photography. Leonardtown, MD: St. Mary's County Department of Planning and Zoning. October, 2000.
- \_\_\_\_\_. Final Report: Phase V, St. Mary's County Historic Sites Survey, Multiple Property Nomination and Preservation Plan. Leonardtown, MD: St. Mary's County Department of Planning and Zoning, October 1999.
- \_\_\_\_\_. Final Report: Phase IV, St. Mary's County Historic Sites Survey, Milestown (7th) and St. Inigoes (1st) Districts. Leonardtown, MD: St. Mary's County Department of Planning and Zoning, 1998.
- \_\_\_\_\_. Architectural Investigations at the St. Clements Shores WWTP Rapid Infiltration Basins. Report for EPOCHS PAST, September, 1998.
- \_\_\_\_\_. Final Report: Phase III, St. Mary's County Historic Sites Survey, Leonardtown (3rd) and Patuxent (6th) Districts. Leonardtown, Md: St. Mary's County Department of Planning and Zoning, 1997.
- \_\_\_\_\_. Historic American Building Survey, Georgetown United States Post Office, HABS No. DE-298. Newark, DE: Center for Historic Architecture and Engineering, College of Urban Affairs and Public Policy, University of Delaware, 1994-1995.
- \_\_\_\_\_. "Architectural Evolution" in Building Analysis of the African Meeting House. Preservation Institute: Nantucket, 1994.

#### **NATIONAL REGISTER NOMINATIONS**

- 1994 Riverview, Port Royal, Virginia (NR)
- 1998 Buena Vista, Leonardtown, Maryland (NR)
- 2000 St. Mary's County Jail, Leonardtown, Maryland (NR\*)
- 2000 Blair's Purchase, Bushwood, Maryland (NR\*)
- 2000 All Saints Episcopal Church, Oakley, Maryland (NR\*)
- 2000 Ellis Grist Mill, Bushwood, Maryland (NR\*)
- 2000 All Faith Church, Charlotte Hall, Maryland (NR)
- 2000 Historic Resources of St. Mary's County, 1600-1950 (Multiple Property, NR\*)
- 2001 Sotterley Plantation, Hollywood, Maryland (NHL)
- 2002 Duke Building, Leonardtown, Maryland (NR\*)
- 2002 Eldon, Leonardtown, Maryland (NR\*)
- 2002 Leonardtown Bank of the Eastern Shore Trust Company, Leonardtown, Maryland (NR\*)
- 2002 Fenwick House, Leonardtown, Maryland (NR\*)
- 2002 St. Paul's M.E. Church, Leonardtown, Maryland (NR\*)
- 2002 Addendum to Quaker Hill Historic District, Wilmington, Delaware (NR, draft)
- 2003 The Historic Resources of Delaware's Underground Railroad (Multiple Property, NR-draft.)
- 2004 Abell House, Leonardtown, Maryland (NR)
- 2006 Bisbee Hotel, Klamath Falls, Oregon (NR)

2006 Smith House, Portland, Oregon (NR)

\* Approved by the Maryland Governor's Consulting Committee

**COMMITTEES & AFFILIATIONS**

- Board of Directors, Friends of Jefferson Patterson Park & Museum (former)
- Board of Directors, Martha Barnes Foundation (former)
- Restoration Committee, Sotterley Plantation (former)
- St. Mary's County Historic Preservation Commission, Advisor (former)

**ACADEMIC EXPERIENCE, GUEST LECTURES AND PRESENTATIONS**

- Adjunct Professor, University of Oregon, Historic Preservation Program, 2007-2009.
- Adjunct Professor, Washington State University – Vancouver, 2006, 2008.
- Second International Congress on Construction History, Cambridge, United Kingdom, 2006.
- Utility Roundtable on Cultural Resources (UROC), guest presenter, Troutdale, Oregon, 2007.
- Western Association of Foresters, guest presenter, Oregon State University, 2006.
- Oregon Energy Coordinators Association, 2006.
- National Trust for Historic Preservation Annual Conference, Session Organizer and Facilitator, "Preserving Cultural Landscapes Through Civic Agriculture," Portland, Oregon, September 2005.
- University of Oregon, federal and state historic preservation regulations, 2003-2006.
- HUD/DOE workshop for federal grant recipients, Portland/Eugene, OR, 2004-2006.
- St. Mary's College of Maryland Environmental Studies Conference, April 2003.
- Talbot County Historical Society, Easton, Maryland, October 2000.
- Vernacular Architecture Forum, Duluth, Minnesota, June 2000.
- Patuxent River Symposium, Solomons, Maryland. April 1999.
- St. Mary's College, St. Mary's City, Maryland. April 1999.
- Mary Washington College, Fredericksburg, Virginia. 1998-1999.
- University of Delaware, Newark, Delaware. 1997-1998.
- Vernacular Architecture Forum, Lawrence, Kansas. May 1996.



### Discipline/Specialty

- SEPA/NEPA compliance
- Cultural and historic resources permitting
- Historic resources assessments
- NHPA compliance
- Environmental impact assessments
- Community and regional planning
- Public involvement

### Education

- M.S., University of Oregon, Eugene, Historic Preservation: 1999
- M.C.R.P., University of Oregon, Eugene, Community and Regional Planning: 1999
- B.A., University of Virginia, Charlottesville, Art History: 1991

### Safety/Certifications

- First Responder Awareness Level Course, EPA Region 10, 2005

### Training/Certifications

- Project Management Training, 2001
- NEPA Training, 2000
- Section 106 Training for Professional Practitioners, NPS, 2001
- Title IX and Environmental Justice Training, WSDOT, 2002

### Professional Affiliations

- American Planning Association

### Honors and Awards

- Graduate Teaching Fellowships, 1997 - 1999
- Student Originated Studies Grant, University of Oregon, 1999
- J & E Zimmerman Academic Scholarship, 1998-99

### Summary of Qualifications

**Jeannie Brush Cziesla, MS, MCRP** is experienced in historic preservation, land use planning, permitting, and public involvement. She has nine years experience in architectural analysis, preservation planning, and community planning. She has conducted reviews of applications for new construction and alterations to historic properties, has authored code for the local jurisdictions, and has conducted surveys of historic properties for compliance with Section 106 of the National Historic Preservation Act. She has compiled NRHP Nominations, Federal Income Tax Credit Applications, and has participated in Historic American Building Survey (HABS) projects. Ms. Cziesla has also authored reports that develop strategies for strengthening the relationship between historic preservation and growth management policies and that provide economic development strategies for historic communities. Her planning experience includes comprehensive plan updates, comprehensive plan environmental impacts statements, and public meeting facilitation. She has also conducted built environment analyses and managed NEPA environmental impact statements (EISs), environment assessments (EAs), and SEPA Checklists. Ms. Cziesla served on the Board of the Ballard Avenue Landmark Historic District in Seattle, Washington for three years.

### Relevant Experience

#### Cultural Resources Projects

##### **Enloe Dam Licensing Project - Okanogan County, WA.**

In compliance with Section 106 of the National Historic Preservation Act, Entrix, Inc. conducted a cultural resources study for the Enloe Dam Licensing Project. Ms. Cziesla serves as architectural historian responsible for the historic properties inventory. The project will include an assessment of impacts to historically significant resources, including a National Register site.

##### **San Clemente Dam Seismic Safety Project EIS/EIR - Monterey, CA.**

In compliance with Section 106 of the National Historic Preservation Act, Entrix, Inc. conducted a cultural resources study for the San Clemente Dam Seismic Safety Project. Ms. Cziesla was architectural historian responsible for the historic properties inventory and authored sections of the Cultural Resources Section 106 Technical Report and EIS/EIR. The project included an assessment of impacts to historically significant resources including a National Register-eligible historic district.

##### **Bridging the Valley Project, Washington and Idaho.**

Assisted with Phase II of the cultural resources section of the project for the Spokane Regional Transportation Council. The project intends to

---

separate vehicle traffic from train traffic along a 42-mile corridor from Spokane, Washington and Athol, Idaho. The separation of railroad grades from roads will require the construction of overpasses or underpasses at most existing rail and road intersections and relocating the existing Union Pacific Railroad track to the Burlington Northern Santa Fe mainline right-of-way. ENTRIX is leading the agency coordination effort on cultural resources, providing an analysis of National Register eligibility, providing the determination of project effects, the development of mitigation measures and the production of a Section 106 Technical Report.

**Spokane River Hydroelectric Relicensing Project, Washington and Idaho.**

Assisted with the preparation of the Inventory and Evaluation Cultural Resources Reports for Avista Corporation's relicensing of the Spokane River Project with the Federal Energy Regulatory Commission. The inventory included over 260 miles of shoreline around six reservoirs including Coeur d'Alene Lake. Completed historic sites inventory forms for resources in Washington and Idaho and entered data in Statewide Databases.

**Arroyo-Seco Community Linkages 5 Project, Northeast Los Angeles, California.**

Participated on a multi-discipline urban design team whose purpose was to strengthen the connections between the Arroyo Seco Parkway (designated a National Scenic Parkway) and the cultural, natural, and recreational resources located adjacent to the Parkway and the Metro Gold Line Light Rail Corridor within the City of Los Angeles. The project included research, fieldwork, meetings, and design charrette work sessions with citizens within the community, agency representatives, and City staff. Co-authored a report that contributed to a Master Plan document with guidelines for the City of Los Angeles and implementation strategies for local, state, and federal agencies.

**Sand Point Historic District, Seattle, Washington.**

Entrix is providing consultant services to the Seattle Parks and Recreation Department for the Sand Point Historic District. Meet with property owners and consult with architects regarding design changes to the buildings in the historic district. Author impacts analyses and interpret and implement the district's preservation regulations. Consult with the Washington Office of Archeology and Historic Preservation regarding concurrence on impacts.

**Ford Motor Company Parts Building Assessment, Seattle, Washington.**

Ms. Cziesla served as architectural historian for the preparation of a preliminary historical overview regarding the architectural design and historical use of the building and subsequent Seattle Landmarks nomination. Ms. Cziesla conducted the field review of the building photographing and recording its design and specific architectural elements. She authored a technical memorandum describing the character-defining features of the building and assessing its eligibility for local, state, and national registers.

**Kelso to Martin's Bluff Rail Project EIS, WSDOT, Washington.**

Conducted cultural resource field surveys, completed a cultural resource discipline report, and an EIS section for the Kelso to Martin's Bluff Rail project totaling 18 miles. Documented 60 historic properties within the project's area of potential effect. Ten (10) properties were determined eligible for listing in the National Register of Historic Places. Only one property of the ten eligible structures was identified as having potential adverse effects resulting from the proposed rail line upgrade. WSDOT Rail, OAHP, and FHWA are currently developing a memorandum of agreement for this one property. Utilized Washington OAHP's electronic historic inventory database to submit completed inventory forms.

**Vancouver Rail Yard Project EIS, WSDOT, Washington.**

Conducted cultural resource field surveys and completed a cultural resource discipline report for the Vancouver Rail Yard project. Documented seven (7) historic properties within the project's area of potential effect. One (1) property was identified as having adverse effects resulting from the proposed rail upgrade. Together with WSDOT and the Washington State Office of Archaeology and Historic Preservation, authored a Memorandum of Agreement (MOA) for the property. Utilized Washington OAHP's electronic historic inventory database to submit completed inventory forms.

**National Register Eligibility Analysis, City of Tukwila Public Works Department.**

Conducted a National Register Eligibility Analysis for a 1908 historic residence located in Tukwila, Washington. A title search and a research of the City of Tukwila and King County Historical Society records were performed to collect readily available information about the property. Additionally, conducted interviews with the existing property owners to determine the history of the property and whether there have been any alterations. Authored a technical report for submittal to the Washington Office of Archaeology and Historic Preservation.

**Bigelow Gulch/Forker Road Urban Connector Project, Spokane County/WSDOT, Washington.**

Performed a cultural resources assessment of the Bigelow Gulch/Forker Road alignment in Spokane County, Washington. The project products included a cultural resources technical report in compliance with Section 106 of the National Historic Preservation Act and a Section 4(f) report. Specifically, documented 16 historic properties within the project's area of potential effect. Also authored 4(f) report for historic property issues. Utilized Washington OAHP's electronic historic property inventory database for the documentation of the historic properties.

**Kitsap County Emergency Services Readiness Center, Washington Military Department NEPA Environmental Assessment (Kitsap County), WA.**

Conducted analysis of historic buildings on project site and feasibility of National Register nomination. Consulted with the Washington Office of Archaeology and Historic Preservation and local historical society. Authored cultural resources component of EA.

**Whatcom Public Utility District Bellingham-Squalicum Electric Project (Whatcom County), WA.**

Conducted architectural analysis of historic structures and historic district for 7-mile project corridor, from the Bonneville Power Administration's Dewey Road substation to industrial facilities along the Bellingham waterfront. Consulted with the Washington Office of Archaeology and Historic Preservation and local agencies. Co-authored cultural and historic resources component of expanded SEPA Checklist.

**Economic Development and Cultural Resource Management Project (City of Oakland and Oakland Community Response Team), Oakland, OR.**

Project manager for economic development and historic preservation planning project. Project components included literature review, case study research, focused interviews, economic development plan, inventory update of historic resources, and a design guidelines manual.

**Cultural Resources Analysis—Los Angeles Unified School District, Los Angeles, California.**

As required under the California Environmental Quality Act (CEQA), identified and evaluated approximately 50 historic properties in five Los Angeles neighborhoods to determine the impact of the project on cultural resources. Cultural resources documentation included an intensive field survey of the buildings

---

known to be slated for demolition, a record search of previous cultural resources studies of sites in or near the project area, and a review of historic maps and city directories.

**Historical Survey and Analysis for Ferry Street Bridge (Heritage Research Associates) Eugene, OR.**

Conducted historical research, interviewed key public officials, and authored report on the occurrence of minority communities in the Ferry Street Bridge vicinity for Section 106 compliance for the Ferry Street Bridge expansion project.

**National Register Nomination, E. C. Peery Building (Dr. Sally Cole), Scio, OR.**

Completed National Register Nomination for property owner of an Italianate commercial building in downtown Scio, Oregon. Conducted research, photographed site, and authored nomination. Approved by National Park Service August, 1998.

**National Register Nomination, Horace J. and Anna Shinn Cottage (Bunny Jamison), Cottage Grove, OR.**

Completed National Register Nomination for property owner of a Queen Anne Cottage in Cottage Grove, Oregon. Conducted research, photographed site, and authored nomination. Approved by National Park Service May, 1998.

**Federal Income Tax Credit Application Project (Dr. Sally Cole) Scio, OR.**

Completed Federal Income Tax Credit application for property owner in Scio, Oregon. Assessed existing condition of building, documented alterations and intended maintenance, recommended maintenance protocol, and prepared budget for rehabilitation work.

**Franz-Dunn House HABS Project (Benton County Parks), Benton County, OR.**

Measured exterior and interior elevations of the Franz-Dunn House (1862) using transects and delineated west elevation of building in ink on Mylar.

**Reconnaissance Survey of the West Side Neighborhood (City of Eugene) Eugene, OR.**

Conducted survey of historic buildings in West Side neighborhood in Eugene, Oregon. Prepared site plans and documented condition, materials, date of construction, ownership, and alterations of buildings in neighborhood for historic district feasibility analysis.

**City of Eugene Land Use Code Update (City of Eugene) Eugene, OR.**

Authored and revised code for portions of the City of Eugene Land Use Code Update.

## **Planning Projects**

**San Clemente Dam Seismic Safety Project EIS/EIR - Monterey, CA.**

Conducted visual resources analysis for the EIS/EIR. Identified key viewpoints of the project area during construction and operations and assessed short-term and long-term visual impacts.

**Fiber Optic Cable Alignment Project (Williams Communications), OR and WA.**

The project included placement of conduits in existing public and private rights-of-way, construction of three optical amplification stations, and construction of two points of presence (POPs). Coordinated and prepared federal, state and local permits and supporting documentation for jurisdictions and agencies on the alignment, from Portland, OR to Seattle, WA. Coordinated work with archaeological/cultural resource subconsultant. Assisted in the preparation of expanded SEPA Checklist, Joint Aquatic Resources Permit Application (JARPA) and the Joint Permit Application (JPA). Met with agencies prior to submitting.

---

applications to facilitate permit process and ensure compliance with local land use regulations. Also co-authored constraints analysis for the fiber optic line project that summarized the environmental regulations that pertained to the project, the corresponding permit applications and documents that would be required for completion of the project, and the schedule for completing them.

**Bonneville Power Administration - Sea West Condon Wind Farm EIS.**

Served as built environment technical lead for the NEPA EIS for a proposed 25 MW wind farm project in Eastern Oregon. The project included public involvement support, NEPA compliance, and agency coordination, including ESA compliance.

**Wild Horse Wind Farm Application Review and EIS (Washington State Energy Facility Site Evaluation Council) - Washington.**

Conducted built environment analyses for the proposed wind farm and for a Potential Site Study which examined potential environmental issues for the applicant to address in the Application for Site Certification to EFSEC. The project size would be up to 400MW and is located in Kittitas County, near Ellensburg.

**Roosevelt Landfill Windfarm Project SEPA Checklist and Conditional Use Permit Application (The Wind Turbine Company), Klickitat County, WA.**

Served as assistant project manager and conducted built EA of a proposed 15-MW wind energy project in Klickitat County, Washington. The analysis included an evaluation of socioeconomic, land use, recreation, transportation, visual resources, health and safety, and public services and utilities impacts. Results of the evaluation were included in the SEPA environmental checklist. Completed conditional use application, which addressed approval criteria.

**Cherry Hill Windfarm Project SEPA Checklist (Cherry Hill LLC), Klickitat County, WA.**

Conducted built EA of a proposed 9-MW wind energy project in Klickitat County, Washington. The analysis included an evaluation of socioeconomic, land use, recreation, transportation, visual resources, health and safety, and public services and utilities impacts. Results of the evaluation were included in the SEPA environmental checklist.

**Condon Windfarm Project, NEPA EIS (Bonneville Power Administration) Gilliam County, OR.**

Conducted built EA of a proposed two-phase 49.8-MW wind energy project in Gilliam County, Oregon. The analysis included an evaluation of socioeconomic, land use, recreation, transportation, visual resources, health and safety, and public services and utilities impacts. Results of the evaluation were included in the EIS.

**Santiam-Bethel Transmission Project NEPA Environmental Assessment (Bonneville Power Administration) Linn and Marion Counties, OR.**

Conducted built EA of a 17-mile transmission line in Linn and Marion Counties, Oregon. The analysis included an evaluation of socioeconomic, land use, recreation, transportation, visual resources, health and safety, and public services and utilities impacts. Results of the evaluation were included in the EA.

**McNary-John Day Transmission Line Routing Study and NEPA EIS, (Bonneville Power Administration) Benton and Klickitat Counties, WA.**

Conducted built environmental analysis of a proposed 70-mile 500-kV electric transmission line along the Columbia River in Washington. Project manager for the FEIS portion of the project. The analysis included an integrated cultural resource evaluation using GIS to evaluate routing options, impacts, and mitigation. Responsibilities included project coordination of the EIS, inventory and analysis of historic structures;

evaluation of socioeconomic, land use, recreation, transportation, visual resources, and public services and utilities impacts; and preparation of sections of the EIS.

**Starbuck Power Project NEPA EIS (Washington State Energy Facility Site Evaluation Council and Bonneville Power Administration), Oregon and Washington.**

Served as assistant project manager and draft EIS coordinator for a project involving a 1,200-MW combustion turbine power project in Columbia County in eastern Washington. Reviewed and prepared portions of the draft EIS, including the project description and executive summary, and coordinated graphics and production.

**Comprehensive Plan Update SEPA EIS, City of Sammamish, Washington.**

Conducted land use and built environment analyses for a SEPA EIS, including affected environment, impacts, and mitigation measures sections.

**Comprehensive Plan Update, City of Shelton, Washington.**

Analyzed the city's existing comprehensive plan for its compliance with Washington State's Growth Management Act requirements for comprehensive plans. Co-authored new comprehensive plan language, coordinated with biologists for the plan's compliance with Critical Areas and Best Available Science, and coordinated public involvement for the project.

## **Employment History**

- ENTRIX, Inc., Project Scientist, 2004 – present
- Jones & Stokes, Bellevue, WA, 1999 – 2004
- University of Oregon, Eugene, OR, 1997 – 1999
- Franklin Street Communications, Richmond, VA, 1994 – 1996
- Circuit City Corporate Headquarters, Richmond, VA 1991 – 1994

## **Publications**

### **Peer-Reviewed, Published Papers**

- Brush, Jean. 1999. "Linking Historic Preservation with Growth Management: A Case Study of the King's Hill Historic District in Portland, Oregon."

**DISCIPLINE/SPECIALTY**

- Historical preservation
- Historical structures
- Planning/Design
- Cultural Resources Management
- Technical writing
- Project management

**EDUCATION**

- M.S., Historic Preservation  
University of Oregon at Eugene.  
December 2007
- B.A., Political Science and  
Women's Studies, Vassar  
College, Poughkeepsie, NY.  
June 1991

**HONORS AND AWARDS**

- John Yeon Research Fellowship,  
2006-2007
- Graduate Teaching Fellowships,  
2004-2007
- Elizabeth Walton Potter  
Scholarship, 2006

**TRAINING/CERTIFICATIONS**

- Section 106 Essentials, Advisory  
Council on Historic  
Preservation, 2007
- Project Management, Adobe  
Systems, 2000
- Technical Writing, Adobe  
Systems 1995
- PADI Open Water Diver, 1997

**SAFETY/CERTIFICATIONS**

- Red Cross CPR/First Aid,  
current

**PROFESSIONAL AFFILIATION**

- National Trust for Historic  
Preservation
- Historic Seattle

**SUMMARY OF QUALIFICATIONS**

Ms. Flathman is an experienced architectural historian, who has supported educational institutions, public agencies, and private developers on historic preservation projects. Her expertise includes surveying and documenting historical properties, conducting building assessments, developing preservation plans, authoring nominations to the National Register of Historic Places, and preparing materials for public dissemination. Over the past five years, Ms. Flathman has worked with historic resources in California, Oregon, Washington, Maryland, Idaho, Louisiana, British Columbia, and Italy. Ms. Flathman has also taught courses in architecture at the University of Oregon. Her current responsibilities include performing cultural resource surveys, conducting archival research, determining eligibility to register registers, authoring historic property nominations, and assisting clients in compliance with local, state, and national historic preservation ordinances including Section 106 of the National Historic Preservation Act and Section 4 (f) of the Department of Transportation Act.

**RELEVANT EXPERIENCE*****Cultural Resources Specialist – Seattle Yacht Club, Seattle, Washington***

Ms. Flathman assists with the analysis of effects of the SR520 Bridge Replacement project on the National Register listed Seattle Yacht Club. Her responsibilities including developing a strategic plan for the club, reviewing cultural resources reports and surveys, consulting with agencies and local preservation groups, and authoring correspondence.

***Architectural Historian — Georgetown Steam plant, Seattle City Light, Seattle Washington***

In compliance with Section 106 of the National Historic Preservation Act, ENTRIX conducted a cultural resources study for the Georgetown Steam plant project. Ms. Flathman served as architectural historian responsible for the historic properties inventory and sections of the cultural resource report that assess the impacts to this National Historic Landmark.

***Architectural Historian/ Principal Author — Aubrey Watzek House National Historic Landmark Nomination, Portland, Oregon***

Ms. Flathman serves as architectural historian and principal author for the preparation of a National Historic Landmark nomination for the Aubrey Watzek House, for which she is conducting research into the history and significance of the house. She is responsible for verifying the structure's design information and specific architectural elements by utilizing photographs, architectural plans, and other archival materials. Ms. Flathman is authoring the nomination describing the character-defining features of the building and assessing its eligibility as a National Historic Landmark. Ms. Flathman is consulting with the National Park Service staff to develop the nomination.

***Architectural Historian-Irvington Neighborhood Survey Project, Irvington Community Association, Portland, Oregon***

Ms. Flathman serves as an architectural historian in assisting the Irvington Community Association in managing the largest volunteer-led architectural survey ever conducted in Oregon. The project involves collecting data on approximately 2,500 properties within the Irvington neighborhood in Portland, Oregon. We are conducting two orientation sessions to familiarize volunteers with architectural survey techniques, conducting a sample survey of 100

properties for use during the orientation sessions, performing data checks, and completing a historic context, research design, and final report.

***Architectural Historian – Sand Point Historic District, Seattle, Washington***

ENTRIX provides annual consultant services to the Seattle Parks and Recreation Department for the Sand Point Historic District as the Historic Preservation Coordinator. Ms. Flathman and other ENTRIX architectural historians are responsible for coordinating with the agencies involved with the various properties to ensure all activities carried out are compatible with design guidelines set forth in the Historic Preservation Maintenance Plan for the District. As Prime Consultant, we review all proposed design work, coordinate with the building owners, applicants and the architects, and consult with the Washington Department of Archaeology and Historic Preservation (DAHP) on projects with adverse effects.

***Architectural Historian — Enloe Dam Relicensing, Okanogan, Washington***

In compliance with Section 106 of the National Historic Preservation Act, ENTRIX conducted a cultural resources study for the Enloe Dam Relicensing project. Ms. Flathman is responsible for the historic properties inventory, sections of the cultural resource report that assesses the impacts to historically significant resources, sections of the historic property management plan, and coordinating activities for the confidential workgroup of consulting agencies and tribes.

***Architectural Historian -Alberta Clipper Project-***

Ms. Flathman assists with the Section 106 Process for the Alberta Clipper project. Her responsibilities include reviewing cultural resources reports and surveys, authoring determination of effects letters, and participating in consultation discussions with Indian tribes and State Historic preservation officers.

***Architectural Historian - Keystone Pipeline project***

Ms. Flathman assists with the Section 106 Process for the Keystone Pipeline Project. Her responsibilities include reviewing cultural resources reports and surveys, authoring determination of effects letters, and participating in consultation discussions with Indian tribes and State Historic preservation officers.

***Architectural Historian – Sunstone/Williams Pipeline***

In compliance with Section 106 of the National Historic Preservation Act, ENTRIX conducted a cultural resources study for the Sunstone/Williams Pipeline project. Ms. Flathman served as architectural historian responsible for field identification and historic properties inventory on the 250+ mile project area.

***Architectural Historian — Woodinville Duvall Intersection Improvement Project, King County, Washington***

In compliance with Section 106 of the National Historic Preservation Act, ENTRIX conducted a cultural resources study for this project. Ms. Flathman serves as the project's architectural historian, responsible for the historic properties inventory and sections of the cultural resource report that assesses the impacts to historically significant resources.

***Architectural Historian — NE Novelty Hill Road Survey, King County, Washington***

In compliance with Section 106 of the National Historic Preservation Act, ENTRIX conducted a cultural resources study for the Novelty Hill Road replacement project. Ms. Flathman serves as architectural historian responsible for the historic properties inventory and sections of the cultural resource report that assess the impacts to historically significant resources.

***Architectural Historian — South Park Bridge Survey, King County, Washington***

In compliance with Section 106 of the National Historic Preservation Act, ENTRIX conducted a cultural resources study for the South Park Bridge replacement project. Ms. Flathman serves as architectural historian responsible for the historic properties inventory and sections of the cultural resource report that assesses the impacts to historically significant resources.

***Architectural Historian — Standard Oil Building City Landmark Nomination, Seattle, Washington***

Ms. Flathman served as architectural historian for the preparation of a preliminary historical overview regarding the architectural design and historical use of the building. She conducted the field review of the building, photographing and recording its design and specific architectural elements. She also authored sections of the



nomination, describing the character-defining features of the building and assessing its eligibility as a Seattle Landmark. Ms. Flathman presented her findings of the nomination to the City for Seattle Landmarks Board.

***Architectural Historian — Bandaret Bridge Survey, King County, Washington***

In compliance with Section 106 of the National Historic Preservation Act, ENTRIX conducted a cultural resources study for the Bandaret Bridge replacement project. Ms. Flathman served as the architectural historian responsible for the historic properties inventory and sections of the cultural resource report that assess the impacts to historically significant resources.

***Architectural Historian — Greenbridge Connector Project, King County, Washington***

In compliance with Section 106 of the National Historic Preservation Act, ENTRIX conducted a cultural resources study for the Greenbridge Connector Project. Ms. Flathman serves as the project's architectural historian responsible for the historic properties inventory. The project will include an assessment of impacts to historically significant resources.

***Architectural Historian — Darigold Building City Landmarks Nomination, Seattle, Washington***

Ms. Flathman served as architectural historian for the preparation of a City of Seattle Landmarks nomination regarding the architectural design and historical use of the building. Ms. Flathman authored sections of the nomination, describing the character-defining features of the building and assessing its eligibility as a Seattle Landmark.

***John Yeon Graduate Research Fellow — University of Oregon, Eugene, Oregon***

On behalf of the University of Oregon's Office of External Relations and Communications, Ms. Flathman assisted in the management of two historic properties for the University. She was responsible for developing publicity materials, organizing visits to properties, giving presentations on the properties, and co-authoring the Preservation Plan.

***Historic Preservation Planning Intern — City of Eugene Planning Department, Eugene, Oregon***

Ms. Flathman wrote nominations to the National and City Historic Registers, reviewed historic property alteration applications, responded to inquires from the public, and developed public education materials.

***Graduate Research Fellow — University of Oregon, Department of Architecture, Eugene, Oregon***

Ms. Flathman assisted an architecture professor in documenting the history and development of rural towns of eastern Oregon. She co-authored a paper presented at the International Seminar on Urban Morphology in Stockholm, Sweden.

## **EMPLOYMENT HISTORY**

- ENTRIX, Inc., Senior Staff Scientist, February 2007 to present
- University of Oregon at Eugene, Research Fellow, various positions January 2005 to July 2007
- City of Eugene, Planning Department, Historic Preservation Planning Intern, April 2006-September 2006
- Adobe Information Systems, Various Positions (Program Manager, Project Manager, Sr. Business Systems Analyst, Training Specialist), June 1994 to June 2003

## **PUBLICATIONS**

### **PEER-REVIEWED, PUBLISHED PAPERS**

- Jenny Young and Jennifer Flathman, 2006, "Character and Spatial Characteristics of the Towns of Wheeler, County, Oregon," International Seminar on Urban Morphology, Conference Proceedings.

### **PEER-REVIEWED, PUBLISHED ABSTRACTS**

- Jennifer Flathman, 2007, "The Watzek House." *The ASHP Journal*. May 2007

**DISCIPLINE/SPECIALTY**

- Historic Preservation
- Cultural Resource Management
- Community and Strategic Planning
- Cultural Landscapes and Traditional Cultural Places
- National Heritage Areas

**EDUCATION**

- M.C.R.P, Community and Regional Planning, University of Oregon, 2009
- M.S., Historic Preservation, University of Oregon, 2009
- B.A., Anthropology, California State University at Sonoma, 2002

**AWARDS**

- Graduate Fellowship, 2007-2008
- California State University Research Grant, 2000

**TRAINING/CERTIFICATIONS**

- Conflict Resolution Training, University of Oregon School of Law, 2009

**PROFESSIONAL AFFILIATIONS**

- American Planning Association

**SAFETY/CERTIFICATIONS**

- American Red Cross First Aid & CPR Certification, current

**SUMMARY OF QUALIFICATIONS**

Ms. Scotten holds Masters degrees in Historic Preservation and Community and Regional Planning from the University of Oregon. Her cultural resource experience includes the documentation of Traditional Cultural Places, cultural landscapes, and historic buildings and structures. She has also conducted building assessments and consulted on adaptive reuse projects. She has participated in projects and studies in compliance with the California Environmental Quality Act, Section 106 of the National Historic Preservation Act, and the National Environmental Policy Act.

Ms. Scotten also has experience in community and strategic planning. She is familiar with Oregon and California land use law. She has designed and facilitated public workshops and facilitated vision and goal setting activities. Ms. Scotten has conducted outreach with Native American Tribes and community groups. She is familiar with survey writing, and has experience collecting and analyzing survey, demographic, economic, and financial data for planning documents.

Ms. Scotten's interests are in economic development, particularly related to tourism and recreation, and community revitalization. She is also interested in cultural resource policy and advocacy programs. For her thesis, *National Heritage Areas: Planning for and Managing Living Landscapes*, she conducted an evaluation of the National Heritage Area program. In addition, Ms. Scotten is interested in public involvement, collaboration, and community empowerment.

**RELEVANT EXPERIENCE**

**HISTORICAL PRESERVATION**

**Architectural Historian - Historic Building Assessment Portland Public Schools, Portland, Oregon**

ENTRIX was retained by Portland Public Schools to conduct an historic building assessment of 100 school facilities. Ms. Scotten surveyed buildings and prepared architectural descriptions, statements of significance, and evaluations. She also prepared sections of project historic context statement.

**Historian - Irvington Neighborhood Reconnaissance Level Survey Project, Portland, Oregon**

ENTRIX has been retained by the Irvington Community Association to manage the largest volunteer led architectural survey ever conducted in Oregon. Ms. Scotten supported volunteer efforts by conducting two orientation sessions to familiarize volunteers with architectural survey techniques, conducting a sample survey of 100 properties for use during the orientation sessions, conducting data checks on all information before its entry into the database, and completing a historic context, research design, and final report.

**PRESERVATION AND PLANNING**

**Planner/Project Manager—Community Planning Workshop, Eugene, Oregon**

Ms. Scotten prepared two parks master plans and accompanying capital improvement plans. She served as project manager on the Parks Master Plan for the City of Mount Angel, which involved the management of five staff interns and coordination with city staff and a parks advisory committee. In addition, she contributed to strategic plans for public agencies and nonprofit

organizations. Ms. Scotten's skills include the collection and analysis of survey, demographic, economic, and financial data. She has conducted community outreach, which included the design and facilitation of community workshops. She has also prepared and delivered presentations to city officials, boards, and councils.

***Preservation Intern – History, Architecture and Landscape Branch, Yosemite National Park***

Ms. Scotten assisted the Park's Historical Architect and Historical Landscape Architect in conducting and updating condition assessments for the Historic Structures Database. She also prepared sections of the Hetch Hetchy Cultural Landscape Inventory and National Historic Landmark Nomination of the Yosemite Valley Museum.

***Preservation Planner – Clark Historical Research Consultants, Inc., Santa Rosa, California***

Ms. Scotten prepared architectural surveys and evaluations in compliance with the California Environmental Quality Act, as well as nominations to the National Register of Historic Places. She worked collaboratively with developers, neighborhood associations, and Santa Rosa City staff in the adaptive-reuse of a large winery complex, which met the Secretary of the Interior's Standards for Rehabilitation.

***Tribal Outreach Coordinator/Assistant Ethnographer – Far Western Anthropological Research Group, Davis, California***

Ms. Scotten conducted tribal outreach for the Oroville Facilities Relicensing Project FERC Project No. 2100. She documented and evaluated Traditional Cultural Places (TCPs) through archival research and oral history interviewing. Ms. Scotten supervised and trained Native American interns in archival research, computer programming, TCP documentation, and interviewing techniques. She tracked project tasks and prepared project update presentations for project managers. In addition to the Oroville Facilities Project, she developed ethnographic and ethnohistoric contexts for federal projects and studies.

**CULTURAL RESOURCE REPORTS**

- 2007 *Hetch Hetchy Cultural Landscape Study*, report for Yosemite National Park.
- 2006 *A CEQA Review and Mitigation Plan for the Tenter Farmstead*, report prepared for Miller Associates, Petaluma.
- 2006 *National Register Nomination for the Armstrong House*, Sonoma, California, report prepared for preservation easement of the Ledson family estate.
- 2006 *Evaluation and Mitigation Plan for the Adaptive-Reuse of the Historic De Turk Winery*, report prepared for Odyssey Development Company, LLC.
- 2005 *A CEQA Review and Evaluation of Significance for the Properties within the Llano de Santa Rosa and Santa Rosa Creek Environmental Mitigation Banks*, report prepared for TRI-Development Co., LLC.
- 2004 *Class I Cultural Resources Overview and Research Design for the Alturas, Eagle Lake, and Surprise Resource Areas*, with Helen McCarthy et. al, contract report for the Bureau of Land Management.
- 2003 *Ethnographic and Ethnohistoric Inventory of KonKow Maidu Cultural Places*, with Helen McCarthy, contract report for the California Department of Water Resources.
- 2003 *Konkow Maidu Tribal Presence in the Lake Oroville Area: An Ethnographic and Ethnohistoric Inventory* [public report], with Helen McCarthy, contract report for the California Department of Water Resources.

**PLANNING REPORTS**

- 2009 *City of Mount Angle Parks Master Plan and Capital Improvement Plan*, The Community Planning Workshop.
- 2009 *St. Paul's Strategic Plan*, with Bethany Johnson, The Community Planning Workshop.
- 2009 *Nextstep Recycling Strategic Plan*, The Community Planning Workshop.
- 2008 *Lane County Fair Survey Results*, with Bethany Johnson, The Community Planning Workshop.

- 2008 *City of Monmouth Parks Master Plan and Capital Improvement Plan*, with Bob Parker (AICP), The Community Planning Workshop.
- 2008 *City of Eugene Diversity and Equity Strategic Plan*, with Bethany Johnson, The Community Planning Workshop.

**COMMUNITY PROJECTS**

- 2008 Woodsmen of the World (WOW) Hall Condition Assessment and Adaptive Reuse Project. Conducted condition assessment and developed preservation plan and list of character defining features for the adaptive reuse of the WOW Hall.
- 2007 Ebey's Landing Preservation Guide. Developed the Ebey's Landing National Historical Preserve Preservation Guide, report prepared for the National Park Service.
- 2005 Carrington Ranch Interpretive Plan, California Department of Parks and Recreation. Developed land use history of the Carrington Ranch for district Architectural Historian.

***ANDREWS HISTORY GROUP***

851 NE 56<sup>th</sup> Street, Seattle, WA 98105

206.524.1426

[gemilee@msn.com](mailto:gemilee@msn.com)

October 15, 2009

Tom Soppe, Associate Planner  
City of West Linn  
22500 Salamo Road  
West Linn, OR 97068

Dear Tom:

On behalf of my colleague, Julie Koler, and myself I am pleased to respond to your Request for Proposal for "Historic Preservation Inventory Work for the City of West Linn." We have developed the attached proposal, per your guidelines, and enclosed our resumes, along with that of a second sub-consultant, Todd Scott. Mr. Scott is a preservation architect and brings significant skills to the table which would be helpful in production of overlay zone guidelines for the historic paper mill area.

Julie and I very much enjoyed working with you and the Historic Resource Advisory Board (HRAB) on the Buck Street and Holly Grove projects this past year – in spite of Julie's health challenges which curtailed our ability to complete the work in a timely manner. Barring unforeseen circumstances - such as what occurred this year! - we believe we can complete the proposed projects in a timely and efficient manner. Particularly since our work over the last year served to familiarize us with the SHPO's Access database and survey requirements, along with the goals of the HRAB.

For administrative purposes, I would serve as project manager and subcontract with Julie and Todd. We will be able to complete the project in accord with your schedule and budget. I am delighted that West Linn has been funded for this project, and enthusiastic about the prospect of working with you to continue the good work of the HRAB. Thank you for your consideration.

Sincerely,

(by email)

Mildred T. Andrews, Ph.D.  
Principal

**PROPOSAL**  
**for**  
**HISTORIC PROPERTY INVENTORY WORK**  
**WEST LINN, OR**

Submitted to the City of West Linn  
By Andrews History Group  
October 15, 2009

**I. Statement of Work**

A. The proposed project has two parts:

1. Compiling and writing code language for the intended Paper Mill Area Conservation Overlay Zone to be adopted by the City for inclusion in the Community Development Code; and
2. Reconnaissance-level survey of remaining areas of the Buck Street area that were not included in the 2008-09 CLG grant cycle; and reconnaissance-level survey in other older areas of the Bolton and Sunset neighborhoods (number of properties to be surveyed contingent on funds available after completion of element number one above).

**II. Historic Resources/Related Historic Preservation Work in West Linn**

West Linn has a rich heritage with a landscape that has been traced to the Ice Age floods and with a human heritage that dates back thousands of years. In the 1840s, Robert Moore purchased 1,000 acres of land from the Wallamut Indians, and named his future town in honor of his friend, Dr. Lewis F. Linn. Within a few years, Moore had built four flour and lumber mills and related workers' housing along the river. Today, the town has numerous resources that honor its past, including the historic McLean House and park, now owned by the City and managed by the Friends of McLean House. The house, along with several other resources in and near the City, has been listed on the National Register of Historic Resources. One of them is the historic Willamette Falls Locks, which opened in 1873, and is the oldest continuously operating multiple-lift locks in the nation.

The City has completed an impressive number of preservation projects in the last few years, including, but not limited to, listing the Willamette District on the National Register of Historic Places, development of draft conservation overlay zone language for the Holly Grove neighborhood, and survey work in the Buck Street area. With this Request for Proposals, the City anticipates another overlay zone in the historic paper mill area, as well as additional survey and inventory work in the Bolton and Sunset neighborhoods.

West Linn and Clackamas County have abundant local resources for completing the subject projects. Clackamas County History and other records are posted on the web site of the Oregon Historical County Records Guide in the State Archives. Area libraries, museums, universities, and heritage organizations have a wealth of information related to historic preservation. These and other sources will be consulted by the project team.

### **III. Project Tasks and Deliverables**

#### *A. Paper Mill Conservation Overlay (December 2009 – May 2010)*

The consultants will compile applicable state and local laws concerning historic overlay zones as needed to build upon those collected in the Holly Grove project. These will be evaluated for application to the paper mill area, as will the draft Holly Grove overlay zone language. Draft language for the paper mill overlay zone will be prepared and submitted to the City and Board for review. Pending staff and Board review the draft will be revised and finalized for Council consideration. The consultants will be available to attend all formal review meetings.

#### *B. Bolton and Sunset Neighborhoods Reconnaissance Survey (January 2010 – May 2010)*

The consultants will complete a reconnaissance level survey of as much of the Bolton and Sunset neighborhoods as possible to document historic buildings, structures, and sites built before 1960. Tasks/products to include:

- Selection of survey boundaries
- Research design
- List of all resources identified in the windshield survey
- Field map showing resources that were considered for inclusion in the survey with a notation for each indicating whether it was included or excluded and the reasons for doing so noted. Sites to be marked and numbered.
- Photographic documentation of each resource, per Oregon State Historic Preservation Office requirements
- Data entry into Oregon Historic Sites Database
- Survey report per Oregon State Historic Preservation Office requirements to be submitted in both digital and hard copy formats
- Prioritized list of properties that appear to meet eligibility criteria for the National Register and for local landmark designation
- Presentation of project results at public meeting

At a minimum the following sources will be consulted:

- City of West Linn Comprehensive Plan, re. Historic Landmarks, Historic Districts,

- City of West Linn, Planning Division. Historic Building Inventory (by Catherine Crook, 8/26/05)
- Oregon State Historic Preservation Office, Parks and Recreation Department, *Guidelines for Conducting Historic Resource Surveys in Oregon* (rev. Feb 2008)

The project team plans to spend six eight-hour days, utilizing research notes, a field map, the State’s Historic Property Inventory Database (on a laptop computer), and a digital camera to conduct the reconnaissance survey. Information gathered both in the field and from other sources and entered in the State’s database will include:

- Parcel number, street address, and legal description (per requirements of State database) for each inventoried property
- Architectural description, minimal with several fields of information (style, materials, etc.) based on observations from the street (per SHPO requirements for database entry)
- Historical narrative, very minimal, including original use, historic name and current name of resource, if known (per SHPO requirements for database entry)
- Preliminary evaluation of NR eligibility based primarily on age, integrity, and either architectural significance or potential, but as yet undetermined, historical significance
- Exterior photos. Typically two angled photos of the façade, taken from each front corner, including outbuildings in the background when possible
- Count of contributing and non-contributing outbuildings with listing of only major resources in database Comments field.

#### IV. Schedule and Methodology

The project timeline is flexible and will be finalized in consultation with City staff. All tasks will be conducted by Mildred Andrews, Julie Koler and Todd Scott. The following is a tentative schedule:

<p><b>Dec. 2009 – Jan. 2010</b></p>	<ul style="list-style-type: none"> <li>• Project planning meeting and orientation with City staff</li> <li>• Tour Bolton and Sunset neighborhoods</li> <li>• Identify and review existing literature including City laws and regulations</li> <li>• Review existing historic preservation documentation, including West Linn-area surveys, inventories, and nominations</li> <li>• Identify boundaries of the survey area</li> <li>• Formulate research plan for reconnaissance level survey Tour paper mill area</li> <li>• Meet with HRAB and City of West Linn staff to present initial findings/ideas for their review and input</li> </ul>
---	---



<b>Jan. - Mar. 2010</b>	<ul style="list-style-type: none"> <li>Utilizing SHPO's Reconnaissance Level Survey Research Design Standards, conduct windshield survey, photograph properties, and enter the data into SHPO's Access Database</li> <li>Review and refine database entries</li> <li>Continue Code research and analysis</li> </ul>
<b>Feb. - April 2010</b>	<ul style="list-style-type: none"> <li>Complete reconnaissance level survey, and preliminary evaluation of properties for National Register and local register eligibility</li> <li>Complete mapping and final report for reconnaissance level survey</li> <li>Draft language for code for an intended Paper Mill Area conservation overlay</li> <li>Meet with staff for review of survey and recommendations, and of preliminary draft of proposed City of West Linn code</li> </ul>
<b>June 2010</b>	<ul style="list-style-type: none"> <li>Present final report to West Linn HRAB for review</li> <li>Meet with property owners in neighborhood survey areas to present and discuss recommendations, regarding National Register and local designation eligibility</li> </ul>

## V. Estimated Hours and Budget

### 1. Conservation Overlay Code Development

➤ Code research & analysis:	18 hrs.	\$1350
➤ Draft language:	75 hrs.	\$5625
➤ Meetings (6):	25 hrs.	\$1875
➤ Finalize language:	15 hrs.	\$1125

***Phase 1 Estimated Cost: \$9975***

### 2. Reconnaissance-level Survey

➤ Review of existing lit:	12 hrs.	\$900
➤ Field Survey:	70 hrs.	\$5250
➤ Property Evaluation:	30 hrs.	\$2250
➤ Database Entry:	50 hrs.	\$3750
➤ Mapping:	7 hrs.	\$525
➤ Final Report:	20 hrs.	\$1500
➤ Property Owner Mtg.:	6 hrs.	\$450

***Phase 2 Estimated Costs: \$14625***

3. <i>Mileage Estimate:</i>	
Six round trips @ 374 miles (Seattle/West Linn) plus 100 miles in West Linn equals 4625 miles at IRS rate of <b>55</b> cents per mile	\$1289
4. <i>Per Diem Estimate:</i>	
9 nights @ \$103 per night and 19 days at \$45 per day	\$1786
5. <i>Miscellaneous Estimate:</i>	
Copies, printing, postage	\$325
 <b>TOTAL ESTIMATED COST:</b>	 <b>\$28,000</b>

**I. Proposing Firm and Sub-contractor:**

*Andrews History Group*  
851 N.E. 56<sup>th</sup> Street  
Seattle, WA 98105  
206.524.1426 (phone)  
206.524.1426 (fax)  
gemilee@msn.com.

Project Manager: Mildred T. Andrews, Ph.D.  
Ms. Andrews meets the Secretary of the Interior's Professional Standards. She has more than ten years experience in the field of historic preservation with successful projects ranging from surveys and inventories, to preparation of local landmark and National Register of Historic Places nomination forms to applications for county and federal historic preservation tax credits.  
*Estimated total hours on project: 109*

Subcontractor: Julie M. Koler, Koler & Associates  
Ms. Koler meets the Secretary of the Interior's Professional Standards with over 25 years of experience managing and conducting a wide range of historic preservation programs and projects in Washington and Oregon. Since 1989, she has managed the King County Historic Preservation Program, including programs in 16 of the county's suburban cities. Restoring and enhancing historic main streets has been the primary focus of her work in the cities, including identification, evaluation and enhancement of significant historic buildings,

development of education programs/materials, financial incentives for property/business owners to improve their facades, workshops, and charettes.  
*Estimated total hours on project: 109*

Subcontractor: Todd Scott, AIA, Preservation Architect  
Mr. Scott meets the Secretary of the Interior's Professional Standards and has over 12 years of experience conducting design review of historic properties and related activities. He has worked for the King County Historic Preservation as the staff architect for two years. Prior to that he worked as the Community Development Director for Astoria, Oregon where he supervised numerous preservation projects, and as the Oklahoma State Main Street Architect and the Oklahoma City Historic Preservation Officer. *Estimated total hours on project: 110*

## **II. Relevant Background and Experience of Team:**

Mildred Andrews has worked in the field of historic preservation for more than 15 years on projects including surveys and inventories, local and National Register nominations, applications for historic preservation tax credits and development of preservation plans. Examples that relate closely to the proposed project are her survey and inventory of downtown Enumclaw, her historic context statement of Asian-American legacies in King County's White River Valley, and her published history of the Pioneer Square Historic District (*Pioneer Square: Seattle's Oldest Neighborhood*, Seattle: University of Washington Press, 2006).

Julie M. Koler has been a historic preservationist for over 25 years with experience ranging from surveys and inventories to development and implementation of public information and advocacy strategies, and from local ordinance development to preparation of National Register nominations. For most of the 1980s, she was based in Oregon and conducted numerous historic preservation projects, including a historic survey in West Linn (1982). Since 1989, Koler has managed King County's Historic Preservation Program. Because Koler's work is largely administrative in nature, she has maintained a small consulting practice on the side so that she can continue to do the research, writing, and property owner consultation that she enjoys the most.

J. Todd Scott has been a historic preservationist and architect for more than 12 years with experience ranging from review of significant preservation projects to mounting grass roots campaigns to prevent demolition of significant historic buildings. His most significant work has been advocating for small residential and commercial districts in their quest to use historic preservation as a revitalization tool. He has worked with dozens of districts in Oklahoma, Oregon, Wisconsin, Colorado, Vermont, and Washington to document, preserve, and adaptively re-use their historic resources. He most recently presented at the National Main Streets Conference in Chicago. Scott has worked with Andrews

and Koler on previous projects in Oregon and Washington and continues to provide preservation consulting services on an occasional basis.

As a consultant for the King County Historic Preservation Program, Andrews has worked with Koler on several projects, including the above-noted survey and inventory of downtown Enumclaw, and the historic context statement documenting sites associated with Asian-Americans in the White River Valley. Documentation was consistent with the “Historic Property Inventory Guide and Database User Manual” and the “Washington State Standards for Cultural Resource Reporting,” published by the Department of Archaeology and Historic Preservation.

Since 2006, Andrews and Koler have worked on a variety of projects as a historic preservation team under the aegis of the Andrews History Group. They have successfully completed a nomination of the Mukilteo Light Station to the National Register of Historic Places, and a reconnaissance survey of the Old Town Historic District in the City of Anacortes, which was funded in part by the Washington State Department of Archaeology and Historic Preservation, and which involved data entry into the State’s database. They have also completed an intensive level survey of the City of Gig Harbor and a preservation plan, including development of proposed code, for the City of Everett.

In these and other projects, community involvement has always been important in both research and subsequent phases. The Enumclaw project was planned to spearhead the understanding and preservation of the city’s historic downtown core. Andrews and Koler met with the mayor, the city council, city planners, leaders of local public art and history groups, the superintendent of public schools, the editor of the local newspaper, and other interested citizens to present their findings and answer questions. Subsequently, Andrews nominated a downtown building to the National Register of Historic Places, and worked with a public artist and an educator to develop and implement a high school curriculum unit, where drafting students created designs for historically significant improvements to downtown properties. When the students presented their projects to the City Council, community member packed the chambers and public television broadcasted the event.

In the White River Valley, the public learned about and supported preservation of one of the nation’s few remaining historic Japanese bathhouses, which is now listed on the National Register. The White River Valley context statement provided background for several other projects, including Andrews’ centennial history of the Auburn School District, and projects by local museums to collect oral histories, gather historic photographs, mount exhibitions, and hold public lectures to interpret and make known the contributions of local Asian Americans.

In 2008-2009, the Andrews and Koler, under the aegis of the Andrews History Group, successfully completed a project entitled "Historic Preservation Inventory Work for the City of West Linn." Products included: a reconnaissance survey of the Buck Street Neighborhood with a survey report per Oregon State Historic Preservation Office requirements and survey data entered into the Oregon Historic Sites Database; and preparation of historic overlay design guidelines for the Holly Grove District of West Linn, Oregon. The latter involved staff and Board review with requisite revisions and finalization for City Council consideration.

### III. References:

Jan Meston, Planner, City of Everett, WA	425.257.7164
Leonard Garfield, Executive Director, Museum of History and Industry, Seattle, WA	206.324.1685, ext. 32
Karen Marshall, Former Chair, Anacortes Preservation Board City of Anacortes, WA	360.241.2340

## Résumé

### MILDRED TANNER ANDREWS

3035 Fourteenth Avenue West, #6

Seattle, Washington 98119

Phone: 206.524.1426      gemilee@msn.com

#### PROFESSIONAL EXPERIENCE

**Mildred Andrews, Ph.D., is a Northwest social historian and historic preservationist with more than 25 years experience in research, writing, publishing, curating exhibitions, oral history projects, education, and cultural resource management. Her award-winning work evokes a strong sense of place, bringing to light stories of people, organizations, communities, buildings, and landscapes in the context of the growth and development of the region.**

*1982 – Present      Andrews History Group, Seattle Washington  
History and Historic Preservation Services*

Representative products include: published books and articles; curriculum guides; exhibitions of historic photographs; oral history collections; cultural resource management, including surveys and inventories of historic resources, nominations of properties to the National Register of Historic Places and to state and local landmark registers, and applications for local and federal historic preservation tax credits. Services have included: planning and managing projects; working with boards and stakeholders; supervising paid staff and volunteers; grant writing and budget management; public speaking; and more

#### SELECTED PROJECTS

*2008 – Present      City of Gig Harbor  
Position: Historic Preservation Consultant*

Partner with Julie M. Koler to conduct a historic resource survey of of the Downtown/Millville District and of other historic resources in the city. Write context statement. Submit reports to the City of Gig Harbor and to the Washington State Department of

Archaeology and Historic Preservation.

*2007 – 2008      Mukilteo Historical Society  
Position: Historic Preservation Consultant*

Research and write updated nomination of the Mukilteo Light Station to the National Register of Historic Places.

2007 – 2007

*City of Anacortes*

*Position: Historic Preservation Consultant*

Partner with Julie M. Koler to conduct a reconnaissance level survey of 100 buildings and sites 50 years of age and older in the “Old Town” Neighborhood; report to Anacortes City Council, and submit survey report to Washington State Department of Archaeology and Historic Preservation.

2005 – Present

*Clark Design Group, PLLC*

*Position: Historic Preservation Specialist*

Research the histories of select downtown Seattle buildings to prepare local, state and federal landmark nominations and applications for historic preservation tax credits.

2005-2006

*State of Washington, Washington State Historical Society,  
Women’s History Consortium*

*Position: Oral Historian*

Conduct oral history project with well-researched, high quality recordings in accordance with the Oral History Association Principles and Standards. Interview 25 Washington women, half of them pro-ERA (Equal Rights Amendment) and half anti-ERA, who were involved in the 1977 Ellensburg and Houston International Women’s Year Conferences; edit transcriptions (ca. 450 pages). Write project introduction for web site.

2001 – Present

*Goodman Real Estate, Inc.*

*Position: Historic Preservation Specialist*

Research and evaluate select downtown Seattle buildings to determine their potential for inclusion in the city landmarks register, Statewide Inventory of Historic Sites, and National Register of Historic Places. Write landmark nominations. Prepare applications for local and federal historic preservation tax credits. Research and make recommendations for other tax incentives, including low income housing credits and Section 106 of the National Register of Historic Places.

1998 – 2005

*Pioneer Square Community Association*

*Position: History Project Director*

Served as editor and lead historian for 200-page book, published by University of Washington Press; curated companion photographic exhibits; organized and participated in related lecture/discussion series; raised funds and managed grants; trained volunteers.

2003 – 2005

*4Culture King County Cultural Development Authority  
in partnership with Seattle Public Schools Salmon Bay  
Alternative School*

*Position: Women’s History Curriculum Consultant*

Developed and field-tested curriculum guide for King County Women’s History.

1998 – 2002

*HistoryLink*

*Position: Women's History Editor/Author*

Wrote some 40 essays for [historylink.org](http://historylink.org), a comprehensive Website for Washington State history. Served on editorial team.

1995 – 2000 *King County Historic Preservation Program*

*Position: Cultural Resource Management Consultant*

Conducted research and worked with volunteers to produce historic surveys, inventories, a context statement documenting Asian-American legacies in the White River Valley, and landmark nominations, including the valley's sole remaining Japanese bathhouse. Wrote Proposal to Establish King County Heritage Corridor Program, accepted by Department of Transportation, Roads Services Division.

1994 – 1999 *REM Photographic Heritage Team*

*Position: Historian*

Collaborated with historic photography professional and museologist to conduct workshops on interpretation, use, and preservation of historic photographs. Organized "photo shoots," where people brought their images for copying to help local museums build their collections. Trained volunteers to record related data and stories.

1990 - 1998 *Gemil Press*

*Position: Partner*

Published and designed regional history books. Produced touring historic photographic exhibitions on portable display system.

1995 – 1999 *University of Washington*

*Position: Adjunct Faculty*

Taught classes in the History and Women Studies Departments and in the Extension school's non-credit Family History Certificate Program.

1995 – 1998 *Mutual of Enumclaw Insurance Company*

*Position: Historian*

Researched and wrote centennial history book.

1997 – 1998 *City of Enumclaw and King County Landmarks Commission*

*Position: Cultural Resource Management Consultant*

Produced context statement, survey and inventory of historic downtown business district. Project included presentations to City Council and meetings with public school classes and community groups.

1986 – 1995 *Washington State Historical Society, Heritage Resource Center*



*Position: Conference Coordinator/Lecturer*

Coordinated annual Northwest women's history conferences. Conducted workshops on oral history and on preservation and use of historic photographs.

1994 – 1995                      *Auburn School District*  
*Position: Historian*

Researched and wrote centennial history book; conducted oral history training for high school students, who volunteered to serve as research assistants.

1993                                      *Whatcom Museum of History and Art, Bellingham*  
*Position: Guest Curator*

Curated main gallery exhibit, Votes for Women: the Northwest Crusade.

1992                                      *Eastern Washington University, Cheney*  
*Position: Exhibit Curator*

Curated of touring women's history exhibit, Crusaders for Better Lives.

1990 – 1992                      *Washington Commission for the Humanities*  
*Position: Inquiring Mind Scholar*

Traveled throughout the state to give presentations on Washington women's history.

1987 – 1989                      *Junior League of Tacoma*  
*Position: Historian*

Researched and wrote a book about legacies of Washington women; developed companion curriculum guide and touring photographic exhibition. Project was co-sponsored by the Washington State Centennial Commission. Worked with volunteer planners, editors, grant writers and publicists.

1985 – 1988                      *Plymouth Congregational Church, Seattle*  
*Position: Historian*

Researched and wrote 120th anniversary history book, 1985-88.

1980 – 1984                      *YWCA of Seattle/King County*  
*Position: Historian*

Organized archives and researched and wrote book about legacies of Seattle women's voluntary organizations; served on women's leadership conference planning committee.

## **EDUCATION**

University of Washington, M.A., Ph.D., German and Comparative Literature  
Washington State University, B.A., Foreign Languages and Education  
Bonn University, Germany, DAAD Exchange Fellowship, Certificates

## **PUBLISHED BOOKS AND AWARDS**

*Pioneer Square: Seattle's Oldest Neighborhood*, Editor. Seattle: University of Washington Press, 2005 (2<sup>nd</sup> edition, 2008). 256 pages, 125 illustrations,

- bibliography, index.
- Judge J.T. Ronald: Reflections Along the Wayside of Life*, Editor. City of Shoreline: Shoreline Historical Museum, 2003. 253 pages, index.
- A Century of Service: Mutual of Enumclaw Insurance Company*. Enumclaw: MEIC, 1998. 205 pages, photographs, bibliography, index.
- Auburn School District: the First 100 Years*. Auburn: ASD Centennial Committee, 1996. 100 pages, photographs, bibliography, index.
- Woman's Place: a Guide to Seattle and King County History*. Seattle: Gemil Press, 1994. 344 pages, maps, photographs, index. Recipient of 1994 award for best publication from Association of King County Historical Organizations.
- Washington Women as Path Breakers*. Dubuque, Iowa: Kendall/Hunt; Junior League of Tacoma, 1989. 176 pages, photographs, bibliography, index, and companion curriculum guide. An official State Centennial project.
- Seeking to Serve: the Legacy of Seattle's Plymouth Congregational Church*. Dubuque, Iowa: Kendall/Hunt; Seattle's Plymouth Congregational Church, 1988. 240 pages, photographs, bibliography, index. Recipient of 1988 Fagley Award from the Congregational/Christian Historical Society
- Seattle Women: a Legacy of Community Development, 1851-1920*. Seattle: YWCA of Seattle/King County, 1984. 66 pages, photographs, index.
- with B. J. Krivanek, *Pioneer Square: Public Arts + Legends Program*. Seattle: Seattle Arts Commission, 2001.

JULIE M.KOLER  
Cultural Resources Specialist  
719 Federal Avenue E  
Seattle, Washington 98102  
206.999.2383  
julie.koler@kingcounty.gov

## PROFESSIONAL EXPERIENCE

Ms. Koler brings over 25 years of experience to managing and conducting a full range of cultural resources programs in the Western United States. In particular, she has planned and supervised projects implementing requirements of Section 106 of the National Historic Preservation Act in conjunction with NEPA/SEPA, FHWA/DOT 4(f), and COE 404 permitting processes. She brings a wealth of experience in conducting large programs for site identification, impact assessment, and impact mitigation under state, federal and local laws and regulations.

*1/89 - Present King County Office of Business Relations & Economic Development  
Historic Preservation Program, Seattle, Washington.  
Position: Historic Preservation Officer*

Responsible for management of countywide Historic Preservation Program. Coordinate nine-member volunteer Landmarks Commission and manage staff of three professionals; prepare budget requests; coordinate County's historic preservation efforts with other governmental agencies, departments; oversee administration of landmark restoration loan program, two special tax programs for landmark properties, and countywide planning efforts for cultural resources, including review of NEPA/SEPA, FHWA/DOT 4(f), and a variety of related local preservation regulatory laws/processes.

*1/89-Present Koler & Associates, Seattle, Washington  
Cultural Resources Specialist*

Conduct research, documentation and analysis for wide array of historic preservation projects funded through public and private sources. Representative projects include survey and inventory of historic resources in communities throughout Oregon and Washington, including identification, research and evaluation of properties for inclusion in local landmark registers, Statewide Inventory of Historic Sites, and National Register of Historic Places; implementation of requirements of Section 106 of the National Historic Preservation Act in conjunction with NEPA/SEPA, FHWA/DOT 4(f), and COE 404 permitting processes.

*4/04 – 6/06 Larson Anthropological and Archaeological Services, Ltd.*

Julie M. Koler  
Resume  
Page Two

*Position: Architectural Historian*

Conduct research, documentation and evaluation of historic properties in fulfillment of requirements of Section 106 of the National Historic Preservation Act in conjunction with NEPA/SEPA, FHWA/DOT 4(f), and COE 404 permitting processes.

*4/85-10/88 Koler/Morrison Planning Consultants, Portland, OR  
Partner*

Worked with local jurisdictions throughout Oregon and Washington to develop and implement historic preservation programs, including technical assistance to local landmark commissions and other special interest groups; advice and assistance to property owners regarding tax act information and procedures; production of complex written material including local preservation ordinances and related zoning and building codes; development and coordination of workshops on current issues in cultural resource management for professionals in field.

*4/83-3/85 U.S. Fish and Wildlife Service, Portland, Oregon  
Position: Cultural Resource Specialist*

Provided technical assistance on cultural resource matters to Federal wildlife refuge staff located in the states of Oregon, California, Nevada, Idaho, Washington, and Hawaii. Prepared and reviewed nominations to the National Register of Historic Places. Assisted in maintaining the inventory of cultural resources properties on all refuges in the Northwest Region requiring protection or maintenance. Prepared formal determinations of eligibility for historic properties, reviewed environmental impact statements and related planning documents concerning cultural resources for adequacy. Monitored agency compliance with Section 106 review process.

*10/81-2/83 City of Portland, Bureau of Planning, Portland, Oregon  
Position: Research Assistant*

Assisted in citywide inventory of historic resources. Researched, photographed and evaluated properties for inclusion in the City of Portland Historic Resource Inventory. Participated in development of standardized vocabulary of architectural terms and styles.

**EDUCATION**

M.A., Public History, 1982, Portland State University, Portland, Oregon (coursework completed).

B.A., History-American Studies (with emphasis in architectural history), 1977, Whitman College, Walla Walla, Washington.



## **J. Todd Scott - Resume**

101 W Olympic Pl., #601, Seattle, WA 98119  
206.861.5422(c) 206.296.8636(w)  
[jtoddscott@hotmail.com](mailto:jtoddscott@hotmail.com)



### **Education:**

M. Arch. (Historic Preservation, Urban Design), University of Oklahoma, 1993  
Graduate, National Trust's Preservation Leadership Training and various PLT/Advanced Trainings  
Licensed Architect, Oklahoma No. 4189

### **Experience:**

#### **Preservation Architect, King County Historic Preservation Program, April 2007 – present**

Administer county's design review process for landmarks in unincorporated areas and 17 incorporated cities within the county. Provide technical assistance to property owners and community leaders.

#### **Community Development Director, City of Astoria, July 2003 – April 2007**

Administered city's building, planning, and historic preservation departments. Completed a 100+ acre waterfront revitalization plan, prepared designation as one of America's Dozen Distinctive Destinations, and established a new National Register district.

#### **Architect, Oklahoma Main Street Program, December 1998 – July 2003**

Provided design services to 41 Main Street Communities in Oklahoma. Provided technical assistance to property owners and local design boards for adaptive re-use of historic buildings and infill development. Worked with city officials regarding preservation ordinances and public improvement projects.

#### **Historic Preservation Officer, City of Oklahoma City, February 1996 – December 1998**

Staffed Historical Preservation Commission and 3 other design review commissions. Worked directly with community leaders, preservation officials, city officials, and property owners to develop rehab and infill solutions and streamline CA process for commissioners, staff, and applicants.

#### **President, Association of Oregon Renewal Authorities, 2005 – 2007**

Administered this League of Oregon Cities affiliated organization while preparing annual meetings/conferences and assisting LOC staff with legislative proposals and hearings.

#### **Presenter, National Preservation Conference, 2003 & 2006, National Main Streets Conference, 2009**

Participated in panel discussions on local advocacy and mid-century modern preservation, and led field sessions on small town preservation issues.

#### **Presenter, Oklahoma Sustainability Conference and Statewide Preservation Conferences, 1995-2002**

Presented information on the sustainability principles of historic preservation, adaptive reuse of older structures, and various local preservation advocacy efforts.

#### **Volunteer Member, Oklahoma City Comprehensive Plan Update Citizens Committee, 1999 – 2000**

Served on the Historic Preservation Component and the Urban Growth Component Committees for a plan adopted by City Council.

#### **Member, Sieber Holdings LLC**

Rehabilitated the 1928 Sieber Apartment Hotel, Oklahoma City, as market rate apartments.

### **Other Activities:**

**Member, American Institute of Architects**

**Member, Newport, Vermont R/UDAT, March 2009; Petersburg, Virginia R/UDAT, March 2007**

**Board Member, Clatsop County Historical Society, 2005 – present**

**Board Member, Preservation Action, 2002-2006**

**Secretary-Treasurer, Oklahoma City Foundation for Architecture, 1999 – 2003**

**Board Member, Paseo CDC, Oklahoma City, 1995-2001**

References available on request.