



Planning Commission Hearing

ATHEY CREEK MIDDLE SCHOOL AT DOLLAR STREET

July 7, 2021



A RESPONSIVE DESIGN

Site Layout

Noise

Building Size and Massing

Tree Removal

Light

Connectivity

Traffic





FIELDS BRIDGE PARK

DOLLAR STREET

TUALATIN RIVER

TUALATIN FALLS DRIVE

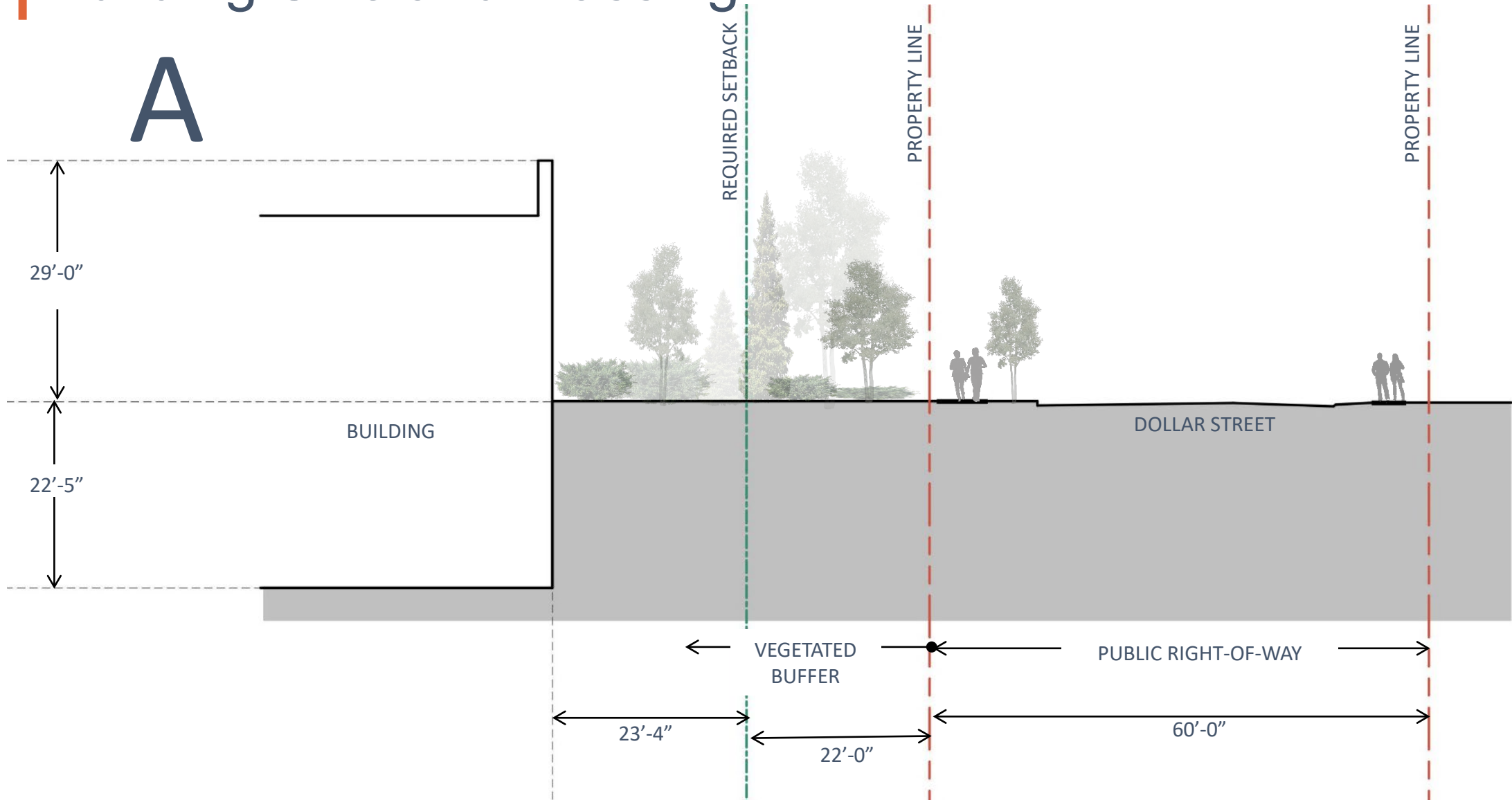
A

B

C

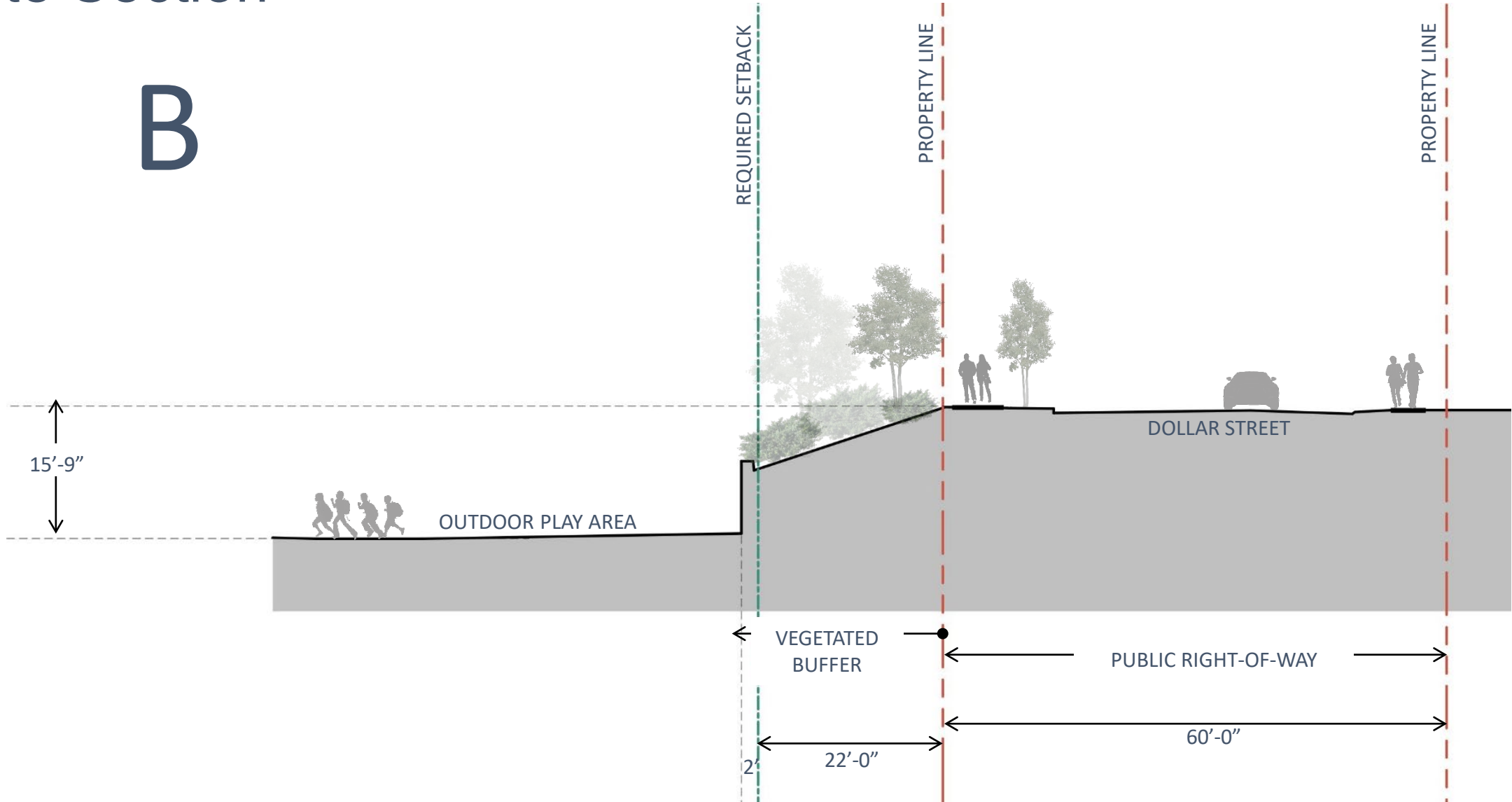


Building Size and Massing



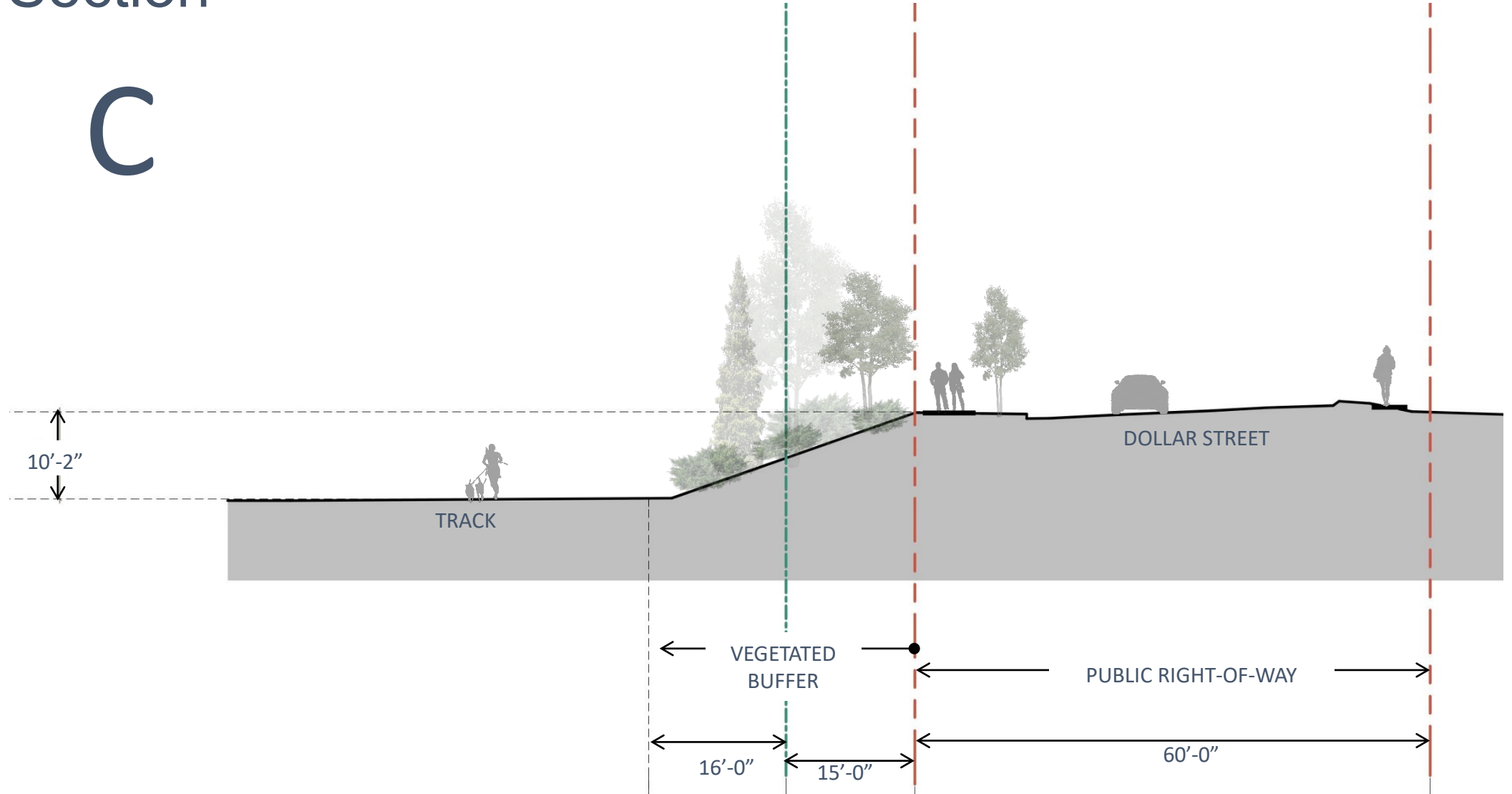
Site Section

B



Site Section

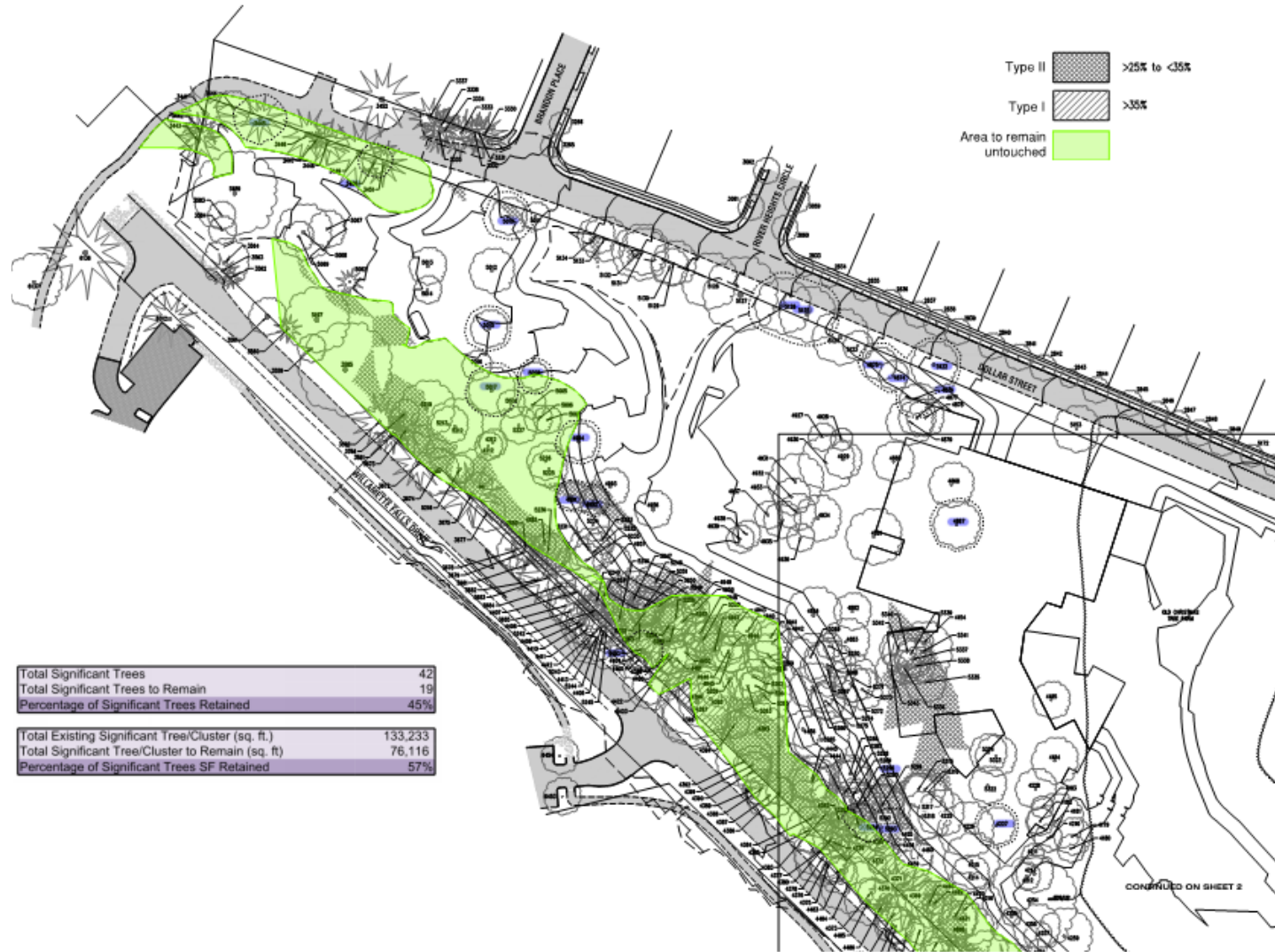
C



Building Size and Massing



Tree Preservation



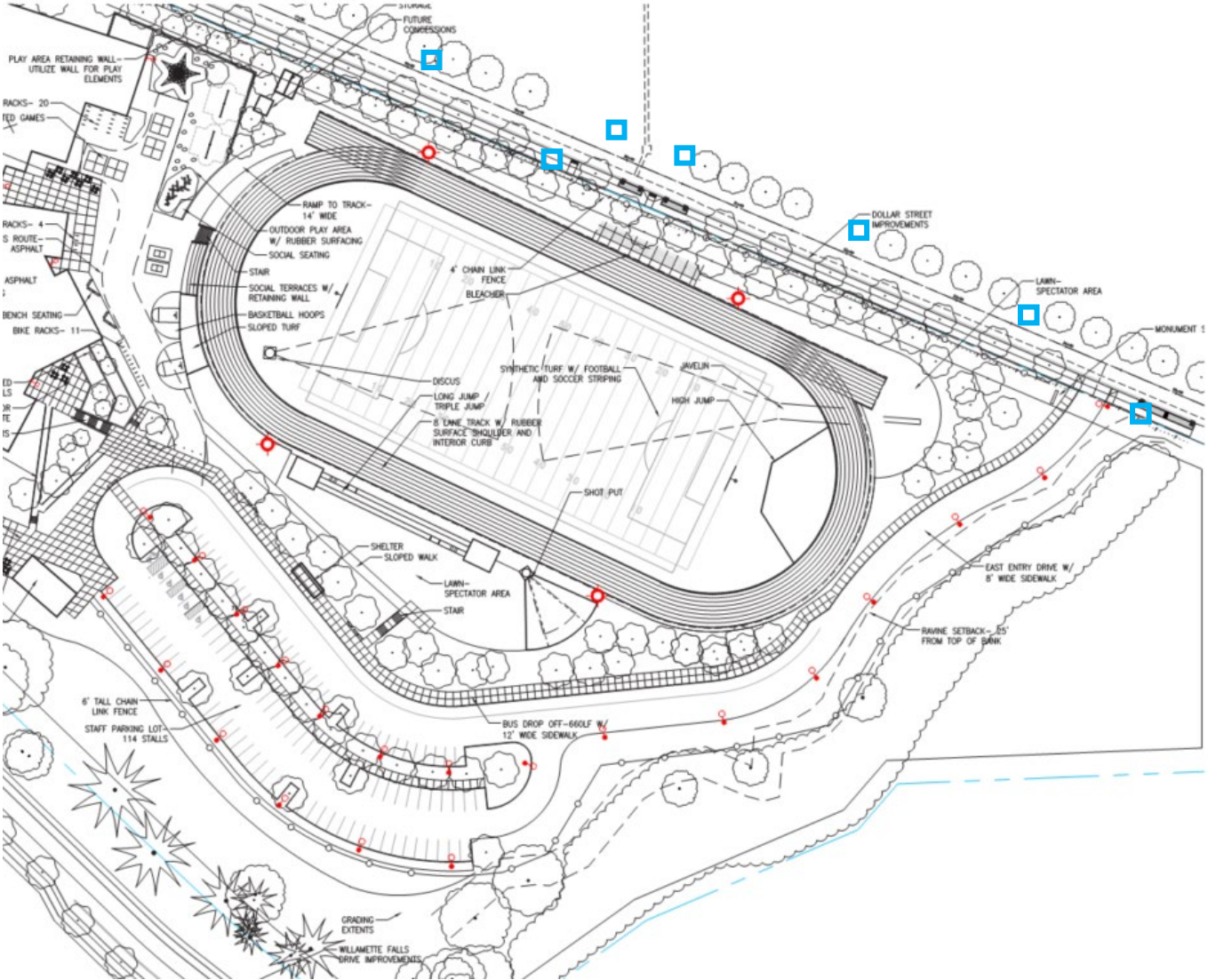
Tree Preservation



Site Lighting



Wood Middle School



Parking Distance Variance

	Stalls
Required Parking	186
Provided Parking	186
Parking Requiring Variance	3



Wall Sign Size Variance





FIELDS BRIDGE PARK

DOLLAR STREET

TUALATIN RIVER

TUALATIN FALLS DRIVE



ATHEY CREEK MIDDLE SCHOOL RELOCATION

TRANSPORTATION EVALUATION

SCOTT MANSUR, P.E., PTOE

DKS ASSOCIATES

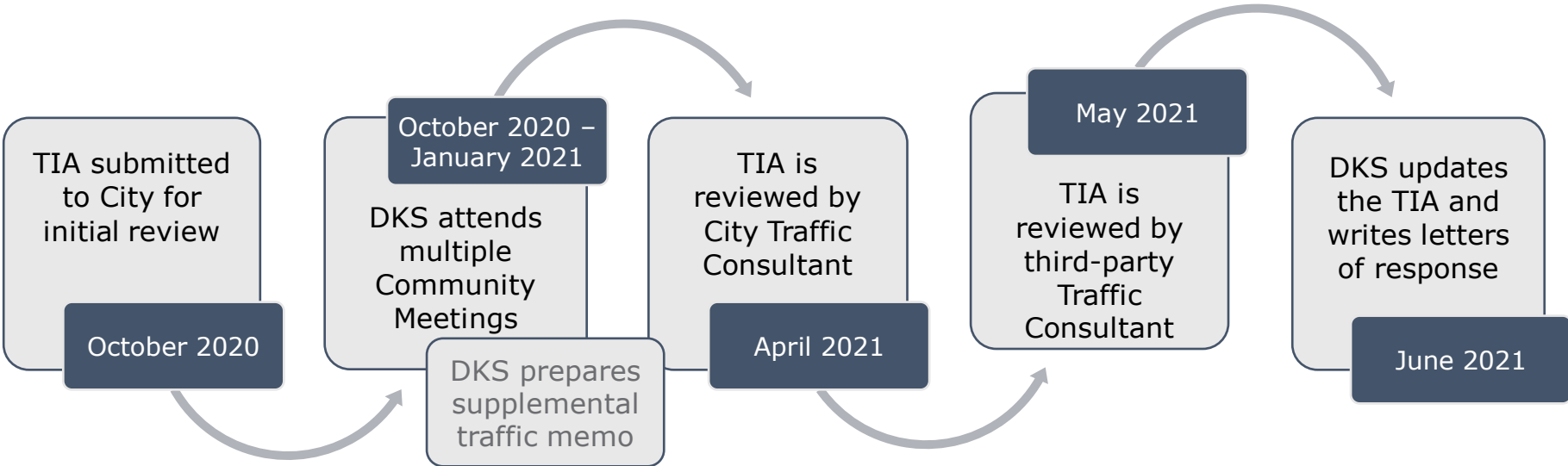
smm@dksassociates.com

503.391.8773

TRAFFIC IMPACT ANALYSIS (TIA)

- The analysis followed **City of West Linn guidelines** for TIAs.
- Traffic Count Data was collected in **May 2019** (prior to COVID-19 impacts)
- The analysis assumes **full build** of the Middle School (850 students).
- Trip Generation was based on **driveway counts** at the existing middle school and **future student enrollment data**.
- **School District and City of West Linn coordinated** on modal split and trip distribution assumptions.

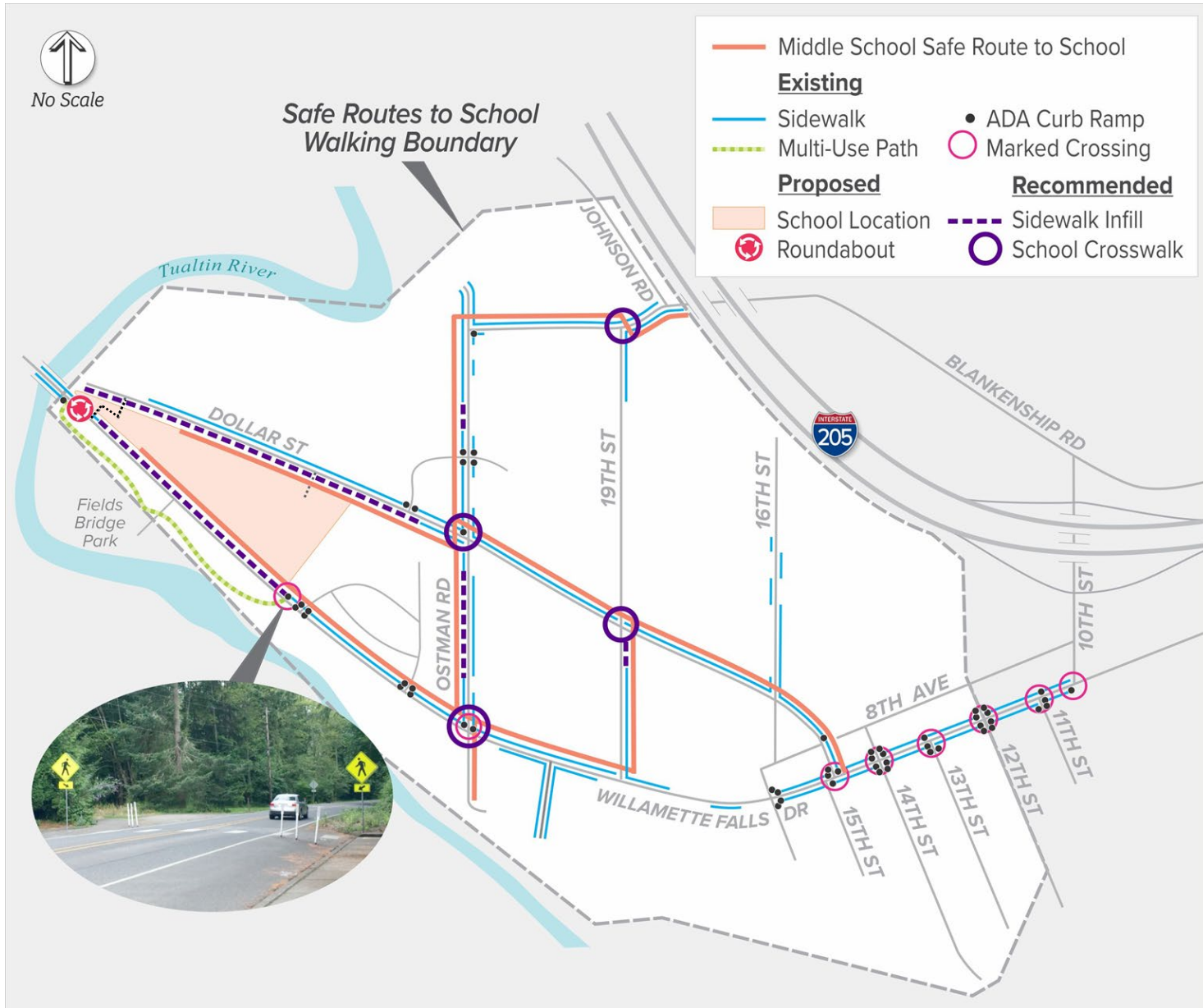
TRAFFIC IMPACT ANALYSIS (TIA) OUTREACH TIMELINE



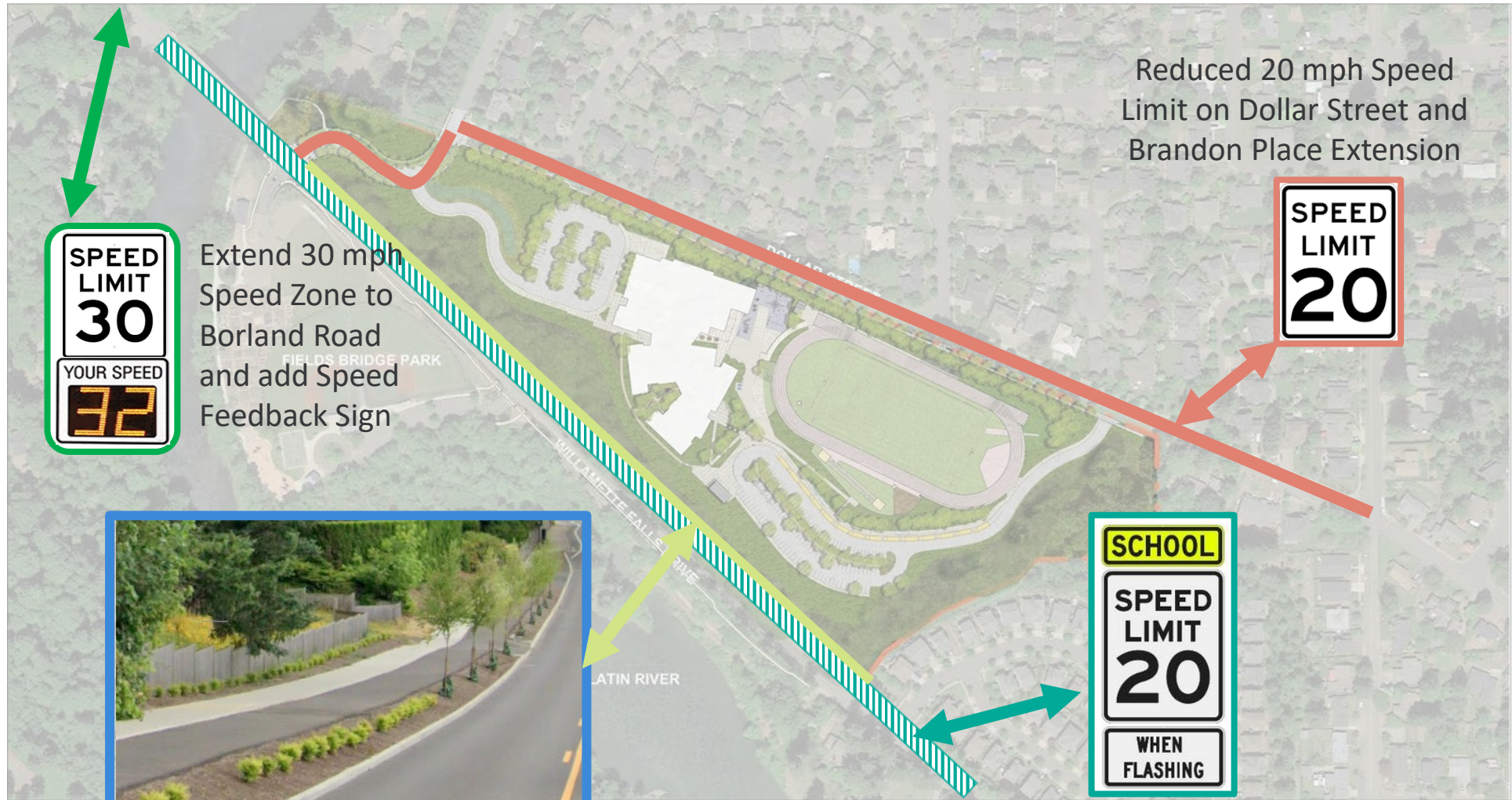
TIA RECOMMENDATIONS

- **Frontage Improvements** (sidewalk, separated bicycle facility, lighting, on-street parking)
- **Safe Routes to School** (sidewalk infill, ADA curb ramps, marked school crossings, enhanced pedestrian treatments)
- **New roundabout** at the intersection of Willamette Falls Drive and Brandon Place extension
- **20-mph School Speed Zone** on Willamette Falls Drive
- **Reduced Posted Speed Limit (20 mph)** on Brandon Place and Dollar Street
- **Maintain the all-way stop-control** at Willamette Falls Drive/Ostman Road to address safety issues, improve sight distance, and discourage I-205 diversion route. Brandon Place extension will provide an alternate access to Willamette Falls Drive and will help the intersection maintain LOS D operations with the addition of the school.

SAFE ROUTES TO SCHOOL



SAFETY IMPROVEMENTS



Separated Bicycle Facilities on Willamette Falls Drive

School Speed Zone (20 mph) on Willamette Falls Drive (from Tualatin River to Epperly Way)

ROUNDBABOUT SAFETY



- Reduces the risk of fatal and serious injury crashes by up to 80%
- Results in lower vehicle speeds, generally 15–20 mph



Short pedestrian crossing distances

THANK YOU

