



CITY OF  
**West  
Linn**

## Planning Commission - Public Hearing

PLN-19-02  
Update Storm Drainage Master Plan  
August 7, 2019



## Background Information

**Oregon Planning Program  
City Comprehensive Plans and Support Documents**



## Oregon Planning Program – Planning Background



In the July meeting, staff provided an overview of the Oregon Land Use System.

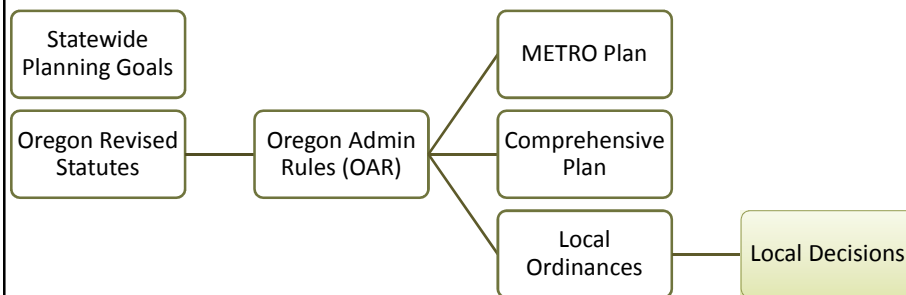


CITY OF  
**West  
Linn**

- ◆ **Oregon's Planning Program** History - Senate Bill 100
- ◆ Senate Bill 100: Created Land Conservation and Development Commission (LCDC) and Department of Land Conservation and Development (DLCD)
- ◆ Directed LCDC to develop statewide planning goals
- ◆ Required all cities and counties to adopt comprehensive plans
- ◆ Gave LCDC the authority to approve or reject comprehensive plans
- ◆ Required state agencies to comply with comprehensive plans

3

## Land Use Regulation Hierarchy



Local plans must be updated when ORS, OAR or METRO Plan amendments occur.

Planning Commission 08-07-2019

4

## Comprehensive Plan



- The City's acknowledged Comprehensive Plan (Plan) is a guiding land use document guiding policy makers for local government. The City has had a plan process since 1954. The first Comprehensive Plan was adopted in 1975.
- The Plan's land use policy aides in decision regarding infrastructure development, conservation of natural resources, economic development, public services, and was acknowledged because it addressed 12 of the 14 base goals and one (Willamette Greenway) of the five applicable coastal or special resource goals.
- The Plan is the basis for and implemented by community development code (zoning) regulations. Plan policies can sometimes be regulatory ("shall" statements) and are often organized consistently with statewide planning goals, but not always.

## What Are the Support Documents?



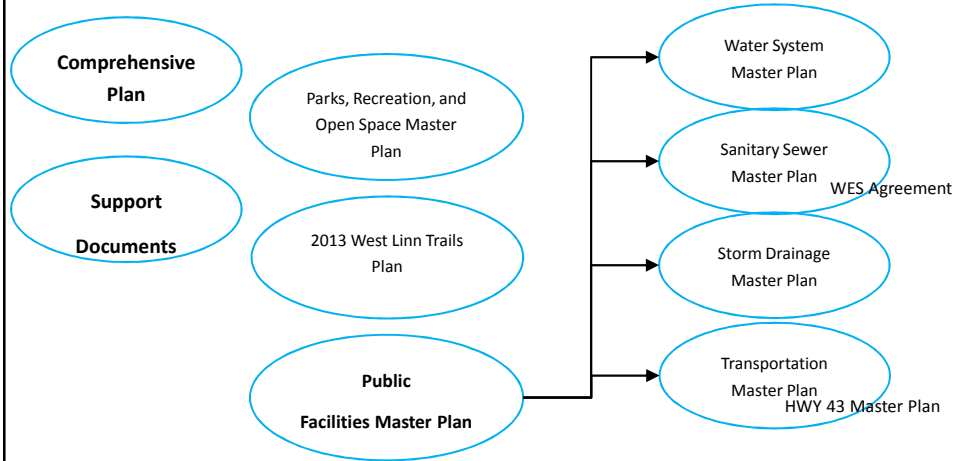
The plan is a set of findings, goals, policies and action measures that address all applicable statewide planning goals.

The plan's support documents provide the objective data and research into current conditions, issues, and trends. This information can be found in the supporting documents:

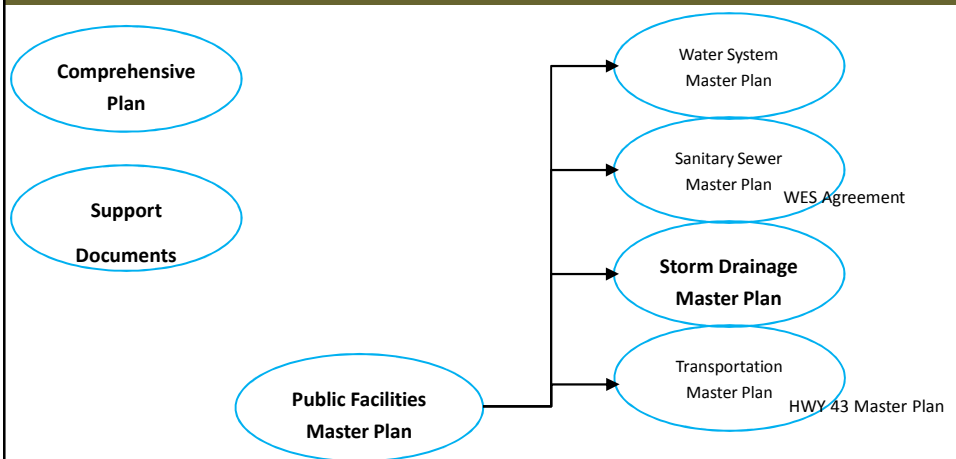
- Public Facilities Master Plan
  - Transportation Systems Plan
  - Hwy 43 Corridor Plan
  - Sanitary Sewer System Master Plan
  - Water System Master Plan
  - Storm Drainage Master Plan
- 2013 Parks, Recreation and Open Space Plan
- 2013 Trails Plan

Other plans exist (have not been identified as support documents)

## Comprehensive Plan and Support Documents



## Comprehensive Plan and Public Facilities Plans - Storm Drainage



## Storm Drainage Master Plan



### BACKGROUND:

- ◆ 1967 CH2M Engineers and Planners prepared a storm sewer and drainage study.
- ◆ December 1982 Murray Smith & Associates Inc. prepared a Storm Drainage Master Plan
- ◆ 1996 the City adopted the Storm Drainage Master Plan
- ◆ 2006 review of “Storm Drainage Master Plan” completed and accepted by Resolution 06-42; two items pending a proposed name change and the Comprehensive Plan was not updated
- ◆ The current proposal before the Planning Commission is to make recommendation to City Council on the 2019 update to the Storm Drainage Master Plan

## Storm Drainage Objectives (simplified)



- ◆ Evaluating stormwater system needs in West Linn
- ◆ Identify known areas of stormwater drainage problems and flooding and provide project solutions
- ◆ Enhance/expand water quality treatment and retrofits to expand treatment area coverage.
- ◆ Address maintenance activities, system condition deficiencies, and water quality on a city-wide scale.

## Storm Drainage Regulatory Objectives



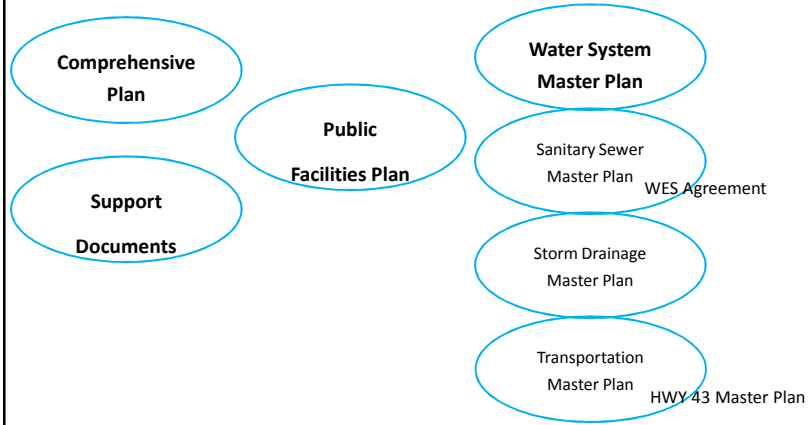
- To support regulatory directives under the City's Phase I National Pollutant Discharge Elimination System (NPDES) municipal separate storm sewer (MS4) Permit (Permit)
- To meet stormwater-related permit obligations as documented in their Stormwater Management Plan (SWMP) and referenced in intergovernmental agreements (IGAs) and standard operating procedures (SOPs) and technical documents
- The Oregon Department of Environmental Quality (DEQ) is responsible for implementing provisions of the federal Clean Water Act (CWA) pertaining to stormwater discharges and surface water quality

## Joint Permit



- The City of West Linn is one of 13 co-permittees on the Clackamas County Phase 1 NPDES MS4 Permit for discharges from their stormwater system. The City's SWMP addresses
  - Illicit Discharge Detection and Elimination
  - Industrial and Commercial Facilities
  - Construction Site Runoff Control
  - Education and Outreach
  - Public Involvement and Participation
  - Post-Construction Stormwater Management
  - Pollution Prevention for Municipal Operations
  - Stormwater Management Facilities Operation and Maintenance Activities

## Comprehensive Plan and Public Facilities Plans –Water System



## Water System Master Plan



### BACKGROUND:

- ◆ Potable water comes from the South Fork Water Board; an intergovernmental agency owned by West Linn & Oregon City.
- ◆ The SFWB operates a conventional water treatment plant located on the **south side** of the Clackamas River near its confluence with the Willamette River.
- ◆ The SFWB system includes **intake facilities**, a water treatment plant, and a transmission pipeline to a pump station located on Division Street **in Oregon City**
- ◆ September 1982, City adopt new Water System Master Plan
- ◆ 1999 City adopted a new Water System Master Plan

## Protection of Natural Resources



- The Plan recognizes protection of Goal 5 Open Space and Natural Resources and the Code implements riparian protection, habitat conservation and has special setbacks.
- Updates of Master Plans must address and retain this relationship

## Updating Master Plans and retention of information



- The Plan is the guiding document and the Code is the implementation document.
- Regulatory items in the Plan are referenced to identify policy or clarify authority and reference core criteria that is implemented in the CDC.
- The Code should contain needed coordination, required plans or specific criteria for agency permits etc.



## Why talk about other Master Plans?



- ✦ The Comprehensive Plan is the guiding document and provides policy direction for the Community Development Code to implement.
- ✦ The Comprehensive Plan is a Goal, Policy and Action document that relies upon support documents for the inventory, analysis and maps..
- ✦ Some questions require consideration of multiple plans. In our example,
  - questions on protection of riparian vegetation, bank erosion, streams water quality and temperature is a Goal 5 habitat issue.
  - questions regarding wildlife habitat that use riparian areas to navigate through the city is also a Goal 5 Water Resource issue.

## Next steps



- ✦ A worksession is scheduled for September 4 to provide answers to any questions that were raised tonight.
- ✦ This workshop will also provide time to complete research on the draft ordinance and provide a copy for your review at the next work session.
- ✦ A hearing on this matter is scheduled for September 18th



QUESTIONS OF PLANNING STAFF?

- PRESENTATION BY PUBLIC WORKS -



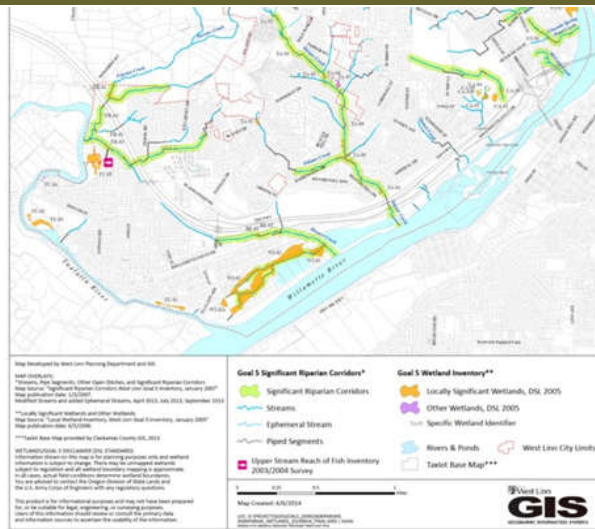
# Water Resource Area Map – North Half



Planning Commission 08-07-2019

21

# Water Resource Area Map – South half



Planning Commission 08-07-2019

22

# Storm Drainage System Combined Sheets L-3 & M-3



Planning Commission 08-07-2019

23

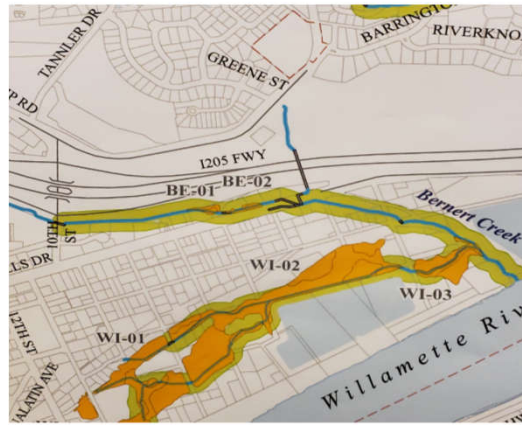
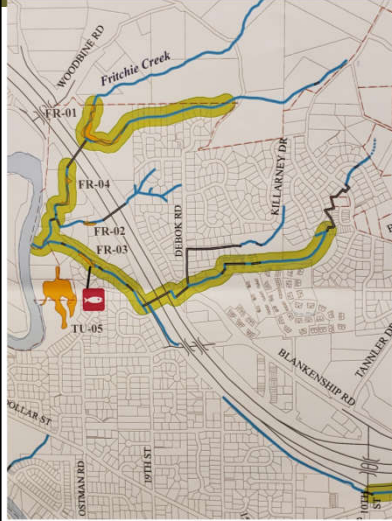
# Comparison – proposed conversion pipe to surface storm Drainage



Planning Commission 08-07-2019

24

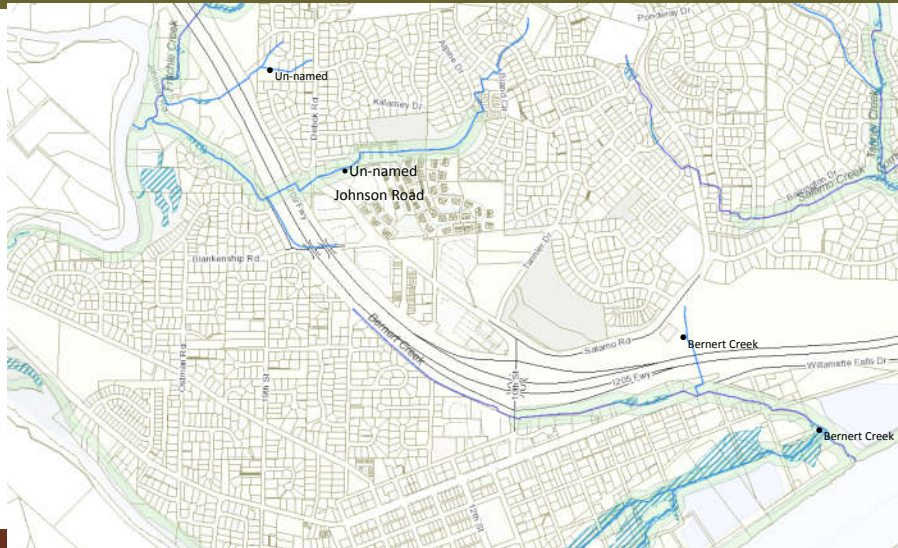
Comparison – discussed stormwater pipe to converted to surface storm drainage



Planning Commission 08-07-2019

25

Comparison – discussed stormwater pipe to converted to surface storm drainage



Planning Commission 08-07-2019

26

## Summary of Facts



- West Linn Wetland, Riparian and Wildlife Habitat Inventory references Bernert Creek – BE-01 and BE-02 as south of I-205. It flows along 205 until it turns south to flow into the Willamette River.
- Water Resource Map (WRA) is based on this study and shows the Tannler site has no wetland, creek or river – Bernert Creek does not extent or flow onto this site.
- DR-17-04 White Oak Savanna Nature Playground was approved on 9/8/17 and no appeal was filed. As noted above no creek or stream was missed nor was there an oversight for needed creek protection.
- The site does contain a storm drainage pipe. A concept to remove a storm drainage pipe would create only a storm drainage ditch. There is no natural source of water to feed that ditch. The pipe removes storm water runoff.