



CITY OF  
**West  
Linn**

## Planning Commission - Public Hearing

PLN-19-01  
Sanitary Sewer Master Plan update  
July 17, 2017



## Background Information

**Oregon Planning Program  
City Of West Linn Acknowledgement Process**





Before starting the Plan update;  
let's review the  
Oregon Land Use System.



CITY OF  
**West  
Linn**

- ◆ **Oregon's Planning Program** History - Senate Bill 100
- ◆ Senate Bill 100: Created Land Conservation and Development Commission (LCDC) and Department of Land Conservation and Development (DLCD)
- ◆ Directed LCDC to develop statewide planning goals
- ◆ Required all cities and counties to adopt comprehensive plans
- ◆ Gave LCDC the authority to approve or reject comprehensive plans
- ◆ Required state agencies to comply with comprehensive plans



**Land Conservation & Development Commission (LCDC)**

- Seven citizen volunteers appointed by Governor and approved by Senate
- Geographic representation
- Tasked with adopting state land use goals and rules
- Ensures local plan compliance with goals
- Hears certain land use cases

**Land Use Board of Appeals**

Created in 1979  
Designated body for land use appeals  
Three "referees" appointed by Governor, confirmed by the Senate  
OAR 661: "...intended to promote the speediest practicable review of land use decisions..."

## Oregon Planning Program – Planning Background Continued



The City's Comprehensive Plan was adopted on December 31, 1983. The Plan was developed in accordance with the Oregon Statewide Planning Goals and was acknowledged by LCDC, DLCD and Governor on May 31, 1984. This certified the city as compliant with the land use program.

A BIG deal!

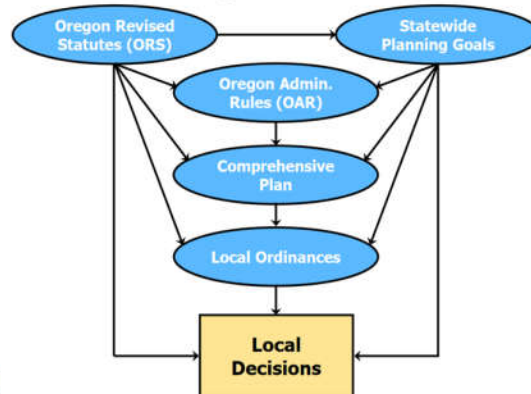


5

## Land Use Regulation Hierarchy



### Land Use Regulation Hierarchy



Planning Commission 07-17-2019

6

## Comprehensive Plan



- The City's acknowledged Comprehensive Plan (Plan) is a guiding land use document guiding policy makers for local government.
- The Plan's land use policy aides in decision regarding infrastructure development, conservation of natural resources, economic development, public services, and was acknowledged because it addressed all 12 base goals and the applicable natural resource goals.
- The Plan is the basis for and implemented by community development code (zoning) regulations. Plan policies can sometimes be regulatory ("shall" statements) and are often organized consistently with statewide planning goals, but not always.

## What are support documents?



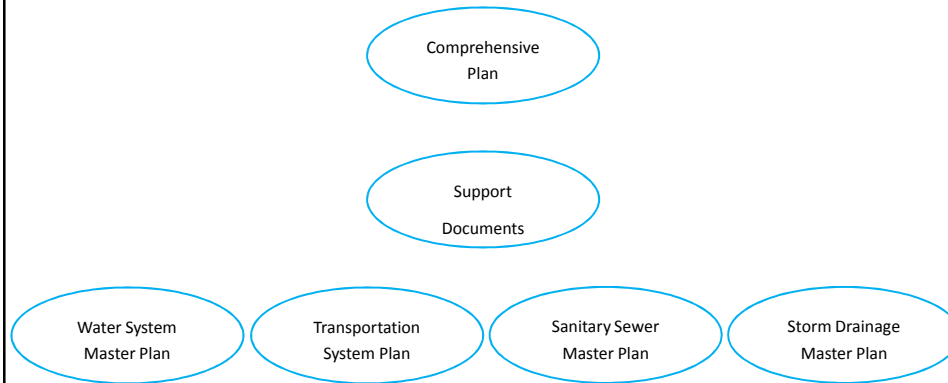
The plan is a set of findings, goals, policies and action measures that address all applicable statewide planning goals.

The plan's support documents provide the objective data and research into current conditions, issues, and trends. This information can be found in the supporting documents:

- Transportation Systems Plan
- Sanitary Sewer System Master Plan
- Water System Master Plan
- Storm Drainage Master Plan

Other plans exist

## Land Use Regulation Hierarchy



Planning Commission 07-17-2019

9

## Sanitary Sewer Master Plan



### BACKGROUND:

- 1977 CRAG (Columbia Region Council of Governments) developed an area wide wastewater treatment management plan (208 Wastewater Treatment Plan.)
- 1980-85 Tri-City Sanitary District founded and funded with a bond issue.
- 1989 the City adopted a Sanitary Sewer Master Plan
- 1999 the City updated the Sanitary Sewer Master Plan
- The Current proposal before the Planning Commission is to make recommendation to City Council on the 2019 Sanitary Sewer Master Plan

10



### SUMMARY STATEMENTS

- ◆ The Comprehensive Plan is a document with the applicable elements of the state wide planning goals (omits agriculture, forestlands, estuarine, coastal shore lands, beaches & dunes, and ocean resources).
- ◆ The Sanitary Sewer Master Plan was part of the acknowledged Comprehensive plan and has been updated on two occasions.
- ◆ The Sanitary Sewer Master Plan is listed as a support document to the Comprehensive Plan. It is the technical inventory and assessment supporting the Goals, Policies and Action Measures adopted in Goal 11 of the Comprehensive Plan.
- ◆ This review has considered the Oregon Land Use process and the role of support documents.



The issue before you tonight is the 2019 Sanitary Sewer Master Plan.

The action required by the Planning Commission is to make recommendation to City Council on this support document.

Public Works Engineer Amy Pepper will introduce the proposed updates to the Sanitary Sewer Master Plan.



QUESTIONS OF PLANNING STAFF?

- PRESENTATION BY PUBLIC WORKS -