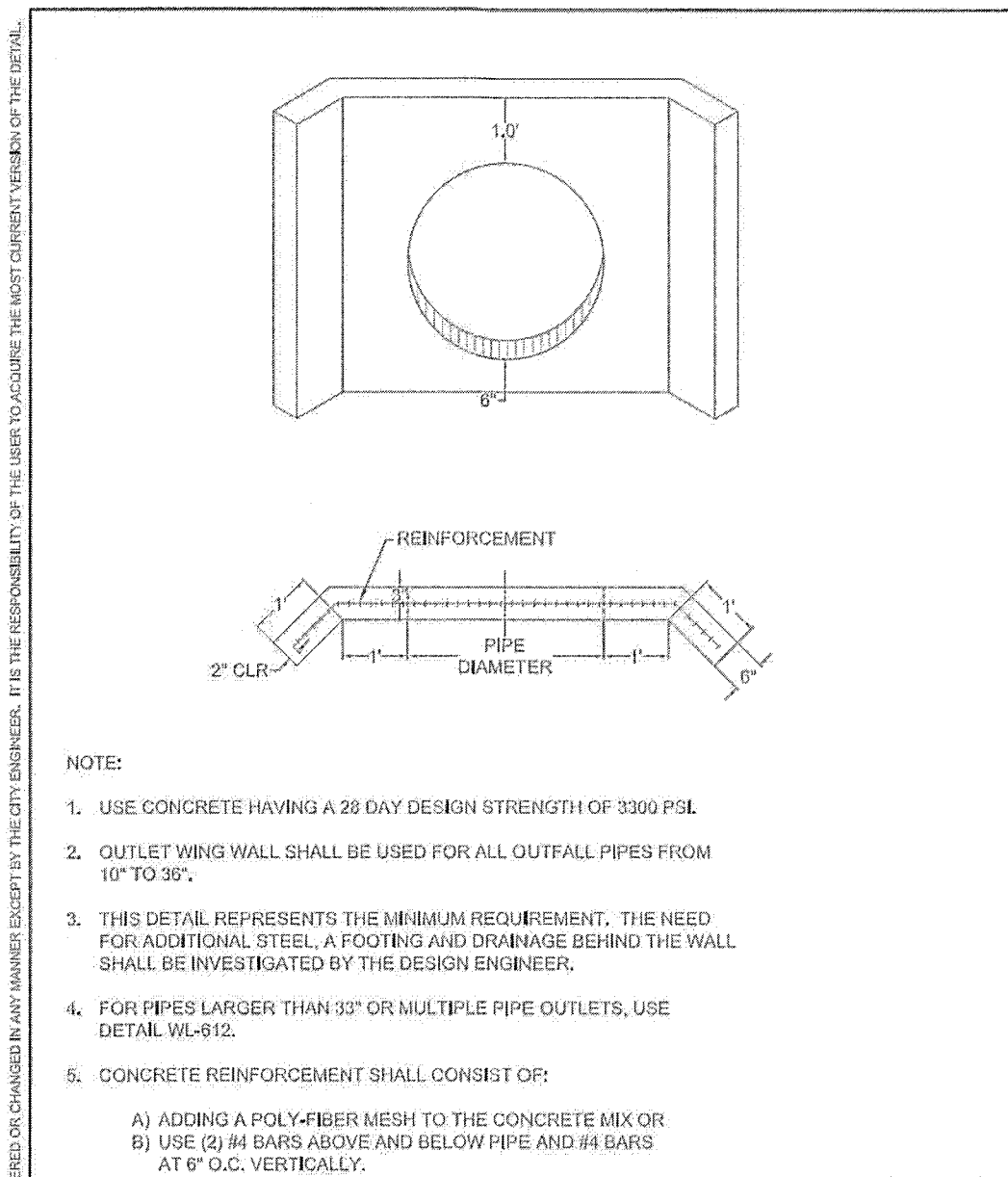


- NOTES:
- CONTRACTOR TO WIDEN EXCAVATION AS REQUIRED TO OBTAIN COMPACTION WITH CONTRACTORS COMPACTION EQUIPMENT.
 - 10 GA STEEL PLATE, BITUMINOUS COATED BASIN AS MANUFACTURED BY GIBSON STEEL, GRATEMASTER OR APPROVED EQUAL.

7 OVERFLOW INLET - TYPE 2
SCALE: N.T.S.



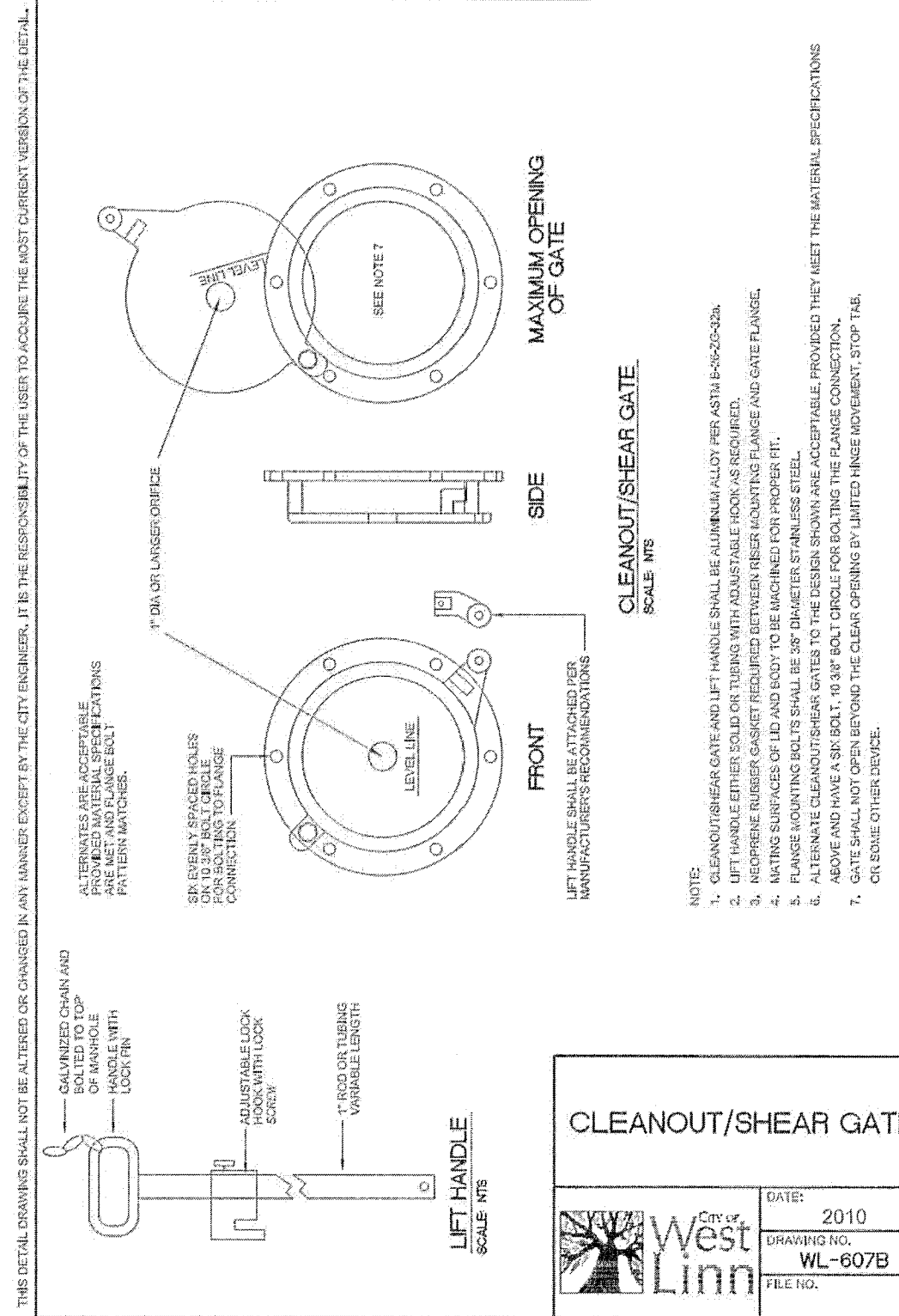
NOTE:

- USE CONCRETE HAVING A 28 DAY DESIGN STRENGTH OF 3300 PSF.
- OUTLET WING WALL SHALL BE USED FOR ALL OUTFALL PIPES FROM 10" TO 33".
- THIS DETAIL REPRESENTS THE MINIMUM REQUIREMENT. THE NEED FOR ADDITIONAL STEEL, A FOOTING AND DRAINAGE BEHIND THE WALL SHALL BE INVESTIGATED BY THE DESIGN ENGINEER.
- FOR PIPES LARGER THAN 33" OR MULTIPLE PIPE OUTLETS, USE DETAIL WL-612.
- CONCRETE REINFORCEMENT SHALL CONSIST OF:
 - ADDING A POLY-FIBER MESH TO THE CONCRETE MIX OR
 - USE (2) #4 BARS ABOVE AND BELOW PIPE AND #4 BARS AT 6" O.C. VERTICALLY.

OUTLET HEADWALL
(FOR OUTLET PIPES OF 10" TO 33")

DATE:	2010
DRAWING NO.:	WL-613
FILE NO.:	

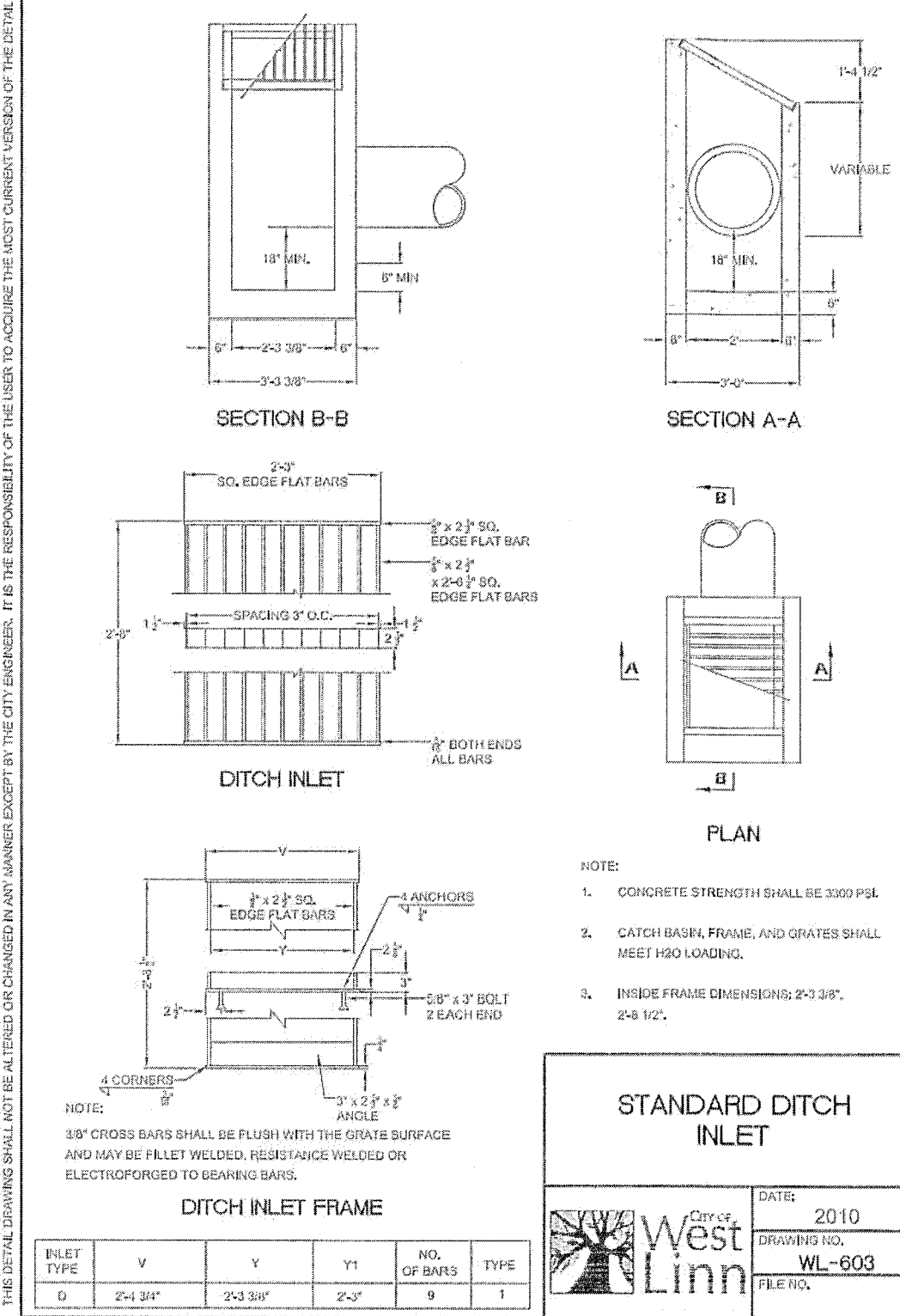
5 HEADWALL
SCALE: N.T.S.



CLEANOUT/SHEAR GATE

DATE:	2010
DRAWING NO.:	WL-607B
FILE NO.:	

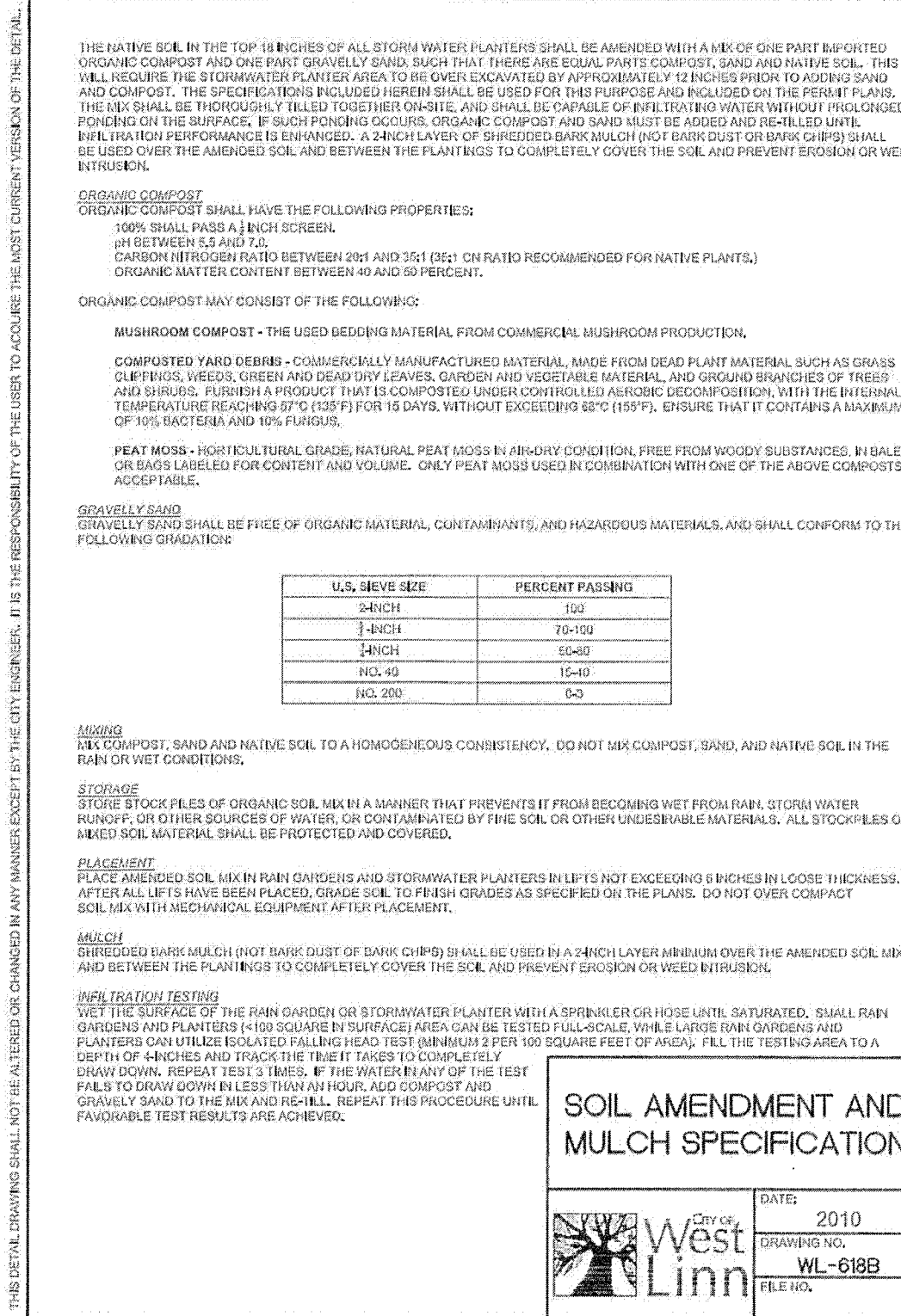
3 CLEANOUT/SHEAR GATE
SCALE: N.T.S.



STANDARD DITCH INLET

DATE:	2010
DRAWING NO.:	WL-603
FILE NO.:	

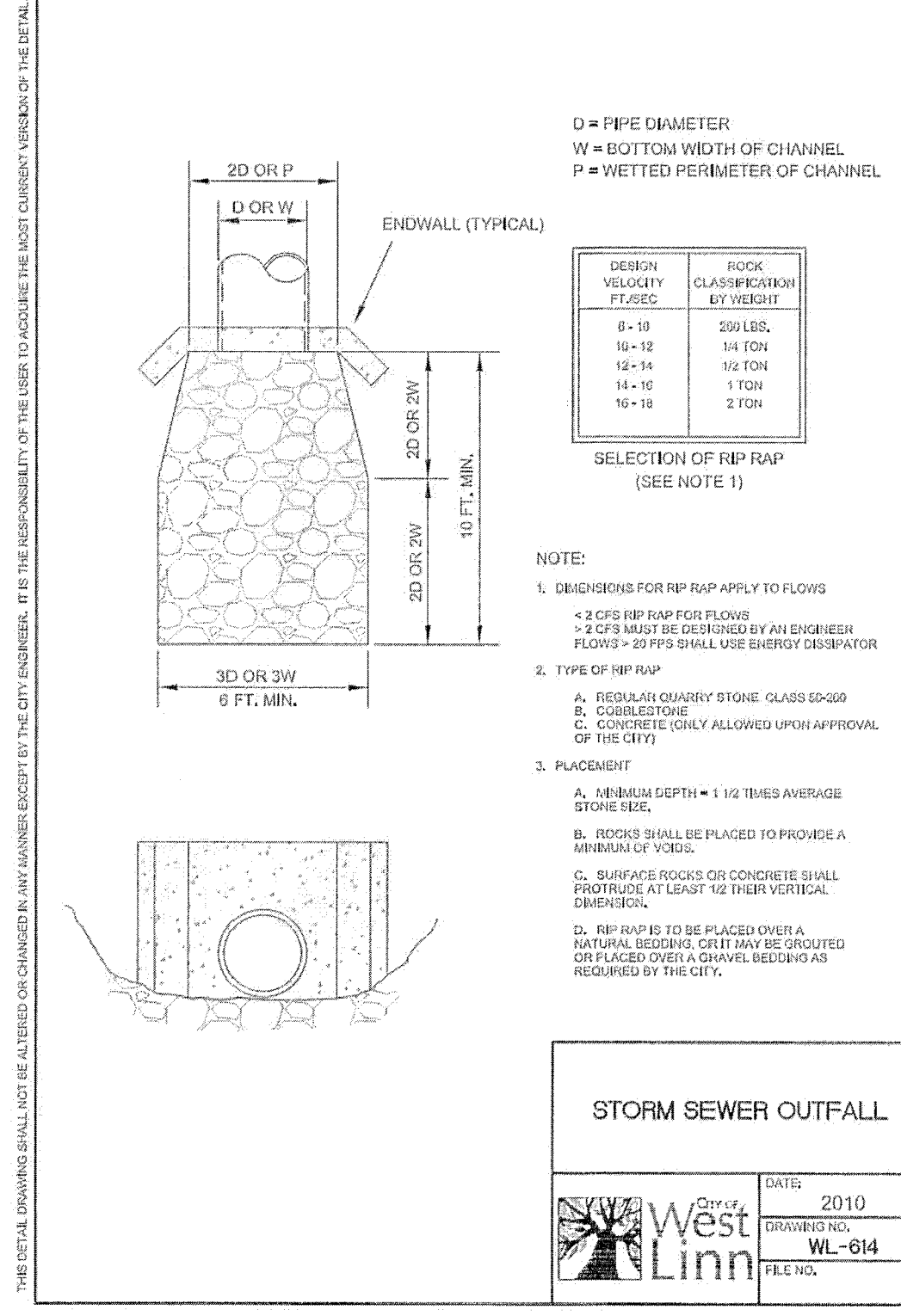
1 STANDARD DITCH INLET
SCALE: N.T.S.



SOIL AMENDMENT AND MULCH SPECIFICATION

DATE:	2010
DRAWING NO.:	WL-618B
FILE NO.:	

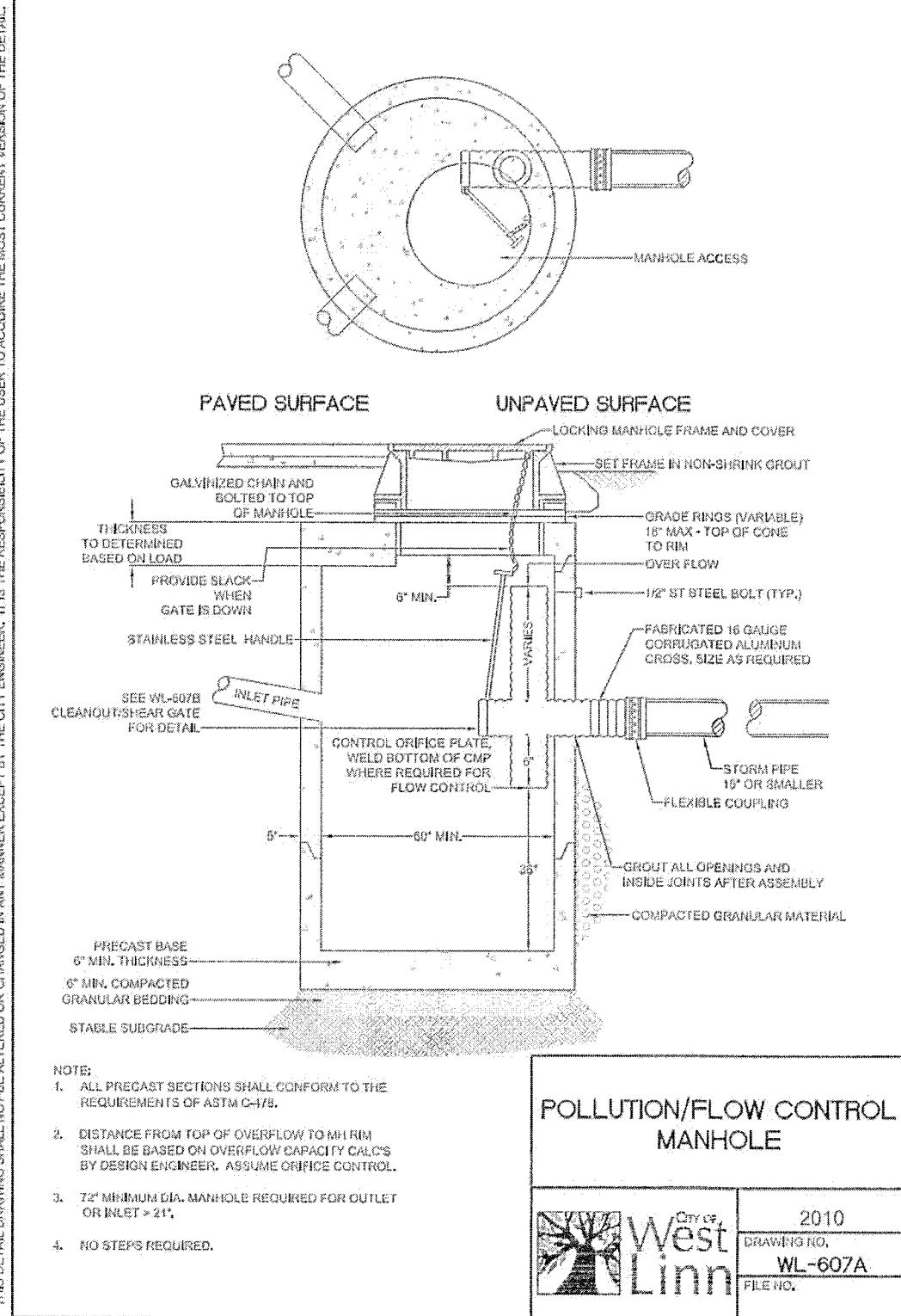
6 SOIL AMENDMENT AND MULCH SPECIFICATION
SCALE: N.T.S.



STORM SEWER OUTFALL

DATE:	2010
DRAWING NO.:	WL-614
FILE NO.:	

4 STORM SEWER OUTFALL
SCALE: N.T.S.



POLLUTION/FLOW CONTROL MANHOLE

DATE:	2010
DRAWING NO.:	WL-607A
FILE NO.:	

2 POLLUTION/FLOW CONTROL MANHOLE
SCALE: N.T.S.

WEST LINN WILSONVILLE

2755 SW Borland Road
Tualatin, OR 97062
(503) 673 7995

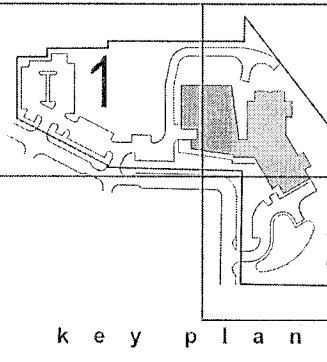


Dull Olson Weekes - IBI Group
Architects, Inc.

907 SW Stark Street Portland, OR 97204
tel 503 226 6950 fax 503 273 9192
www.dowa-ibigroup.com www.ibigroup.com



SUNSET REVISIONING
West Linn Wilsonville School District
2351 Oxford St. West Linn, OR 97068
t: (503) 673-7988



phase | Conformed Set

date | June 15, 2016

revisions |

ASI-02 | 07.05.2016

project # | 15015

DT

C7.05