

Overview of Architectural Styles In Oregon, 1840s to 1970s



**Handout developed for the
West Linn Historic Nominations Workshop**
October 14, 2023

Kristen Minor, Minor Planning & Design

Residential Types are not styles

Residential type examples:

(see Forms/types handout)

Bungalow

Four-square

Courtyard apartment



What is STYLE?

Styles

Prairie School
 Art Nouveau
 Streetcar Commerc'l
 Craftsman
 Cascadian

Ranch
 Brutalist
 Post-Modern

Italianate
 Queen Anne
 Empire
 Romanesque
 Vernacular/ Farm
 Shingle

Streamline Moderne
 Art Deco
 Stripped Classical
 International style
 NW Regional

Beaux Arts
 Tudor, English cottage
 Colonial Rev.
 Mediterranean Rev.

Greek Rev.
 Gothic Rev.

							Modern	
						Early Modern		
				American Forms				
				Historic Period Styles				
			Early Colonial Revival					
			Late Victorian/eclectic styles					
	Renaissance & baroque revivals							
Classical & medieval revivals								
1840-1855	1855-1870	1870-1885	1885-1900	1900-1915	1915-1930	1930-1945	1945-1960	1960-1975



Residential- Gothic Revival, 1845 (Maine)



Residential- Greek Revival, 1856



Residential- Greek Revival, 1851



Commercial- Gothic Revival, nd



Greek and Medieval revivals- 1840s to 1870



Utilitarian- Vernacular Barn, c1930



Utilitarian- Vernacular Barn, c1880



Utilitarian- Vernacular Barn, c1910



Commercial- Western False Front, no date



Residential- Italianate, 1881



Residential- Italianate (no date)



Commercial- Italianate, 1883



Commercial- Italianate, 1908

Renaissance & Baroque revival Styles: Italianate- late 1870s to 1890



Residential- Vernacular or Folk Victorian, c1860



Institutional- Vernacular or Folk Victorian, c1890

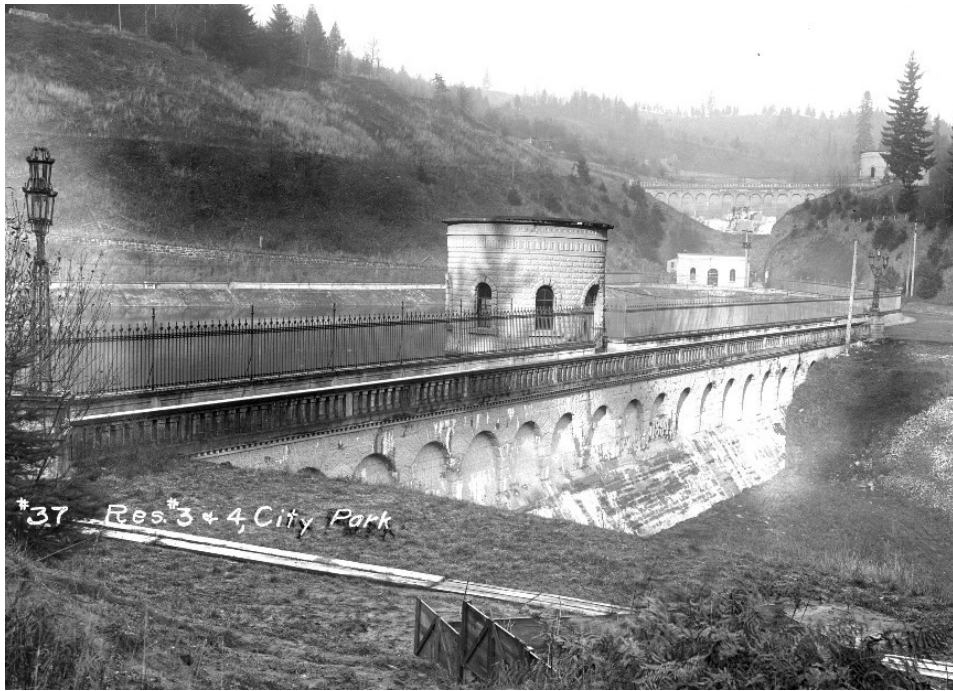


Residential- Vernacular, 1900



Commercial- Vernacular or Folk Victorian, c1905

Renaissance revivals: "Folk Victorian," 1870 to 1910



Institutional- Romanesque, 1894



Institutional- Queen Anne/ Romanesque, 1893-94



Residential- Romanesque, 1880s(?), NYC



Residential- Queen Anne, 1891

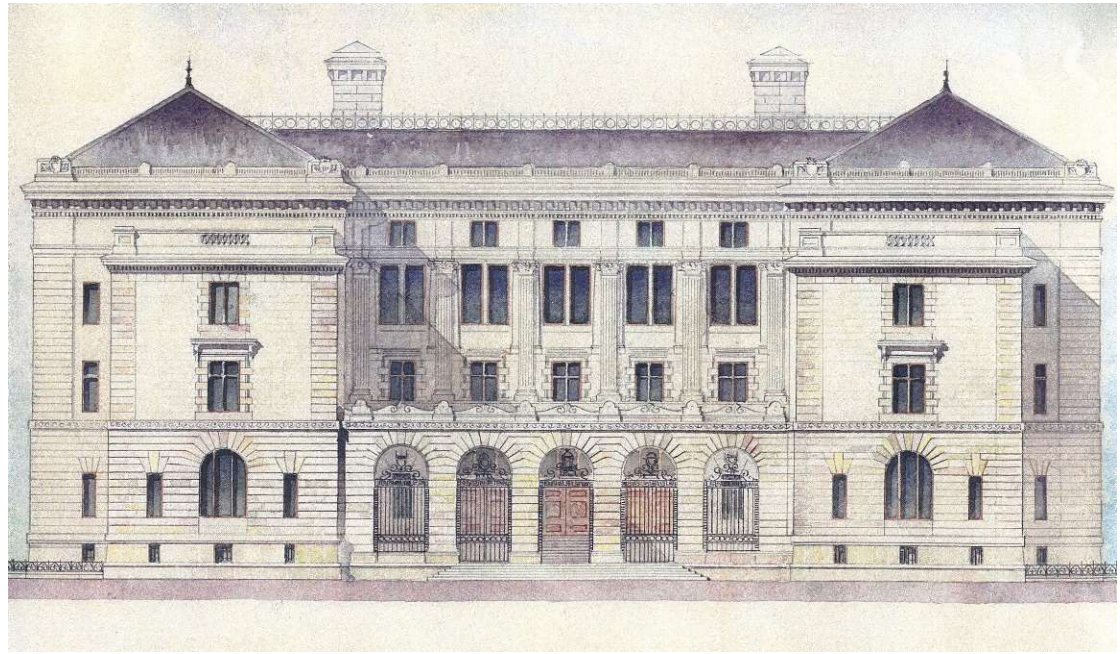


Residential- Queen Anne/ "Stick," 1903

Renaissance /Baroque revivals: Romanesque and Queen Anne 1880- 1910



Institutional- Neoclassical, 1928



Institutional- Beaux Arts, 1901



Residential- Neoclassical, nd (TX)



Institutional- Beaux Arts/ Neoclassical, 1923



Eclectic Revivals: Beaux Arts/ Neoclassical 1885-1930



Institutional- Colonial Revival (Georgian), 1915



Residential- Colonial Revival, 1912



Residential- Colonial Revival, nd



Institutional- Colonial Revival, nd



Institutional - Tudor, 1913



Residential-Tudor, 1927



Residential, Jacobean, nd



Residential, Tudor/English Cottage (with addition), 1930s

Revivals: Tudor and English Cottage 1900-1940



Mixed use- 20th Century Commercial, 1913



Mixed use- 20th Century Commercial, nd



Utilitarian- 20th Century Commercial, nd



Mixed use- 20th Century Commercial, 1909-1930s

American Forms & Styles: 20th C. / Streetcar Commercial 1900-1940



Commercial/Lodge- Cascadian, 1925



Residential- Prairie Style, nd



Governmental/Lodge- Cascadian, 1938



Institutional- Prairie Style, 1923 (IL)

American Forms & Styles: Cascadian and Prairie School 1905-1925



Residential- Craftsman, c1910



Residential- Craftsman, nd (WA)



Residential- Craftsman, 1909



Residential- (mail-order) Craftsman, 1910-19

American Forms & Styles: Craftsman 1905-1930 (and Arts & Crafts)



Residential – Mediterranean Rev., nd



Commercial- Mediterranean Revival, 1924



Commercial- Mediterranean Rev., 1920s



Commercial- Spanish Col. Rev., 1926



Residential- Mediterranean Rev., 1929

Revivals: Spanish Revival, Mediterranean Revival 1915-1945



Commercial- Art Deco/ Streamline Moderne, 1947



Commercial- Art Deco, 1947



Commercial- Streamline Moderne, 1949



Commercial- Art Deco on left (WA), Streamline Moderne on right. (no dates)



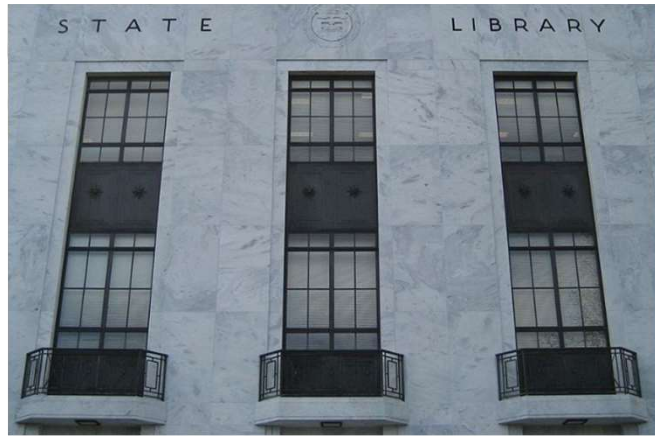
Early Modern Styles: Streamline Moderne and Art Deco



Residential- Minimal Traditional, 1930s



Institutional- Stripped Classical, 1939



Residential- WWII-era cottage, 1946 (WA) and 1949 (WA)



Commercial- Stripped Classical, 1947

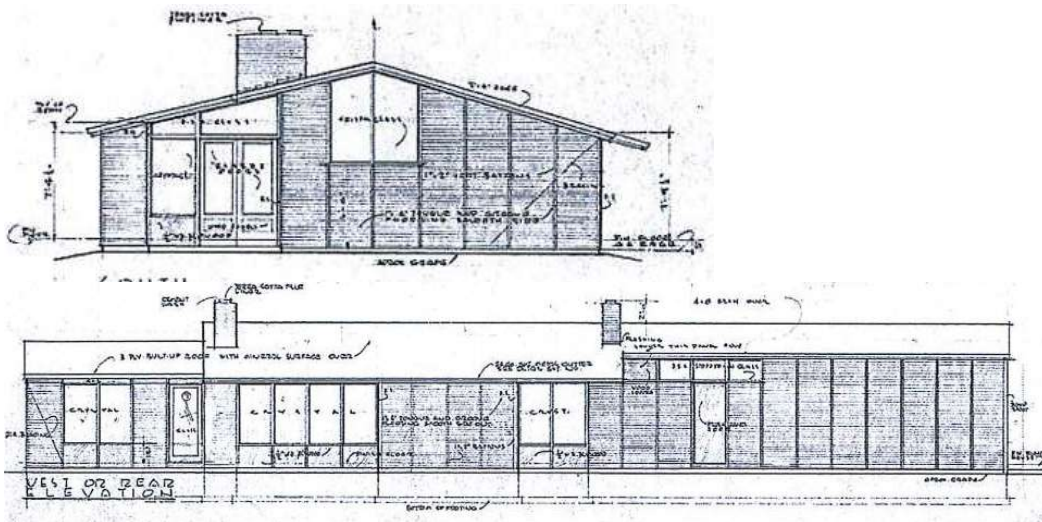
Early Modern Styles: Stripped Classical and Minimal Traditional



Institutional/Commercial- NW Regional, 1948 (Visitor Center)

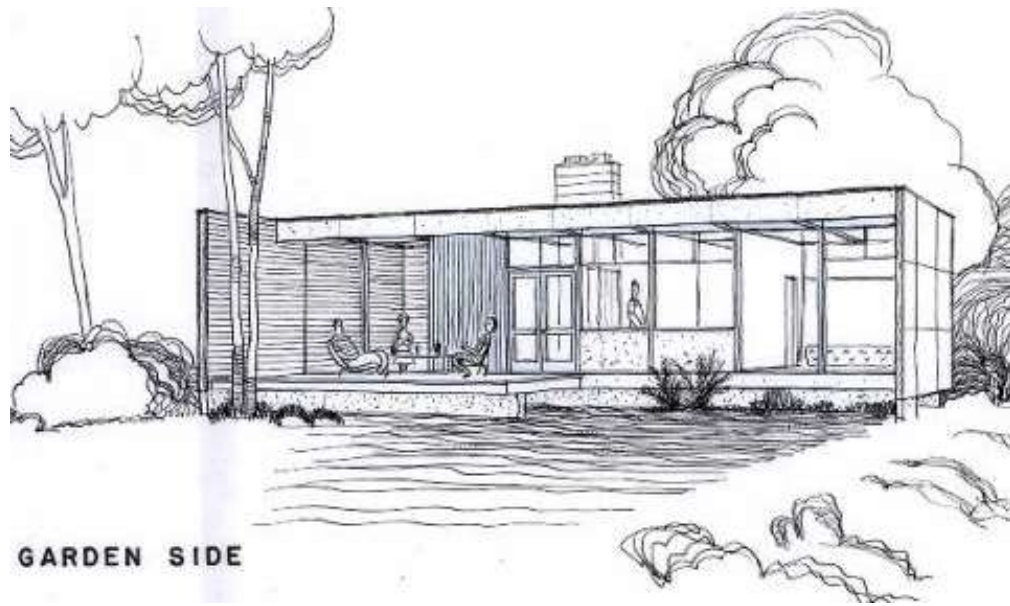


Residential- NW Regional, 1952 (Ott House)

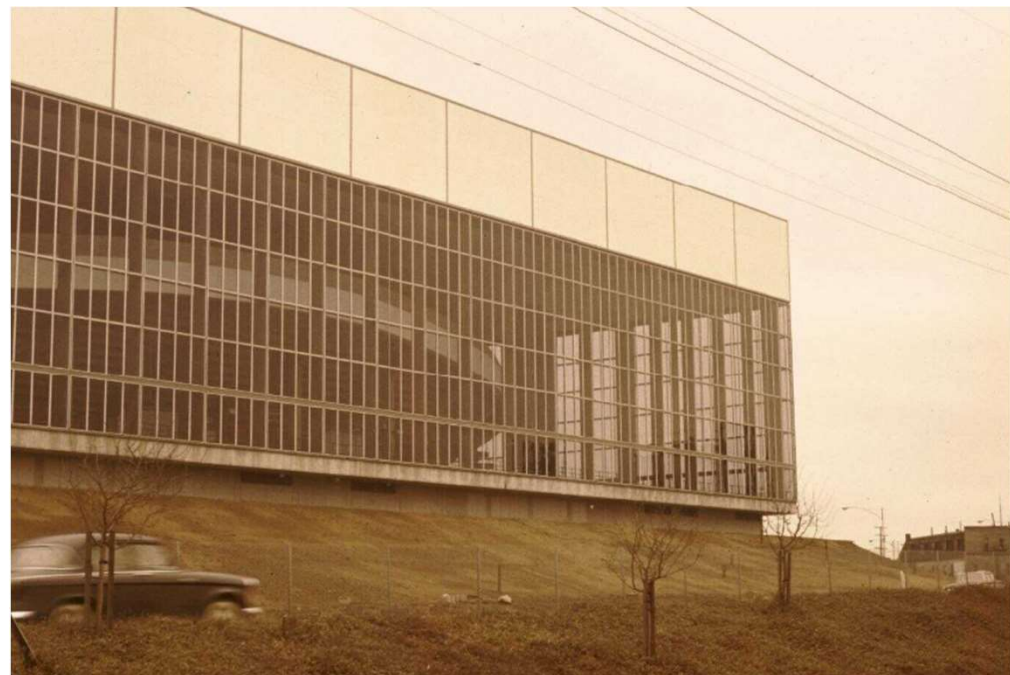


Residential- NW Regional, 1952 (Ott House)





Residential- International Style, 1950 (WA)



Commercial/ Arena- International Style, 1960



Residential- International Style, 1949-51 (Chicago)

Early Modern Styles: International Style 1948-1960



Residential- Ranch development, 1952 (WA)



Residential- Split-level Ranch, 1960 (WA)



Residential- Ranch, nd



Residential- Modern Ranch, 1957 (WA)

Residential Modern Styles: Ranch, Split-levels 1945-1965



Institutional- Modern/ Geodesic dome, 1960s (MI)



Institutional/Transportation- Modern/ Neo-Expressionist, 1957 (MI)



Institutional- Modern, 1955



Residential- Modern (Usonian), FLW, 1957

Modern Styles: New Forms; Modern expressions



Institutional- "Mid-C Modern"/ Space Age, 1955



Institutional- Modern, 1955



Commercial- Modern/ Space Age, 1965



Commercial- "Mid-C Modern"/ Space Age, 1963

Modern Styles: Modern, "Mid-Century Modern"



Institutional- Brutalist, 1968



Commercial- Brutalist (altered), 1971 (MI)



Residential- Modern/ Brutalist, 1963



Institutional- Brutalist, 1971 (MI)

Late Modern Styles: Brutalism 1950-1980s