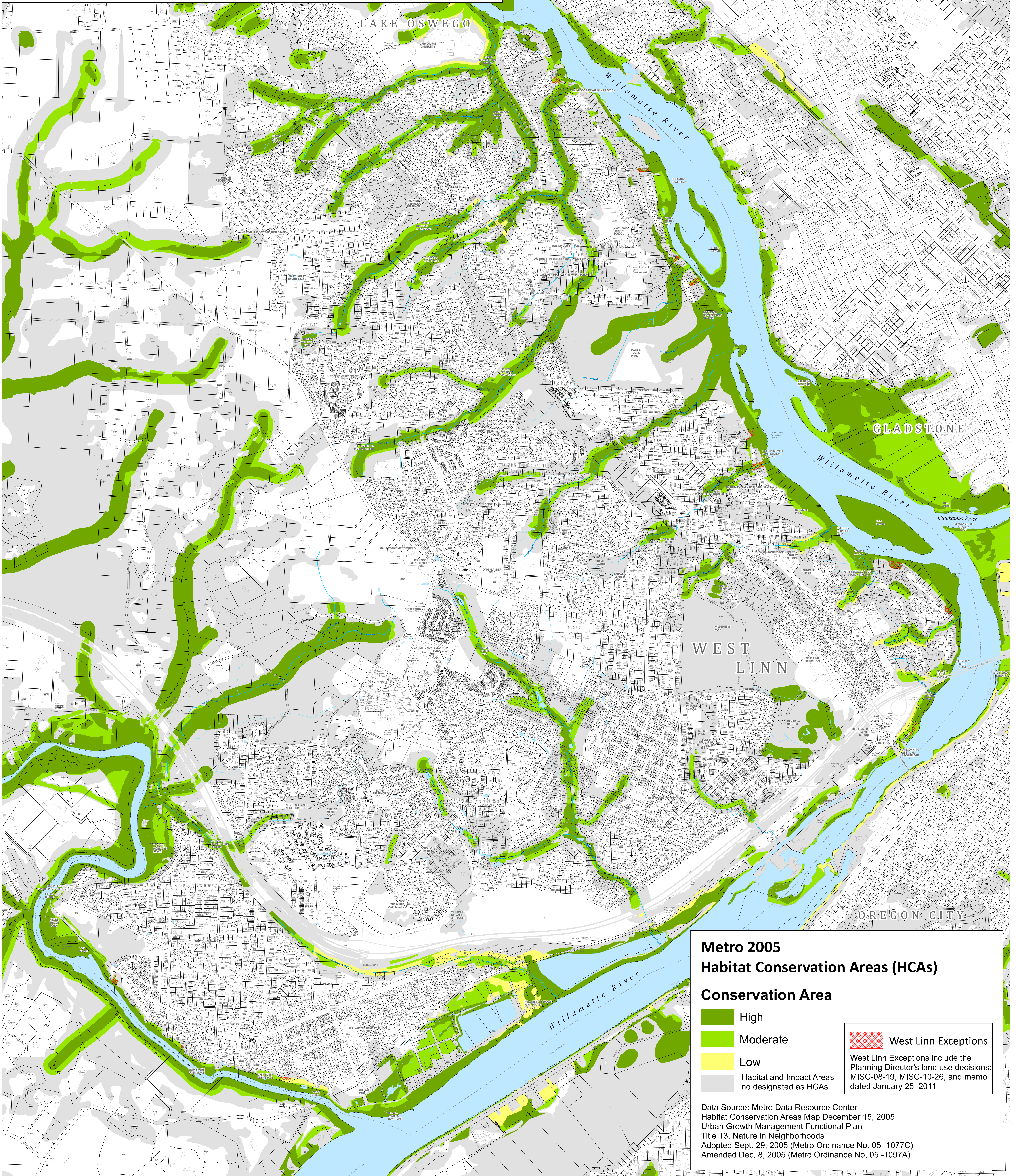


Metro's 2005 Habitat Conservation Area Map

COVERING THE CITY OF WEST LINN

SHOWN WITH WEST LINN'S
CURRENT GIS BASE MAP



Metro 2005 Habitat Conservation Areas (HCAs)

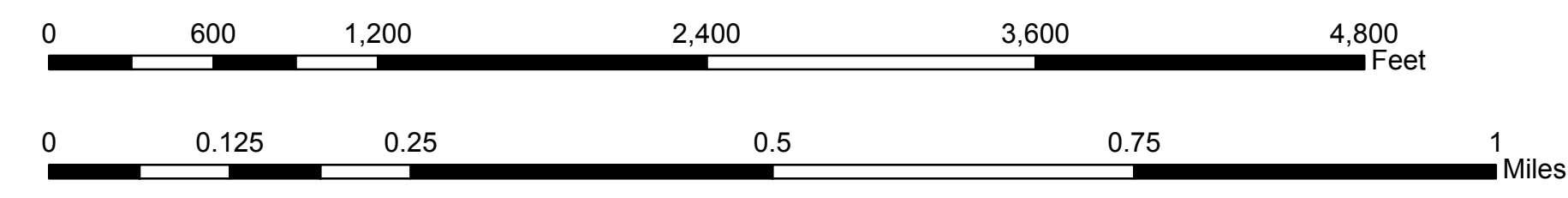
Conservation Area

- High
- Moderate
- Low
- Habitat and Impact Areas not designated as HCAs

West Linn Exceptions

West Linn Exceptions include the Planning Director's land use decisions: MISC-08-19, MISC-10-26, and memo dated January 25, 2011

Data Source: Metro Data Resource Center
Habitat Conservation Areas Map December 15, 2005
Urban Growth Management Functional Plan
Title 13, Nature in Neighborhoods
Adopted Sept. 29, 2005 (Metro Ordinance No. 05 -1077C)
Amended Dec. 8, 2005 (Metro Ordinance No. 05 -1097A)



This product is for informational purposes and may not have been prepared for, or be suitable for legal, engineering, or surveying purposes. Users of this information should review or consult the primary data and information sources to ascertain the usability of the information.

Tax Lot Parcel Base Map source: Clackamas County GIS
2005 Habitat Conservation Areas: Metro Data Resource Center
All other map layers and map production: West Linn GIS

LOC: G:\PROJECTS\GIS\PLANNING\METRO_HABITAT_2016\METRO_HABITAT_WL_TAXLOT_BASEMAP_201605.MXD | KAH | 5/3/2016

West Linn Base Map (Current 2016 GIS Mapping)

- Tax Lot Parcel Lines & Roads
- Structures
- Addresses
- West Linn City Limits
- Unimproved Right-of-Way
- Private Roads
- Streams (COWL-GIS)
- Rivers and Ponds

MAP PUBLICATION: May 3, 2016
GIS DATA COORDINATE SYSTEM: NAD 1983 HARN STATEPLANE OREGON NORTH FIPS 3601 FEET INTL