



CITY OF  
**West  
Linn**

# Planning Commission

---

DLCD Climate Friendly and Equitable Communities  
Implementation Work Session

April 3, 2024

# Climate Friendly and Equitable Communities



- Council appointed PC as working group
  - Five work sessions scheduled (including tonight)
  - Policy decisions
  - Need to adopt code amendments by end of 2024
  - DLCD grant funds for consultant assistance
- Goals for tonight's work session
  - Review and discuss parking reform policy choices
  - Ask clarifying questions about CFEC or policy choices
  - Request additional info or data for future work sessions
  - Provide initial feedback on eliminating all parking mandates





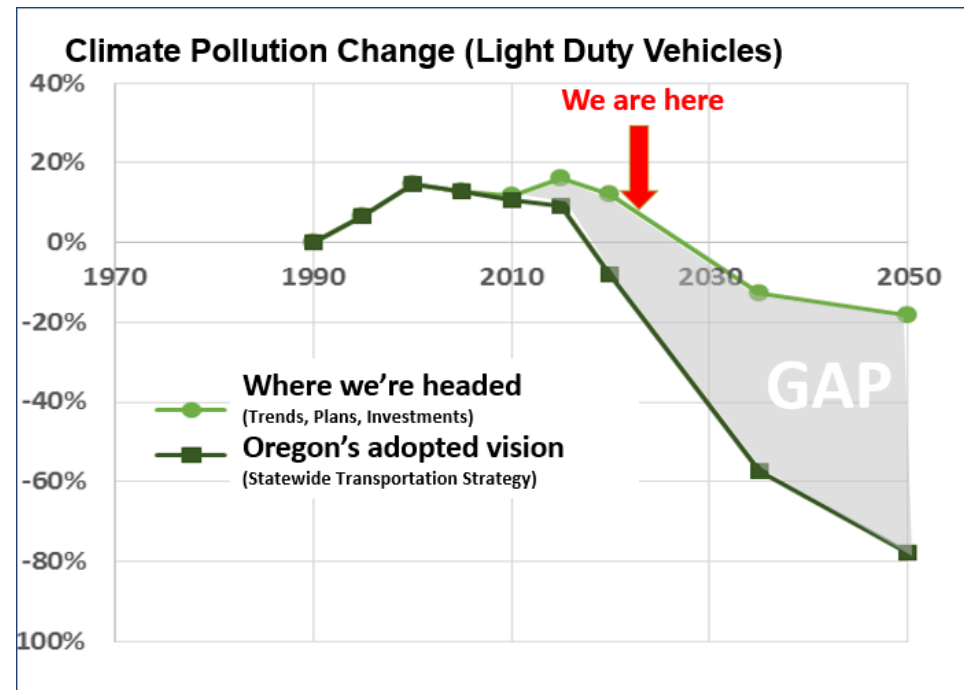
# Climate Friendly and Equitable Communities

## Why?

- 2007 Goal to reduce climate pollution 75% by 2050
- State was off track 15 years later
- Transportation 38% of climate pollution
- On track to reduce transportation pollution by 20% by 2050

## What?

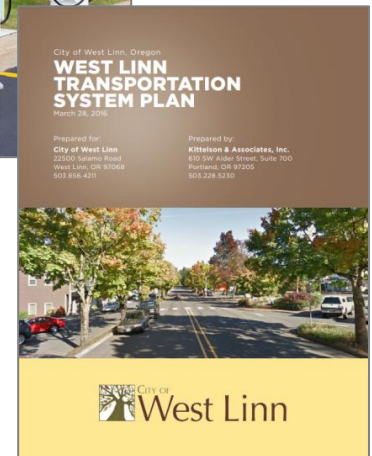
- Executive Order 20-04 in March 2020
- LCDC launched CFEC rulemaking project
- DLCD rulemaking committee
- Rules adopted July 2022 and modified November 2023





# Climate Friendly and Equitable Communities

- 🍃 Improve equity
- 🍃 Ensure everyone served by transportation, planning, housing, and planning efforts
- 🍃 City Implementation
  1. Reforming parking mandates and amending parking lot design standards
  2. Preparing for electric vehicle future
  3. Planning for future transportation options
  4. Adopting Metro 2040 Town Center boundaries





# Parking Reform

## Minimum Parking Requirements

- One-sized approach
- Hide costs of parking in housing/business costs

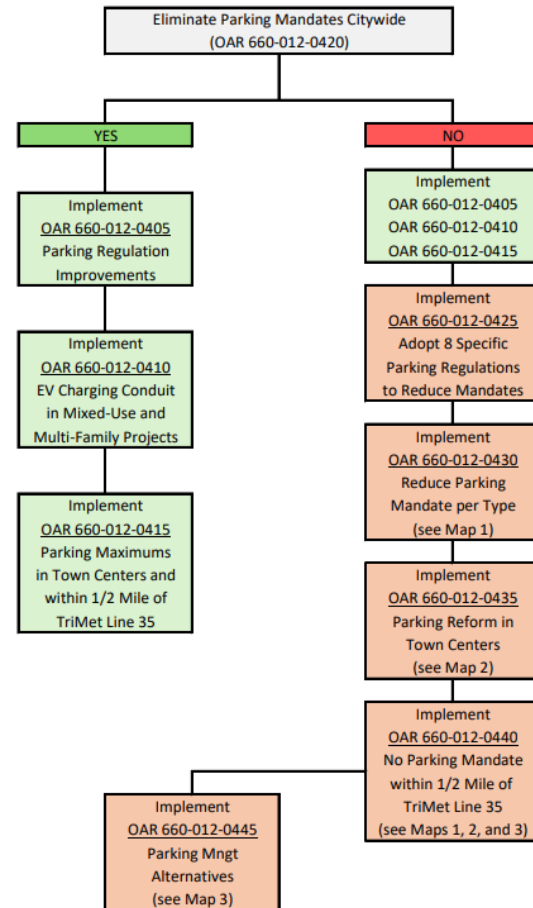
## CFEC Implementation

- Eliminate mandates in some cases
- Reduce mandates in other cases
- Parking lot design changes

## Policy Decision

- Remove all parking mandates; or
- Eliminate/reduce for certain areas or land uses and implement programmatic changes
- Adoption of code amendments by end of 2024

**City of West Linn CFEC Implementation Road Map**





# Initial Implementation Requirements



## DECEMBER 31st 2022

IMPLEMENTED VIA STAFF ACTION. NO CDC AMENDMENTS REQUIRED.

### Reduce Parking Mandates

OAR 660-012-0430 / 0440

Can no longer enforce parking mandates within 1/2 mile of Trimet routes 35 and 154

Can no longer mandate parking for small residential units, affordable units, childcare, facilities for people with disabilities, and shelters

Can no longer mandate more than 1 space per unit for multi-unit residential development

---

## MARCH 31st 2023

IMPLEMENTED VIA STAFF ACTION. NO CDC AMENDMENTS REQUIRED.

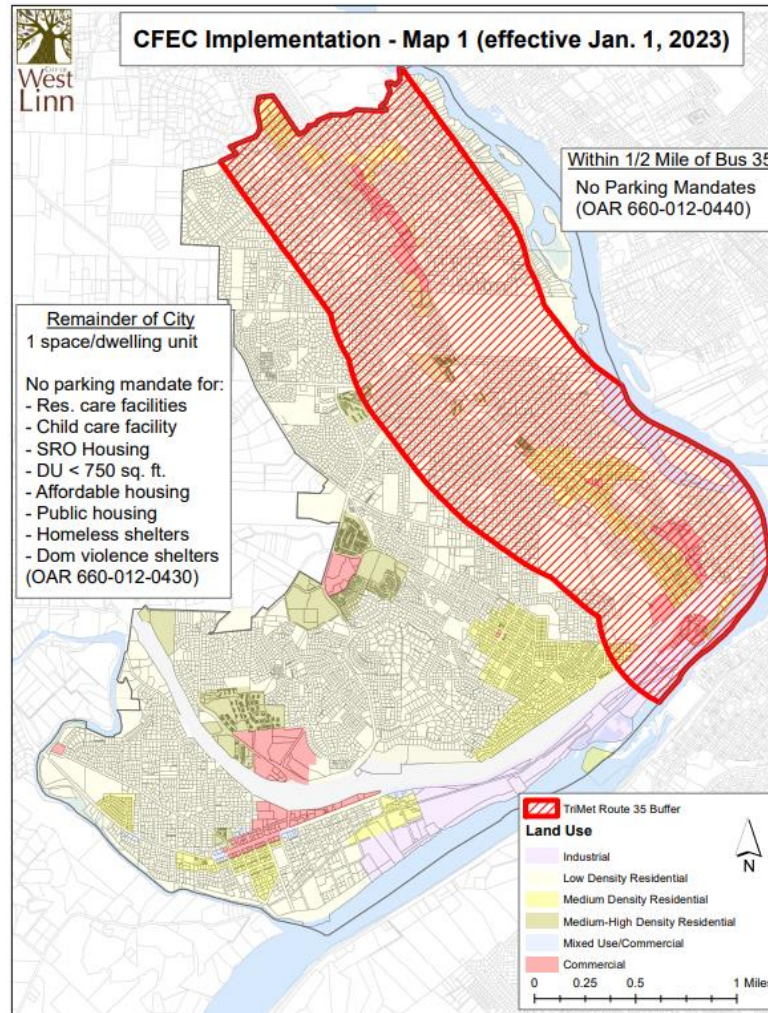
### Improve EV Charging Potential

OAR 660-012-0410

Conduit now required to serve 40% of parking spaces in new multifamily (>5 units) residential and mixed-use



# Initial Implementation Requirements

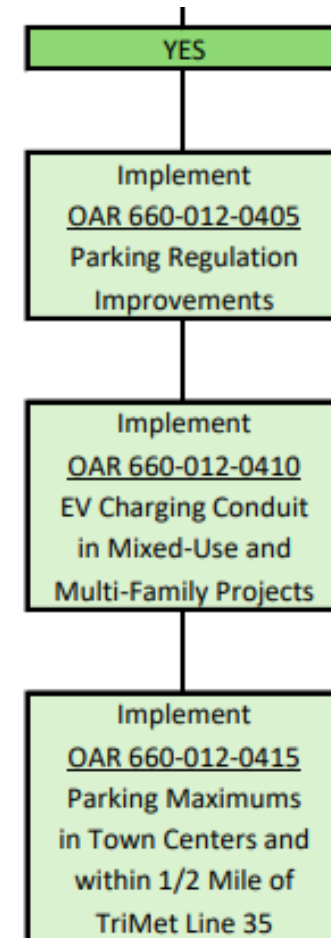




# Parking Reform – Remove All Mandates?

## What are other Metro cities considering?

City	Decision
Lake Oswego	Repeal all mandates (tentative)
Wilsonville	Repeal all mandates (tentative)
Oregon City	Do not repeal all mandates (tentative)
Milwaukie	Repealed all mandates
Tualatin	Repeal all mandates (tentative)
Tigard	Repealed all mandates
Beaverton	Repealed all mandates



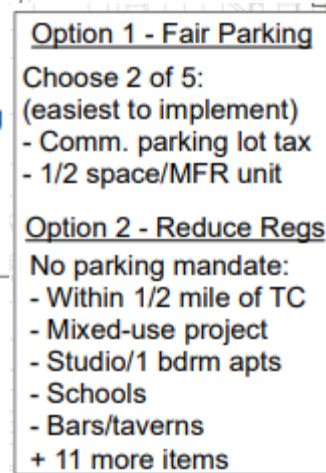
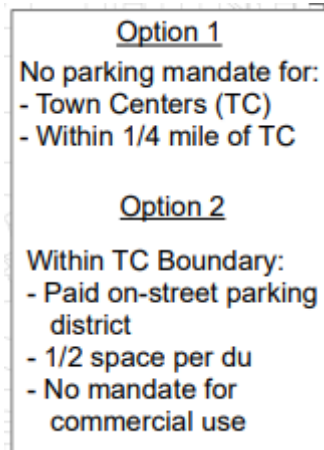




# Parking Reform – Remove All Mandates?

🍃 OAR 660-012-0435

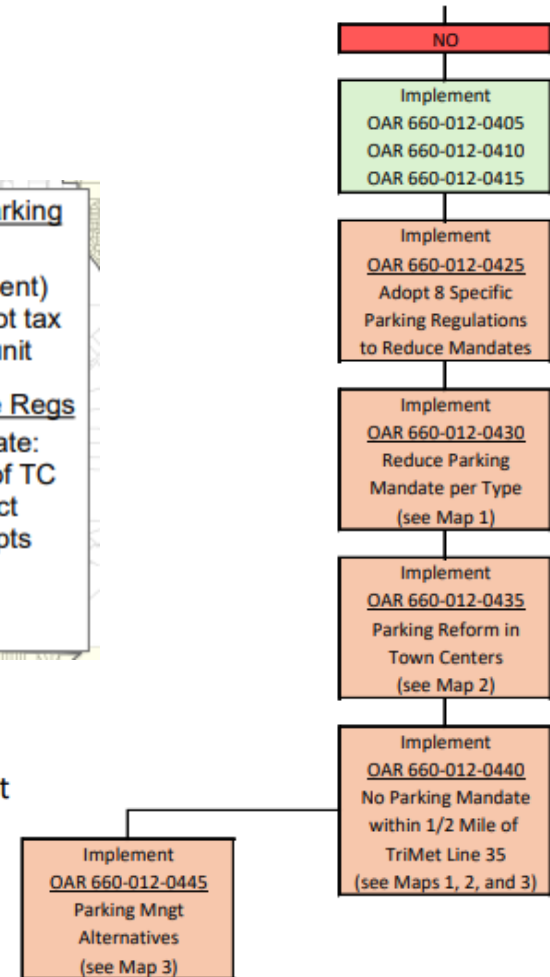
🍃 OAR 66—012-0445



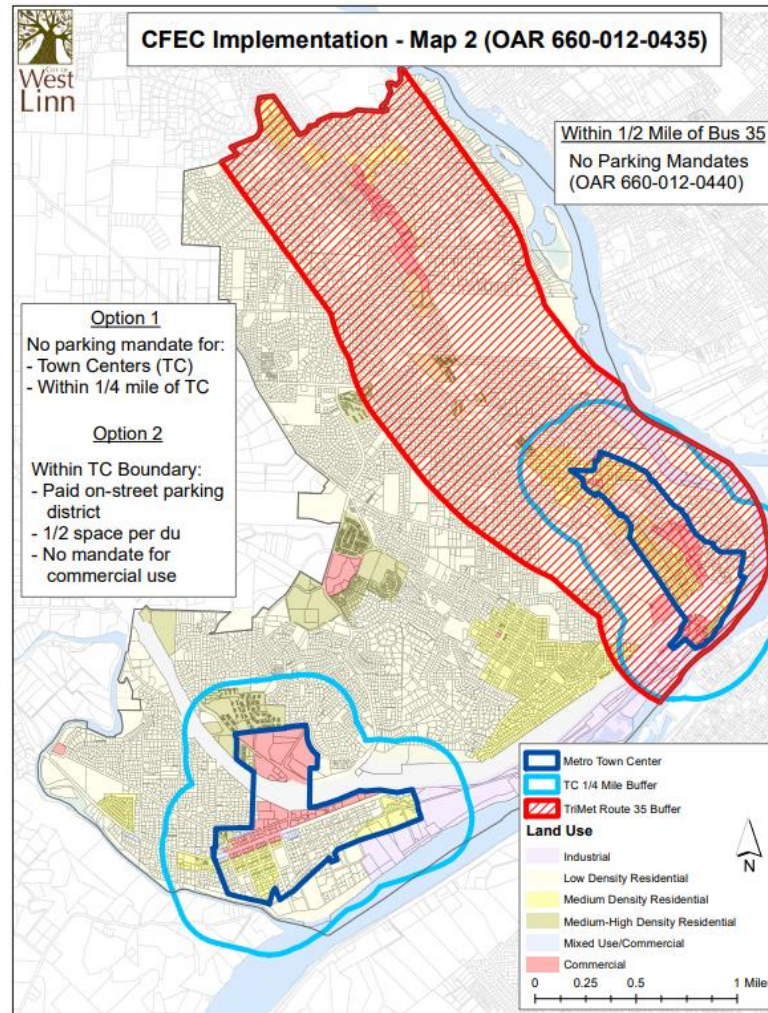
## Percentage of Commercial Properties Affected By No Parking Mandate

Hwy 43 Bus Route + ¼ Mile Buffer (Map 1) = 42 percent

Hwy 43 Bus Route + ¼ Mile Buffer and Town Center + ¼ Mile Buffer (Map 2) = 90 percent

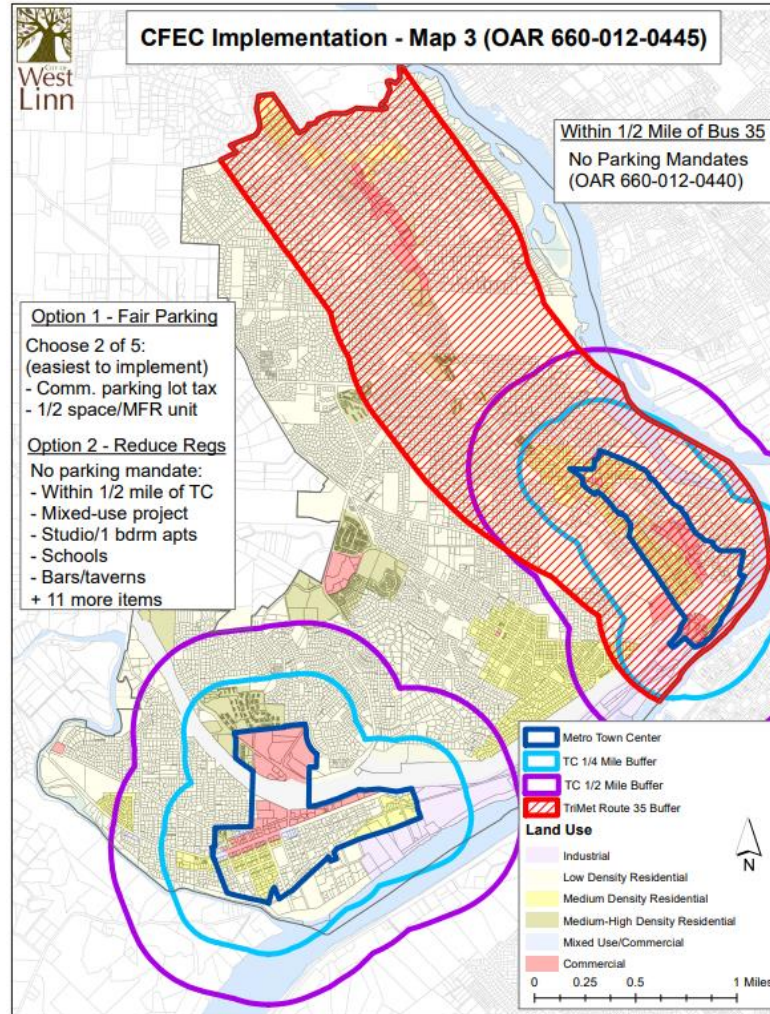


# Parking Reform – Remove All Mandates?





# Parking Reform – Remove All Mandates?

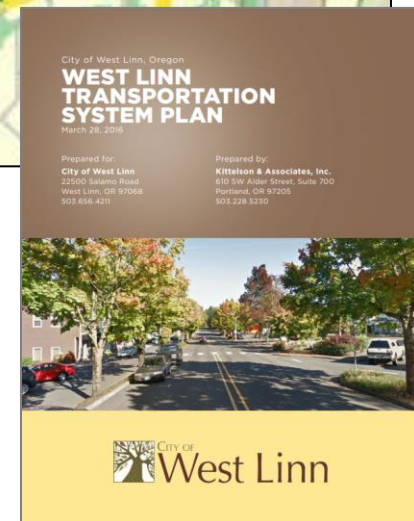




# CFEC Implementation



- Clarifying Questions
  - Policy choices
  - Implementation maps
- Additional Information/Data
  - Pros/cons
  - Buildable land inventory & locations
  - Feedback from developers
  - Community support for paid parking district
- Temperature Check on Repeal All Mandates
  - Best option
  - Generally supportive, but need more information/data
  - Not supportive, but willing to consider
  - Absolutely not





**QUESTIONS OF STAFF?**