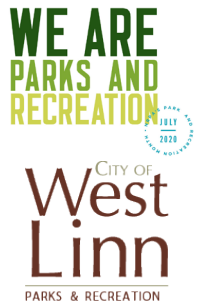


WE ARE PARKS AND RECREATION



Celebrate National Parks & Recreation month with us by getting out and exploring West Linn Parks! No need to pack your bags for summer fun this year. Our Passport will take you to the ends of West Linn, the far reaches of your imagination and to new heights of entertainment. Print out this passport and follow the clues, find the secret location, then use a crayon or pencil to collect a rubbing from the location. Turn this booklet in to win a West Linn Parks and Recreation goodie bag! Passports are due to City Hall by August 31, 2020.



Tanner Creek Park

3456 Parker Rd

Clue: This sign welcomes everyone to the park!

Rubbing Area:



Instructions

You Will Need:

- This passport
- A crayon or pencil
- Creativity!

What to do:

- Print booklet, cut along the dotted lines, and staple together. Visit the parks listed throughout this passport.
- Find the secret location, object, or item being described in the clue.
- Get a "rubbing" of that particular object.
 - Place the page on top of the object.
 - Color over the item to create a print on your page.
- Make sure to fill out your information on the next page, and turn it in to City Hall by August 31. It can be dropped in the Water bill slot! You will be contacted to pick up your prize!

Safety First:

- If the clue takes you to an object that is permanent and many people may touch, please only touch your booklet to the object. do not touch it with your hands.
- If there is another group near the object/place, please wait until they leave, and stay 6 feet apart.
- Wash or sanitize your hands often.

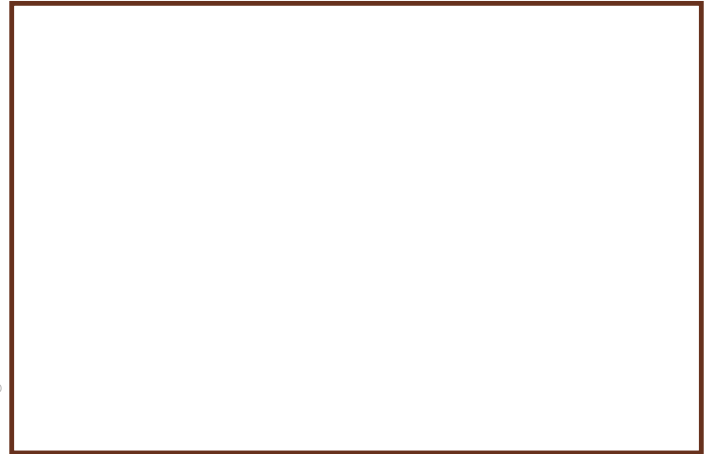


North Willamette Park

1500 Rosemarie Dr

Clue: This park has some pretty neat views from the top of the hill, rather than a rubbing, draw a picture of what you see!

Rubbing Area:

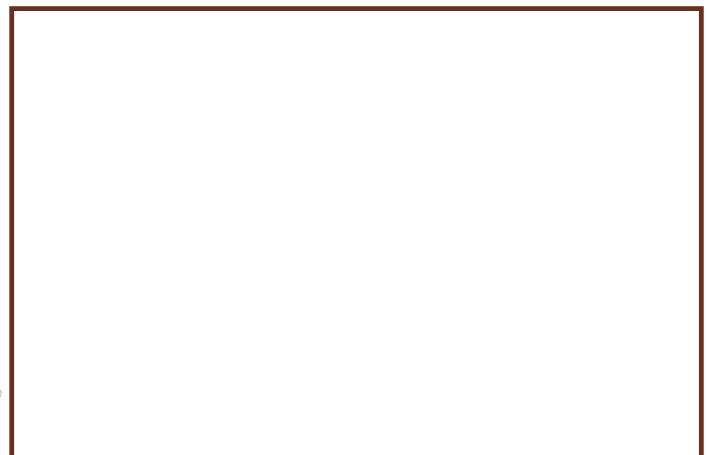


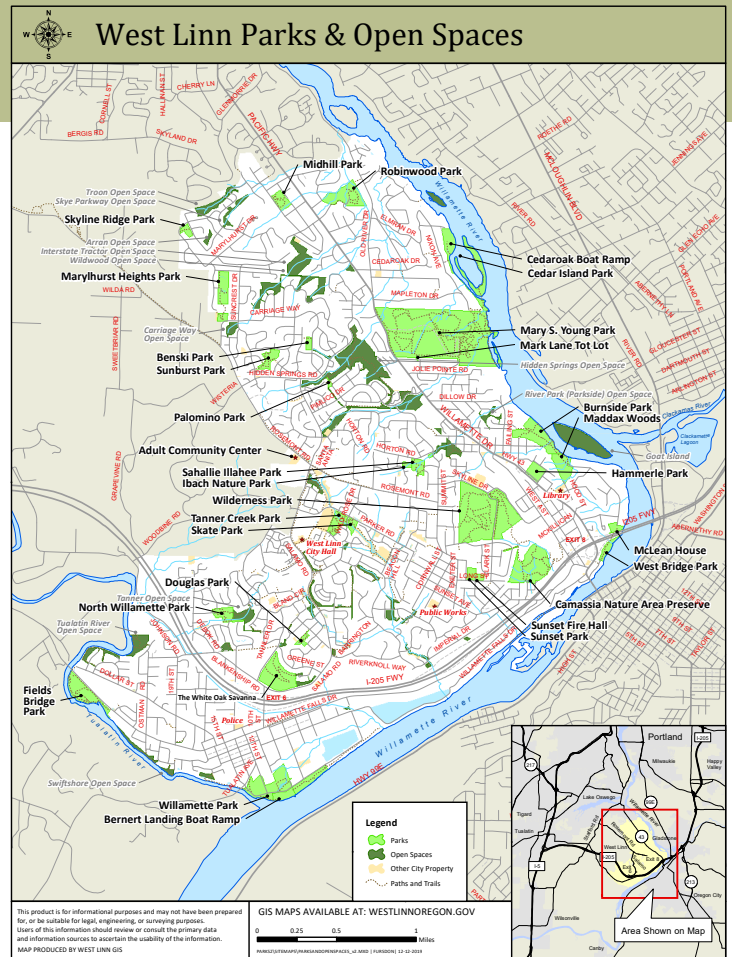
The White Oak Savanna

2425 Tannler Dr

Clue: Benches here have a special emblem. Find this symbol!

Rubbing Area:



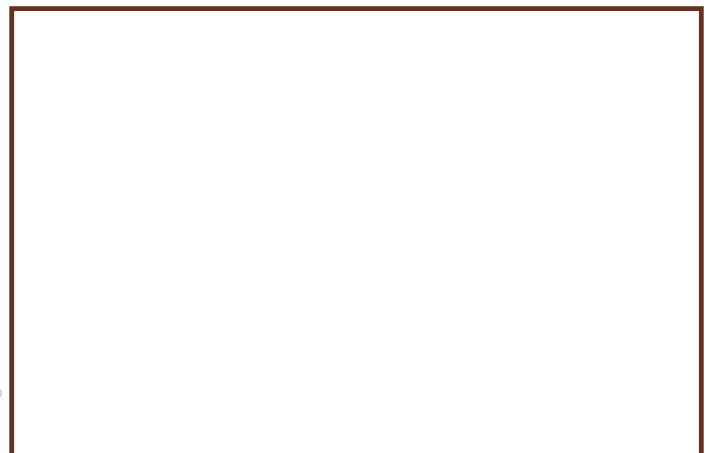


Mary S. Young Park

19900 Willamette Dr

Clue: Mary S. Young has a variety of beautiful trees. Find your favorite tree and collect a rubbing of a leaf from that tree.

Rubbing Area:



Robinwood Park

3600 Fairview Way

Clue: There are many tree stumps in this park, choose your favorite and record the texture!



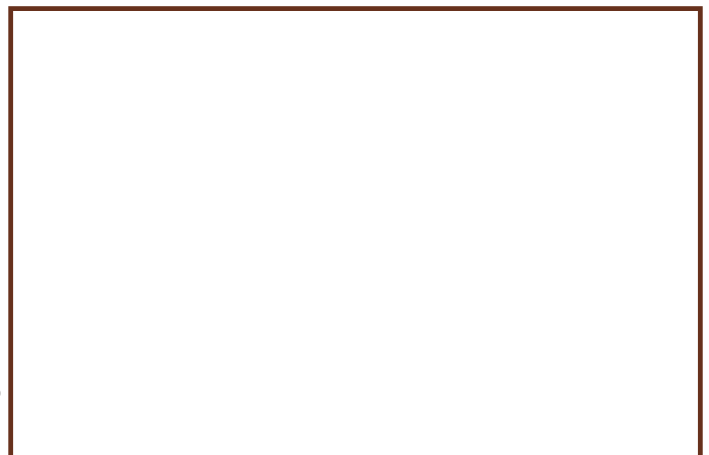
Rubbing Area:



Skyline Ridge Park

1990 Derby St

Clue: Brand new pickle ball courts! Collect a rubbing of the court, or draw a picture of people playing!



Rubbing Area:



First & Last Name: _____

Age: _____ Phone Number: _____

E-mail: _____

Address: _____



Fields Bridge Park

821 Willamette Falls Dr

Clue: This park features a meteorite interpretive trail. Find the most unique sign to collect your texture from.

Rubbing Area:



Willamette Park

1100 12th St

Clue: As an Eagle Scout project, a new trail was built to the main stage. Find this trail and collect your rubbing.

Rubbing Area:



Douglas Park

2278 Rogue Way

Clue: Find something special with a unique texture and record it here.

Rubbing Area:



Midhill Park

18505 Upper Midhill Dr

Clue: This park features rocks and boulders throughout, find the neatest looking rock!

Rubbing Area:



Hammerle Park

1505 Lewis St

Clue: There is a old brick barbeque at this park, find it and use the brick pattern to create a unique rubbing.

Rubbing Area:



Marylhurst Heights Park

1800 Valley View Dr

Clue: This park features a labyrinth, work your way through the labyrinth, and use the stone in the center to collect your next texture!

Rubbing Area:



Palomino Park

6405 Palomino Way

Clue: Take a look at the brand new walkway!
Gather your rubbing from here.

Rubbing Area:



Wilderness Park

22101 Clark St.

Clue: Trees galore! Find the most beautiful tree in
the park, and record the texture below.

Rubbing Area:

