

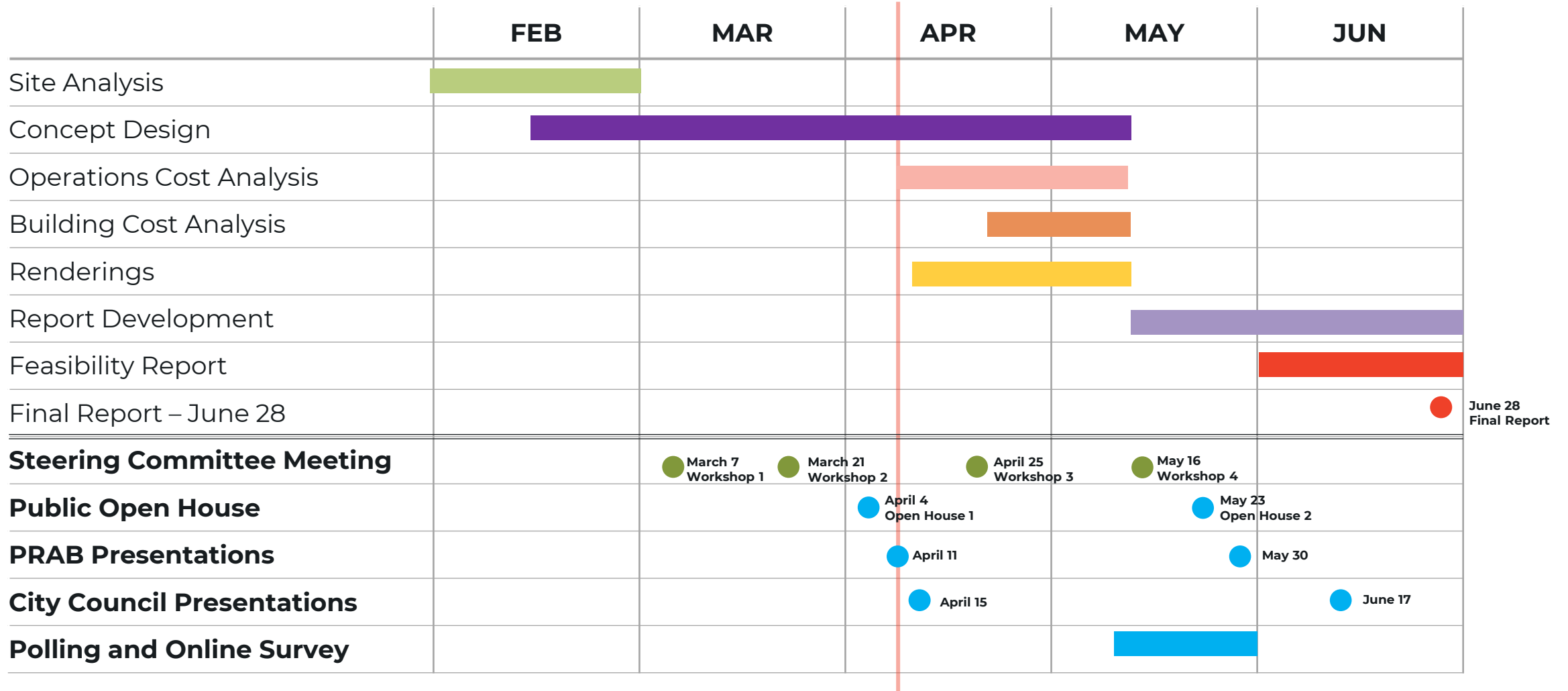


West Linn Community Recreation Center Phase 2

PRAB Update 1
April 11, 2024



Schedule Overview



Agenda

- 01** Project Goals
- 02** Building Program & Site
- 03** Concept Design
- 04** Community Open House Feedback
- 05** Next Steps

Project Goals

01

Project Goals

Multi-generational facility accessible to all and welcoming year-round

Flexible, sustainable, and operationally efficient

Maximize revenue and cost recovery

Plan for future aquatic addition and associated parking

Integrate into the park setting, including programmable outdoor space

Support existing community/recreation amenities

Compelling vision with public support

Building Program & Site

02

Community Activities



Music Performances



Arts/Crafts Classes



Community Meeting



Hang Out Space



Gaming



Continuing Education

Recreation Activities



Cardio Workout



Strength Training



Basketball



Running/Jogging



Yoga/Pilates



Aerobic Exercise

Informal Activities



Classroom



Meeting Room / Birthday Party



Multi-Generational Lounge



Community Room



Outdoor Classroom

Building Program

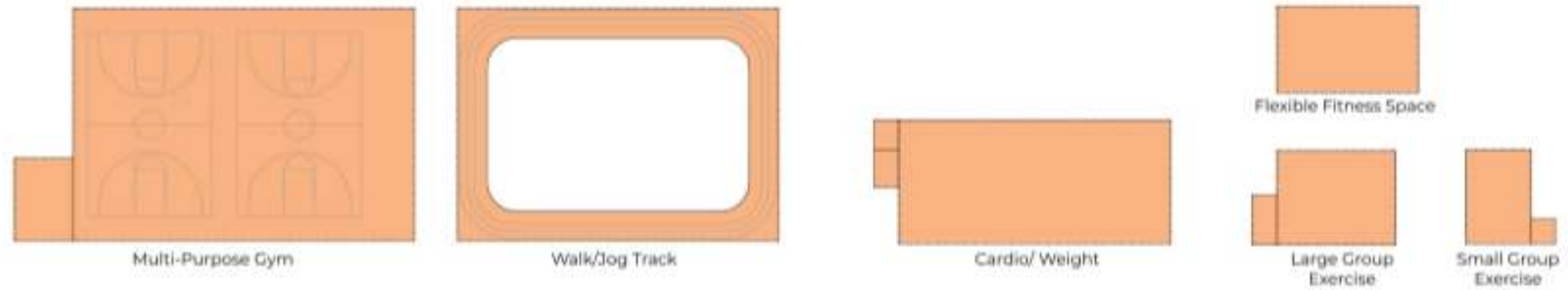
Recreation Space	29,740 sf
Multi-Purpose Gym (2 court 50' x 74')	12,970 sf
Gymnasium Storage	800 sf
Elevated Walk/Jog Track	5600 sf
Cardio/Weight + Storage	5,150 sf
Fitness Assessment/ Health Screen Room	120 sf
Multi-Purpose Large Group Exercise + Storage	2,000 sf
Multi-Purpose Small Group Exercise + Storage	1,100 sf
Flexible Fitness Space	2,000 SF
Community Space	10,380 sf
Community Room (Divisible) + Stage	5,100 sf
Commercial/Teaching Kitchen	800 sf
Multi-Purpose Classroom/Meeting/Art	1,300 sf
Multi-Generational Lounge	1,300 sf
Entrance/Lobby	900 sf
Flexible Party Room	980 sf

Operations	1,920 sf
Reception/Registration	500 sf
Rec Facility Offices (3 @ 120sf)	360 sf
Rec Program Staff Offices (4 @ 80sf)	320 sf
Rec Staff Breakroom	300 sf
Rec Staff Workroom/Copy/Mail	240 sf
Conference Room	200 sf
Support Space	4,320 sf
Concessions/Vending	200 sf
General Locker Rooms	2,000 sf
Universal Changing Rooms (3 @ 90sf) + Vestibule	470 sf
Restrooms - Lobby	700 sf
Restrooms - Unisex (2)	150 sf
Lactation Room	100 sf
Maintenance /Storage	700 sf
Grossing Factor	11,090 sf
TOTAL	57,450 sf

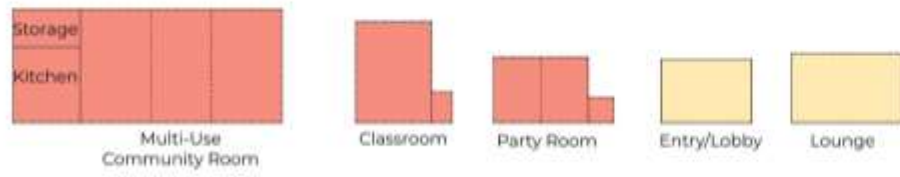
Future Aquatics Expansion	18,540 sf
Grossing Factor	4,635 sf
TOTAL WITH AQUATICS	80,625 sf

BUILDING PROGRAM

Recreation Space: 29,740 sf



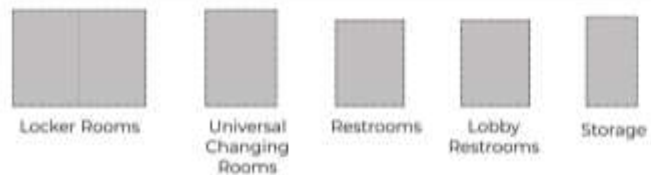
Community Space: 10,380 sf



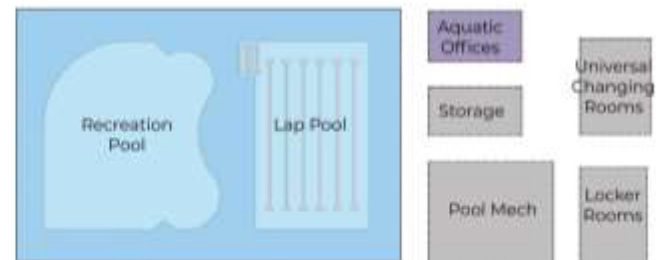
Administration Space: 1,920 sf



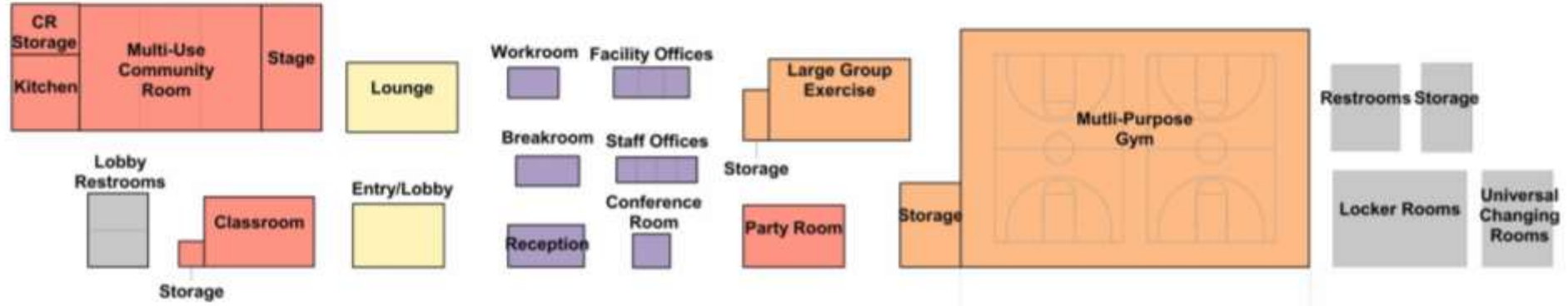
Support Space: 4,320 sf



Future Aquatics: 18,540 sf



Level 01



Level 02



Site Context

Adjacent Amenities:

Tanner Creek riparian zone

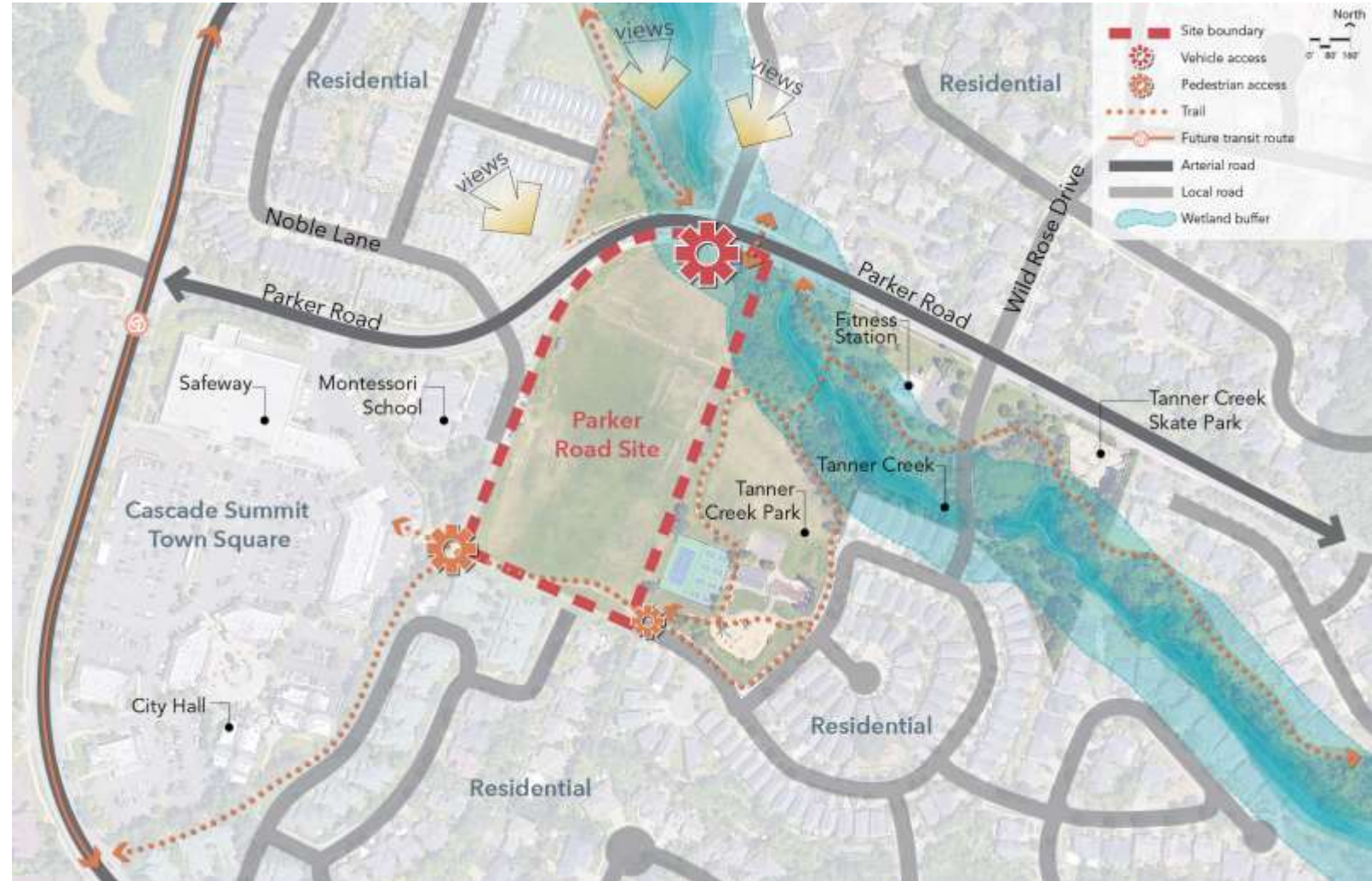
Park infrastructure

Multi-Modal Access:

Trail network

Road frontage

Future Trimet route



Site Analysis

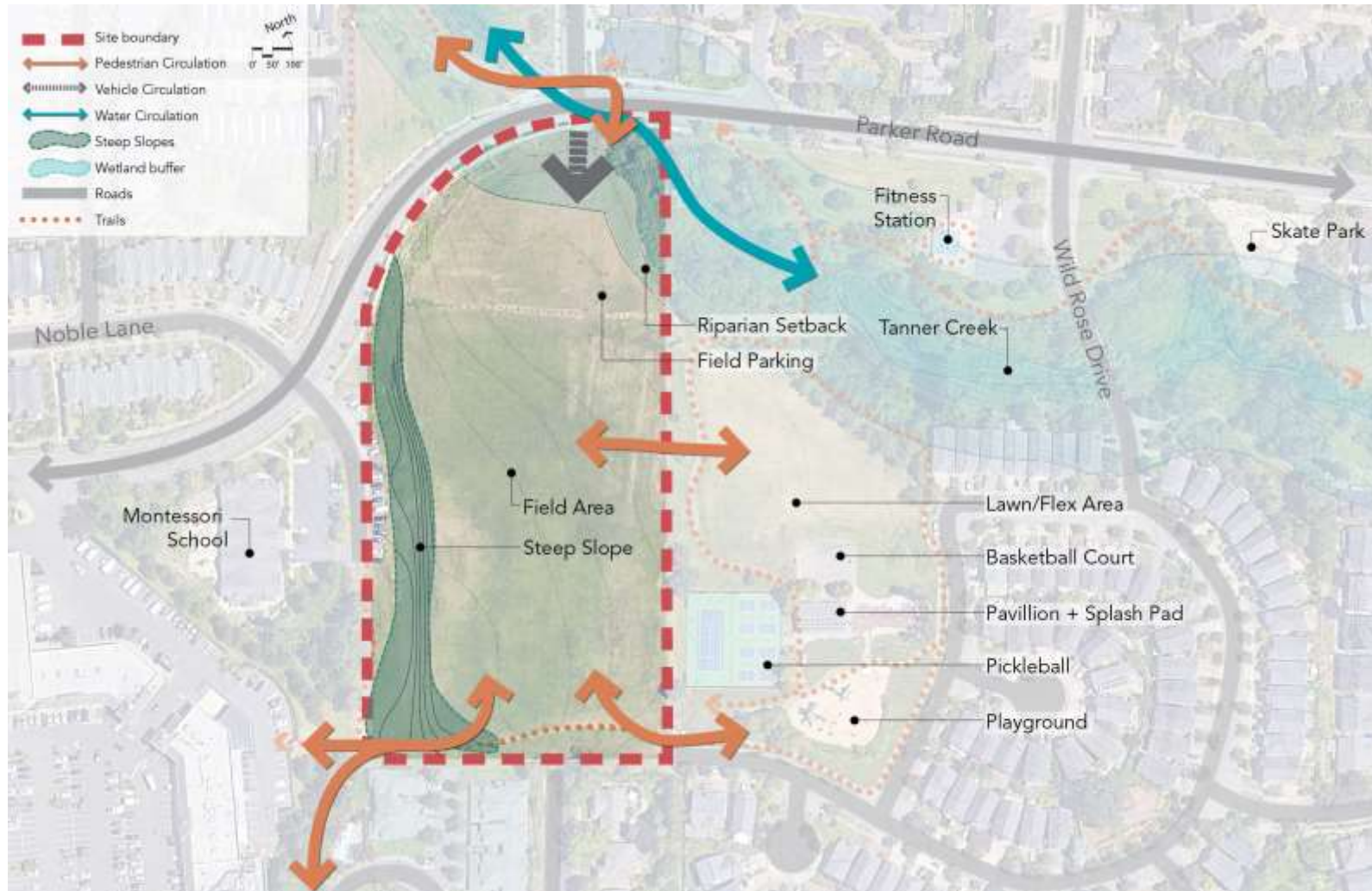
Wide range of park amenities

Steep slopes on westside

Unimproved field

Road Frontage

Views east toward foothills



Existing Site



Natural Systems



Trails



Pathways



Vehicular Access



Pedestrian Access



Views Out & In

Existing Site Amenities



Open Green



Covered Shelter



Fitness



Basketball



Splash Pad



Skatepark

New Site Amenities



Landscaped Parking



Trails and Pathways



Artistic Features



Indoor Outdoor Connections



Hangout Space



Gathering Space

Concept Design

03

Steering Committee Workshop 2



Steering Committee Workshop 2

Common Themes:

- Parking to the West
- Future Pool to South
- Open-up to Park
- Outdoor Spaces
- Food Carts!



Design Concept



- ADMINISTRATION
- COMMONS
- RECREATION
- COMMUNITY
- SUPPORT

Site Plan

Design Concept Pool Addition



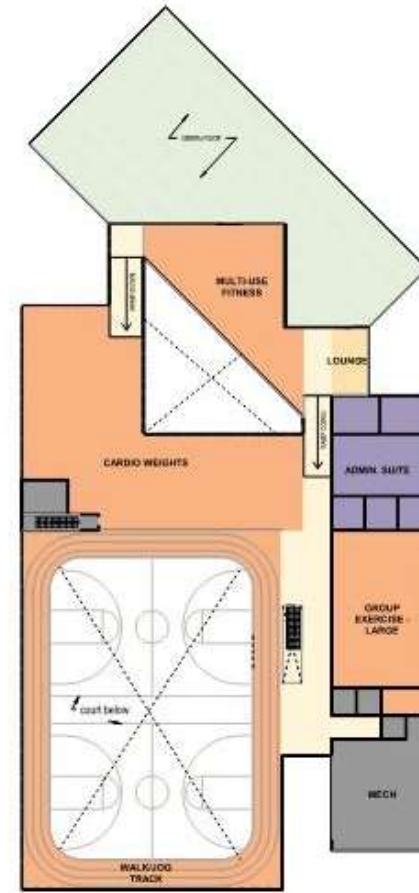
- ADMINISTRATION
- COMMONS
- RECREATION
- COMMUNITY
- SUPPORT

Site Plan

Design Concept



First Floor Plan



Second Floor Plan

- ADMINISTRATION
- COMMONS
- RECREATION
- COMMUNITY
- SUPPORT

Community Open House Feedback

04

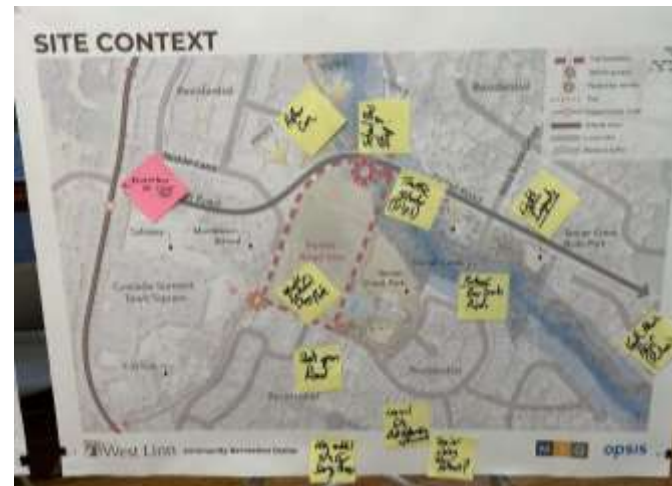
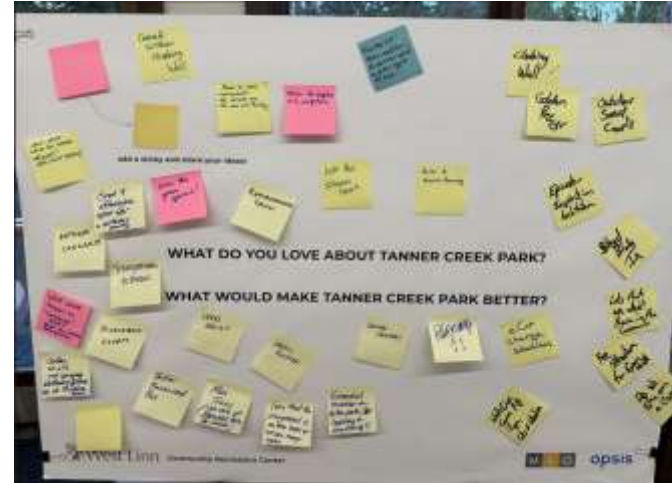
Community Open House



Community Feedback

Key Themes

- High Attendance & Participation
- Support for Concept Design
- Liked Strategy for Aquatic Addition
- Liked Multi-Generational Program
- Liked Community & Education Focus
- Several Suggestions for Add-ons
- Liked Integration into Park
- Good Indoor / Outdoor Connections
- Integration of Sustainable Design



Next Steps

05

Next Steps

- Plan Refinement & 3-D Studies
- Develop Cost Estimate & Operational Cost
- Tour Hidden Creek Community Center
- Polling & Community Survey – May 20 - June 3
- Public Open House 2 – May 23
- PRAB Update 2 – May 30
- City Council Presentation 2 – June 17
- Final Report – June 28



Save the Date – May 23 Public Open House 2

- Share HCCC Tour Feedback
- Review Updated Site Plan
- Review Updated Building Plans
- Exterior & Interior Renderings
- Review Project Cost Estimate
- Review Projected Operational Cost
- Next Steps

