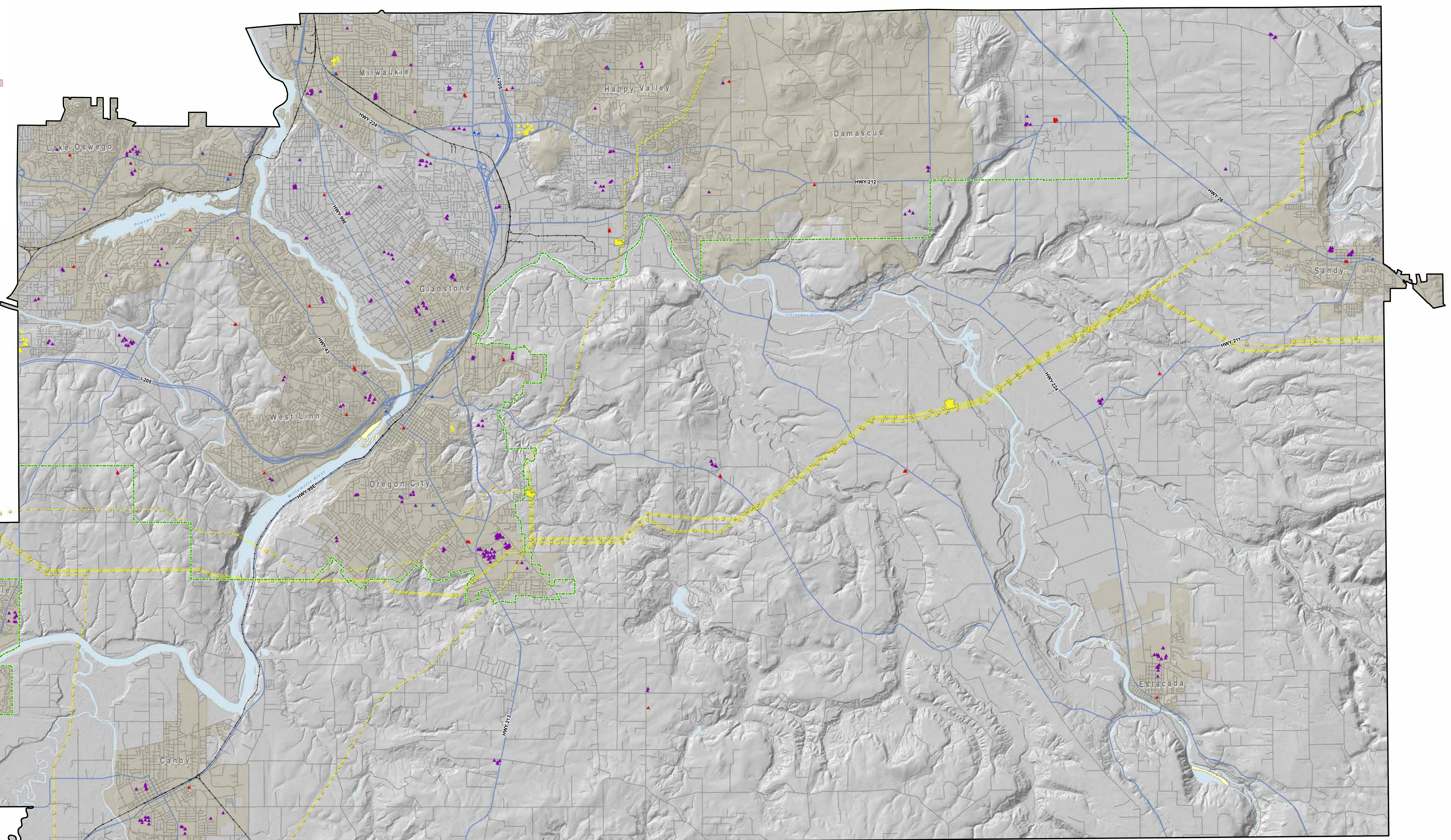
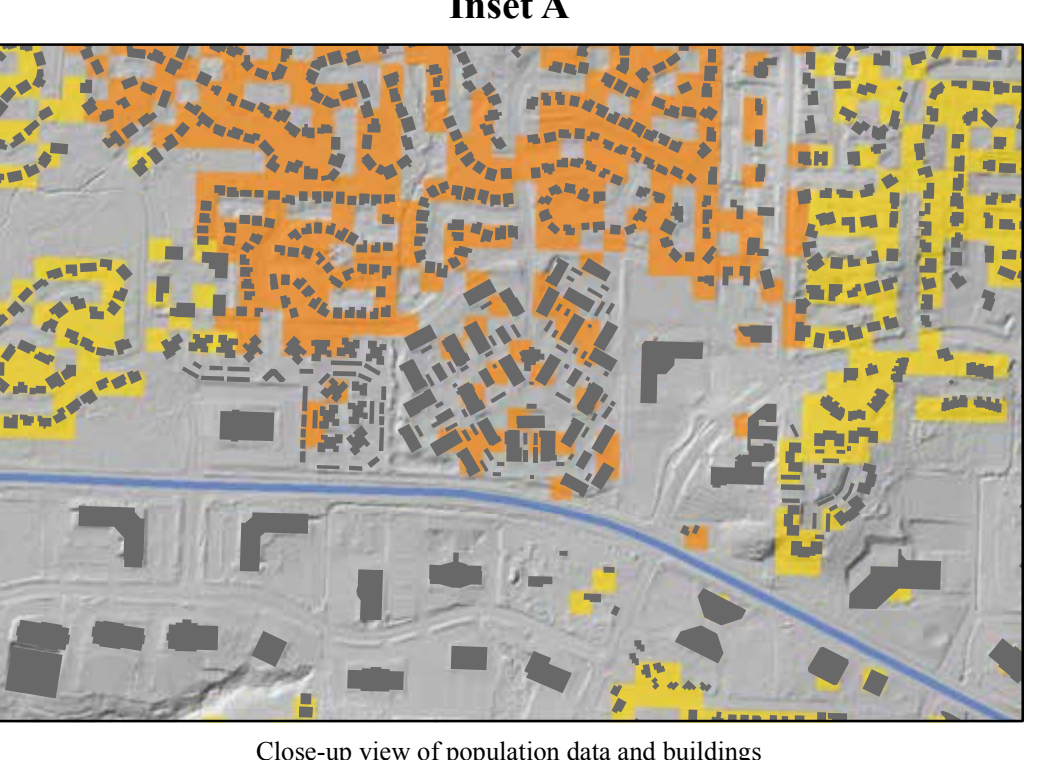
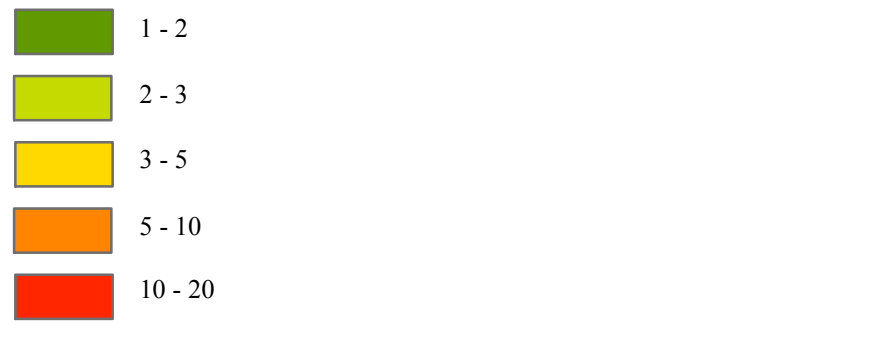


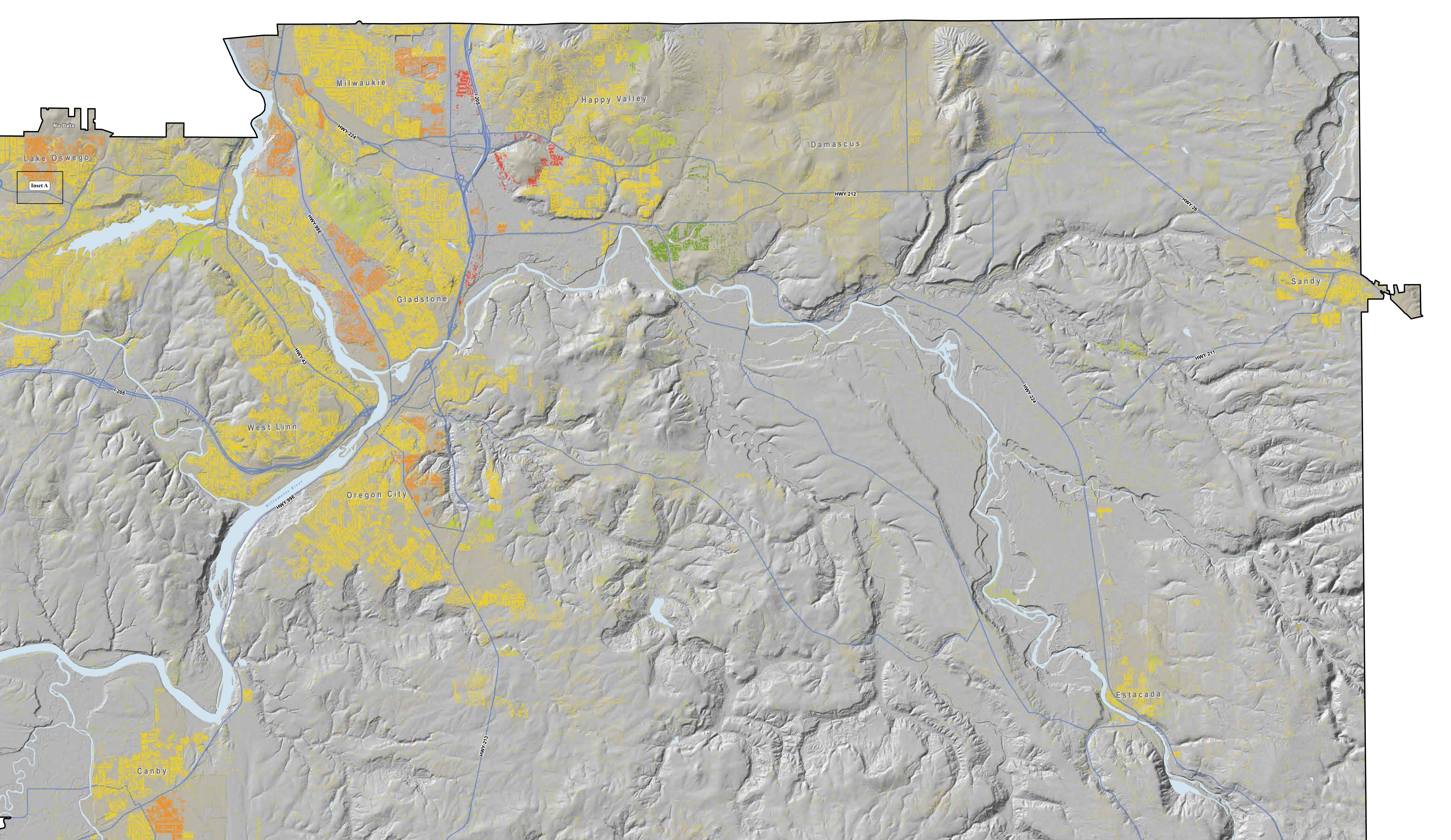
Map of Select Primary Infrastructure and Critical Facilities



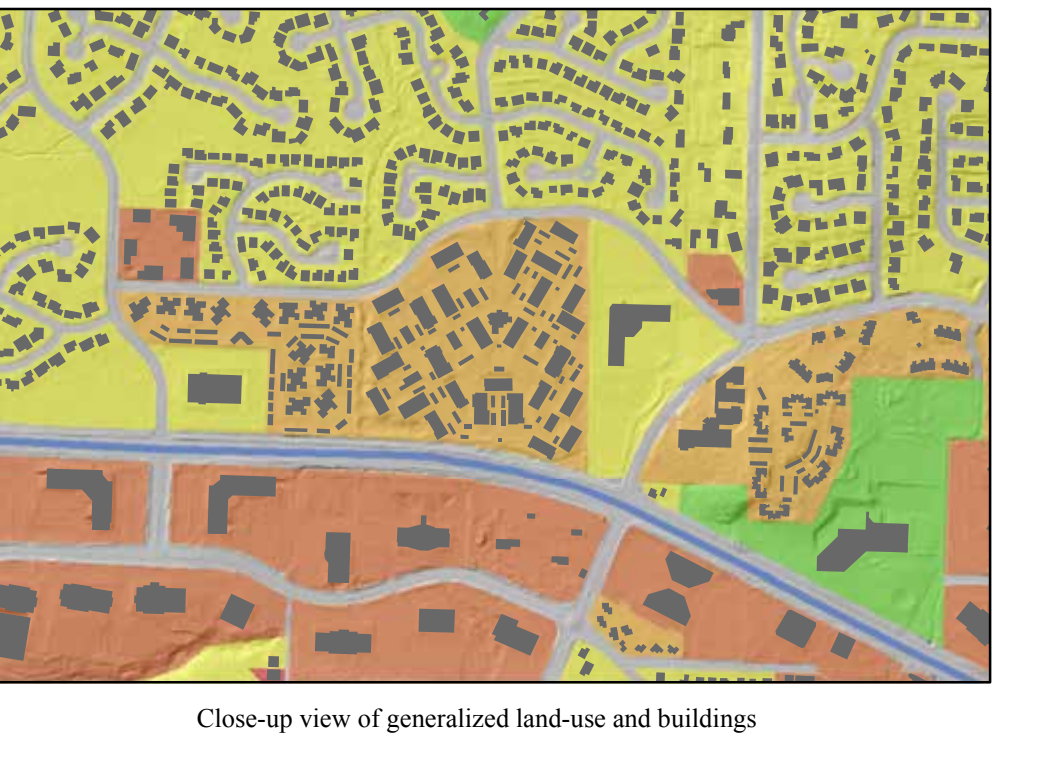
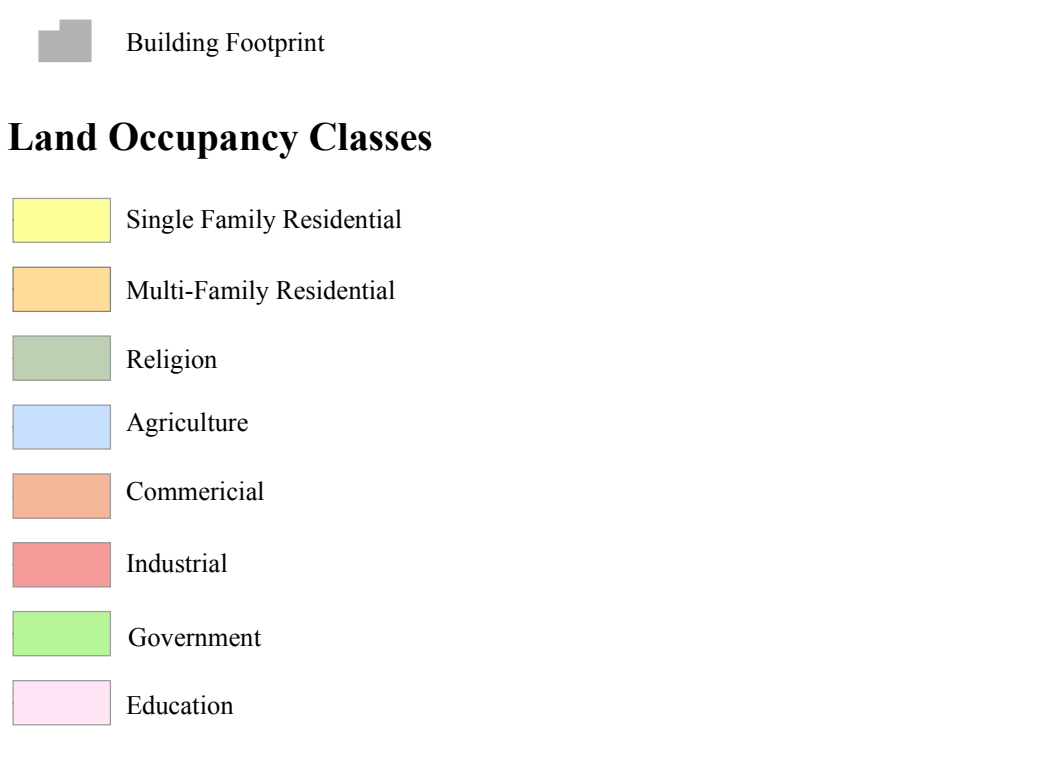
Population Distribution Map
Persons per 20 square meters (320 square feet)



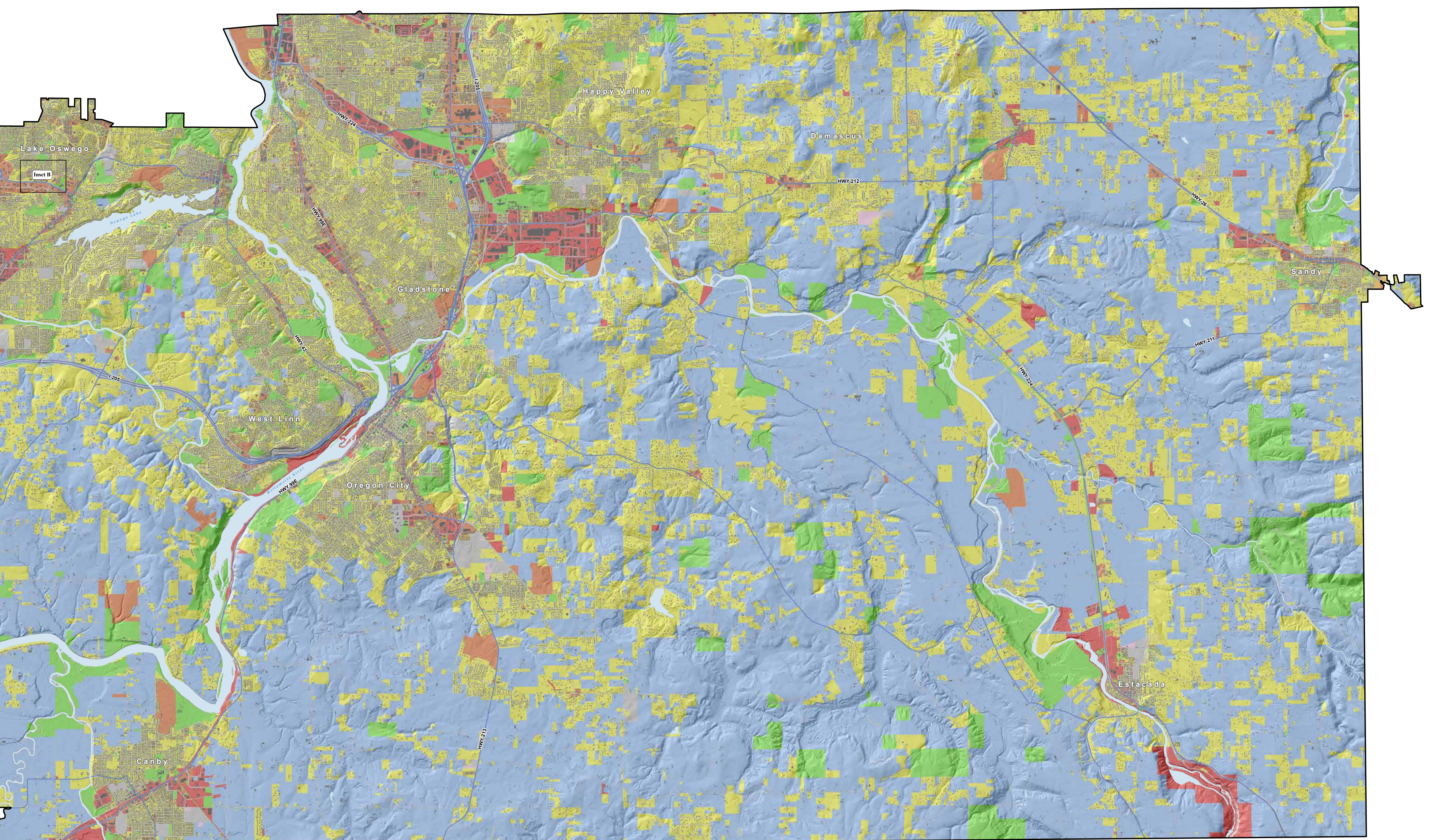
Inset A
Close-up view of population density and buildings



Map of the Generalized Land-Use



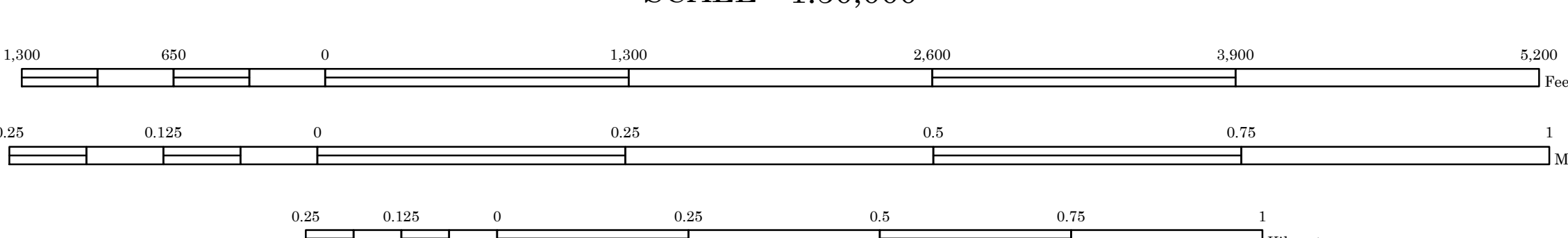
Inset B
Close-up view of generalized land-use and buildings



How may you cite this publication?
Lyles, S.M., Burns, W.J., Jones, C.B., Pickner, S.G., Schuster, K.A., and Mosler, K.F., 2013. Overview Maps of Assets in Northwestern Clackamas County, Oregon. Oregon Department of Geology and Mineral Industries, Open-File Report O-13-08, 45 p. Available at www.oregon.gov/OGI/Pages/default.aspx.
Digital file version: Burns, W.J., Jones, C.B., Pickner, S.G., Schuster, K.A., and Mosler, K.F., 2013. Overview Maps of Assets in Northwestern Clackamas County, Oregon. Oregon Department of Geology and Mineral Industries, Open-File Report O-13-08, 45 p. Available at www.oregon.gov/OGI/Pages/default.aspx.
The DOI was published by U.S. Geological Survey under contract to the State of Oregon.

Prepared by: Ken F. Mosler, Chief Scientist
Author: Ken F. Mosler, Chief Scientist
Copyright by Katherine A. Mickelson and William J. Burns, Oregon Department of Geology and Mineral Industries.
This map also benefited from financial review and comments by the State Lands Commission.

APPROXIMATE MEAN DECOMPOSITION, 2012



SCALE 1:50,000

REFERENCES
FEMA (Federal Emergency Management Administration), 2011. HAZUS-MH 2.1. Multi-Hazard Loss Estimation Methodology: software and technical manual. Washington, DC: U.S. Department of Homeland Security, Federal Emergency Management Agency. <http://www.fema.gov/hazus>.
USGS (United States Geological Survey), 2012. National Land Information System (NLIS) Data. Portland, Oregon. <http://www.usgs.gov/nlis>.
Lyles, S.M., 2007. Statewide seismic hazard assessment: implementation of Oregon 2005 Seismic Risk Reduction Act. Oregon Department of Geology and Mineral Industries, Open-File Report O-07-01, 109 p.
Shaw, R., and Frank, M., 2007. Geospatial information system software to research and data using desktop mapping software. U.S. Geological Survey Techniques and Methods 11-C-7, 37 p.

