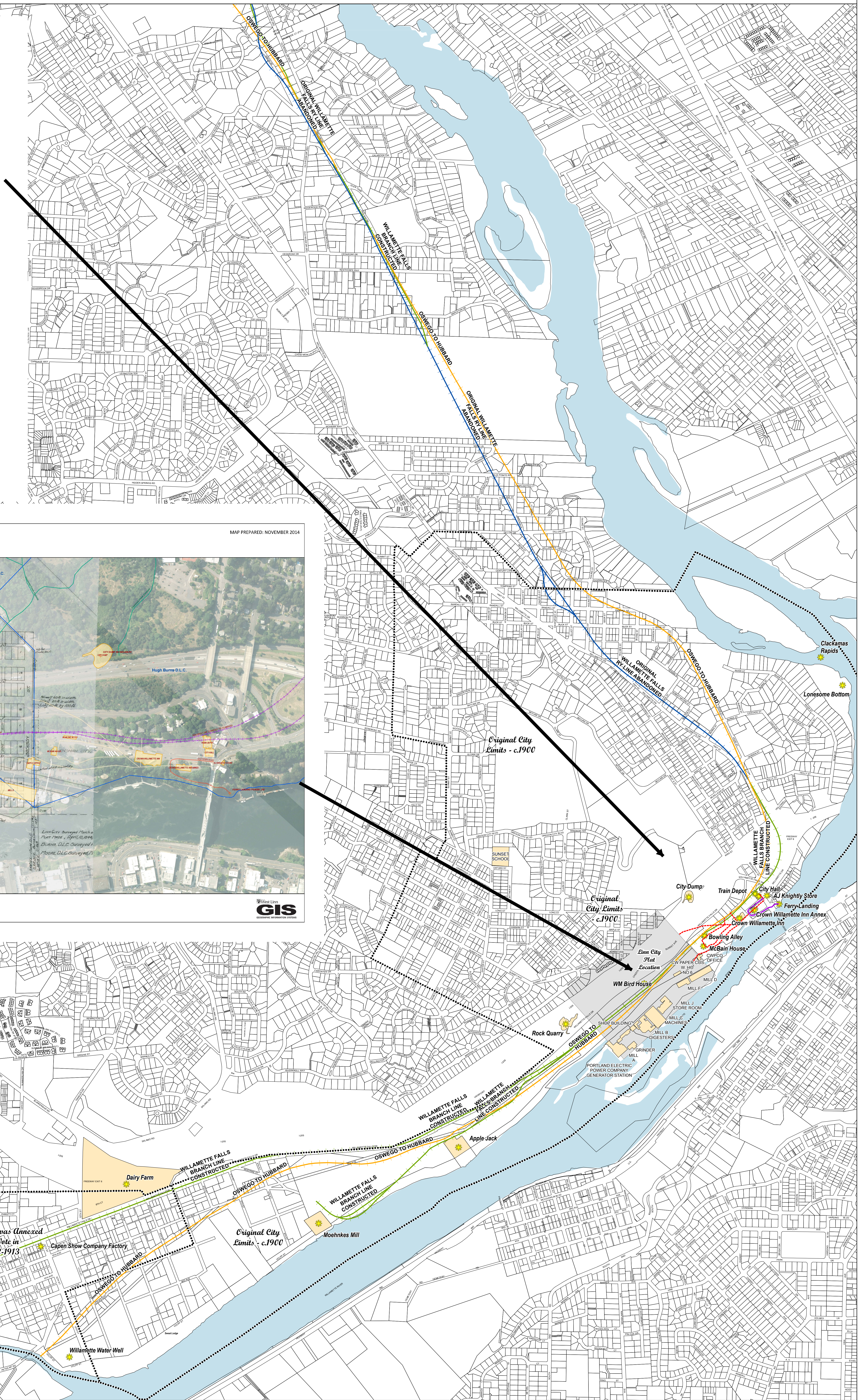
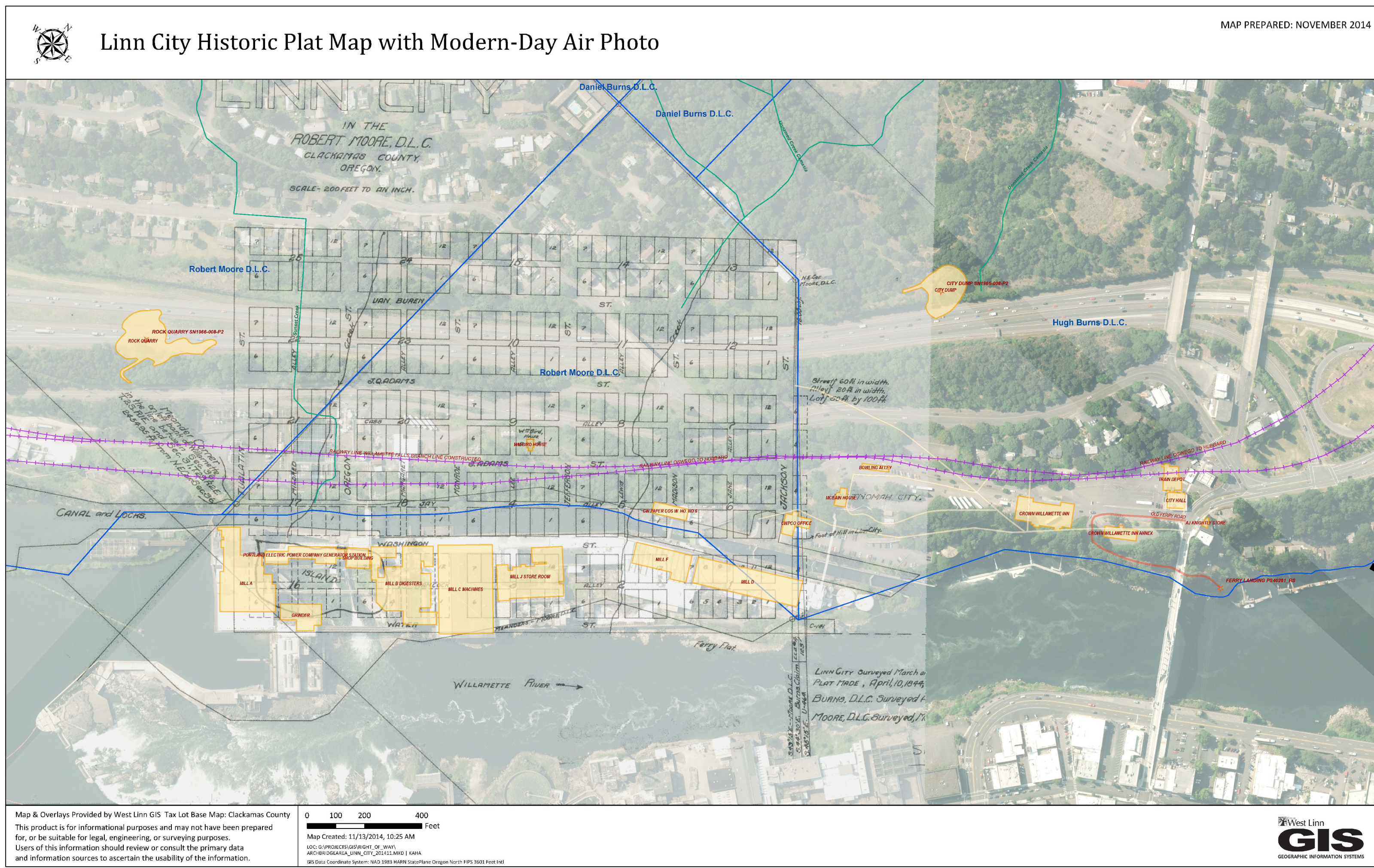
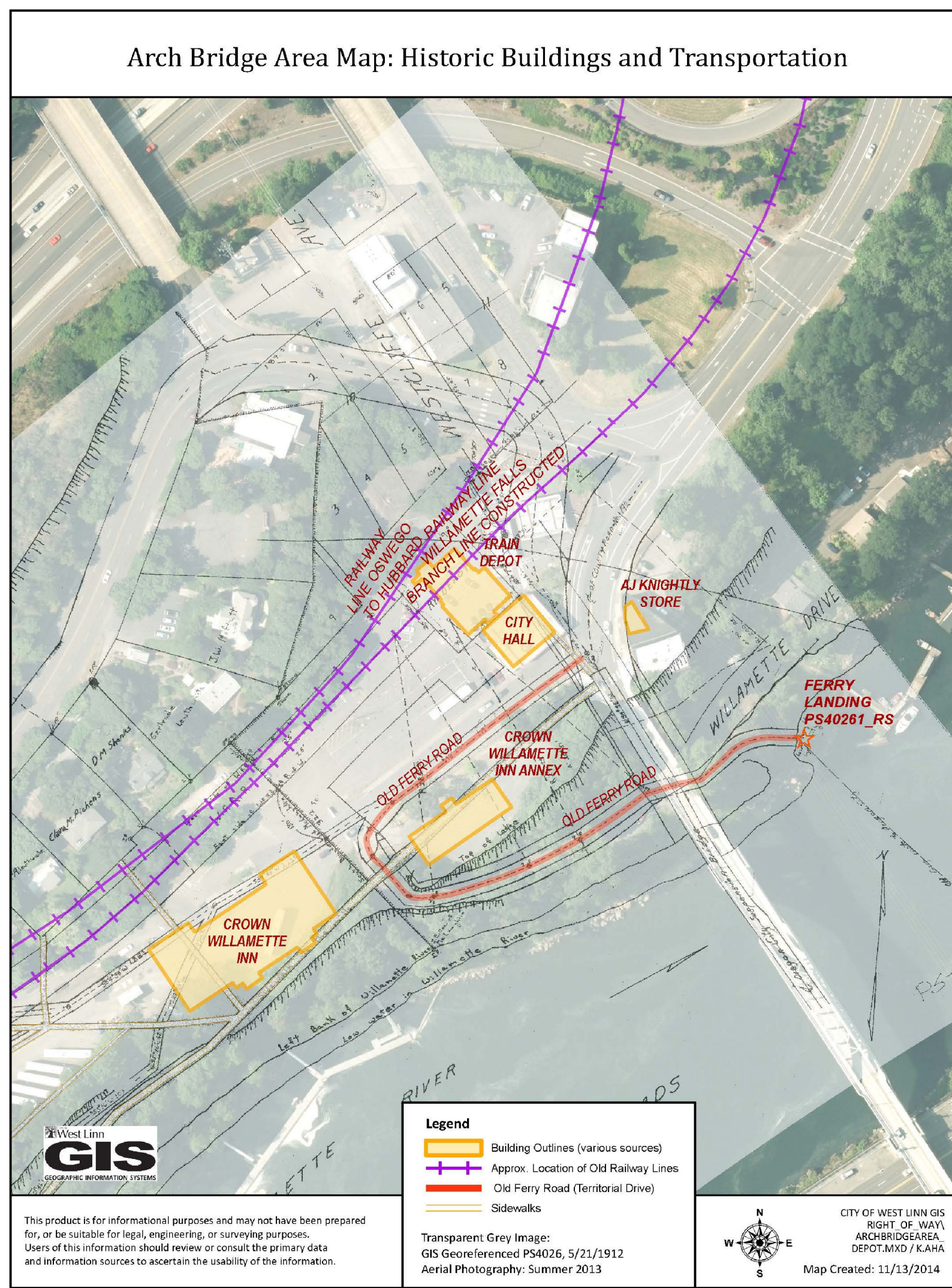
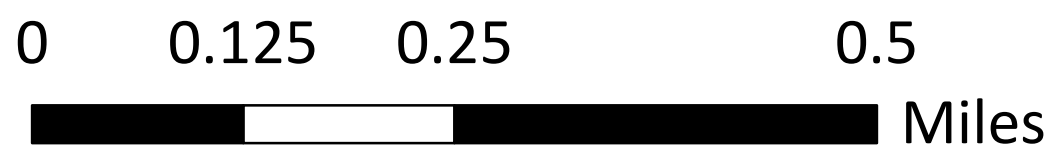


Historic Railways in West Linn



Map & Overlays Provided by West Linn GIS Tax Lot Base Map: Clackamas County

This product is for informational purposes and may not have been prepared for, or be suitable for, legal, engineering, or surveying purposes. Users of this information should review or consult the primary data and information sources to ascertain the usability of the information.



Legend

- Original Willamette Fall RW Line
- Oswego to Hubbard Line
- Willamette Falls Branch Line
- Old Ferry Road
- Sidewalks
- Historic Location
- City Limits 1912-1913
- Historic Location
- Linn City Plat Outline
- Current Day Taxlot Base Map with Street Names

Map Created: 4/11/2018
 Research & Cartography: Kathy Aho, GISP 1998-2018 (1990-2018 GIS)
 RAILROAD | RAILWAY_HISTORIC_2018.MXD
 GIS Data Coordinate System: NAD 1983 HARN StatePlane Oregon North FIPS 3601 Feet Intl

