
**IT'S NOT
THE FAILURE
THAT
MATTERS,
IT'S THE
FAILURE TO
TRY AGAIN.**

**JENN REESE,
PUZZLEHEART**

CONTACT



503-656-7853



1595 Burns Street
West Linn, OR 97068



Amy Newman
Young Teen Librarian
anewman@westlinnoregon.gov



westlinnlibrary.org

 **West Linn Public Library**

YOUNG TEENS

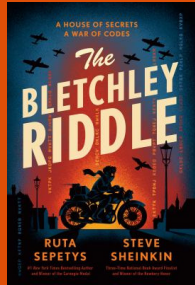
GAME TIME



The Blackthorn Key

Kevin Sands (YT SANDS)

In 1665 London, fourteen-year-old Christopher Rowe, apprentice to an apothecary, and his best friend, Tom, try to uncover the truth behind a mysterious cult, following a trail of puzzles, codes, pranks, and danger toward an unearthly secret with the power to tear the world apart.



The Bletchley Riddle

Ruta Sepetys (YT SEPETYS, R)

Follows siblings Jakob Novis and his quirky younger sister Lizzie as they find themselves at Bletchley Park, the home of WWII codebreakers working to decrypt the Nazi's Enigma cipher, where the two struggle to unravel a mystery surrounding their mother's disappearance

against the backdrop of the Battle of Britain and Hitler's feared invasion.

Book Scavenger

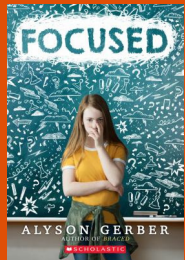
Jennifer Chambliss Bertman (YT BERTMAN)

Just after twelve-year-old Emily and her family move to San Francisco, she teams up with her new friend, James, to follow clues in an odd book they find, hoping to figure out its secrets before the men who attacked Emily's hero, publisher Garrison Griswold, solve the mystery or come after the friends.

Floors

Patrick Carman (YT CARMAN)

10-year-old Leo's future and the fate of the extraordinary Whippet Hotel, where his father is the maintenance man, are at stake when a series of cryptic boxes leads Leo to hidden floors, strange puzzles, and unexpected alliances.



Focused

Alyson Gerber (YT GERBER, A)

Diagnosed with ADHD after years of struggling through school with a mind that has difficulty focusing, Clea uses her love of chess to develop better concentration skills and block out challenging symptoms and distractions.

Frostborn

Lou Anders (YT ANDERS, L)

Destined to take over his family farm in Norrøngard, Karn would rather play the board game Thrones and Bones, until half-human, half frost giantess Thianna appears and they set out on an adventure, chased by a dragon, undead warriors, an evil uncle, and more.



Isle of Ever

Jen Calonita (YT CALONITA, J)

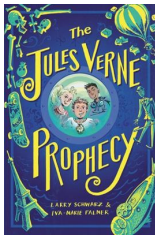
Everly "Benny" Benedict and her mom have always managed to get by, though they're broke most of the time. But all that could change. Benny's just learned she's the sole heir to the vast fortune of a mysterious ancestor from the 1800s! There's a catch, though.

First Benny needs to play—and win—a game: following clues that are more than a century old, she must find her way to the tiny island her ancestor wrote about in her diary—an island that hasn't appeared on maps for hundreds of years. Can she locate it within the two week deadline, or will she lose the fortune forever?

The Goblin's Puzzle

Andrew S. Chilton (YT CHILTON)

A boy, a goblin, a scholar, and a princess join forces to defeat a dragon, outwit a scheming duke, and solve a logic puzzle.



The Jules Verne Prophecy

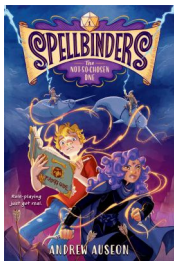
Larry Schwarz (YT SCHWARZ, L)

When a mysterious book by the legendary science-fiction writer falls into their hands, three unlikely friends, using the hidden codes written inside, set off on an epic treasure hunt throughout Paris and soon discover they aren't the only ones searching for the hidden riches.

The Mysterious Benedict Society

Trenton Lee Stewart (YT STEWART, T)

After passing a series of mind-bending tests, four children are selected for a secret mission that requires them to go undercover at the Learning Institute for the Very Enlightened, where the only rule is that there are no rules.

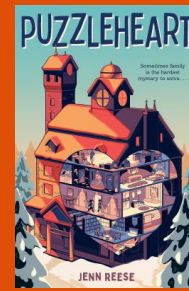


The Not-So-Chosen One

Andrew Auseon (YT AUSEON, A)

Ben doesn't feel chosen by anybody—not by his friends, who haven't kept in touch since he moved after his parents' divorce, or by his mom, who's so busy he barely sees her. He spends all his time living in fantasy worlds and writing extensively planned

adventure campaigns in his role-playing game notebook. So when Niara, a character who could be right out of one of his games, shows up and tells him he's destined to save her realm (like, foretold-by-a-prophecy destined), Ben has two possible moves: tell her the truth or play along.



Puzzleheart

Jenn Reese (YT REESE, J)

A quick trip to Grandma's house unfurls a heart-stopping adventure for tween Perigee and their father when they go to visit the recluse and her Puzzle House. Perigee's father has not been the same recently, and they hope that visiting the house he grew up in will reignite his spark. What Peri can't anticipate is the way the Puzzle House itself will react to the lost son coming home and what lengths it will go to to protect itself when another puzzle is laid before the players.

The Shadow Cipher

Laura Ruby (YT RUBY)

Twins Tess and Theo live in one of the only remaining buildings designed by the Morningstars, visionary twins who built glittering structures in nineteenth century New York, as well as the Cipher, a notorious, citywide puzzle leading to fantastic treasure. Now, in the twenty-first century, Tess and Theo's building has been purchased by a mercenary developer, but Tess grasps at a shred of hope: if they solve the Cipher, they might be able to keep their home.



Wander Lost

Laura Martin (YT MARTIN, L)

Forbidden to play board games by their mother, who suddenly disappears, twins Rhett and Nash learn their family has the ability to enter the world of any game they want—a gift that comes with a high price—and must break their mom's most important rule to save her from a vengeful game character who has taken her hostage.

We Do Not Welcome Our 10-Year-Old Overlord

Garth Nix (YT NIX, G)

It all starts in 1975 Australia: the sun inexplicably vanishes for a split second, and 12-year-old Kim Basalt's know-it-all little sister, Eila, befriends an alien globe by the name of Aster. As weeks progress, Kim notices Eila sneaking out with Aster, causing harm to living entities (red ants and kangaroos). Kim's suspicions of Aster possibly controlling humans are confirmed when his elderly neighbor becomes mind-corrupted. Unable to stand by any longer, Kim and his Dungeons & Dragons friends must create a plan of attack to battle Aster and save Eila before all free will is lost.