



CITY OF
**West
Linn**

City

Manager's

Budget

Message

May 30, 2023



Key themes

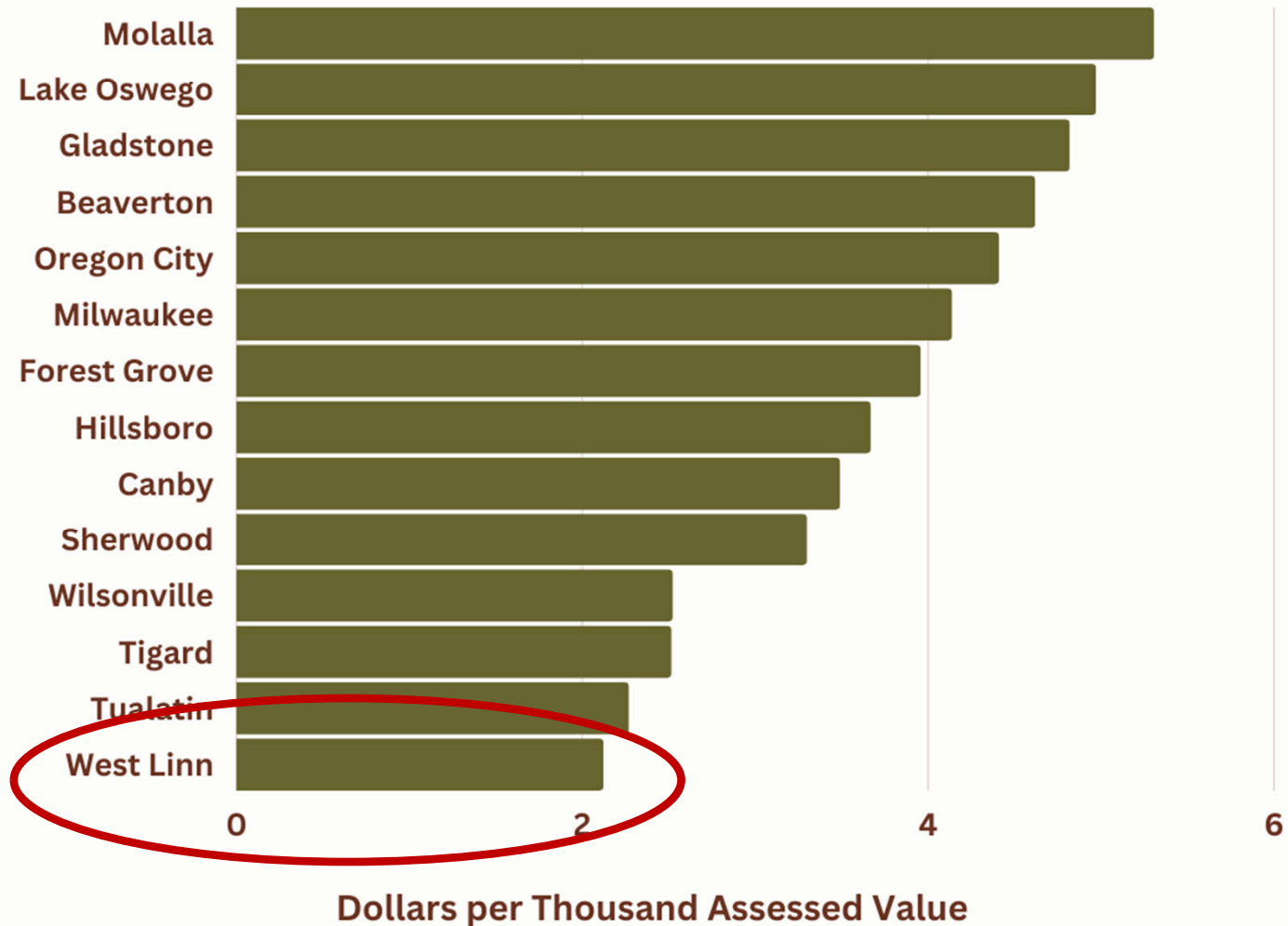


- 🍃 **Organization of Document**
- 🍃 **West Linn Property Taxes**
- 🍃 **Revenues and Costs**
- 🍃 **Not Many Big Changes**
- 🍃 **Funding of Council Priorities**
- 🍃 **Major Capital Projects**
- 🍃 **Why It Matters**

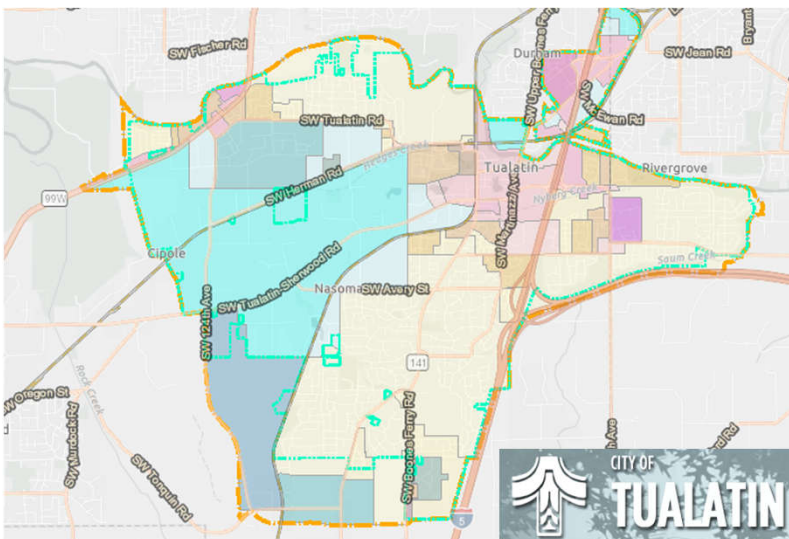
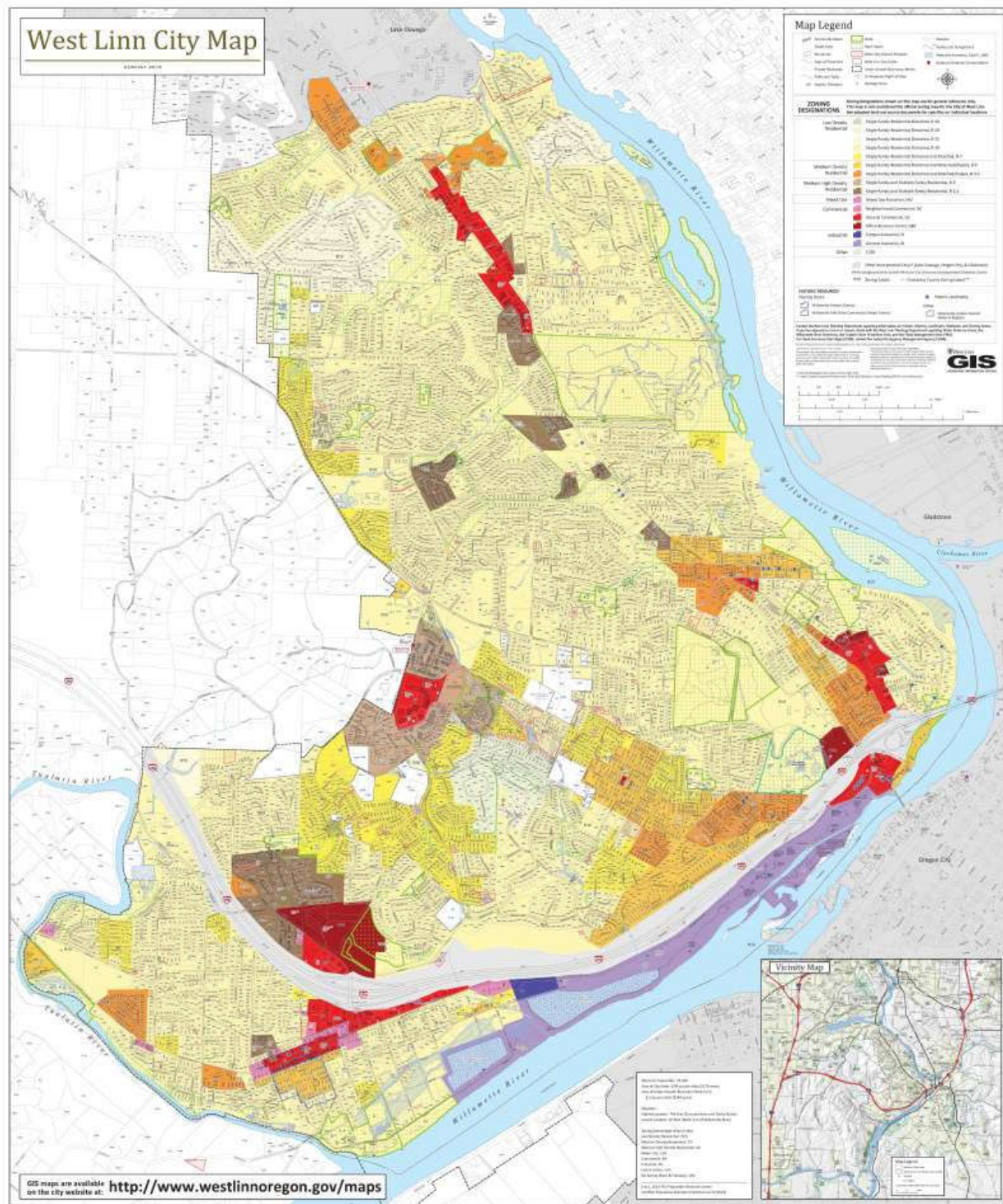
Property Taxes in West Linn

Permanent Property Tax Rate Comparison*

**For general illustrative purposes. Graph does not fully account for differences in services (such as Fire/EMS).*



Property Taxes in West Linn





The Bottom Line

COMPARING CITY PROPERTY TAX RATES IN CLACKAMAS COUNTY (CC)

City	Population	Assessed Value (AV) in Clackamas County	Percentage of AV from Industrial and Commercial Prop.	City Permanent Property tax rate	City Total Tax Rate w/o Fire *	CC only Estimated Tax Revenue For City (without fire)	PT Revenue Per Capita
Lake Oswego	40,411	\$ 8.7B	13%	4.97	2.48	\$ 21.7M	\$ 538
Milwaukie	20,946	\$ 2.5B	28%	4.14	4.14	\$ 10.2M	\$ 488
Oregon City	37,411	\$ 3.8B	15%	4.41	4.41	\$ 17M	\$ 453
Wilsonville	26,519	\$ 4.2B	29%	2.52	2.52	\$ 10.5M	\$ 396
West Linn	27,420	\$ 4.3B	6%	2.12	2.12	\$ 9.1M	\$ 333
Gladstone	11,978	\$ 1.1B	15%	4.82	3.32	\$ 3.7M	\$ 309

* Note: The Cities of West Linn, Wilsonville, Milwaukie, and Oregon City all have separate fire districts with their own levy. The fire levy is \$2.1127 for West Linn and Willsonville and \$2.4839 for Milwaukie and Oregon City. Since Lake Oswego and Gladstone fire rate is included in their city rate, an assumed rate of \$2.4839 was used to attempt to fairly compare service levels.

Revenues and Costs

- Construction Contracts
- Materials/Supplies
- Labor & Benefits
- Utility Rates
- Fees and Charges
- Property Tax
- State Revenues





Few Major Changes

-
- City Attorney Department
 - Revenue Specialist



2023 West Linn City Council Priorities

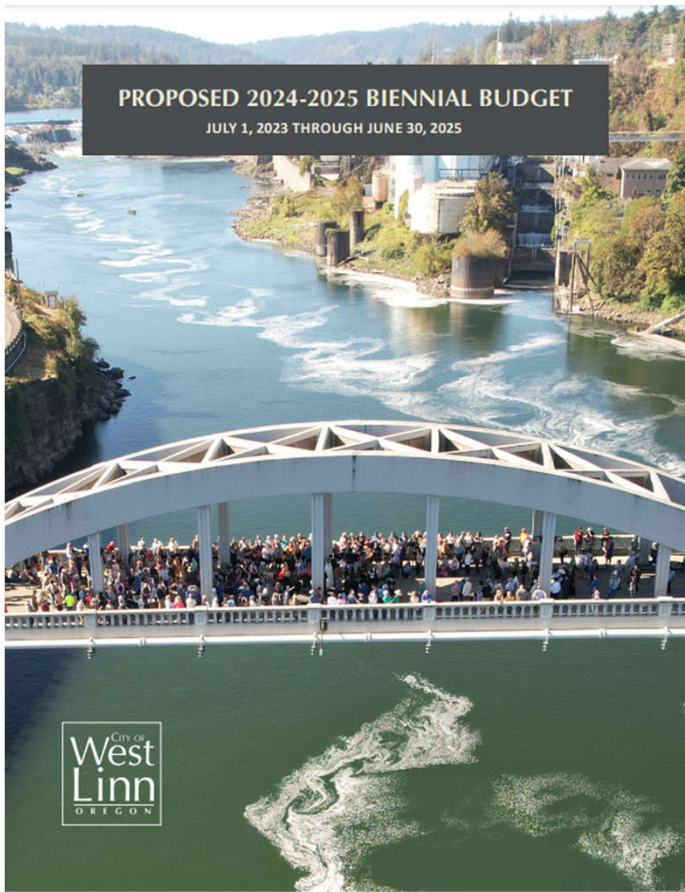
- ❖ **Oppose I-205 Tolling**
- ❖ **Advance Indoor Recreation Center***
- ❖ **Appoint Police Review and Recommend Committee***
- ❖ **Define & Fund Water System Capital Needs***
- ❖ **Begin West Linn Waterfront Vision Planning***
- ❖ **Begin Highway 43 Vision Planning***
- ❖ **Support City Sustainability Initiatives***
- ❖ **Explore Transit Services**

Major Capital Construction

- Historic City Hall
- 10th/Salamo
- Willamette Falls Dr.
- Highway 43/Marylhurst Dr
- Non-motorized boat launch
@ Willamette Park
- City Operations Facility



Why It Matters





Questions...and then on to department presentations

