



Memorandum

Date: February 8, 2019

To: West Linn City Council, City Staff and Readers

From: Eileen Stein, City Manager

Subject: City Manager's Weekly Report – February 8, 2019

Schedule Items

- The February meeting schedule is still being worked out due to the weather-related cancellation of the February 4 special meeting (and potentially February 11th also.) We are eyeing the possibility of needing a make-up meeting on February 25th.
- 2019 State of the City. The Mayor's State of the City Address is scheduled for February 28 at 6:00 p.m. at the Library Community Room. Save the date!

Information Items

- Goal Setting Follow Up. During the January 17-18 goal setting session, there was discussion about the potential for a third session. Given how the February meeting schedule is turning out due to weather, it seems prudent to schedule a third session to finalize language for the goals and discuss the proposed changes to the Council Rules. This might also be the subject of a meeting on February 25th. I have been in touch with facilitator Sam Imperati about this possibility.
- Budget Update. We are beginning our communication process with employees about the City's financial status and preparing for the upcoming budget. This week we offered to employees a voluntary early attrition program. This program offers employees a severance package for those who apply and are approved. This program provides long term payroll savings. Meanwhile, we have begun identifying potential service cuts and revenue enhancements that will be considered in preparing the Recommended Budget for Biennium 2020-21. As you begin thinking about the budget, if you have questions about or ideas for service reductions or new revenue sources, please let me know.
- West Linn-Wilsonville School District "Bond Summit". Last week I met with Dr. Kathy Ludwig and her facilities staff to hear plans about this event, scheduled for **February 23rd from 9:00 a.m. to 1:00 p.m. at Meridian Middle School** in Wilsonville. Dr. Ludwig reported the School Board has adopted a new Long Range Facilities Plan and is now preparing its Capital Improvement Plan to identify funding for the projects in the new master plan. Total estimated need is \$207 million. The plan identifies \$8.3 million in need for stadium and parking improvements at West Linn High School. The "Bond Summit" is the opportunity for the School Board to hear from the public about which projects should be ultimately incorporated into a \$206 million bond request to put before the voters in November. See the attached information about the project categories. Please plan to attend!

- I-205/Abernethy Bridge Update. This week, the Clackamas Cities Coordinating Council (C4) put the finishing touches on a letter advocating for funding the widening project. See the attached letter. The signatories to the letter would include Clackamas County, Washington County, Multnomah County, Metro, Association of Oregon Counties, League of Oregon Cities, Metro Mayors Consortium, Oregon Trucking Association, AAA, Port of Portland, Clackamas County Business Alliance, Westside Economic Alliance, and cities in the Portland metro region. This will be a very strong showing of support for the City of West Linn's legislation. In addition, we received very encouraging news this week from ODOT Region 1 Manager, Rian Windsheimer, about ODOT's desire to collaborate with the City on the Willamette Falls Drive project, the I-205 bike trail project, and how to link it to a larger regional bikeway system.
- OGEC Training. As you know, the Council training with Patty Mulvihill, LOC General Counsel, was cancelled this week due to weather. We will find a replacement date, but are also still working with OGEC training staff to schedule the training on executive sessions. You may recall, some Council members requested OGEC staff be the primary source of information on this topic.

That's it for this week.

Eileen



West Linn-Wilsonville School District 3Jt

Meeting with City of West Linn
January 29, 2019

Attending:

I. Long Range Plan – Adopted 1/28/2019

II. Capital Improvement Plan – List of Potential Projects (see handout)

- a. Safe & Welcoming Schools
- b. Expanding Opportunities and Addressing Capacity at Secondary Level
- c. Increasing Access to the Arts – WHS Auditorium Addition
- d. West Linn High School Parking and Stadium Improvements
- e. Addressing Growth at Primary Level – New Wilsonville Primary School
- f. Learning with Technology
- g. District-Wide Improvements

III. Next Steps:

- a. WLWV Long Range Plan Bond Summit: February 23rd, 2019
- b. Community Polling and Surveys (Wright Public Affairs) – March/April
- c. Board Decision about Possible Bond on Nov. Ballot - June

IV. Capital Projects in West Linn – Estimated Timelines – Broad Discussion

- a. New Construction for MS on Dollar Street
- b. Stadium Expansion
- c. Parking Expansion

CAPITAL PROJECTS

The Long Range Planning Committee and operations staff utilized these criteria to bring forward projects that were not funded previously, add new projects, as well as address facilities needs for the next five years.

2019 Capital Improvement List:

Safe & Welcoming Schools	\$4,500,000
Expanding Opportunities and Addressing Capacity at Secondary Level	\$88,000,000
Increasing Access to the Arts - Wilsonville High School Auditorium Addition	\$25,000,000
West Linn High School Parking and Stadium Improvements	\$8,300,000
Addressing Growth at Primary Level - New Wilsonville Primary School	\$39,000,000
Learning With Technology	\$18,000,000
District-Wide Improvements	\$24,000,000
 Total Estimated Value:	 \$206,800,000



SAFE AND WELCOMING SCHOOLS

<p>Location</p>	<p>All District Locations</p>
<p>Project Summary</p>	<p>Providing the best education possible for our students also means creating a safe and secure environment for both students and staff. Over the past several years there has been a heightened awareness regarding school safety and security at the national, state and local levels. West Linn-Wilsonville School District is committed to creating and maintaining safe, secure facilities for students, staff and patrons as a partnership with our community, neighboring school districts, area law enforcement and emergency responders.</p> <p>Under the leadership of the District Safety Leadership Team, and in cooperation with the school board, patrons, building principals, site emergency response teams and local law enforcement, our schools have been assessed for safety-related corrections. The following themes have been identified to provide specific improvements for each unique school facility.</p> <ul style="list-style-type: none"> • Secure School Entrances • Classroom Lockdown Hardware • Shelter-in-Place Curtains • Intrusion Limiting Glass <p>These safety upgrades follow safety work the district began following the 2014 Capital Bond. Over the past several years, the district has renovated secure school entrances at five of its 16 schools, implemented a robust emergency radio communication system district-wide, added exterior security measures at select school grounds, established video surveillance at all schools, and installed lighting upgrades among other safety work.</p>
<p>Conceptual estimate: \$4.5 million</p>	



EXPANDING OPPORTUNITIES AND ADDRESSING CAPACITY AT SECONDARY LEVEL

<p>Location</p>	<p>Current Athey Creek Middle School Site and Dollar Street Property</p>
<p>Project Summary</p>	<p>Currently, the District has three high schools – West Linn High School, Wilsonville High School, and Arts and Technology High School, a smaller option high school that typically has enrollment around 100 students. Enrollment projections show that West Linn High School could eclipse 2,000 students while Wilsonville High School will approach 1,700 students by 2028. Concurrently, the lease for Arts and Technology High School expires in 2022 and new location will be needed.</p> <p>The concept for this project is to expand the enrollment of the Arts and Technology High School from its current 100 students to approximately 500 students. The new size would still maintain a smaller feel than the other high schools; and, the increased enrollment could allow for expanded courses and programs to be offered at the school. The plan is to relocate this option high school to the current Athey Creek Middle School building site.</p> <p>An administration suite is proposed to be constructed at the front of the school to assure safety and security for students similar to other schools in the District. The existing area that houses the current administration suite will be converted to learning space. Price includes all construction costs; as well as instructional technology; and furniture, fixtures and equipment necessary to function at par with any school in the district. Renovating this existing building for the Arts and Technology High School does not involve a boundary change for middle or high school.</p> <p>Creating a high school out of the existing Athey Creek Middle School would require relocation of the current middle school. The new middle school facility will be designed on the 21-acre District-owned Dollar Street site at the southwestern edge of West Linn and is proposed to accommodate 850 students. The site components will include a track, turf field with lights, and appropriate site circulation, parking and street frontage improvements. Due to the size and shape of the site, the building is expected to be designed with two stories. Price includes all construction costs; as well as instructional technology; and furniture, fixtures and equipment necessary to function at par with any school in the district.</p>
<p>Conceptual estimate: \$88 million</p>	



INCREASING ACCESS TO THE ARTS WILSONVILLE HIGH SCHOOL AUDITORIUM ADDITION

Location	Wilsonville High School
Project Summary	<p>The major project for this school is a large performance theater with the accompanying support spaces for performing arts including drama instruction and stagecraft. Project would construct a new 600-seat theater (similar to WLHS) adjacent to the new performing arts entrance constructed under the 2014 bond program. This will also convert the existing auditorium, stage and arena theater to instructional space increasing total building capacity of the high school. The nature of that new instructional space will allow for increased Career Technical Education opportunities for Wilsonville High students. This project also includes appropriate site circulation and additional parking in the existing soccer field adjacent to the gyms.</p>
<p>Conceptual estimate: \$25 million</p>	



WEST LINN HIGH SCHOOL PARKING AND STADIUM IMPROVEMENTS

<p>Location</p>	<p>West Linn High School</p>
<p>Project Summary</p>	<p>The community of West Linn has demonstrated strong support of District athletics. A capacity increase has been identified as a need for the West Linn High School stadium. This project will include expanded covered home-side seating, as well as additional visitor bleachers. The new seating will accommodate more than 1,000 additional spectators.</p> <p>In order to accommodate the additional stadium capacity, as well as address concerns regarding the availability of off-street parking for students, this project will also include an expansion of the existing south parking lot. The lot will be furnished with appropriate storm-water management, pedestrian paths, landscape, and site lighting. The new lot will accommodate 120 vehicles.</p>
<p>Conceptual estimate for stadium expansion and required parking: \$8.3 million Conceptual estimate for additional parking only: \$3.5 million</p>	



ADDRESSING GROWTH AT PRIMARY LEVEL

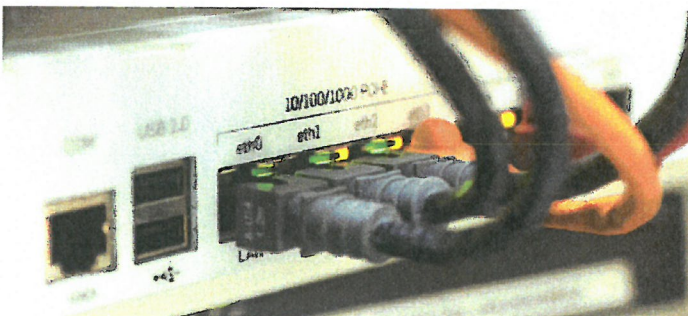
NEW WILSONVILLE PRIMARY SCHOOL

Location	Frog Pond Site, Wilsonville
Project Summary	<p>New housing developments in this area of Wilsonville are impacting enrollment projections. The construction of a new primary school would allow for this growth and limit the potential overcrowding of other primary schools in the area.</p> <p>As an aid to the planning process, this project is described as a new starter primary school with an initial capacity of 350 students with room for a future buildout to approximately 550 students. Price includes all construction costs; as well as instructional technology; and furniture, fixtures and equipment necessary to function at par with any school in the district. The site is 10 acres, relatively flat, and will have streets on three sides where utilities are readily available. Demolition of a residential structure and pole barns will be required.</p>
Conceptual estimate: \$39 million	



LEARNING WITH TECHNOLOGY

Location	District-Wide	
Project Summary	<p>Technology is a vital component of virtually every aspect of the School District. Teaching and learning is enhanced by technology and efficient building operations require a reliable technological infrastructure. Below is a summary list of technology and systems to be upgraded, replaced, or added.</p>	
	<ul style="list-style-type: none"> • Re-wiring existing schools • Network electronics • WiFi upgrades • Server environment • Phone system update • District-wide distributed digital signage • MDF/IDF power redundancy • Intercom system enhancement 	<ul style="list-style-type: none"> • Video monitoring • Radio network/system • New clock systems • Updated classroom display technologies • Auditorium/commons/MPR AV systems • Student and staff device rollouts
Conceptual estimate: \$18 million		



DISTRICT-WIDE IMPROVEMENTS

<p>Location</p>	<p>District-Wide</p>	
<p>Project Summary</p>	<p>The District works tirelessly to protect the community's investment in facilities. District-Wide improvements include a wide range of projects that address critical issues such as accessibility upgrades, equitable access and Title IV compliance, energy code and building efficiency upgrades, fire & life safety improvements, and renovations for Career Technical Education (CTE) learning environments. Below is a summary list of highlighted projects. See the previous chapter "Project Evaluation Criteria" for a full explanation of categories, types, and associated conceptual estimated costs.</p> <ul style="list-style-type: none"> • Air conditioning at Cedaroak Park, Stafford, Bolton and Willamette primary schools. • Instructional greenhouses at each middle school • Wet Lab / Classroom addition and site improvements at CREST • Synthetic Turf, lighting, and practice facility at Wilsonville High School women's softball field • Improved Career Technical Education (CTE) spaces, equipment, and fixtures at all high schools • Accessible playgrounds • Replace track surface at multiple schools • Select interior improvements at all schools • Select student furniture replacement • Kitchen equipment replacement • Athletic scoreboard replacement • Select roofing replacement • Select exterior painting • Select fire alarm system upgrades and replacements • Select fire sprinkler system replacements 	
<p>Conceptual estimate: \$24 million</p>		



February X, 2019

Legislative Leadership
Oregon State Capitol
Salem, OR 97301

Re: I-205 Widening and Seismic Improvements Project

Dear Ways and Means Co-Chairs Johnson, Steiner Hayward & Rayfield, and Joint Transportation Committee Co-Chairs McKeown & Beyer,

As officials elected by and/or representing the residents of the Portland metropolitan region, we share an obligation to protect their safety and promote a healthy economy that is accessible to all. The health and safety of our region and our state are inextricably linked to the infrastructure that connects them. In our region, millions depend on Interstate 205 for that connection.

Thanks to HB 2017, the Legislature identified the I-205 bottleneck between Stafford Road and OR 213 as a signature congestion relief project. With the state's subsequent investment of \$53.7 million, ODOT anticipates that the project will be shovel ready in early 2020. Unfortunately, under current plans, construction will be delayed until 2026 at the earliest due to a lack of funding. We believe it's our duty to act now to protect this important lifeline by funding these essential upgrades to I-205 in the 2019 legislative session.

This project reflects several of the important values that Oregonians hold with respect to their transportation system:

Safety – As a designated statewide north-south lifeline route, I-205 will be called upon to provide supplies and services to the region shortly after a disaster. Immediate action is needed to seismically upgrade the Abernethy Bridge and replace or retrofit eight additional bridges in the project area to withstand a major earthquake.

Economic opportunity – The federal government has designated I-205 as a High Priority Corridor in the Portland metropolitan area. It connects employers, the traveling public and businesses to the Portland International Airport, the State of Washington, and numerous local jurisdictions. This corridor serves as vital infrastructure for the economic health of both the region and the entire State of Oregon.

Quality of life – When the Governor's Transportation Vision Panel crisscrossed the state in 2016 seeking input on a transportation package, the public and businesses from all corners of Oregon sent a clear message on the need to address highway congestion in the Portland region, including the I-205 bottleneck.

Each year that construction is delayed, the estimated cost of this project increases by \$15 million. **We can't let these critical capacity and seismic upgrades languish while waiting at**

least seven more years for new revenues. We must begin right away. Fortunately, resources and opportunities are available this biennium to address this need.

We thank you for your attention to this critical need and urge your support for a funding solution in the 2019 legislative session to ensure that I-205 improves the quality of life of all Oregonians.

Sincerely,

**Jim Bernard, Chair
Clackamas County Board of Commissioners**

**Kathryn Harrington, Chair
Washington County Board of Commissioners**

**Deborah Kafoury, Chair
Multnomah County Board of Commissioners**

**Lynn Peterson, President
Metro**

**Martha Schrader, President
Association of Oregon Counties**

**Timm Slater, President
League of Oregon Cities**

**Shane Bemis, Chair?
Metro Mayors Consortium**

**Jana Jarvis, President
Oregon Trucking Association**

**Marie Dodds, Director of Government & Public Affairs
AAA Oregon**

**Curtis Robinhold, Executive Director
Port of Portland**

**Gregg Weston, President
Clackamas County Business Alliance**

**Brantley Dettmer, President
Westside Economic Alliance**

**Laura Edmonds, CEO
North Clackamas Chamber of Commerce**

**Russ Axelrod, Mayor
City of West Linn**

**Dan Holladay, Mayor
City of Oregon City**

**Steve Callaway, Mayor
City of Hillsboro**

**Paul F Morrison, Mayor
City of Tualatin**

**Brian Hodson, Mayor
City of Canby**

**Mark Gamba, Mayor
City of Milwaukie**

**Dennis Doyle, Mayor
City of Beaverton**

**Tom Ellis, Mayor
City of Happy Valley**

**Tim Knapp, Mayor
City of Wilsonville**

**Jimmy Thompson, Mayor
City of Molalla**

**Kent Studebaker, Mayor
City of Lake Oswego**

**Stan P Pulliam, Mayor
City of Sandy**

**Shane Bemis, Mayor
City of Gresham**

Sean Drinkwine, Mayor

City of Estacada

Tammy Stempel, Mayor
City of Gladstone

CC: Governor Brown, Speaker Kotek, President Courtney

DRAFT