

MEMORANDUM

Date: July 28, 2014
To: City Council and Mayor Kovash
From: Sustainability Advisory Board - NAA
Subject: Progress Report on Sustainable West Linn Strategic Plan Update
Attachments: *Civic Ecology Draft Summary Memorandum, June 28, 2014*

The Sustainability Advisory Board (SAB) would like to provide City Council an update to the Board's progress on updating the Sustainable West Linn Strategic Plan (Plan) and we appreciate being given time at a Council Work Session to do this. Additionally, the SAB would like to receive feedback from Council on this progress report.

Background

At the end of 2013, the SAB identified their desired goal for 2014 to be completing an update to the Sustainable West Linn Strategic Plan. This was communicated to Council by the annual Advisory Board year-end report and in February 2014, Council mirrored this with a work plan for the SAB consisting of one goal: "Complete the updated Sustainable West Linn Plan." Given this, the SAB has been hard at work trying to accomplish this lofty goal.

Progress

During the first half of 2014 the SAB focused on two main components of the Plan update process:

1. Reorganize the Plan into categories
2. Prepare for and work with SERA to facilitate three Civic Ecology workshops

Below are progress updates on each component:

Categories

The SAB feels that the Plan would be more user friendly and more easily incorporated into all areas of the City if it were organized by category rather than by recommendations per stakeholder, as it is now. We have decided upon seven categories with the understanding that the plan will be ever-evolving and in future updates new categories can be added and/or existing categories can be modified as needed. The seven categories the SAB is currently focusing on are:

1. Built Environment
2. Community Inclusion
3. Energy
4. Health & Food
5. Materials Management
6. Natural Areas
7. Water

These categories are the result of studying many successful Sustainability Plans from other jurisdictions in the U.S. and Canada that the SAB felt would be models beneficial and pertinent to the City of West Linn to consider. While there could be twice as many categories in a sustainability plan, due to the complexities involved in sustainability, we feel that these categories are broad enough to house all necessary components of a comprehensive and successful updated Plan for West Linn.

To delve deep into two or three categories at a time, the SAB is holding an extra meeting per month in July, August and September (with more as needed) to decide upon the vision and goals for each category. Prior to the meetings, teams of two SAB members do leg work on each category to get background information organized for the rest of the Board. Our first extra meeting was very productive as we worked through the categories of Energy and Materials Management. This is a challenging undertaking given that we are self-facilitating the Plan update however we feel that we are making good progress.

Civic Ecology Workshops

To gain community input and involvement on the updated Plan, the SAB worked with SERA Architects to host three community “Civic Ecology” workshops in the months of March, April and May 2014. The SAB felt that it was important to bring the whole community into this update process and to hear what other residents and interested parties saw as important aspects to include, because one hope of ours is that the updated Plan will be utilized city-wide, not just within City operations as it currently does.

The workshops were organized so that the first one would be heavily facilitated by SERA, with the SAB taking some of the facilitation duties over in the second and finally by the third workshop, the SAB would feel confident in leading the majority of it. This worked well and because this approach was taken the SAB has now received valuable training in a community charrette process that can be used in the future.

The three workshops all had a successful turnout from community members. The first workshop utilized a flow mapping exercise to engage attendees - with large base maps of West Linn atop tables in the Rosemont Ridge Middle School cafeteria. Each table was provided with 1” round paper icons that represented resources that a city might possess or need. Groups worked to identify as many resources on the map as they could, that are already available in West Linn. Next, resource flows were drawn with markers to see what closed loops may already exist within the City. The last part of this exercise was to use remaining paper icons to note resources that would be necessary to bring to West Linn in order to close some loops. This was a very engaging activity and scans of the resulting resource flow maps are included in the final report by SERA. From these maps, each table was to then come up with projects for the City that would help close loops and result in a more sustainable, resilient community. Both short term and long term project ideas were to be suggested by each table.

The second and third workshops had participants dig deeper into the project ideas that came from the first workshop. These projects were narrowed down and ultimately resulted in four projects that participants felt would be most beneficial to the City. At the last workshop, there were eager champions for each project. Here’s the final list:

- Fruit Tree Project
- West Linn Community Garden Team
- West Linn Community Cooperative
- Tool Library

Recommendations

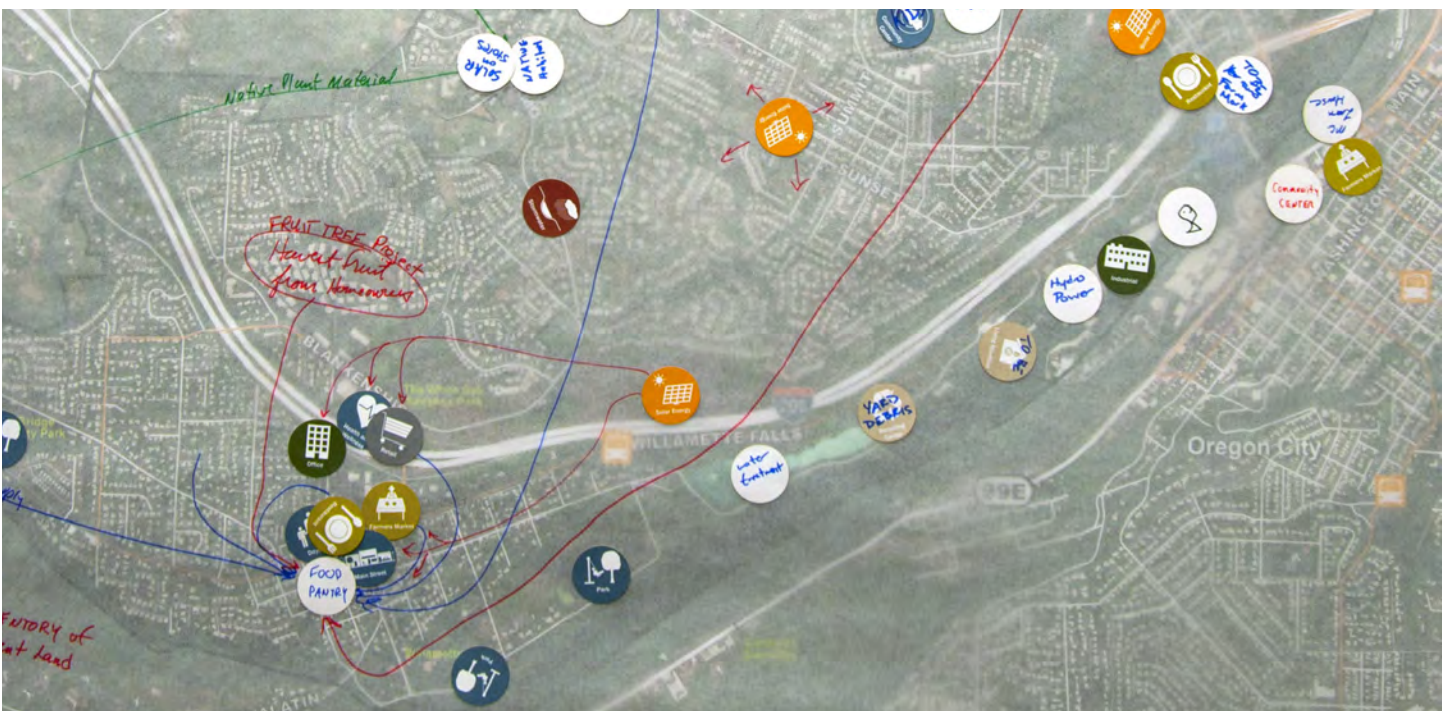
The SAB feels that the four final projects from the Civic Ecology workshops (as well as those mentioned in the final report that didn’t make top four status) should be incorporated into the Plan Update, possibly as Action Steps in appropriate categories. Additionally, the final report should be shared with all workshop attendees via email and on the Sustainability webpage on the City website. We’d also love to have a mechanism in which the SAB could partner with community groups and individuals that were interested in helping to take on projects that would help fulfill the vision and goals set forth in the updated Plan. We are willing to reach out to champions from the workshops however as the updated Plan hasn’t yet been approved we realize the legalities of implying that projects will be incorporated into the Plan so we look to Council for guidance on how to best leverage these motivated citizen groups and individuals.



West Linn Sustainability Plan Update Civic Ecology Workshops Summary Memorandum



July 28, 2014



**For more information on the Sustainable West Linn Strategic
Plan update please visit the City's Sustainability webpage:
westlinnoregon.gov/sustainability**

**Community Workshop
#1 Participants**

Clair Klock
Anthony Perry
Richard Halpern
Barbara Dobroth
Eric Cha
Ginny Haines
Penny Machinski
Duke Castle
Dave Robison
Jan Engler
Cecil Denney
Randall Fastabend
Councilman Thomas Frank
Rich Farrington
Kassie Ridley
Keith Jones
Rich Faith
Peter Herring
Tahsina Kazi
Aneya Kazi
Aleesha Kazi
Jef Treece
Nancy Bond
Mark Mutschler
Diana Starkus
Anna-Maria Hartner

**Community Workshop
#2 Participants**

Cliff Alexander
Curt Sommer
Penny Machinski
Susan Berger
Susan Day
Chris Allen
Jim Wilmes
Richard Halpern
Rich Faith
Kathy Lairson
Dave Riley
Cecil Denney
Lisa Tsukamoto Barnes
Joyce Jackson
Aleesha Kazi
Aneya Kazi
Tahsina Kazi

**Community Workshop
#3 Participants**

Cliff Alexander
Randall Fastabend
Miles McCoy
Curt Sommer
Rich Faith
Kathy Lairson
Grant Oakes
Peter Herring
Kassie Ridley
Mark Mutschler
Fariba Mutschler
Cecil Denney
Eric Cha
Susan Berger
Councilman Thomas Frank

Sustainability Advisory Board

Nicole Alexander Chair
Clare Bean Vice Chair
Glen Friedman
Lisa Clifton
Tamara Gilbert
Bill Hohensee
Paula Ryan
Zach Pelz City of West Linn Liaison

Charrette Facilitation and Reporting

Tim Smith SERA
Erin Reome SERA
Ben Weber SERA

Contents

What is the Sustainable West Linn Strategic Plan?, 05

What is Civic Ecology?, 06

Workshop #1, Schedule and Overview, 07

What Does Sustainability Mean?, 09

Group Work, 11

Group 1, 11

Group 2, 12

Group 3, 13

Group 4, 14

Group 5, 15

Group 6, 16

Workshop Summary, 17

Workshop #2 Summary and Next Steps, 19

Overview, 20

Citywide Garage Sale; Tool Exchange, 21

West Linn Garden Team, West Linn Co-op, 22

Local Transportation, Hydro Water Turbines, 23

Farmers Market, Fruit Tree Project, 24

West Linn Sustainability Team; Solar Energy Pilot Project, 25

Other Project Proposals, 26

Next Steps for Workshop #3, 26

Workshop #3 Summary and Next Steps, 27

Fruit Tree Project, 28

Community Cooperative, 29

Community Garden Teams, 30

Tool Library, 31

Appendices

Workshop #1 Presentation, A-2

Workshop #2 Presentation, A-17

Workshop #3 Presentation, A-25

Workshop #2 Evaluation Criteria, A-32

What is the Sustainable West Linn Strategic Plan?

In 2005 West Linn City Council convened a task force of citizens and stakeholders with knowledge and expertise in areas of community sustainability. This committee was charged with making recommendations to Council on how the City could make serious progress towards advancing sustainability in West Linn.

From this emerged the *Sustainable West Linn Strategic Plan*, to guide efforts to “protect and enhance the integrity, stability, and beauty of the natural environment”; reduce the negative impacts of growth and development; and “provide a healthy, productive, and meaningful life for all community residents, present and future for the economic, social, and environmental systems that make up our community of West Linn”.

And what does Civic Ecology have to do with it?

The Sustainability Advisory Board of West Linn has begun to update the *Strategic Plan* with a focus on actions and steps that members of the community can take, not just those that the City can implement. West Linn is full of passionate, dedicated people who have a vested interest in the livability, vibrancy, and sustainability of their city. Civic Ecology is a framework to help bring these people together to devise projects and initiatives, large and small, near-term and long, that will unify the community towards building a more sustainable future.

This series of three workshops is just a small step towards convening stakeholders, decision-makers, and the public for the purposes of identifying their community’s existing resources, visioning their future, and establishing the combined hardware and software systems that will help make the city a more resilient, sustainable place to live, work, and play for current and future generations.

Imagine a community in which neighbors join with businesses to envision a sustainable future.

Imagine small community projects drawing people closer.

Imagine bigger goals - providing local goods and services to help citizens drive less, encouraging students to grow food in community gardens, and sharing produce with neighbors.

Imagine a more Sustainable West Linn.

THANK YOU to the event sponsors and donors

- Rosemont Ridge Middle School
- Sunset Fire Hall
- Market of Choice
- Central Village Starbucks
- Cedar Oak Starbucks
- Cascade Summit Starbucks
- The City of West Linn Sustainability Advisory Board
- The City of West Linn

CIVIC ECOLOGY

5 PRINCIPLES

1. Employs a whole systems approach
2. Focuses on place
3. Requires a new social contract
4. Matches needs and capacities
5. Is dynamic

From the “Civic Ecology White Paper” by Tim Smith, SERA Architects (2006)

Many communities and institutions have begun to realize that attaining sustainability requires careful attention to planning, constructing, and managing a comprehensive framework of community systems. Energy flows, local food production systems, local-global economic webs, social networks, community governance, resource sharing networks, and integrated land use and transportation are just some of the community systems that, when synergized in a specific place, constitute a complex human ecosystem or “Civic Ecology.” Nurturing this web of relationships and flows affords communities opportunities to enhance their local wealth (environmental, economic, and cultural), resilience, and competitiveness, and to take control of designing and managing their future. The Civic Ecology (or “community software”) approach, provides a context for the community’s future “hardware”: green building and sustainable infrastructure.

To begin the process of creating a Civic Ecology, a community must ask itself five essential questions:

- *Where are we now?*
- *Where do we want to be in 10, 20, 50 years and beyond?*
- *How do we get to where we want to be?*
- *How do we know if we are getting there?*
- *Who wants to help answer these questions?*

Answering these questions requires that communities embark on a process that consists of five **CIVIC** tasks: **C**onvening stakeholders, **I**nvestigating existing conditions and opportunities, community **V**isioning, **I**mplementing projects and initiatives, and **C**harting progress.

Civic Ecology’s whole systems approach will yield a snapshot of the community’s desired future, the “software” necessary to achieve that future, and the ability to chart whether means and ends are in alignment. It provides the fundamental context necessary for making decisions about capital investment in “hardware” (buildings, streets, schools, parks, and utilities), economic revitalization, business growth and retention, main street improvements, and virtually anything related to the common good.

“*How is your Civic Ecology?*” Answering this question is the ultimate community building exercise. It requires citizens to learn about their communities, its strengths, its weaknesses, and its possibilities. It requires them to do it together, continuously, forever. It also requires new eyes (a whole systems approach) and constant vigilance. The rewards are many, and mostly for generations too young or not present to participate.

West Linn Community Workshop #1

10am-2pm, March 15, 2014

Rosemont Ridge Middle School, 20001 Salamo Rd, West Linn, OR

INTRODUCTIONS

Members of the Sustainability Advisory Board introduce themselves and provide an overview of the Strategic Plan update process. Community members in attendance then introduce themselves. [10-10:20am]

CIVIC ECOLOGY PRESENTATION

What is Civic Ecology? A brief introduction to the principles, benefits, and process, including community case study examples. [10:20-11:00am]

EXERCISE #1: COMMUNITY FLOW MAPPING

Working groups identify neighborhood resources and map the flows that (could) connect them. [11:00-12:00pm]

WORKING LUNCH

Enjoy some food, but keep working! [12:00-12:30pm]

EXERCISE #2: PROJECT IDENTIFICATION

Groups identify several promising project ideas (both Low-Hanging Fruit and Big Hairy Audacious Goals) and identify assets and barriers to implementation for each. [12:30-1:15pm]

REPORTING

Working groups present their selected flows, big ideas, and short and long term projects to the group. [1:15-1:45pm]

SESSION SUMMARY DISCUSSION

What happens now? How does collective brainstorming get put into action? [1:45-2:00pm]

Workshop #1 Overview

On Saturday, March 15th, 2014, the West Linn Sustainability Advisory Board hosted their first community workshop at Rosemont Ridge Middle School. The workshop was facilitated by staff from SERA Architects. The workshop's goals were to introduce community members to the civic ecology model and have them brainstorm initiatives and projects that could both serve local needs and be championed by empowered groups and individuals. As such, the workshop was also intended as a networking venue for a diverse constituency.

The majority of workshop attendees were from West Linn and they represented a range of community groups, professional disciplines, and personal talents. Other attendees came from neighboring communities and/or were invited specifically to contribute their expertise in certain areas of sustainability. The workshop stimulated lively discussions on a broad range of sustainability topics, with a strong emphasis placed on projects to share resource and knowledge, eco-friendly living pilots, food systems, waste management, local transit service, and developing economic clusters that enliven West Linn's communities.



The workshop schedule appears on the preceding page. In the pages that follow, the tangible workshop results are presented. While the concepts and designs put forth by the various working groups and individuals have been somewhat reorganized and slightly edited in order to improve readability, they are presented here largely as they were by the participants at the workshop on March 15th.

WORKSHOP 1: WHAT DOES SUSTAINABILITY MEAN?

The workshop began with participants introducing themselves to the group and providing a brief explanation about what sustainability means to them. Attendees took this opportunity to elaborate on aspects of sustainability that they would like to see implemented at a range of scales. Desires ranged from regional watershed health to community energy production to being good neighbors and engaged citizens. There was general consensus in both ideas and intentions which provided a solid sustainability baseline to inform both the day's events and the work going forward.

Following an introductory presentation on Civic Ecology*, workshop participants divided into six working groups, each of which was asked to consider the various resources available in West Linn and to map the flows that (could) connect them.

For the purposes of this exercise (and for the workshop generally), “resources” were defined in the broadest possible sense, encompassing energy entities (e.g. solar, community energy production), physical entities (e.g. water, compost), social entities (e.g. civic organizations, labor), etc. All forms of “waste” were considered resources, as were potential systems, partnerships, and educational strategies.

During the exercise, each resource placed and labeled was to be connected to other resources via a “flow” arrow. The goal of this was to “close as many loops” as possible, such that no resource was a terminus or a producer of unaccounted-for “waste.”

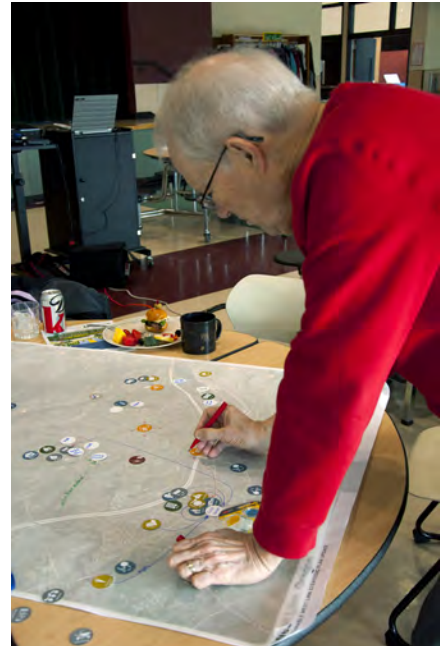
Participants were given aerial maps of West Linn for reference on which to draw their diagrams. Workshop attendees divided into groups based on the neighborhoods they were most interested in. They were reminded repeatedly, however, that the exercise was not about physical planning for the city, but rather was about constructing “flow diagrams” to illustrate the potential of the communities in West Linn to create interlocking systems and thereby achieve higher levels of sustainability.



* Full presentation can be found in the Appendix

Workshop attendees were encouraged to identify resource flows on their group diagrams to further investigate. Ideally, one or two flows were to represent systems that could be considered “low hanging fruit” or something that could be accomplished within the short or near term. Attendees were also asked to identify a system of resource flows that could be identified as a “BiHAG”, or “Big Hairy Audacious Goal”. This BiHAG should represent a more complex system potentially achievable over the long term.

The resulting work from the six groups is presented on the following pages.



Cecil Denney engrossed in resource flow mapping new systems for West Linn.



Workshop attendees begin to map neighborhood resource flows in Workshop 1

GROUP 1

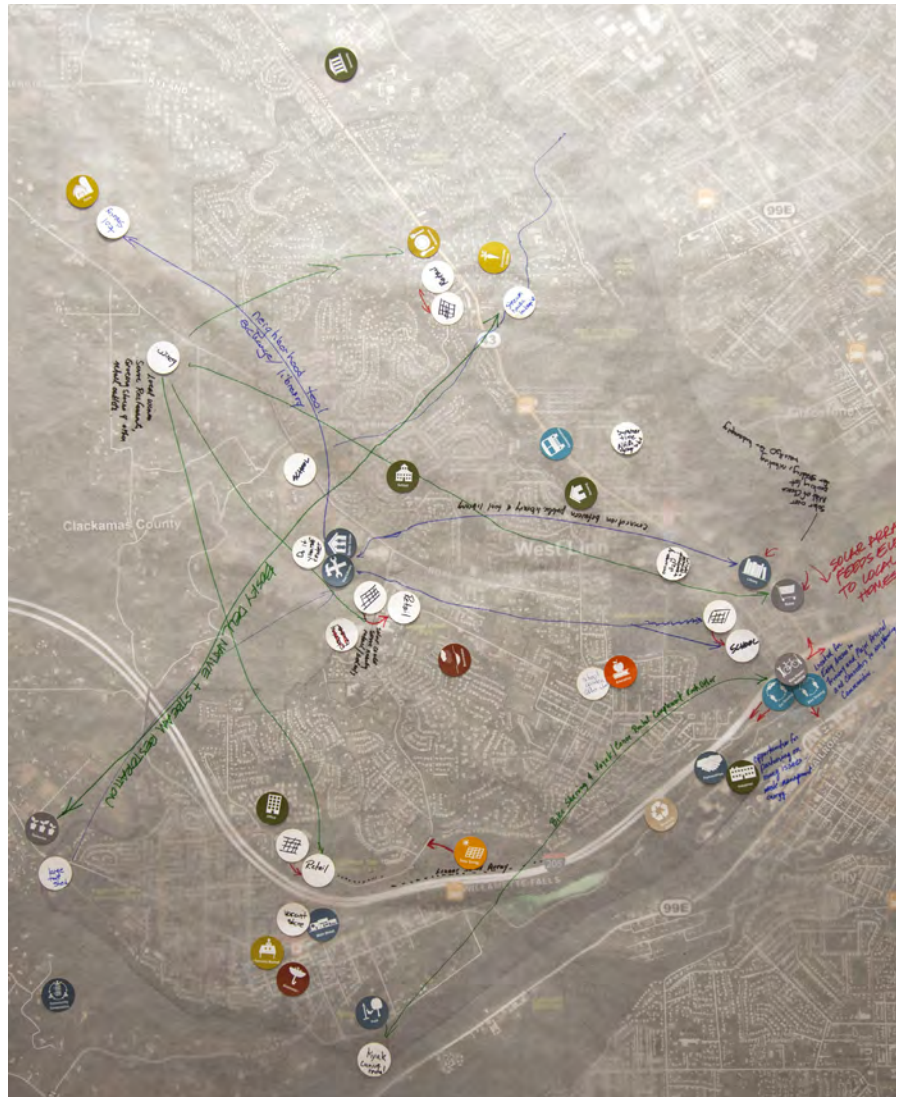
POTENTIAL PROJECTS

Short term:

- Organize a city-wide garage sale to help people part with unneeded goods that may be of use to others. Proceeds from the sale could be contributed to a community investment fund.
- Create partnerships between area landscaping businesses, nurseries, community groups, and watershed restoration interests to help plant native species along sensitive waterways. Nurseries, landscapers, and nearby schools can also be resources to help educate people about attractive and environmentally responsible natural treatments.

Long term:

- Establish a tool sharing library and organize classes and other educational events to help community members become more proficient with household and neighborhood duties.



Group 1 resource flow map





Group 2 resource flow map

POTENTIAL PROJECTS

Short term:

- Link together a central compost facility with neighborhood food/ yard waste collection and compost soil distribution points. Identify sites for permanent and temporary community gardens.

Long term:

- Develop a micro-community / Living Village with a variety of housing types, shared resource systems, and demonstration sustainable pilot projects.



GROUP 3

POTENTIAL PROJECTS

Short term:

- Develop sustainability laboratories at area schools
- Initiate an artist co-op with living and studio space and shared retail venues
- Develop a year-round farmers market connecting vendors, growers, restaurants, and community members.

Long term:

- Establish a tool sharing library and organize classes and other educational events to help community members become more proficient with household and neighborhood duties.



Group 3 resource flow map





Group 4 resource flow map

POTENTIAL PROJECTS

Short term:

- Convert vacant residential and commercial area lots into community gardens.
- Expand and improve the offerings and services of the community food pantry.

Long term:

- Redevelop the Arch Bridge area police station with mixed-use housing, a year-round market, and other amenities that will help it serve as a catalyst site for the entire area around the south end of Highway 43



GROUP 5

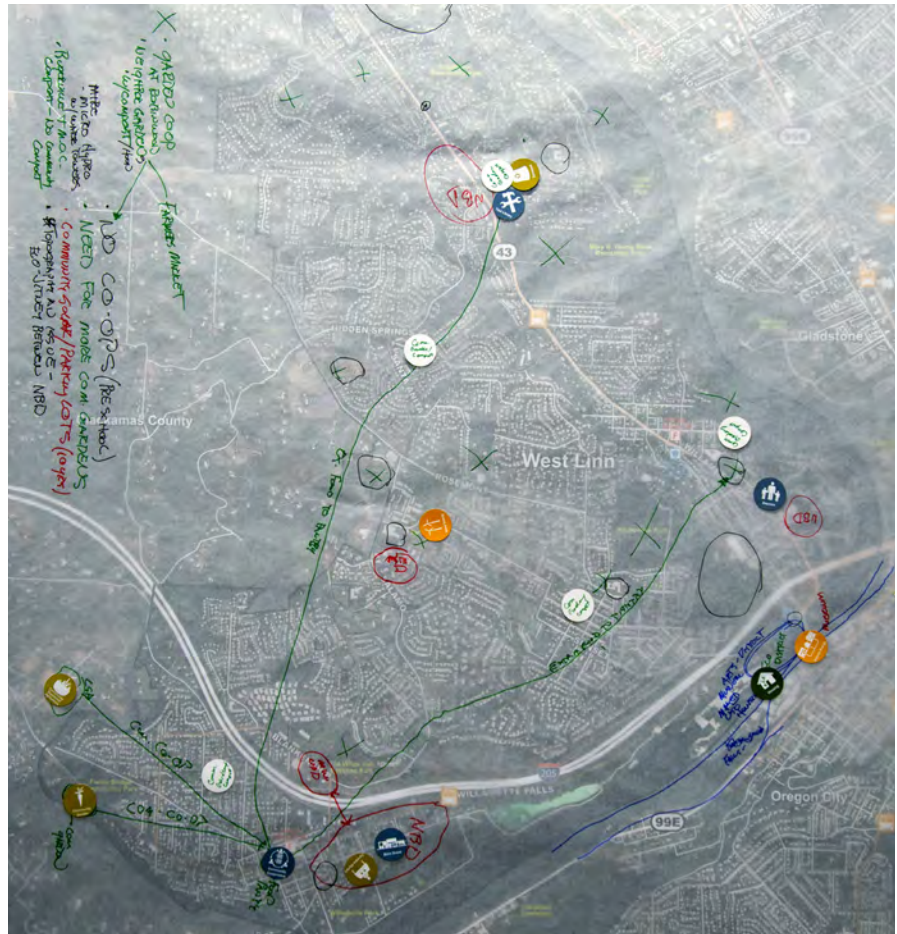
POTENTIAL PROJECTS

Short term:

- A community-organized tool library
- Organize a fruit-gathering group to harvest the (often unused) edibles growing around West Linn. Distribute food to neighbors, restaurants, senior centers, and schools.
- Community gardens throughout the city

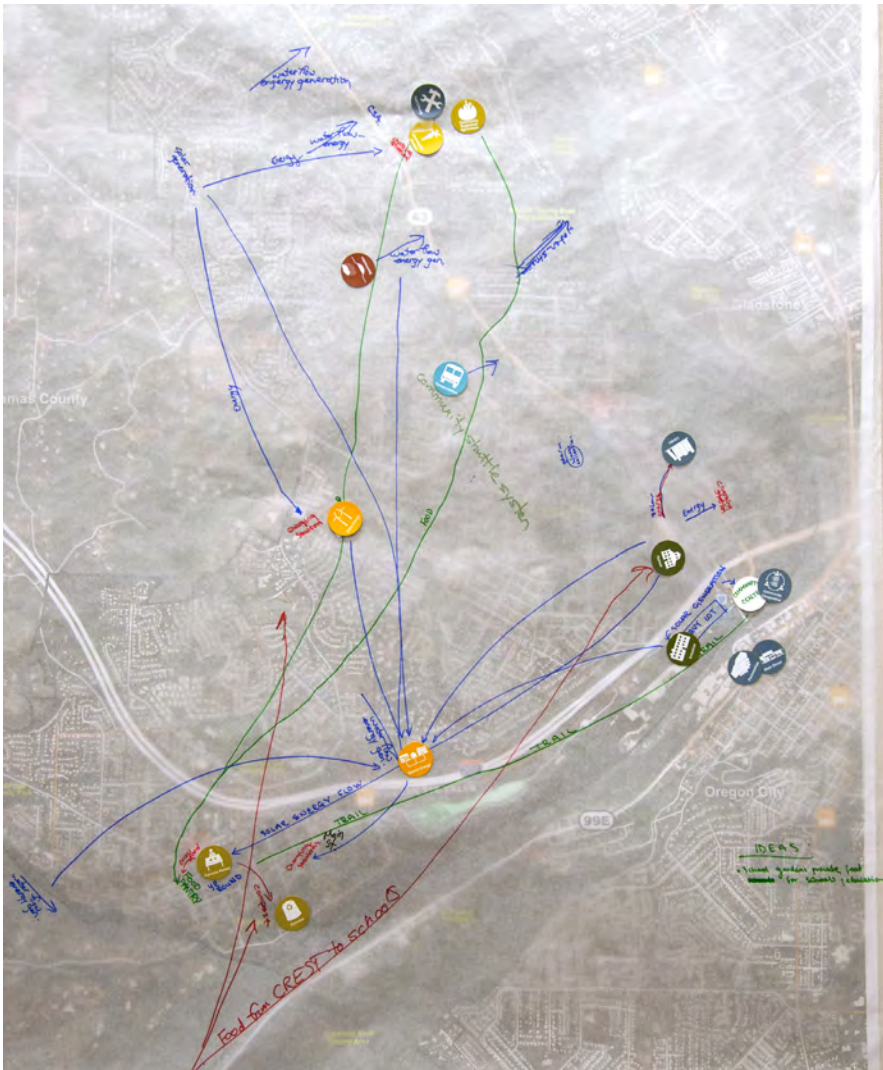
Long term:

- Local eco-jitney transit service linking schools, commercial districts, senior centers, housing, and regional transit.
- Coordinate a local currency or time bank through which people can earn, spend, and swap credits for goods and services - keeping talent and money inside the community
- An eco-arts district that serves as a regional tourist and commercial attractor



Group 5 resource flow map





Group 6 resource flow map

POTENTIAL PROJECTS

Short term:

- A community co-op for tool and skill sharing, barter economy, and a local health care network

Long term:

- District renewable energy throughout West Linn sources from solar energy at West Linn High School, microgenerators on the Willamette River and small streams, and a wind farm at Tanner Creek Park



Workshop Summary

The goals of this introductory workshop were to introduce community members to the Civic Ecology model and to have them brainstorm initiatives and projects that could both serve local needs and be championed by empowered groups and individuals. It is hoped that participants left the workshop with the motivation to begin to put these systems in place.

The intent of the second workshop is to provide interested parties an opportunity to focus on which projects to advance as well as the organizational steps necessary to get them started. Participants at the next workshop will be asked to put a finer point on funding and partnership opportunities (including the ways in which the City can be involved); and to devise mechanisms for monitoring project success within the community.

Next Steps

Following Workshop #1, the project team worked together to draft this summary as a community resource informing the next public workshop, scheduled for April 19, 2014. At this Workshop #2, community attendees will further refine the project opportunities they identified in Workshop #1 and begin to discuss project priorities and implementation strategies for making the ideas a reality.

Several of the participants from Workshop #1 have also been meeting ad hoc on their own to discuss opportunities and identify promising paths forward towards making West Linn a more sustainable, resilient, livable community.

West Linn Community Workshop #2

1-5pm, April 19, 2014

Sunset Fire Hall, 2215 Long St. West Linn, OR

INTRODUCTIONS

Members of the Sustainability Advisory Board introduce themselves and provide an overview of the Strategic Plan update process. Community members in attendance then introduce themselves. [1:00-1:15pm]

CIVIC ECOLOGY PRESENTATION

Tim Smith presents on “What is Civic Ecology?” A brief overview of Workshop #1 outcomes and any updates that have occurred since then. [1:15-1:40pm]

EXERCISE #1: PROJECT DEFINITION

Attendees review Workshop #1 project ideas; identify promising project ideas; evaluate projects using the evaluation matrix; and begin thinking about implementation steps [1:40-3:00pm]

BREAK

[3:00-3:15pm]

REPORT-OUT

Groups present their most promising project ideas and assets, constraints, partnerships, etc. [3:15-4:15pm]

STRAW POLL VOTING

Participants vote on their favorite project ideas from amongst all the groups. It is emphasized that this is just a casual straw poll, not binding by any means [4:15-4:30]

IMPLEMENTATION STRATEGIES

Tim Smith and guests present several grassroots strategies for making community projects happen [4:30-4:50pm]

Q&A AND WRAP-UP

[4:50-5:00pm]

** All times aspirational and approximate*

On Saturday April 19th, 2014, the West Linn Sustainability Advisory Board hosted the second Civic Ecology community charrette at the Sunset Fire Hall. The workshop was facilitated by staff from SERA Architects. The workshop's goals were to build upon the ideas conceived in the first workshop and to identify the most promising projects for people in West Linn to carry forward.

A bit over half of the 25 attendees had also been present at Workshop #1 on March 15, 2014; the remaining community members were new to the workshops. As an introduction to the process, the consultant team provided a summary presentation of the previous workshop and reviewed the project idea list generated by those participants. Community participants then reformed their breakout groups from Workshop #1 (with some new faces added) to discuss existing project ideas, create new projects, and work through an evaluation criteria process to identify the most promising and beneficial projects.

The evaluation process asked participants to consider numerous project factors, including assets and barriers, community involvement, timelines and costs, and benefits to the community and local businesses. The projects were also evaluated on the basis of the four principle Natural Step criteria; the City of West Linn has used this framework in the past and it provides a useful perspective for gauging the sustainability of project proposals. Teams reported back to the larger audience, presenting the projects they thought most promising. At that point, all workshop participants used voting dots to tally their favorite project ideas across all groups.

The projects that received the most support from workshop participants are listed beginning on page 21. Those project ideas that were not as popularly supported (but are still valid for further exploration) are listed beginning on page 26.



PROJECT: CITY-WIDE GARAGE SALE



Solves a Community Problem

- Reduces waste and saves money
- Consolidates many disparate garage sales into a single event

Assets

- Community-building
- Keeps money local
- Provides a convenient service/opportunity for West Linners

Barriers

- Logistics challenge of organizing a single, large event
- Difficult to promote/advertise

(Potential) Champions/Partners

- Neighborhood Associations
- Sustainability Advisory Board

Supporting Group(s)

- Group 1

PROJECT: TOOL EXCHANGE



Solves a Community Problem

- Overflowing garages
- Waste reduction; cost savings

Assets

- Reduce waste, save money, and prevent unnecessary purchasing
- Likely a great latent demand for such a tool library
- Convenience; tool use training opportunities

Barriers

- Ingrained culture of not sharing our possessions (though could involve an AirBnB-style verification/rating system)
- Repair, maintenance, and liability
- Organization, operations, and management - perhaps a digital location (instead of a centralized tool library shed)

(Potential) Champions/Partners

- None identified

Supporting Group(s)

- Group 1

PROJECT: WEST LINN GARDEN TEAM



Solves a Community Problem

- Creates a community place and activity; get to know your neighbors
- Resilient, local food economy; builds skills and knowledge
- School education opportunity
- Could also focus on growing food plants

Assets

- Large, open lawns for potential planting; favorable, rainy climate
- Many experienced gardeners in the community
- Medium for a small barter economy or time-bank

Barriers

- Land constraints: zoning; hilly and hard to access; contamination
- Lack of biodiversity

(Potential) Champions/Partners

- Schools and businesses
- EPA, watershed councils, local non-profit ecological organizations
- Bosky Dell Natives
- Farmers Markets

Supporting Group(s)

- Group 2, 5

PROJECT: WEST LINN CO-OP



Solves a Community Problem

- West Linn lacks local food and goods sources
- Could be home to tool library, bikeshare, farmers market, medical office, and other community needs; skills and goods

Assets

- Access to real estate agents who can assist in finding property for co-op
- Could combine with a local currency or time-bank scheme
- Keeps resources and money local
- Skilled local population

Barriers

- Difficulty in finding a location
- Capital costs
- Significant time investment

(Potential) Champions/Partners

- WLHS Green Team
- 19th Street Farm
- Financial / lending institutions

Supporting Group(s)

- Group 3, 5

PROJECT: LOCAL TRANSPORTATION



Solves a Community Problem

- Provides mobility to kids, elderly, disabled
- Links disparate commercial centers in West Linn

Assets

- Potential tie-in with TriMet
- Encourage local retail
- Opportunities for trails and bikeways

Barriers

- Capital and operating costs
- Will need a partnership to implement

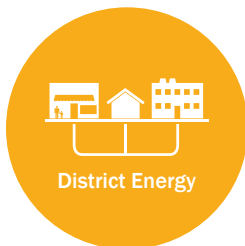
(Potential) Champions/Partners

- Chamber of Commerce
- TriMet
- City of West Linn
- Schools and senior centers

Supporting Group(s)

- Group 3, 5, 6

PROJECT: HYDRO WATER TURBINE



Solves a Community Problem

- Energy security; low-carbon future

Assets

- Existing powerful natural water systems in West Linn

Barriers

- Expense
- Highly-technical undertaking

(Potential) Champions/Partners

- Energy Trust
- City of West Linn

Supporting Group(s)

- Group 4

PROJECT: FARMERS MARKET



Solves a Community Problem

- Creates a community place and activity; get to know your neighbors
- Resilient, local food economy; builds skills and knowledge
- School education opportunity

Assets

- Potential siting at former police station
- Guidance from Oregon City Farmers Market

Barriers

- Siting, location
- Parking/access
- Seasonality
- Oversaturation of farmers markets?

(Potential) Champions/Partners

- Farmers
- Artists and craftspeople
- Business associations

Supporting Group(s)

- Group 4, 6

PROJECT: FRUIT TREE PROJECT



Solves a Community Problem

- Food security, access to healthy food
- Excess of fruit going to waste

Assets

- Could be a component of a larger co-op network in West Linn
- Abundance of fruit trees in West Linn

Barriers

- Pest prevention
- Difficult to ensure sustainable harvesting practices
- Distribution of collected fruit

(Potential) Champions/Partners

- Food pantry
- Portland Fruit Tree Project
- Boy Scouts
- 4-H
- Schools
- Food Pantry

Supporting Group(s)

- Group 4, 5

PROJECT: WEST LINN SUSTAINABILITY TEAM



Solves a Community Problem

- Grassroots sustainability efforts - links with City and SAB

Assets

- Students/teachers - STEM-aligned
- PTA

Barriers

- Bureaucracy

(Potential) Champions/Partners

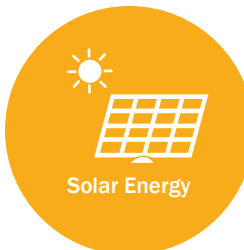
- Clare!
- Future NPO Earthkeepers

Supporting Group(s)

- Group 3



PROJECT: SOLAR ENERGY PILOT PROJECTS



Solves a Community Problem

- Energy security

Assets

- Availability of open spaces and rooftops for potential installation

Barriers

- Expense
- Technical undertaking

(Potential) Champions/Partners

- Energy Trust
- Solar Oregon
- Utilities
- Schools

Supporting Group(s)

- Group 6

PROJECT: OTHER PROJECT PROPOSALS

- District energy center
- Bio-fuels using horse manure
- Local currency (could be integrated with Tool Library, Co-op, Farmers Market, and other promising projects)
- Revitalize the Food Pantry
- Backyard poultry (could be integrated with Co-op, Farmers Market, and other food sourcing projects)
- Carbon offsets for City operations
- Invasive species removal (could be integrated with Garden Club and Fruit Tree projects)
- Living Village Eco-Community
- Stream restoration projects; natural habitat



Next Steps

Workshop #3, upcoming on May 31, 2014, will be the final gathering in this series and will allow participants to further identify opportunities, prioritize projects, and devise strategies for implementing ideas that will make West Linn a more sustainable and community-oriented city. Members of the Sustainability Advisory Board (SAB) will lead the workshop by summarizing past findings, helping attendees convene around project ideas they are passionate about, and facilitating conversations about how to make those ideas a reality.

The SAB will also further detail how the ideas generated through the Sustainable West Linn Strategic Plan Civic Ecology workshops will inform the broader West Linn Sustainable Action Plan. Tim Smith of SERA will discuss additional implementation and partnership strategies and will encourage workshop participants to take the lead in engaging their neighbors in moving forward with projects.

West Linn Community Workshop #3

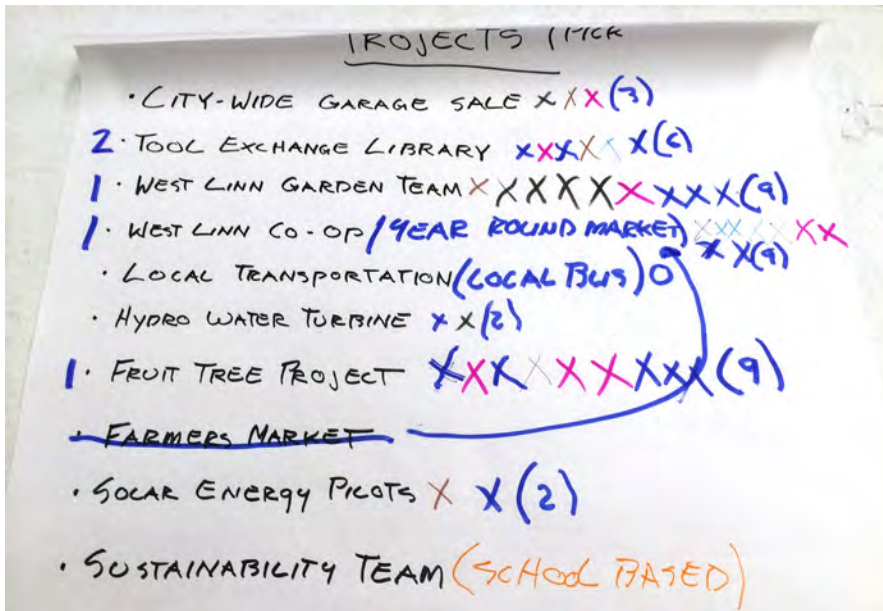
1-5pm, May 31, 2014

Sunset Fire Hall, 2215 Long St. West Linn, OR

On Saturday May 31st, 2014, the West Linn Sustainability Advisory Board hosted the third Civic Ecology community charrette at the Sunset Fire Hall. Unlike previous workshops, this one was facilitated almost entirely by SAB members. During Workshop #2, community members identified a range of promising project ideas. Workshop #3 was held specifically to narrow the body of projects into a few of the most promising and popularly supported and then to enlist the input of attendees to devise more detailed implementation steps and strategies.

At the outset of the workshop, attendees voted their support for the projects in order to select the ideas to be further developed. Results of the voting are depicted below. The Tool Exchange Library, Fruit Tree Project, West Linn Garden Team, and Co-op projects emerged as the favorites. Workshop participants then broke into smaller teams to spend the next several hours formulating project schedules, budgets, team members, business plans, and other important details.

These details are presented on the following pages.



PROJECT: FRUIT TREE PROJECT



What is the Problem?

- Fruit goes to waste in many people’s individual gardens. There is an overabundance of cherries, plums, apples, pears, grapes, figs, strawberries, blueberries, and tomatoes (this is an enviable problem to have)
- Trees are often not properly cared for
- How to match supply of fruit with demand for fruit?
- How to find the labor-force to harvest the fruit

Tasks

1. Coordinate with food bank for volunteers
2. Get permission of participating homeowners
3. Mapping of fruit tree locations (Miles McCoy has good knowledge)
4. Coordinate with other organizations for volunteers
5. Publicize the Fruit Tree Project for both tree-owners and food recipients. Media could include: newsletters, water bills, ads at schools)
6. Organize a system for the ongoing care of fruit trees
7. Establish system of ID/verification for “gleaners” (those who harvest fruit)
8. Coordinate any special agreements between property owners and gleaners
9. Educate people about using and processing the food.

Benefits

- Provides food to those who want it and avoid waste
- Community building / land stewardship

Budget

- PR and advertising: \$500
- Stipend for three coordination managers \$1500
- Apple press rental for harvesting party: \$100

Resources

- Three managing coordinators (telephone, computer, PR outreach)
- Mapping
- Legal advice on agreements and liability
- Equipment: gloves, pruners, vests, boxes, etc

Issues

- Liability issues on private property

Duration

- Multi-year with a seasonal focus

Funding / Research

- West Linn Neighborhood Grants
- PSU and Marylhurst student coordinators (MBAs?)
- Availability of college student volunteers
- Consider membership fees to glean
- How does the Portland system work?
- Sell produce through the Co-op (see project on page 29)

Champions

- Miles, Lisa, Resiliency Organization of West Linn (ROWL)



PROJECT: WEST LINN COMMUNITY COOPERATIVE



Problem Definition and Goals

- Develop a local hub for produce/cafe, tools/crafts, classes/learning
- A Co-op as the “heart” of West Linn

Budget

- Rent or ownership of site
- Improvements to site/structure
- Labor, management, logistics, marketing, equipment, maintenance

1-Year Action Plan

- Solidify core team
- Research startup business models
- Find a suitable co-op location
- Conduct a (potential) membership survey
- Develop a business plan
- Research USDA Grants

Champions

- Miles, Lisa, ROWL



PROJECT: WEST LINN COMMUNITY GARDEN TEAM



The Goal

- Develop “learning gardens” as a place to provide fresh food and promote educational opportunities
- Develop more cooperative opportunities

Benefits

- Stronger sense of community
- Boost food security

Tasks

- Identify potential garden sites throughout West Linn (public and private)
- Build relationships with existing community gardens
- Connect with experts (such as Marylhurst’s Masters of Food Systems and Society Management)
- Translate plans into gardens

Resources

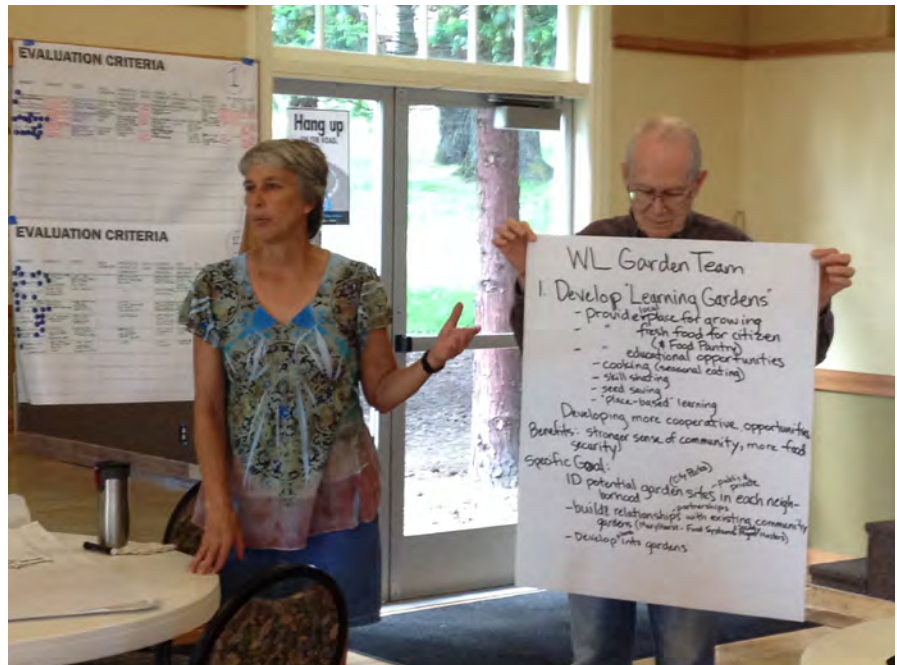
- City staff support for community organization and classes
- Need for land, water, compost, and tools

Duration

- Multi-year start-up and operations timeline

Champions

- Lisa, Tamara



PROJECT: TOOL LIBRARY



The Goal

- A discount and no fee lending distribution center for use by, and benefit of, West Linn residents. (Influenced by tool library systems in Portland)

Problem Areas / Major Decision Points

- Management (City, volunteers, paid staff)
- Liability
- Acquiring tool inventory
- Hours of operation
- Fee/membership structure
- Location (Robinwood Station, Old Fire Station, Old Police Station)

Budget

- Rent
- Tenant improvements
- Shelving, storage, computer
- Tools
- Basic office supplies
- Proposed \$5000 start-up with significant additional equipment donations

Funding

- Start-up funding through West Linn Community Grant
- On-going operations funded through rental fees and donations

Duration

- Multi-year start-up and operations timeline (reduced hours in the winter)

Champions

- Randall, Rich, Grant
- West Linn Library and Parks Department
- Friends of Robinwood Station (FORS)
- Community Garden Groups (as potential frequent users of a tool library)



Moving Forward

The West Linn Sustainability Advisory Board, the City of West Linn, and numerous volunteers have put in many hundreds of hours developing and updating the Sustainable West Linn Strategic Plan. This process is setting the course not only for West Linn to become a more sustainable place in the environmental, social, and economic realms, but is also bringing together community members to create projects and structures that will benefit many inside and outside of West Linn for years to come.

West Linn introduced the Civic Ecology approach early and effectively in this effort. The SAB has been a dedicated champion throughout and has successfully enlisted the assistance and expertise of many in the community towards advancing the project ideas that emerged through the workshops in Spring 2014. Workshop participants have coalesced around several promising project ideas; these teams will continue to work with the SAB to recruit partners, find funding, establish schedules, and get the projects up and running.

One or more members of the SAB will partner with each of the four project teams to help coordinate City support and other efforts. Additional steps will be necessary to build community support and rally others in West Linn to the cause. The SAB will take the lead on promoting these “Sustainability Projects” at various events and forums around town. Additionally, SERA Architects will remain available as a resource in the future as projects take hold.

The Civic Ecology approach works from the very beginning because it focuses on several vital elements of project conception.

- CONVENING committed stakeholders and partners
- INVESTIGATING problems that are truly important to the community
- VISIONING solutions and systems that offer multiple benefits
- IMPLEMENTING projects that are broadly supported and offer opportunities for many in the community to get involved
- CHARTING PROGRESS to understand the impacts of the projects and systems over time and on all aspects of the community

With that framework established, West Linn looks off to an excellent start bringing people into the plans for sustainability, resiliency, and engagement.

Emerging projects with strong community support include:

- Tool Lending Library
- Garden Teams
- West Linn Community Cooperative
- West Linn Fruit Tree Project

Appendix
Civic Ecology
Workshop Presentations



SUSTAINABLE WEST LINN STRATEGIC PLAN UPDATE



Civic Ecology Workshop #1
March 15, 2014



AGENDA

MARCH 15
Rosemont Ridge Middle School

10:00 - 10:20 am	Introduction to Sustainability Plan Update; Introduction of Workshop Attendees
10:20 - 11:00 am	Civic Ecology Briefing and Flow Mapping Instructions
11:00 - 11:15 am	Break and Flow Mapping Setup
11:15am - 12:45 pm	Resource Flow Mapping Group Exercise
Noon-ish	Lunch (grab food and return to your working group)
12:45 - 1:15 pm	Group Project Identification – barriers and assets
1:15 - 1:45 pm	Report back to Everyone on Project Ideas
1:45 - 2:00 pm	Wrap-up, Next Steps, and Questions



Sustainable West Linn Strategic Plan
July 2008

Making life better for all living things, ourselves, and our children.

Sustainability Plan Update Workshop
CALENDAR DATE
Saturday, March 15, 2014 - 10:05am

Add this event to your personal calendar (pdf)

What will the future hold for your city? The present! Please join our community working parties and volunteers with your West Linn neighbors and colleagues in a free facilitated exercise to design a sustainable future for West Linn.


- Identify and map out systems for energy, water, waste, food, and local resources.
- Consider your ideas to see how they may integrate into existing community building projects.

There are three meeting dates and times. Children & youth invited.

- March 15, 2014 - 10:00 - 2:00 @ Rosemont Ridge Middle School
- April 18, 2014 - 1:00 - 5:00 @ Forest Park Hall
- May 12, 2014 - 1:00 - 5:00 @ Forest Park Hall

We hope to see you at this important community activity!

Questions? Please contact Zach Peck at City Hall at zpeck@westlinn-oregon.gov or 503.687.0355.





CIVIC ECOLOGY



Civic Ecology is the integrated web of energy, nutrient, resource, financial, information and cultural flows, envisioned, created, and managed by citizens acting for the common good.


— Definition by SERA Architects.



APPENDIX: WORKSHOP PRESENTATIONS



SOME OF CHESTNUT HILL'S COMMUNITY SYSTEMS




- governance
- education
- local economics
- public health
- resource management
- culture
- transportation
- food
- housing

GOVERNANCE



Town Hall



CHESTNUT HILL COMMUNITY ASSOCIATION
CHESTNUT HILL LOCAL

**Chestnut Hill Community Association
51 Non-Profit Institutions**


Interlocking Directories	
Aesthetic	Land Use Planning
Maintenance	Parks
Sidewalk/Street Closures	Street Trees
Traffic & Transportation	Zoning
Chestnut Hill Local	C. H. Preservation Development Fund

Staff


Operational	Physical	Social
Annual Meeting	Aesthetic	Blood Availability
Art & Design	Land Use Planning	Community Gardens
Neighborhood Events	Maintenance	Crime Prevention
Awards	Parks	Education
Dirt on Hand	Public Home Services	Health
Budget	Public Information	Business Post Offices
By Laws	Public Safety	Recreation
Legal	Recruitment	Manager
Local Management	Street Trees	Senior Citizens
Long Range Planning	Traffic & Transportation	Youth
Membership	Zoning	
Nominating		

Derived from organizational chart, Chestnut Hill Community Association, 2000-2005.

LOCAL ECONOMICS



Locally-owned florist



Locally-owned businesses



Farmers market



Locally-owned hardware store

RESOURCE MANAGEMENT



Solid waste material sold on the recycling market creates community capital for public environment improvements

APPENDIX

A-3

RESOURCE MANAGEMENT



Protecting natural capital:
The Wissahickon Creek Conservation Area.



Protecting urban capital:
Germantown Avenue



- FOOD COOPERATIVE
- PET SUPPLY STORE
- COMMUNITY DISCOUNT PROGRAM
- WEAVERS WAY RECYCLING PROGRAM
- MT. AIRY BIKE COLLECTIVE
- MARKETPLACE PROGRAM
- FARM EDUCATION PROGRAMS
- CSA with SAUL HIGH SCHOOL
- BUSINESS MENTORING YOUTH PROGRAM
- MONTHLY NEWSLETTER



CIVIC ECOLOGY



PHYSICAL CAPITAL

= MAKING SUSTAINABLE COMMUNITIES



FOR COMPARISON
Chestnut Hill



West Linn



WHY CIVIC?



The management of place depends on civic engagement and the performance of civic duties.

3 REQUIRES A NEW SOCIAL CONTRACT

Premise: The present social contract is dysfunctional and ineffective

- Liberal democracy
- Representative government
- Citizenship = Voting and paying taxes



PRINCIPLES Benefits Process Examples

“What shall we do when something has to be done that affects us all, we wish to be reasonable, yet we disagree on means and ends and are without independent grounds for making a choice?”

BENJAMIN BARBER – *“Strong Democracy”*

PRINCIPLES Benefits Process Examples

A NEW SOCIAL CONTRACT LINKING CITIZENS TO THEIR PLACE

- Action
- Publicness
- Necessity
- Choice
- Reasonableness
- Conflict
- No independent ground



Sustainable Future

PRINCIPLES Benefits Process Examples

4 MATCHES NEEDS AND CAPACITIES

Premise: All communities have problems and needs; all communities have assets and capacities to help address those problems and needs

- Civic Ecology defines needs
- Documents assets and capacities
- Creates adaptive systems to align capacities and needs



PRINCIPLES Benefits Process Examples

ASSESS YOUR NEEDS

WHAT NEEDS?

- Physical well-being
- Economic security
- Governance
- Social well-being
- Ecological health

WHOSE NEEDS?

- Individuals and households
- Business
- Government
- Institutions
- Non-profit organizations
- Utilities



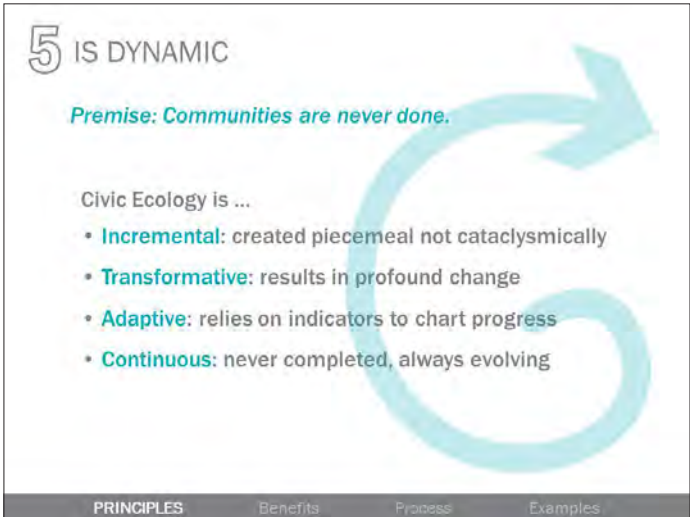
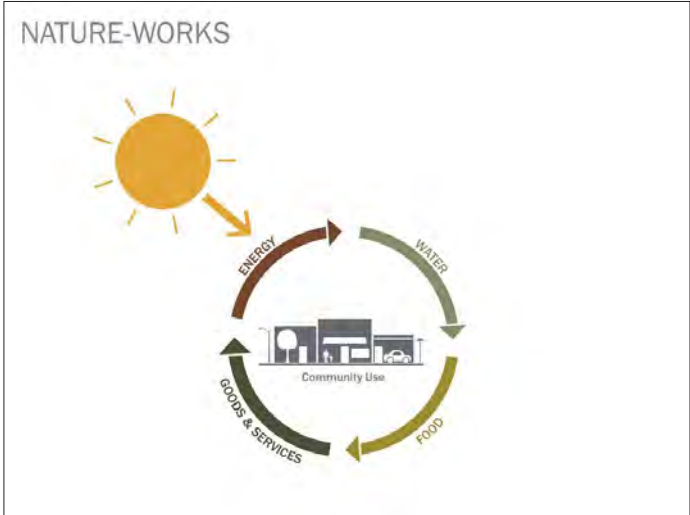
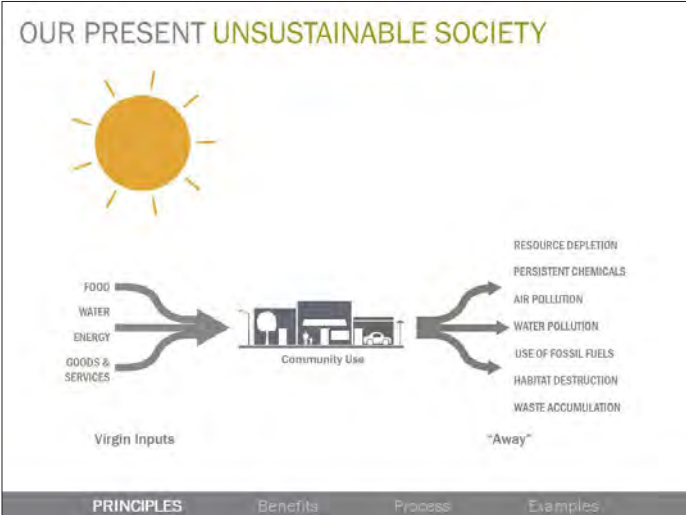
PRINCIPLES Benefits Process Examples

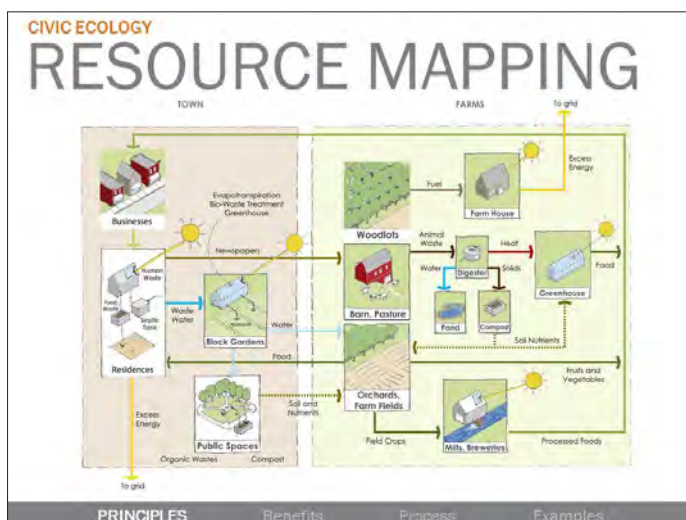
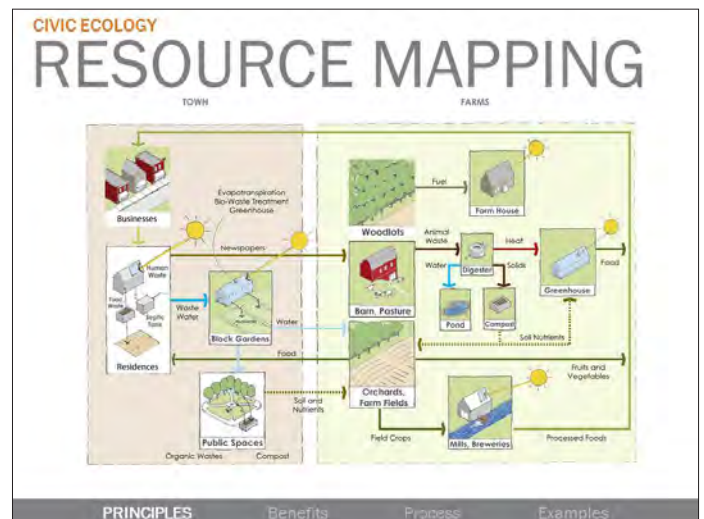
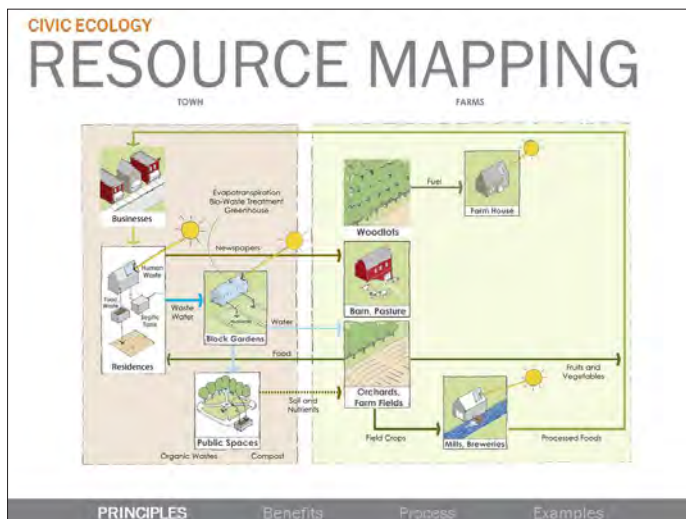
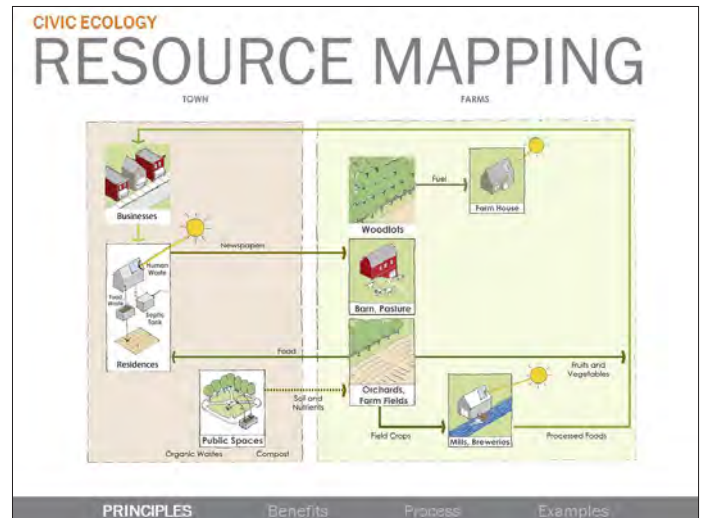
QUALIFY YOUR NEEDS



will satisfying them lead to a **sustainable** future?

PRINCIPLES Benefits Process Examples





5 BENEFITS OF CIVIC ECOLOGY

-  1. A high degree of ownership
-  2. Enduring wealth
-  3. A deep sense of community in place
-  4. An adaptive framework for sustainability
-  5. A living culture

Principles BENEFITS Process Examples

HOW DO WE START?




Principles BENEFITS Process Examples

A COMMUNITY MUST ASK ITSELF 5 CRITICAL QUESTIONS

- Where are we now?
- Where do we want to be in 10, 20, 50 years?
- How do we get where we want to be?
- How do we know if we are getting there?
- Who wants to help find out?

Principles BENEFITS Process Examples



Principles

Benefits

Process

Examples

Principles Benefits PROCESS Examples

PROCESS

A Civic Ecology process consists of the following CIVIC tasks:

- C**ONVENING STAKEHOLDERS
- I**NVESTIGATING THE COMMUNITY
- V**ISIONING
- I**MPLEMENTING THE VISION
- C**HARTING PROGRESS

Principles Benefits PROCESS Examples

CONVENING STAKEHOLDERS



Who wants to help?

- Civic Ecology working group: a broadly representative cross section of the community
- Make agreements on time commitment, rules of engagement
- Train civic ecology working group in systems thinking

Principles Benefits PROCESS Examples

APPENDIX: WORKSHOP PRESENTATIONS

investigate: where are we now?

Existing Conditions	System Conditions				Comments
	1. Take	2. Make	3. Respect	4. Choose	
Ecological					
Water			✓		
Energy	X				
Economic					
Business		✓			
Local Ownership					
Local Investment			✓		
Import Substitution	X				
Social					
Social Capital		✓			
Education				X	
Arts/Culture					

What is working? What is not?

Principles Benefits PROCESS Examples

vision: where do we want to be?

Existing Conditions	Vision Statements	Strategies
Ecological		
Water		
Energy		
Economic		
Business		
Local Ownership		
Local Investment		
Import Substitution		
Social		
Social Capital		
Education		
Arts/Culture		

Principles Benefits PROCESS Examples

IMPLEMENTING THE VISION

How do we get there?

- Create systems to achieve the vision
- Assign responsibilities
- Set timeframes

Principles Benefits PROCESS Examples

CHARTING PROCESS

How are we doing?

- Community indicators
- Monitor indicators
- Revise and adjust

"If you don't measure results, you can't tell success from failure. If you can't see success, you can't reward it. If you can't see failure, you can't correct it."

OSBORNE AND GAEBLER - "Reinventing Government"

Principles Benefits PROCESS Examples

Principles

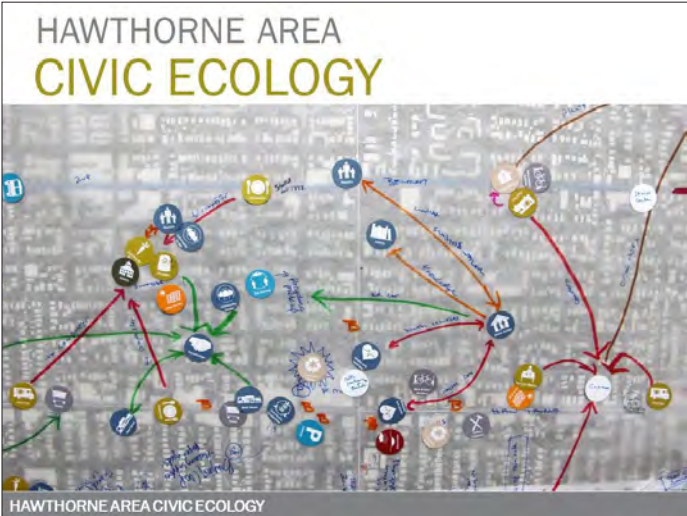
Benefits

Process

Examples

Principles Benefits PROCESS EXAMPLES





FLOW-MAP PROJECTS



SHORT TERM:
 Installation of more electric car charging stations
 Reclamation of streets for community uses
 Expansion of the From Our Yard CSA
 Development of a peer-to-peer parking program

LONG TERM:
 Formation of a buying cooperative to assist businesses with 'green' supplies
 District energy collaboration with Central Eastside District
 Carbon reduction strategies for Hawthorne Boulevard businesses
 Establishment of a community health cooperative

HAWTHORNE AREA CIVIC ECOLOGY

EVALUATION CRITERIA

RICHMOND

PROJECT	BARRIERS	ASSETS	HAS A CHAMPION	INVOLVES ALL ASPECTS OF COMMUNITY	HAS A TEAM	SOVES A COMMUNITY PROBLEM	HAS POTENTIAL PARTNERS	IS DOABLE	BENEFITS MULTIPLE N-HOODS	OTHER
COMMUNITY...	US
...
...
...
...
...
...
...
...
...

HAWTHORNE AREA CIVIC ECOLOGY

ECODISTRICTS

PSU Pilot

The PSU pilot EcoDistrict is envisioned to create a model that will guide future efforts in Portland and elsewhere, through a rich collaboration of the University, the City and other district residents and stakeholders.

University EcoDistrict Pilot Objectives:

1. establish a common basis for policy, investment, incentives, etc.
2. advance metrics, R&D agenda
3. create incentives for partnership & investment
4. facilitate multiple owner behavioral change



HAWTHORNE AREA CIVIC ECOLOGY


CIVIC ECOLOGY

Workshop at PSU




HAWTHORNE AREA CIVIC ECOLOGY

Institutional Planning



INSTITUTIONAL PLANNING: OREGON ZOO





INSTITUTIONAL PLANNING: OREGON ZOO



Community Supported Agriculture

EVALUATION CRITERIA	CATEGORIZATION & PRIORITIZATION
<p>Has a Champion Full part</p> <ul style="list-style-type: none"> • Executive • Community <p>Has a Team Yes (needs more)</p> <p>Has a Community Need <ul style="list-style-type: none"> • Provides local food • Builds a community around food • Builds agricultural skills • Includes an economic return </p> <p>Has Potential Partners <ul style="list-style-type: none"> • Farmers • Wholesalers • Schools • City/PAU • Community centers </p> <p>Is Diverse / Community Focused Yes</p> <p>Is Self-Sustaining Yes</p> <p>S.W.O.T. Analysis Impacts on Community <ul style="list-style-type: none"> • S - all of this about • W - Lots of organization needed • O - Rural location • T - Would it stimulate some business? </p> <p>Integrate with Other Projects <ul style="list-style-type: none"> • Educational Center • Campus • Community health center </p>	<p>Water Improves stream health and ground water quality by using sustainable agricultural practices</p> <p>Energy Energy generation generated from existing methane from farm waste?</p> <p>Food Sustainable: Small farm</p> <p>Waste Composting recycling & use for soil enhancement</p> <p>Local Economy Support local farming community</p> <p>Community Health Healthy food for all income levels</p> <p>Local Capital Building Yes, Farmers Markets</p>

DAMASCUS



DAMASCUS PROJECTS

Community Recycling Center

- Use waste as a resource
- Stimulate local wealth & job potential
- Produce energy from waste

DAMASCUS PROJECTS

Community Compost

- Start tomorrow!
- Educate and involve citizens
- Grow from site scale to large scale production

DAMASCUS PROJECTS

Social Networking

- Connect local people and skills
- Facilitate jobs
- Share knowledge and resources

DAMASCUS PROJECTS

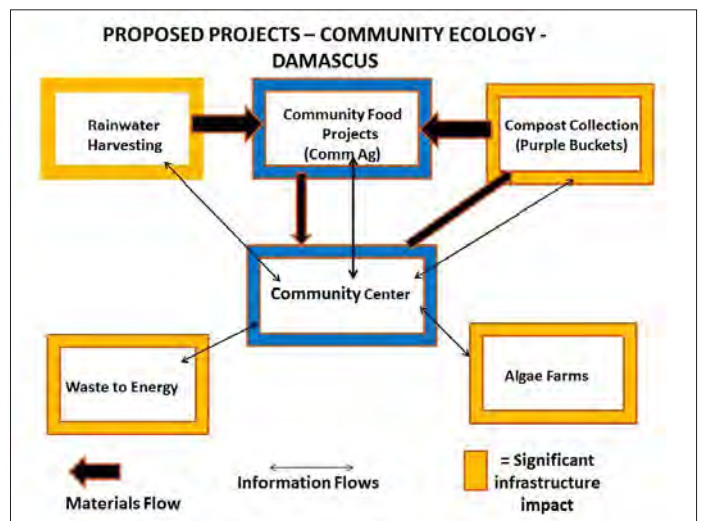
Community Center / City Hall

- Create a social 'hub' for community connections
- Provide a place for children, teens, and elders
- Locate in a repurposed building

DAMASCUS PROJECTS

Community Education Learning Center

- Connect local farmers to the community
- Generate a market of goods & services related to local farms
- Localize the economy



WORKSHOP INSTRUCTIONS

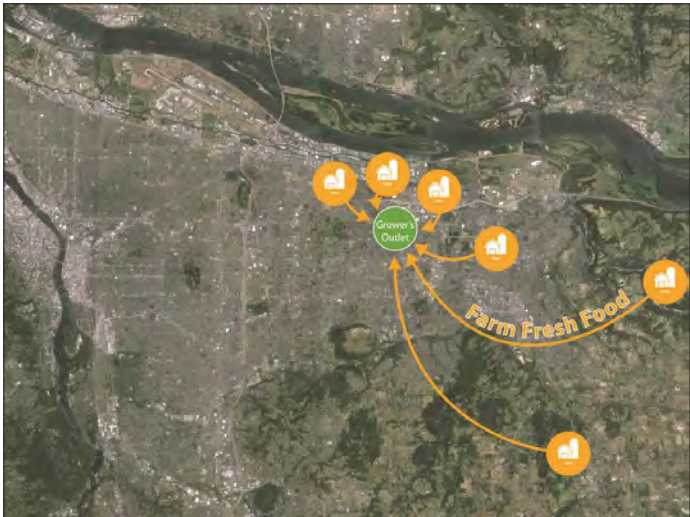
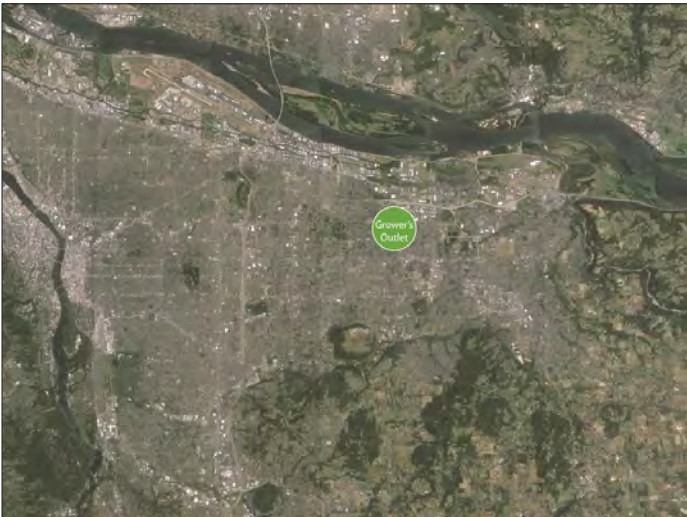
FLOW MAPPING WEST LINN

1. Use dots to identify existing resources
2. Draw "flows" between resources (be sure to label the flow/system)
3. Add dots where you would like to see a future resource
4. Draw more "flows" between resources to create more systems providing the things you'd like in your community
5. Repeat....



EXAMPLE RESOURCES

 Compost Food	 Park Culture/Social Capital	 Agriculture Economy
 Wind Energy Energy	 Housing Land Use	 Parking Transportation
 Recycling Waste	 Stormwater Water	 Education Information



APPENDIX: WORKSHOP PRESENTATIONS



WORKSHOP INSTRUCTIONS

Each table will report back on the following:

PART 1

- Community resource flows
- 2-3 projects including:

PART 2

- Low hanging fruit & BIHAGS
- Barriers & Assets
- Next Steps (Early Thinking)

SUSTAINABILITY THEMES

To get you thinking:

- Arts, Culture, & Heritage
- Built Environment
- Community Inclusion
- Economic Development
- Education
- Health & Food
- Natural Areas
- Recreation
- Transportation
- Materials Management
- Water

CIVIC ECOLOGY

*"Many of the root processes at work in **NATURAL ECOLOGIES** and our **ECONOMIES** are amazingly similar, and we can learn much about success and failure in our own arrangements by noticing, for example, that the more niches that are filled in a given natural ecology...the more efficiently it uses the energy it has at its disposal, and the richer it is in life and means of supporting life. Just so with our own economies: the more fully their various niches are filled, the richer they are in means for supporting life."*

JANE JACOBS - "Cities and the Wealth of Nations"

NEXT STEPS

PROJECT IDENTIFICATION/ EVALUATION WORKSHOP

April 19, 2014 – 1:00-5:00pm
Sunset Fire Hall

IMPLEMENTATION STRATEGIES WORKSHOP

May 31, 2014 – 1:00-5:00pm
Sunset Fire Hall




EVALUATION CRITERIA

RICHMOND

PROJECT	BARRIERS	ASSETS	HAS A CHAMPION	INVOLVES ALL ASPECTS OF COMMUNITY	HAS A TEAM	SOVES A COMMUNITY PROBLEM	HAS POTENTIAL PARTNERS	IS DOABLE	BENEFITS MULTIPLE HOODS	ORIENT
Community's Center	Handwritten notes	Handwritten notes	US	Handwritten notes	Handwritten notes	Handwritten notes	Handwritten notes	Handwritten notes	Handwritten notes	Handwritten notes
Public Art	Handwritten notes	Handwritten notes	Handwritten notes	Handwritten notes	Handwritten notes	Handwritten notes	Handwritten notes	Handwritten notes	Handwritten notes	Handwritten notes
Mass-Based Community Credit Union	Handwritten notes	Handwritten notes	Handwritten notes	Handwritten notes	Handwritten notes	Handwritten notes	Handwritten notes	Handwritten notes	Handwritten notes	Handwritten notes
Handwritten notes	Handwritten notes	Handwritten notes	Handwritten notes	Handwritten notes	Handwritten notes	Handwritten notes	Handwritten notes	Handwritten notes	Handwritten notes	Handwritten notes

WORKSHOP SUMMARY MEMO



Executive Summary


Hawthorne Area Civic Ecology (HACE)

HACE is a working model of participatory planning that involves community members in the process of identifying, planning, and implementing community improvement projects. HACE is a community-driven process that is designed to be replicable in other neighborhoods. HACE is a process that is designed to be replicable in other neighborhoods. HACE is a process that is designed to be replicable in other neighborhoods.



The HACE model is designed to be replicable in other neighborhoods. HACE is a process that is designed to be replicable in other neighborhoods. HACE is a process that is designed to be replicable in other neighborhoods.

THANK YOU!



Questions / More Information:

Timothy Smith
Principal, Urban Design and Planning
SERA Architects
tims@serapdx.com

Ben Weber
Urban Planner
SERA Architects
benw@serapdx.com

Erin Reome
Urban Planner
SERA Architects
erin@serapdx.com

serapdx.com



SUSTAINABLE WEST LINN STRATEGIC PLAN UPDATE

Civic Ecology Workshop #2
April 19, 2014



AGENDA

APRIL 19, 2014
Sunset Fire Hall

1:00pm	Welcome and Workshop Overview
1:15pm	Civic Ecology Briefing
1:30pm	Progress Update Since Workshop #1
1:40pm	Exercise #1: Project Definition
	- Review Neighborhood Projects
	- Identify Projects Moving Forward
	- Evaluate Projects with Criteria Matrix
3:00pm	Break
3:15pm	Reconvene and Report-Out
3:40pm	"Horse Trading" – Identify Project Commonalities
4:00pm	Straw Poll Voting and Results
4:20pm	Implementation Next Steps
4:45pm	Q&A and Wrap-Up



Sustainable West Linn Strategic Plan

July 2008

Making life better for all living things, ourselves, and our children.

WEST LINN IS A GREAT PLACE TO LIVE.
Let's make it even better – together.

Do you have an idea to improve your community, but don't know how to make it happen? Now you can share your ideas, be heard, and help create your ideal West Linn in a fun afternoon with your neighbors.

Usually, community planning is left to "professionals". Now, the 3 part workshops, open houses and exercises to turn everyone – younger and older – into empowered citizen planners. Together, we'll brainstorm your and your neighbors' best ideas for creating a prosperous future for West Linn – and then learn how to make them happen.

We need as many voices, visions, and ideas as possible.

SATURDAY WORKSHOP DATES:
4/19/14 1 pm - 5 pm @ Sunset Fire Hall
5/31/14 1 pm - 5 pm @ Sunset Fire Hall

presented by: **THE WEST LINN SUSTAINABILITY ADVISORY BOARD**

Thank you to our sponsors!

West Linn MARKET-CHOICE SERA

For more info go to westlinnoregon.gov/sustainability

DELICIOUS SNACKS PROVIDED!




+


CIVIC ECOLOGY PHYSICAL CAPITAL

= MAKING SUSTAINABLE COMMUNITIES

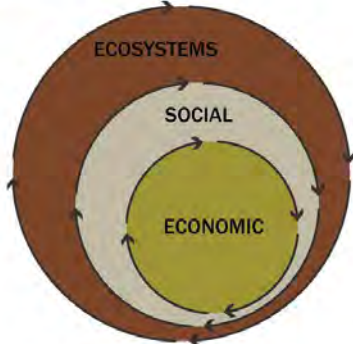


WHY CIVIC?



The management of place depends on civic engagement and the performance of civic duties.

WHY ECOLOGY?



The web-like pattern of relations between humans, their ecosystem and the economy in a particular place constitutes a human-natural ecosystem.

CIVIC ECOLOGY IS A



“LEARNING ECOLOGY”

...it adapts in response to culture, values and consciousness

5 PRINCIPLES

- 1 Employs a whole systems approach
- 2 Focuses on place
- 3 Requires a new social contract
- 4 Matches needs and capacities
- 5 Is dynamic



An EcoDistrict is animated by its 'Civic Ecology'. Civic Ecology is the integrated web of energy, nutrient, resource, financial, information and cultural flows, envisioned, created and managed by citizens acting for the common good.

PRINCIPLES Benefits Process Examples

5 BENEFITS OF CIVIC ECOLOGY

1. A high degree of ownership
2. Enduring wealth
3. A deep sense of community in place
4. An adaptive framework for sustainability
5. A living culture

PRINCIPLES BENEFITS Process Examples

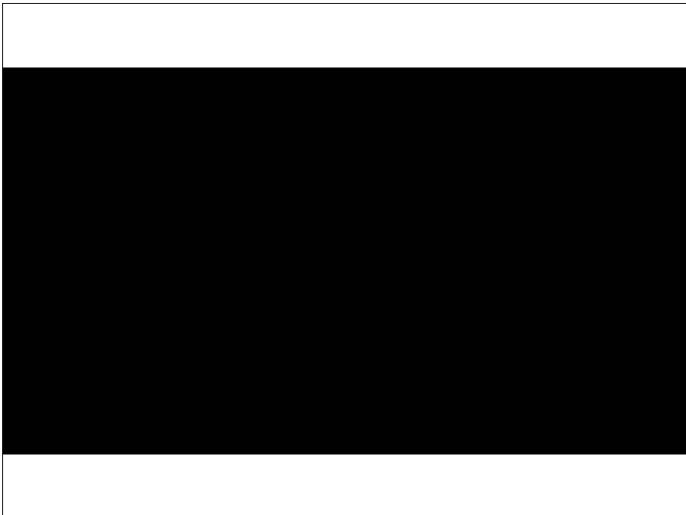
PROCESS

A Civic Ecology process consists of the following CIVIC tasks:

- C ONVENING STAKEHOLDERS
- I NVESTIGATING THE COMMUNITY
- V ISIONING
- I MPLEMENTING THE VISION
- C HARTING PROGRESS

You are here! →

PRINCIPLES Benefits PROCESS Examples



Community Supported Agriculture

EVALUATION CRITERIA	CATEGORIZATION & PRIORITIZATION
<p>Was a Champion Full yet</p> <ul style="list-style-type: none"> • Farmers • Consumers <p>Plan & Start Yes / needs assist</p> <p>Was a Community Need</p> <ul style="list-style-type: none"> • Provides fresh local food • Is sustainable • Builds a community around food • Builds agricultural skills • Includes all income levels <p>Was Potential Partners</p> <ul style="list-style-type: none"> • Farmers • Buyers • Local restaurants • Schools • DMU / PSU • Community centers <p>Is Diverse / Economy Resilient Yes</p> <p>Is Self-Sustaining Yes</p> <p>SWOT Analysis Impacts on Community</p> <ul style="list-style-type: none"> • S - all of this about • W - Lots of organization needed • O - local conditions • T - Would it stimulate some farmers? <p>Integrate with Other Projects</p> <ul style="list-style-type: none"> • Educational Center • Community • Community health issues 	<p>Water Depends on health and general water quality to using a sustainable agricultural practices</p> <p>Energy Is high generation potential from existing resources from local assets?</p> <p>Food Sustainable local food</p> <p>Waste Improve composting & use for soil enhancement</p> <p>ECON Economy Support local farming community</p> <p>Community Health Healthy food for all income levels</p> <p>Social Capital Building Yes, Farmers Markets</p>

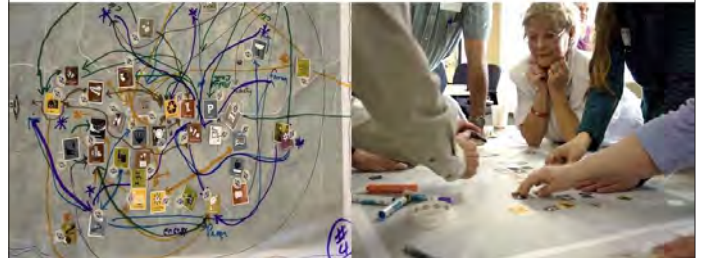
DAMASCUS



DAMASCUS PROJECTS

Community Center / City Hall

- Create a social 'hub' for community connections
- Provide a place for children, teens, and elders
- Locate in a repurposed building



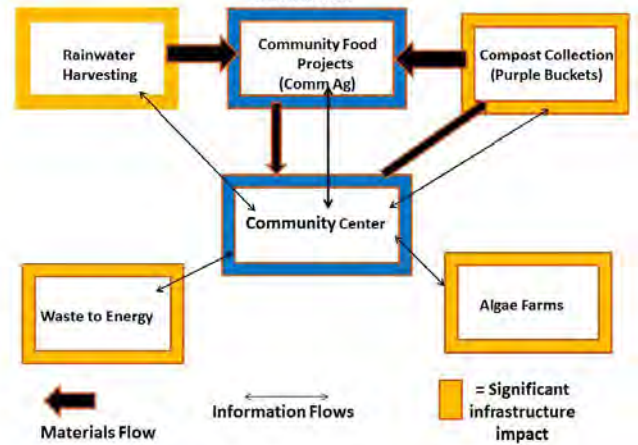
DAMASCUS PROJECTS

Community Education Learning Center

- Connect local farmers to the community
- Generate a market of goods & services related to local farms
- Localize the economy



PROPOSED PROJECTS – COMMUNITY ECOLOGY - DAMASCUS



WORKSHOP INSTRUCTIONS

FLOW MAPPING WEST LINN

1. Use dots to identify existing resources
2. Draw "flows" between resources (be sure to label the flow/system)
3. Add dots where you would like to see a future resource
4. Draw more "flows" between resources to create more systems providing the things you'd like in your community
5. Repeat....

Group 1 Project Ideas

Low-Hanging Fruit

- Boskey Dell Nursery – Stream Restoration
- City-wide Garage sale



Big Hairy Audacious Goals

- Tool Exchange/ Sharing Library
- Knowledge and skills exchange



APPENDIX: WORKSHOP PRESENTATIONS

Group 2 Project Ideas

Low-Hanging Fruit

- Compost Center and Community Gardens

Big Hairy Audacious Goals

- Micro-community/ Living Village
- Social Capital, Identity, Community Connection





Group 3 Project Ideas

Low-Hanging Fruit

- Year-round farmers market
- Artist co-op
- Schools and sustainability labs

Big Hairy Audacious Goals

- Local transit: connect ACC, neighborhoods, and retail
- Affordable housing near transit

Group 4 Project Ideas

Low-Hanging Fruit

- Expand and improve food pantry
- Vacant lots → Community Gardens

Big Hairy Audacious Goals

- Redevelop police station area with mixed housing, year-round market, and other amenities




Group 5 Project Ideas

Low-Hanging Fruit

- Community Gardens
- Fruit-Gathering Co-op
- Tool Library

Big Hairy Audacious Goals

- Eco Art District
- Eco-Jitney Transit
- Local currency or time bank
- "garden community instead of a bedroom community"




Group 6 Project Ideas

Low-Hanging Fruit

- Community Co-op
 - Tool/skill sharing
 - Barter economy
 - Health care network

Big Hairy Audacious Goals

- District Energy Center
 - Solar at W.L.H.S.
 - Microgenerators on river
 - Tanner Creek Park wind farm






TABLE EXERCISE: PROJECT DEFINITION

- Re-visit previous project ideas
- Identify projects not mentioned in write-up
- Identify new ideas for projects
- Develop a few project ideas – fill out the Evaluation Criteria matrix for each project idea

PROJECT	STARTS	ASSOS	HAS A CHAMPION	OWNERS ALL ASPECTS OF COMMUNITY	HAS A TEAM	SOVEREIGN DOMINANCE	HAS POTENTIAL PARTNERS	IS DOABLE	BENEFITS MULTIPLE SECTORS
Build community			✓	✓				✓	

EVERYONE EXERCISE: PROJECT IMPLEMENTATION & COMMITMENTS

EVALUATION CRITERIA

PROJECT	BARRIERS	ASSETS	HAS A CHAMPION	INVOLVES ALL ASPECTS OF COMMUNITY	HAS A TEAM	SOVES A COMMUNITY PROBLEM	HAS POTENTIAL PARTNERS	IS DOABLE	BENEFITS MULTIPLE N'HOODS	THE NATURAL STEP

EVALUATION CRITERIA RICHMOND

PROJECT	BARRIERS	ASSETS	HAS A CHAMPION	INVOLVES ALL ASPECTS OF COMMUNITY	HAS A TEAM	SOVES A COMMUNITY PROBLEM	HAS POTENTIAL PARTNERS	IS DOABLE	BENEFITS MULTIPLE N'HOODS	THE NATURAL STEP
Community's Center	Cost	Local business	US	Local business	Local business	Local business	Local business	Local business	Local business	Local business
Public Art	Artists	Artists	Artists	Artists	Artists	Artists	Artists	Artists	Artists	Artists
Mass-Based Community Credit Union	Community	Community	Community	Community	Community	Community	Community	Community	Community	Community

EVERYONE EXERCISE: CATEGORIZATION & PRIORITIZATION

- Each team - briefly present your project ideas and tell the group which projects have strong support and Evaluation Criteria rankings
- Each team decides which projects to move forward
- All attendees - vote on the projects you would like to see move forward

How Wolves Change Rivers

sustainablelinn.org

CIVIC-PUBLIC-PRIVATE PARTNERSHIP

Public Civic Private

IMPLEMENTATION: CIVIC-PUBLIC-PRIVATE PARTNERSHIP

The Committee for the Future of Damascus

www.futureofdamascus.org

We are seeking a farmer's market in Damascus!

Wanted: one more board member

Interested in serving your community? Want to help shape the direction of Damascus in a way that makes a long-term impact? Interested in helping start up a new community center, promoting local agriculture, sending less garbage to the landfill, and generally increasing a more sustainable way of life in and around Damascus?

If so the CFD wants you! We recently elected our board members, but we would love to have one more board member to help provide visionary direction to our newly re-empowered non-profit organization. Resolutions are now open. The board currently meets monthly, generally the 3rd Thursday evening of the month (approx 6pm). If you are interested, or would like to nominate somebody you think might be, please simply reply to this email with basic contact information, and a single statement of why you or your nominee might be a good board member.

If you are not yet a member of the CFD, please [click here](#) and take a moment to sign up while membership is still free! Feel free to forward this email to anybody you think may be interested in a Damascus that is more sustainable, ecologically, socially.

IMPLEMENTATION: CIVIC-PUBLIC-PRIVATE PARTNERSHIP

APPENDIX: WORKSHOP PRESENTATIONS

IOBY

about | blog | help | SIGN UP | LOG IN | Search ioby.org

ioby *Now in your backyard*

ioby brings environmental projects to life, block by block.

see our progress | get started

The wait is over.

ioby is now national.

IMPLEMENTATION: IOBY

Birds Chirping Rather Than Gunshots

The BRONX FOOD JUSTICE League

MARCHING TO THE BEET' Garden Beautification & Performance Art Project

PUEBLOTE: Transforming Underutilized Public Lots Into Public Benefits

135th Street Beautification Project

2012 Brooklyn Food Conference

5 Cent Recycling Campaign

IMPLEMENTATION: IOBY

Shareconomy

Creating value-based, value-measured, community-centered economy

Based on three foundational values

- Grassroots democracy
- Social Justice | Equity
- Ecology

The Shareconomy is a toolkit to help enable community members to get to know each other, self-design & fund their own resilient community in ongoing virtuous cycles.

Community Good

Community Stories: Community building, Community knowledge, Community collaboration

Civic Ecology: Community self-design, Impacts of self-reliance, Move from social to infrastructure

Share Fund: Financial Capital, Essential Capital, Alternative Capital

Share-Base: Ideas, Plans, teams, projects, services, new businesses, Value-based metrics

Equity Toolkit: Collaborative Financing, Building Resilience, Legal Resources

Incentives for Business Development: Share Economy, Share Economy, Share Economy

Tools Bank of Resources: All community

Community Association

Available, Jobless + Consultants

Shareconomy: Community • Equity • Ecology

IMPLEMENTATION: SHAREECONOMY

trovi connect

trovi is a local commerce search engine |

trovi empowers customers to request what they want | when + where they want it | in the price range they want | how badly they want it + other criteria...

...then connects them directly to local products | services that match their request.

[trovi's purpose is to grow local wealth]

IMPLEMENTATION: trovi

trovi connect

trovi is a purpose-driven company: grow local wealth |

- When local business thrives \$ stays + multiplies in community.
- Community associations sign up business + customers | trovi shares 25% of profits with the community.

25% share

- 5% Business & neighborhood associations
- 20% Community Share Fund

IMPLEMENTATION: trovi

ecoapprentice

Where Sustainability Questions Get Solved

recent ecochallenge: Recycling, LLC

recent ecosolution: Garden Furniture

What is ecoapprentice?

- A business opportunity
- A place to partner on ideas
- A way to learn skills

Featured Partner: TERRACIRCLE

Featured Member: green matters

IMPLEMENTATION: ecoapprentice

ecoapprentice

Matching Challenges with Solutions

Current EcoChallenges

- Reuse 60,000 Tons Of Urban Wood
Challenges: Greenway Recycling, LLC
Eco-Webster
- Automotive Glass Recycling
Challenges: Curious One
Justice Strawnman
- Reuse Of Industrial Waste Water And Sludge
Challenges: Strategic Advisory
Department For Columbia Gas
Justin Strawnman
- Bicycle Helms Recycled?
Challenges: School Of Life
Department For Columbia Gas
Justin Strawnman
- Recycling Squeegee Through Trash
Challenges: Terry Cypri
Missy Gosink
- Eco Friendly Piles And Promotions
Challenges: Eugene Water And Electric Board
Department For Eugene Water And Electric Board
Dustin Patten
- Recap Paving, From
Challenges: Terra Design, LLC
Department For Terra Design, LLC
Luka Wetters

Current EcoSolutions

- Green Furniture
Challenges: The Thriftful
Escalator Rains Reuse
Department For The Thriftful
Escalator Rains Reuse
Tara Ben Bassett
- 3 Solutions Flood And Power
Challenges: Green Dry Season Cover
Department For Green Dry Season Cover
Dustin Patten
Jeffrey Hodgins
- Link With Commercial Composting Services
Challenges: The Green Connection
Department For The Green Connection
Dustin Patten
Michael Holsman
- Donate Extra Soap To Homeless Shelters
Challenges: No Soap On A Rope
Department For No Soap On A Rope
Dustin Patten
Wes Schwab
- Keep Standard Bulbs For Special Uses
Challenges: The Children's What To Do With Old Light
Department For The Children's What To Do With Old Light
Dustin Patten
Christy Trank
- Carpet Recycling Reuse
Challenges: The Green Connection
Department For The Green Connection
Dustin Patten
Sara Kibler
- Fabricate New Housing From
Challenges: Terra Design, LLC
Department For Terra Design, LLC
Luka Wetters

IMPLEMENTATION: ecoapprentice

LIVING CULLY ECODISTRICT

PARTNERS

PROJECTS

Cully Park: built with volunteer labor

Tribal Gatherings

Rehabilitated Affordable Housing

IMPLEMENTATION: LIVING CULLY ECODISTRICT (PORTLAND, OR)

Ready to launch an ecodistrict in your city? Start here.

EcoDistricts INCUBATOR MAY 7-9 | PORTLAND, OR

ECODISTRICTS FRAMEWORK

ECODISTRICTS TRAININGS

ECODISTRICTS TARGET CITIES

NEXT STEPS

IMPLEMENTATION STRATEGIES WORKSHOP

May 31, 2014 - 1:00-5:00pm
Sunset Fire Hall

WEST LINN IS A GREAT PLACE TO LIVE. Let's make it even better - together.

Do you have an idea to improve your community, but don't know how or make it happen? Now you can share your ideas, be heard equally, and help create your ideal West Linn in a fun afternoon with your neighbors.

Usually community planning is left to "professionals". Now, this 3 part workshop uses games and exercises to turn everyone - younger and older - into empowered citizen planners. Together, we'll brainstorm your and your neighbors' best ideas for creating a prosperous future for West Linn - and then learn how to make them happen.

We need as many voices, visions, and ideas as possible.

DELICIOUS SNACKS PROVIDED!

SATURDAY WORKSHOP DATES:
4/19/14 1 pm - 5 pm @ Sunset Fire Hall
5/31/14 1 pm - 5 pm @ Sunset Fire Hall

Presented by: THE WEST LINN SUSTAINABILITY ADVISORY BOARD

Thank you to our sponsors:

West Linn MARKET=CHOICE

For more info go to westlinnreg.gov/sustainability

IMPLEMENTATION NEXT STEPS

- Be clear what the project is
 - Problem definition and goals
 - Benefits to the community
- Build a budget for the project
- If budget is too large, split at a natural place
- Identify the project duration
 - One year
 - Two year
 - Multi-year
- Get agreement on steps 1-4, then...
- Do funding research
 - PSU Non-Profit Institute students
 - Community assets in the grants world
 - Public sector resources: City of Portland, PoSI, Metro,...
 - Civic Venture Capital Fund
 - Other?
- Create a business plan

THANK YOU!

Questions / More Information:

Timothy Smith
Principal, Urban Design and Planning
SERA Architects
tims@serapdx.com

Ben Weber
Urban Planner
SERA Architects
benw@serapdx.com

serapdx.com



SUSTAINABLE WEST LINN STRATEGIC PLAN UPDATE



Civic Ecology Workshop #3
May 31, 2014



AGENDA

MAY 31, 2014
Sunset Fire Hall

1:10pm	Welcome and Introductions
1:25pm	Civic Ecology → Sustainability Plan Update
1:40pm	Summary of Workshops #1 and #2 <ul style="list-style-type: none"> - Flow maps and Evaluation Criteria - Summary of project ideas - Pick 4-6 focus projects
2:15pm	Group Exercise: Project Development (add details) <ul style="list-style-type: none"> - Timeframe and time needed - What are the first steps? - Who leads? Who helps?
3:45pm	Report Back Implementation Strategies (Tim Smith to guide) Next Steps (Ensure everyone leaves knowing what they are doing)



Sustainable West Linn Strategic Plan

July 2008

Making life better for all living things, ourselves, and our children.

WEST LINN IS A GREAT PLACE TO LIVE.
Let's make it even better - together.

Do you have an idea to improve your community, but don't know how to make it happen? Now you can bring your ideas to heart, soul, and help create your ideal West Linn in a fun afternoon with your neighbors.

Usually, community planning is left to "professionals". Now, the 3 part workshops, city games and exercises to turn everyone - younger and older - into empowered citizen planners. Together, we'll brainstorm your and your neighbors' best ideas for creating a prosperous future for West Linn - and then learn how to make them happen.

We need as many voices, visions, and ideas as possible.

SATURDAY WORKSHOP DATES:
4/19/14 1 pm - 5 pm @ Sunset Fire Hall
5/31/14 1 pm - 5 pm @ Sunset Fire Hall

presented by: **THE WEST LINN SUSTAINABILITY ADVISORY BOARD**

Thank you to our sponsors!

West Linn MARKET OF CHOICE SERRA

For more info go to westlinnoregon.gov/sustainability

DELICIOUS SNACKS PROVIDED!




CIVIC ECOLOGY + **PHYSICAL CAPITAL**

= MAKING SUSTAINABLE COMMUNITIES



WHY CIVIC?



The management of place depends on civic engagement and the performance of civic duties.

WHY ECOLOGY?

The web-like pattern of relations between humans, their ecosystem and the economy in a particular place constitutes a human-natural ecosystem.

CIVIC ECOLOGY IS A

“LEARNING ECOLOGY”

...it adapts in response to culture, values and consciousness

5 PRINCIPLES

- 1 Employs a whole systems approach
- 2 Focuses on place
- 3 Requires a new social contract
- 4 Matches needs and capacities
- 5 Is dynamic

An EcoDistrict is animated by its 'Civic Ecology'. Civic Ecology is the integrated web of energy, nutrient, resource, financial, information and cultural flows, envisioned, created and managed by citizens acting for the common good.

PRINCIPLES Benefits Process Examples

5 BENEFITS OF CIVIC ECOLOGY

1. A high degree of ownership
2. Enduring wealth
3. A deep sense of community in place
4. An adaptive framework for sustainability
5. A living culture

PRINCIPLES BENEFITS Process Examples

EVALUATION CRITERIA

1

PROJECT	BARRIERS	ASSETS	HAS A CHAMPION	INVOLVES ALL ASPECTS OF COMMUNITY	HAS A TEAM	SOVES A COMMUNITY PROBLEM	HAS POTENTIAL PARTNERS	IS DOABLE	BENEFITS MULTIPLE W/ WOODS	THE NATURAL STEP
<p>1. Project: EcoDistrict</p> <p>2. Barriers: Lack of funding, lack of community buy-in, lack of political support.</p> <p>3. Assets: Strong leadership, diverse community, existing infrastructure.</p> <p>4. Has a Champion: Yes, [Name]</p> <p>5. Involves All Aspects of Community: Yes, through various committees.</p> <p>6. Has a Team: Yes, multi-disciplinary.</p> <p>7. Solves a Community Problem: Yes, addressing local issues.</p> <p>8. Has Potential Partners: Yes, local businesses and organizations.</p> <p>9. Is Doable: Yes, with proper planning.</p> <p>10. Benefits Multiple W/ Woods: Yes, environmental and social benefits.</p> <p>11. The Natural Step: Yes, aligning with natural processes.</p>										

EVALUATION CRITERIA

2

PROJECT	BARRIERS	ASSETS	HAS A CHAMPION	INVOLVES ALL ASPECTS OF COMMUNITY	HAS A TEAM	SOVES A COMMUNITY PROBLEM	HAS POTENTIAL PARTNERS	IS DOABLE	BENEFITS MULTIPLE W/ WOODS	THE NATURAL STEP
<p>1. Project: EcoDistrict</p> <p>2. Barriers: Lack of funding, lack of community buy-in, lack of political support.</p> <p>3. Assets: Strong leadership, diverse community, existing infrastructure.</p> <p>4. Has a Champion: Yes, [Name]</p> <p>5. Involves All Aspects of Community: Yes, through various committees.</p> <p>6. Has a Team: Yes, multi-disciplinary.</p> <p>7. Solves a Community Problem: Yes, addressing local issues.</p> <p>8. Has Potential Partners: Yes, local businesses and organizations.</p> <p>9. Is Doable: Yes, with proper planning.</p> <p>10. Benefits Multiple W/ Woods: Yes, environmental and social benefits.</p> <p>11. The Natural Step: Yes, aligning with natural processes.</p>										

West Linn Garden Team

Community Benefit

- Builds community skills and beauty; food resiliency

Assets

- Large potential lots
- Population of experienced gardeners

Barriers

- Startup costs; hilly/rocky land

Champions/Partners

- Farmers Market
- Nurseries
- Schools and businesses

Support

- Groups 2, 5




West Linn Co-op

Community Benefit

- Access to local food, services, tools, training, etc.

Assets

- Skilled local population
- Combinable with other projects

Barriers

- Startup costs/staffing
- Location challenges

Champions/Partners

- WLHS Green Team
- 19th Street Farm
- Chamber of Commerce

Support

- Groups 3, 5




Local Transportation

Community Benefit

- Mobility options for elderly, children, and others
- Links disparate nodes in W.L.

Assets

- Support from businesses
- Potential tie-in with TriMet

Barriers


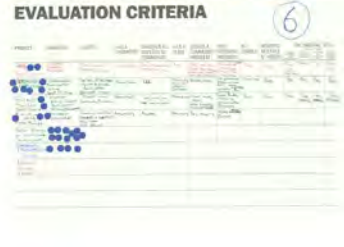
- Capital and operating costs
- Will require complex partnerships

Champions/Partners

- Chamber of Commerce
- City of West Linn
- Paula!!!

Support

- Groups 3, 5, 6

Hydro Water Turbine

Community Benefit

- Energy security
- Low-carbon energy

Assets

- Proximity of flowing water and existing energy infrastructure

Barriers


- Expensive and technically challenging

Champions/Partners

- City of West Linn
- Energy Trust

Support

- Group 4




Fruit Tree Co-op

Community Benefit

- Food security; access to healthy food

Assets

- Abundance of fruit trees

Barriers

- Distribution methods
- Promoting sustainable harvesting

Champions/Partners

- Food pantry
- Portland Fruit Tree Project
- 4-H; Schools

Support

- Group 4, 5




Farmers Market

Community Benefit

- Creates a community place
- Local economy and food resilience

Assets

- Potential siting at former police station
- Guidance from O.C. Farmers Market

Barriers

- Parking; accessibility; seasonality

Champions/Partners

- Farmers; Food Pantry
- Artists, vendors, craftspeople

Support

- Groups 4, 6




Solar Energy Pilots

- Community Benefit**
 - Low carbon energy
 - Education/job opportunity
- Assets**
 - Available open spaces and rooftops for installation
- Barriers**
 - Expense and technological requirements
- Champions/Partners**
 - Solar Oregon
 - Energy Trust
 - Schools
 - Utilities?
- Support**
 - Group 6



Sustainability Team

- Community Benefit**
 - Grassroots sustainability efforts
- Assets**
 - Students/teachers
 - STEM-aligned
 - PTAs
- Barriers**
 - Bureaucracy
- Champions/Partners**
 - Clare!!!
 - Future NPO Earthkeepers
- Support**
 - Group 3



FOCUS YOUR EFFORTS

What 4-6 projects are you, as a group, excited by and want to spend today developing?

THINGS TO THINK ABOUT

- When can the project start?
- How long will it take to get going? How long will the project last?
- Resource needs: money, labor, skills, partnerships
- Who can help and what skills do we need? Grant writers, community leaders, business partners....
- What are the Low-Hanging Fruit steps to take first that will lead to Big Hairy Audacious Goals?
- How does this benefit the community?

NEXT STEPS FOR EVERYONE HERE

- Put ALL the project ideas in your Sustainability Plan – provide details on the strongly-supported ideas
- Build support for the projects
 - Promote West Linn Sustainability Projects at various community events
 - Target organizations and people who can and want to help
 - Spread the word! Go to where people already are

GET YOUR PROJECT GOING

1. Be clear what the project is
 - a) Problem definition and goals
 - b) Benefits to the community
2. Build a budget for the project
3. If budget is too large, split at a natural place
4. Identify the project duration
 - a) One year
 - b) Two year
 - c) Multi-year
5. Get agreement on steps 1-4, then...
6. Do funding research
 - a) PSU Non-Profit Institute students
 - b) Community assets in the grants world
 - c) Public sector resources: City of Portland, PoSI, Metro...
 - d) Civic Venture Capital Fund
 - e) Other?
7. Create a “civic” plan

BUILD YOUR CIVIC PLAN

1. Articulate your mission
2. Describe the project/solution; set goals
3. Explain why it will work
4. Explain how it will help the community
5. Identify the team
6. Describe how you will build support
7. Identify strengths and weaknesses; be realistic about opportunities and challenges
8. Develop a funding/resources strategy
9. Establish progress measurements

CIVIC-PUBLIC-PRIVATE PARTNERSHIP

IMPLEMENTATION: CIVIC-PUBLIC-PRIVATE PARTNERSHIP

IMPLEMENTATION: CIVIC-PUBLIC-PRIVATE PARTNERSHIP

IMPLEMENTATION: IOBY

IMPLEMENTATION: IOBY

Shareconomy

Creating value-based, value-measured, community-centered economy

Based on three foundational values

- Grassroots democracy
- Social Justice | Equity
- Ecology

The Shareconomy is a toolkit to help enable community members to get to know each other, self-design & fund their own resilient community in ongoing virtuous cycles.

IMPLEMENTATION: SHAREECONOMY

[trovi is a local commerce search engine]

trovi empowers customers to request what they want | when + where they want it
| in the price range they want | how badly they want it + other criteria...

...then connects them directly to local products | services that match their request.

[trovi's purpose is to grow local wealth]

IMPLEMENTATION: trovi

[trovi is a purpose-driven company: grow local wealth]

1. When local business thrives \$ stays + multiplies in community.
2. Community associations sign up business + customers | trovi shares 25% of profits with the community.

25% share

- 5% Business & neighborhood associations
- 20% Community Share Fund

IMPLEMENTATION: trovi

Where Sustainability Meets Business. ecochallenges → ecosolutions → sustainability

Find new ways to do business that's both eco-friendly and profitable.

recent ecochallenge: **Reuse 40,000 Tons Of Screen Wood** (Greenwood Recycling, LLC)

recent ecosolition: **Garden Furniture** (EcoSolve Reuse Solutions)

What is ecoapprentice?

- A business opportunity**: Add to your business's positive impact and PR by requesting green resources at no additional cost or low cost. A small amount of your time and effort can go a long way.
- A place to partner on ideas**: We'll help you find the right partner for your idea. We'll provide you with a list of potential partners for your idea.
- A way to learn skills**: Working with a local business provides you with a real-world, hands-on learning experience. You'll gain valuable skills and knowledge that you can use in your own business.

IMPLEMENTATION: ecoapprentice

Matching Challenges with Solutions

Current EcoChallenges	Current Ecosolutions
Reuse 40,000 Tons Of Screen Wood Organizer: Greenwood Recycling, LLC, Eric Westland	Garden Furniture Organizer: EcoSolve Reuse Solutions, Tamara Ben Bassat
Automotive Glass Recycling Organizer: Outside Use, Jennifer Stansman	7 Solutions Found And Proven Organizer: Drop In Central Mexico, Cristian Gomez, Jeffrey Higgins
Reuse Of Industrial Waste Water And Sludge Organizer: EcoSolve Reuse Solutions, Peter Strongman	Link With Commercial Composting Service Organizer: Composting The Loop On, Richard Barbone
Bicycle Helmets Recycled? Organizer: Street Of Life, Jason Joplin	Donate Extra Soap To Homeless Shelters Organizer: EcoSolve Reuse Solutions, Steve Schwartz
Repaired, Reused, Reup Patch Organizer: Terra Cycle, Sherry Green	Keep Standard Bulbs For Reuse/Reuse Organizer: What To Do With Old Light Bulbs?, Crissy Trank
Eco Friendly Pallets And Pallets Organizer: Engine Water And Action Board, Kevin D. Smith	Carpet Recycling Resources Organizer: Carpet Recycling, Save Color
Scrap Fabric, Foam Organizer: Terra Cycle, Luke Walters	Fabricate New Housing Organizer: EcoSolve Reuse Solutions, Richard Barbone

IMPLEMENTATION: ecoapprentice

LIVING CULLY ECODISTRICT

PARTNERS

PROJECTS

Cully Park: built with volunteer labor

Tribal Gatherings

Rehabilitated Affordable Housing

IMPLEMENTATION: LIVING CULLY ECODISTRICT (PORTLAND, OR)

EcoDistricts | ABOUT | CITIES | INCUBATOR | SUMMIT | TOOLS | JOIN | SEARCH

LATEST NEWS

- Eyewire: EcoDistricts joins Sustainable Cities Roundtable March 10
- In The Capital: Call for Participation: EcoBusiness Advisory Committee

TRAININGS

- Watch the Incubator Film - 3 day
- Ask the Expert: Aden Beck

Ready to launch an ecodistrict in your city? Start here.

EcoDistricts INCUBATOR MAY 7-9 | PORTLAND, OR

ECODISTRICTS FRAMEWORK | ECODISTRICTS TRAININGS | ECODISTRICTS TARGET CITIES

6

EVALUATION CRITERIA

PROJECT	BARRIERS	ASSETS	HAS A CHAMPION	INVOLVES ALL ASPECTS OF COMMUNITY	HAS A TEAM	SOLVES A COMMUNITY PROBLEM	HAS POTENTIAL PARTNERS	IS DOABLE	BENEFITS MULTIPLE N'-HOODS	ELIMINATE CHEMICALS IN THE ENVIRONMENT	RESPECT NATURE'S DIVERSITY	USE ENERGY AND RESOURCES FAIRLY	REDUCE RESOURCE AND FUEL USE
Tool Library	Location Funding Manager	Participation Resources (tools)	Yes, multiple	Yes, reuses tools anyone can use	Yes	Yes, provides tools for anyone especially those that don't have any	Schools & Churches Neighborhood Associations	Yes	Yes	Yes	Do not	Yes	Overall, yes
COMMUNITY COOPERATIVE	Information Participation Siting Lack of Time	Variety of Skills Health & Goods Participated Educated Citizens	Potentially	Yes	Potentially those are people interested	Solves many	Neighborhood Associations ACC Other Schools Churches	Over time	Yes	Yes	Yes	Yes	Yes
Farmer Market Year-round	Weather Siting-Indoors? Participation Parking/Transportation	Food! Local Community Economy	Potentially	Yes, everyone has to eat	Potentially	Fresh food local, helps economy may support local	Food-Buddy Nurseries Street-cafes Farmers	Yes	Yes	Yes	Yes, probably	Yes	Yes, definitely
Bio-Fuel using Horse-Manure	Processing Distribution	Creating local fuel Compost is byproduct Available NW Natural	Potentially	Maybe	Potentially	Yes, recycling	Horse-Farms						
Solar Energy on WLTs and Parking Lots													
COMMUNITY Transportation Shuttle													
District Energy Center													

1

EVALUATION CRITERIA

PROJECT	BARRIERS	ASSETS	HAS A CHAMPION	INVOLVES ALL ASPECTS OF COMMUNITY	HAS A TEAM	SOLVES A COMMUNITY PROBLEM	HAS POTENTIAL PARTNERS	IS DOABLE	BENEFITS MULTIPLE N'-HOODS	ELIMINATE CHEMICALS IN THE ENVIRONMENT	RESPECT NATURES DIVERSITY	USE ENERGY AND RESOURCES RESPONSIBLY	REDUCE RESOURCE AND FUEL USE
Local Nurseries	Who pays for the plants? Buy in from all affected property owners Public programs for long-term maintenance?	Supports local businesses Educational opportunities Cultural resources such as the Willamette Administration Center Parks	Local Riverkeeper Willamette River Region SOLVE Paving programs Sustainable City Board	All stream corridors need to be protected. All areas of the city should be included.	Young people Middle class Diverse Some clubs Some etc	Stream degradation Drinking water Sustainable Sustainable Sustainable	Same as champions City Hall	Absolutely!	Streams cross multiple N'hoods So yes. Seek involvement from all N'hoods	Many plants Stainless steel Chemical water etc - home & outdoors diversity	Yes - stream beds Recreation at local distances of plant nurseries	Does the project use energy and resources responsibly?	Reduce resource and fuel use
Stream Restoration Project throughout City	Swamp cleanup and possibly be done and possibly create jobs Paving & landscaping They need to alternate	Connects to water business Creates community Brings money to the community	Neighborhood Associations SAB	Intifies every N'hood and household that wants to participate. Partnered for residents not businesses.	Not yet Requires an organizational discipline	Reduces water system Redundancy of Water pipes Stronger supports for water	Same as champion City Hall	Would be difficult to do outdoors Needs to be done at neighborhood or sub-neighborhood scale	All neighborhoods would be involved	Probably not	Probably Yes. Stream beds Recreation at local distances of plant nurseries	Does the project use energy and resources responsibly?	Reduce resource and fuel use
City wide Sewage	Overcoming culture of not cleaning our things Repair & maintenance Organizational & management system	Reduces redundancy of equipment & staff Employee's time - great Awards training to hardware store for such needs	Black Leaders or Neighborhood Leaders	Every residential household can be involved.	Not yet A lot of work Back/forward	Reduces water system Redundancy of Water pipes Stronger supports for water	Same as champion City Hall	At smaller scale and within close neighbor hoods	Yes it set up to encompass multiple neighbor hoods	Yes, it it reduces unnecessary work	Probably Yes. Stream beds Recreation at local distances of plant nurseries	Does the project use energy and resources responsibly?	Reduce resource and fuel use
Tool Exchange													

EVALUATION CRITERIA

2

PROJECT WEST LINN GARDEN TEAM	BARRIERS	ASSETS	HAS A CHAMPION	INVOLVES ALL ASPECTS OF COMMUNITY	HAS A TEAM	SOLVES A COMMUNITY PROBLEM	HAS POTENTIAL PARTNERS	IS DOABLE	BENEFITS MULTIPLE N'-HOODS	THE NATURAL STEP				
										ELIMINATE CHEMICALS FROM THE ENVIRONMENT	RESPECT NATURE'S DIVERSITY	USE ENERGY AND RESOURCES EFFICIENTLY	REDUCE RESOURCE AND Fossil FUEL USE	
<p>Community Garden</p> <p>1. Evolution of existing</p> <p>2. Creation</p> <p>3. Continues</p>	<p>Potential brown-field issues.</p> <p>High turnover of residents</p> <p>Zoning & ownership issues.</p> <p>Physical layout of hills & lanes.</p> <p>Accessibility to all community</p> <p>Lack of a sense of place affects ownership</p> <p>Lack of diversity in planning</p>	<p>Large private towns. hills layout of land for rain water collection.</p> <p>Many established gardens.</p> <p>GARDEN CENTERS as community anchors</p> <p>untapped economic resource model</p> <p>-bartering</p> <p>* location for community events</p>		<p>Yes: Economic, food, cohesion, students (next generations) education</p>	<p>W.P.</p>	<p>Sense of place & community</p> <p>Schools & businesses</p> <p>EPA initiatives</p> <p>Don't turn regions into a parking lot for all</p> <p>Resilience</p> <p>CREATES LOCAL Economy</p>	<p>Schools</p> <p>Businesses</p> <p>EPA initiatives</p> <p>Private thinking</p>	<p>Low capital investment</p> <p>Build upon existing elements</p>	<p>IF organic less transport</p> <p>SHARED KNOWLEDGE</p> <p>Resilience</p> <p>LEARN Bio-Regional</p> <p>SELF-GOVERNANCE - capacity</p> <p>REGISTRATION OF COMMUNITY</p>	<p>RESPECT NATURE'S DIVERSITY</p>	<p>USE ENERGY AND RESOURCES EFFICIENTLY</p>	<p>REDUCE RESOURCE AND Fossil FUEL USE</p>		
<p>Living Village</p>		<p>E-COMMUNITY</p> <p>TIME BANK</p> <p>LOCAL CURRENCY</p> <p>SHARED SOLUTIONS</p>												

EVALUATION CRITERIA

3

PROJECT	BARRIERS	ASSETS	HAS A CHAMPION	INVOLVES ALL ASPECTS OF COMMUNITY	HAS A TEAM	SOLVES A COMMUNITY PROBLEM	HAS POTENTIAL PARTNERS	IS DOABLE	BENEFITS MULTIPLE N-HOODS	THE NATURAL STEP
										ELIMINATE CHEMICALS IN THE ENVIRONMENT RESPECT NATURE'S DIVERSITY USE SUSTAINABLE RESOURCES FAIRLY REUSE RESOURCE AND FOSSIL FUEL USE?
Eco-Friendly Local Public Transportation System How get people use?	\$ How get people use? TAB! Trails w/ Transportation System	TAB! Trails w/ Transportation System Parents/Teachers/Clare! STEM Aligned Parent V.	Parents/Teachers/Clare! Clare! Parent V.	Yes	✓	No local option w/ Chamber Tri Met w/ grant	✓	✓	✓	✓
West Linn Schools Partnership Bureacracy	Finding a Location? buy or lease?	Real Estate Ag? Lisa! Tim 19th St Team Green Team Demo At Lolk Network Local Educators + class intervention teach	Real Estate Ag? Lisa! Tim	Yes	Future NHO Feedback TBA	Yes Yes YES	✓	✓	✓	✓
Ground Source Energy										

4

EVALUATION CRITERIA

PROJECT	BARRIERS	ASSETS	HAS A CHAMPION	INVOLVES ALL ASPECTS OF COMMUNITY	HAS A TEAM	SOLVES A COMMUNITY PROBLEM	HAS POTENTIAL PARTNERS	IS DOABLE	BENEFITS MULTIPLE N'-HOODS	THE NATURAL STEP		
										ELIMINATE CHEMICALS FROM ENVIRONMENT	RESPECT NATURE'S DIVERSITY	DOES THE PROJECT: USE ENERGY AND RESOURCE EFFICIENTLY? REDUCE FUEL USE?
Develop/Integrate Food Pantry	Awareness \$	Existing Pantry	Food Pantry	✓		Food Security	✓ Food Pantry	✓	✓	✓	✓	✓
Develop Police → Farmer Market		Access Available Land	FARMERS/ARTISTS	✓		Food Security Econ Development	✓ MILK? O.C. FARMERS MKT	✓	✓	✓	✓	✓
Fruit Tree Corp	Pest Maintenance	Existing Trees	HOMEOWNER	✓		Food Security	✓ SCHOOLS FRUIT TREE BOX FOOD PANTRY	✓	✓	✓	✓	✓
Vacant lots → Comm. Gardens	Awareness \$	Interest	HOMEOWNER			Food Security	✓ SCHOOLS City	✓	✓	✓	✓	✓
Ed Hydro Water Turbines	Availability Funding	Water system	CITY / WATER DEPT			Energy Econ. Dev.	✓ Energy Trust City	✓	✓	✓	✓	✓
Backyard Pantry	Joining Neighbors	Interest	FARMER SUPPLY			Food Security	✓ Retail City FOOD PANTRY	✓	✓	✓	✓	✓
Green Tass / Offset for City	\$	Comm. Groups	ENERGY TRUST Pon. ENVIR. PGE			Energy	✓ Enviro. Groups City PGE	✓	✓	✓	✓	✓
Promote Edible Landscape	HDA Awareness	Interest	NURSERY			Food Security	✓ Retail FOOD PANTRY SCHOOLS	✓	✓	✓	✓	✓
Invasive Species Removal	Habitat Propagating Ship	Comm. Groups	PARKS + REC			Diversity	✓ City, Off Landowners	✓	✓	✓	✓	✓

EVALUATION CRITERIA

5

PROJECT	BARRIERS	ASSETS	HAS A CHAMPION	INVOLVES ALL ASPECTS OF COMMUNITY	HAS A TEAM	SOLVES A COMMUNITY PROBLEM	HAS POTENTIAL PARTNERS	IS DOABLE	BENEFITS MULTIPLE N'-HOODS	ELIMINATE CHALLENGES TO THE ENVIRONMENT	DOES THE PROJECT: RESPECT DIVERSITY USE ENERGY RESOURCES FAIRLY	REDUCE AIR AND FOSSE FUEL USE?
FRUIT TREE PROJECT	• LACK OF KNOWLEDGE • PEOPLE/LOCAL COMPANIES NOT INTERESTED	• LOCAL FOOD PARTNER • FRUIT TREES • FOOD BANK		YES, ALL AGES SCHOOLS, HOMEBOODS BUSINESS		• BOTTLED FRUIT • HEALTHY • HEART TO FOOD BANK	• Food Bank • SCOUTS - STAFF • M-H • SCHOOLS • GRAVE OF THE LOCAL FARMERS	YES YES	YES ALL	YES YES	YES YES	YES
FOOD CO-OP		• Local/organic				• Buy local/organic • grows money	Local Farmers	YES BUT HARD		YES	YES	YES
DIRTY/DIRTY FOOD GARDEN CLUBS	• PEOPLE/LOCAL COMPANIES NOT INTERESTED • LACK OF KNOWLEDGE	• MIXED ENTREPRENEUR PROGRAM • POSITIVE LOCAL BUSINESS • GIBBS CLUB		YES - SCHOOLS, HOMEBOODS BUSINESS, FOOD ZONES, PARTNERS		• YES - STREETS • WALKING STREETS • FOOD BANK • FOOD ON PUBLIC MARKET • PARTNERS MARKET STREETS	SCHOOLS FOOD BANK FARMERS MARKET LOCAL BUS GIBBS CLUB	YES	YES ALL	YES	YES	YES
LOCAL CURSIC	• Buy-in (education) • NEED A FINANCIAL CONTRIBUTION	• FEELS MONEY IN COMMUNITY • IMPROVE LOCAL BUSINESS		YES - POTBANK		• YES - MONEY MONEY CO-OP OF COMMUNITY HEYS LOCAL EC.	Local - Finance Food Bank Local Bus Local Farmer Local Chamber	YES - PUT HARD	YES	?	—	
HEALTHY RETIRED (MID-30S)	• FINANCIAL • Buy-in from local farmers • NEED FINANCIAL CONTRIBUTION	• EXISTING BUS • SHOP LOCAL • IMPROVE LOCAL BUSINESS (HEYS)		• SCHOOLS • ALL WORKING • COOPERATION		• YES - SOME HOMEOWNERS - KIDS	IT COULD - STORES, ACC, ACC	YES - SURELY WITH A JOB	YES	YES	YES	YES
DEBRAND LOCAL GARDEN COMMUNITY	• NEED OTHERS • Buy-in • TIME	• YES ABOUT QUALITY • REPUTATION • MARKET OF CITY		YES		• YES - JIMMY	STAFF TRUCK	YES - TRUCK TIME	YES	—	—	—