

Online Questionnaire Summary

INTRODUCTION

The City of West Linn is updating its 2007 Parks, Recreation and Open Space Plan (the Plan). This update will guide ongoing and future decisions regarding the management, maintenance, improvements and future investments in City parks, open space, recreation facilities, trails, programs and events. To create a plan that is relevant, implementable and inspiring to City residents, the project team distributed a questionnaire early in the project to identify community priorities and needs. The questionnaire was available in paper format and online from March 22 to April 30, 2017.

A total of 1,898 respondents responded to the questionnaire, with 1,330 respondents completing every question. This response rate (nearly 7.5% of the City population¹) is high considering the typical response rate for a community of West Linn's population size.

These responses reflect the opinions for residents who elected to participate in this survey. Responses are not considered representative of City residents nor voters overall. For all questions, the percentages are calculated based on the total number of respondents who viewed the question—whether or not an answer was selected. For questions where only one response was allowed, the number of people who did not respond to the question is noted.

This memo summarizes key findings and questionnaire results. It addresses preferences for parks and facilities, participation in programs and events, desired improvements for the park and recreation system, as well as the demographic characteristics of respondents. In addition, 105 pages of comments were received in response to open-ended questions. Write-in responses are summarized in this document and available in their entirety under a separate cover.

¹ The overall population of West Linn is 25,615 in 2016 as per U.S. Census data.

Parks and Recreation Facility Preferences

The following key findings emerged from the analysis of the questionnaire results for parks and facility preferences (Tables 1 to 7 and Figures 1 to 3).

- **Benefits of the parks and recreation system:** Providing opportunities to be outdoors or in nature and creating positive activities for youth were identified as the top two benefits of the City's parks and recreation system.
- **Quality of parks and facilities:** More than 80% of respondents rated the quality of parks and outdoor facilities, natural areas and trails as good or excellent. In contrast, less than 30% of respondents felt that the quality of indoor recreation facilities was good or excellent.
- **Park visitation:** More than half of respondents visit their favorite park in West Linn at least once a week or more. Most respondents visit larger parks with a variety of outdoor facilities and schools/parks with sports facilities most frequently (at least once a month).
- **Barriers to visitation:** For respondents who reported that they seldom use or do not use parks in West Linn, the primary reasons were that they did not have time or did not know what was available. Write-in respondents also noted concerns about dogs – both that the city lacks adequate off-leash spaces and that off-leash dogs are a safety issue.
- **Favorite park:** Respondents' favorite parks tended to be the larger, multi-use or active oriented parks, such as Mary S. Young Park, Willamette Park, Tanner Creek Park and Fields Bridge Park.
- **Desired park characteristics:** Residents attributed convenient location, presence of natural character or shade, the park condition/quality, riverfront or water access, trails and dog-friendly spaces as reasons for making a park or open space their favorite.
- **Park and facility improvements:** When asked what could be done better, many write-in responses noted the desire for indoor recreation/community space, aquatic facilities, recreation programs and trails/sidewalks.

Table 1: What benefits of the West Linn parks and recreation system are most important to you? (Select two)

Answer	Count	Percentage
Provide opportunities to be outdoors / in nature	981	62.1%
Create positive activities for youth	656	41.5%
Support health and fitness	403	25.5%
Create places for neighborhood and family gatherings	326	20.6%
Bring the entire community together at large events	180	11.4%
Increase property values and strengthen the economy	170	10.8%
Continue life-long learning and recreation	158	10.0%
Support a unique identity for West Linn	95	6.0%
Provide opportunities for teamwork and competition	88	5.6%

Figure 1: Rate the quality of the following provided by the City of West Linn Parks and Recreation Department.

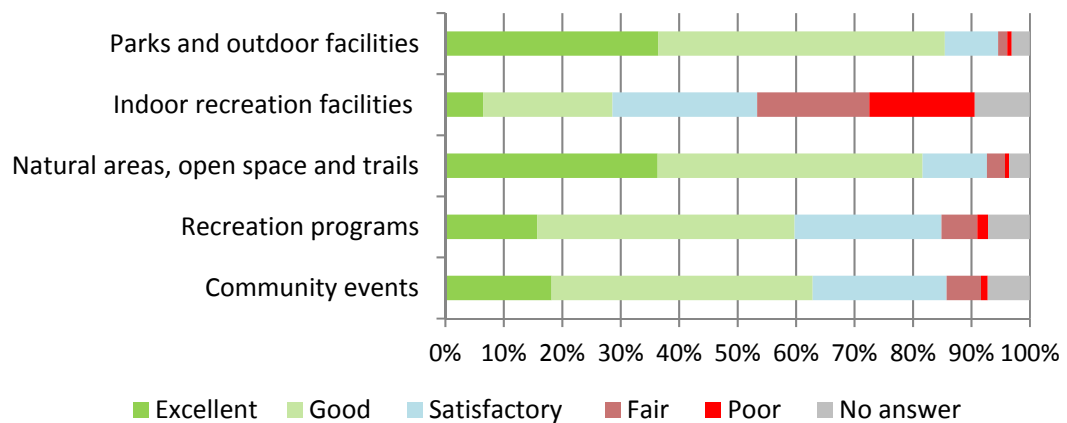


Table 2: [If satisfactory, fair or poor as noted in question above] What could we do better?

Parks, Recreation and Open Space Plan Update

Note: Responses to this open-ended question are categorized by the types of comments noted. Some individual comments included multiple suggestions for improvements.

Answer	Count
Provide indoor/all-season indoor center	220
Provide swimming pool / aquatic facilities	188
Improved maintenance/cleanliness	108
Improve, enhance and/or develop trails and sidewalks	98
Improve, enhance and/or develop recreation programs	92
Improve, enhance and/or develop sports fields/ courts	53
Improve, enhance and/or develop natural areas/ open space	52
Improve parks and recreation department and communication with residents	47
Provide more spaces for dog and/or enforce leash laws	32
Provide community events	31
Provide amenities (benches, lighting, parking, covered spaces, etc.)	28
Improve safety of parks and trails	25
Orient land uses away from housing and toward parks and economic development	18
Improve access to parks and trails	12
Improve West Linn's offerings to meet or exceed neighboring communities	9

Figure 2: How frequently do you visit these parks and recreation facilities?

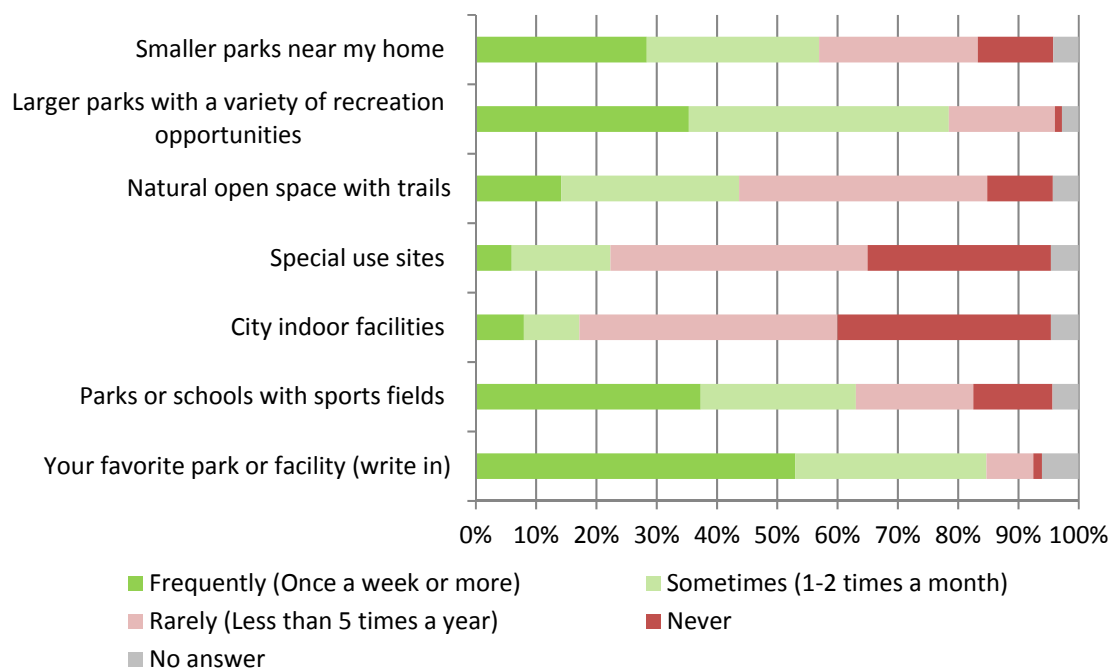


Figure 3: Favorite Park or Facility (write-in your response)

Note: The word cloud below emphasizes the parks and facilities mentioned by respondents most frequently as their favorite, by noting them in larger type. Parks and facilities mentioned less frequently are noted in smaller type.

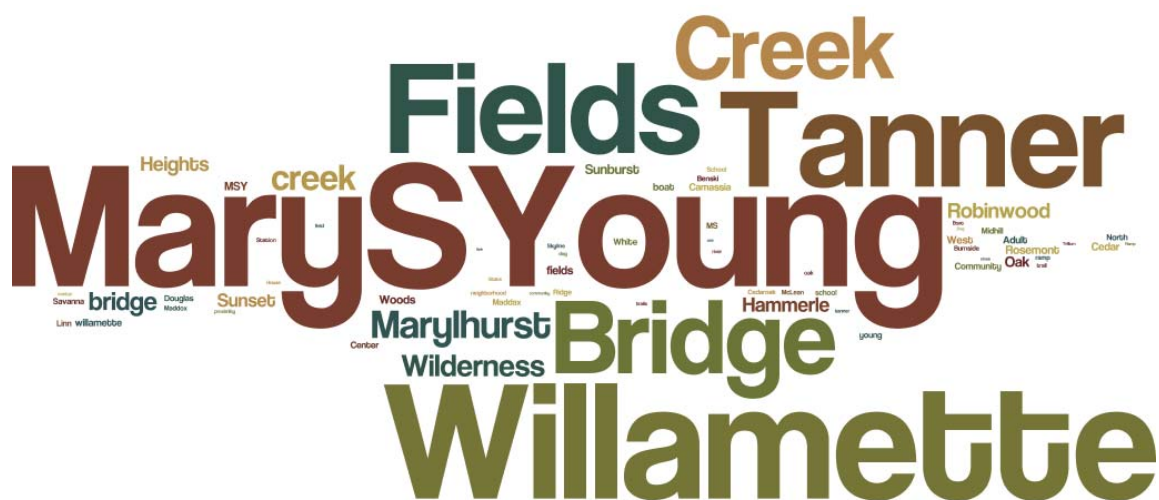


Table 3: Favorite park or facility? (write-in your response)

Note: The table below shows the numbers of people who noted these sites as their favorite parks. Some individual comments included multiple sites.

Answer	Count
Mary S. Young Park	367
Willamette Park	197
Tanner Creek Park	169
Fields Bridge Park	168
Marylhurst Heights Park	54
Wilderness Park	38
Hammerle Park	37
Robinwood Park	26
Maddax Woods	23
Cedaroak Boat Ramp	22
Adult Community Center	22
Sunset Park	20
Sunburst Park	19
Camassia Nature Preserve	18
The White Oak Savannah	18
Midhill Park	13
North Willamette Park	13
Burnside Park	12
Douglas Park	11
Benski Park	11
McClean House and Park	8
Sahallie Illahee Park	8
Skyline Ridge Park	7
Bernert Landing	4
Sunset Fire Hall	4

Table 3 (continued)

Answer	Count
Palomino Park	3
West Bridge Park	3
Cedar Island	1
Swiftshore Park	1
West Linn Skate Park	1
Ibach Nature Park	0
Mark Lane Tot Lot	0
Tualatin River	0
School sites	41
Miscellaneous (non-City or non-specific sites)	74

Table 4: If you seldom use or do not use the parks in West Linn, what are your reasons?
(Please check your top two choices)

Answer	Count	Percentage based on number of respondents
No time	262	17.7%
Don't know what's available	108	7.3%
Lack of facilities	80	5.4%
Don't know where they are located	69	4.7%
Too far away/not conveniently located	68	4.6%
Inadequate parking	63	4.3%
Poorly maintained / poor condition	41	2.8%
Don't like what West Linn parks offer	27	1.8%
Too crowded	27	1.8%
Feel unsafe	24	1.6%
Do not have transportation	7	0.5%
Other (See other comments in Table 5)	135	9.1%

Table 5: If you seldom use or do not use the parks in West Linn, what are your reasons?

Note: Responses to this write-in option are categorized by the types of comments noted.

Answer	Count
Don't have what I want/no reason to visit	27
Not enough spaces for dogs/too many dogs off-leash	25
Poor weather	23
Nothing for my kids	11
Too busy	10
Concerns about safety	9
Poor maintenance	5
Too difficult for older adults	4
Other*	20

*"Other" comments include a variety of unique individual responses or responses that did not address the question.

Table 6: Thinking about your favorite park or open space in West Linn, what do you like about it? (check all that apply)

Answer	Count	Percentage based on number of respondents
Convenient location	943	63.9%
Natural character/shade	749	50.7%
Condition of site and its facilities	694	47.0%
Water access/riverfront views	651	44.1%
Not too crowded	550	37.2%
Trail connections to other locations	463	31.4%
Variety of recreation facilities/opportunities	341	23.1%
Interesting play structures	335	22.7%
Availability of sprayparks/waterplay	280	19.0%
Programs/activities offered	214	14.5%
Accessible for those with mobility challenges	110	7.5%

Other (see other comments in Table 7)	101	6.8%
---------------------------------------	-----	------

Table 7: Thinking about your favorite park or open space in West Linn, what do you like about it? [Other]

Note: Responses to this open-ended question are categorized by the types of comments noted.

Answer	Count
Dogs	24
Activities/events/recreation features	23
Natural areas/beauty/features	18
Trails	16
Access/near to my home	8
Other*	17

*"Other" comments include a variety of unique individual responses or responses that did not address the question.

Participation in Events, Classes and Programs

The following key findings emerged from the analysis of the questionnaire results for participation in various activities and programs such as events and classes (Tables 8 to 11 and Figure 4).

- **Popular events, classes or programs:** More than 54% of respondents or their family members participated in community events and festivals last year, while 53% hiked or biked on trails, nearly 44% participated in sports leagues, camps, classes or activities and around 43% attended music concerts and other cultural events. The majority of these popular activities were provided by the City of West Linn (70%) or to a lesser extent (25%) by non-profit interest groups such as Girl Scouts, sports leagues, etc.
- **Factors that would increase participation rates:** Having more weekend programs, a greater variety of program or event choices, having more family-friendly events, classes or programs and having flexible scheduling or drop-in opportunities were cited as the top four factors that would increase participation in recreation events, classes and programs among survey respondents. Write-in respondents also noted factors such as activities for specific age groups and better communication from the City regarding upcoming opportunities.
- **Quality of programs, classes and events:** Respondents rated the recreation programs, classes and events for young adults and teens poorly. Overall, programs, classes and events for children (age 6-12) and older adults or seniors were rated better than programs and classes offered for other population groups.

Table 8: Within the past year, did you or a family member participate in any of the recreation events, classes and programs listed below, offered by the City of West Linn or another provider? (Select all that apply)

Answer	Count	Percentage based on number of respondents
Community events and festivals	765	54.1%
Hiking or biking on trails	742	52.5%
Sports leagues, camps, classes, activities	623	44.1%
Music, concerts and cultural events (attending)	601	42.5%
River programs or activities (boating, fishing, paddleboarding, kayaking, etc.)	313	22.2%
Summer day camps and programs	288	20.4%
Nature programs or activities (gardening, wildlife watching, environmental education / interpretation, nature play, etc.)	193	13.7%
Fitness classes (yoga, Zumba, spin, weight lifting, etc.)	163	11.5%
Dance, theater or other performing arts (performing in)	141	10.0%
Before or after school programs	109	7.7%
Arts and crafts	97	6.9%
Programs for older adults and seniors	75	5.3%
Other*	56	4.0%

*"Other" comments include a variety of individual responses such as meditation, cooking classes, events at the library and volunteering.

Table 9: Who provided these recreation events, classes and programs? (Select all that apply)

Answer	Count	Percentage based on number of respondents
City of West Linn	986	69.8%
Non-profit interest group (e.g., sports leagues, performing arts groups, Girl Scouts, Boy Scouts)	356	25.2%
Private club or fitness center (e.g., Club Sport, Stafford Hills Club)	159	11.3%
Neighboring city	143	10.1%
Community schools or college	135	9.6%
Private business (e.g., Sachi Wellness Center, Harmony Road Music Center, Happy Trails Riding Center)	111	7.9%
Gladstone YMCA	10	0.7%
Don't know/unsure	200	14.2%

Table 10: What factors would increase your interest and availability to participate in recreation events, classes and programs? (Select all that apply)

Answer	Count	Percentage based on number of respondents
Greater variety of program/event choices	440	31.1%
Family-friendly events, classes and programs	389	27.5%
Weekend programming	356	25.2%
Flexible scheduling or drop-in opportunities	325	23.0%
Earlier or later operating hours to fit my schedule	266	18.8%
Programs closer to where I live (such as a nearby school or park)	221	15.6%
Drop-in childcare available during events, classes and programs	143	10.1%
Short classes or one-time activities that fit in the lunch hour or other short time periods	138	9.8%
Scholarships or reduced fees	106	7.5%
ADA accessible activities and facilities	17	1.2%
Transportation assistance	14	1.0%
Other (see other comments in Table 11)	99	7.0%

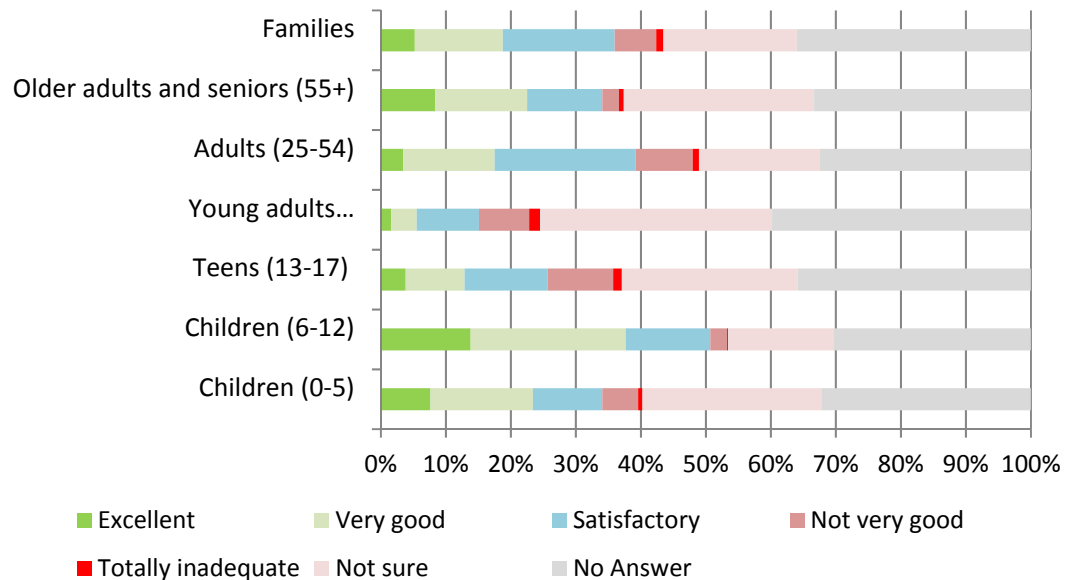
Table 11: What factors would increase your interest and availability to participate in recreation events, classes and programs? [Other]

Note: Responses to this write-in option are categorized by the types of comments noted.

Answer	Count
Types of activities offered	22
Timing/schedule of events, classes and programs	14
Development of other facilities	13
Activities for different age groups	13
Communication from city about offerings	13
Development of swimming pool	10
Cost/affordability	7
Development of indoor recreation center	6
Other*	13

*"Other" comments include a variety of unique individual responses or responses that did not address the question.

Figure 4: Rate the recreation the events, classes and programs provided by the City of West Linn for different population groups.



Desired Improvements

Funding for improvements, operations and maintenance for existing and new parks and facilities is limited. The following key findings around funding improvements to existing and future parks and recreation facilities emerged from the analysis of the questionnaire results (Tables 12 to 18, Figures 5 to 7).

- **More of these recreation activities:** The most respondents were interested in more walking and biking, more swimming or water play (indoor and outdoor) and increased river access for activities in West Linn's parks and recreation system.
- **More of these recreation programs:** Aquatic programs or swimming, outdoor recreation and fitness and wellness programs were the top three types of recreation programs that respondents felt are most needed in West Linn.
- **Option to improve access and connectivity along the river:** To improve access and connectivity along the Willamette River (south of I-205) between Willamette Park and West Bridge Park, more than 69% of respondents would like to have an off-street multi-use path along the river, and 43% would like to see the City improve Willamette Falls Drive to include a separated bike/pedestrian route.
- **Highest priorities for development or improvement:** According to respondents, the top three priorities for facility development or improvement (if funding were available) are an aquatic facility/indoor swimming pool (47%), a multi-purpose indoor community center (29%) and nature trails (21%). None of the facilities noted were desired by a majority of respondents, suggesting a desire to provide a variety of facilities in West Linn.
- **Tax measure:** If the City opted to pursue a future tax measure, more than 60% of respondents indicated they may support a measure for a new aquatic facility (47% said they would "definitely" support and 15% said they would "probably" support), a riverfront park (33% said they would "definitely" support and 29% said they would "probably" support) and for the renovation of existing parks and recreation facilities (25% said they would "definitely" support and 37% said they would "probably" support). While these options received support, around 40% of the respondents indicated they may not support these improvements (approximately 10% would definitely oppose, 8% would probably oppose and 22% were not sure or did not answer).

Table 12: What activities would you most like to see more of in West Linn's parks, recreation and open space system? (Select your top two)

Answer	Count	Percentage based on number of respondents
Swimming or water play (indoor or outdoor)	525	39.7%
Walking/biking	410	31.0%
River access for activities (such as fishing, kayaking, scuba, paddleboarding, boating, etc.)	241	18.2%
Artistic or cultural expression (music, theatre, visual arts, public art, etc.)	207	15.7%
Nature observation and interpretation	176	13.3%
Fitness and wellness	171	12.9%
Social gathering (community events, picnics, parties, etc.)	161	12.2%
Adventure activities/programs (zipline, canopy tours, rafting)	143	10.8%
Playing (running, sliding, climbing, etc.)	131	9.9%
Organized team or individual sports	122	9.2%
Casual sports or games	88	6.7%
Skateboarding	9	0.7%
Other (see other comments in Table 13)	78	5.9%

Table 13: What activities would you most like to see more of in West Linn's parks, recreation and open space system? [Other]

Note: Responses to this write-in option are categorized by the types of comments noted.

Answer	Count
Responses aligned with the categories provided in the multiple-choice portion of the question	40
Off-leash areas for dogs/enforcement of leash laws	14
Indoor recreation center	7
Amenities (lighting, parking, seating, etc.)	3
Other*	10

*"Other" comments include a variety of unique individual responses and responses that did not address the question.

Table 14: What types of recreation programs are most needed or should be enhanced in West Linn? (Select your top two)

Answer	Count	Percentage based on number of respondents
Aquatic programs / swimming	534	40.4%
Outdoor recreation	270	20.4%
Fitness and wellness programs	236	17.8%
Youth sports	230	17.4%
Arts and culture programs	173	13.1%
Environmental programs	169	12.8%
Adult sports	147	11.1%
Before and after school programs, camps	106	8.0%
Special events	102	7.7%
Service / volunteer programs	99	7.5%
Education/special interest classes	97	7.3%
Senior programs and trips	63	4.8%
Volunteer programs	42	3.2%
Other*	47	3.6%

*"Other" comments include a variety of individual responses such as trails, particularly for mountain bikes, and dog parks.

Table 16: What option best describes how you'd like to improve access and connectivity along the Willamette River (south of I-205) between Willamette Park and West Bridge Park? (Select your top two choices)

Answer	Count	Percentage based on # of respondents
Pursue an off-street multi-use path along the river	916	69.2%
Improve Willamette Falls Drive to include a separated bike/pedestrian route	574	43.4%
Add viewpoints between the parks overlooking the river	240	18.1%
Consider additional water access between parks	215	16.3%
Safety improvements and wayfinding signage along existing streets north of I-205	85	6.4%
Nothing, keep as is (poor walking/biking connectivity)	39	3.0%
Other*	30	2.3%

*"Other" comments include a variety of individual responses, such as the need for parking and lack of familiarity with West Bridge Park.

Table 17: If funding were available, which of the following facilities are the highest priorities for development or improvements in West Linn? (Please select your top two choices)

Answer	Count	Percentage based on # of respondents
Aquatic facility/swimming pool (indoor)	607	46.9%
Multi-purpose indoor community/recreation center	379	29.3%
Nature trails	272	21.0%
Multi-purpose trails	251	19.4%
Swimming area or pool (outdoor)	247	19.1%
Sports fields (baseball, softball, soccer, rugby, etc.)	183	14.1%
Off-leash dog area	133	10.3%
Unique play areas (thematic play, water play, nature play)	88	6.8%
Community gardens	76	5.9%
Outdoor sports courts	59	4.6%
Picnic areas/shelters	51	3.9%
Other*	65	5.0%

*"Other" comments include a variety of individual responses that reinforce the categories provided.

Figure 6: How should the City direct its resources if pursuing a future tax measure?

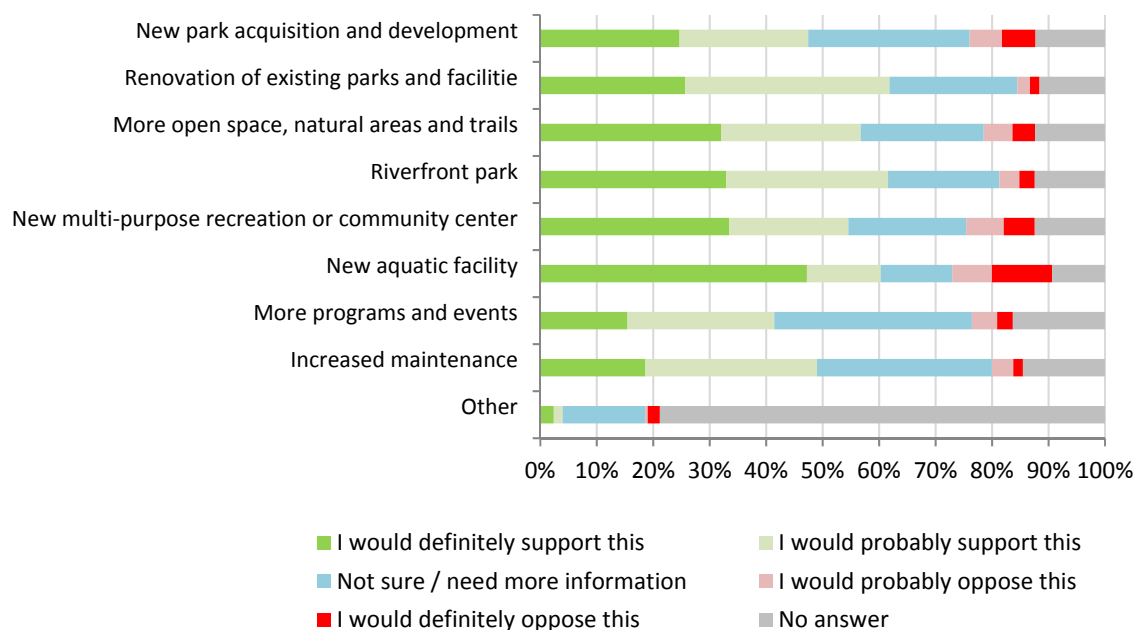


Figure 7: Do you have any final thoughts you would like to share about parks and recreation in West Linn?

Note: Words with larger type appeared in responses most frequently, while words with smaller type were noted less frequently.



Table 18: Do you have any final thoughts you would like to share about parks and recreation in West Linn?

Note: Responses to this open-ended question are categorized by the types of comments noted.

Answer	Count
Desire for more activities/facilities/recreation sites of all types*	155
Enthusiasm about West Linn, the parks system and the survey	136
Desire for an aquatic facility	77
Improved maintenance needed	73
Desire for more trails and/or greater connectivity	65
Desire for indoor recreation and/or community facilities	46
Support for natural areas/features/activities	46
Concerns about sources and uses of funding	34
Desire for amenities (lighting, parking, seating, etc.)	33
Desire for off-leash areas for dogs/enforcement of leash laws	22
Desire for less or better-planned development	16
Support for partnerships for provision of recreation	8
No comment	6
Desire for city to offer and/or manage fewer activities/facilities/sites	5
Other**	25

*Specific types of facilities or sites are noted in other rows of the table.

**"Other" comments include a variety of individual responses that were not addressed by others or did not address the question.

DEMOGRAPHIC PROFILE OF RESPONDENTS

The majority of respondents to the online questionnaire (89%) are residents of West Linn (Map 1). While more than 28% of respondents have lived in the City for more than 16 years, 36% have lived in West Linn for five years or less.

Overall, the demographic profile of the survey respondents represents the community profile of West Linn. Most respondents are between 35 to 55 years in age (57%) and have children under 18 living in their household (60%). Approximately 14% of the respondents indicated they were 65 years or older, which corresponds with the percentage of West Linn senior residents as per 2010 U.S. Census. Children between the age of 10 to 19 were under-represented in the survey (3% of respondents were between the age of 10 to 19 compared to 15% of West Linn residents), while respondents between the age 35 to 64 were over-represented (72% compared to 48% of West Linn residents as per 2010 U.S. Census data).

Around 87% of the respondents identified themselves as Caucasian or White, which corresponds to the overall percentage of White residents in West Linn. (As per 2010 U.S. Census data, 91% of West Linn residents identify as exclusively White). Nearly 2.5% and 3% of questionnaire respondents identified themselves as Hispanic or Latino and Asian or Asian American. Both these populations correspond to the overall percentage of Hispanic or Latino and Asian population in the City. (In comparison, 2010 U.S. Census data indicates that 4% of West Linn residents identify as exclusively Hispanic or Latino and exclusively Asian).

Table 19: Do you live, work or go to school in West Linn? (Select all that apply)

Answer	Count	Percentage based on number of respondents
I live in West Linn	1,516	89.1%
I work or own a business in West Linn	300	17.6%
I go to school in West Linn	127	7.5%
Just visiting	5	0.3%
I live in a nearby community	92	5.4%

Map 1: Locations that respondents marked where they live.

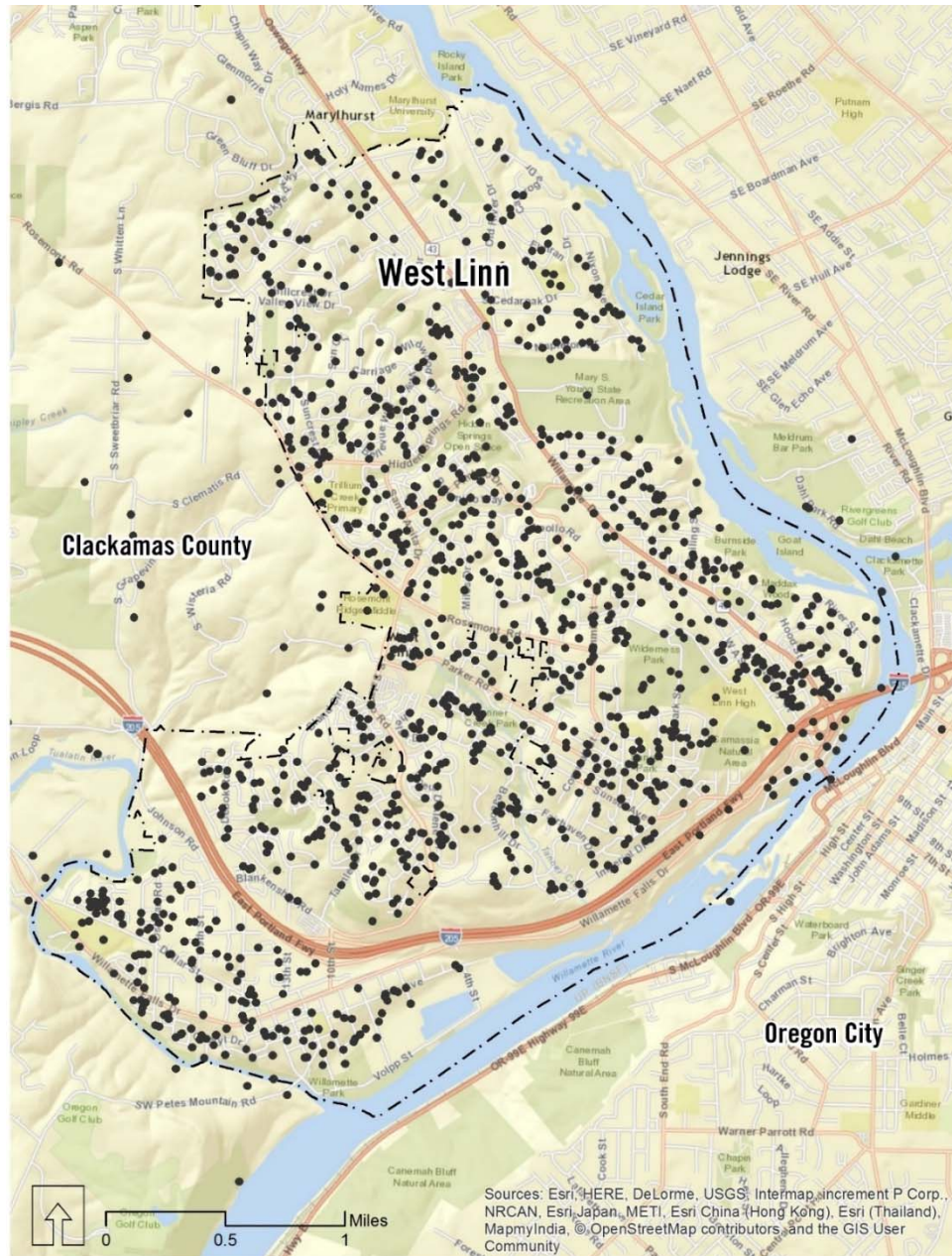


Table 20: What is your age?

Answer	Count	Percentage
10-14	16	0.9%
15-17	31	1.8%
18-24	33	1.9%
25-34	107	6.3%
35-44	532	31.3%
45-54	433	25.4%
55-64	267	15.7%
65-74	182	10.7%
75+	53	3.1%
No Answer	48	2.8%
Total Respondents	1,702	100%

Table 21: Do you have any children under the age of 18 living with you?

Answer	Count	Percentage
Yes	1023	60.1%
No	618	36.3%
No Answer	61	3.6%
Total Respondents	1,702	100%

Table 22: Please indicate your gender.

Answer	Count	Percentage
Female	1082	63.6%
Male	540	31.7%
Transgender	2	0.1%
Prefer not to answer	24	1.4%
Other	5	0.3%
Total Respondents	1,653	100%

Table 23: If you live in West Linn, about how long have you lived here?

Answer	Count	Percentage
Less than one year	82	5.4%
1-2 years	152	10.0%
3-5 years	312	20.6%
6-10 years	248	16.4%
10-15 years	284	18.7%
16+ years	433	28.6%
No Answer	5	0.3%
Total Respondents	1,516	100%

Table 24: Most people think of themselves as belonging to a particular ethnic or racial group. How do you identify yourself? (choose all that apply)

Answer	Count	Percentage based on number of respondents
African American/Black	8	0.5%
Asian or Asian American	49	2.9%
Caucasian/White	1,477	86.8%
Hispanic/Latino	43	2.5%
Multi-racial	31	1.8%
Native American	16	0.9%
Other	45	2.6%