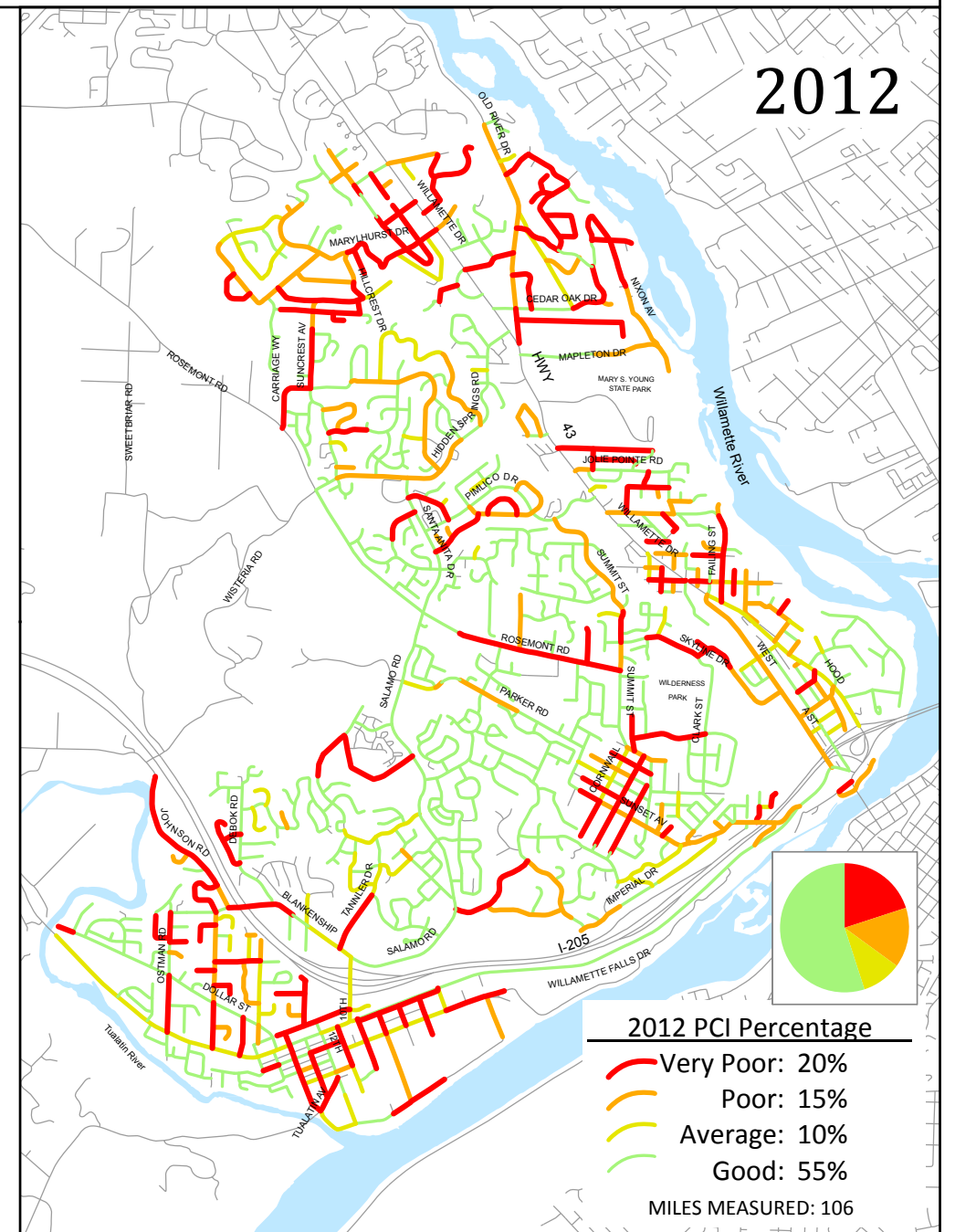
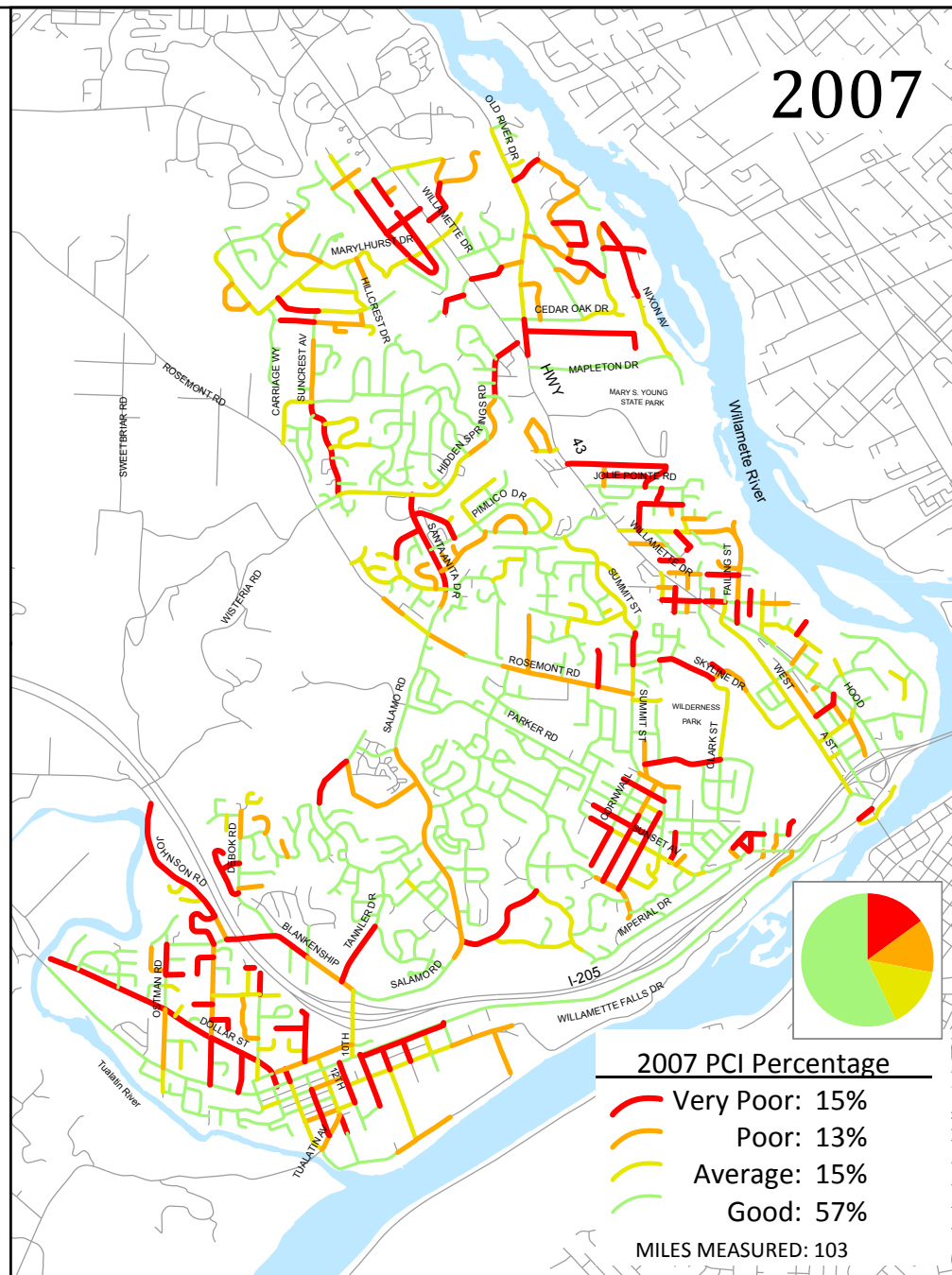
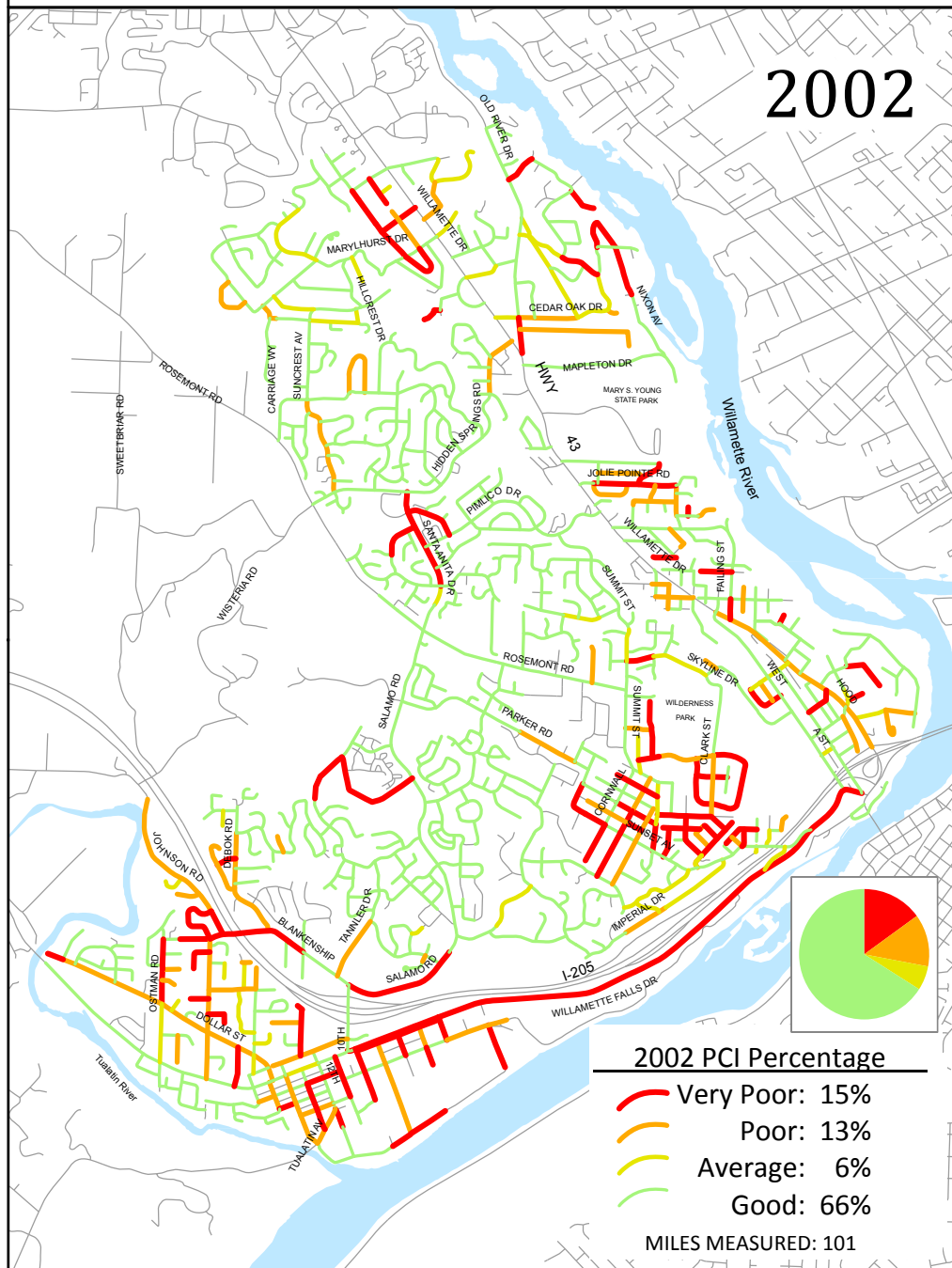




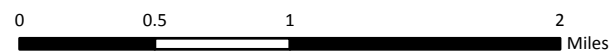
Pavement Condition Ratings 2002-2012



MAP PRODUCED: MARCH 2013

Map Developed by West Linn Public Works GIS
 Software Used: esri ArcGIS Desktop v10
 PCI Data Source: Capitol Asset & Pavement Services, Inc, StreetSaver Software
 2012 Inventory was created from Capital Asset Inventory 2009/2011 inventory, then updated with Slurry Seal and other street improvements since that time by the City of West Linn Public Works staff.

This product is for informational purposes and may not have been prepared for, or be suitable for legal, engineering, or surveying purposes. Users of this information should review or consult the primary data and information sources to ascertain the usability of the information.



Map Created: 3/26/2013
 GIS Data Coordinate System: NAD 1983 HARN StatePlane Oregon North FIPS 3601 Feet Intl
 LOC: G:\PROJECTS\GIS\STREETS_PMS\
 PCI_HISTORY_2013.MXD | KAH



Pavement Condition Index (PCI)

- Very Poor 0 - 40
- Poor 41 - 60
- Average 61 - 70
- Good 71 - 100

2002-2012 Overview Chart

