

Pathway Planning Mapbook

JULY 2014

Legend

On-Street Routes from TMP*

- Primary Route (30)
- Secondary Route (58)
- Local Route (3)
- Complete
- Beginning/Ending Points on Routes

Off-Street and All other Routes*

- Primary Route
- Secondary Route
- Local Route

Path and Trail Information

- Trail Inventory West Linn GIS 2014
- Trail Connections for On Street and Off Street

Tri-Met

- Bus Stops (Metro RLIS)
- Bus Stops, 1/4 Mile Buffer, Dashed Line

Schools**

WLWV School, Walking Boundaries

- Primary Schools
- Middle School
- High School

Commercial Areas

- Commercial Areas, 1/4 Mile Buffer (Zoning)
- Overlap Areas, Commercial Area & Primary School
- Overlap Areas, Commercial Area & Middle School
- Overlap Areas, Commercial Area & High School

Other School Layers

- Primary Safe Routes to Schools
- School Crossings along Safe Routes
- School Buffers, 1/4 & 1 Mile

Base Map Legend

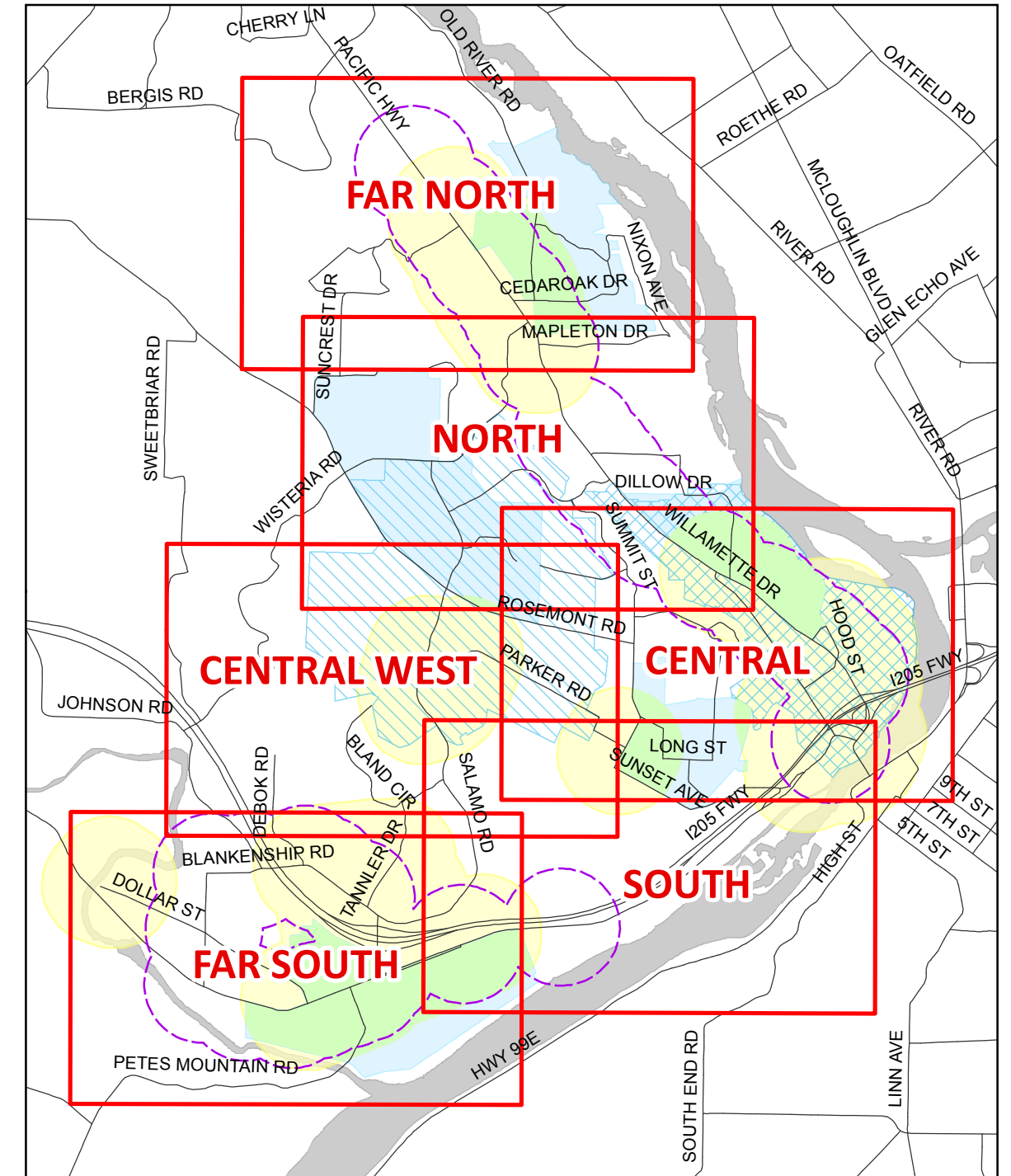
- Tax Lot Parcel Lines
- Streets
- Addresses
- Private Roads
- Unimproved Right-of-Way
- Streams
- Rivers
- Ponds
- West Linn City Limits
- City Owned Property

Tier Level:

1	#
2	#
3	#

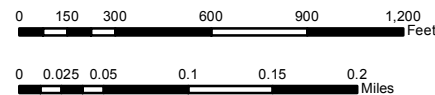
TMP Reference ID, GIS Route Number, See Spreadsheet (Assigned by West Linn GIS & Engineering Staff) Color Coded by Tier Labeled with Route Number

NOTE: You can identify unimproved trail routes by looking at green lines that do not have a black dashed line over the top. Improved trails display in the current GIS inventory.



Key Map

- Map 1 FAR NORTH
- Map 2 NORTH
- Map 3 CENTRAL
- Map 4 CENTRAL WEST
- Map 5 SOUTH
- Map 6 FAR SOUTH



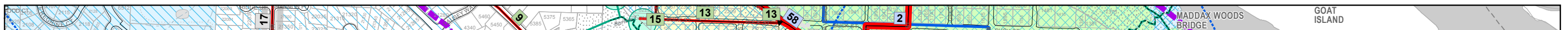
*West Linn 2013 Trails Master Plan (TMP) data provided by MIG.
 **Boundaries and Routes from West Linn Wilsonville School District
 (Digitized and spatially adjusted from Google Map overlays & PDF maps)
 All other map overlays provided by West Linn GIS / Public Works

MAP PUBLICATION: JULY 11, 2014 BASE MAP COURTESY OF THE CITY OF WEST LINN GIS CARTOGRAPHER: K. AHA
 GIS DATA COORDINATE SYSTEM: NAD 1983 HARN STATEPLANE OREGON NORTH FIPS 3601 FEET INTL

LOC: G:\PROJECTS\GIS\TRANS_TSP\PATHWAY_PLANNING_OVERVIEW_201407_QUADMAPS_COVERSHEET.MXD
 KAHA | MCOFFIE | Version 1: 5/19/2014, Version 2: 7/11/2014 (Add Tiers and route 73 merged into 71)

This product is for informational purposes and may not have been prepared for, or be suitable for legal, engineering, or surveying purposes. Users of this information should review or consult the primary data and information sources to ascertain the usability of the information.

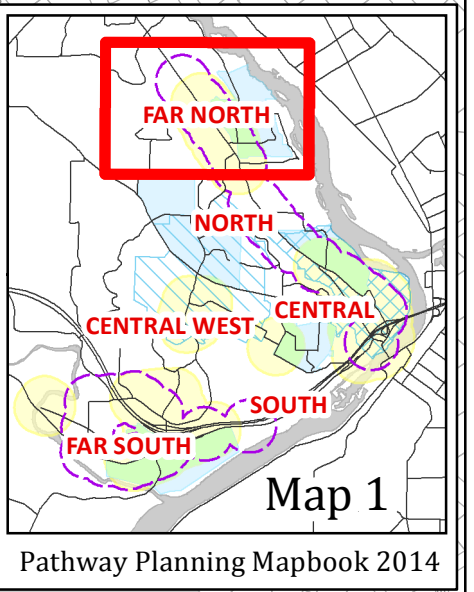
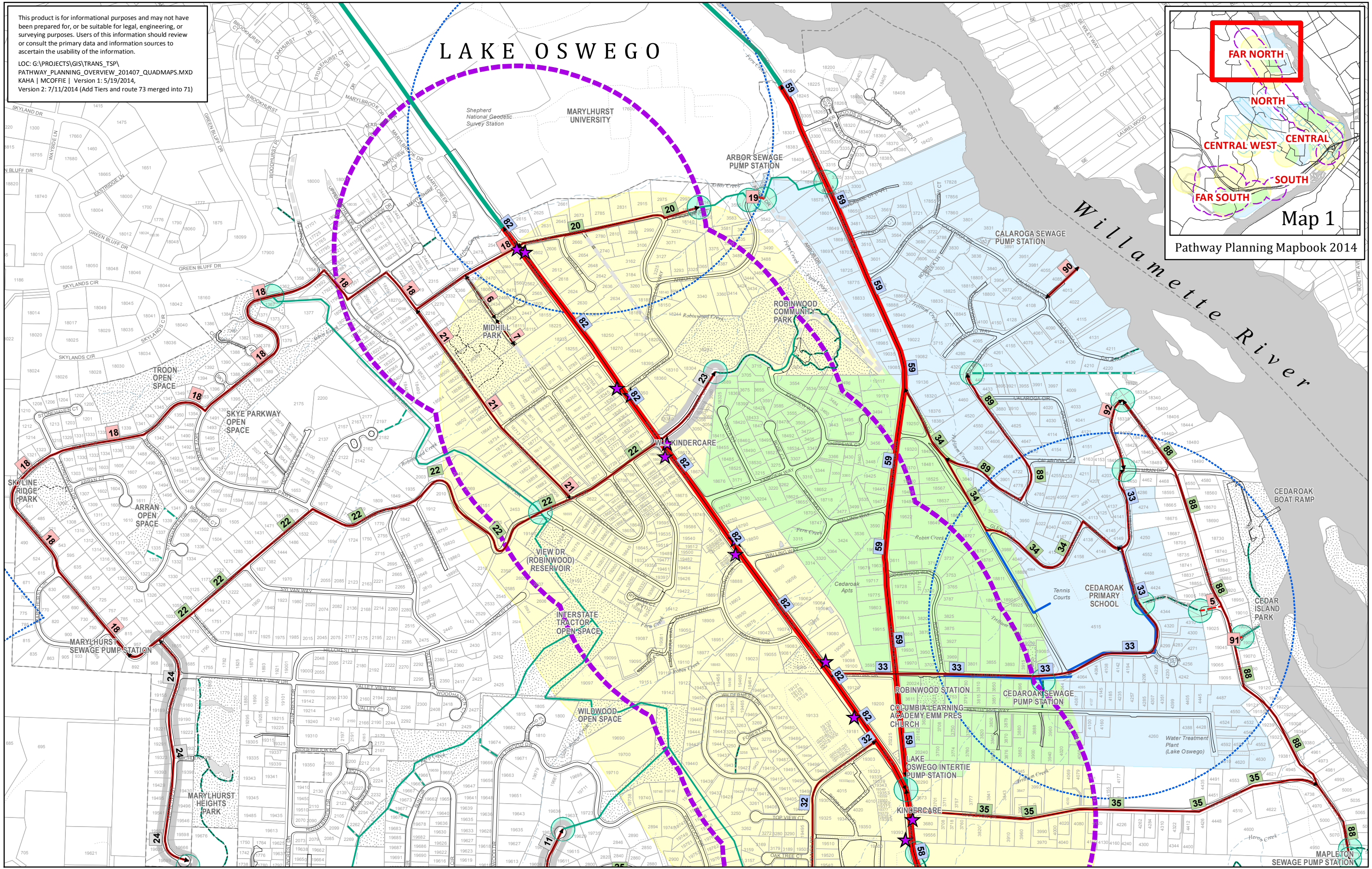
Tax Lot Parcel Base Map source: Clackamas County GIS
 All other map layers and map production: West Linn GIS

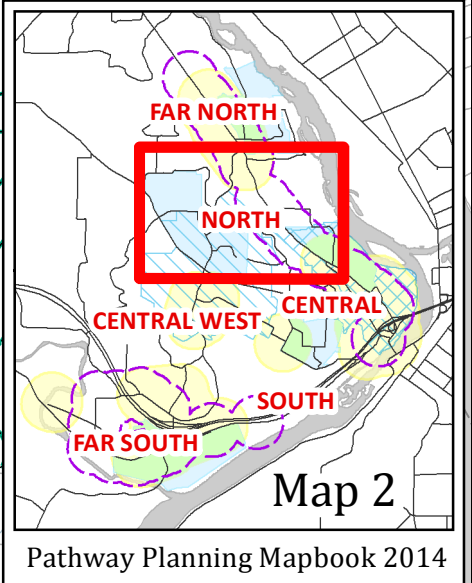
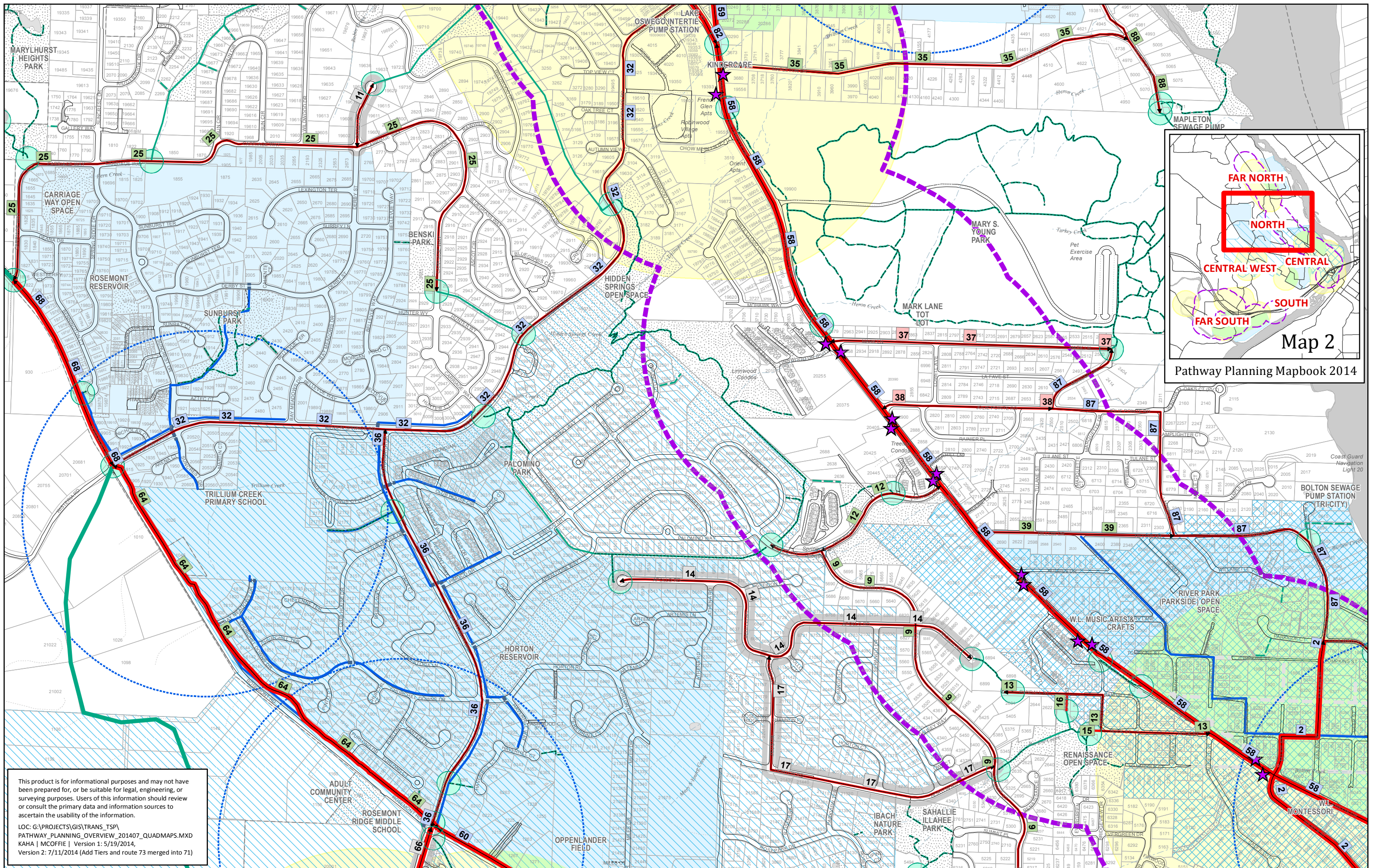


This product is for informational purposes and may not have been prepared for, or be suitable for legal, engineering, or surveying purposes. Users of this information should review or consult the primary data and information sources to ascertain the usability of the information.

LOC: G:\PROJECTS\GIS\TRANS_TSP\ PATHWAY_PLANNING_OVERVIEW_201407_QUADMAPS.MXD
KAHA | MCOFFIE | Version 1: 5/19/2014,
Version 2: 7/11/2014 (Add Tiers and route 73 merged into 71)

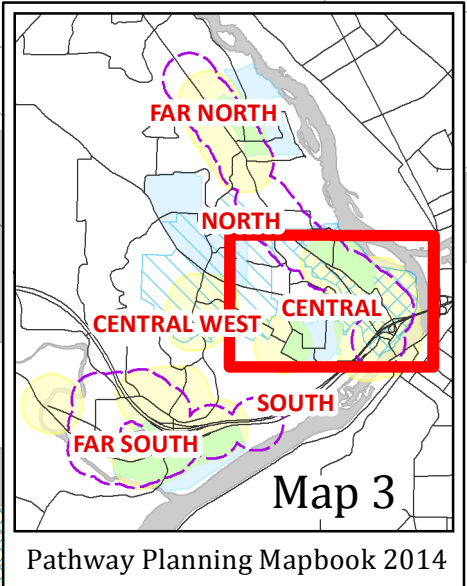
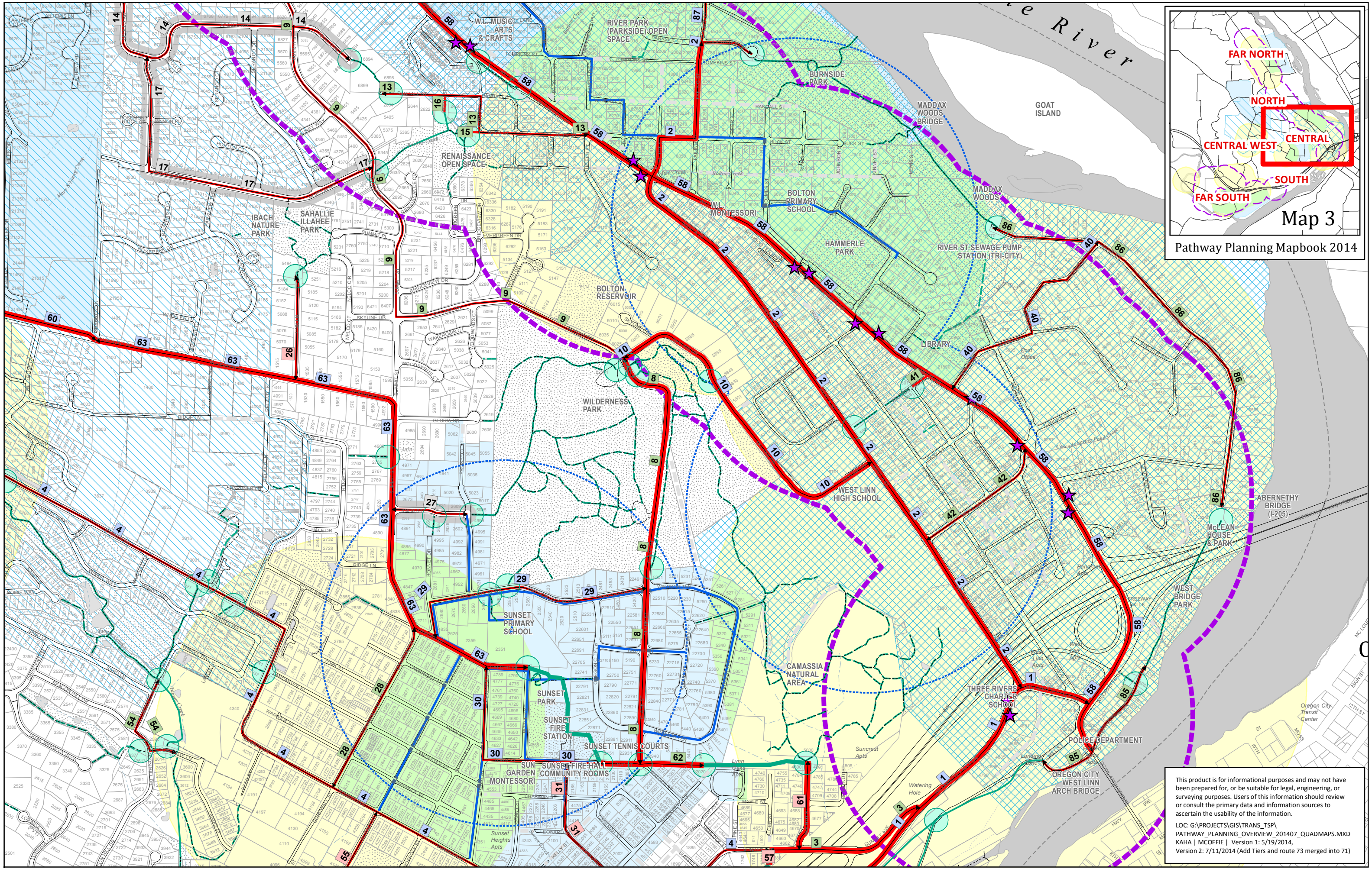
LAKE OSWEGO





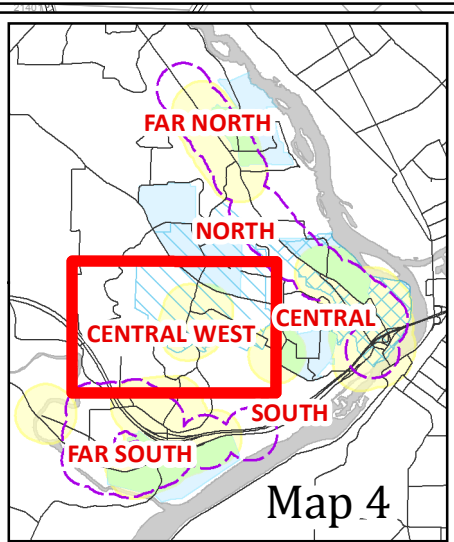
This product is for informational purposes and may not have been prepared for, or be suitable for legal, engineering, or surveying purposes. Users of this information should review or consult the primary data and information sources to ascertain the usability of the information.

LOC: G:\PROJECTS\GIS\TRANS_TSP\PATHWAY_PLANNING_OVERVIEW_201407_QUADMAPS.MXD
 KAH | MCOFFIE | Version 1: 5/19/2014,
 Version 2: 7/11/2014 (Add Tiers and route 73 merged into 71)



This product is for informational purposes and may not have been prepared for, or be suitable for, legal, engineering, or surveying purposes. Users of this information should review or consult the primary data and information sources to ascertain the usability of the information.

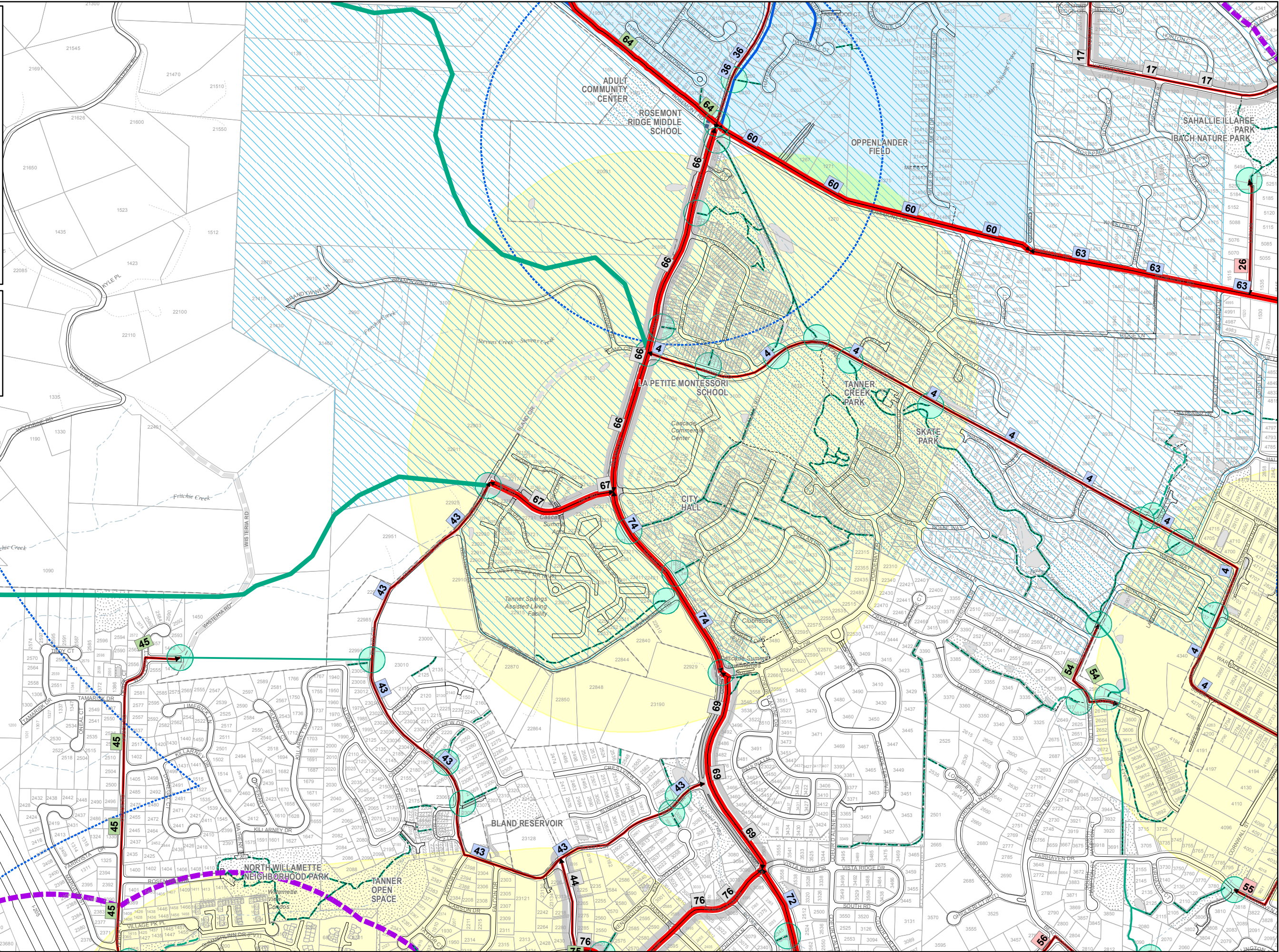
LOC: G:\PROJECTS\GIS\TRANS_TSP\PATHWAY_PLANNING_OVERVIEW_201407_QUADMAPS.MXD
 KAHA | MCOFFIE | Version 1: 5/19/2014,
 Version 2: 7/11/2014 (Add Tiers and route 73 merged into 71)

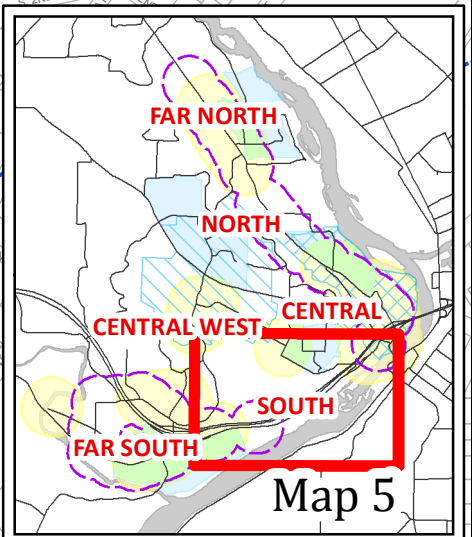
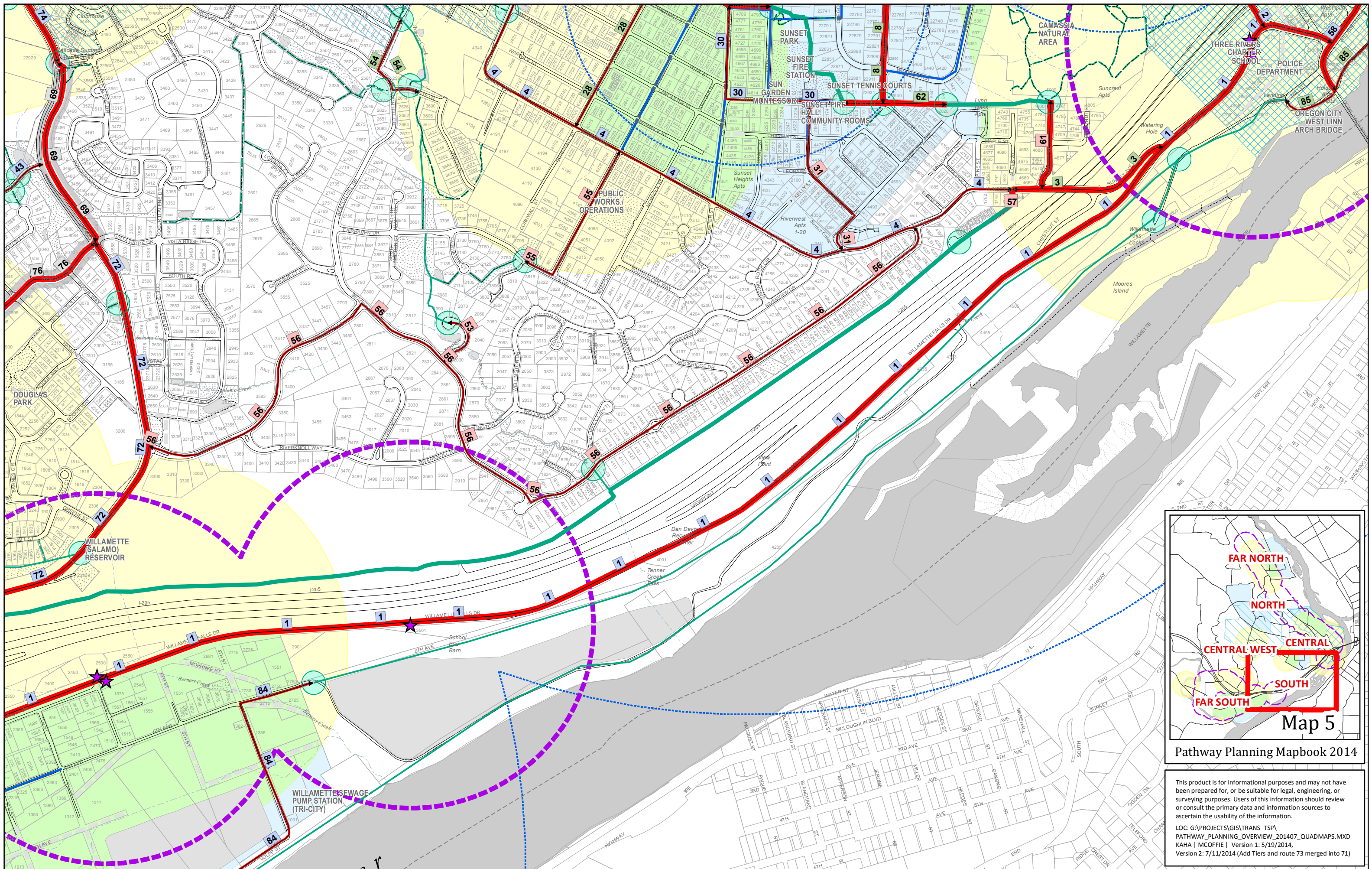


Map 4
Pathway Planning Mapbook 2014

This product is for informational purposes and may not have been prepared for, or be suitable for legal, engineering, or surveying purposes. Users of this information should review or consult the primary data and information sources to ascertain the usability of the information.

LOC: G:\PROJECTS\GIS\TRANS_TSP\ PATHWAY_PLANNING_OVERVIEW_201407_QUADMAPS.MXD
 KAH | MCOFFIE | Version 1: 5/19/2014,
 Version 2: 7/11/2014 (Add Tiers and route 73 merged into 71)

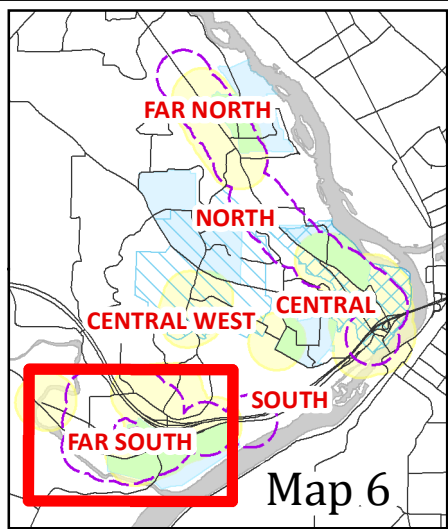
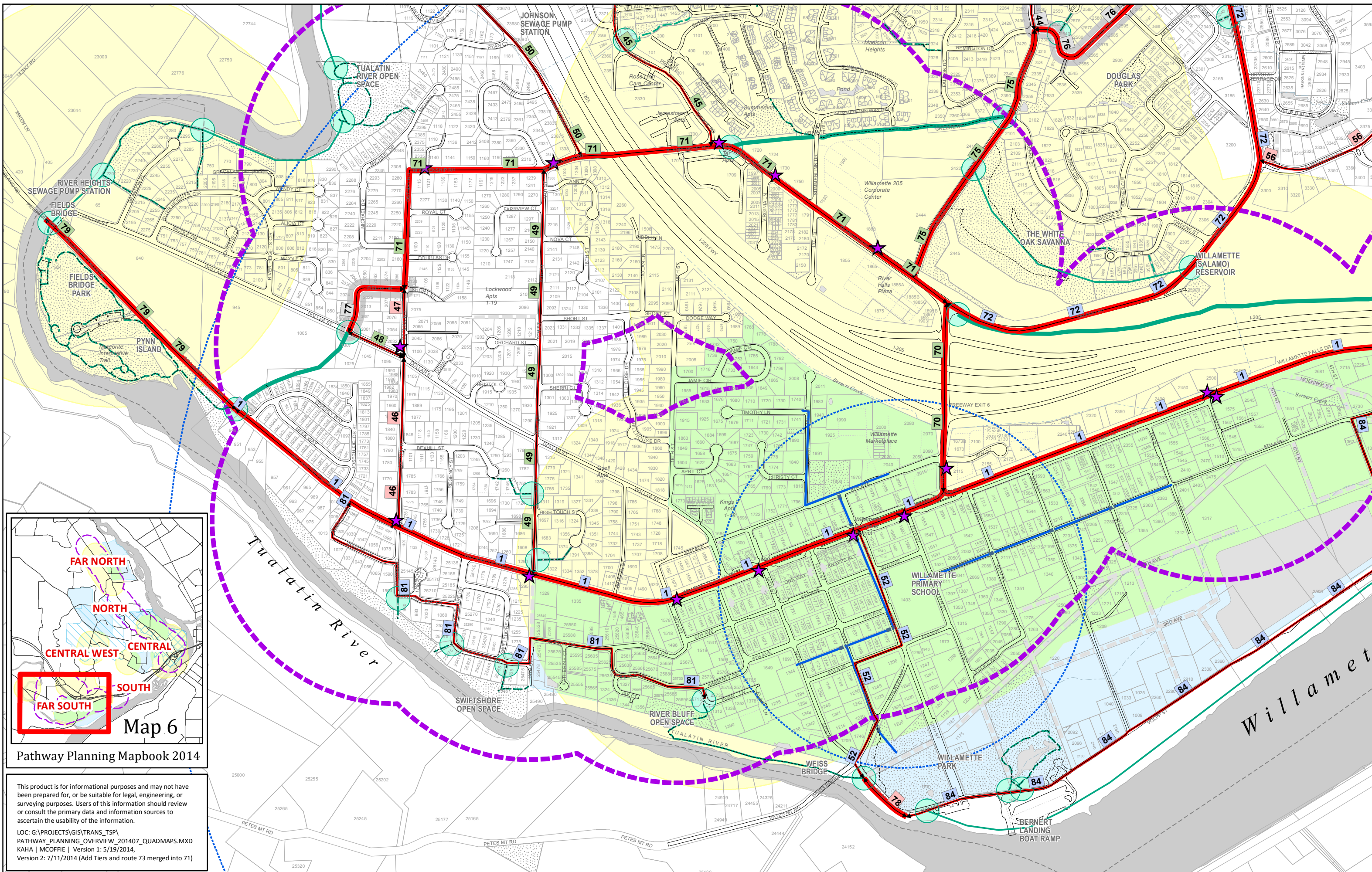




Pathway Planning Mapbook 2014

This product is for informational purposes and may not have been prepared for, or be suitable for legal, engineering, or surveying purposes. Users of this information should review or consult the primary data and information sources to ascertain the usability of the information.

LOC: G:\PROJECTS\GIS\TRANS_TSP\PATHWAY_PLANNING_OVERVIEW_201407_QUADMAPS.MXD
 KAHA | MCOFFIE | Version 1: 5/19/2014,
 Version 2: 7/11/2014 (Add Tiers and route 73 merged into 71)



Map 6

Pathway Planning Mapbook 2014

This product is for informational purposes and may not have been prepared for, or be suitable for legal, engineering, or surveying purposes. Users of this information should review or consult the primary data and information sources to ascertain the usability of the information.

LOC: G:\PROJECTS\GIS\TRANS_TSP\ PATHWAY_PLANNING_OVERVIEW_201407_QUADMAPS.MXD
 KAH | MCOFFIE | Version 1: 5/19/2014,
 Version 2: 7/11/2014 (Add Tiers and route 73 merged into 71)