

Project Goals

- Create distinct, yet complementary identities for each of the 4 regions, that are on par with neighboring city medians
- Incorporate existing vegetation, including trees, where possible
- Increase driver visibility by reducing sightline obstructions
- Add color and interest to roadway experience, without creating excessive maintenance requirements
- Improve soil conditions, which will lead to decreased plant mortality rates
- Create planting design that can be installed in phases, taking advantage of planting during the rainy season
- Provide annual maintenance outline

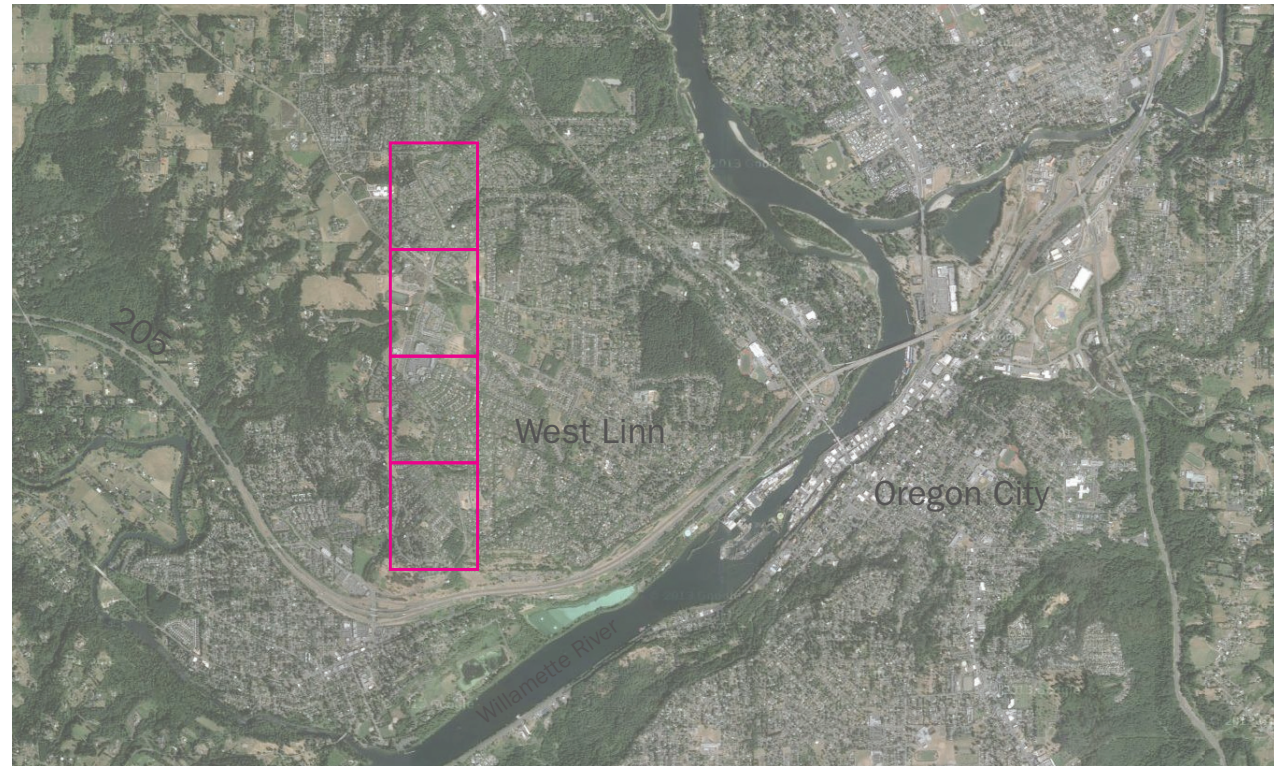
Project Design Team

Walker Macy:

Mike Zilis, Principal-in-Charge
 Ben Vaughn, Project Manager
 Claudia Sims, Landscape Designer

City of West Linn:

Lance Calvert, Public Works Director
 Jeffrey Randall, Transportation Supervisor
 Michael Perkins, Park Development Coordinator and City Arborist



Lake Oswego



- Highly varied planting design, with a higher percentage of perennials used for color, texture, and interest
- Incorporation of planters and decorative elements
- Deciduous large canopy trees
- 25% evergreen
- Higher maintenance level

Arctostaphylos uva-ursi - Kinnikinnick
Berberis thunbergii atropurpurea - Purple Barberry
Bergenia crassifolia - Pigsqueak
Geranium sp. - Geranium
Helleborus orientalis - Hellebore
Nandina domestica - Heavenly Bamboo
Rudbeckia hirta - Yellow Coneflower
Magnolia sp. - Dwarf Magnolia
Viburnum davidii - David Viburnum

Wilsonville



- Pared-down plant palette, with emphasis on simple seasonal shifts in color and contrasting green tones
- Spring blooming ornamental deciduous trees
- 25% evergreen
- Low maintenance

Berberis thunbergii atropurpurea - Purple Barberry
Lonicera pileata - Boxleaf Honeysuckle
Prunus sp. - Ornamental Cherry Tree
Rosa sp. - Rose

Rosemont Ridge



- Somewhat varied plant palette, with emphasis on massing of grassy textures and meadow-like perennials
- Minimal use of trees
- 25% evergreen
- Moderate maintenance level

Anemone hupehensis var. *sinensis* - Japanese Anemone
Calamagrostis acutiflora 'Karl Forester' - Feather Reed Grass
Pennisetum alopecuroides 'Hameln' - Fountain Grass
Potentilla fruticosa - Shrubby Cinquefoil
Rosa rugosa - Dog Rose

Meadows Shopping Center



- Non-flowering plant palette, with emphasis on textural shifts and compact growth
- 50% evergreen
- Low maintenance

Lonicera pileata - Boxleaf Honeysuckle
Pennisetum alopecuroides 'Hameln' - Fountain Grass
Rosa rugosa - Dog Rose
Ulmus parvifolia - Chinese Elm
Viburnum davidii - David Viburnum



- Blue Rug Juniper 60% cover, with large portions of dead plant material
- Soil appears to be compacted and lacking in fertility

- Remove all existing roots and vegetation
- Import topsoil, scarify subgrade



- Shrubby Juniper, 5' Forsythia, and declining Weeping Cherry Trees existing
- Minimal exposed soil
- Shrub height and hanging tree branches obstruct visibility

- Remove all existing roots and vegetation
- Import topsoil, scarify subgrade



- Blue Rug Juniper 30% cover, with large portions of dead plant material
- 2 large Weeping Cherry Trees
- Soil appears to be compacted and lacking in fertility

- Remove all existing roots and vegetation
- Import topsoil, scarify subgrade



- Arctostaphylos 30% cover, with large portions of dead plant material
- Soil appears to be compacted and lacking in fertility

- Remove all existing roots and vegetation
- Import topsoil, scarify subgrade



- Large patches of overgrown shrubby Juniper
- Large Douglas Fir Tree
- Approx. 1:1 slopes currently retained by existing vegetation
- Large bare areas

- Remove all existing roots and vegetation, except for large juniper shrubs which should be removed during the dry summer months to prevent erosion and soil runoff
- Remove Douglas Fir Tree
- Import topsoil, scarify subgrade
- Install erosion control mats on slopes greater than 3:1



Acer freemanii 'Autumn Blaze'
Autumn Blaze Red Maple
2" caliper or larger



Hidden Springs/Santa Anita Drive Median Planting Concept



Lonicera pileata
Boxleaf Honeysuckle
#1 container



Nandina domestica 'Moon Bay'
Moon Bay Heavenly Bamboo
#1 container



Pennisetum alopecuroides 'Hameln'
Fountain Grass
#1 container

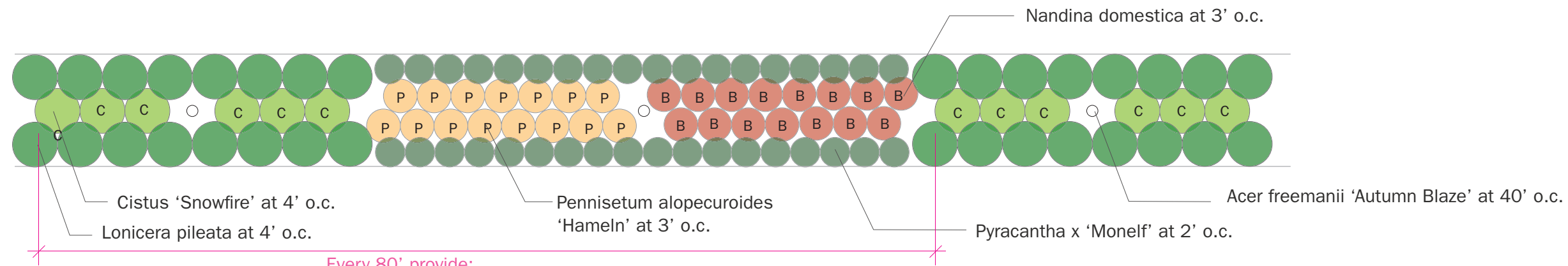


Cistus 'Snowfire'
Snowfire White Rockrose
#3 container



Pyracantha x 'Monelf'
Red Elf Pyracantha
#1 container

Typical Planting Layout

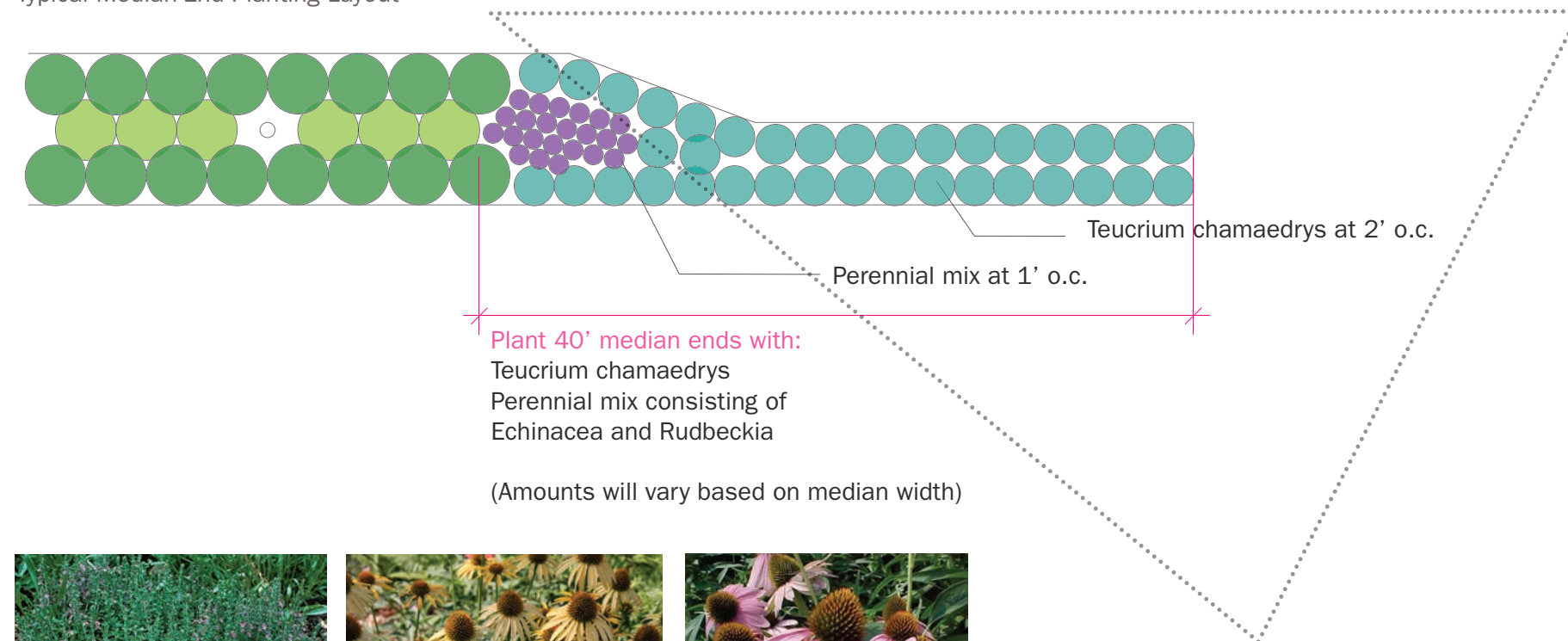


Every 80' provide:
 24 Lonicera pileata
 9 Cistus 'Snowfire'
 15 Nandina domestica
 36 Berberis buxifolia 'Nana'
 15 Pennisetum alopecuroides 'Hameln'
 2 Acer freemanii 'Autumn Blaze'

PLANT SPACING NOTES:

- A. Where median width is less than 2', install concrete pavers with concrete sub-base. Alternatively provide 2" mulch with weed barrier if concrete pavers are not installed at this time.
- B. Where vehicle visibility is an issue, offset typical planting layout 40' from end of median and plant as noted in the typical median-end planting layout. At view triangles, do not plant plants greater than 24" height at maturity or any plantings if it obscures views of oncoming cars. We recommend that each intersection view triangles be verified in the field prior to planting.

Typical Median-End Planting Layout



Plant 40' median ends with:
 Teucrium chamaedrys
 Perennial mix consisting of
 Echinacea and Rudbeckia

(Amounts will vary based on median width)

PLANT INSTALLATION NOTES:

1. Install erosion control measure as required.
2. Provide jute netting on all slopes greater than 3:1.
3. Mulch all planting with bark dust at minimum 2" depth. Hold bark dust away from trunks of trees and shrubs.
4. Set root ball of shrubs and trees 1" above finish grade of the soil.
5. Stake all trees with two 2" dia. round 8' ht. poles and tree ties.
6. Plant shrubs and trees with 20-12-5 slow release fertilizer tablets. Provide quantity of tablets per manufacturer instruction.
7. Provide hand watering of all plantings without irrigation during summer months when there is not enough precipitation to maintain soil moisture. We recommend hand watering when there is no precipitation between July 1st and October 1st for the first and second summer after planting. After two years, no irrigation should be necessary unless there is an unusually long drought.
8. Consider hardscape, such as a broom finish concrete surface, in areas where islands are four feet wide or less and /or where visibility is an issue .



Teucrium chamaedrys
 Wall Germander
 #1 container



Rudbeckia fulgida 'Goldsturm'
 Black-Eyed Susan
 #1 container



Echinacea purpurea 'Leuchstern'
 Coneflower
 #1 container



- 12 trees
- 138 Lonicera pileata
- 52 Cistus
- 86 Nandina domestica 'Moon Bay'
- 207 Pyracantha x 'Monelf'
- 86 Pennisetum setaceum 'Hameln'



- 5 trees
- 64 Lonicera pileata
- 24 Cistus
- 40 Nandina domestica 'Moon Bay'
- 96 Pyracantha x 'Monelf'
- 40 Pennisetum setaceum 'Hameln'



- 3 trees
- 33 Lonicera pileata
- 12 Cistus
- 21 Nandina domestica 'Moon Bay'
- 50 Pyracantha x 'Monelf'
- 21 Pennisetum setaceum 'Hameln'



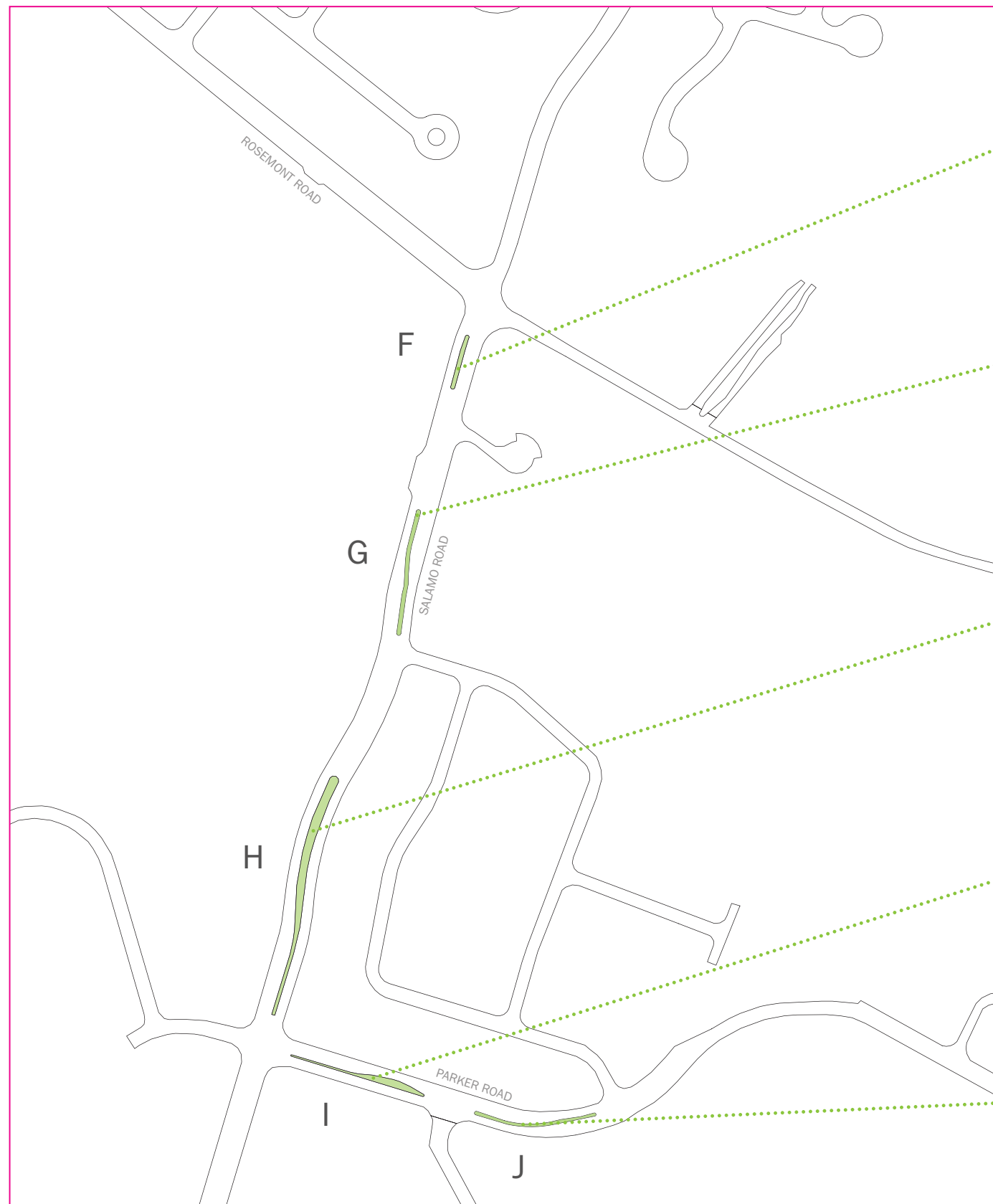
- 5 trees
- 48 Lonicera pileata
- 18 Cistus
- 30 Nandina domestica 'Moon Bay'
- 72 Pyracantha x 'Monelf'
- 30 Pennisetum setaceum 'Hameln'



- 12 trees
- 157 Lonicera pileata
- 59 Cistus
- 98 Nandina domestica 'Moon Bay'
- 236 Pyracantha x 'Monelf'
- 98 Pennisetum setaceum 'Hameln'

LATIN NAME	COMMON NAME	SIZE	SPACING/PLANTING NOTES	MAINTENANCE NOTES
Acer freemanii 'Autumn Blaze' Acer freemanii 'Armstrong'	Autumn Blaze Maple Armstrong Maple	2 in. cal.	40' o.c.	Prune as needed to maintain 10' minimum distance from canopy to ground
Pyracantha x 'Monelf'	Red Elf Pyracantha	#1	2' o.c. Min. 1' from curb	Do not prune; dwarf form should remain compact without pruning
Cistus 'Snowfire'	Snowfire Rock Rose	#3	4' o.c. Min. 4' from curb	Prune every 2-3 years to maintain compact form
Echinacea purpurea 'Leuchtstern'	Purple Coneflower	#1	1' o.c. Min. 1' from curb	Prune to within 6" of ground every February
Lonicera pileata	Boxleaf Honeysuckle	#1	4' o.c. Min. 2' from curb	Prune annually along roadway to control growth
Nandina domestica 'Moon Bay' Nandina domestica 'Gulf Stream'	Moon Bay Dwarf Heavenly Bamboo Gulf Stream Dwarf Heavenly Bamboo	#1	3' o.c. Min. 18" from curb	Do not prune; dwarf form should remain compact without pruning
Pennisetum alopecuroides 'Hameln' Pennisetum orientale 'Karly Rose'	Hameln Fountain Grass Pink Fountain Grass	#1	3' o.c. Min. 18" from curb	Prune to within 6" of ground every February
Rudbeckia fulgida 'Goldsturm'	Black-Eyed Susan	#1	1' o.c. Min. 1" from curb	Prune to within 6" of ground every February
Teucrium chamaedrys	Wall Germander	#1	2' o.c. Min. 1' from curb	Do not prune; dwarf form should remain compact without pruning

*Alternate variety



- Dense cotoneaster
- No trees
- No exposed soil
- **Selectively remove cotoneaster to accomodate new trees**



- Dense cotoneaster, with Rosa nutkana growing through in patches
- Marginally healthy Katsura Trees, though some appear to be failing
- No exposed soil
- **Selectively remove cotoneaster to accomodate new trees**
- **Remove Roses**
- **Remove Katsura trees**



- Dense cotoneaster, with Rosa nutkana growing through in patches
- Marginally healthy Katsura Trees, though some appear to be failing
- Half of median planter completely bare
- **Remove cotoneaster to accomodate new trees**
- **Replant cotoneaster in bare areas at density similar to existing areas**
- **Remove Roses**
- **Remove Katsura trees**
- **Replant with following Region 3 design.**



- Dense cotoneaster, with Rosa nutkana growing through in patches
- Marginally healthy Katsura Trees, though some appear to be failing
- No exposed soil
- **Selectively remove cotoneaster to accomodate new trees**
- **Remove roses**
- **Remove Katsura trees**



- Dense cotoneaster, with Rosa nutkana growing through in patches
- Marginally healthy Katsura Trees, though some appear to be failing
- No exposed soil
- **Remove roses**
- **Remove Katsura trees**



Acer freemanii 'Autumn Blaze'



Cotoneaster horizontalis



Salamo Road Medians

LATIN NAME	COMMON NAME	SIZE	SPACING/PLANTING NOTES	MAINTENANCE NOTES
Acer freemanii 'Autumn Blaze' Acer freemanii 'Armstrong'	Autumn Blaze Maple Armstrong Maple	2 in. cal.	40' o.c.	Prune as needed to maintain 10' minimum distance from canopy to ground



- Arctostaphylos ground cover
- Berberis, Dwarf Ilex, and Cornus kelseyi planted in groups of two
- Marginally healthy Katsura Trees, though some appear to be failing

- Remove Arctostaphylos to accomodate new trees and shrubs
- Remove Katsura trees
- Remove barberry and replace with dwarf variety



- Arctostaphylos ground cover
- Large Chinese Elm trees

- Remove Arctostaphylos to accomodate new trees and shrubs
- Limb-up Elm trees to 10' to remove visual obstructions at eye level



- Arctostaphylos ground cover
- Large Cornus stolonifera and Roses
- Large Chinese Elm trees

- Remove Arctostaphylos to accomodate new trees and shrubs
- Remove Cornus stolonifera; Roses to remain
- Limb-up Elm trees to 10' to remove visual obstructions at eye level



- Arctostaphylos ground cover
- Large Cornus stolonifera, Rosa nutkana, various overgrown shrubs
- Large Chinese Elm trees
- Extensive patches of exposed soil

- Remove Arctostaphylos to accomodate new trees and shrubs
- Remove Cornus stolonifera; Roses to remain
- Limb-up Elm trees to 10' to remove visual obstructions at eye level



- Arctostaphylos ground cover
- Large Cornus stolonifera, Rosa nutkana, various overgrown shrubs
- Large Chinese Elm trees
- Extensive patches of exposed soil

- Remove Arctostaphylos to accomodate new trees and shrubs
- Remove Cornus stolonifera; Roses to remain
- Limb-up Elm trees to 10' to remove visual obstructions at eye level



Salamo Road



Ulmus parvifolia
Chinese Elm



Berberis thunbergii 'Crimson Pygmy'
Purple Leaf Barberry



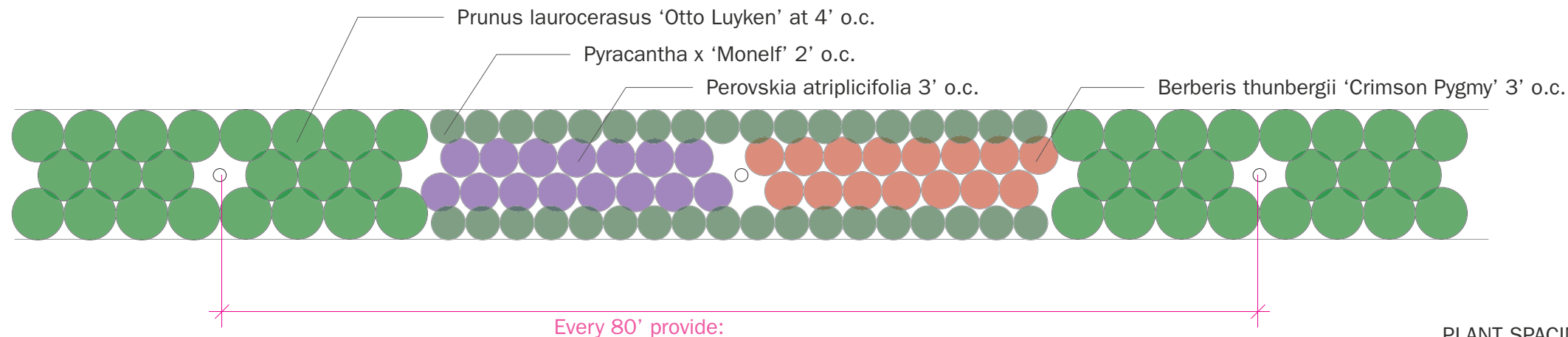
Perovskia atriplicifolia
Russian Sage



Pyracantha x 'Monelf'
Red Elf Pyracantha



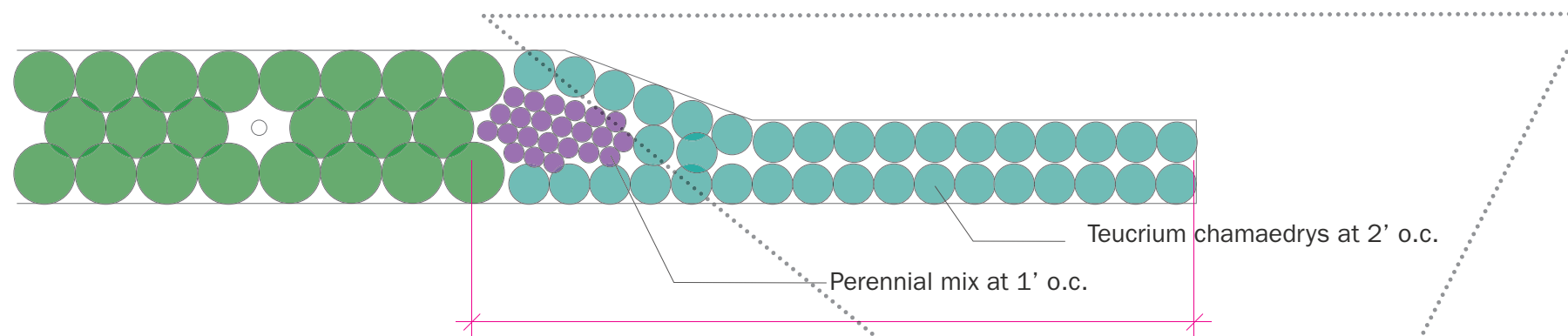
Prunus laurocerasus 'Otto Luyken'
Otto Luyken English Laurel



Every 80' provide:
 22 Prunus laurocerasus 'Otto Luyken'
 36 Pyracantha x 'Monelf'
 15 Berberis buxifolia 'Nana'
 15 Perovskia atriplicifolia

PLANT SPACING NOTES:

- A. Where median width is less than 2', install concrete pavers with concrete sub-base. Alternatively provide 2" mulch with weed barrier if concrete pavers are not installed at this time.
- B. Where vehicle visibility is an issue, offset typical planting layout 40' from end of median and plant as noted in the typical median-end planting layout. At view triangles, do not plant plants greater than 24" height at maturity or any plantings if it obscures views of oncoming cars. We recommend that each intersection view triangles be verified in the field prior to planting.



Plant 40' median ends with:
 Teucrium chamaedrys
 Perennial mix consisting of
 Echinacea and Rudbeckia

(Amounts will vary based on median width)

PLANT INSTALLATION NOTES:

1. Install erosion control measure as required.
2. Provide jute netting on all slopes greater than 3:1.
3. Mulch all planting with bark dust at minimum 2" depth. Hold bark dust away from trunks of trees and shrubs.
4. Set root ball of shrubs and trees 1" above finish grade of the soil.
5. Stake all trees with two 2" dia. round 8' ht. poles and tree ties.
6. Plant shrubs and trees with 20-12-5 slow release fertilizer tablets. Provide quantity of tablets per manufacturer instruction.
7. Provide hand watering of all plantings without irrigation during summer months when there is not enough precipitation to maintain soil moisture. We recommend hand watering when there is no precipitation between July 1st and October 1st for the first and second summer after planting. After two years, no irrigation should be necessary unless there is an unusually long drought.
8. Consider hardscape, such as a broom finish concrete surface, in areas where islands are four feet wide or less and /or where visibility is an issue .

Verify view triangle on-site



Teucrium chamaedrys
 Wall Germander
 #1 container



Rudbeckia fulgida 'Goldsturm'
 Black-Eyed Susan
 #1 container



Echinacea purpurea 'Leuchstern'
 Coneflower
 #1 container

LATIN NAME	COMMON NAME	SIZE	SPACING/PLANTING NOTES	MAINTENANCE NOTES
Echinacea purpurea 'Leuchtstern'	Purple Coneflower	#1	1' o.c. Min. 1' from curb	Prune to within 6" of ground every February
Nandina domestica 'Moon Bay' *Nandina domestica 'Gulf Stream'	Moon Bay Dwarf Heavenly Bamboo *Gulf Stream Dwarf Heavenly Bamboo	#1	3' o.c. Min. 18" from curb	Do not prune; dwarf form should remain compact without pruning
Perovskia atriplicifolia	Russian Sage	#1	3' o.c. Min. 18" from curb	Prune to within 6" of ground every February
Prunus laurocerasus 'Otto Luyken'	Otto Luyken Dwarf English Laurel	#3	4' o.c. Min. 2' from curb	Do not shear; dwarf form should remain compact without pruning
Pyracantha x 'Monelf'	Red Elf Pyracantha	#1	2' o.c. Min. 1' from curb	Do not prune; dwarf form should remain compact without pruning
Rudbeckia fulgida 'Goldsturm'	Black-Eyed Susan	#1	1' o.c. Min.1" from curb	Prune to within 6" of ground every February
Teucrium chamaedrys	Wall Germander	#1	2' o.c. Min. 1' from curb	Do not prune; dwarf form should remain compact without pruning

*Alternate variety



- Creeping Cotoneaster ground cover
- Liquidambar styraciflua (Sweetgum) trees

- **Selectively remove cotoneaster to accomodate new trees and shrubs**
- **Replant cotoneaster in bare patches at ends of medians**
- **Add Sweetgum as needed to recreate regular spacing**



- Creeping Cotoneaster ground cover
- Liquidambar styraciflua (Sweetgum) trees
- Large areas of exposed soil

- **Replant cotoneaster in bare patches at ends of medians**
- **Add Sweetgum as needed to recreate regular spacing**



- Creeping Cotoneaster ground cover
- Liquidambar styraciflua (Sweetgum) trees
- Large areas of exposed soil

- **Selectively remove cotoneaster to accomodate new trees and shrubs**
- **Replant cotoneaster in bare patches at ends of medians**
- **Add Sweetgum as needed to recreate regular spacing**



- Creeping Cotoneaster ground cover
- Liquidambar styraciflua (Sweetgum) trees
- Large areas of exposed soil
- Scattered weedy patches

- **Selectively remove cotoneaster to accomodate new trees and shrubs**
- **Replant cotoneaster in bare patches at ends of medians**
- **Add Sweetgum as needed to recreate regular spacing**



- Creeping Cotoneaster ground cover
- Liquidambar styraciflua (Sweetgum) trees
- Large areas of exposed soil
- Scattered weedy patches

- **Selectively remove cotoneaster to accomodate new trees and shrubs**
- **Replant cotoneaster in bare patches at ends of medians**
- **Add Sweetgum as needed to recreate regular spacing**



Salamo Road Median



Nandina domestica 'Moon Bay'
Moon Bay Heavenly Bamboo



Lonicera pileata
Boxleaf Honeysuckle



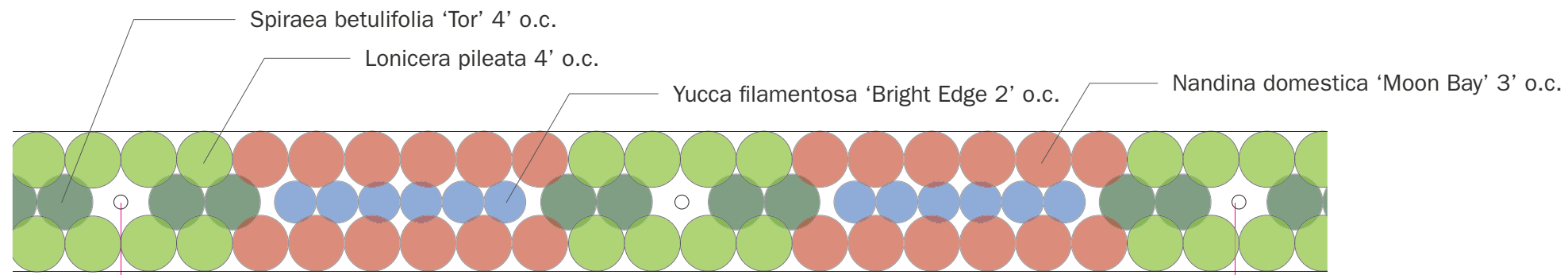
Spiraea betulifolia 'Tor'
Birchleaf Spirea



Liquidambar styraciflua
Sweetgum

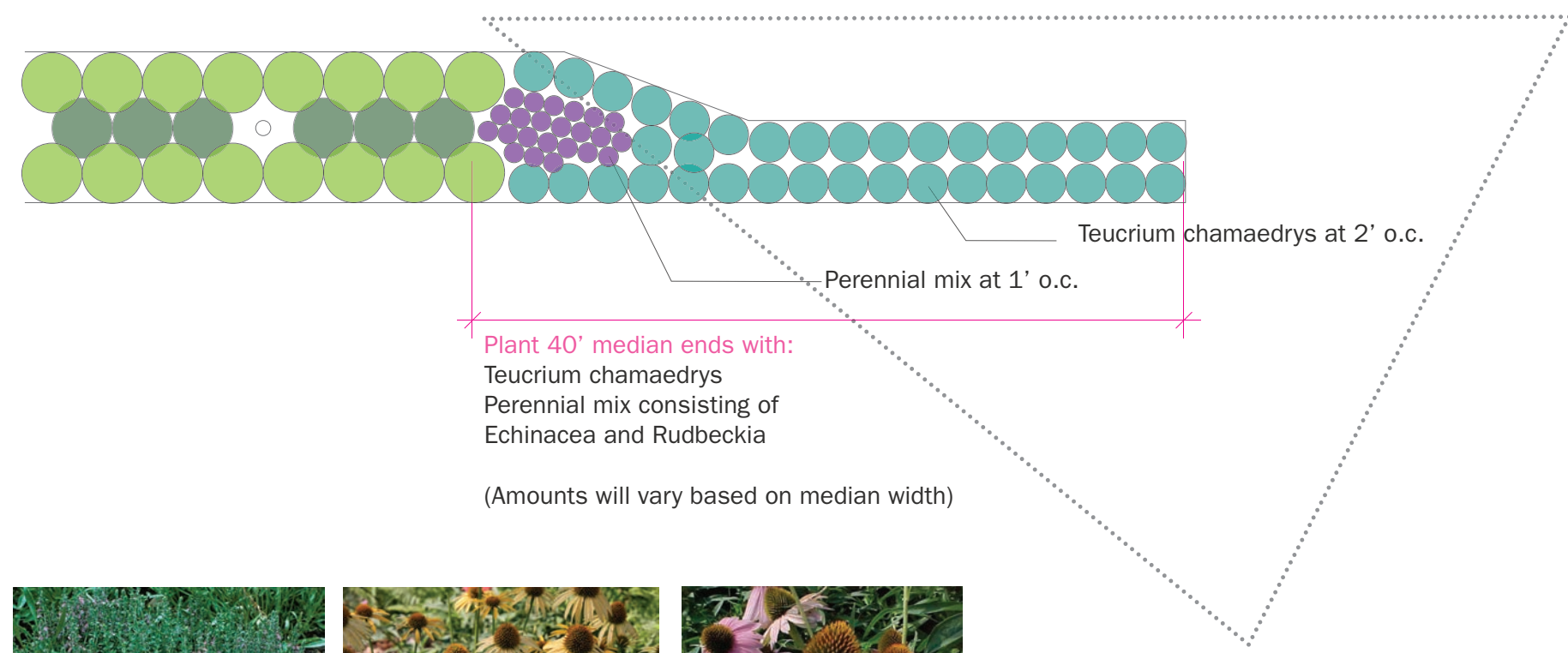


Yucca filamentosa 'Bright Edge'
Bright Edge Yucca



Every 80' provide:

- 8 Spiraea betulifolia
- 16 Lonicera pileata
- 12 Yucca filamentosa 'Bright Edge
- 24 Nandina domestica 'Moon Bay'



Plant 40' median ends with:
 Teucrium chamaedrys
 Perennial mix consisting of
 Echinacea and Rudbeckia

(Amounts will vary based on median width)



Teucrium chamaedrys
 Wall Germander
 #1 container



Rudbeckia fulgida 'Goldsturm'
 Black-Eyed Susan
 #1 container



Echinacea purpurea 'Leuchstern'
 Coneflower
 #1 container

PLANT SPACING NOTES:

- A. Where median width is less than 2', install concrete pavers with concrete sub-base. Alternatively provide 2" mulch with weed barrier if concrete pavers are not installed at this time.
- B. Where vehicle visibility is an issue, offset typical planting layout 40' from end of median and plant as noted in the typical median-end planting layout. At view triangles, do not plant plants greater than 24" height at maturity or any plantings if it obscures views of oncoming cars. We recommend that each intersection view triangles be verified in the field prior to planting.

PLANT INSTALLATION NOTES:

1. Install erosion control measure as required.
2. Provide jute netting on all slopes greater than 3:1.
3. Mulch all planting with bark dust at minimum 2" depth. Hold bark dust away from trunks of trees and shrubs.
4. Set root ball of shrubs and trees 1" above finish grade of the soil.
5. Stake all trees with two 2" dia. round 8' ht. poles and tree ties.
6. Plant shrubs and trees with 20-12-5 slow release fertilizer tablets. Provide quantity of tablets per manufacturer instruction.
7. Provide hand watering of all plantings without irrigation during summer months when there is not enough precipitation to maintain soil moisture. We recommend hand watering when there is no precipitation between July 1st and October 1st for the first and second summer after planting. After two years, no irrigation should be necessary unless there is an unusually long drought.
8. Consider hardscape, such as a broom finish concrete surface, in areas where islands are four feet wide or less and /or where visibility is an issue .

LATIN NAME	COMMON NAME	SIZE	SPACING/PLANTING NOTES	MAINTENANCE NOTES
Echinacea purpurea 'Leuchtstern'	Purple Coneflower	#1 cont.	1' o.c. Min. 1' from curb	Prune to within 6" of ground every February
Lonicera pileata	Boxleaf Honeysuckle	#2 cont.	4' o.c. Min. 2' from curb	Prune annually along roadway to control growth
Nandina domestica 'Moon Bay' Nandina domestica 'Gulf Stream'	Moon Bay Dwarf Heavenly Bamboo Gulf Stream Dwarf Heavenly Bamboo	#1 cont.	3' o.c. Min. 18" from curb	Do not prune; dwarf form should remain compact without pruning
Prunus laurocerasus 'Otto Luyken'	Otto Luyken Dwarf English Laurel	#3 cont.	4' o.c. Min. 2' from curb	Do not shear; dwarf form should remain compact without pruning
Pyracantha x 'Monelf'	Red Elf Pyracantha	#1 cont.	2' o.c. Min. 1' from curb	Do not prune; dwarf form should remain compact without pruning
Rudbeckia fulgida 'Goldsturm'	Black-Eyed Susan	#1 cont.	1' o.c. Min.1" from curb	Prune to within 6" of ground every February
Spiraea betulifolia 'Tor'	Birchleaf Spirea	#1 cont.	4' o.c. Min.1" from curb	Prune to within 6" of ground every February
Yucca filamentosa 'Bright Edge'	Bright Edge Yucca	#1 cont.	2' o.c. Min. 1' from curb	Do not prune; dwarf form should remain compact without pruning

*Alternate variety