

Ridge Lane Water Line - Locate Paint 3/27- 4/30/2009



- Proposed Hydrant BLACK - Possible Private Sewer Lines RED - Electric Power Lines
- ⦿ Proposed Valve BLUE - Potable Water Lines ORANGE - Communication Lines
- ⊕ Proposed Meter GREEN - Sewer or Storm Lines WHITE - Proposed New Water Main
- YELLOW - Gas Lines Taxlots

This product is for informational purposes and may not have been prepared for, or be suitable for legal, engineering, or surveying purposes. Users of this information should review or consult the primary data and information sources to ascertain the usability of the information



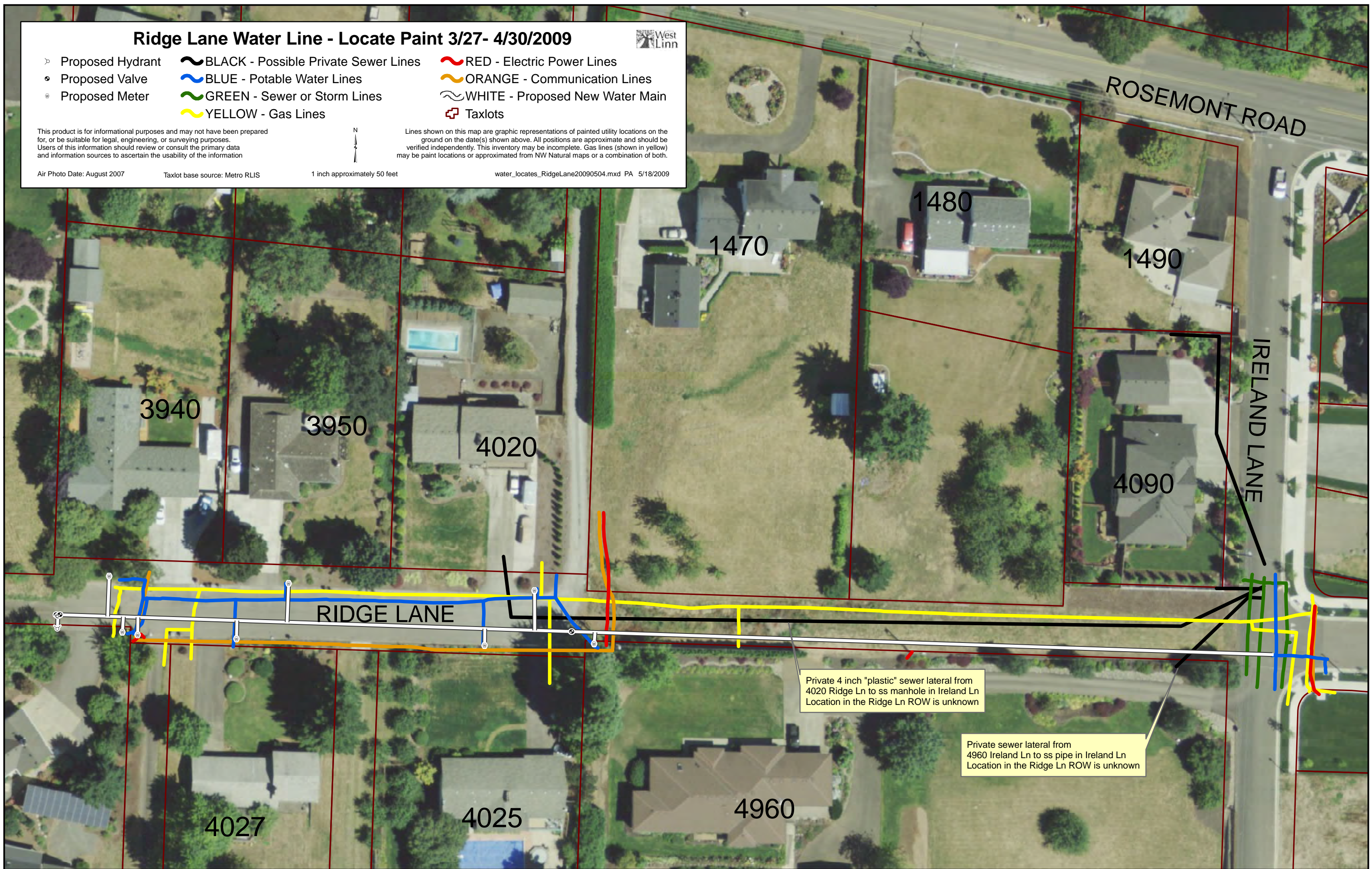
Lines shown on this map are graphic representations of painted utility locations on the ground on the date(s) shown above. All positions are approximate and should be verified independently. This inventory may be incomplete. Gas lines (shown in yellow) may be paint locations or approximated from NW Natural maps or a combination of both.

Air Photo Date: August 2007

Taxlot base source: Metro RLIS

1 inch approximately 50 feet

water_locates_RidgeLane20090504.mxd PA 5/18/2009



Private 4 inch "plastic" sewer lateral from 4020 Ridge Ln to ss manhole in Ireland Ln
Location in the Ridge Ln ROW is unknown

Private sewer lateral from 4960 Ireland Ln to ss pipe in Ireland Ln
Location in the Ridge Ln ROW is unknown