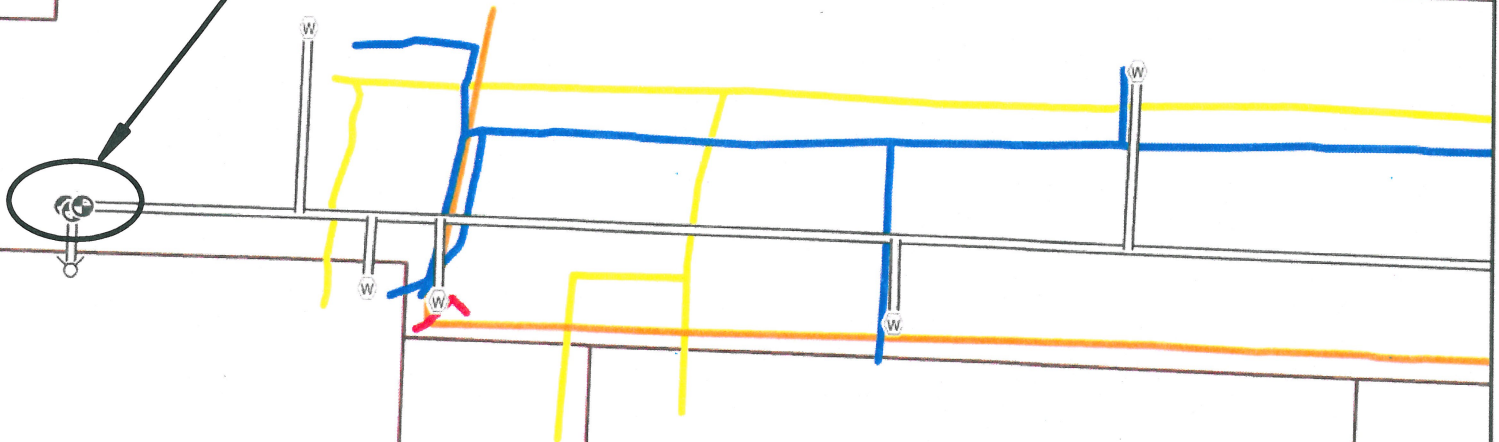
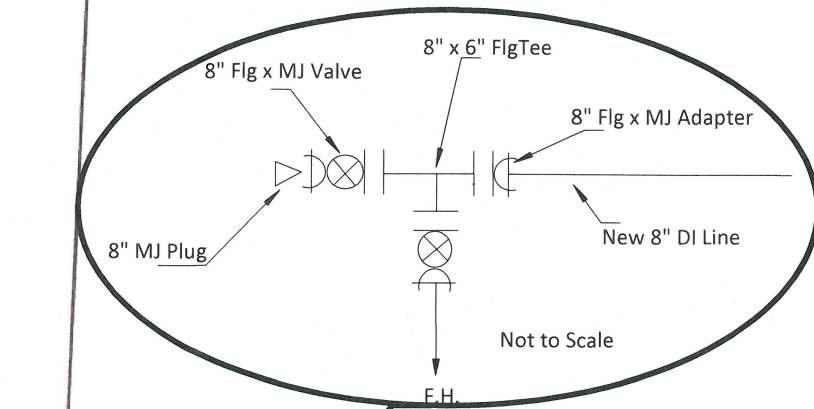


3950



Ridge Lane Water Line - Locate Paint 3/27- 4/30/2009

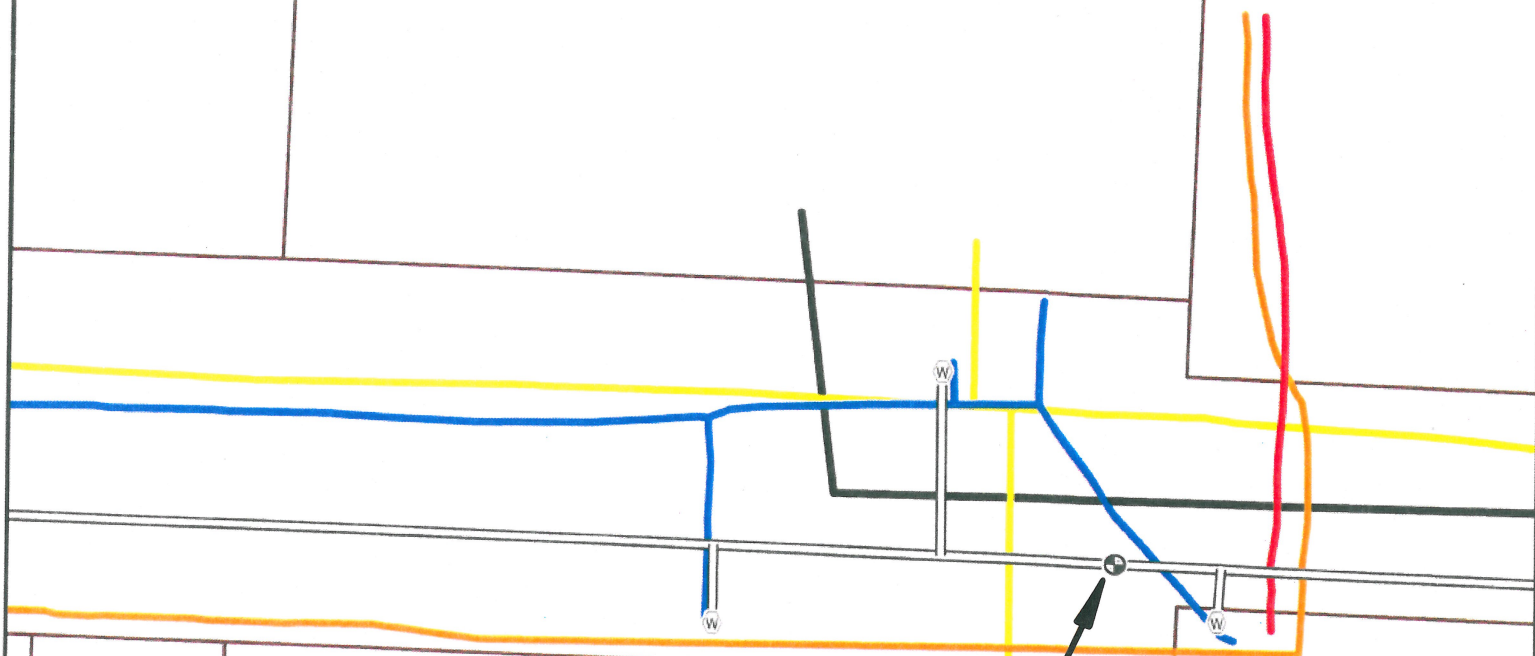
- | | | |
|--------------------|--|-----------------------------------|
| ⊗ Proposed Hydrant | ~ BLACK - Possible Private Sewer Lines | ~ RED - Electric Power Lines |
| ⊕ Proposed Valve | ~ BLUE - Potable Water Lines | ~ ORANGE - Communication Lines |
| ⊙ Proposed Meter | ~ GREEN - Sewer or Storm Lines | ~ WHITE - Proposed New Water Main |
| | ~ YELLOW - Gas Lines | ⊕ Taxlots |

This product is for informational purposes and may not have been prepared for, or be suitable for legal, engineering, or surveying purposes. Users of this information should review or consult the primary data and information sources to ascertain the usability of the information.

Lines shown on this map are graphic representations of painted utility locations on the ground on the date(s) shown above. All positions are approximate and should be verified independently. This inventory may be incomplete. Gas lines (shown in yellow) may be paint locations or approximated from NW Natural maps or a combination of both.

050

4020



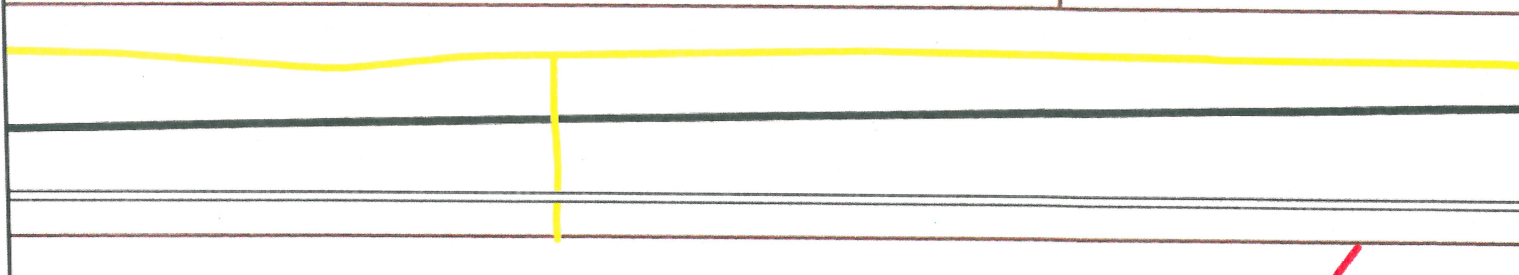
Start consistent slope at the east-side of the valve and retain that consistent slope to a point approximately forty (40) feet west of the tie-in with existing waterline in Ireland Lane. Each end of the pipe shall have at least minimum cover.

Ridge Lane Water Line - Locate Paint 3/27- 4/30/2009

- | | | |
|--------------------|--|-----------------------------------|
| ⊗ Proposed Hydrant | ~ BLACK - Possible Private Sewer Lines | ~ RED - Electric Power Lines |
| ⊕ Proposed Valve | ~ BLUE - Potable Water Lines | ~ ORANGE - Communication Lines |
| W Proposed Meter | ~ GREEN - Sewer or Storm Lines | ~ WHITE - Proposed New Water Main |
| | ~ YELLOW - Gas Lines | ⊕ Taxlots |

This product is for informational purposes and may not have been prepared for, or be suitable for legal, engineering, or surveying purposes. Users of this information should review or consult the primary data and information sources to ascertain the usability of the information.

Lines shown on this map are graphic representations of painted utility locations on the ground on the date(s) shown above. All positions are approximate and should be verified independently. This inventory may be incomplete. Gas lines (shown in yellow) may be paint locations or approximated from NW Natural maps or a combination of both.



Ridge Lane Water Line - Locate Paint 3/27- 4/30/2009

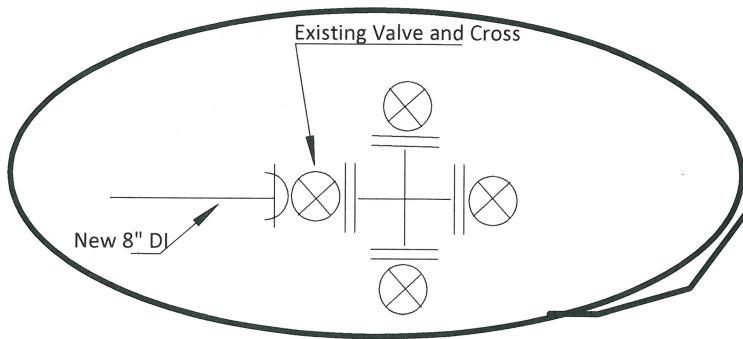
- | | | |
|--------------------|--|-----------------------------------|
| ⊗ Proposed Hydrant | ~ BLACK - Possible Private Sewer Lines | ~ RED - Electric Power Lines |
| ⊕ Proposed Valve | ~ BLUE - Potable Water Lines | ~ ORANGE - Communication Lines |
| ⊙ Proposed Meter | ~ GREEN - Sewer or Storm Lines | ~ WHITE - Proposed New Water Main |
| | ~ YELLOW - Gas Lines | ⊞ Taxlots |

This product is for informational purposes and may not have been prepared for, or be suitable for legal, engineering, or surveying purposes. Users of this information should review or consult the primary data and information sources to ascertain the usability of the information.



Lines shown on this map are graphic representations of painted utility locations on the ground on the date(s) shown above. All positions are approximate and should be verified independently. This inventory may be incomplete. Gas lines (shown in yellow) may be paint locations or approximated from NW Natural maps or a combination of both.

4090



Ridge Lane Water Line - Locate Paint 3/27- 4/30/2009

- | | | |
|--------------------|--|-----------------------------------|
| ⊗ Proposed Hydrant | ~ BLACK - Possible Private Sewer Lines | ~ RED - Electric Power Lines |
| ⊕ Proposed Valve | ~ BLUE - Potable Water Lines | ~ ORANGE - Communication Lines |
| Ⓜ Proposed Meter | ~ GREEN - Sewer or Storm Lines | ~ WHITE - Proposed New Water Main |
| | ~ YELLOW - Gas Lines | ⊕ Taxlots |

This product is for informational purposes and may not have been prepared for, or be suitable for legal, engineering, or surveying purposes. Users of this information should review or consult the primary data and information sources to ascertain the usability of the information.



Lines shown on this map are graphic representations of painted utility locations on the ground on the date(s) shown above. All positions are approximate and should be verified independently. This inventory may be incomplete. Gas lines (shown in yellow) may be paint locations or approximated from NW Natural maps or a combination of both.

Ridge Lane Water Line - Locate Paint 3/27- 4/30/2009



- Proposed Hydrant

Proposed Valve

Proposed Meter

Detail Page & Number
- BLACK - Possible Private Sewer Lines

BLUE - Potable Water Lines

GREEN - Sewer or Storm Lines

YELLOW - Gas Lines
- RED - Electric Power Lines

ORANGE - Communication Lines

WHITE - Proposed New Water Main

Taxlots

This product is for informational purposes and may not have been prepared for, or be suitable for legal, engineering, or surveying purposes. Users of this information should review or consult the primary data and information sources to ascertain the usability of the information



Lines shown on this map are graphic representations of painted utility locations on the ground on the date(s) shown above. All positions are approximate and should be verified independently. This inventory may be incomplete. Gas lines (shown in yellow) may be paint locations or approximated from NW Natural maps or a combination of both.

Air Photo Date: August 2007

Taxlot base source: Metro RLIS

1 inch approximately 50 feet

water_locates_RidgeLane20090714.mxd AHA 7/14/2009

3940 1

2

3

4

1470

1480

1490

3950

4020

4090

RIDGE LANE

IRELAND LANE

Private 4 inch "plastic" sewer lateral from 4020 Ridge Ln to ss manhole in Ireland Ln
Location in the Ridge Ln ROW is unknown

Private sewer lateral from 4960 Ireland Ln to ss pipe in Ireland Ln
Location in the Ridge Ln ROW is unknown

4027

4025

4960