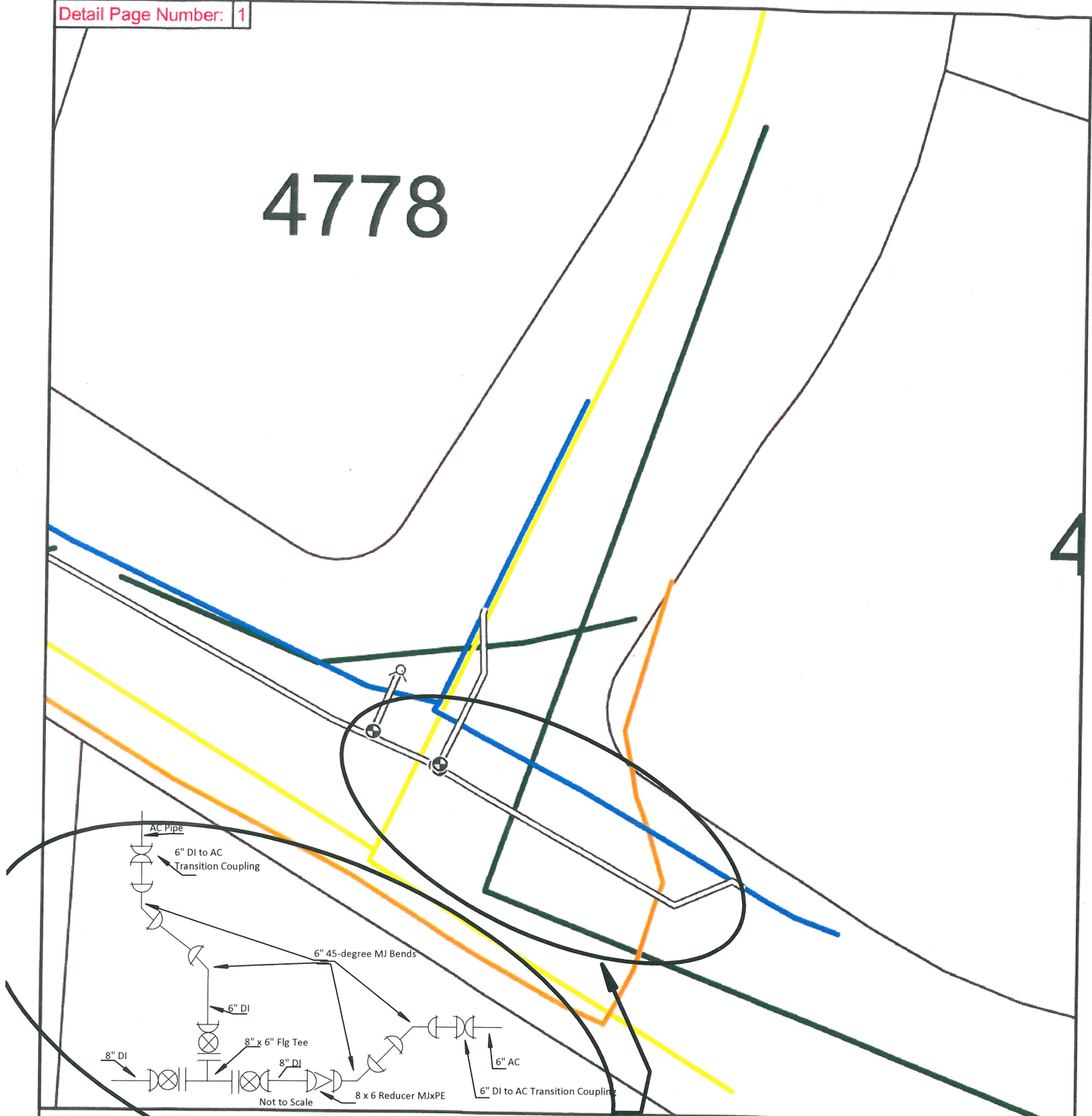


4778



Elmran Drive Water Line - Locate Paint 4/30 - 5/26/2009



- ⊗ Proposed Hydrant
- ⊕ Proposed Valve
- ⊙ Proposed Meter
- ~ BLACK - Possible Private Sewer Lines
- ~ BLUE - Potable Water Lines
- ~ GREEN - Sewer or Storm Lines
- ~ YELLOW - Gas Lines
- ~ RED - Electric Power Lines
- ~ ORANGE - Communication Lines
- ~ WHITE - Proposed New Water Main
- ⊞ Taxlots

This product is for informational purposes and may not have been prepared for, or be suitable for legal, engineering, or surveying purposes. Users of this information should review or consult the primary data and information sources to ascertain the usability of the information.














Lines shown on this map are graphic representations of painted utility locations on the ground on the date(s) shown above. All positions are approximate and should be verified independently. This inventory may be incomplete. Gas lines (shown in yellow) may be paint locations or approximated from NW Natural maps or a combination of both.

3901

Elmran Drive Water Line - Locate Paint 4/30 - 5/26/2009

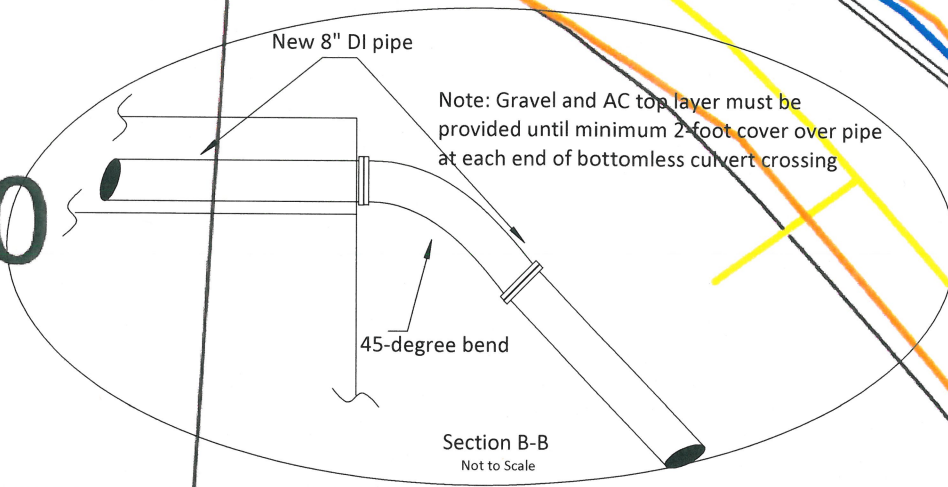
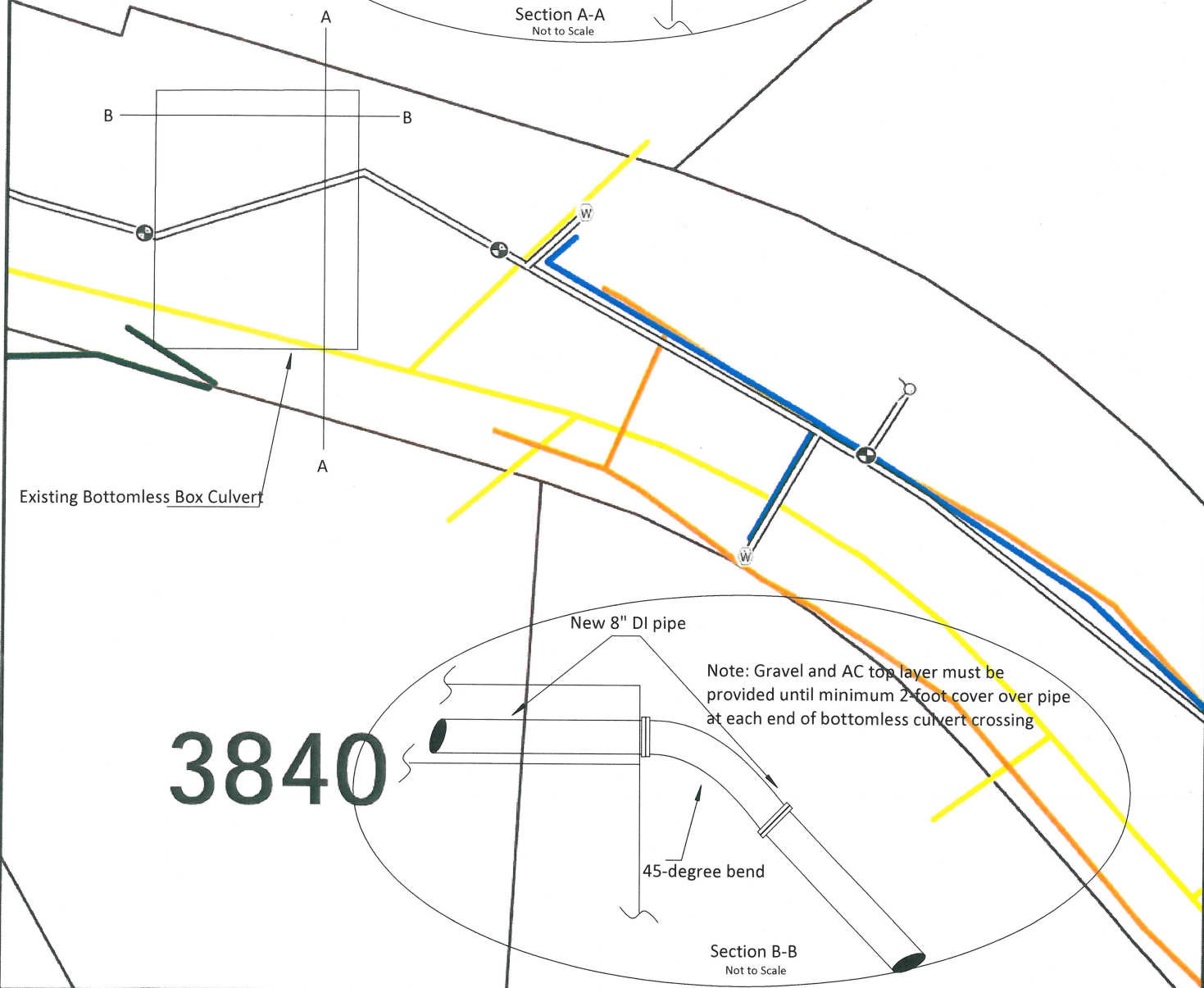
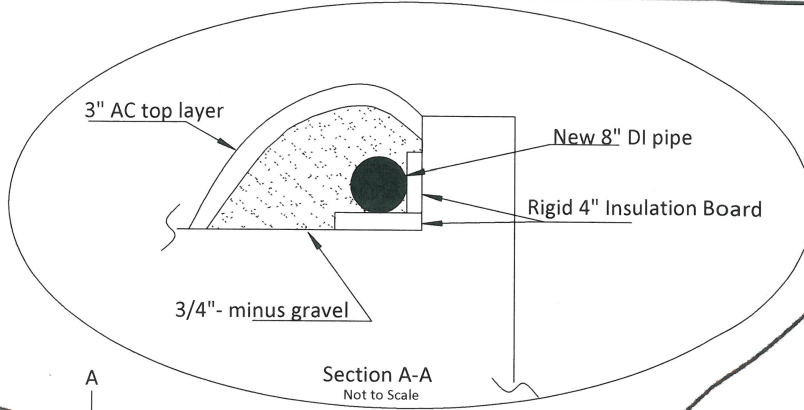


-  Proposed Hydrant
-  Proposed Valve
-  Proposed Meter
-  BLACK - Possible Private Sewer Lines
-  BLUE - Potable Water Lines
-  GREEN - Sewer or Storm Lines
-  YELLOW - Gas Lines
-  RED - Electric Power Lines
-  ORANGE - Communication Lines
-  WHITE - Proposed New Water Main
-  Taxlots

This product is for informational purposes and may not have been prepared for, or be suitable for legal, engineering, or surveying purposes. Users of this information should review or consult the primary data and information sources to ascertain the usability of the information



Lines shown on this map are graphic representations of painted utility locations on the ground on the date(s) shown above. All positions are approximate and should be verified independently. This inventory may be incomplete. Gas lines (shown in yellow) may be paint locations or approximated from NW Natural maps or a combination of both.



Elmran Drive Water Line - Locate Paint 4/30 - 5/26/2009



- Proposed Hydrant
- Proposed Valve
- Proposed Meter
- BLACK - Possible Private Sewer Lines
- BLUE - Potable Water Lines
- GREEN - Sewer or Storm Lines
- YELLOW - Gas Lines
- RED - Electric Power Lines
- ORANGE - Communication Lines
- WHITE - Proposed New Water Main
- Taxlots

This product is for informational purposes and may not have been prepared for, or be suitable for legal, engineering, or surveying purposes. Users of this information should review or consult the primary data and information sources to ascertain the usability of the information



Lines shown on this map are graphic representations of painted utility locations on the ground on the date(s) shown above. All positions are approximate and should be verified independently. This inventory may be incomplete. Gas lines (shown in yellow) may be paint locations or approximated from NW Natural maps or a combination of both.



Elmrans Drive Water Line - Locate Paint 4/30 - 5/26/2009

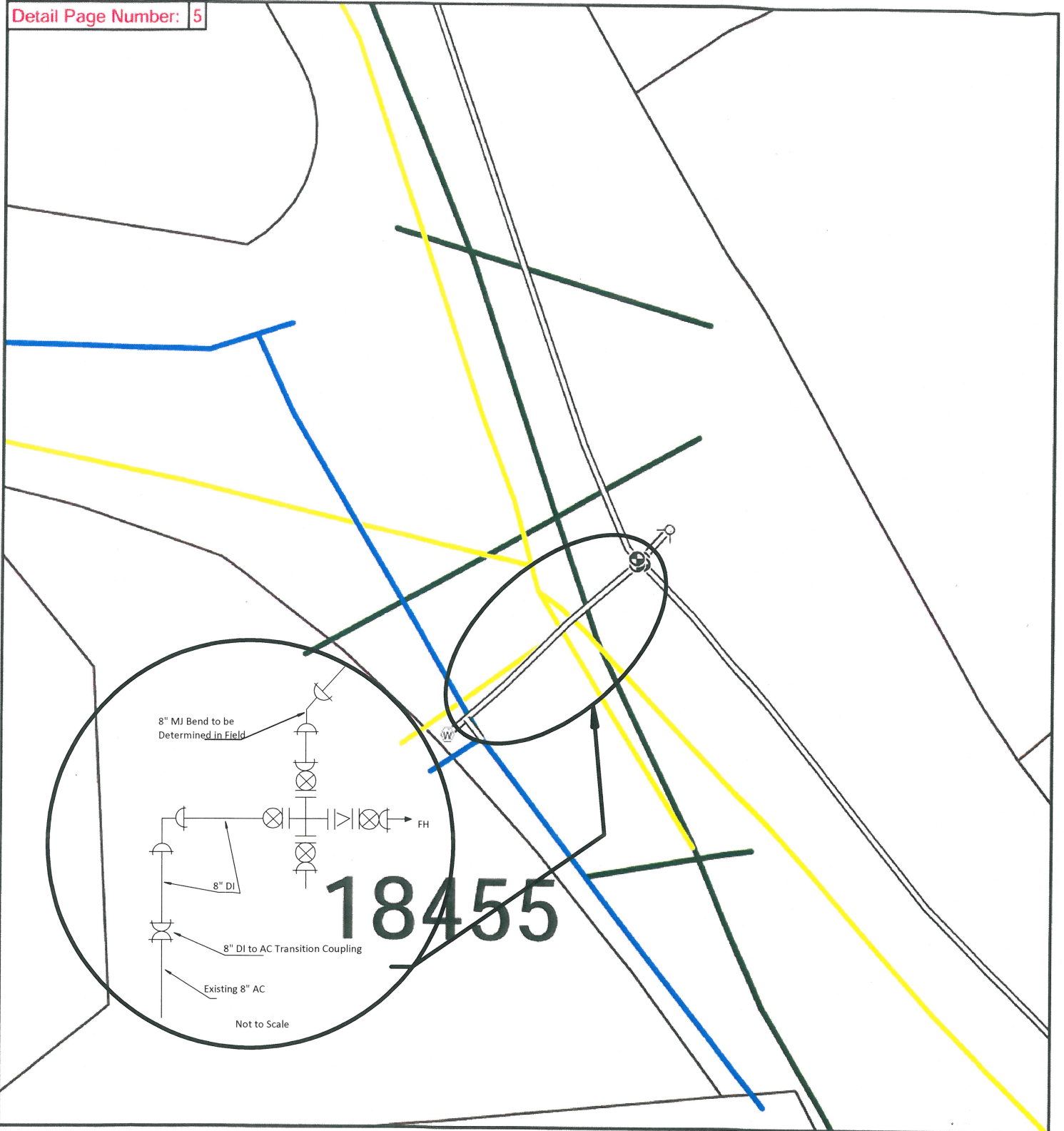


- | | | |
|--------------------|--|-----------------------------------|
| ⊕ Proposed Hydrant | ~ BLACK - Possible Private Sewer Lines | ~ RED - Electric Power Lines |
| ⊕ Proposed Valve | ~ BLUE - Potable Water Lines | ~ ORANGE - Communication Lines |
| ⊕ Proposed Meter | ~ GREEN - Sewer or Storm Lines | ~ WHITE - Proposed New Water Main |
| | ~ YELLOW - Gas Lines | ⊕ Taxlots |

This product is for informational purposes and may not have been prepared for, or be suitable for legal, engineering, or surveying purposes. Users of this information should review or consult the primary data and information sources to ascertain the usability of the information



Lines shown on this map are graphic representations of painted utility locations on the ground on the date(s) shown above. All positions are approximate and should be verified independently. This inventory may be incomplete. Gas lines (shown in yellow) may be paint locations or approximated from NW Natural maps or a combination of both.



Elmran Drive Water Line - Locate Paint 4/30 - 5/26/2009



- Proposed Hydrant
 BLACK - Possible Private Sewer Lines
 RED - Electric Power Lines
- Proposed Valve
 BLUE - Potable Water Lines
 ORANGE - Communication Lines
- Proposed Meter
 GREEN - Sewer or Storm Lines
 WHITE - Proposed New Water Main
- YELLOW - Gas Lines
 Taxlots

This product is for informational purposes and may not have been prepared for, or be suitable for legal, engineering, or surveying purposes. Users of this information should review or consult the primary data and information sources to ascertain the usability of the information.



Lines shown on this map are graphic representations of painted utility locations on the ground on the date(s) shown above. All positions are approximate and should be verified independently. This inventory may be incomplete. Gas lines (shown in yellow) may be paint locations or approximated from NW Natural maps or a combination of both.

19250

Elmran Drive Water Line - Locate Paint 4/30 - 5/26/2009

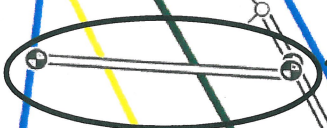
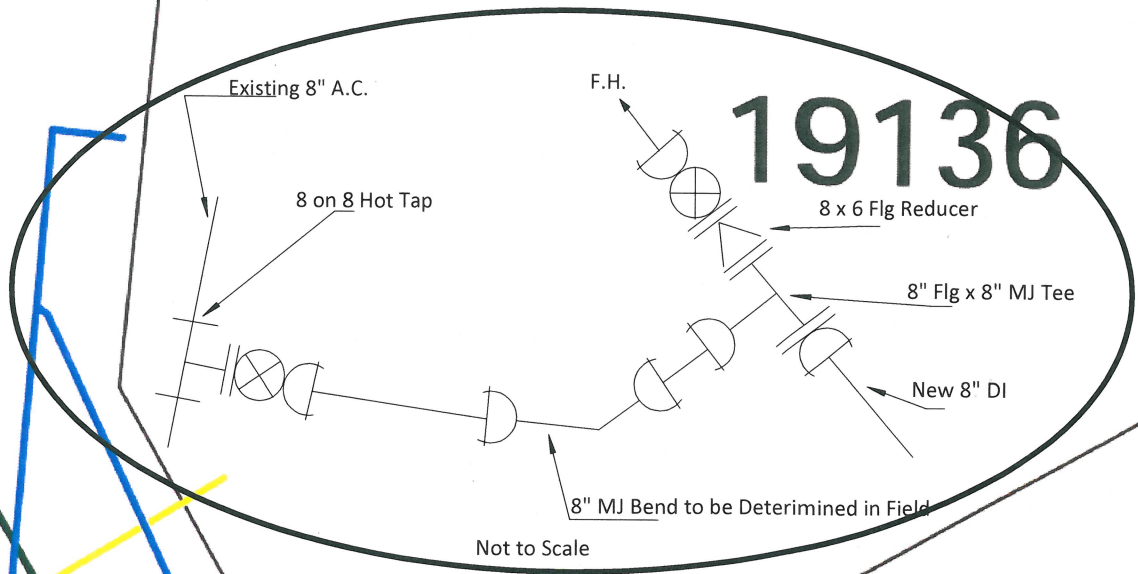


- ⊕ Proposed Hydrant
- ⊕ Proposed Valve
- Ⓜ Proposed Meter
- ~ BLACK - Possible Private Sewer Lines
- ~ BLUE - Potable Water Lines
- ~ GREEN - Sewer or Storm Lines
- ~ YELLOW - Gas Lines
- ~ RED - Electric Power Lines
- ~ ORANGE - Communication Lines
- ~ WHITE - Proposed New Water Main
- ⊞ Taxlots

This product is for informational purposes and may not have been prepared for, or be suitable for legal, engineering, or surveying purposes. Users of this information should review or consult the primary data and information sources to ascertain the usability of the information



Lines shown on this map are graphic representations of painted utility locations on the ground on the date(s) shown above. All positions are approximate and should be verified independently. This inventory may be incomplete. Gas lines (shown in yellow) may be paint locations or approximated from NW Natural maps or a combination of both.



Elmran Drive Water Line - Locate Paint 4/30 - 5/26/2009



- Proposed Hydrant
- Proposed Valve
- Proposed Meter
- BLACK - Possible Private Sewer Lines
- BLUE - Potable Water Lines
- GREEN - Sewer or Storm Lines
- YELLOW - Gas Lines
- RED - Electric Power Lines
- ORANGE - Communication Lines
- WHITE - Proposed New Water Main
- Taxlots

This product is for informational purposes and may not have been prepared for, or be suitable for legal, engineering, or surveying purposes. Users of this information should review or consult the primary data and information sources to ascertain the usability of the information.



Lines shown on this map are graphic representations of painted utility locations on the ground on the date(s) shown above. All positions are approximate and should be verified independently. This inventory may be incomplete. Gas lines (shown in yellow) may be paint locations or approximated from NW Natural maps or a combination of both.

Elmran Drive Water Line - Locate Paint 4/30 - 5/26/2009



- Proposed Hydrant
- Proposed Valve
- Proposed Meter
- Detail Page & Number
- BLACK - Possible Private Sewer Lines
- BLUE - Potable Water Lines
- GREEN - Sewer or Storm Lines
- YELLOW - Gas Lines
- RED - Electric Power Lines
- ORANGE - Communication Lines
- WHITE - Proposed New Water Main
- Taxlots

This product is for informational purposes and may not have been prepared for, or be suitable for legal, engineering, or surveying purposes. Users of this information should review or consult the primary data and information sources to ascertain the usability of the information.



Lines shown on this map are graphic representations of painted utility locations on the ground on the date(s) shown above. All positions are approximate and should be verified independently. This inventory may be incomplete. Gas lines (shown in yellow) may be paint locations or approximated from NW Natural maps or a combination of both.

Air Photo Date: August 2007 Taxlot base source: Metro RLIS 1 inch approximately 100 feet water_locates_Elmran_20090507.mxd PA 6/3/2009

