

1 LANDSCAPE PLAN
LS1 1" = 20' - 0"



EXISTING SHRUB #1



NEW TREE TYPE TO MATCH EXISTING
EXISTING SHRUB #1
EXISTING SHRUB #2
EXISTING GROUND COVER



EXISTING GROUND COVER

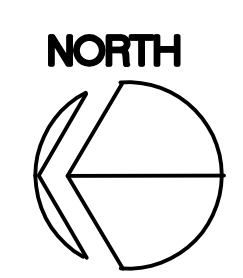
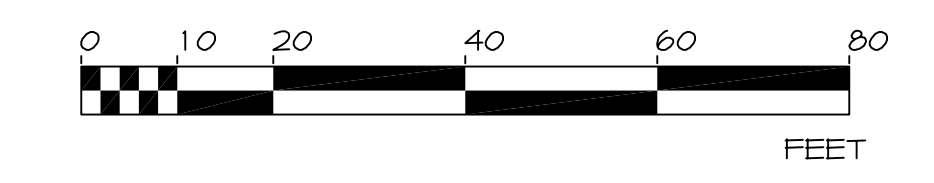
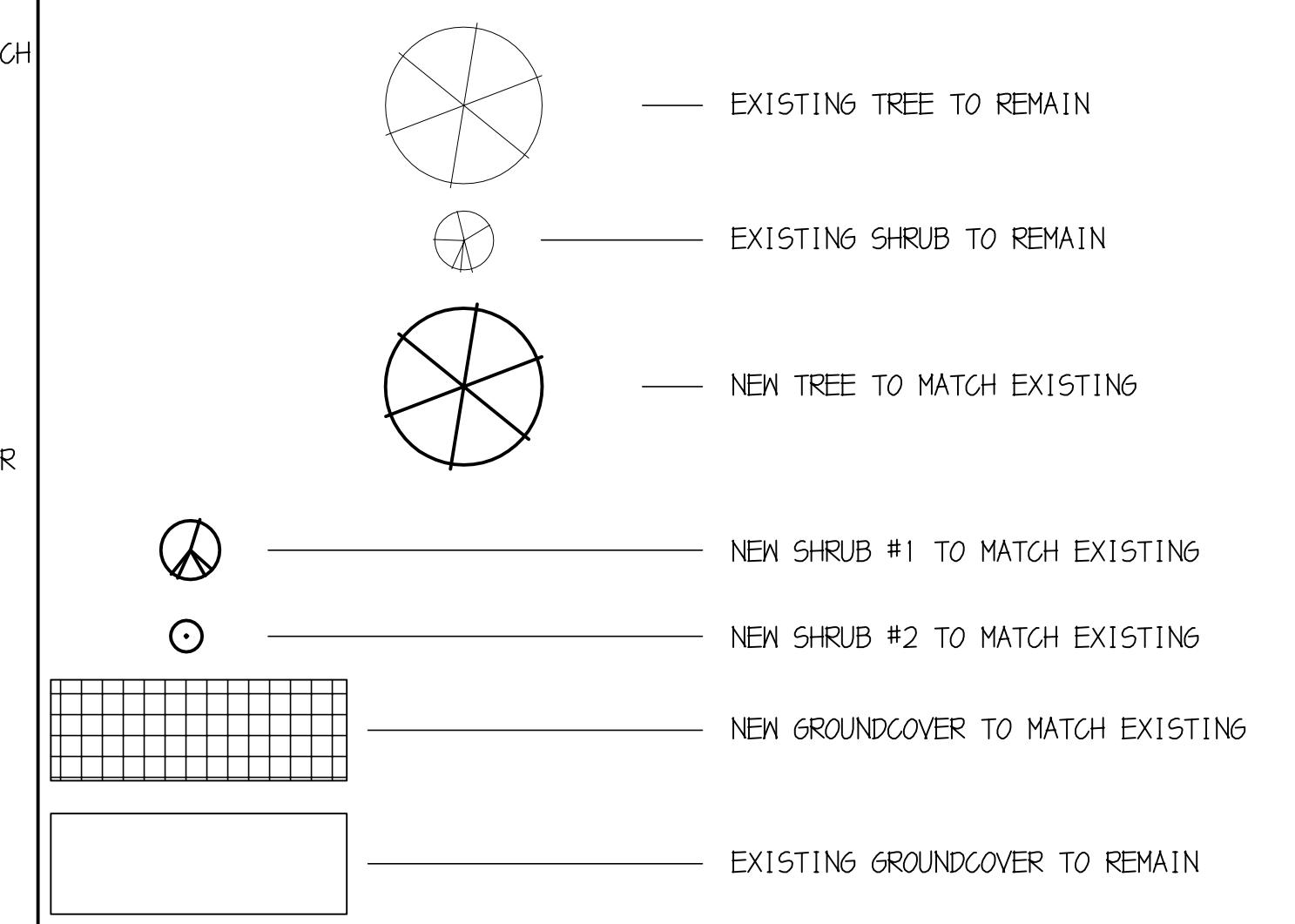
LANDSCAPE NOTES

1. DETERMINE ALL ABOVE AND UNDERGROUND UTILITIES BEFORE COMMENCING WORK. ALL WORK IS TO BE COMPLETED TO AVOID ANY DAMAGE. THIS IS THE RESPONSIBILITY OF THE CONTRACTOR.
2. ALL EXISTING VEGETATION AREAS TO RECEIVE NEW LANDSCAPE SHALL BE CLEARED AND GRUBBED FROM THE SITE PRIOR TO COMMENCEMENT OF LANDSCAPE WORK.
3. SUBGRADES FOR ALL PLANTING BED AREAS SHALL BE MINIMUM 6" BELOW FINISH ELEVATION. ALL PLANTING BEDS TO HAVE POSITIVE DRAINAGE, MIN. 3%.
4. PLANTING BEDS TO HAVE MIN. 6" THREE WAY TOPSOIL. 12" AT AREAS WITH TREES. DEPTH OF SOIL IS DETERMINED AFTER SETTLING HAS OCCURRED. ALL PLANTING BEDS TO BE NON-COMPACTED TO A DEPTH OF 18" PRIOR TO PLANTING. PLANTING BEDS TO HAVE MORE SOIL IF NECESSARY TO BE FLUSH WITH CURB, SIDEWALK OR OTHER PAVED SURFACE.
5. EXISTING CLAY OR SANDY SOILS SHALL BE AUGMENTED WITH ORGANIC SUPPLEMENTS.
6. CONTRACTOR TO VERIFY PLANT QUANTITIES AND SQUARE FOOTAGE.
7. ALL PLANT MATERIAL TO BE WELL BRANCHED FREE FROM DISEASE OR PEST AND HAVE A WELL DEVELOPED ROOT SYSTEM. ALL MATERIAL TO MEET AMERICAN ASSOCIATION OF NURSERYMEN STANDARDS.
8. FERTILIZE ALL PLANT MATERIAL WITH SLOW RELEASE FERTILIZER PER MANUFACTURER'S RATES.
9. PLANT MATERIAL PLANTED TO BE SAME AS OR NO MORE THAN 1' HIGHER THAN CURRENT GROWTH RATE AT FINISH GRADE.
10. WATER PLANTS THOROUGHLY DURING PLANTING AND IMMEDIATELY FOLLOWING. WATER HEAVILY AT FIRST, 3 TIMES A WEEK AND LESS ONCE ESTABLISHED.
11. ORGANIC MEDIUM MULCH TO BE A MINIMUM OF 3" DEPTH IN ALL PLANTING BEDS, 2" AT GROUNDCOVERS.
12. FOR SOD WATERING, FERTILIZING AND MOWING, FOLLOW MANUFACTURER'S INSTRUCTIONS.
13. INSTALL SOD (NO NET) PER MANUFACTURER'S INSTRUCTIONS.
14. AT GRASS, 4" MINIMUM TOPSOIL ROTOTILLED TO A DEPTH OF 6" WITH AMENDMENTS. RAKE AND ROLL.
15. PROTECT ADJACENT AREAS DURING ESTABLISHMENT.
16. ALL LAWN TO BE EDGED CLEANLY AND GRASS TO BE ONLY IN DESIGNATED AREAS.
17. IRRIGATION TO BE DESIGN/BUILD BY CONTRACTOR.
18. IRRIGATION IS TO CONFORM TO CITY OF WEST LINN STANDARDS OR ANY PREVAILING CODES.

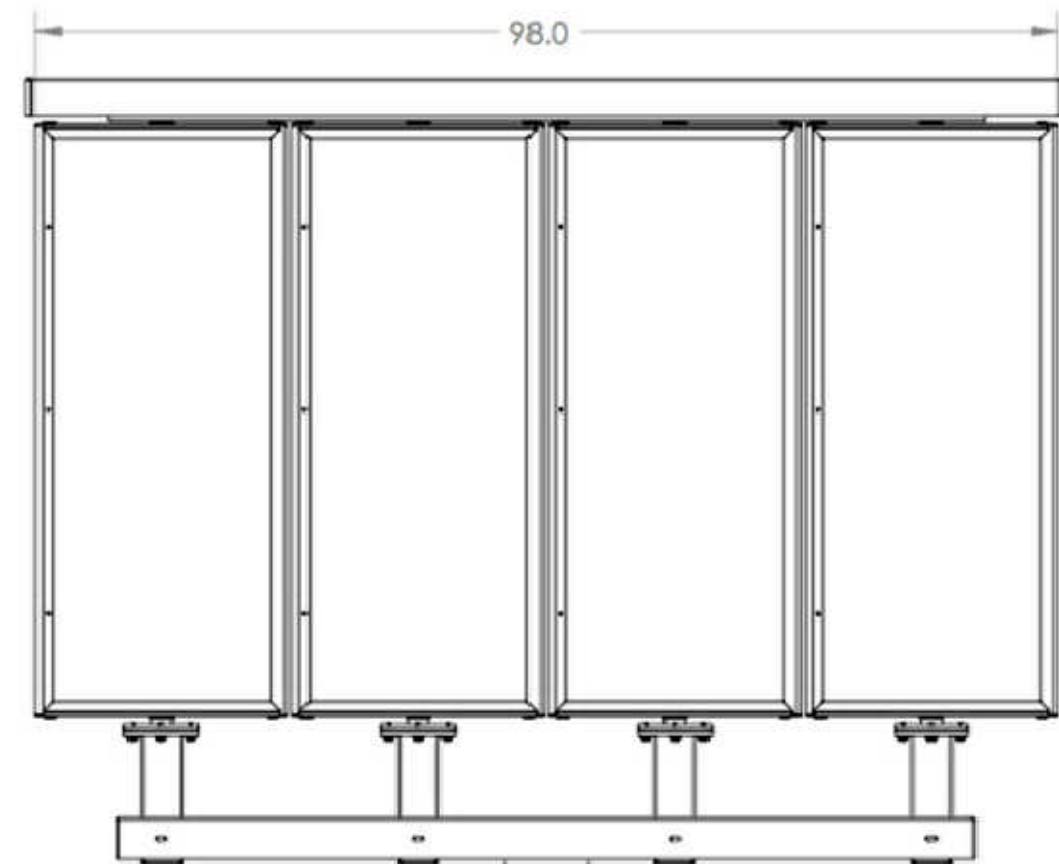
SITE DATA

SITE AREA: 33,050 SF (0.75 ACRES)
LANDSCAPING:
EXISTING LANDSCAPE AREA: 1,365 SF
PROPOSED LANDSCAPING AREA: 1,615 SF

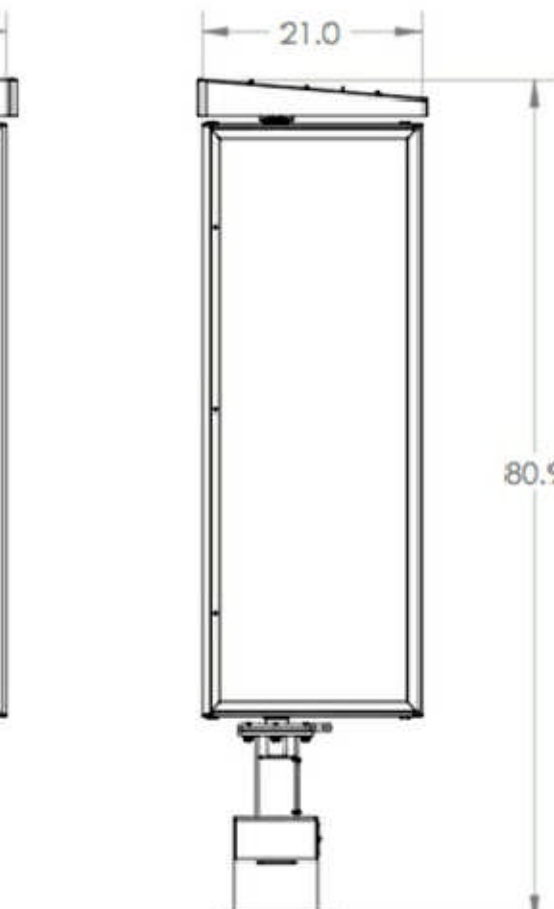
PLANT SCHEDULE



		Stantec Architecture Inc. 12034 134th Court NE, Suite 102 Richmond, WA 98052 Tel: 425.248.1000 Fax: 425.248.1014 www.stantec.com	
PREPARED FOR: M. McDonald's USA, LLC <small>These drawings and specifications are the confidential and proprietary information of McDonald's USA, LLC. They are prepared for use on this specific site in conjunction with its issue date and are not suitable for use on a different site or at another project without the express written consent of the architect and engineers. Reproduction of the contract documents for use on another project is strictly prohibited.</small>	PROJECT ADDRESS: 2100 8TH COURT WEST LINN, OR 97068	PROJECT CAD FILE: 2007040200	STATE SITE CODE: 086-0182
PRELIMINARY PLANNING PERMIT BID CONSTRUCTION	DATE 9/29/13	DRAWING TITLE: LANDSCAPE PLAN	SHEET NO. LS1
PLOTTED: 11/11/13 PLOT SCALE: 1" = 20'		REVISIONS:	
REV	DATE	DESCRIPTION	BY
1	5/9/12	PLANNING COMMENTS	JL



Main Menu Board
OPO4-MTR: Front View



OPO4-MTR: Side View

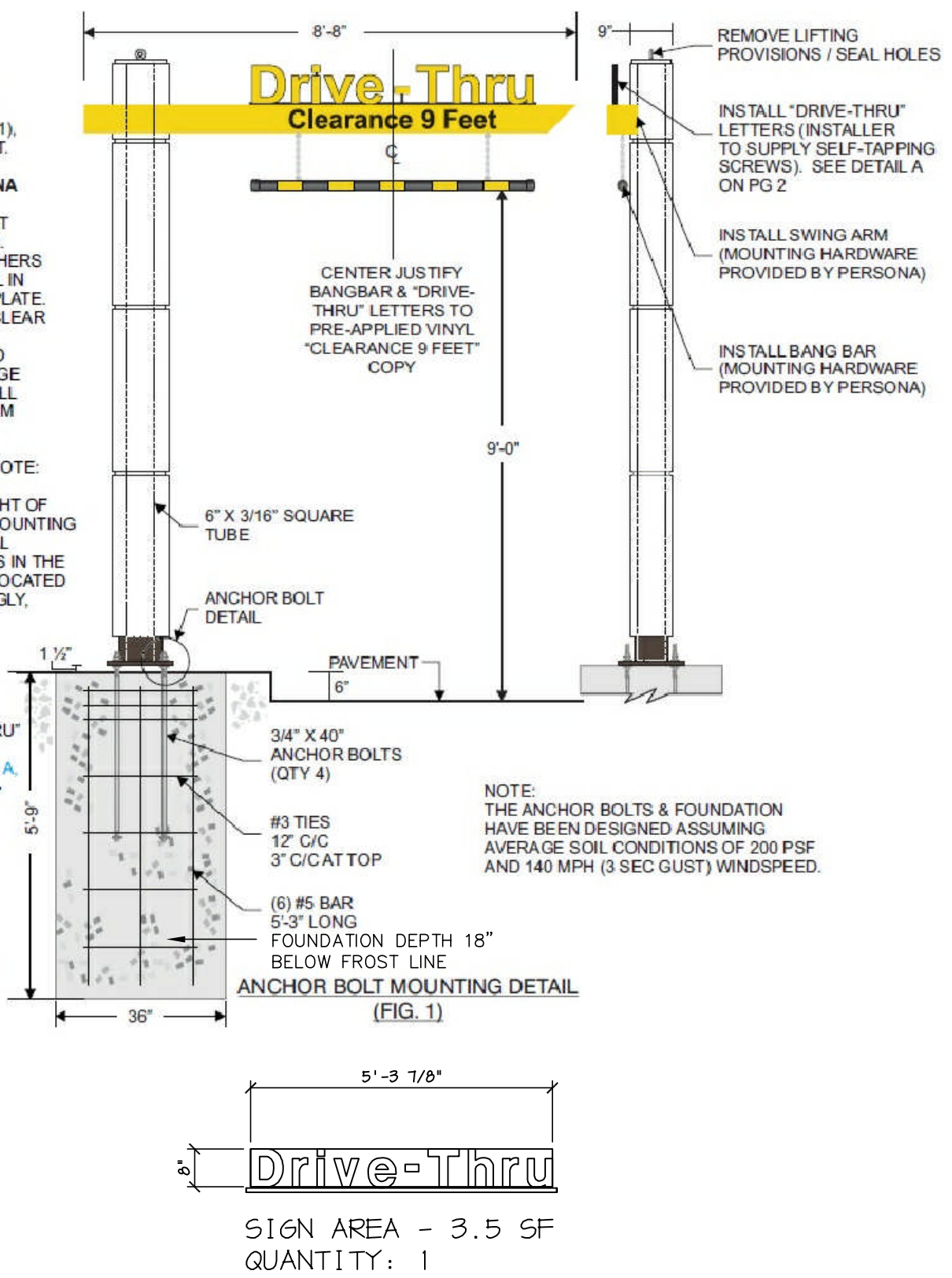
VIEWABLE AREA: 31.1 SF

3 OPO MENU BOARD
SD1 NOT TO SCALE

FOR REFERENCE ONLY
VERIFY W/ SIGN VENDOR

SINGLE ARM GATEWAY INSTALLATION INSTRUCTIONS:

- GENERAL CONTRACTOR TO STAKE SIGN LOCATION(S). ESTABLISH FINAL GRADE REQUIREMENTS AND DETERMINE THE SIGN ORIENTATION ON THE PROPERTY PRIOR TO EXCAVATION.
- GENERAL CONTRACTOR TO EXCAVATE GATEWAY FOUNDATIONS (SEE FIG. 1) AND SET ANCHOR BOLTS PER TEMPLATE INCLUDED WITH PLATE & BOLT KIT. POUR CONCRETE AND ALLOW TO CURE FOR 7 DAYS.
- UNCRATE AND INSPECT ALL SIGN DISPLAY COMPONENTS. NOTIFY PERSONA OF ANY DAMAGE.
- PLACE LEVELING NUTS & WASHERS ON ANCHOR BOLTS (SEE ANCHOR BOLT DETAIL ON PG 2) AND LEVEL TEMPORARILY FOR FINAL ADJUSTMENT LATER.
- LIFT VERTICAL COLUMN STRUCTURE OVER ANCHOR BOLTS. INSTALL WASHERS AND NUTS OVER ANCHOR BOLTS. DOUBLE CHECK AND ADJUST FOR LEVEL IN ALL DIRECTIONS USING LEVELING NUTS. TIGHTEN ALL NUTS OVER BASE PLATE.
- REMOVE LIFTING PROVISIONS FROM TOP OF COLUMN. FILL HOLES WITH CLEAR SILICONE TO ENSURE A WATER TIGHT SEAL.
- REMOVE ACCESS COVER FROM TOP OF BREAK-AWAY CLEARANCE ARM TO EXPOSE HINGED MOUNTING LOCATION. ATTACHMENT HARDWARE PACKAGE FOUND INSIDE ACCESS COVER FOR HINGE & PVC BANG BAR. INSTALL SMALL EYEBOLTS (PROVIDED) INTO HOLES FLUSH TO BOTTOM SKIN OF SWING ARM (NUTS ARE WELDED ON INSIDE SKIN TO RECEIVE EYEBOLTS). INSTALL "S" HOOKS INTO SMALL EYEBOLTS & PINCH TOP HOOK SHUT.
- HOIST ARM INTO POSITION USING STRAPS, SCISSOR LIFT OR MANUALLY (NOTE: MINIMUM OF TWO PEOPLE NECESSARY TO ATTACH ARM).
- LINE UP ARM WITH VERTICAL COLUMN MOUNTING HOLES. SUPPORT WEIGHT OF ARM WHILE ATTACHING BOLTS UNTIL ARM HAS BEEN LEVELED AND ALL 5 MOUNTING BOLTS ARE FIRMLY TIGHTENED AGAINST STRUCTURAL TUBE. IF ADDITIONAL ADJUSTMENTS ARE NECESSARY TO LEVEL THE ARM, LOOSEN THE 5 BOLTS IN THE VERTICAL STRUCTURAL TUBE & THE 5 BOLTS IN THE HINGE MECHANISM (LOCATED INSIDE THE ARM ACCESS COVER). CHECK FOR LEVEL, ADJUST ACCORDINGLY, AND FIRMLY TIGHT ALL BOLTS.
- CHECK ARM MOTION AND SPRING TENSION BY ROTATING THE ARM AND LOOKING FOR SMOOTH ARM OPERATION. SIMULATE MOTION BY ROTATING ARM APPROXIMATELY 2-3 FEET AND RELEASING IT TO RETURN BACK TO ITS STATIONARY POSITION AGAINST COLUMN. ADJUST TENSION BOLTS, IF NECESSARY.
- RE-INSTALL ACCESS COVER TO TOP OF SWING ARM. POSITION "DRIVE-THRU" LETTERS CENTER JUSTIFIED OVER THE VINYL "CLEARANCE 9 FEET" COPY. PRE-APPLIED TO SWING ARM, AND 1 1/2" FROM FRONT OF ARM (SEE DETAIL A, FIG. 1). INSTALL LETTERS ON TOP OF ARM USING 1/4" X 20 X 1 1/2" LONG NON-CORROSIVE BOLTS (BOLTS TO BE PROVIDED BY INSTALLER).
- RETRIEVE PVC BANGBAR & CHECK FOR DAMAGE. INSTALL SMALL EYEBOLTS FROM HARDWARE PACKAGE THROUGH HOLES PROVIDED IN BANG BAR. MOUNT THE "S" HOOKS INTO EYEBOLTS. MOUNT CHAIN AND PINCH "S" HOOKS INTO EYEBOLTS. MEASURE FOR 9'-0" CLEARANCE TO PAVEMENT & TRIM EXCESS CHAIN. BANG BAR SHOULD ALSO BE CENTER JUSTIFIED OVER A "CLEARANCE 9 FEET" COPY. ENSURE ALL "S" HOOKS ARE PINCHED SHUT.
- TOUCH UP ANY PAINT ON SIGN, BOLTS OR STRUCTURE AS REQUIRED.
- CLEAN AREA. REMOVE EXCESS SOIL & DISCARD INSTALLATION DEBRIS OFF-PREMISE.

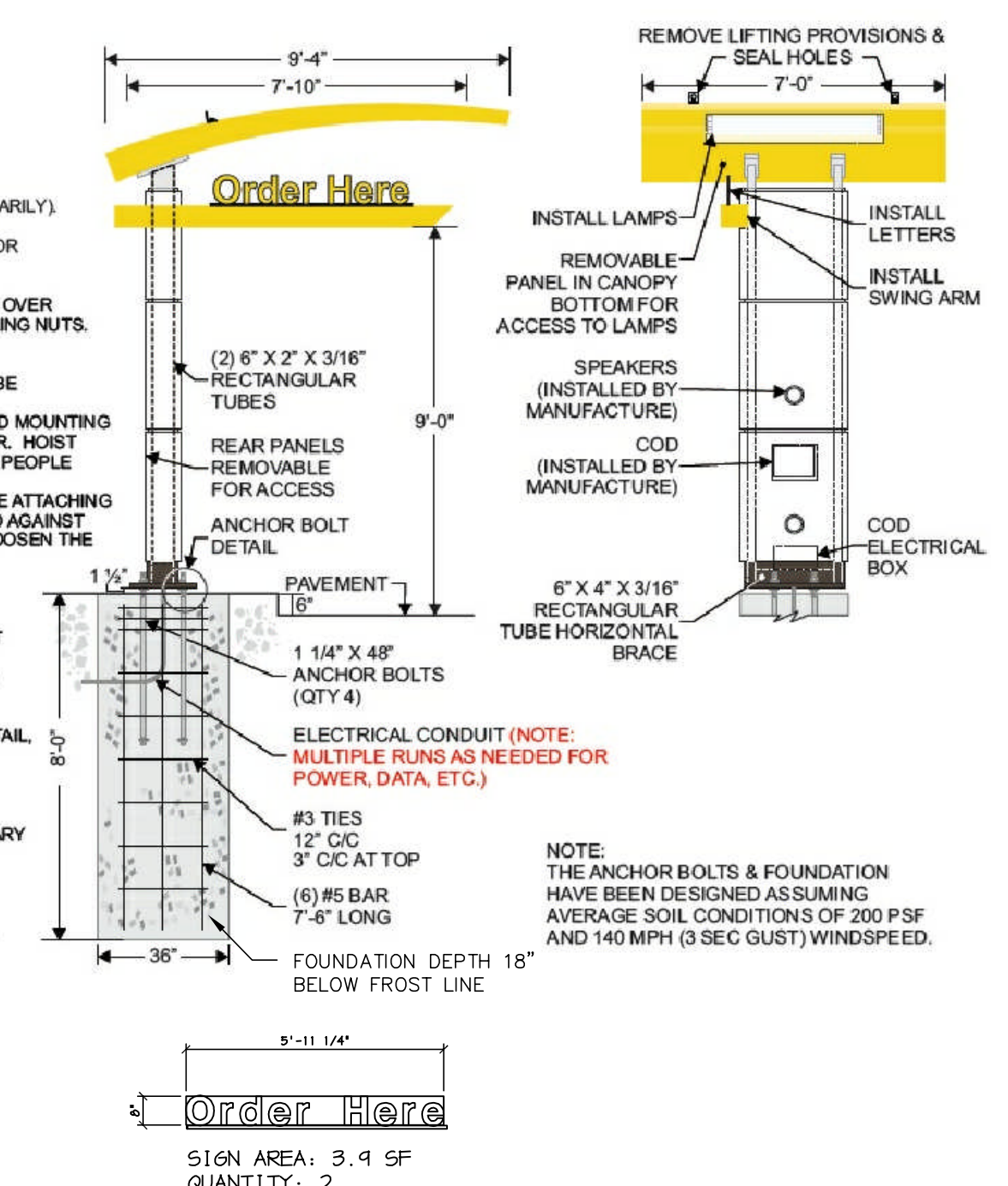


1 DRIVE-THRU GATEWAY (SINGLE)
SD1 NOT TO SCALE

FOR REFERENCE ONLY
VERIFY W/ SIGN VENDOR

ORDER HERE CANOPY INSTALLATION INSTRUCTIONS:

- GENERAL CONTRACTOR TO STAKE SIGN LOCATION(S). ESTABLISH FINAL GRADE REQUIREMENTS AND DETERMINE THE SIGN ORIENTATION ON THE PROPERTY PRIOR TO EXCAVATION.
- GENERAL CONTRACTOR TO EXCAVATE CANOPY FOUNDATIONS (SEE FIG. 1) AND SET ANCHOR BOLTS PER TEMPLATE INCLUDED WITH PLATE & BOLT KIT. POUR CONCRETE AND ALLOW TO CURE FOR 7 DAYS.
- UNCRATE AND INSPECT ALL SIGN DISPLAY COMPONENTS. NOTIFY PERSONA OF ANY DAMAGE.
- PLACE LEVELING NUTS & PLATE WASHERS ON ANCHOR BOLTS (SEE ANCHOR BOLT DETAIL ON PG 2) AND LEVEL TEMPORARILY FOR FINAL ADJUSTMENT LATER.
- REMOVE BACK SERVICE PANEL ON BOTTOM SECTION OF POLE COVER. REMOVE COO (CONFIRMATION ORDER DISPLAY) ELECTRICAL BOX COVER TO ACCESS ELECTRICAL BOX MOUNTING SCREWS. REMOVE MOUNTING SCREWS & THE COO ELECTRICAL BOX (TEMPORARILY). TRIM THE ELECTRICAL CONDUIT PROVIDED IN THE FOUNDATION TO A LENGTH THAT DOES NOT INTERFERE WITH THE LOCATION OF THE COO ELECTRICAL BOX IN THE SIGN DISPLAY, OR INTERFERE WITH ROUTING THE WIRES INTO THE 2X4 PRIMARY POWER JUNCTION BOX. (SEE PROFILE SKETCH).
- LIFT VERTICAL COLUMN STRUCTURE OVER ANCHOR BOLTS. INSTALL WASHERS AND NUTS OVER ANCHOR BOLTS. DOUBLE CHECK AND ADJUST FOR LEVEL IN ALL DIRECTIONS USING LEVELING NUTS. TIGHTEN ALL NUTS ABOVE BASE PLATE. REMOVE LIFTING PROVISIONS FROM COLUMN.
- PULL PRIMARY ELECTRICAL WIRES INTO JUNCTION BOX. ENSURE WIRES ARE LABELED ACCORDINGLY. RE-INSTALL COO ELECTRICAL BOX & COVER. NOTE: COO & SPEAKERS TO BE INSTALLED BY OTHERS AT A LATER DATE.
- REMOVE ACCESS COVER FROM TOP OF BREAK-AWAY CLEARANCE ARM TO EXPOSE HINGED MOUNTING LOCATION. ATTACHMENT HARDWARE PACKAGE CAN BE FOUND INSIDE ARM ACCESS COVER. HOIST ARM INTO POSITION USING STRAPS, SCISSOR LIFT OR MANUALLY (NOTE: MINIMUM OF TWO PEOPLE NECESSARY TO ATTACH ARM).
- LINE UP ARM WITH VERTICAL COLUMN MOUNTING HOLES. SUPPORT WEIGHT OF ARM WHILE ATTACHING BOLTS UNTIL ARM HAS BEEN LEVELED AND ALL 5 MOUNTING BOLTS ARE FIRMLY TIGHTENED AGAINST STRUCTURAL TUBE. IF ADDITIONAL ADJUSTMENTS ARE NECESSARY TO LEVEL THE ARM, LOOSEN THE 5 BOLTS IN THE VERTICAL STRUCTURAL TUBE & THE 5 BOLTS IN THE HINGE MECHANISM (LOCATED INSIDE THE ARM ACCESS COVER). CHECK FOR LEVEL, ADJUST ACCORDINGLY, AND FIRMLY TIGHT ALL BOLTS.
- CHECK ARM MOTION AND SPRING TENSION BY ROTATING THE ARM AND LOOKING FOR SMOOTH ARM OPERATION. SIMULATE MOTION BY ROTATING ARM APPROXIMATELY 2-3 FEET AND RELEASING IT TO RETURN BACK TO ITS STATIONARY POSITION AGAINST COLUMN. ADJUST TENSION BOLTS, IF NECESSARY. ALSO CHECK FOR 9'-0" CLEARANCE HEIGHT FROM BOTTOM OF SWING ARM TO PAVEMENT.
- RE-INSTALL ACCESS COVER TO TOP OF SWING ARM. POSITION "ORDER HERE" LETTERS 1/8" FROM RIGHT ARM EDGE, AND 1 1/2" FROM FRONT OF ARM (SEE LETTER POSITIONING DETAIL, PG 2). INSTALL LETTERS ON TOP OF ARM USING 1/4" X 20 X 1 1/2" LONG NON-CORROSIVE BOLTS (BOLTS TO BE PROVIDED BY INSTALLER).
- LIFT CANOPY ROOF ABOVE COLUMN INCLUDING ASSEMBLY. DROP ELECTRICAL WIRES THROUGH COLUMN AND SECURE CANOPY TO TOP OF COLUMN WITH SUPPLIED BOLTS. INSTALLER TO PROVIDE AND MOUNT JUNCTION BOX & COVER AT BASE OF TUBE FOR PRIMARY CONNECTIONS.
- INSTALL (6) FLUORESCENT LAMPS (PACKAGED SEPARATELY) INTO CANOPY FIXTURES. IF LICENSED TO DO SO, MAKE FINAL ELECTRICAL CONNECTIONS TO PRIMARY POWER. TEST FIRE FOR ILLUMINATION.
- REMOVE LIFTING PROVISIONS FROM TOP OF CANOPY. SEAL HOLES WITH CLEAR SILICONE TO ENSURE A WATER TIGHT SEAL.
- TOUCH UP ANY PAINT ON SIGN, BOLTS OR STRUCTURE AS REQUIRED.
- CLEAN AREA. REMOVE EXCESS SOIL & DISCARD INSTALLATION DEBRIS OFF-PREMISE.



2 DRIVE-THRU CANOPY
SD1 NOT TO SCALE

FOR REFERENCE ONLY
VERIFY W/ SIGN VENDOR

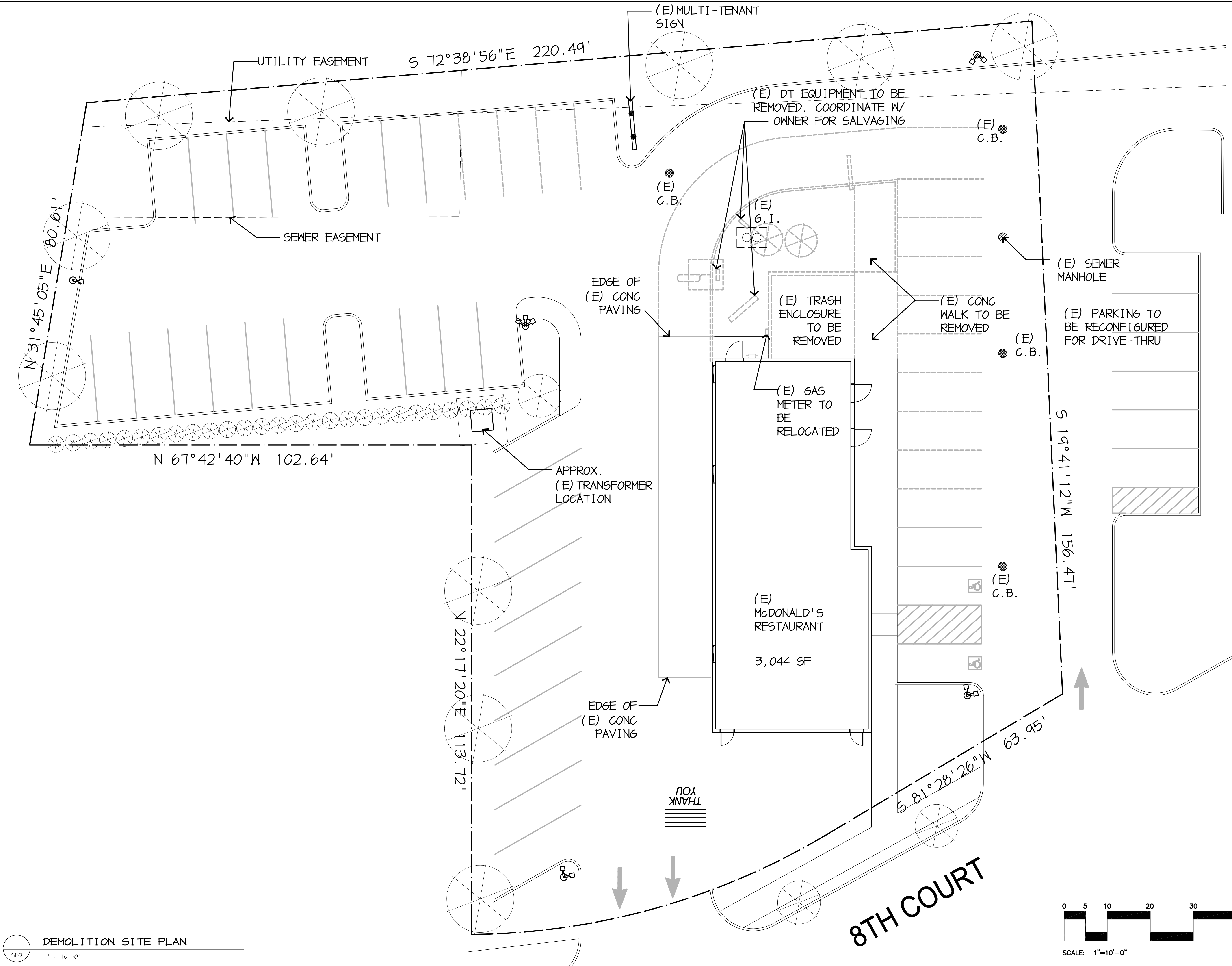
PREPARED FOR:	McDonald's USA, LLC
PROJECT ADDRESS:	2100 8TH COURT WEST LINN, OR 97068
PROJECT CAD FILE:	2007040288
STATE SITE CODE:	096-0182
DATE:	5/29/12
REV:	1
PLANNING COMMENTS:	J.
DESCRIPTION:	
BY:	

Stantec
Stantec Architecture Inc.
Tel: 425.249.1000
Fax: 425.249.1014
www.stantec.com
12094 134th Court NE, Suite 102
Redmond, WA 98052

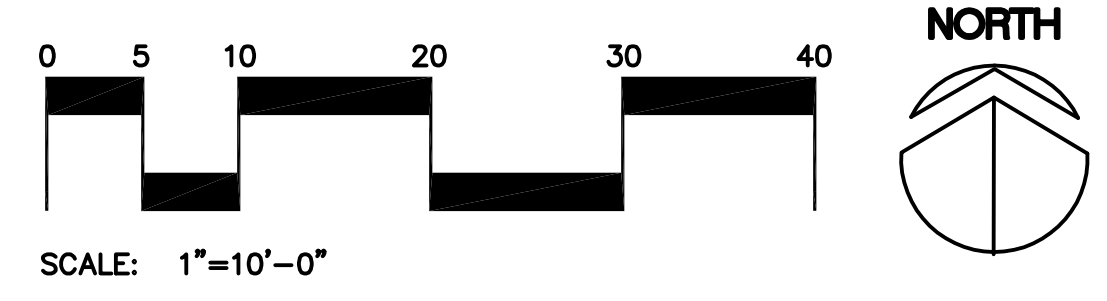
© 2011 McDonald's USA, LLC
These drawings and specifications are the confidential and proprietary information of McDonald's USA, LLC. They are prepared for use on this specific site in conjunction with its issue date and are not suitable for use on a different site or at another project without the express written consent of the architect and engineers. Reproduction of the contract documents for use on another project is strictly prohibited.

PRELIMINARY	PLANNING	5/29/12	PERMIT	BID	CONSTRUCTION
DRAWING TITLE: CANOPY AND GATEWAY DETAILS					

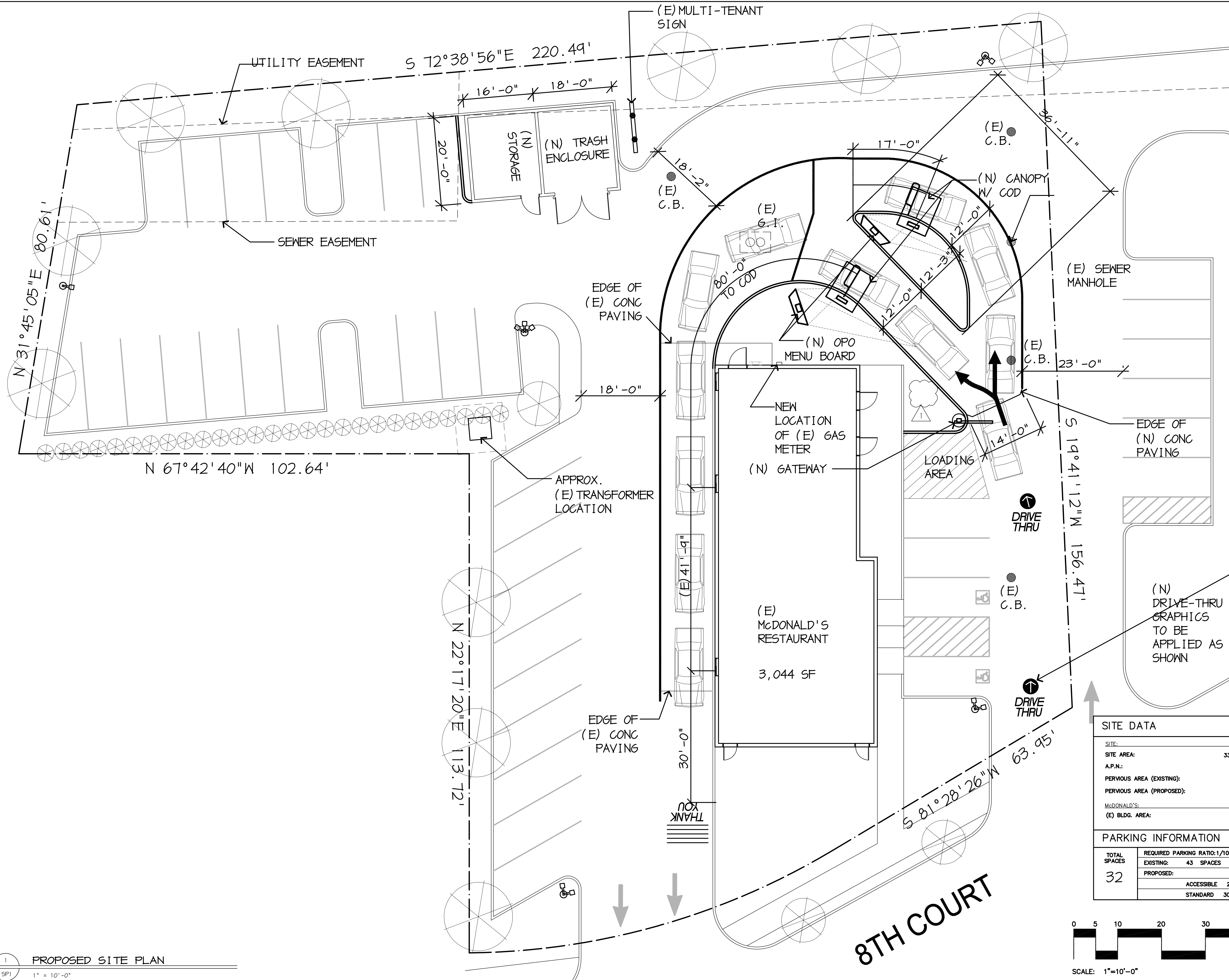
SHEET NO. SD1



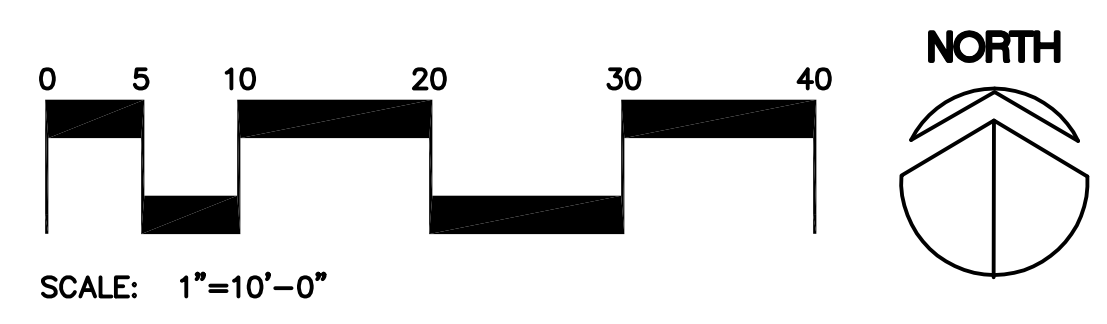
1 DEMOLITION SITE PLAN
 SFO 1" = 10'-0"



SHEET NO.	SPO	
	PROJECT ADDRESS:	2100 8TH COURT, WEST LINN, OR 97068
PROJECT CAD FILE:	2007040208	STATE SITE CODE: 086-0182
DRAWING TITLE:	DEMOLITION SITE PLAN	
PRELIMINARY	PLANNING	PERMIT
	9/29/13	
	BID	
	CONSTRUCTION	
PREPARED FOR:	M. McDonald's USA, LLC	
	© 2011 McDonald's USA, LLC	
	These drawings and specifications are the confidential and proprietary information of McDonald's USA, LLC and are prepared for use on this specific site in conjunction with its issue date and are not suitable for use on a different site or at another project requires the services of properly licensed architects and engineers. Reproduction of the contract documents for use on another project is strictly prohibited.	
Stantec	Stantec Architecture Inc.	Tel: 425.298.1000 Fax: 425.298.1019 www.stantec.com
REV	DATE	DESCRIPTION
1	5/9/12	PLANNING COMMENTS
		BY



SITE DATA	
SITE:	
SITE AREA:	33,058 SF (0.75 AC)
A.P.N.:	01680345
PERVIOUS AREA (EXISTING):	7,385 SF
PERVIOUS AREA (PROPOSED):	7,615 SF
McDONALD'S:	
(E) BLDG. AREA:	3,044 SF
PARKING INFORMATION	
TOTAL SPACES	REQUIRED PARKING RATIO: 1/100 SF (30 SPACES)
32	EXISTING: 43 SPACES
	PROPOSED:
	ACCESSIBLE 2 SPACES 9' X 20'
	STANDARD 30 SPACES 9' X 20'

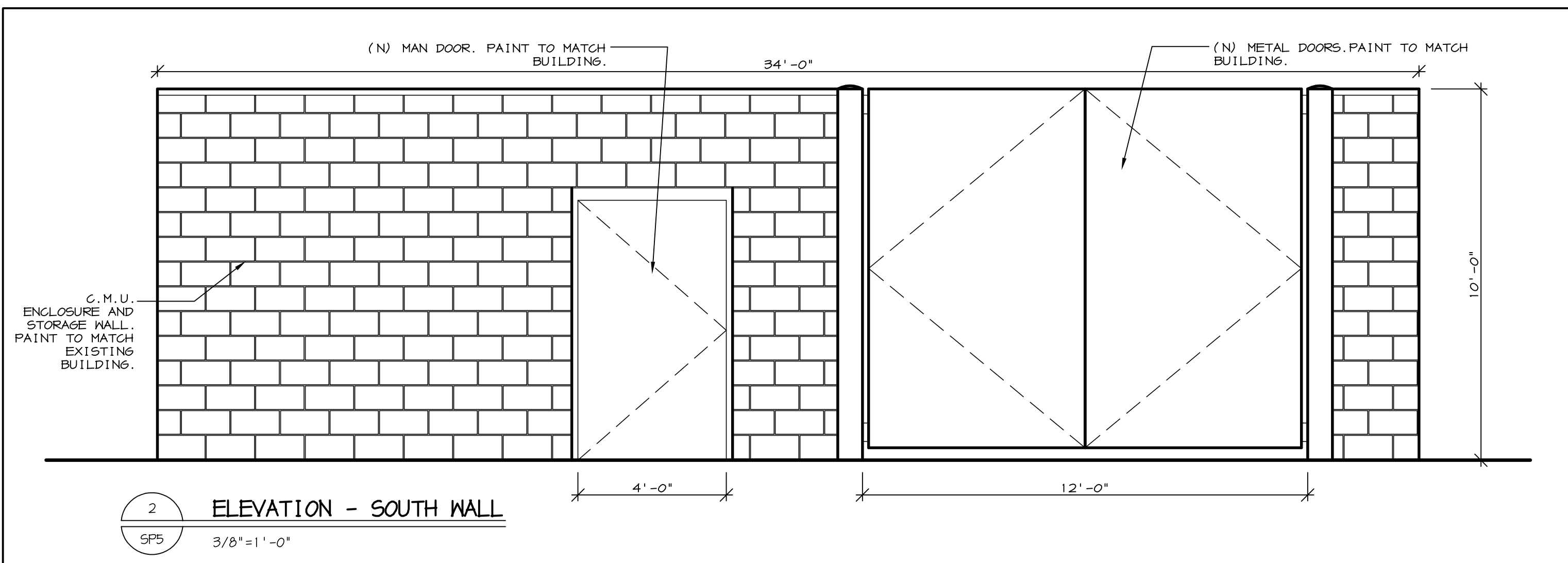


1 PROPOSED SITE PLAN
SPT 1" = 10'-0"

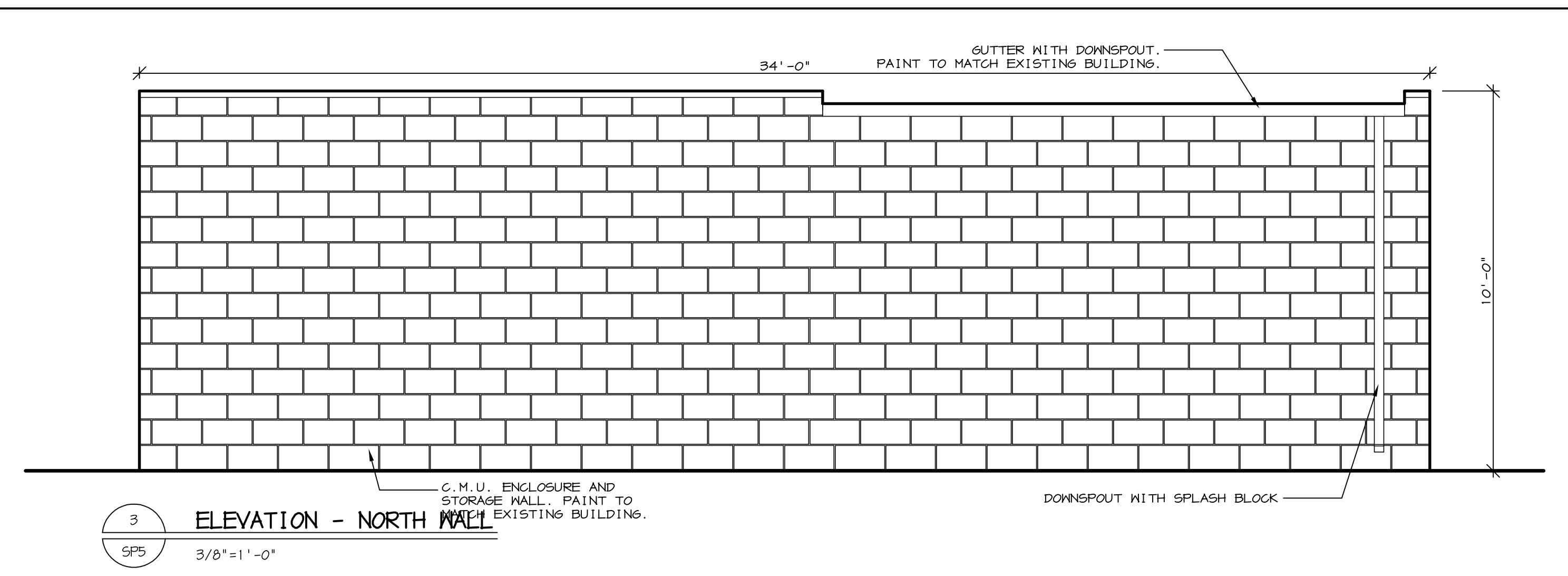
SHEET NO.	SP1	
	PROJECT ADDRESS:	2100 8TH COURT WEST LINN, OR 97068
PROJECT CAD FILE:	STATE SITE CODE:	086-0182
DRAWING TITLE:	PROPOSED SITE PLAN	
PRELIMINARY	PLANNING	PERMIT
	9/29/13	
	BID	
	CONSTRUCTION	
PREPARED FOR:	M. McDonald's USA, LLC	
	These drawings and specifications are the confidential and proprietary information of McDonald's USA, LLC and are prepared for use on this specific site in conjunction with its issue date and are not suitable for use on a different site or at another project requires the services of properly licensed architects and engineers. Reproduction of the contract documents for use on another project is not allowed.	
REV	DATE	DESCRIPTION
1	5/9/12	PLANNING COMMENTS
		BY

Stantec
Stantec Architecture Inc.
12034 134th Court NE, Suite 102
Richmond, WA 98052
Tel: 425.298.1000
Fax: 425.298.1019
www.stantec.com

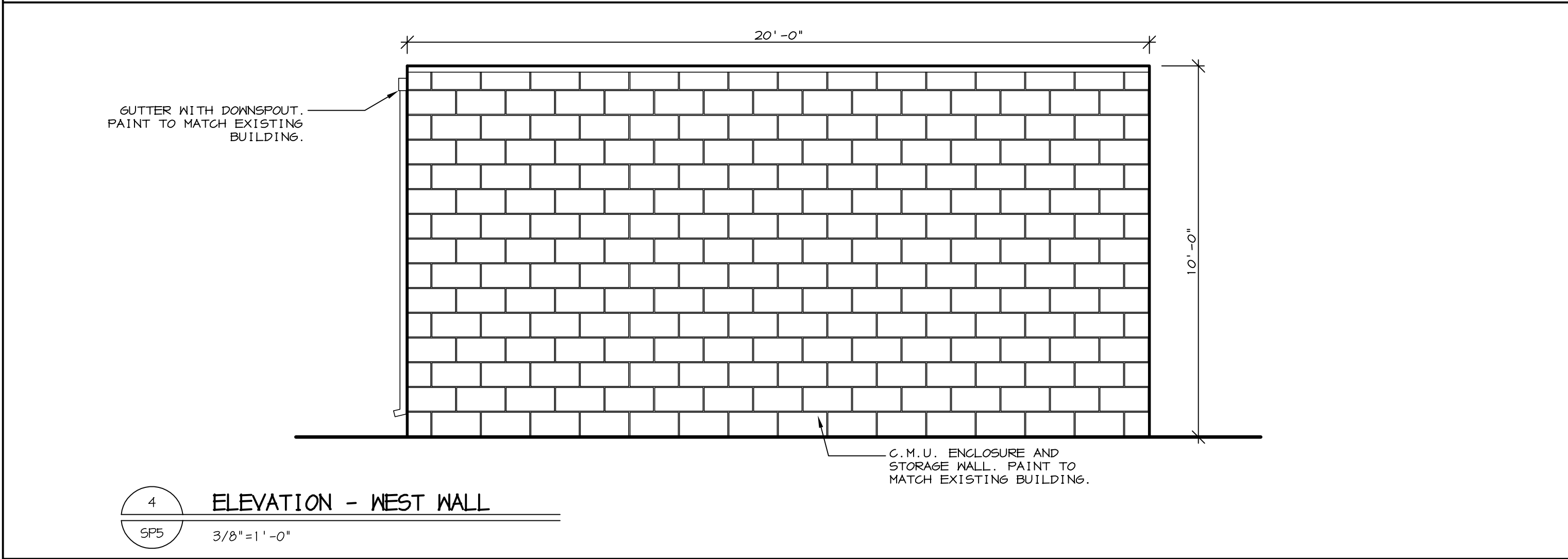
© 2011 McDonald's USA, LLC
PREPARED FOR: M. McDonald's USA, LLC
These drawings and specifications are the confidential and proprietary information of McDonald's USA, LLC and are prepared for use on this specific site in conjunction with its issue date and are not suitable for use on a different site or at another project requires the services of properly licensed architects and engineers. Reproduction of the contract documents for use on another project is not allowed.



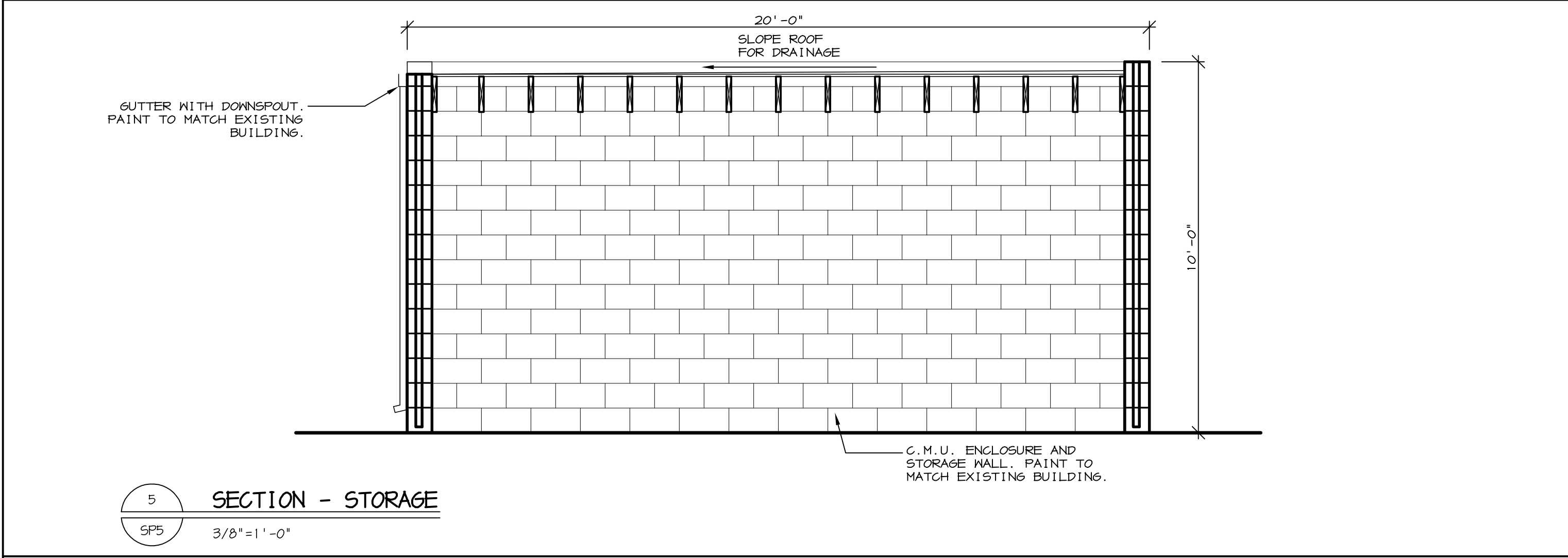
2 ELEVATION - SOUTH WALL
SP5 3/8"=1'-0"



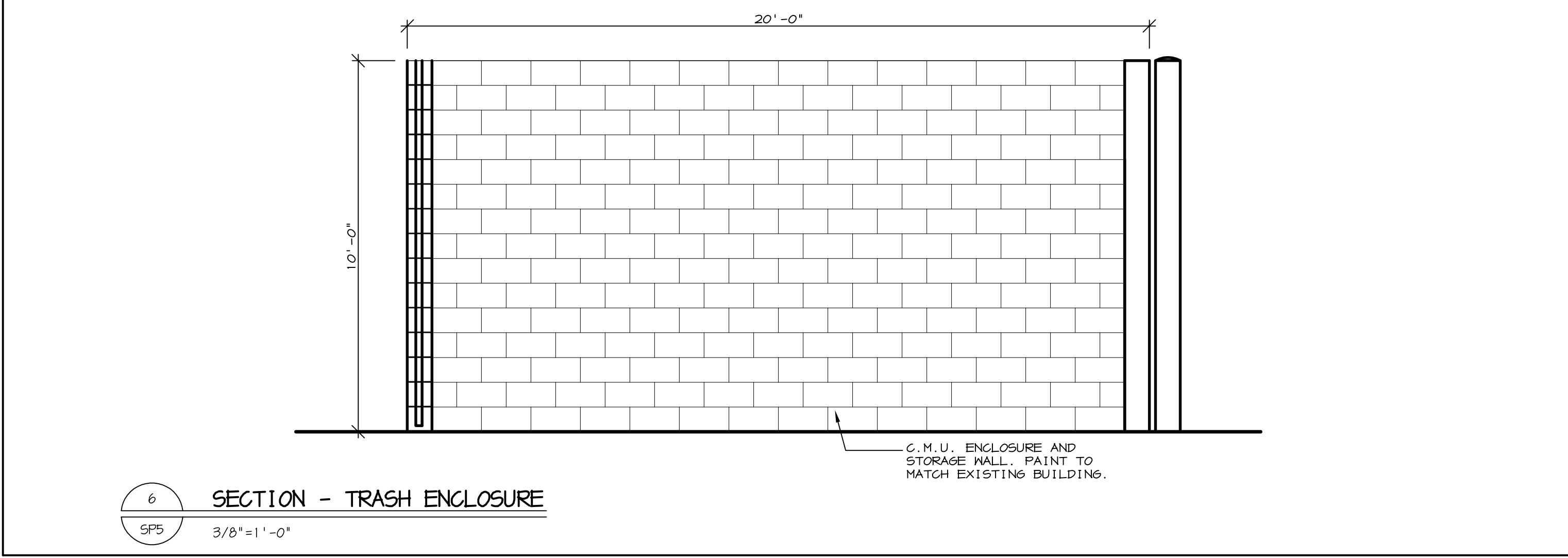
3 ELEVATION - NORTH WALL
SP5 3/8"=1'-0"



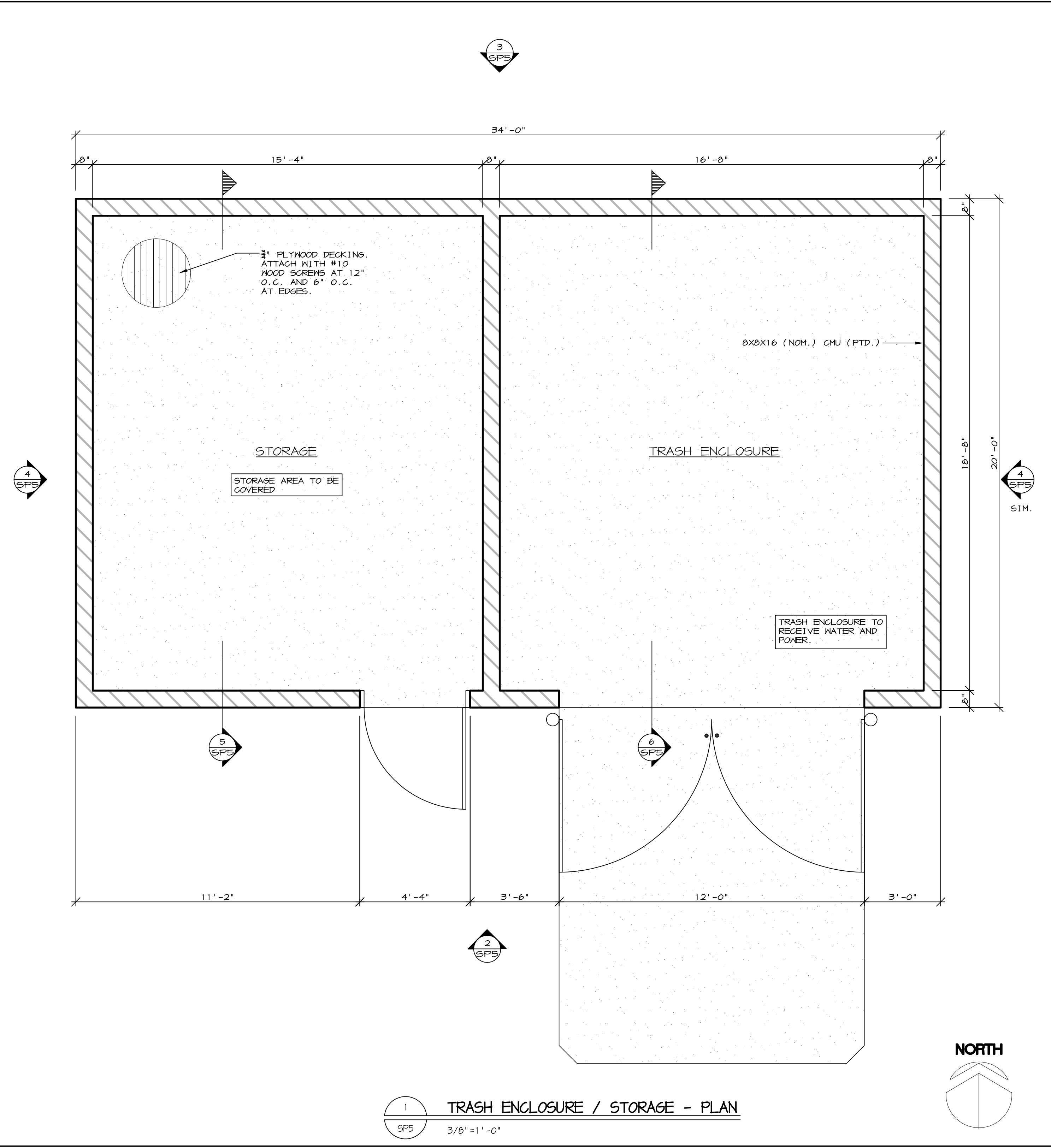
4 ELEVATION - WEST WALL
SP5 3/8"=1'-0"



5 SECTION - STORAGE
SP5 3/8"=1'-0"



6 SECTION - TRASH ENCLOSURE
SP5 3/8"=1'-0"



1 TRASH ENCLOSURE / STORAGE - PLAN
SP5 3/8"=1'-0"

REV	DATE	DESCRIPTION
1	5/9/12	PLANNING COMMENTS

Stantec
Stantec Architecture Inc.
Tel: 425.249.1000
Fax: 425.249.1019
www.stantec.com
12034 134th Court NE, Suite 102
Richmond, WA 98052

PREPARED FOR:
McDonald's USA, LLC
© 2011 McDonald's USA, LLC
These drawings and specifications are the confidential and proprietary information of McDonald's USA, LLC and are prepared for use on this specific site in conjunction with its issue date and are not suitable for use on a different site or at another project without the express written consent of the architect and engineers. Reproduction of the contract documents for issues on another project is not allowed.

PRELIMINARY	PLANNING	PERMIT	BID	CONSTRUCTION
-	9/29/12	-	-	-

DRAWING TITLE:
TRASH ENCLOSURE
PROJECT ADDRESS:
2100 8TH COURT WEST LINN, OR 97068
PROJECT CAD FILE:
2007040208
STATE SITE CODE:
086-0182
SHEET NO.
SP5
PLOT SCALE: 1"=1' MDA-B08