

- GENERAL SHEET NOTES**
1. UTILITIES NOT SHOWN FOR CLARITY. SEE FIGURES 5.0 - 5.6
 2. SEE FIGURES 11.0 - 12.6 FOR PLANTING PLANS - NOT SHOWN FOR CLARITY
 3. SEE FIGURE 7.0 FOR PEDESTRIAN AND AUTOMOBILE CIRCULATION PLAN, PARKING AND DIMENSIONS.
 4. THERE ARE NO TYPE II LANDS ON THIS SITE.
 5. FOR TREES TO BE REMOVED, SEE FIGURES 2.9 - 2.12.
 6. GROSS SITE AREA IS 9.24 ACRES.
 7. FOR FENCE TYPE AND DETAIL - SEE FIGURES 11.0-12.6.
 8. GARBAGE AND RECYCLE TO BE SCREENED BY SECURITY FENCE. ACCESS BY COLLECTOR VIA SEPERATE GATE
 9. TREE PROTECTION AREA SHOWN EQUALS 18.7% OF THE TOTAL SITE AREA
 10. THE FAR = 0.155
 11. THE PROPOSED LOT COVERAGE = 85,610

- LEGEND**
- SITE BOUNDARY / PROPERTY LINE
 - C KEY PLAN BOUNDARY
 - [Pattern] CONSTRUCTED PERVIOUS SURFACE
 - [Pattern] CONSTRUCTED GRAVEL SURFACE
 - [Pattern] IMPERVIOUS SURFACE
 - [Pattern] GREEN ROOF
 - [Pattern] OPEN PROCESS TANKS
 - [Pattern] OPEN SPACE / LANDSCAPE AREA
 - [Pattern] TREE PROTECTION AREA
 - [Symbol] CONIFEROUS TREE TO REMAIN
 - [Symbol] DECIDUOUS TREE TO REMAIN
 - [Symbol] TREE OF SIGNIFICANCE
 - ~ 142 ~ CONTOUR LINE
 - SITE SET-BACKS
 - [Symbol] SURVEY BENCHMARK

PLOT DATE: September 10, 2008 - 1:55PM USER: abraat
 FILE: C:\pwork\lms5297138964.TITLE BLOCK FOR PERMITTING.dwg



LINE IS 2 INCHES
 AT FULL SIZE
 (IF NOT 2" - SCALE ACCORDINGLY)
 DESIGNED: ####
 DRAWN: ####
 CHECKED: ####
 CHECKED: ####
 APPROVED: ####

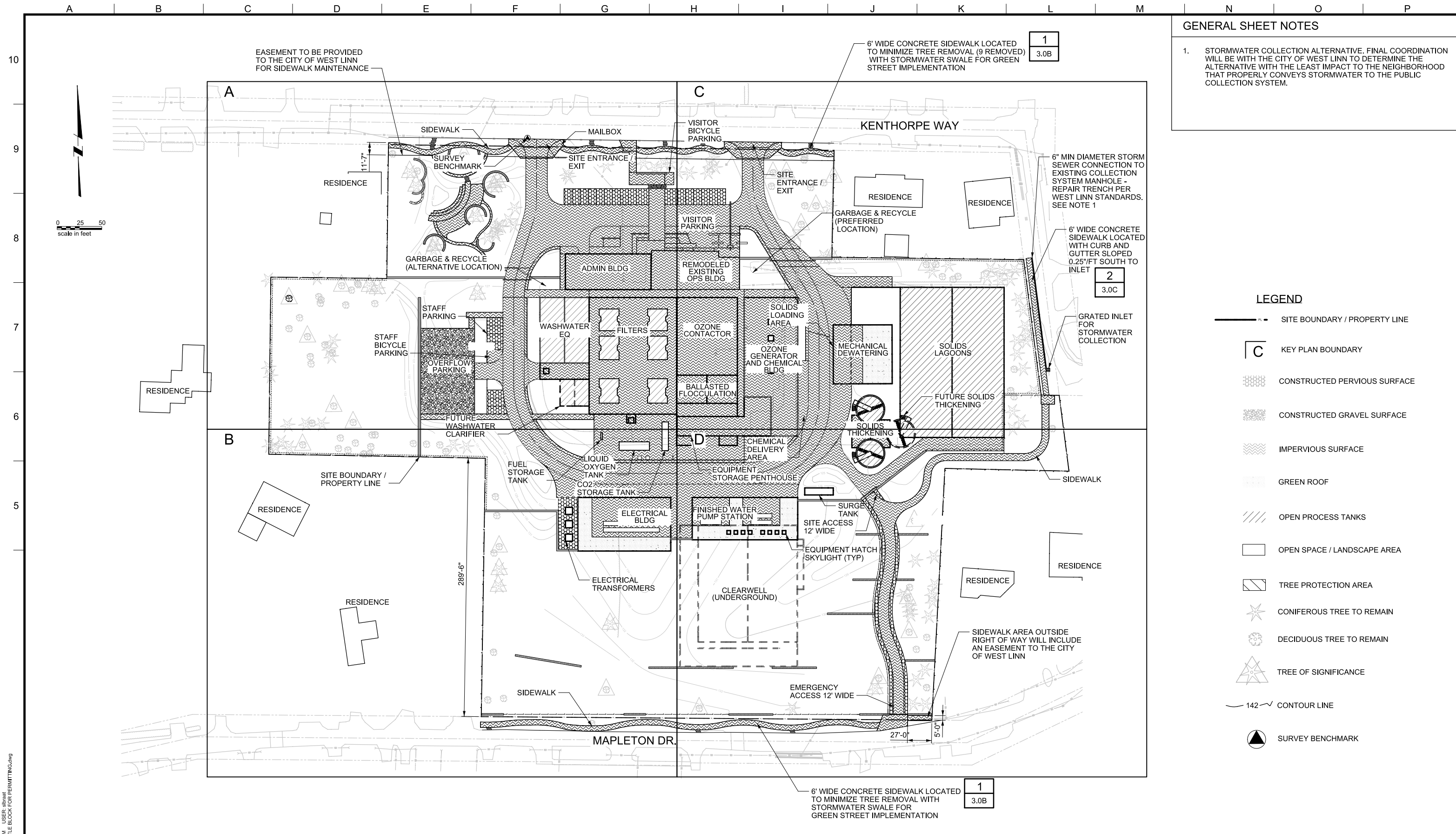
| REVISIONS | | | |
|-----------|-------------|----|------|
| REV. | DESCRIPTION | BY | APP. |
| | | | |
| | | | |
| | | | |

OWNER:
 CITY OF LAKE OSWEGO
 380 A AVENUE
 LAKE OSWEGO, OR 97034
 PHONE: 503-635-0270



LAKE OSWEGO AND TIGARD WATER TREATMENT PLANT
 DESIGN REVIEW AND CONDITIONAL USE
**PROPOSED SITE PLAN
 OVERVIEW**

| | |
|-----------------------|----------|
| FILENAME | |
| PROJECT NUMBER | |
| SCALE | 1" = 50' |
| DRAWING/FIGURE NUMBER | 3.0 |
| #### OF | |



GENERAL SHEET NOTES

1. STORMWATER COLLECTION ALTERNATIVE. FINAL COORDINATION WILL BE WITH THE CITY OF WEST LINN TO DETERMINE THE ALTERNATIVE WITH THE LEAST IMPACT TO THE NEIGHBORHOOD THAT PROPERLY CONVEYS STORMWATER TO THE PUBLIC COLLECTION SYSTEM.

- LEGEND**
- SITE BOUNDARY / PROPERTY LINE
 - KEY PLAN BOUNDARY
 - CONSTRUCTED PERVIOUS SURFACE
 - CONSTRUCTED GRAVEL SURFACE
 - IMPERVIOUS SURFACE
 - GREEN ROOF
 - OPEN PROCESS TANKS
 - OPEN SPACE / LANDSCAPE AREA
 - TREE PROTECTION AREA
 - CONIFEROUS TREE TO REMAIN
 - DECIDUOUS TREE TO REMAIN
 - TREE OF SIGNIFICANCE
 - 142' CONTOUR LINE
 - SURVEY BENCHMARK

PLOT DATE: September 10, 2008 - 1:55PM USER: abraat
 FILE: C:\pwork\lms5297138564.TITLE BLOCK FOR PERMITTING.dwg



LINE IS 2 INCHES
 AT FULL SIZE
 (IF NOT 2" - SCALE ACCORDINGLY)

DESIGNED: ####
 DRAWN: ####
 CHECKED: ####
 CHECKED: ####
 APPROVED: ####

| REVISIONS | | | | |
|-----------|-------------|----|------|--|
| REV. | DESCRIPTION | BY | APP. | |
| | | | | |
| | | | | |
| | | | | |

OWNER:
 CITY OF LAKE OSWEGO
 380 A AVENUE
 LAKE OSWEGO, OR 97034
 PHONE: 503-635-0270

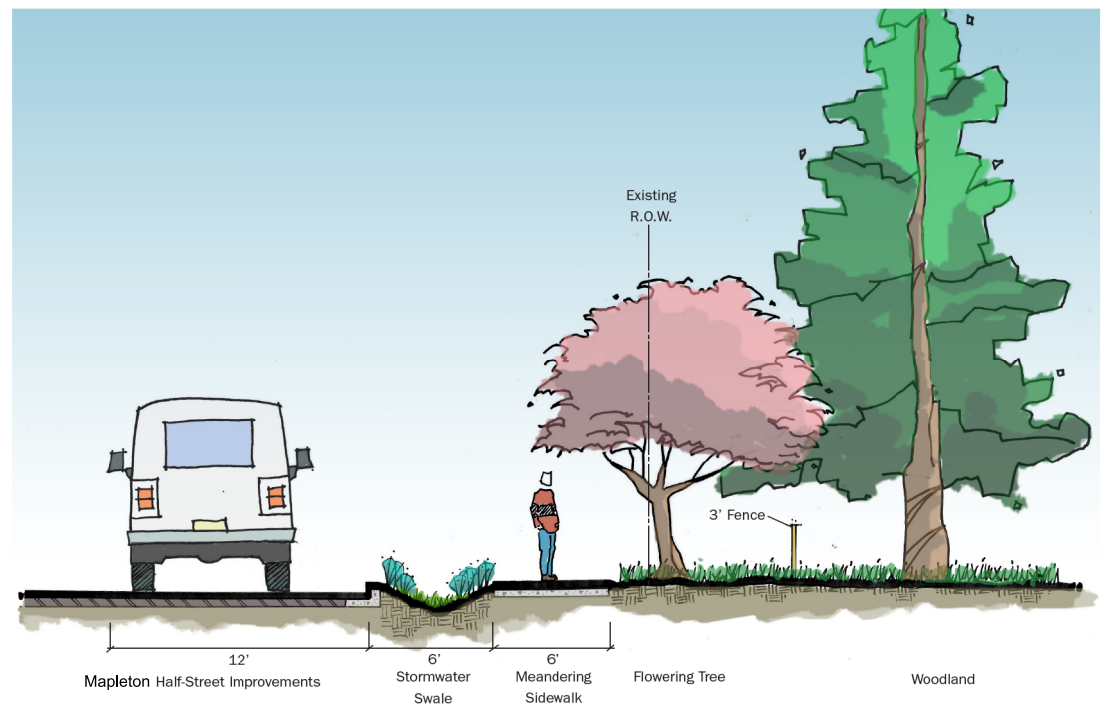
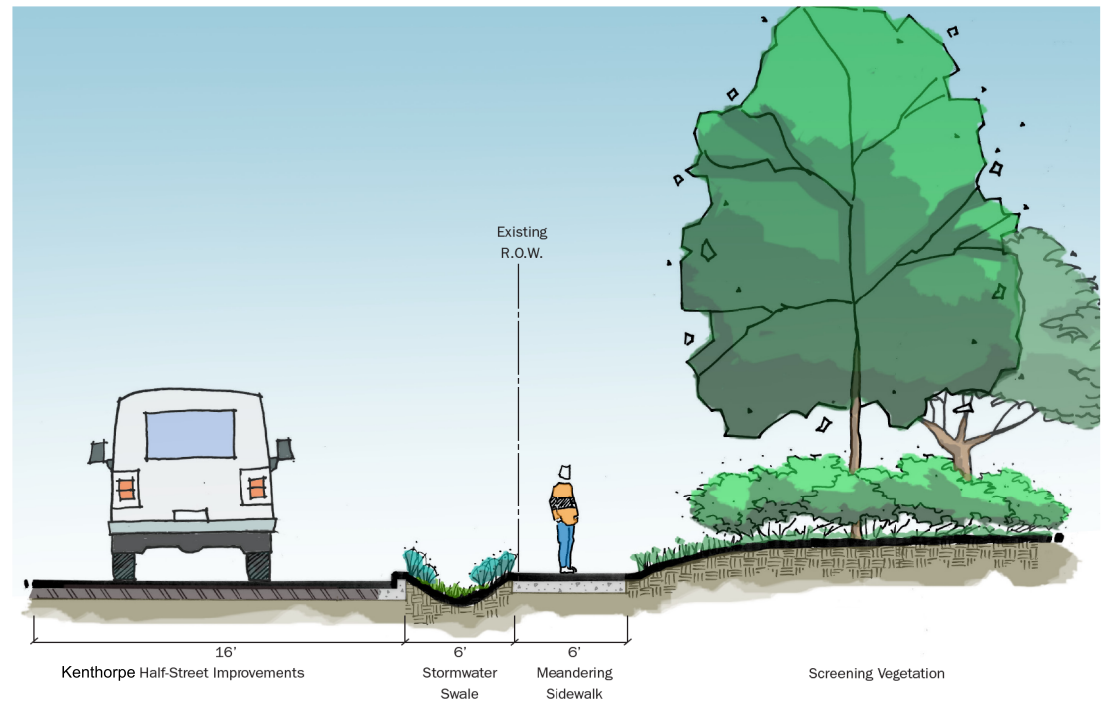


LAKE OSWEGO AND TIGARD WATER TREATMENT PLANT
 DESIGN REVIEW AND CONDITIONAL USE
**PROPOSED SIDEWALK AND STORMWATER
 COLLECTION ALTERNATIVE**

| | |
|-----------------------|----------|
| FILENAME | |
| PROJECT NUMBER | |
| SCALE | 1" = 50' |
| DRAWING/FIGURE NUMBER | 3.0A |
| ### OF | |

GENERAL SHEET NOTES

1. STORMWATER SWALES TO BE DESIGNED AND OPERATED TO PORTLAND BES STANDARDS.
2. STREETS TO BE DESIGNED AND CONSTRUCTED TO CITY OF WEST LINN STANDARDS.
3. SIDEWALKS ON STREET FRONTAGES SHALL BE DESIGNED AND CONSTRUCTED TO CITY OF WEST LINN STANDARDS.



| | |
|-----------|------|
| Sidewalks | 1 |
| | 3.0A |



LINE IS 2 INCHES AT FULL SIZE (IF NOT 2" - SCALE ACCORDINGLY)

DESIGNED: ####

DRAWN: ####

CHECKED: ####

CHECKED: ####

APPROVED: ####

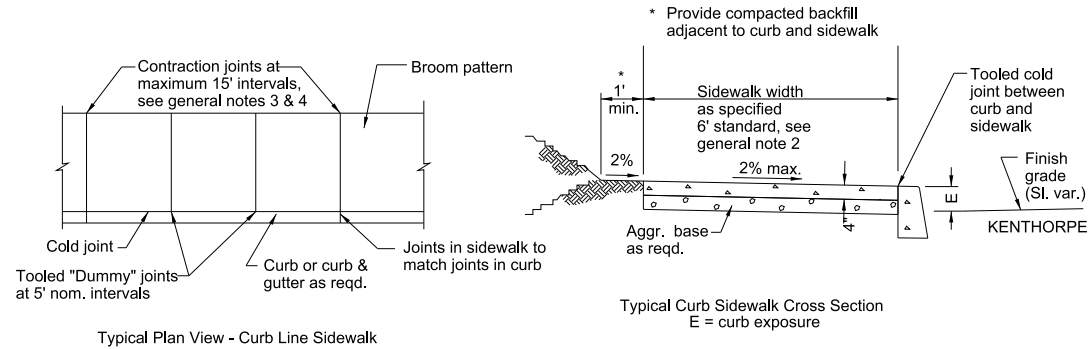
| REVISIONS | | | | |
|-----------|-------------|----|------|------|
| REV. | DESCRIPTION | BY | DATE | APP. |
| | | | | |
| | | | | |
| | | | | |

OWNER:
 CITY OF LAKE OSWEGO
 380 A AVENUE
 LAKE OSWEGO, OR 97034
 PHONE: 503-635-0270



LAKE OSWEGO AND TIGARD WATER TREATMENT PLANT
 DESIGN REVIEW AND CONDITIONAL USE
PROPOSED SIDEWALK AND STORMWATER SECTIONS - I

| | |
|-----------------------|----------|
| FILENAME | |
| PROJECT NUMBER | |
| SCALE | NO SCALE |
| DRAWING/FIGURE NUMBER | 3.0B |
| ### OF | |



- General notes for all details:
1. Include additional paved or unpaved 2' clearance to vertical faces higher than 5' such as retaining walls, sound walls, fences and buildings.
 2. Curb type and sidewalk width as shown on plans or as directed. On sidewalks 8' and wider, provide a longitudinal joint at the midpoint.
 3. Const. expansion joints at 200' maximum spacing, and at points of tangency, and at ends of each driveway. For monolithic curb & sidewalk, const. expansion joints at 45' maximum spacing.
 4. Const. contraction joints at 15' maximum spacing, and at ends of each driveway and ramp.
 5. Sidewalk details are based on United States Access Board Standards.

| | |
|-----------|------|
| Sidewalks | 2 |
| | 3.0A |

PLOT DATE: September 10, 2008 - 1:55PM USER: abraat FILE: C:\pwork\dm55297138564.TITLE BLOCK FOR PERMITTING.dwg



LINE IS 2 INCHES AT FULL SIZE (IF NOT 2" - SCALE ACCORDINGLY)

DESIGNED: ####
 DRAWN: ####
 CHECKED: ####
 CHECKED: ####
 APPROVED: ####

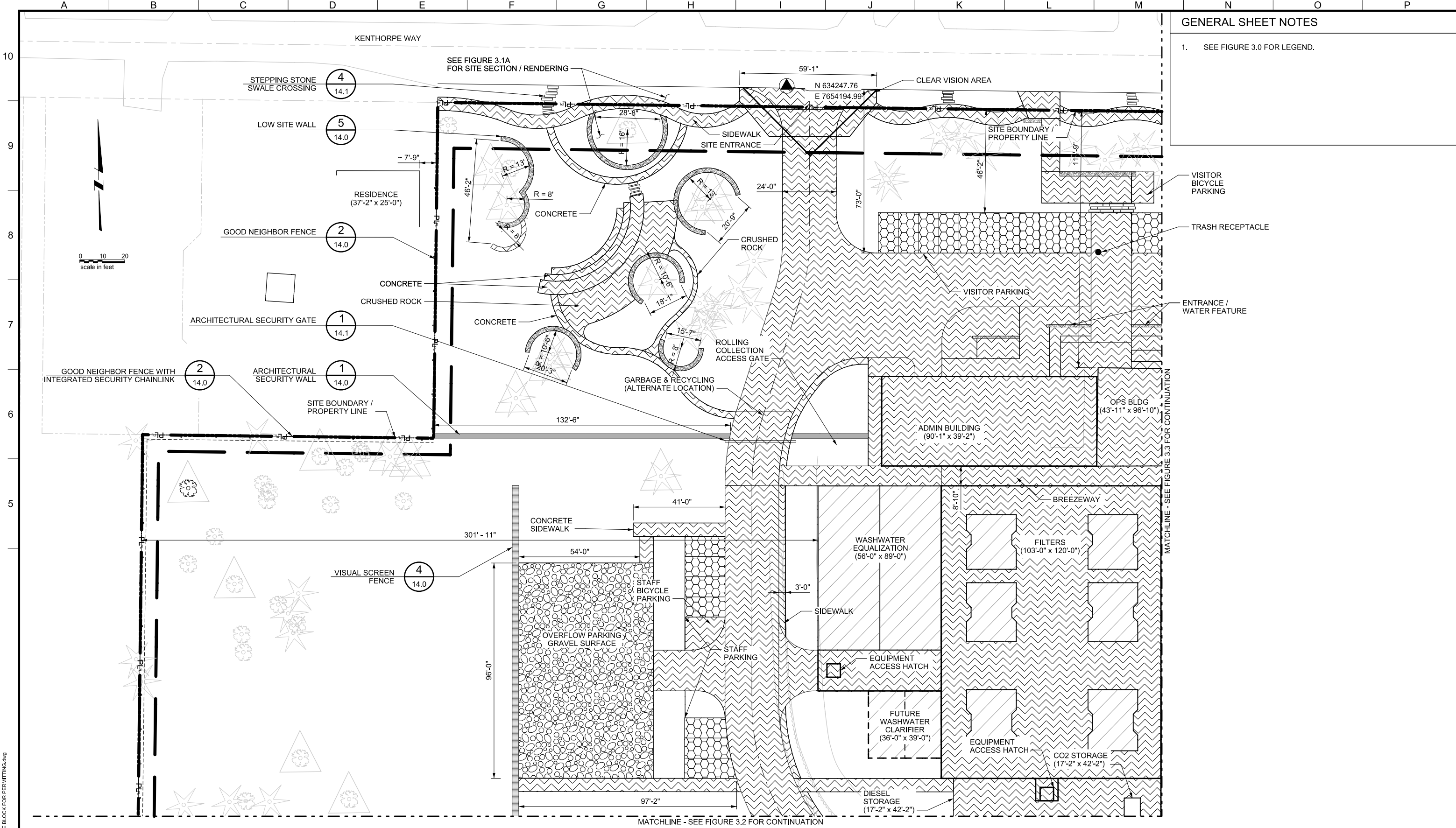
| REVISIONS | | | | |
|-----------|-------------|----|------|------|
| REV. | DESCRIPTION | BY | DATE | APP. |
| | | | | |
| | | | | |
| | | | | |

OWNER:
 CITY OF LAKE OSWEGO
 380 A AVENUE
 LAKE OSWEGO, OR 97034
 PHONE: 503-635-0270



LAKE OSWEGO AND TIGARD WATER TREATMENT PLANT
 DESIGN REVIEW AND CONDITIONAL USE
 PROPOSED SIDEWALK AND STORMWATER
 SECTIONS - II

| |
|-----------------------|
| FILENAME |
| PROJECT NUMBER |
| SCALE |
| NO SCALE |
| DRAWING/FIGURE NUMBER |
| 3.0C |
| ### OF |



GENERAL SHEET NOTES

1. SEE FIGURE 3.0 FOR LEGEND.

MATCHLINE - SEE FIGURE 3.3 FOR CONTINUATION

MATCHLINE - SEE FIGURE 3.2 FOR CONTINUATION



LINE IS 2 INCHES AT FULL SIZE (IF NOT 2" - SCALE ACCORDINGLY)

DESIGNED: ####
 DRAWN: ####
 CHECKED: ####
 CHECKED: ####
 APPROVED: ####

| REVISIONS | | | | |
|-----------|-------------|----|------|------|
| REV. | DESCRIPTION | BY | DATE | APP. |
| | | | | |
| | | | | |
| | | | | |

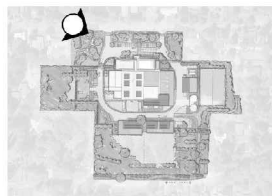
OWNER:
 CITY OF LAKE OSWEGO
 380 A AVENUE
 LAKE OSWEGO, OR 97034
 PHONE: 503-635-0270



LAKE OSWEGO AND TIGARD WATER TREATMENT PLANT
 DESIGN REVIEW AND CONDITIONAL USE
PROPOSED SITE PLAN
 AREA A

| | |
|-----------------------|----------|
| FILENAME | |
| PROJECT NUMBER | |
| SCALE | 1" = 20' |
| DRAWING/FIGURE NUMBER | 3.1 |
| #### OF | |

PLOT DATE: September 10, 2008 - 1:55PM USER: abraat FILE: C:\pwork\dlms5297138564.TITLE BLOCK FOR PERMITTING.dwg



GREENWORKS
 GreenWorks, P.C.
 Landscape Architecture
 Environmental Design
 24 NW 2nd Avenue, Suite 100
 Portland, Oregon 97209
 PH: 503.222.5612 / F: 503.222.2383
 Email: info@greenworkspc.com

MWH
 806 SW BROADWAY, SUITE 200
 PORTLAND, OREGON 97205

LINE IS 2 INCHES
 AT FULL SIZE
 (IF NOT 2" - SCALE ACCORDINGLY)

DESIGNED: JB
 DRAWN: DS
 CHECKED: JB
 CHECKED: RT
 APPROVED: MF

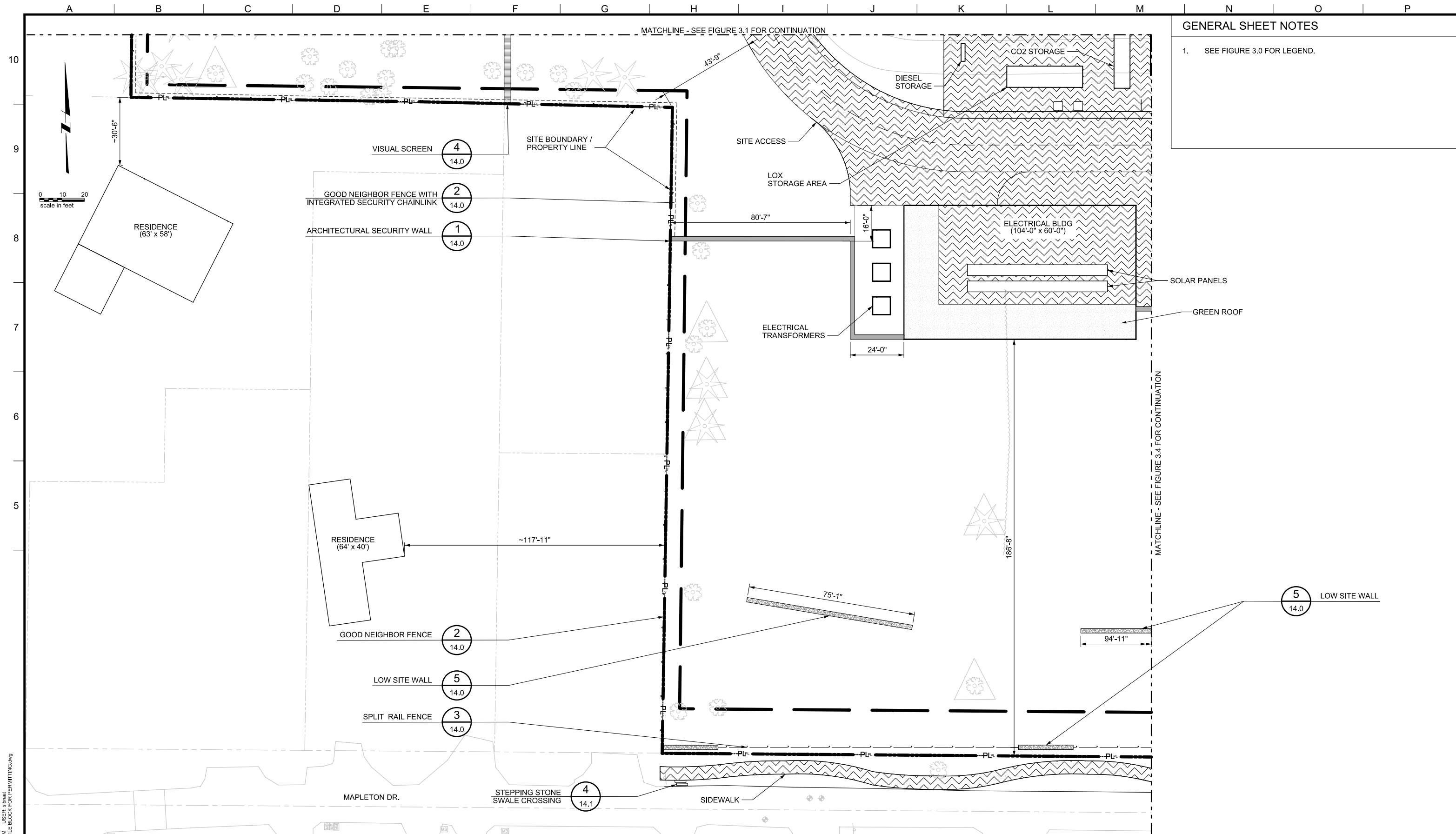
| REVISIONS | | | |
|-----------|--|----|------|
| REV | DESCRIPTION | BY | APP. |
| 1 | TITLE BLOCK FOR PERMITTING AND CIVIL LOGO SQUARE DWG | | |
| 2 | W01424-BORDER.dwg | | |

OWNER:
 CITY OF LAKE OSWEGO
 380 A AVENUE
 LAKE OSWEGO, OR 97034
 PHONE: 503-635-0270



LAKE OSWEGO AND TIGARD WATER TREATMENT PLANT
 DESIGN REVIEW AND CONDITIONAL USE
VIGNETTE
 KENTHORPE STORMWATER AREA

| | |
|-----------------------|-------------|
| FILENAME | |
| PROJECT NUMBER | |
| SCALE | |
| DRAWING FIGURE NUMBER | 3.1A |
| 52 OF | |



GENERAL SHEET NOTES

1. SEE FIGURE 3.0 FOR LEGEND.

PLOT DATE: September 10, 2008 - 1:55PM USER: abraat
 FILE: C:\pwork\dm5297138564.TITLE BLOCK FOR PERMITTING.dwg



LINE IS 2 INCHES
 AT FULL SIZE
 (IF NOT 2" - SCALE ACCORDINGLY)
 DESIGNED: ####
 DRAWN: ####
 CHECKED: ####
 CHECKED: ####
 APPROVED: ####

| REVISIONS | | | | |
|-----------|-------------|----|------|------|
| NO. | DESCRIPTION | BY | DATE | APP. |
| | | | | |
| | | | | |
| | | | | |

OWNER:
 CITY OF LAKE OSWEGO
 380 A AVENUE
 LAKE OSWEGO, OR 97034
 PHONE: 503-635-0270

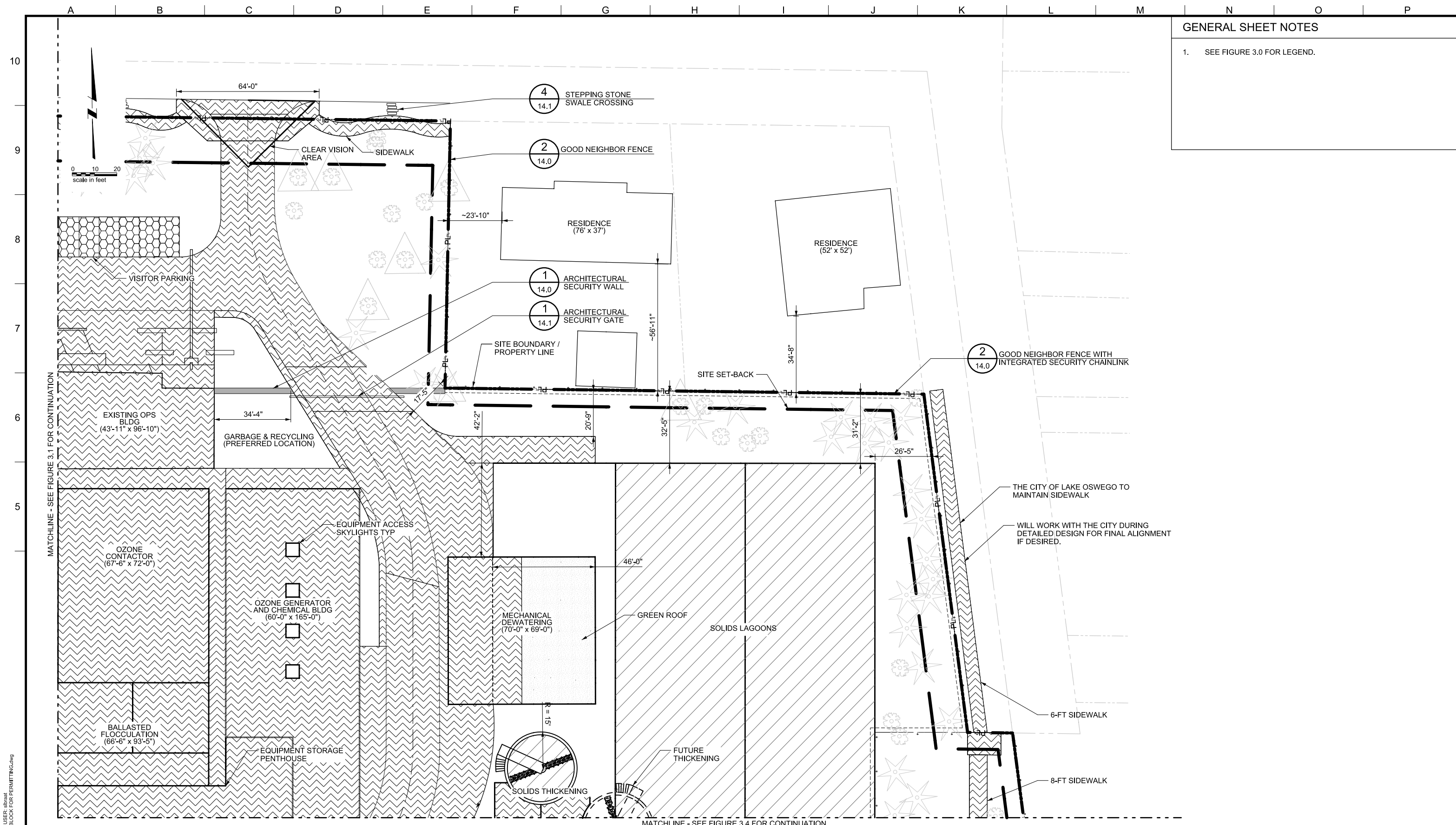


LAKE OSWEGO AND TIGARD WATER TREATMENT PLANT
 DESIGN REVIEW AND CONDITIONAL USE
PROPOSED SITE PLAN
 AREA B

| | |
|-----------------------|----------|
| FILENAME | |
| PROJECT NUMBER | |
| SCALE | 1" = 20' |
| DRAWING/FIGURE NUMBER | 3.2 |
| ### OF | |

GENERAL SHEET NOTES

1. SEE FIGURE 3.0 FOR LEGEND.



LINE IS 2 INCHES AT FULL SIZE (IF NOT 2" - SCALE ACCORDINGLY)

DESIGNED: ####
 DRAWN: ####
 CHECKED: ####
 CHECKED: ####
 APPROVED: ####

| REV. | DESCRIPTION | BY | APP. |
|------|-------------|----|------|
| | | | |
| | | | |
| | | | |

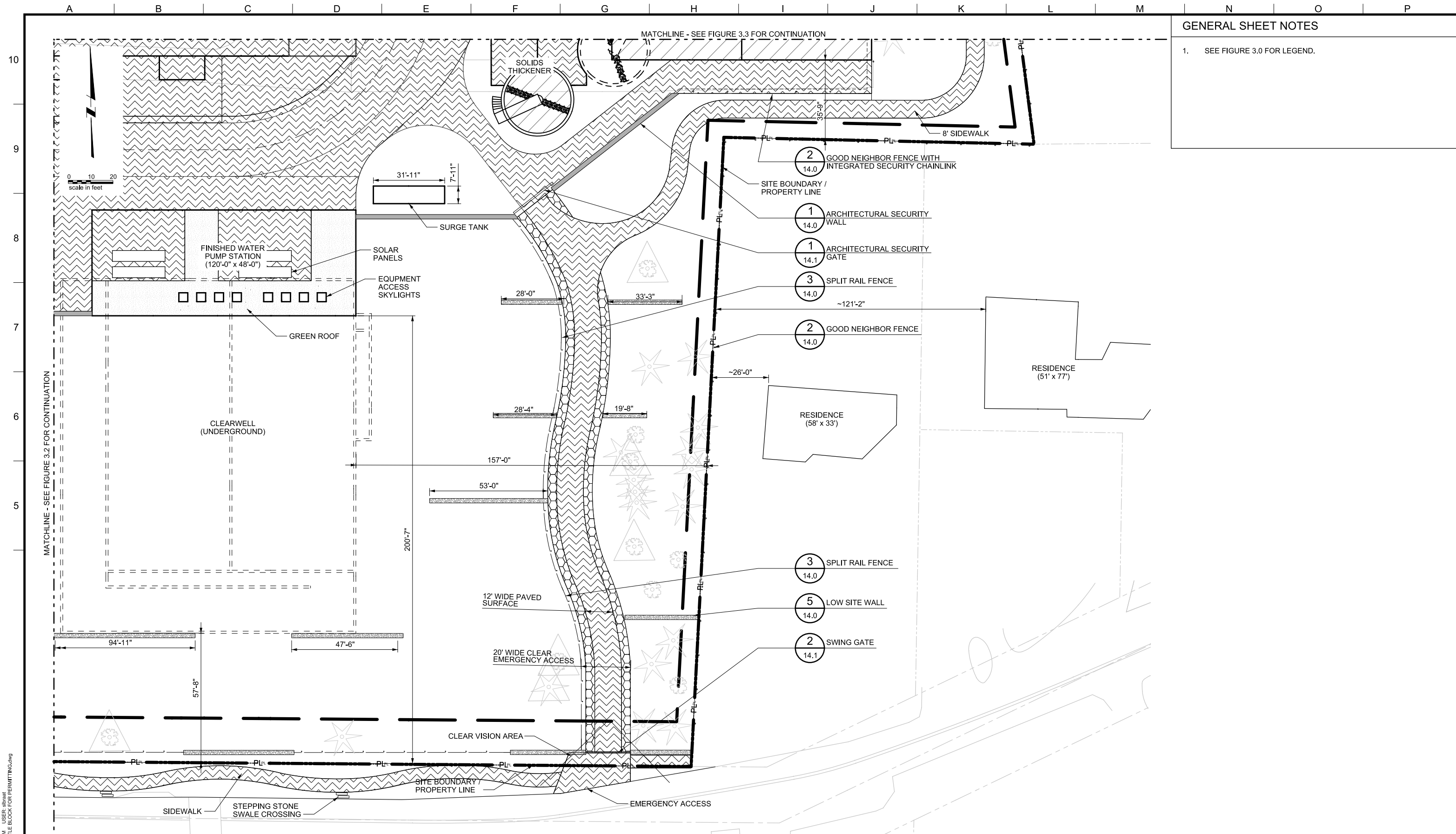
OWNER:
 CITY OF LAKE OSWEGO
 380 A AVENUE
 LAKE OSWEGO, OR 97034
 PHONE: 503-635-0270



LAKE OSWEGO AND TIGARD WATER TREATMENT PLANT
 DESIGN REVIEW AND CONDITIONAL USE
 PROPOSED SITE PLAN
 AREA C

| | |
|-----------------------|----------|
| FILENAME | |
| PROJECT NUMBER | |
| SCALE | 1" = 20' |
| DRAWING/FIGURE NUMBER | 3.3 |
| ### OF | |

PLOT DATE: September 10, 2008 - 1:55PM USER: abraat FILE: C:\pwork\dlms5297138564.TITLE BLOCK FOR PERMITTING.dwg



GENERAL SHEET NOTES

1. SEE FIGURE 3.0 FOR LEGEND.

PLOT DATE: September 10, 2008 - 1:55PM USER: abraat
 FILE: C:\work\dirms5297138564.TITLE BLOCK FOR PERMITTING.dwg

MWH
 806 SW BROADWAY, SUITE 200
 PORTLAND, OREGON 97205

LINE IS 2 INCHES
 AT FULL SIZE
 (IF NOT 2" - SCALE ACCORDINGLY)

DESIGNED: ####
 DRAWN: ####
 CHECKED: ####
 CHECKED: ####
 APPROVED: ####

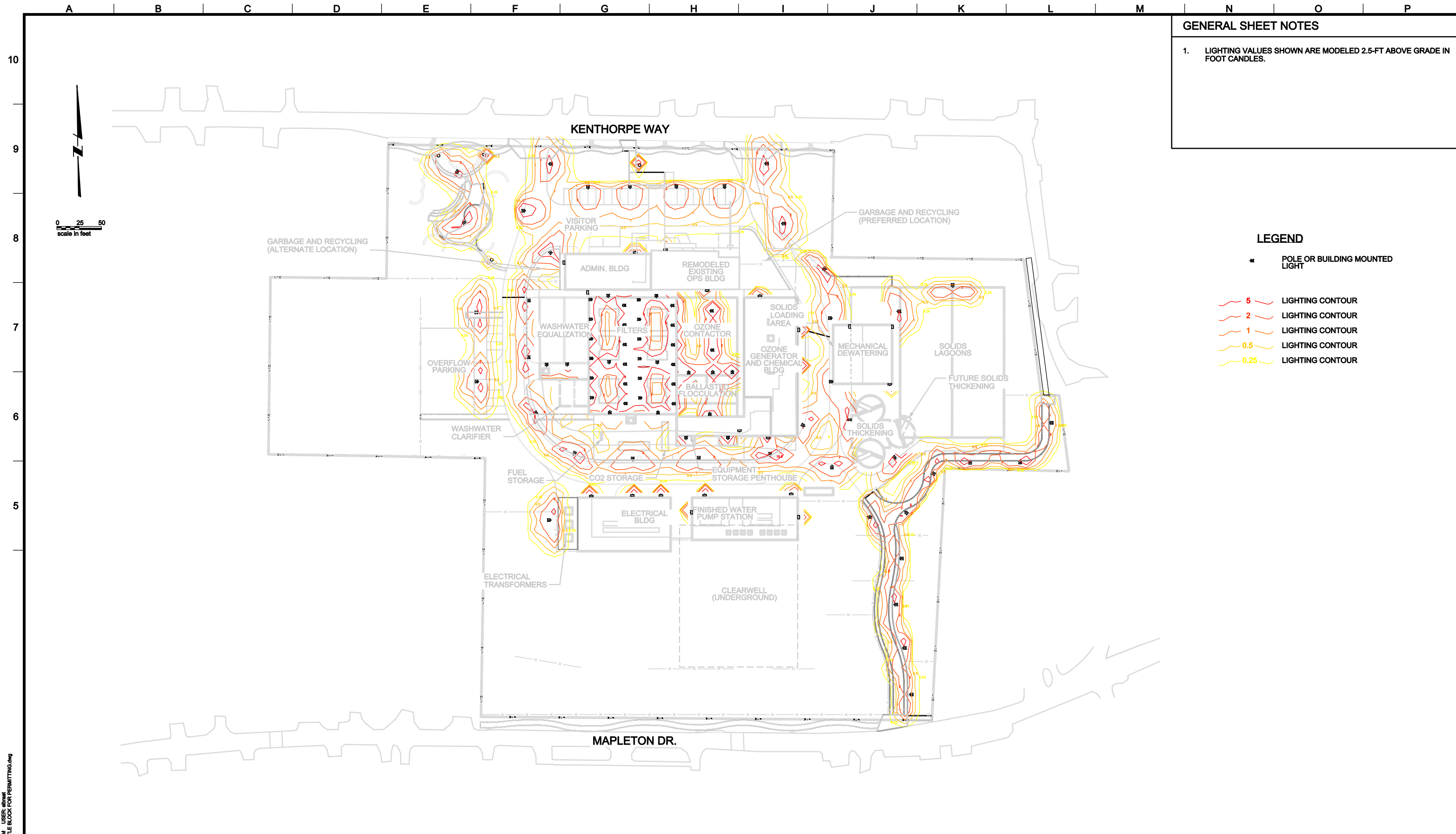
| REVISIONS | | | | |
|-----------|-------------|----|------|--|
| REV. | DESCRIPTION | BY | APP. | |
| | | | | |
| | | | | |

OWNER:
 CITY OF LAKE OSWEGO
 380 A AVENUE
 LAKE OSWEGO, OR 97034
 PHONE: 503-635-0270

**Lake Oswego - Tigard
 Water Partnership**
sharing water - connecting communities

LAKE OSWEGO AND TIGARD WATER TREATMENT PLANT
 DESIGN REVIEW AND CONDITIONAL USE
**PROPOSED SITE PLAN
 AREA D**

| | |
|-----------------------|------------|
| FILENAME | |
| PROJECT NUMBER | |
| SCALE | 1" = 20' |
| DRAWING/FIGURE NUMBER | 3.4 |
| ### OF | |



GENERAL SHEET NOTES

1. LIGHTING VALUES SHOWN ARE MODELED 2.5-FT ABOVE GRADE IN FOOT CANDLES.

- LEGEND**
- POLE OR BUILDING MOUNTED LIGHT
 - 5 LIGHTING CONTOUR
 - 2 LIGHTING CONTOUR
 - 1 LIGHTING CONTOUR
 - 0.5 LIGHTING CONTOUR
 - 0.25 LIGHTING CONTOUR

PLOT DATE: September 10, 2008 - 1:56PM USER: abinat
 FILE: C:\pwworkdir\m520713864-TITLE BLOCK FOR PERMITTING.dwg



LINE IS 2 INCHES
AT FULL SIZE
(IF NOT 2" - SCALE ACCORDINGLY)

DESIGNED: ###
DRAWN: ###
CHECKED: ###
CHECKED: ###
APPROVED: ###

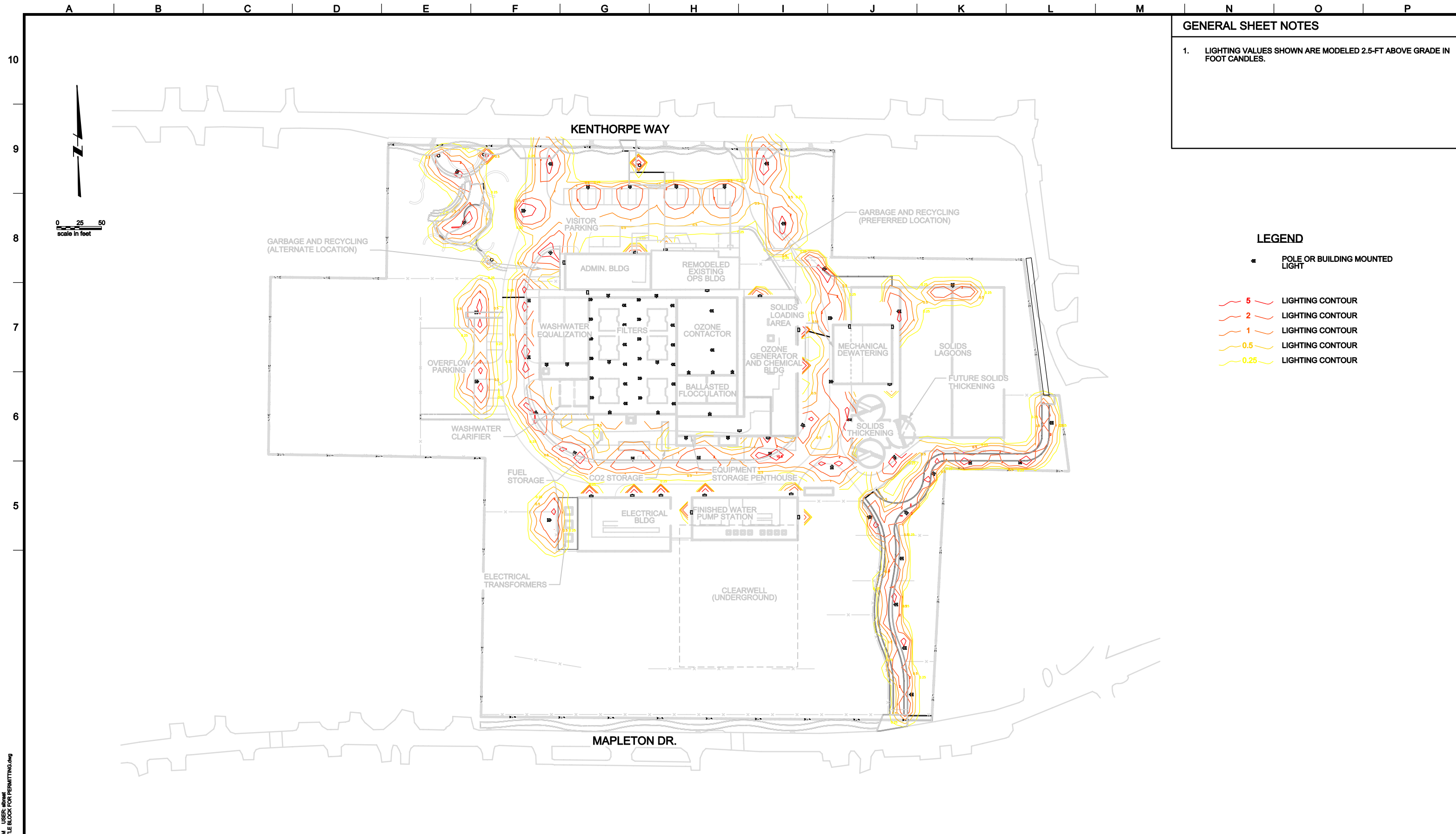
| REVISIONS | | | | |
|-----------|-------------|----|------|------|
| NO. | DESCRIPTION | BY | DATE | APP. |
| | | | | |
| | | | | |
| | | | | |

OWNER:
 CITY OF LAKE OSWEGO
 380 A AVENUE
 LAKE OSWEGO, OR 97034
 PHONE: 503-635-0270



LAKE OSWEGO AND TIGARD WATER TREATMENT PLANT
 DESIGN REVIEW AND CONDITIONAL USE
**FULL-ON LIGHTING PLAN
 OVERVIEW**

| | |
|-----------------------|----------|
| FILENAME | |
| PROJECT NUMBER | |
| SCALE | 1" = 50' |
| DRAWING/FIGURE NUMBER | 5.5 |
| ### OF | |



GENERAL SHEET NOTES

1. LIGHTING VALUES SHOWN ARE MODELED 2.5-FT ABOVE GRADE IN FOOT CANDLES.

- LEGEND**
- POLE OR BUILDING MOUNTED LIGHT
 - 5 LIGHTING CONTOUR
 - 2 LIGHTING CONTOUR
 - 1 LIGHTING CONTOUR
 - 0.5 LIGHTING CONTOUR
 - 0.25 LIGHTING CONTOUR

PLOT DATE: September 10, 2008 - 1:55PM USER: abinat
 FILE: C:\pwworkdir\ms52713864-TITLE BLOCK FOR PERMITTING.dwg



LINE IS 2 INCHES
AT FULL SIZE
(IF NOT 2" - SCALE ACCORDINGLY)

DESIGNED: ###
DRAWN: ###
CHECKED: ###
CHECKED: ###
APPROVED: ###

| REVISIONS | | | | |
|-----------|-------------|----|------|------|
| NO. | DESCRIPTION | BY | DATE | APP. |
| | | | | |
| | | | | |
| | | | | |

OWNER:
 CITY OF LAKE OSWEGO
 380 A AVENUE
 LAKE OSWEGO, OR 97034
 PHONE: 503-635-0270

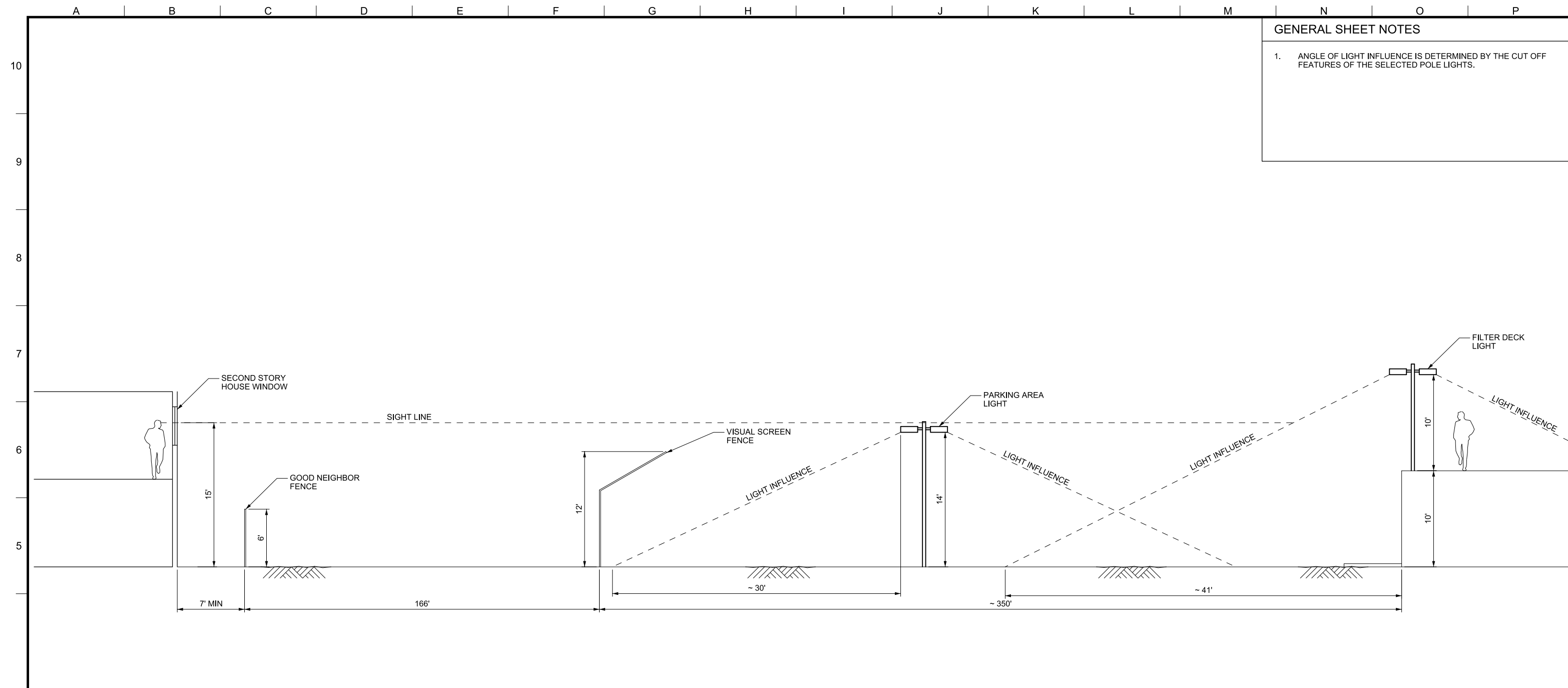


LAKE OSWEGO AND TIGARD WATER TREATMENT PLANT
 DESIGN REVIEW AND CONDITIONAL USE
**NIGHT TIME LIGHTING PLAN
 OVERVIEW**

| | |
|-----------------------|----------|
| FILENAME | |
| PROJECT NUMBER | |
| SCALE | 1" = 50' |
| DRAWING/FIGURE NUMBER | 5.5A |
| ### OF | |

GENERAL SHEET NOTES

1. ANGLE OF LIGHT INFLUENCE IS DETERMINED BY THE CUT OFF FEATURES OF THE SELECTED POLE LIGHTS.



LIGHT INFLUENCE WEST FROM FILTER DECK

PLOT DATE: September 10, 2008 - 1:55PM USER: abraat FILE: C:\pwork\dm529713864.TITLE BLOCK FOR PERMITTING.dwg



LINE IS 2 INCHES AT FULL SIZE (IF NOT 2" - SCALE ACCORDINGLY)

DESIGNED: ####
 DRAWN: ####
 CHECKED: ####
 CHECKED: ####
 APPROVED: ####

| REVISIONS | | | | |
|-----------|-------------|----|--|------|
| REV. | DESCRIPTION | BY | | APP. |
| | | | | |
| | | | | |
| | | | | |
| | | | | |

OWNER:
 CITY OF LAKE OSWEGO
 380 A AVENUE
 LAKE OSWEGO, OR 97034
 PHONE: 503-635-0270



LAKE OSWEGO AND TIGARD WATER TREATMENT PLANT
 DESIGN REVIEW AND CONDITIONAL USE
LIGHTING SECTION

| |
|-----------------------|
| FILENAME |
| PROJECT NUMBER |
| SCALE |
| DRAWING/FIGURE NUMBER |
| 5.5B |
| ### OF |



Safety & Outages Light Fixtures & Poles

KIM Archetype Streetlight

Safety

- [Outdoor Area Lighting](#)
 - [Parking Lot & Yard Lighting](#)
 - [Street Lighting](#)
 - [Light Fixtures & Poles](#)
 - [Order Online](#)
- [Outdoor Safety](#)
- [Electric & Magnetic Fields](#)
- [Electricity 101](#)
- [Home Safety](#)
- [Business Safety](#)
- [Classroom Support](#)
- [Kids Safety Videos](#)

Outages

- [Tree Maintenance](#)
- [Surge Protection](#)
- [Power Troubleshooting](#)



Decorative architectural design in bronze adds a modern touch to major streets, parking lots and other outdoor lighting. Low-glare design preserves night sky beauty.

Illumination pattern



| Lamp Wattage | Initial Light Output | End of Life Light Output | Recommended Mounting Height |
|--------------|----------------------|--------------------------|-----------------------------|
| 250 watt HPS | 27,500 Lumens | 19,250 Lumens | 30 feet |
| 400 watt HPS | 50,000 Lumens | 35,000 Lumens | 40 feet |

Traditional poles installed with this light



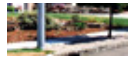
[Bronze fiberglass bracket arm](#)

[Bronze fiberglass mast arm](#)

Additional pole choices for this light



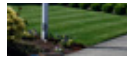
Light Fixtures & Poles: KIM Archetype Streetlight | PGE



[Gray fiberglass direct bury](#)



[Gray fiberglass anchor base](#)



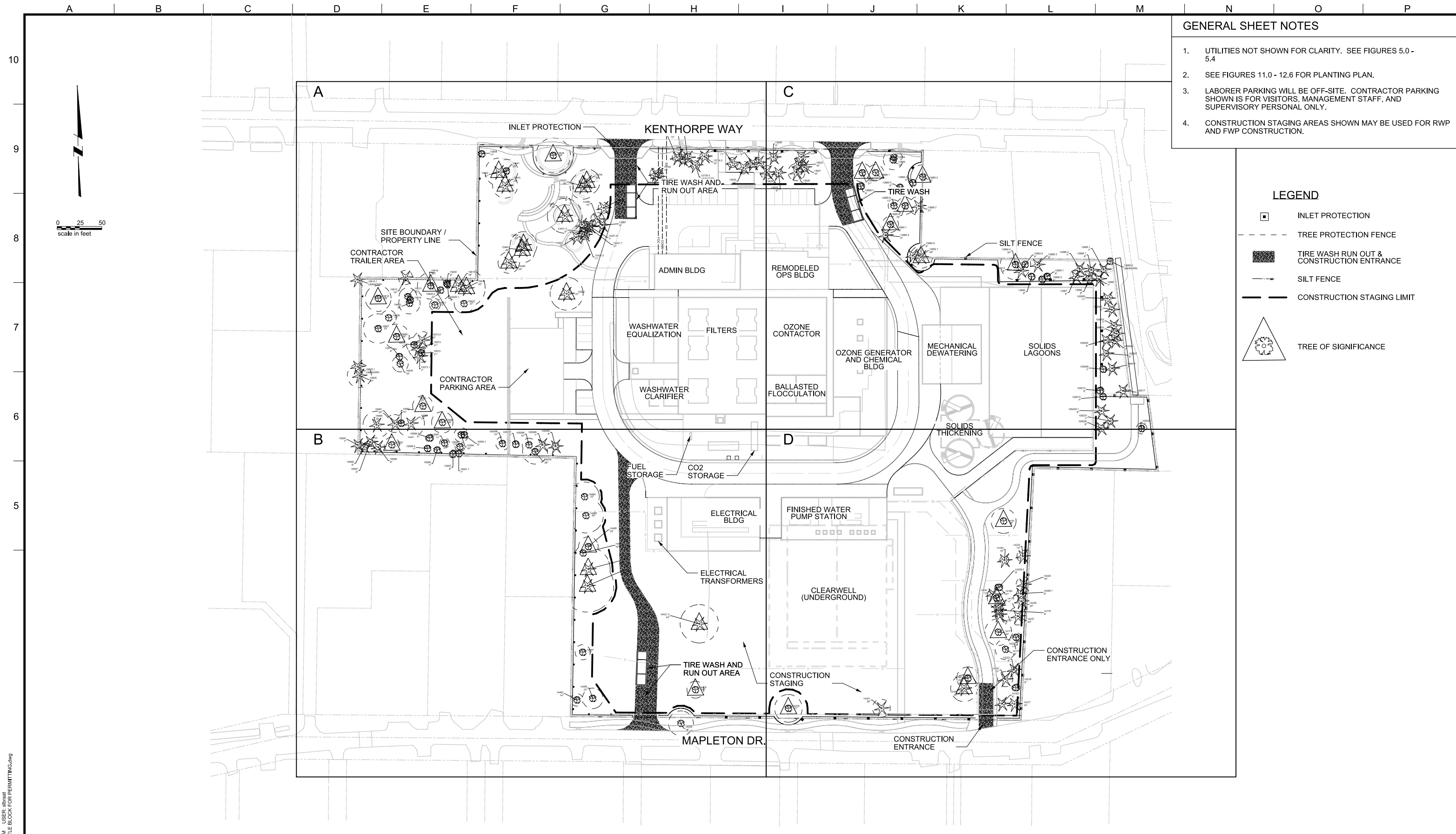
[Aluminum with regular mast arm](#)



[Wood utility with steel upsweep](#)

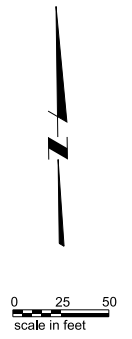
[Contact Us](#) [Careers](#) [Site Map](#) [Privacy](#) [Legal Notices](#) [En Español](#) Reach us by [e-mail](#), [phone](#) or [visit our offices](#).

CSWeb Version: 5.0.0 Server: WP2WTC



- GENERAL SHEET NOTES**
1. UTILITIES NOT SHOWN FOR CLARITY. SEE FIGURES 5.0 - 5.4
 2. SEE FIGURES 11.0 - 12.6 FOR PLANTING PLAN.
 3. LABORER PARKING WILL BE OFF-SITE. CONTRACTOR PARKING SHOWN IS FOR VISITORS, MANAGEMENT STAFF, AND SUPERVISORY PERSONAL ONLY.
 4. CONSTRUCTION STAGING AREAS SHOWN MAY BE USED FOR RWP AND FWP CONSTRUCTION.

- LEGEND**
- INLET PROTECTION
 - TREE PROTECTION FENCE
 - TIRE WASH RUN OUT & CONSTRUCTION ENTRANCE
 - SILT FENCE
 - CONSTRUCTION STAGING LIMIT
 - TREE OF SIGNIFICANCE



PLOT DATE: September 10, 2008 - 1:55PM USER: abraat
 FILE: C:\work\dm5297138564.TITLE BLOCK FOR PERMITTING.dwg



LINE IS 2 INCHES
 AT FULL SIZE
 (IF NOT 2" - SCALE ACCORDINGLY)

DESIGNED: ####
 DRAWN: ####
 CHECKED: ####
 CHECKED: ####
 APPROVED: ####

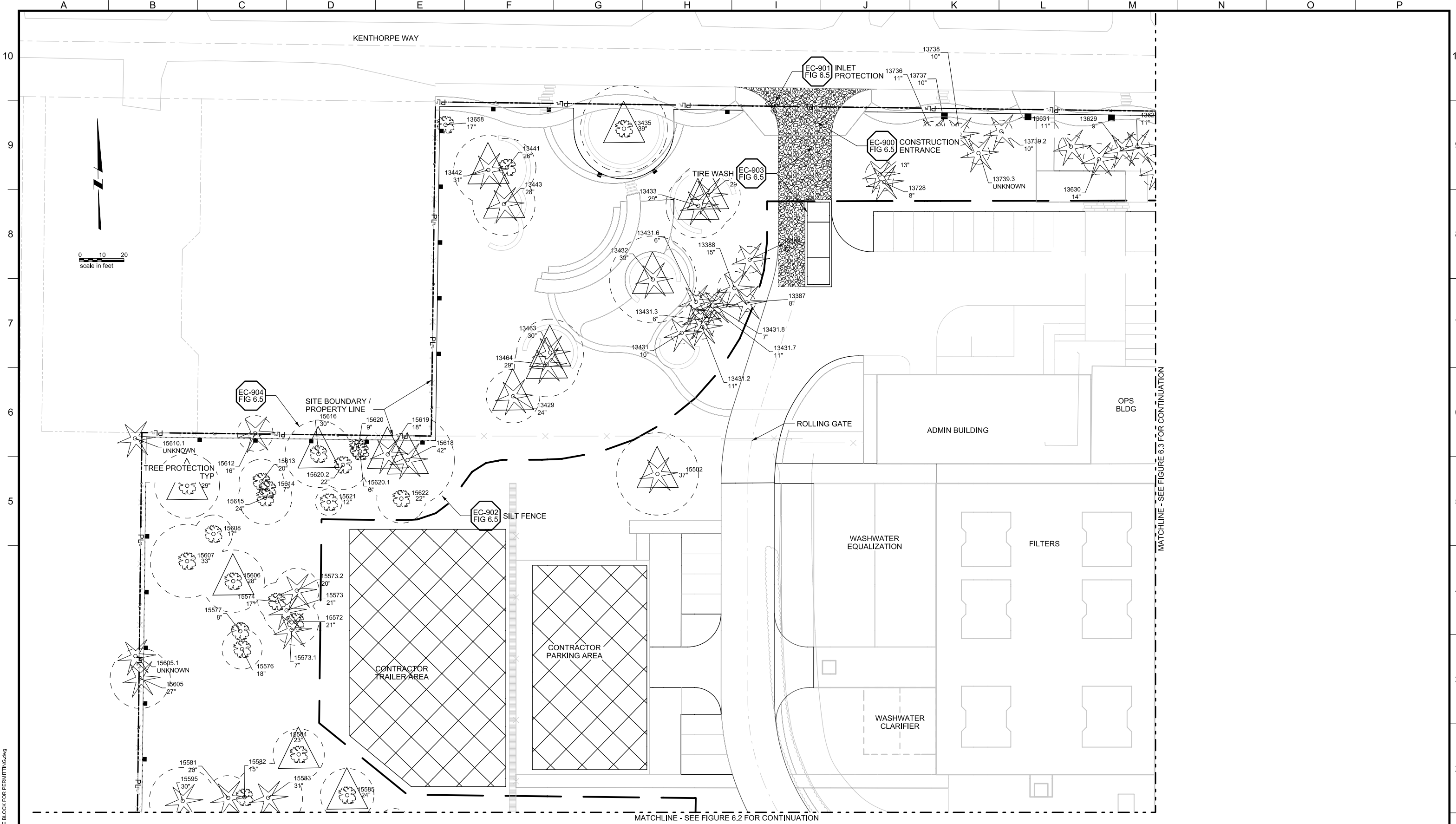
| REVISIONS | | | | |
|-----------|-------------|----|------|------|
| REV. | DESCRIPTION | BY | DATE | APP. |
| | | | | |
| | | | | |
| | | | | |

OWNER:
 CITY OF LAKE OSWEGO
 380 A AVENUE
 LAKE OSWEGO, OR 97034
 PHONE: 503-635-0270



LAKE OSWEGO AND TIGARD WATER TREATMENT PLANT
 DESIGN REVIEW AND CONDITIONAL USE
CONSTRUCTION MANAGEMENT OVERVIEW

| | |
|-----------------------|----------|
| FILENAME | |
| PROJECT NUMBER | |
| SCALE | 1" = 50' |
| DRAWING/FIGURE NUMBER | 6.0 |
| #### OF | |



PLOT DATE: September 10, 2008 - 1:55PM USER: abratat
 FILE: C:\work\dm\5297138564.TITLE BLOCK FOR PERMITTING.dwg



LINE IS 2 INCHES
 AT FULL SIZE
 (IF NOT 2" - SCALE ACCORDINGLY)
 DESIGNED: ####
 DRAWN: ####
 CHECKED: ####
 CHECKED: ####
 APPROVED: ####

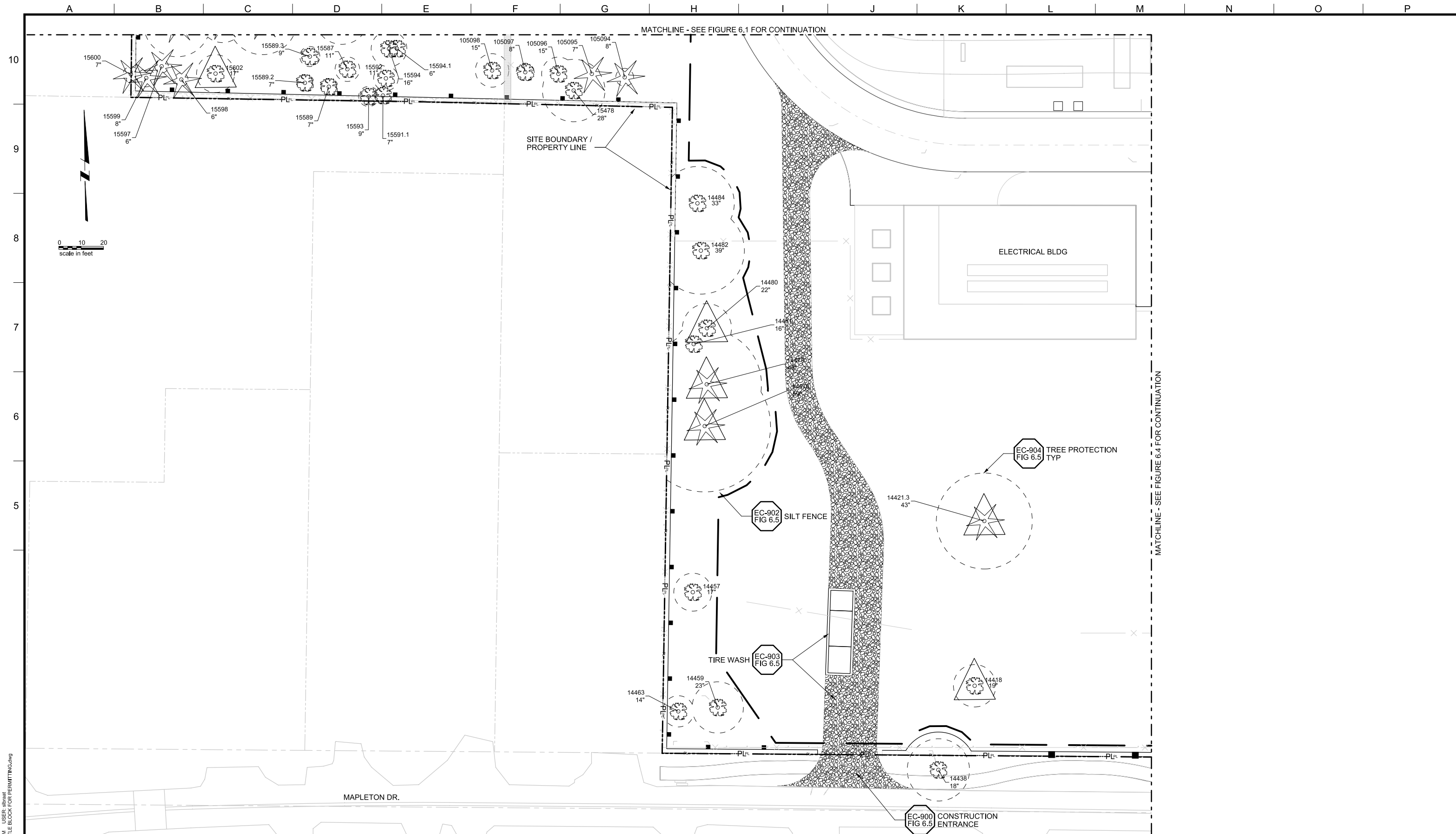
| REVISIONS | | | | |
|-----------|-------------|----|------|--|
| REV. | DESCRIPTION | BY | APP. | |
| | | | | |
| | | | | |
| | | | | |

OWNER:
 CITY OF LAKE OSWEGO
 380 A AVENUE
 LAKE OSWEGO, OR 97034
 PHONE: 503-635-0270



LAKE OSWEGO AND TIGARD WATER TREATMENT PLANT
 DESIGN REVIEW AND CONDITIONAL USE
CONSTRUCTION MANAGEMENT
 AREA A

| | |
|-----------------------|----------|
| FILENAME | |
| PROJECT NUMBER | |
| SCALE | 1" = 20' |
| DRAWING/FIGURE NUMBER | 6.1 |
| ### OF | |



PLOT DATE: September 10, 2008 - 1:55PM USER: abraat
 FILE: C:\work\dirms529713864-TITLE BLOCK FOR PERMITTING.dwg



LINE IS 2 INCHES
 AT FULL SIZE
 (IF NOT 2" - SCALE ACCORDINGLY)
 DESIGNED: ####
 DRAWN: ####
 CHECKED: ####
 CHECKED: ####
 APPROVED: ####

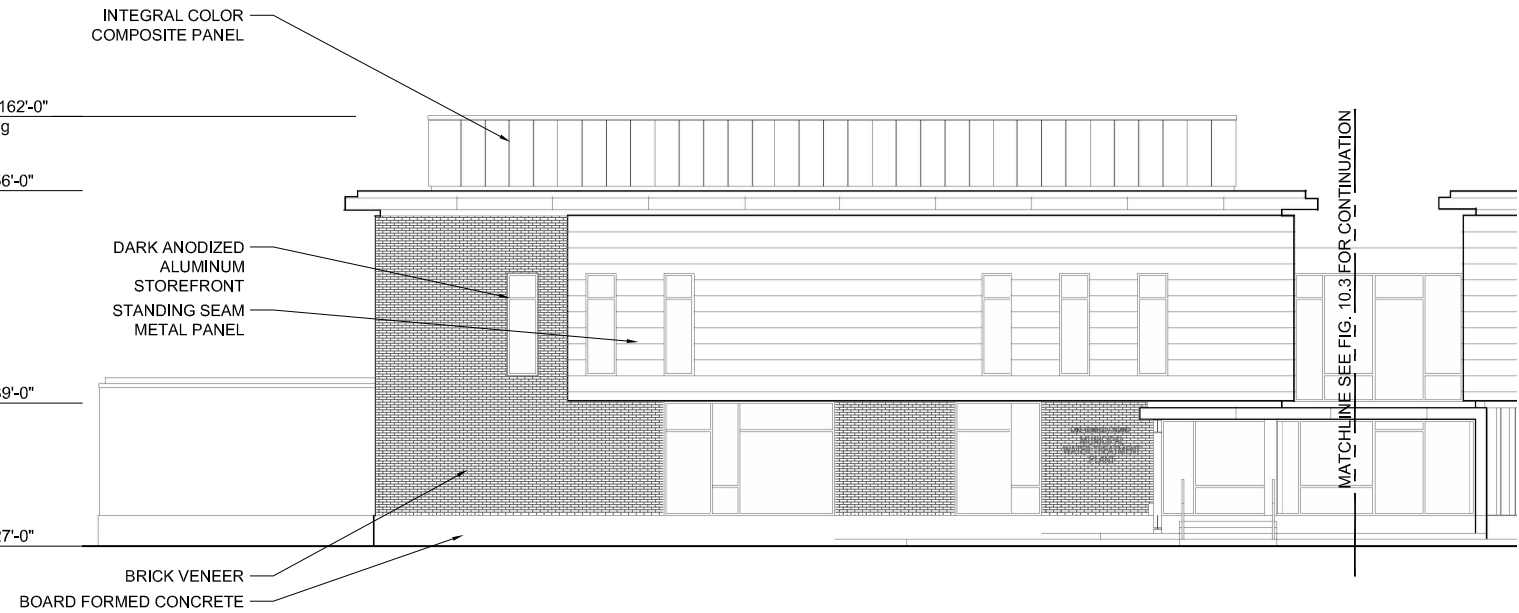
| REVISIONS | | | | |
|-----------|-------------|----|------|------|
| REV. | DESCRIPTION | BY | DATE | APP. |
| | | | | |
| | | | | |
| | | | | |

OWNER:
 CITY OF LAKE OSWEGO
 380 A AVENUE
 LAKE OSWEGO, OR 97034
 PHONE: 503-635-0270



LAKE OSWEGO AND TIGARD WATER TREATMENT PLANT
 DESIGN REVIEW AND CONDITIONAL USE
CONSTRUCTION MANAGEMENT
 AREA B

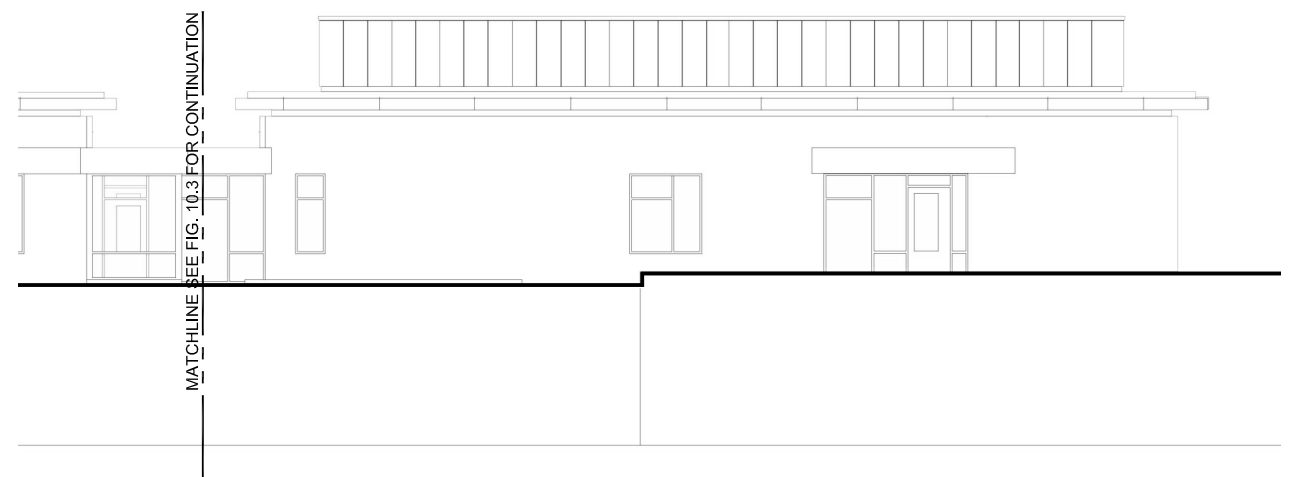
| | |
|-----------------------|----------|
| FILENAME | |
| PROJECT NUMBER | |
| SCALE | 1" = 20' |
| DRAWING/FIGURE NUMBER | 6.2 |
| ### OF | |



NORTH ELEVATION
SCALE: 1/8"=1'-0"



WEST ELEVATION
SCALE: 1/8"=1'-0"



SOUTH ELEVATION
SCALE: 1/8"=1'-0"



LINE IS 2 INCHES
AT FULL SIZE
(IF NOT 2" - SCALE ACCORDINGLY)

DESIGNED: _____
DRAWN: _____
CHECKED: _____
CHECKED: _____
APPROVED: _____

| REVISIONS | | | | |
|-----------|-------------|----|------|--|
| REV. | DESCRIPTION | BY | APP. | |
| | | | | |
| | | | | |
| | | | | |
| | | | | |

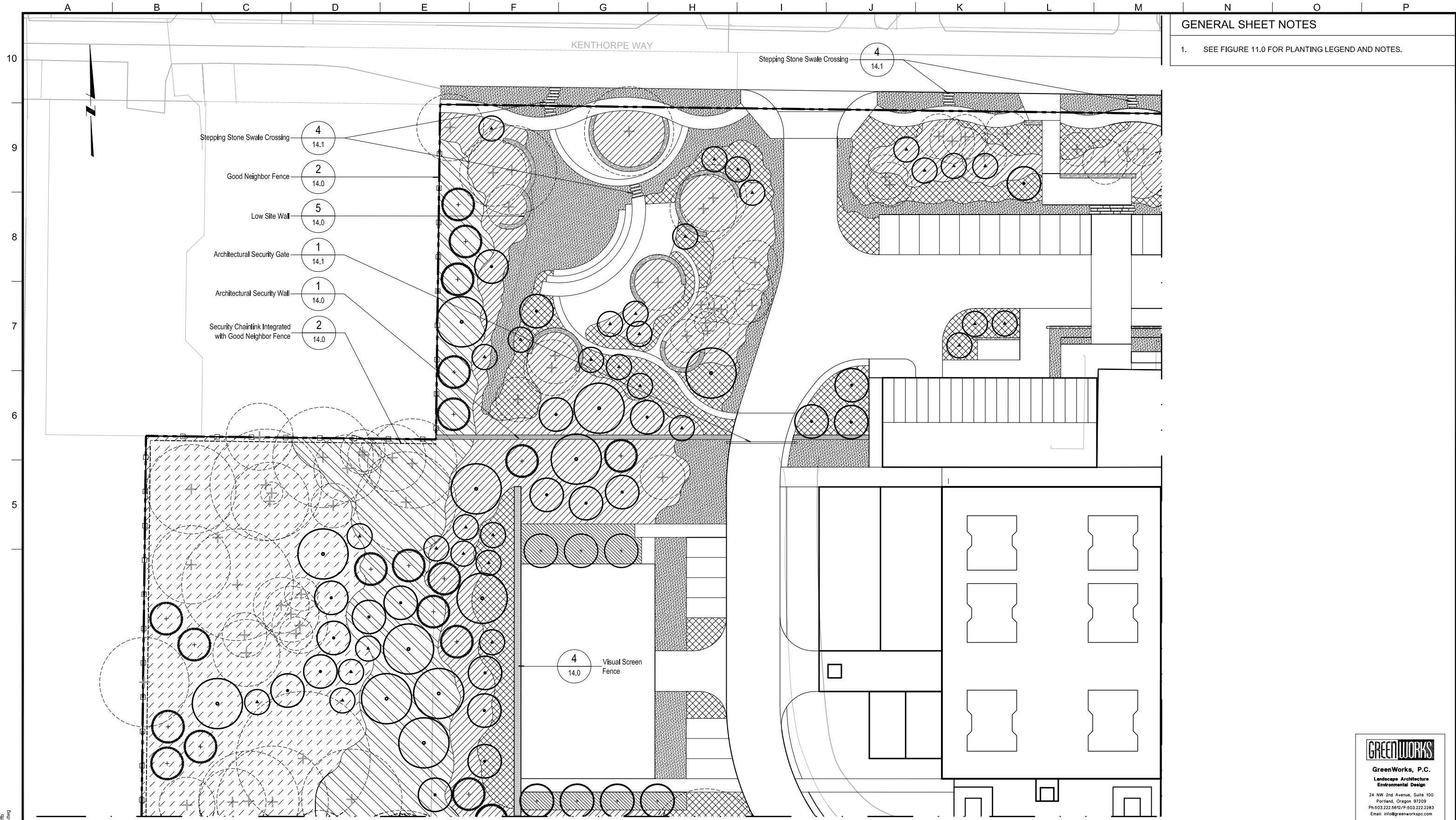
OWNER:
CITY OF LAKE OSWEGO
380 A AVENUE
LAKE OSWEGO, OR 97034
PHONE: 503-635-0270



LAKE OSWEGO AND TIGARD WATER TREATMENT PLANT

DESIGN REVIEW AND CONDITIONAL USE
OPERATIONS BUILDING ELEVATIONS

| | |
|-----------------------|----------|
| FILENAME | |
| PROJECT NUMBER | |
| SCALE | AS SHOWN |
| DRAWING/FIGURE NUMBER | 10.2 |
| OF | |



GENERAL SHEET NOTES
 1. SEE FIGURE 11.0 FOR PLANTING LEGEND AND NOTES.

- Stepping Stone Swale Crossing (4) 14.1
- Good Neighbor Fence (2) 14.0
- Low Site Wall (5) 14.0
- Architectural Security Gate (1) 14.1
- Architectural Security Wall (1) 14.0
- Security Chainlink Integrated with Good Neighbor Fence (2) 14.0

(4) 14.0 Visual Screen Fence

GREENWORKS
 GreenWorks, P.C.
 Landscape Architecture
 Environmental Design
 24 NW 2nd Avenue, Suite 100
 Portland, Oregon 97209
 Ph: 503.222.5612 / F: 503.222.2283
 Email: info@greenworkspc.com

MWH
 806 SW BROADWAY, SUITE 200
 PORTLAND, OREGON 97205

LINE IS 2 INCHES
 AT FULL SIZE
 (IF NOT 2" - SCALE ACCORDINGLY)

DESIGNED: JB
 DRAWN: DD
 CHECKED: JB
 CHECKED: RT
 APPROVED: MF

| REVISIONS | | | | |
|-----------|--|----|------|------|
| REV. | DESCRIPTION | BY | DATE | APP. |
| 1 | 45617RWTP.dwg | | | |
| 2 | LOWTP_Site_MODEL.dwg | | | |
| 3 | 13856-F-TITLE BLOCK FOR PERMITTING.dwg | | | |
| 4 | CH1 LEGO SQUARE.dwg | | | |
| 5 | LOWTP_L_DESIGN_BASE.dwg | | | |
| 6 | LOWTP_L_PLANT_BASE.dwg | | | |
| 7 | LOWTP_L_TREE.dwg | | | |
| 8 | LOWTP_fence_model.dwg | | | |
| 9 | LOWTP_L_DESIGN_BASE_cad_2004.dwg | | | |
| 10 | W01424-BORDER.dwg | | | |

OWNER:
 CITY OF LAKE OSWEGO
 380 A AVENUE
 LAKE OSWEGO, OR 97034
 PHONE: 503-635-0270

**Lake Oswego · Tigard
 Water Partnership**
 sharing water · connecting communities

LAKE OSWEGO AND TIGARD WATER TREATMENT PLANT
 DESIGN REVIEW AND CONDITIONAL USE
**PLANTING PLAN
 AREA A**

| | |
|-----------------------|----------|
| FILENAME | |
| PROJECT NUMBER | |
| SCALE | 1" = 20' |
| DRAWING/FIGURE NUMBER | 12.1 |
| 48 OF | |

PLOT DATE: April 14, 2012 - 2:59PM USER: jrb
 FILE: C:\work\lams\1303\LOWTP-AL-12.dwg

GENERAL SHEET NOTES

- SEE FIGURE 11.0 FOR PLANTING LEGEND AND NOTES.



PLOT DATE: April 14, 2012, 3:31 PM USER: jmb
 FILE: C:\work\lambert\1303\LOWTP-BL-12.dwg



LINE IS 2 INCHES
 AT FULL SIZE
 (IF NOT 2" - SCALE ACCORDINGLY)
 DESIGNED: JB
 DRAWN: DD
 CHECKED: JB
 CHECKED: RT
 APPROVED: MF

| REVISIONS | | BY | APP. |
|-----------|--|----|------|
| REV 1 | 45617RWTP.dwg | | |
| REV 2 | LOWTP_Site_MODEL.dwg | | |
| REV 3 | 13856-F-TITLE BLOCK FOR PERMITTING.dwg | | |
| REV 4 | LOWTP_L_DESIGN_BASE.dwg | | |
| REV 5 | LOWTP_L_PLANT_BASE.dwg | | |
| REV 6 | 45617RWTP2-TREE INVENTORY-BC-PTNOS.dwg | | |
| REV 7 | LOWTP_L_TREE.dwg | | |
| REV 8 | LOWTP_fence_model.dwg | | |
| REV 9 | LOWTP_L_DESIGN_BASE_cad_2004.dwg | | |
| REV 10 | W01424-BORDER.dwg | | |

OWNER:
 CITY OF LAKE OSWEGO
 380 A AVENUE
 LAKE OSWEGO, OR 97034
 PHONE: 503-635-0270



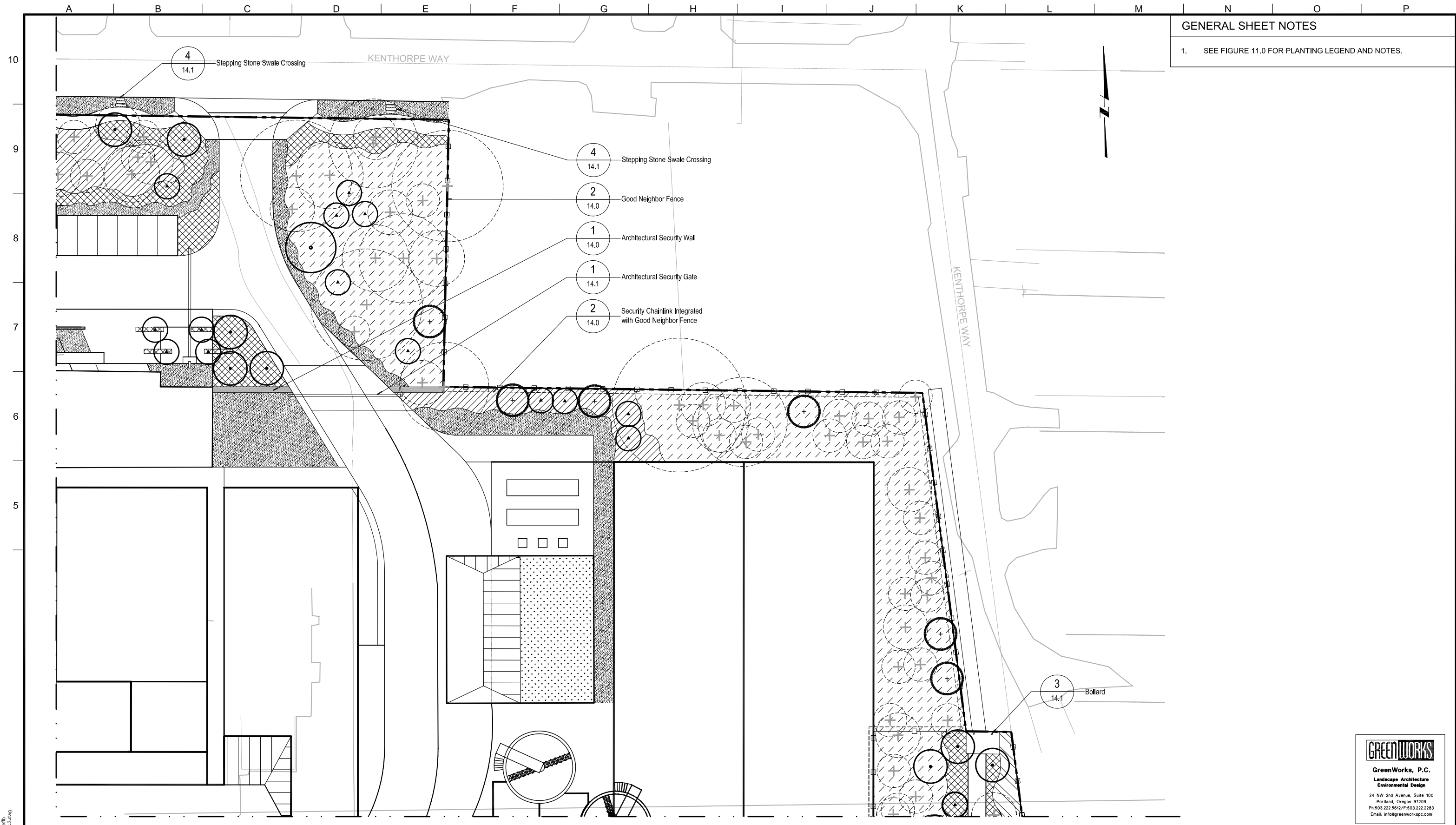
LAKE OSWEGO AND TIGARD WATER TREATMENT PLANT
 DESIGN REVIEW AND CONDITIONAL USE
PLANTING PLAN
 AREA B



| | |
|-----------------------|----------|
| FILENAME | |
| PROJECT NUMBER | |
| SCALE | 1" = 20' |
| DRAWING/FIGURE NUMBER | 12.2 |
| 49 OF | |

GENERAL SHEET NOTES

- SEE FIGURE 11.0 FOR PLANTING LEGEND AND NOTES.



GREENWORKS
 GreenWorks, P.C.
 Landscape Architecture
 Environmental Design
 24 NW 2nd Avenue, Suite 100
 Portland, Oregon 97209
 Ph: 503.222.5612 / F: 503.222.2283
 Email: info@greenworkspc.com

MWH
 806 SW BROADWAY, SUITE 200
 PORTLAND, OREGON 97205

LINE IS 2 INCHES
 AT FULL SIZE
 (IF NOT 2" - SCALE ACCORDINGLY)

DESIGNED: JB
 DRAWN: DD
 CHECKED: JB
 CHECKED: RT
 APPROVED: MF

| REV | DATE | DESCRIPTION | BY | APP. |
|-----|--------|---------------------------------------|----|------|
| 1 | 4/5/17 | LRWTP.dwg | | |
| 2 | | LOWTP_Site_MODEL.dwg | | |
| 3 | | 138556-TITLE BLOCK FOR PERMITTING.dwg | | |
| 4 | | GW14SQ-SQUARE.dwg | | |
| 5 | | LOWTP_L_DESIGN_BASE.dwg | | |
| 6 | | LOWTP_L_PLANT_BASE.dwg | | |
| 7 | | LOWTP_L_TREE.dwg | | |
| 8 | | LOWTP_fence_model.dwg | | |
| 9 | | LOWTP_L_DESIGN_BASE_cad_2004.dwg | | |
| 10 | | W01424-BORDER.dwg | | |

OWNER:
 CITY OF LAKE OSWEGO
 380 A AVENUE
 LAKE OSWEGO, OR 97034
 PHONE: 503-635-0270



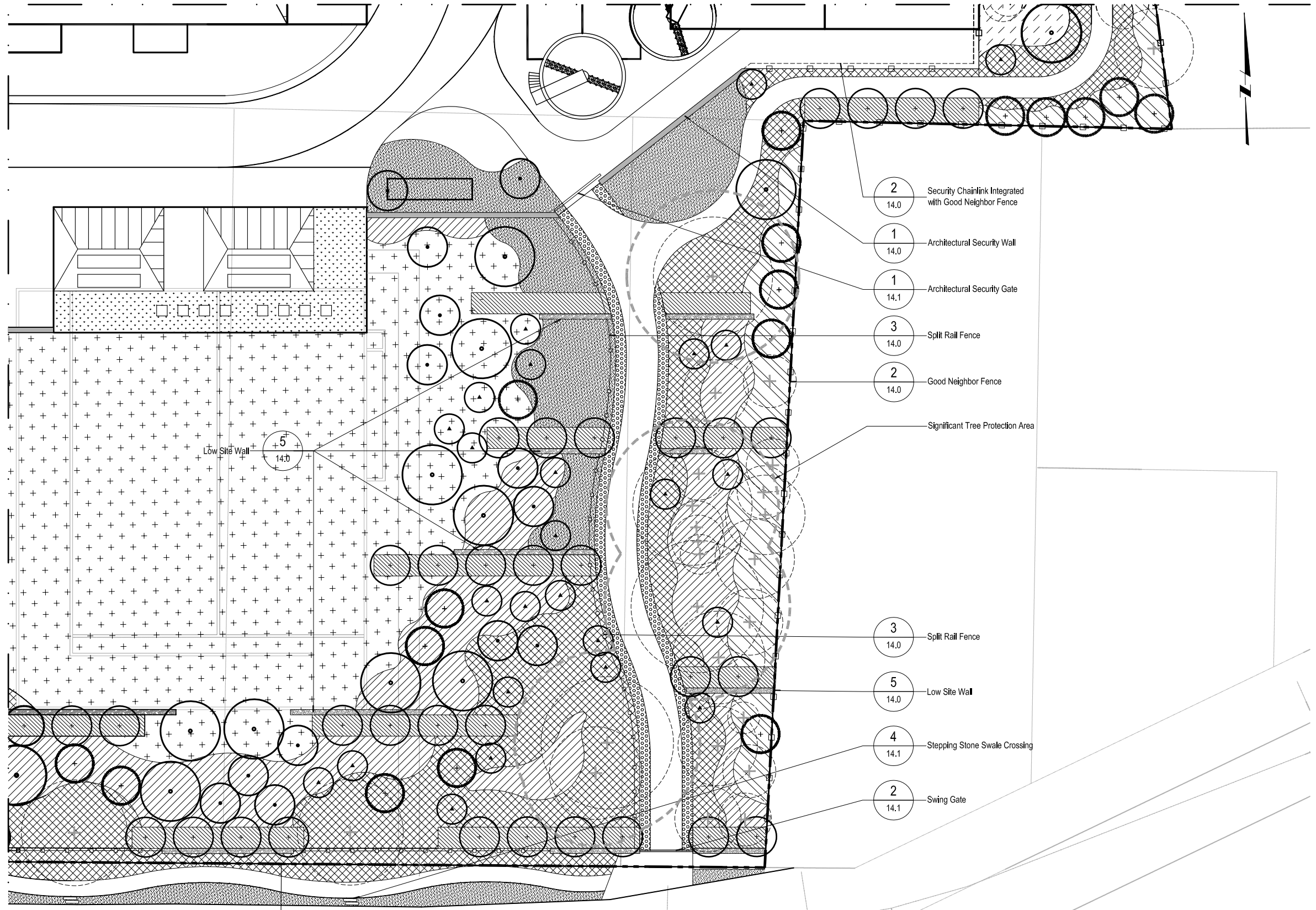
LAKE OSWEGO AND TIGARD WATER TREATMENT PLANT
 DESIGN REVIEW AND CONDITIONAL USE
PLANTING PLAN
 AREA C

| | |
|-----------------------|----------|
| FILENAME | |
| PROJECT NUMBER | |
| SCALE | 1" = 20' |
| DRAWING/FIGURE NUMBER | 12.3 |
| | 50 OF |

PLOT DATE: April 14, 2017, 3:44PM USER: jrb
 FILE: C:\work\lms\1303\LOWTP-C-12.3.dwg

GENERAL SHEET NOTES

- SEE FIGURE 11.0 FOR PLANTING LEGEND AND NOTES.



MAPLETON DRIVE



LINE IS 2 INCHES
AT FULL SIZE
(IF NOT 2" - SCALE ACCORDINGLY)

DESIGNED: JB
DRAWN: DD
CHECKED: JB
CHECKED: RT
APPROVED: MF

| NO. | DATE | DESCRIPTION | BY | APP. |
|-----|------|---------------------------------------|----|------|
| 1 | | 166171RWTP.dwg | | |
| 2 | | 166171RWTP_Site_MODEL.dwg | | |
| 3 | | 135599-TITLE BLOCK FOR PERMITTING.dwg | | |
| 4 | | GW_LDGO SQUARE.dwg | | |
| 5 | | LOWTP_L DESIGN_BASE.dwg | | |
| 6 | | LOWTP_L PLANT_BASE.dwg | | |
| 7 | | LOWTP_L TREE.dwg | | |
| 8 | | LOWTP_fence_model.dwg | | |
| 9 | | LOWTP_L DESIGN_BASE_cad_2004.dwg | | |
| 10 | | W01424-BORDER.dwg | | |

OWNER:
CITY OF LAKE OSWEGO
380 A AVENUE
LAKE OSWEGO, OR 97034
PHONE: 503-635-0270

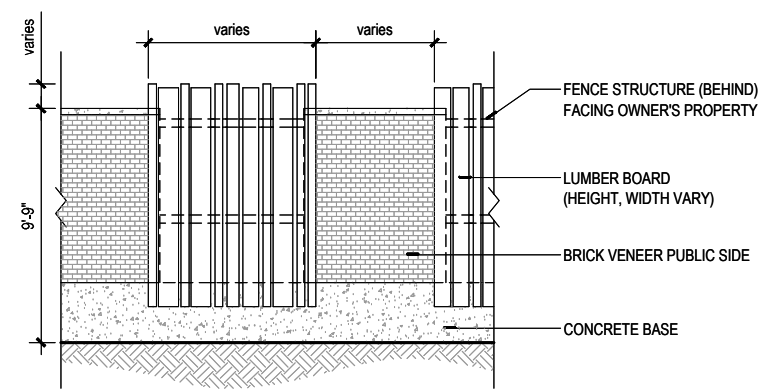


LAKE OSWEGO AND TIGARD WATER TREATMENT PLANT
DESIGN REVIEW AND CONDITIONAL USE
PLANTING PLAN
AREA D

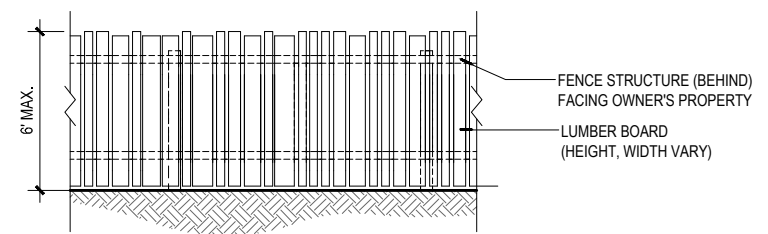
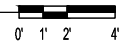


| |
|--------------------------------------|
| FILENAME |
| PROJECT NUMBER |
| SCALE 1" = 20' |
| DRAWING/FIGURE NUMBER 12.4 |
| 51 OF |

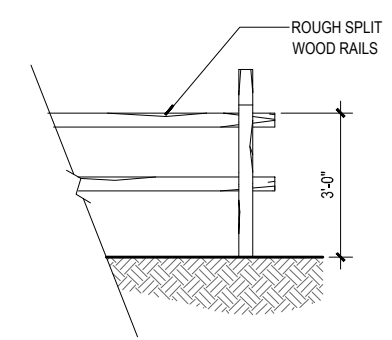
PLOT DATE: April 14, 2019 2:56 PM USER: jmh
FILE: C:\pwworkspace\135599\GWTP-D-12.4.dwg



1 ARCHITECTURAL SECURITY WALL
SECTION/ELEVATION FROM ADJOINING PROPERTY



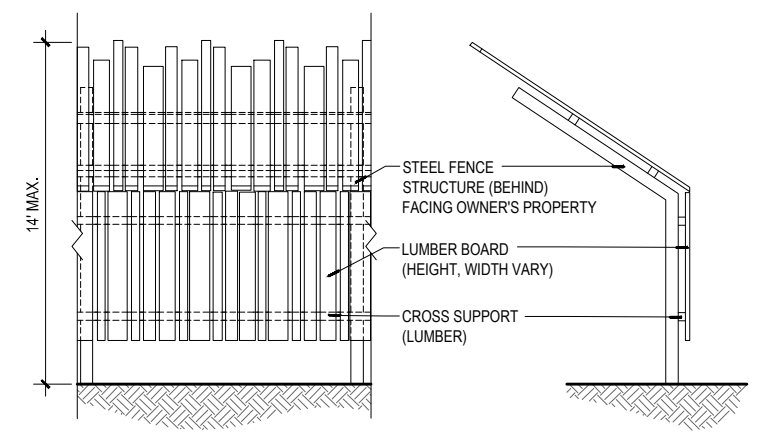
2 GOOD NEIGHBOR FENCE
SECTION/ELEVATION FROM ADJOINING PROPERTY



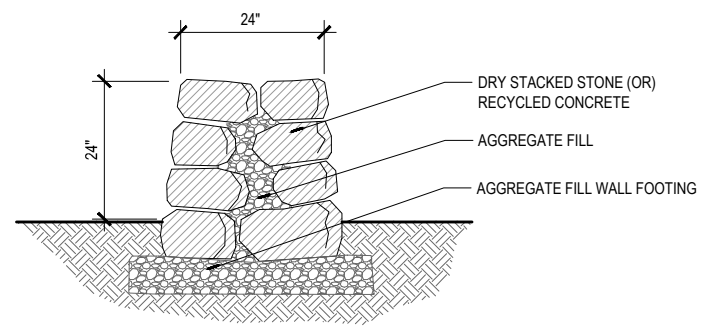
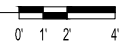
3 SPLIT RAIL FENCE
SECTION/ELEVATION



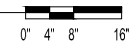
NOTES:
1. SECURITY CHAINLINK TO BE INTEGRATED INTO GOOD NEIGHBOR FENCE CONSTRUCTION AROUND CENTRAL PLANT PROPERTY AS SHOWN. SEE LANDSCAPE DRAWINGS 12.1-12.4.



4 VISUAL SCREEN FENCE
SECTION/ELEVATION FROM ADJOINING PROPERTY



5 LOW SITE WALL
SECTION



NOTES:
1. WALL FOOTING TO BE ADJUSTED TO PROTECT EXISTING TREE ROOTS WHERE NECESSARY



VISUAL SCREEN FENCE - VIEW FROM ADJOINING PROPERTY (SEE DETAIL 4, THIS SHEET)



GOOD NEIGHBOR FENCE - VIEW FROM OWNER'S SIDE (SEE DETAIL 2, THIS SHEET)

6 FENCING ILLUSTRATIONS
PERSPECTIVE

NOT TO SCALE

PLOT DATE: April 4, 2012 1:28PM USER: jhb FILE: C:\pwworkdir\181303\AC\DWG\14.0.dwg



LINE IS 2 INCHES AT FULL SIZE (IF NOT 2" - SCALE ACCORDINGLY)

DESIGNED: JB
DRAWN: DS
CHECKED: JB
CHECKED: RT
APPROVED: MF

| NO. | DESCRIPTION | BY | APP. |
|-----|---------------------------------|----|------|
| 1 | TITLE BLOCK FOR PERMITS DWG | | |
| 2 | LOGO SQUARE DWG | | |
| 3 | DET. FENCE_ARCHSECURITYWALL.DWG | | |
| 4 | DET. FENCE_GOODNEIGHBOR.DWG | | |
| 5 | DET. FENCE_SPLITRAIL.DWG | | |
| 6 | DET. FENCE_VISUALSCREEN.DWG | | |
| 7 | 04880 STONE WALL DRY.dwg | | |
| 8 | DET. FENCE_RENDERINGS.dwg | | |
| 9 | W01424-BORDER.dwg | | |

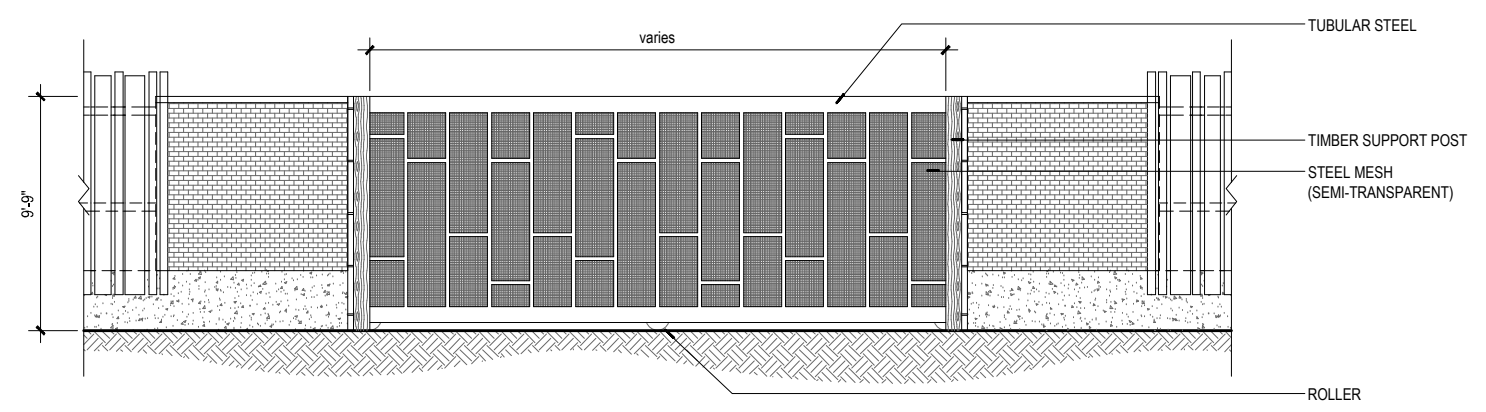
OWNER:
CITY OF LAKE OSWEGO
380 A AVENUE
LAKE OSWEGO, OR 97034
PHONE: 503-635-0270



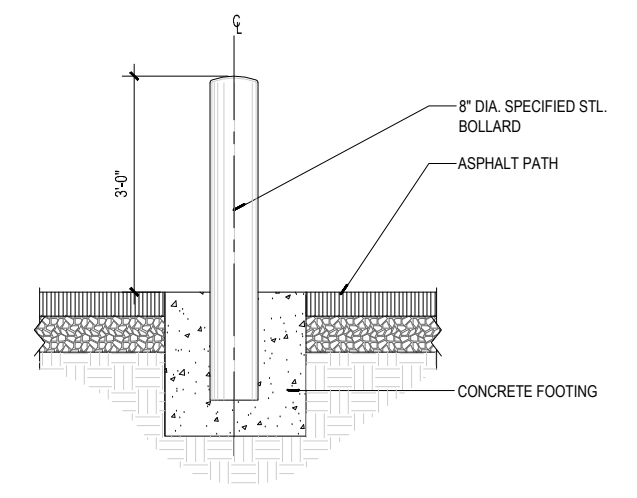
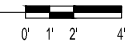
LAKE OSWEGO AND TIGARD WATER TREATMENT PLANT
DESIGN REVIEW AND CONDITIONAL USE
HARDSCAPE & MATERIALS PLAN
DETAILS I
FENCES & WALLS



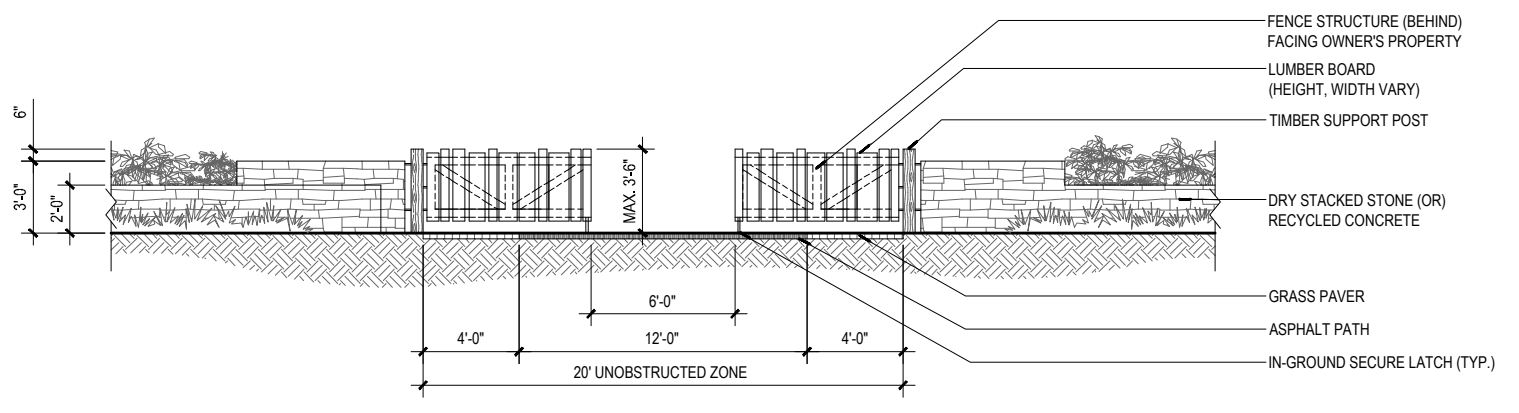
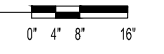
| | |
|-----------------------|--------|
| FILENAME | |
| PROJECT NUMBER | |
| SCALE | varies |
| DRAWING/FIGURE NUMBER | 14.0 |
| | 52 OF |



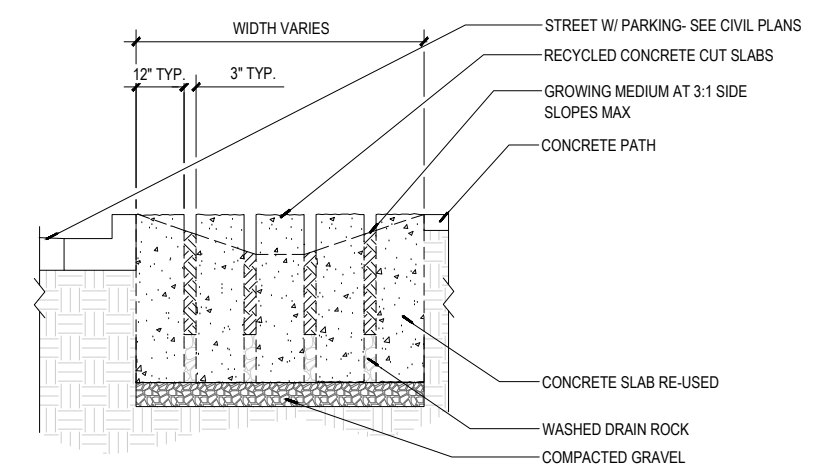
1 ARCHITECTURAL SECURITY GATE
SECTION/ELEVATION



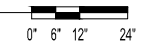
3 BOLLARD
SECTION



2 SWING GATE
SECTION/ELEVATION FROM MAPLETON DRIVE



4 STEPPING STONE SWALE CROSSING
SECTION



PLOT DATE: April 4, 2012 - 12:51 PM USER: jrb
FILE: C:\pwworkdir\1303\ALOW\PL-14.1.dwg



LINE IS 2 INCHES
AT FULL SIZE
(IF NOT 2" - SCALE ACCORDINGLY)

DESIGNED: JB
DRAWN: DS
CHECKED: JB
CHECKED: RT
APPROVED: MF

| NO. | DESCRIPTION | BY | APP. |
|-----|--------------------------------|----|------|
| 1 | TITLE BLOCK FOR PERMITTING.dwg | | |
| 2 | SW LOGO SQUARE.dwg | | |
| 3 | DET1_GATE_SWINGGATE.dwg | | |
| 4 | DET1_GATE_ARCSECURITYGATE.dwg | | |
| 5 | DET1_CONC_WALK_SWALE.dwg | | |
| 6 | DET1_BOLLARD.dwg | | |
| 7 | W01424-BORDER.dwg | | |

OWNER:
CITY OF LAKE OSWEGO
380 A AVENUE
LAKE OSWEGO, OR 97034
PHONE: 503-635-0270



LAKE OSWEGO AND TIGARD WATER TREATMENT PLANT
DESIGN REVIEW AND CONDITIONAL USE
HARDSCAPE & MATERIALS PLAN
DETAILS II



| | |
|-----------------------|-------------|
| FILENAME | |
| PROJECT NUMBER | |
| SCALE | varies |
| DRAWING/FIGURE NUMBER | 14.1 |
| | 52 OF |

**City of Lake Oswego/Tigard Water Partnership
Water Treatment Plant Expansion Project
Land Use Permit – Construction Management Plan
Amended March 29, 2012
(Originally Submitted on January 12, 2012)**

1.0 Purpose

This document describes the Construction Management Plan (CMP) specific to the Water Treatment Plant (WTP) Expansion as required by the City of West Linn Land Use Application; all figures cited in this plan are included in Section 21 of the Land Use Application Packet.

2.0 Project Overview

The existing WTP, originally constructed in 1967 to treat up to 10 million gallons per day (mgd) of water from the Clackamas River, was expanded in 1980 to its current treatment capacity of 16 mgd. In 1996, pursuant to conditional use and design review approvals, the WTP was upgraded to address neighborhood concerns regarding use of chlorine gas for water disinfection and to respond to more stringent water treatment regulations promulgated under the federal Safe Drinking Water Act (SDWA). Each prior expansion or upgrade of the WTP was determined by the City of West Linn to satisfy all conditional use and design review criteria and thus was allowed to proceed. For this current proposal, the WTP will be expanded to 38 mgd to replace obsolete, unreliable supply infrastructure and provide additional supply capacity for the next 50 plus years to satisfy current and long term water supply needs of Lake Oswego and the City of Tigard. Throughout the 32-month construction period, the existing WTP must continue producing safe drinking water in adequate quantity for City residents and wholesale customers. This objective will determine construction sequencing, duration, and work hours, and is the imperative upon which this construction management plan is developed.

3.0 Construction Schedule

The schedule for construction activities and associated durations is subject to local land use approvals. Assuming land use approval is received within 120 calendar days from notice of a technically complete application, activity start and anticipated durations are summarized below:

- Pre-Construction/Site Preparation Activities (3 months): March 2013 – May 2013
- Major Construction Activities (26 months): June 2013 – July 2015
- Post-Construction/Finish Work Activities (3 months): August 2015 – October 2015

Activities associated with this proposed CMP and as generally described above, are further detailed in the following subsections.

3.1 Pre-Construction/Site Preparation Activities

Prior to commencement of major construction activities, the following will be completed:

- Submittal for review and approval of a Traffic Control and Management Plan to the City of West Linn Engineering Department. This plan will include haul routes and details for establishment of temporary traffic control changes and signage in compliance with City requirements and the Manual of Uniform Traffic Control Devices;
- Installation of tree protection and site security fencing as shown in the approved application;
- Installation of erosion control best management practices as shown in the approved application; the applicant will submit a copy of an approved 1200-C permit to the City as evidence of compliance with Oregon Department of Environmental Quality regulations for construction site erosion/sediment control requirements;
- Establishment of Contractor and key Sub-contractor on-site construction offices, materials laydown and storage areas on property owned by Lake Oswego.
- Establishment of offsite parking areas. Applicant will furnish West Linn engineering staff with locations of offsite parking areas for construction parking.
- Existing trees authorized for removal by West Linn pursuant to the Final Conclusions and Order for the WTP application will be removed from the construction site.
- A digital video record to document existing conditions within the public right of way abutting the project site. This record will establish the preconstruction condition of visible surface improvements and conditions within the public rights of way that abut the property boundary's of the WTP site. A copy of this digital record will be provided to the City upon request.
- A communications plan will be developed that includes detailed information of communication means, methods, schedules, and key contacts for the project. A copy of this plan will be provided to the West Linn Public Works Department, Chairs of each Neighborhood Association within West Linn and posted to the project website.
- Project signage: Project signage will be placed strategically around the active work site and at offsite locations as may be approved by the City of West Linn Public Works Department as an element of the Traffic Control and Management Plan and Communications Plan. Emergency contact information will be provided on such signage.

3.2 Major Construction Activities

Construction activities will include:

- Establishing construction survey control monuments

- Conduct preliminary site investigations
- Site preparation
- Demolition of existing facilities
- Excavation
- Construction, including:
 - Civil Works – Earthwork, buried utilities and roadways
 - Structural/Architectural Works – Concrete and steel frame building construction
 - Mechanical Works – Including plumbing and HVAC
 - Electrical and Instrumentation – Including primary and secondary site power
 - Offsite frontage improvements to include half-street improvements comprising pavement restoration, surface water quality improvements, new pedestrian facilities and coordination of non-project related public improvements with the City of West Linn Public Works Department.
- Landscape, trail and final treatment plant road frontage work

Construction hours of work will be as allowed by the City of West Linn and will occur as follows:

Monday through Friday 7 a.m. to 7 p.m.

Saturday and Sunday 9 a.m. to 5 p.m.

Because the work will require connection to active water treatment facilities, temporary interruptions to normal water treatment plant operating schedules will be required. To minimize the frequency and duration of plant outages, work outside allowed work hours as noted above will be required. Not less than seven (7) days advance notice to the City Public Works Department, City Manager and Chair of the Robinwood Neighborhood Association will be provided prior to work outside allowed work hours. Said notice will include justification for work outside allowed work hours, beginning and end dates, and any information unique to the specific activities.

3.3 Post-Construction Activities

After major construction activities are complete, the following activities will be initiated and completed:

- Final site grading;
- Site mitigation plantings and landscaping;
- Removal of temporary site construction fencing and placement of final site fencing;

- Removal of erosion control devices;
- Removal of tree protection fencing;
- Demobilization of construction offices and contractor equipment;
- Restoration of offsite parking, staging and storage areas as necessary;
- Restoration of damaged streets to City of West Linn standards.

4.0 Site Management

4.1 Construction Staging and Stockpiling

Construction staging and stockpile areas will be located within designated disturbance areas as shown in Section 21, Figure 6.0 of the Land-Use Application. Several types of stockpiles are expected: general excavation material, aggregates, engineered backfill, and topsoil. Storage of stockpiled materials on site will reduce the need to haul materials off-site for storage and haul back on site later. Stockpiles will be managed to control dust and runoff.

As much as possible, the plan minimizes the space requirements for construction-related activities by compressing and consolidating lay-down and work areas, and avoiding impacts to significant trees.

4.2 Construction Waste Management

The Construction Contractor will dispose of all on-site waste. These materials may include concrete/rebar, dirt, rocks, asphalt and other materials from demolition of the existing facilities, as well as field office and on-site construction personnel related waste. Containers and layout will be included in the staging areas shown in Section 21, Figure 6.0 of the Land-Use drawing set.

4.3 Hazardous Material

Only materials, directly related to construction activities, will be permitted on site. These materials will include but not be limited to diesel fuel, hydraulic fluids, and paint, in consumer quantities allowed by regulations. Use, transport, and storage of any such materials will be minimized and quantities will not exceed consumer levels (intended for retail sale). On-site fuel transfer will be limited to designated construction staging areas and construction equipment will be stored in these staging areas overnight. Typically, the contractor will not store fuel, oil, or other hazardous materials on site, but rather will bring fuel to the site via maintenance vehicles on a daily basis.

4.4 Sanitation and Litter Facilities

The Contractor will be responsible for providing portable sanitation facilities for construction personnel for the duration of the construction project. The Contractor will also furnish and utilize suitable receptacles for waste and recyclables and ensure that all garbage is removed from the site on a weekly basis.

5.0 Construction Impacts

5.1 Noise

Construction-related noise will meet local noise ordinances for construction work.

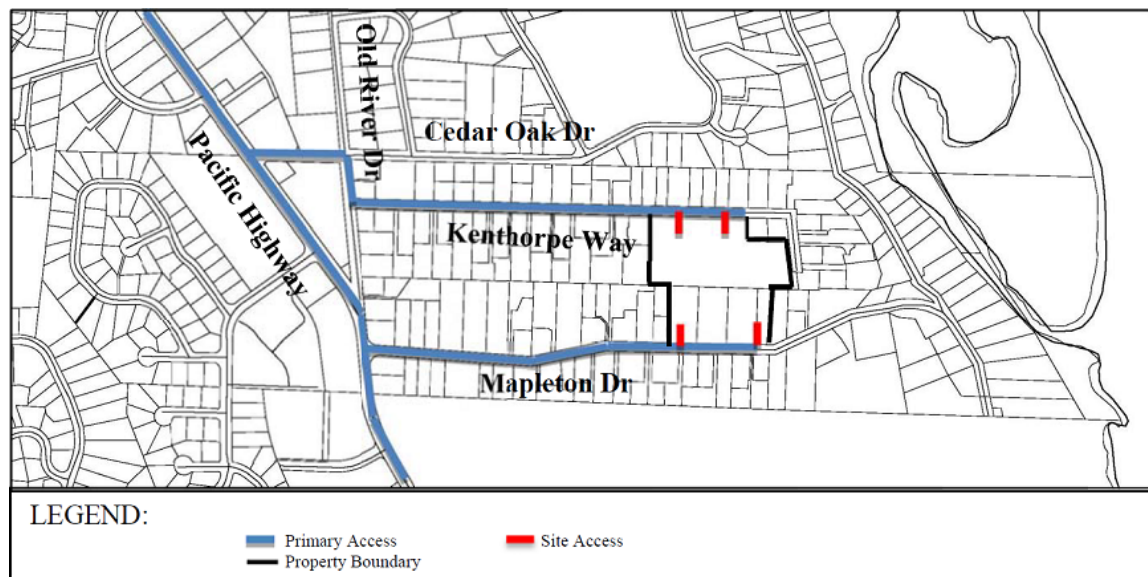
5.2 Traffic

Construction traffic to and from the project site will ebb and flow throughout construction and will not be equally apportioned to the Mapleton Drive and Kenthorpe Way corridors depending upon any particular sequence of work. Regardless, access to private properties throughout the construction period will be maintained with few exceptions. When the need for temporary interruptions to normal access to private properties are identified, advance notice will be provided to affected property owners in accordance with the approved traffic control and management plan and communications plan (see Section 3.1, above).

Figure 1 summarizes the primary construction access routes for the project. As shown in the Figure, there are two primary access routes to the project site:

1. Pacific Highway (Highway 43) to Cedar Oak Dr. to River Road Dr. to S. Kenthorpe Way
2. Pacific Highway (Highway 43) to Mapleton Dr.

Figure 1: Primary Construction Access Routes



Significant Trees to be removed (Amended April 5, 2012)

The West Linn Arborist determined that there are 41 significant trees on site. The proposal will remove up to six significant trees leaving 35 (85.4%) of the significant trees on site and protected. Efforts will be made to protect and, if possible, save trees these significant trees, as described below.

| Inventory Number | Common Name | Dbh <i>inches</i> | Reason for removal |
|-------------------------|--------------------|------------------------------|--|
| 1 13960 | Norway Maple | 21 | The site design collapses the processing facilities into the center of the site and the required bi-directional truck route encircles the processing facilities. Consequently, there is insufficient turning radius for truck to enter or exit the processing plant unless one tree is removed at the bend of the driveway. |
| 2 14245 | Oregon White Oak | 20 | The site design incorporates a pedestrian walkway and screening fence at this site. In addition, plant front end loaders must move from the settling ponds to the west. To accommodate the pedestrian and on-site vehicle movement this tree must be removed. |
| 3 14252 | Oregon White Oak | 30 | The 30-foot deep clearwell will be located immediately to the west of this tree. Consequently, because of the need to move equipment around the excavation and the need to shore up the walls of the clearwell, the Lake Oswego Arborist determined that it is unlikely that this tree will survive the construction activity. <u>During final design applicant will investigate measures to protect these trees using standard tree protection techniques (standard root and foliage protection methods), and minor shoring (up to three feet below existing ground surface adjacent to project excavations) to retain in-situ soils in tree root zones. Applicant will not be required to consider more protracted shoring measures. Investigated measures will be summarized in a memorandum submitted to the West Linn arborist.</u> |
| 4 14254 | Giant Sequoia | 39 | The 30-foot deep clearwell will be located immediately to the west of this tree. Consequently, because of the need to move equipment around the excavation and the need to shore up the walls of the clearwell, the Lake Oswego Arborist determined that it is unlikely that this tree will survive the construction activity. <u>During final design applicant will investigate measures to protect these trees using standard tree protection techniques (standard root and foliage protection methods), and minor shoring (up to three feet below existing ground surface adjacent to project excavations) to retain in-situ soils in tree root zones. Applicant will not be required to consider more protracted shoring measures. Investigated measures will be summarized in a memorandum submitted to the West Linn arborist.</u> |
| 5 14349 | Oregon White Oak | 30 | The project designers had two choices for constructing the 3 million gallon clearwell. They could build an above ground water reservoir, potentially exceeding the zone height restrictions and permanently occupying what is now open space, or bury the reservoir. To minimize visual impacts on the neighborhood and to provide open space on site for local enjoyment, the Sponsors selected the clearwell option. The designers considered multiple options for the clearwell but all locations would impact a significant tree. Consequently, this tree will be removed because it would not survive the impacts from the selected layout. |
| 6 14366 | Western Red Cedar | 42 | Same as #5 |