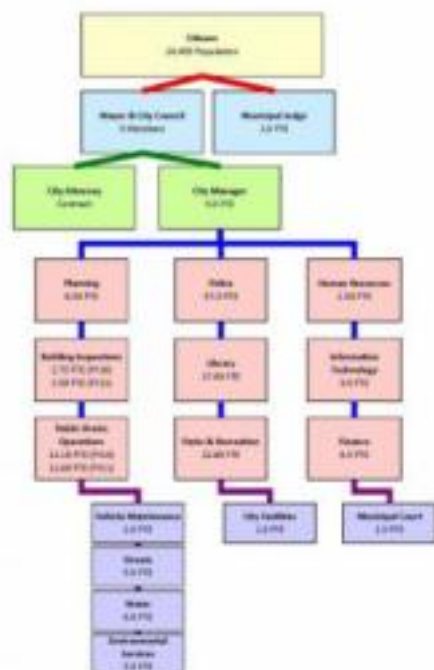


West Linn Organizational Chart



This web page attachment (click below to download the full-size chart) depicts the organizational chart for the City of West Linn.

Total Employees, Administration

FY 2010 - 24.50

FY 2011 - 24.50

Total Employees, Culture

FY 2010 - 40.43

FY 2011 - 40.43

Total Employees, Public Safety

FY 2010 - 43.25

FY 2011 - 43.00

Total Employees, Public Works

FY 2010 - 30.10

FY 2011 - 29.60

Total Employees, City of West Linn

FY 2010 - 138.28

FY 2011 - 137.53

*Administration includes the City Manager's Office, Human Resources, Finance, IT, Facilities, and Planning.

*Culture includes Parks & Recreation and the Library.

*Public Safety includes the Police Department, the Municipal Court, and Building Inspections.

*Public Works includes Support Services, Vehicle Maintenance, Streets, Water, and Environmental Services.

West Linn Organizational Chart

Published on City of West Linn Oregon Official Website (<http://westlinnoregon.gov>)

Supporting Documents



[Download the Organizational Chart](#)

Source URL (retrieved on 2012-05-10 06:29): <http://westlinnoregon.gov/finance/west-linn-organizational-chart>