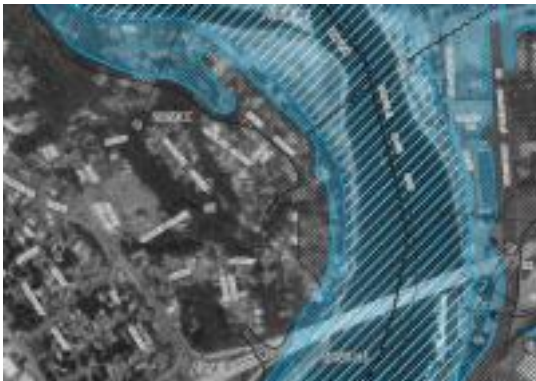


## Flood Insurance Maps



Flood Insurance Rate Maps (FIRM) were published by FEMA in 2008. Citizens need to contact FEMA directly regarding Flood Insurance Elevation Certification.

Citizens need to contact their own Land Surveyor, Engineer, or Architect authorized by law to certify elevation for completion of FEMA'S Elevation Certification Form.

Use the links below to access the Map Service Center and download FEMA's Elevation Certification Form.

### Web Links

[FEMA Map Service Center, Flood Insurance Maps](#)[FEMA Elevation Certification Web Page](#)[National Flood Insurance Program, FEMA Forms](#)

Source URL (retrieved on 2012-05-10 00:28): <http://westlinnoregon.gov/maps/flood-insurance-maps>