

# West Linn City Owned Property

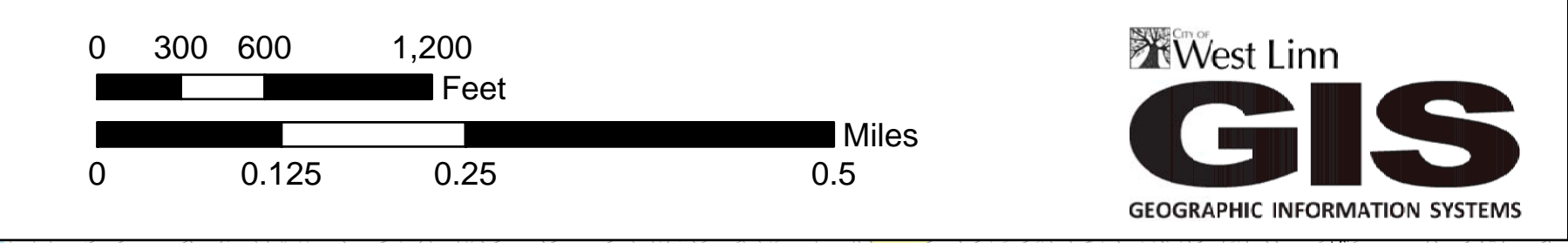
MARCH 2012

## Legend

**City Property Classification** As adopted by West Linn City Council, see document listing below

- Park
- Open Space with Trails and Other Assets (OS)
- Open Space Natural Area (OSN)
- Public Facility
- City

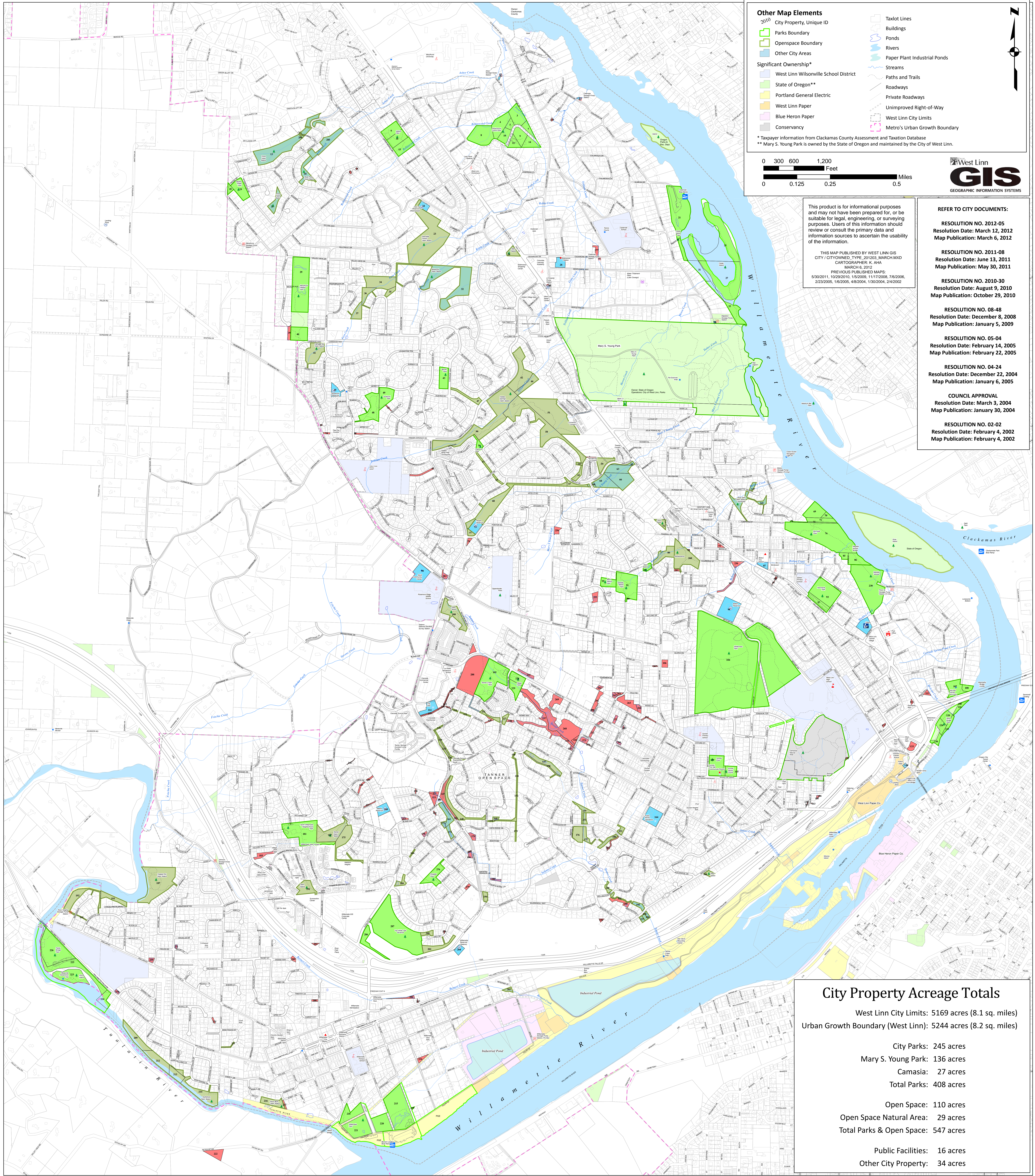
- Other Map Elements**
- City Property, Unique ID
  - Parks Boundary
  - Openspace Boundary
  - Other City Areas
  - Significant Ownership\*
    - West Linn Wilsonville School District
    - State of Oregon\*\*
    - Portland General Electric
    - West Linn Paper
    - Blue Heron Paper
    - Conservancy
  - Taxlot Lines
  - Buildings
  - Ponds
  - Rivers
  - Paper Plant Industrial Ponds
  - Streams
  - Paths and Trails
  - Roadways
  - Private Roadways
  - Unimproved Right-of-Way
  - West Linn City Limits
  - Metro's Urban Growth Boundary
- \* Taxpayer information from Clackamas County Assessment and Taxation Database  
 \*\* Mary S. Young Park is owned by the State of Oregon and maintained by the City of West Linn.



This product is for informational purposes and may not have been prepared for, or be suitable for legal, engineering, or surveying purposes. Users of this information should review or consult the primary data and information sources to ascertain the usability of the information.

THIS MAP PUBLISHED BY WEST LINN GIS  
 CITY/CITYOWNED TYPE: 201203, MARCH MXD  
 CARTOGRAPHER: K. JAA  
 MARCH 6, 2012  
 PREVIOUS PUBLISHED MAPS:  
 5/30/2011, 10/28/2010, 1/5/2009, 11/17/2008, 7/6/2006,  
 2/23/2005, 1/6/2005, 4/8/2004, 1/30/2004, 2/4/2002

- REFER TO CITY DOCUMENTS:**
- RESOLUTION NO. 2012-05**  
 Resolution Date: March 12, 2012  
 Map Publication: March 6, 2012
  - RESOLUTION NO. 2011-08**  
 Resolution Date: June 13, 2011  
 Map Publication: May 30, 2011
  - RESOLUTION NO. 2010-30**  
 Resolution Date: August 9, 2010  
 Map Publication: October 29, 2010
  - RESOLUTION NO. 08-48**  
 Resolution Date: December 8, 2008  
 Map Publication: January 5, 2009
  - RESOLUTION NO. 05-04**  
 Resolution Date: February 14, 2005  
 Map Publication: February 22, 2005
  - RESOLUTION NO. 04-24**  
 Resolution Date: December 22, 2004  
 Map Publication: January 6, 2005
  - COUNCIL APPROVAL**  
 Resolution Date: March 3, 2004  
 Map Publication: January 30, 2004
  - RESOLUTION NO. 02-02**  
 Resolution Date: February 4, 2002  
 Map Publication: February 4, 2002



**City Property Acreage Totals**

West Linn City Limits: 5169 acres (8.1 sq. miles)  
 Urban Growth Boundary (West Linn): 5244 acres (8.2 sq. miles)

City Parks:	245 acres
Mary S. Young Park:	136 acres
Camasia:	27 acres
<b>Total Parks:</b>	<b>408 acres</b>
Open Space:	110 acres
Open Space Natural Area:	29 acres
<b>Total Parks &amp; Open Space:</b>	<b>547 acres</b>
Public Facilities:	16 acres
Other City Property:	34 acres