

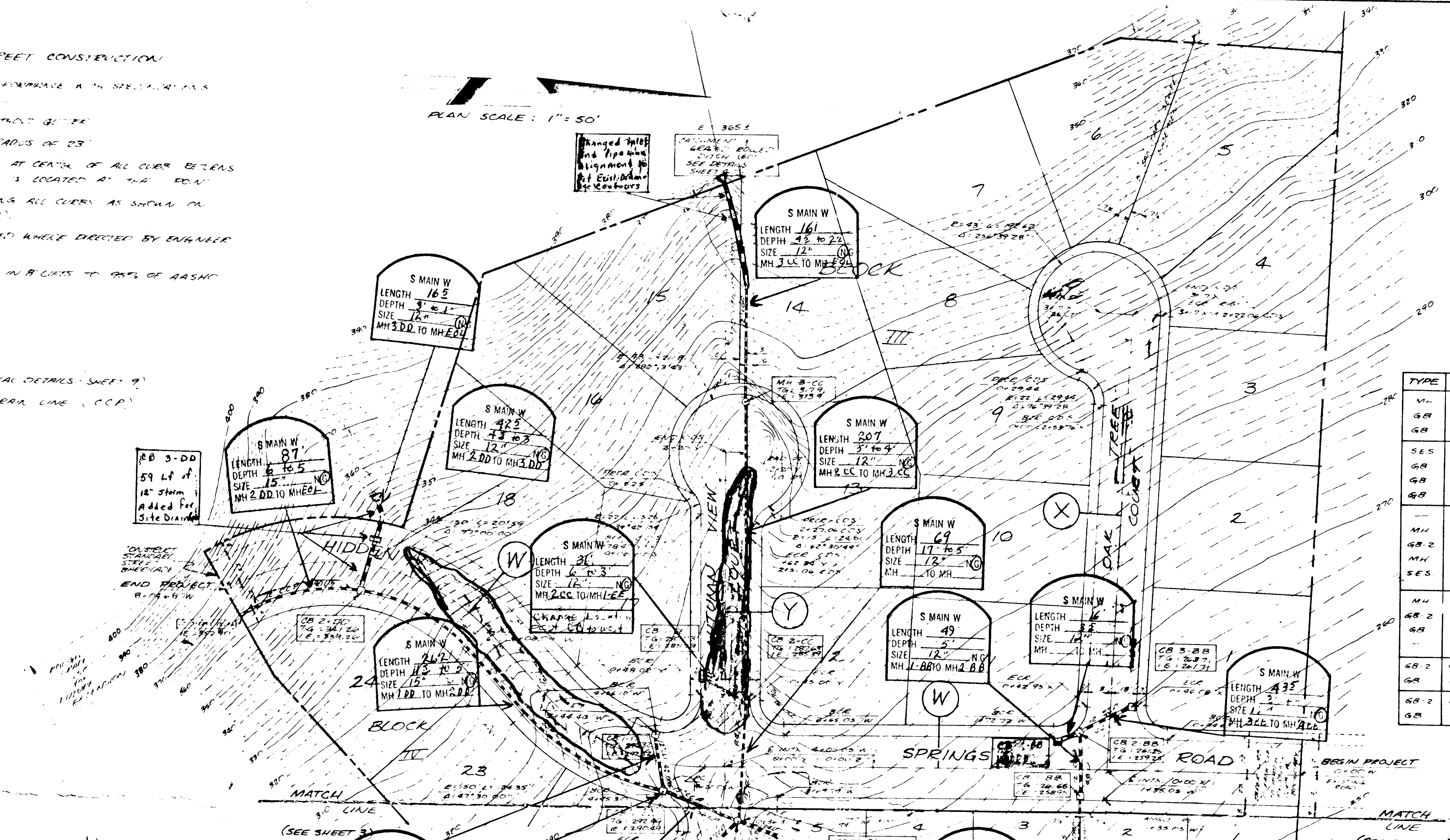
# GENERAL NOTES FOR STREET CONSTRUCTION

1. ALL CONSTRUCTION SHALL BE IN ACCORDANCE WITH THE SPECIFICATIONS OF THE CITY OF HASTINGS.
2. USE 6" STANDARD CURB & GUTTER.
3. ALL CURB RETURNS HAVE A RADIUS OF 25'.
4. CONSTRUCT WHEN CURB RETURNS AT CENTER OF ALL CURB RETURNS EXCEPT WHERE CATCH BASIN IS LOCATED AT THE CORNER.
5. SIDEWALKS TO BE PLACED ALONG ALL CURBS AS SHOWN ON TYPICAL SECTION (SHEET 3).
6. SIDEWALK ISLANDS TO BE PLACED WHERE DIRECTED BY ENGINEER AND TO CITY OF HASTINGS.
7. FILL AREAS TO BE COMPLETED IN 90 DAYS TO 95% OF FINISH TO BE MAINTAINED.
8. CRIMINAL USES.

## LEGEND

- CATCH BASIN (SEE TYPICAL DETAILS SHEET 9)
- STORM DRAIN LINE (CCP)
- MANHOLE (SEE SHEET 8)

PLAN SCALE: 1"=50'

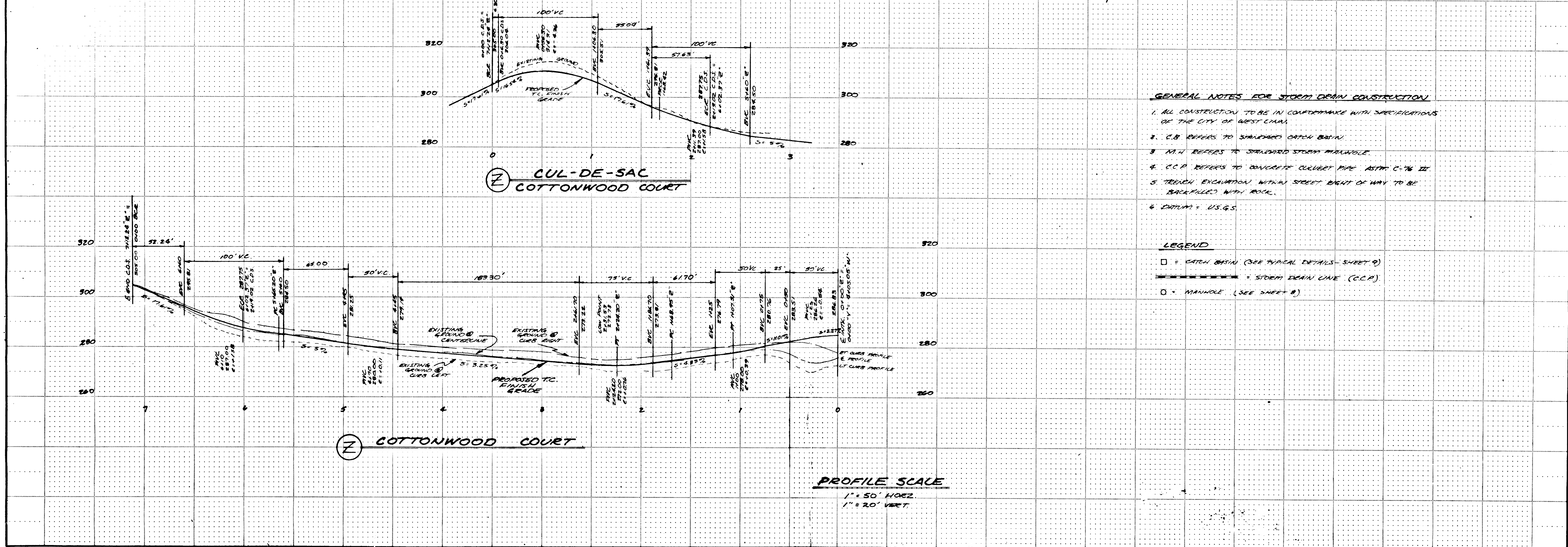
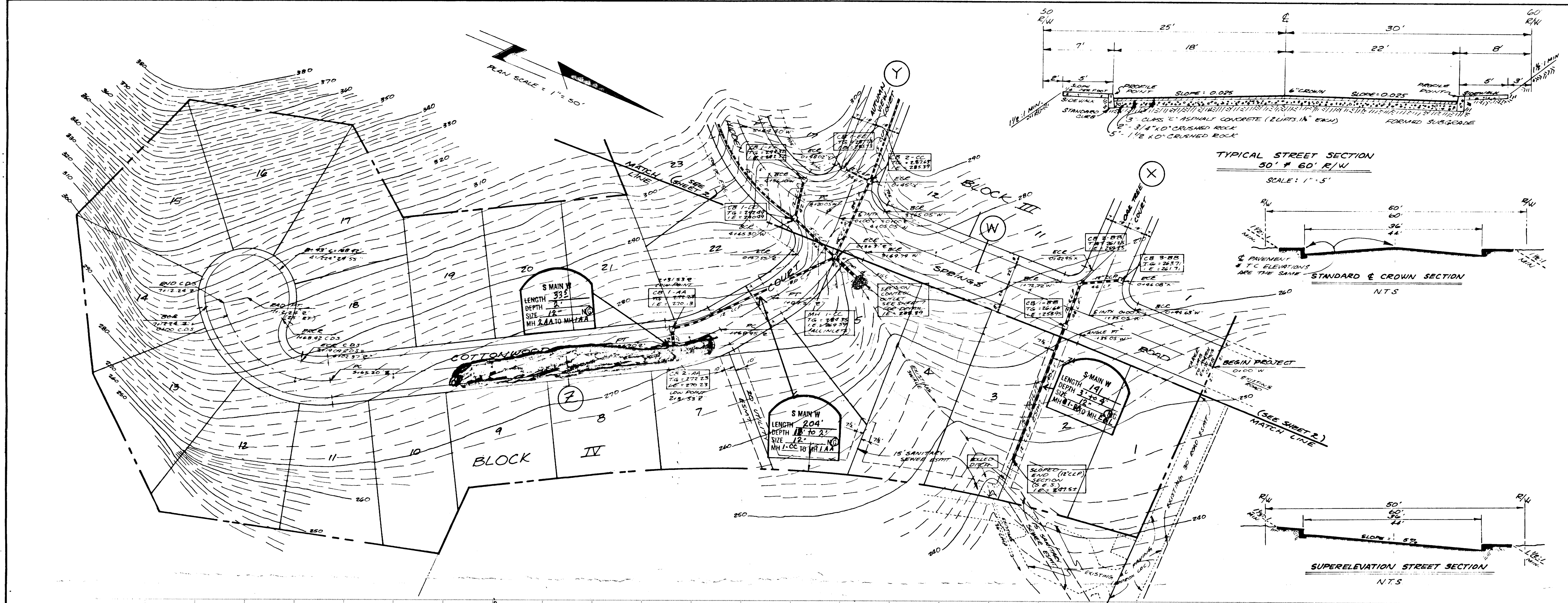


# STORM DRAIN SCHEDULE

DATE: 10/1/83

STATION	DESCRIPTION	PIPE	LENGTH	SLOPE	INVERT	OUTLET
1+00.00	18" DIA. ST. MANHOLE	18" DIA. ST. MANHOLE	0.00	0.00	269.59	18" DIA. ST. MANHOLE
1+00.00	18" DIA. ST. MANHOLE	18" DIA. ST. MANHOLE	0.00	0.00	269.59	18" DIA. ST. MANHOLE
1+00.00	18" DIA. ST. MANHOLE	18" DIA. ST. MANHOLE	0.00	0.00	269.59	18" DIA. ST. MANHOLE
1+00.00	18" DIA. ST. MANHOLE	18" DIA. ST. MANHOLE	0.00	0.00	269.59	18" DIA. ST. MANHOLE
1+00.00	18" DIA. ST. MANHOLE	18" DIA. ST. MANHOLE	0.00	0.00	269.59	18" DIA. ST. MANHOLE
1+00.00	18" DIA. ST. MANHOLE	18" DIA. ST. MANHOLE	0.00	0.00	269.59	18" DIA. ST. MANHOLE
1+00.00	18" DIA. ST. MANHOLE	18" DIA. ST. MANHOLE	0.00	0.00	269.59	18" DIA. ST. MANHOLE
1+00.00	18" DIA. ST. MANHOLE	18" DIA. ST. MANHOLE	0.00	0.00	269.59	18" DIA. ST. MANHOLE
1+00.00	18" DIA. ST. MANHOLE	18" DIA. ST. MANHOLE	0.00	0.00	269.59	18" DIA. ST. MANHOLE
1+00.00	18" DIA. ST. MANHOLE	18" DIA. ST. MANHOLE	0.00	0.00	269.59	18" DIA. ST. MANHOLE
1+00.00	18" DIA. ST. MANHOLE	18" DIA. ST. MANHOLE	0.00	0.00	269.59	18" DIA. ST. MANHOLE
1+00.00	18" DIA. ST. MANHOLE	18" DIA. ST. MANHOLE	0.00	0.00	269.59	18" DIA. ST. MANHOLE
1+00.00	18" DIA. ST. MANHOLE	18" DIA. ST. MANHOLE	0.00	0.00	269.59	18" DIA. ST. MANHOLE
1+00.00	18" DIA. ST. MANHOLE	18" DIA. ST. MANHOLE	0.00	0.00	269.59	18" DIA. ST. MANHOLE
1+00.00	18" DIA. ST. MANHOLE	18" DIA. ST. MANHOLE	0.00	0.00	269.59	18" DIA. ST. MANHOLE
1+00.00	18" DIA. ST. MANHOLE	18" DIA. ST. MANHOLE	0.00	0.00	269.59	18" DIA. ST. MANHOLE
1+00.00	18" DIA. ST. MANHOLE	18" DIA. ST. MANHOLE	0.00	0.00	269.59	18" DIA. ST. MANHOLE
1+00.00	18" DIA. ST. MANHOLE	18" DIA. ST. MANHOLE	0.00	0.00	269.59	18" DIA. ST. MANHOLE
1+00.00	18" DIA. ST. MANHOLE	18" DIA. ST. MANHOLE	0.00	0.00	269.59	18" DIA. ST. MANHOLE
1+00.00	18" DIA. ST. MANHOLE	18" DIA. ST. MANHOLE	0.00	0.00	269.59	18" DIA. ST. MANHOLE
1+00.00	18" DIA. ST. MANHOLE	18" DIA. ST. MANHOLE	0.00	0.00	269.59	18" DIA. ST. MANHOLE
1+00.00	18" DIA. ST. MANHOLE	18" DIA. ST. MANHOLE	0.00	0.00	269.59	18" DIA. ST. MANHOLE
1+00.00	18" DIA. ST. MANHOLE	18" DIA. ST. MANHOLE	0.00	0.00	269.59	18" DIA. ST. MANHOLE
1+00.00	18" DIA. ST. MANHOLE	18" DIA. ST. MANHOLE	0.00	0.00	269.59	18" DIA. ST. MANHOLE
1+00.00	18" DIA. ST. MANHOLE	18" DIA. ST. MANHOLE	0.00	0.00	269.59	18" DIA. ST. MANHOLE
1+00.00	18" DIA. ST. MANHOLE	18" DIA. ST. MANHOLE	0.00	0.00	269.59	18" DIA. ST. MANHOLE
1+00.00	18" DIA. ST. MANHOLE	18" DIA. ST. MANHOLE	0.00	0.00	269.59	18" DIA. ST. MANHOLE
1+00.00	18" DIA. ST. MANHOLE	18" DIA. ST. MANHOLE	0.00	0.00	269.59	18" DIA. ST. MANHOLE
1+00.00	18" DIA. ST. MANHOLE	18" DIA. ST. MANHOLE	0.00	0.00	269.59	18" DIA. ST. MANHOLE
1+00.00	18" DIA. ST. MANHOLE	18" DIA. ST. MANHOLE	0.00	0.00	269.59	18" DIA. ST. MANHOLE
1+00.00	18" DIA. ST. MANHOLE	18" DIA. ST. MANHOLE	0.00	0.00	269.59	18" DIA. ST. MANHOLE
1+00.00	18" DIA. ST. MANHOLE	18" DIA. ST. MANHOLE	0.00	0.00	269.59	18" DIA. ST. MANHOLE
1+00.00	18" DIA. ST. MANHOLE	18" DIA. ST. MANHOLE	0.00	0.00	269.59	18" DIA. ST. MANHOLE
1+00.00	18" DIA. ST. MANHOLE	18" DIA. ST. MANHOLE	0.00	0.00	269.59	18" DIA. ST. MANHOLE
1+00.00	18" DIA. ST. MANHOLE	18" DIA. ST. MANHOLE	0.00	0.00	269.59	18" DIA. ST. MANHOLE
1+00.00	18" DIA. ST. MANHOLE	18" DIA. ST. MANHOLE	0.00	0.00	269.59	18" DIA. ST. MANHOLE
1+00.00	18" DIA. ST. MANHOLE	18" DIA. ST. MANHOLE	0.00	0.00	269.59	18" DIA. ST. MANHOLE
1+00.00	18" DIA. ST. MANHOLE	18" DIA. ST. MANHOLE	0.00	0.00	269.59	18" DIA. ST. MANHOLE
1+00.00	18" DIA. ST. MANHOLE	18" DIA. ST. MANHOLE	0.00	0.00	269.59	18" DIA. ST. MANHOLE
1+00.00	18" DIA. ST. MANHOLE	18" DIA. ST. MANHOLE	0.00	0.00	269.59	18" DIA. ST. MANHOLE
1+00.00	18" DIA. ST. MANHOLE	18" DIA. ST. MANHOLE	0.00	0.00	269.59	18" DIA. ST. MANHOLE
1+00.00	18" DIA. ST. MANHOLE	18" DIA. ST. MANHOLE	0.00	0.00	269.59	18" DIA. ST. MANHOLE
1+00.00	18" DIA. ST. MANHOLE	18" DIA. ST. MANHOLE	0.00	0.00	269.59	18" DIA. ST. MANHOLE
1+00.00	18" DIA. ST. MANHOLE	18" DIA. ST. MANHOLE	0.00	0.00	269.59	18" DIA. ST. MANHOLE
1+00.00	18" DIA. ST. MANHOLE	18" DIA. ST. MANHOLE	0.00	0.00	269.59	18" DIA. ST. MANHOLE
1+00.00	18" DIA. ST. MANHOLE	18" DIA. ST. MANHOLE	0.00	0.00	269.59	18" DIA. ST. MANHOLE
1+00.00	18" DIA. ST. MANHOLE	18" DIA. ST. MANHOLE	0.00	0.00	269.59	18" DIA. ST. MANHOLE
1+00.00	18" DIA. ST. MANHOLE	18" DIA. ST. MANHOLE	0.00	0.00	269.59	18" DIA. ST. MANHOLE
1+00.00	18" DIA. ST. MANHOLE	18" DIA. ST. MANHOLE	0.00	0.00	269.59	18" DIA. ST. MANHOLE
1+00.00	18" DIA. ST. MANHOLE	18" DIA. ST. MANHOLE	0.00	0.00	269.59	18" DIA. ST. MANHOLE
1+00.00	18" DIA. ST. MANHOLE	18" DIA. ST. MANHOLE	0.00	0.00	269.59	18" DIA. ST. MANHOLE
1+00.00	18" DIA. ST. MANHOLE	18" DIA. ST. MANHOLE	0.00	0.00	269.59	18" DIA. ST. MANHOLE
1+00.00	18" DIA. ST. MANHOLE	18" DIA. ST. MANHOLE	0.00	0.00	269.59	18" DIA. ST. MANHOLE
1+00.00	18" DIA. ST. MANHOLE	18" DIA. ST. MANHOLE	0.00	0.00	269.59	18" DIA. ST. MANHOLE
1+00.00	18" DIA. ST. MANHOLE	18" DIA. ST. MANHOLE	0.00	0.00	269.59	18" DIA. ST. MANHOLE
1+00.00	18" DIA. ST. MANHOLE	18" DIA. ST. MANHOLE	0.00	0.00	269.59	18" DIA. ST. MANHOLE
1+00.00	18" DIA. ST. MANHOLE	18" DIA. ST. MANHOLE	0.00	0.00	269.59	18" DIA. ST. MANHOLE
1+00.00	18" DIA. ST. MANHOLE	18" DIA. ST. MANHOLE	0.00	0.00	269.59	18" DIA. ST. MANHOLE
1+00.00	18" DIA. ST. MANHOLE	18" DIA. ST. MANHOLE	0.00	0.00	269.59	18" DIA. ST. MANHOLE
1+00.00	18" DIA. ST. MANHOLE	18" DIA. ST. MANHOLE	0.00	0.00	269.59	18" DIA. ST. MANHOLE
1+00.00	18" DIA. ST. MANHOLE	18" DIA. ST. MANHOLE	0.00	0.00	269.59	18" DIA. ST. MANHOLE
1+00.00	18" DIA. ST. MANHOLE	18" DIA. ST. MANHOLE	0.00	0.00	269.59	18" DIA. ST. MANHOLE
1+00.00	18" DIA. ST. MANHOLE	18" DIA. ST. MANHOLE	0.00	0.00	269.59	18" DIA. ST. MANHOLE
1+00.00	18" DIA. ST. MANHOLE	18" DIA. ST. MANHOLE	0.00	0.00	269.59	18" DIA. ST. MANHOLE
1+00.00	18" DIA. ST. MANHOLE	18" DIA. ST. MANHOLE	0.00	0.00	269.59	18" DIA. ST. MANHOLE
1+00.00	18" DIA. ST. MANHOLE	18" DIA. ST. MANHOLE	0.00	0.00	269.59	18" DIA. ST. MANHOLE
1+00.00	18" DIA. ST. MANHOLE	18" DIA. ST. MANHOLE	0.00	0.00	269.59	18" DIA. ST. MANHOLE
1+00.00	18" DIA. ST. MANHOLE	18" DIA. ST. MANHOLE	0.00	0.00	269.59	18" DIA. ST. MANHOLE
1+00.00	18" DIA. ST. MANHOLE	18" DIA. ST. MANHOLE	0.00	0.00	269.59	18" DIA. ST. MANHOLE
1+00.00	18" DIA. ST. MANHOLE	18" DIA. ST. MANHOLE	0.00	0.00	269.59	18" DIA. ST. MANHOLE
1+00.00	18" DIA. ST. MANHOLE	18" DIA. ST. MANHOLE	0.00	0.00	269.59	18" DIA. ST. MANHOLE
1+00.00	18" DIA. ST. MANHOLE	18" DIA. ST. MANHOLE	0.00	0.00	269.59	18" DIA. ST. MANHOLE
1+00.00	18" DIA. ST. MANHOLE	18" DIA. ST. MANHOLE	0.00	0.00	269.59	18" DIA. ST. MANHOLE
1+00.00	18" DIA. ST. MANHOLE	18" DIA. ST. MANHOLE	0.00	0.00	269.59	18" DIA. ST. MANHOLE
1+00.00	18" DIA. ST. MANHOLE	18" DIA. ST. MANHOLE	0.00	0.00	269.59	18" DIA. ST. MANHOLE
1+00.00	18" DIA. ST. MANHOLE	18" DIA. ST. MANHOLE	0.00	0.00	269.59	18" DIA. ST. MANHOLE
1+00.00	18" DIA. ST. MANHOLE	18" DIA. ST. MANHOLE	0.00	0.00	269.59	18" DIA. ST. MANHOLE
1+00.00	18" DIA. ST. MANHOLE	18" DIA. ST. MANHOLE	0.00	0.00	269.59	18" DIA. ST. MANHOLE
1+00.00	18" DIA. ST. MANHOLE	18" DIA. ST. MANHOLE	0.00	0.00	269.59	18" DIA. ST. MANHOLE
1+00.00	18" DIA. ST. MANHOLE	18" DIA. ST. MANHOLE	0.00	0.00	269.59	18" DIA. ST. MANHOLE
1+00.00	18" DIA. ST. MANHOLE	18" DIA. ST. MANHOLE	0.00	0.00	269.59	18" DIA. ST. MANHOLE
1+00.00	18" DIA. ST. MANHOLE	18" DIA. ST. MANHOLE	0.00	0.00	269.59	18" DIA. ST. MANHOLE
1+00.00	18" DIA. ST. MANHOLE	18" DIA. ST. MANHOLE	0.00	0.00	269.59	18" DIA. ST. MANHOLE
1+00.00	18" DIA. ST. MANHOLE	18" DIA. ST. MANHOLE	0.00	0.00	269.59	18" DIA. ST. MANHOLE
1+00.00	18" DIA. ST. MANHOLE	18" DIA. ST. MANHOLE	0.00	0.00	269.59	18" DIA. ST. MANHOLE
1+00.00	18" DIA. ST. MANHOLE	18" DIA. ST. MANHOLE	0.00	0.00	269.59	18" DIA. ST. MANHOLE
1+00.00	18" DIA. ST. MANHOLE	18" DIA. ST. MANHOLE	0.00	0.00	269.59	18" DIA. ST. MANHOLE
1+00.00	18" DIA. ST. MANHOLE	18" DIA. ST. MANHOLE	0.00	0.00	269.59	18" DIA. ST. MANHOLE
1+00.00	18" DIA. ST. MANHOLE	18" DIA. ST. MANHOLE	0.00	0.00	269.59	18" DIA. ST. MANHOLE
1+00.00	18" DIA. ST. MANHOLE	18" DIA. ST. MANHOLE	0.00	0.00	269.59	





REVISIONS	
NO.	DESCRIPTION/DATE BY

643-5475

**1882**  
Ginther/SEA, Inc.  
3800 Cedar Hills Blvd.  
Suite 276  
Beaverton, OR. 97005

**ROBINWOOD  
ESTATES No. II**

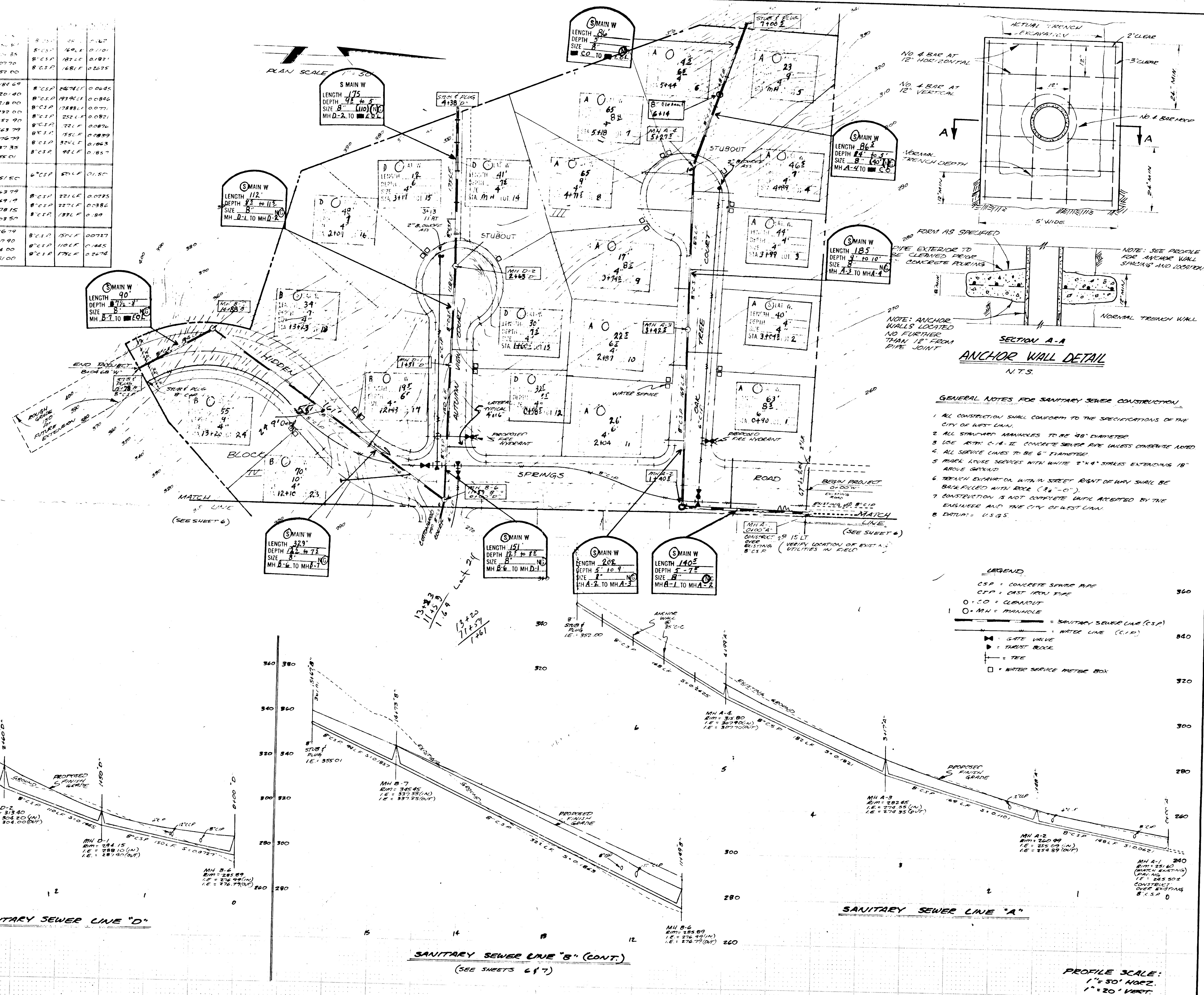
**street  
and  
storm drain**

JOB NO.	9-134-1-761
DESIGNED	JAE
DRAWN	JAE, K.M.
COMP.	JAE
CHECKED	G.T.G.
DATE	4/26/77
SHEET NO.	3

3 OF 9 SHEETS



			250.50	250.50	8' C.S.P.	149.40	0.167
			307.90	307.90	8' C.S.P.	187.60	0.187
				352.00	8' C.S.P.	168.10	0.2675
No	EXISTING MH	0' 00.0" B"	184.89	184.89			
	MH B-1	2' 00.0" B"	201.60	201.60	8' C.S.P.	246.74	0.060
	MH B-2	4' 00.0" B"	218.20	218.20	8' C.S.P.	278.96	0.084
	MH B-3	6' 11.36" B"	232.70	232.70	8' C.S.P.	318.88	0.077
	MH B-4	8' 17.2" B"	253.10	253.10	8' C.S.P.	352.10	0.082
	MH B-5	8' 48.8" B"	263.99	263.99	8' C.S.P.	372.10	0.0876
	MH B-6	11' 09.5" B"	276.89	276.89	8' C.S.P.	418.93	0.0839
	MH B-7	11' 17.3" B"	337.55	337.35	8' C.S.P.	510.65	0.0635
	B" SUEB	15' 47.8" B"		355.01	8' C.S.P.	492.60	0.0857
BX	WYE BX	7' 45.8" B"	245.85				
	CO BX	0' 00.0" B"		251.50	6" C.S.P.	501.60	0.1500
C	MH B-5	0' 00.0" C"	263.99	263.99	8' C.S.P.	321.60	0.0785
	MH C-1	2' 21.0" C"	269.39	269.40	8' C.S.P.	327.60	0.0386
	MH C-2	4' 08.0" C"	278.35	278.15	8' C.S.P.	338.60	0.089
	MH C-3	5' 48.0" C"		303.50			0.089
D	MH B-6	0' 00.0" D"	276.89	276.89	8' C.S.P.	350.60	0.0772
	MH D-1	1' 50.0" D"	288.10	287.90	8' C.S.P.	360.60	0.1685
	MH D-2	2' 40.0" D"	304.20	304.00	8' C.S.P.	378.60	0.2674
				351.00			
	B" SUEB	4' 35.3" B"					

[illegible]

**Tea**  
Ginther / SEA, Inc.  
3800 Cedar Hills Blvd.  
Suite 276  
Beaverton, OR. 97005  
643 - 5475

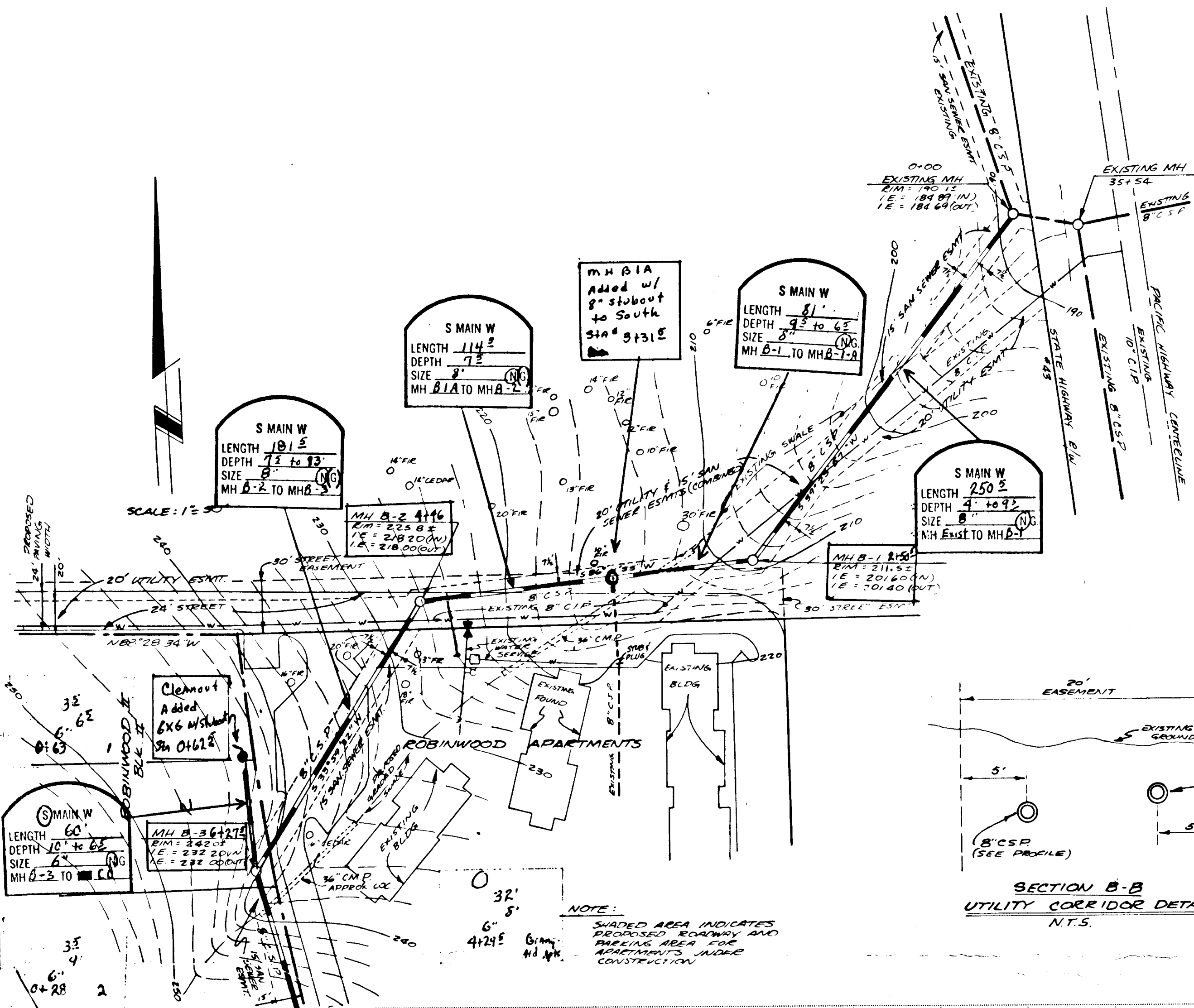
**ROBINWOOD  
ESTATES No. II**

# sanitary sewer and water system

JOB NO.	3-34
DESIGNED	JAR
DRAWN	JAR, KM
COMP.	JAR
CHECKED	GTG
DATE	APRIL, 1977
SHEET NO.	

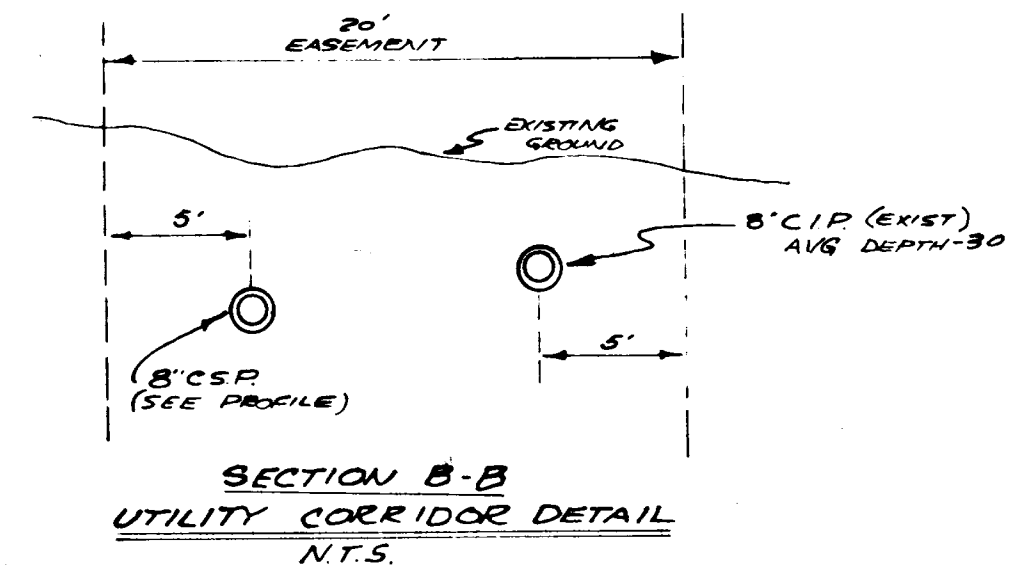




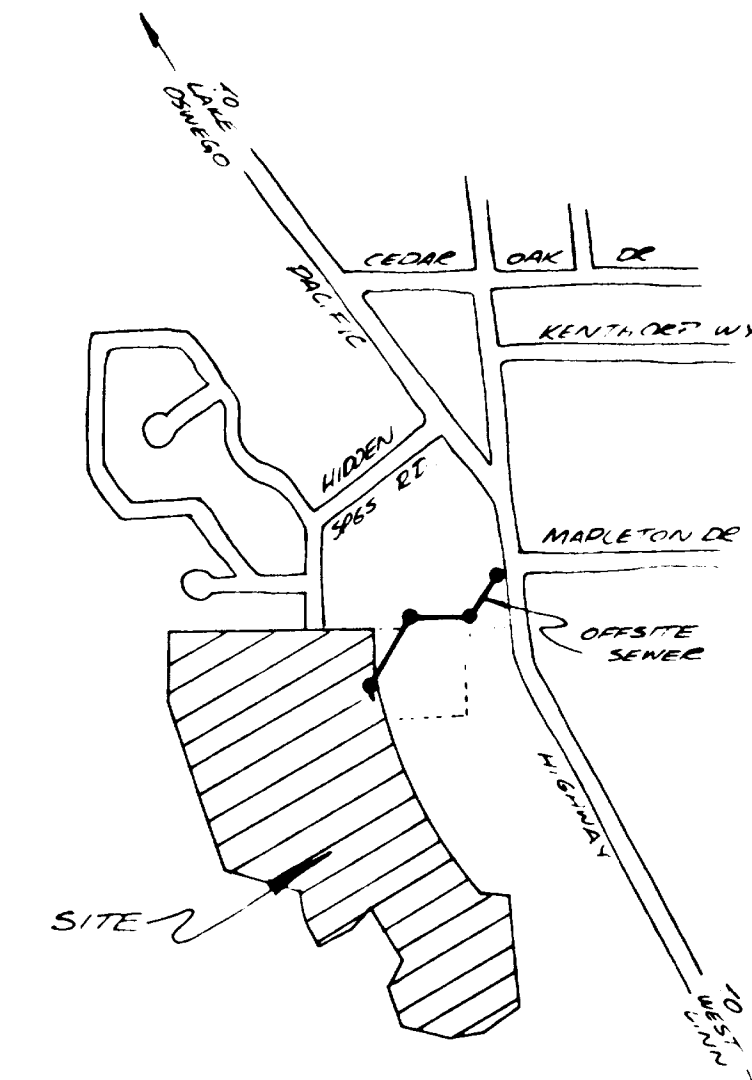
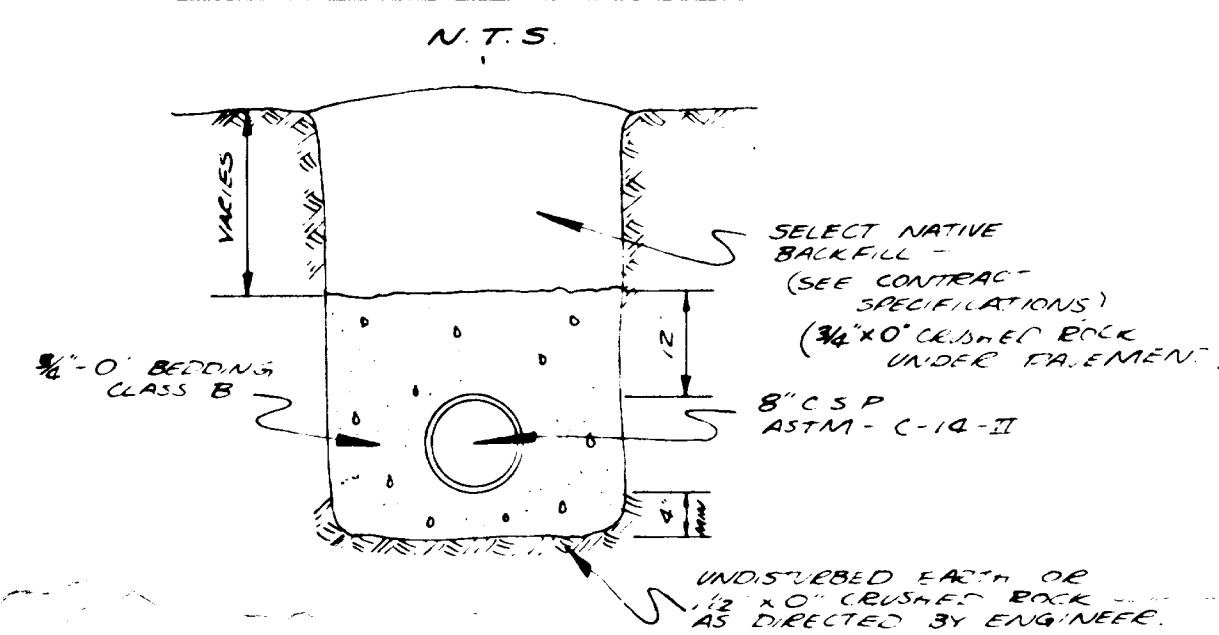


#### GENERAL SANITARY SEWER NOTES

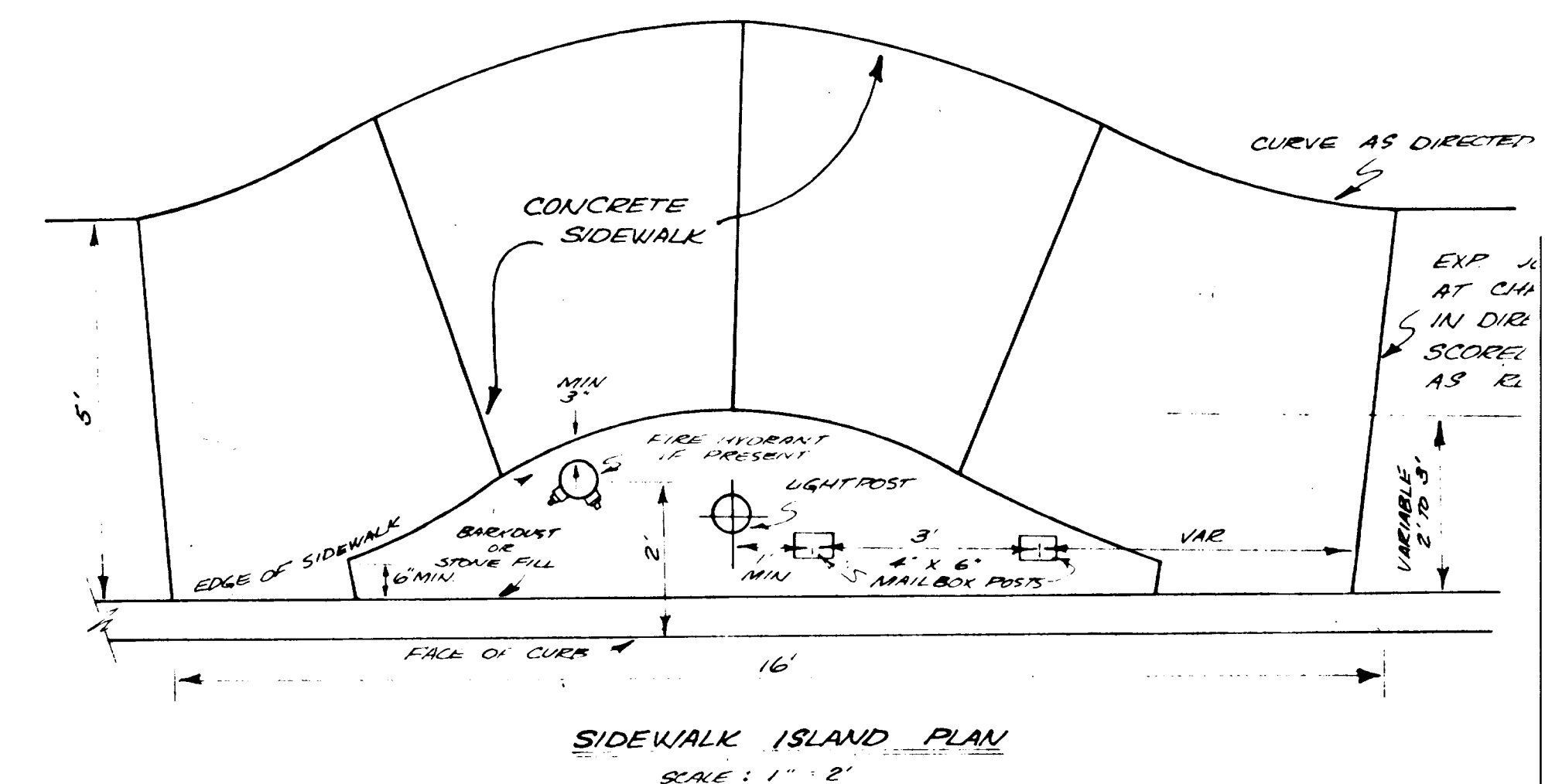
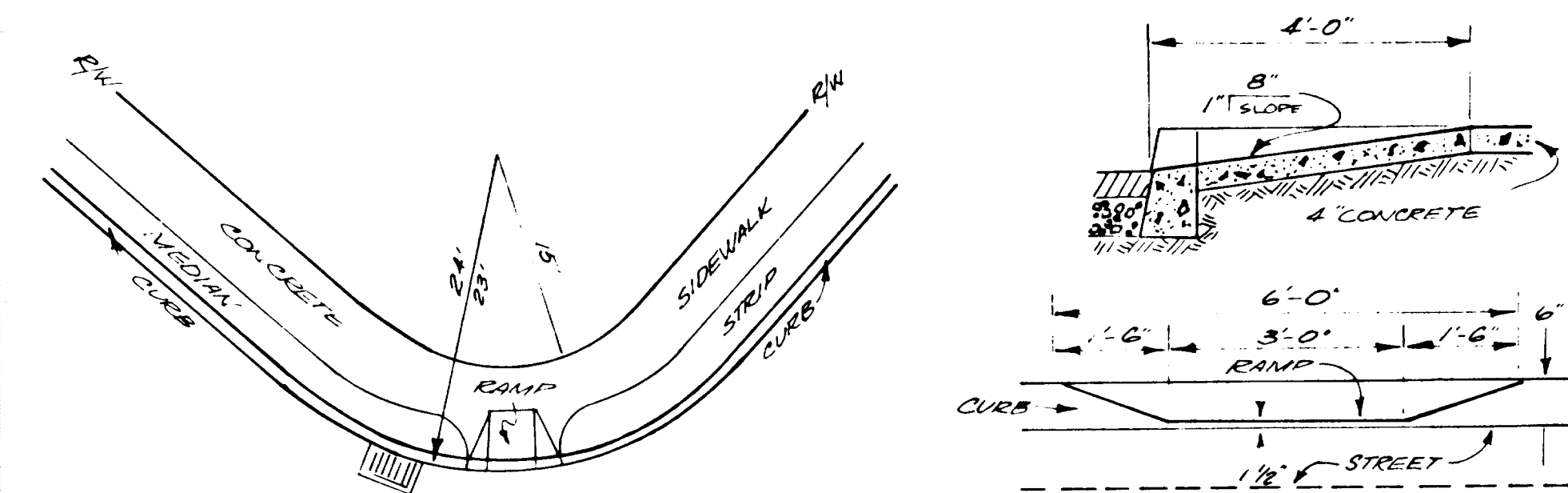
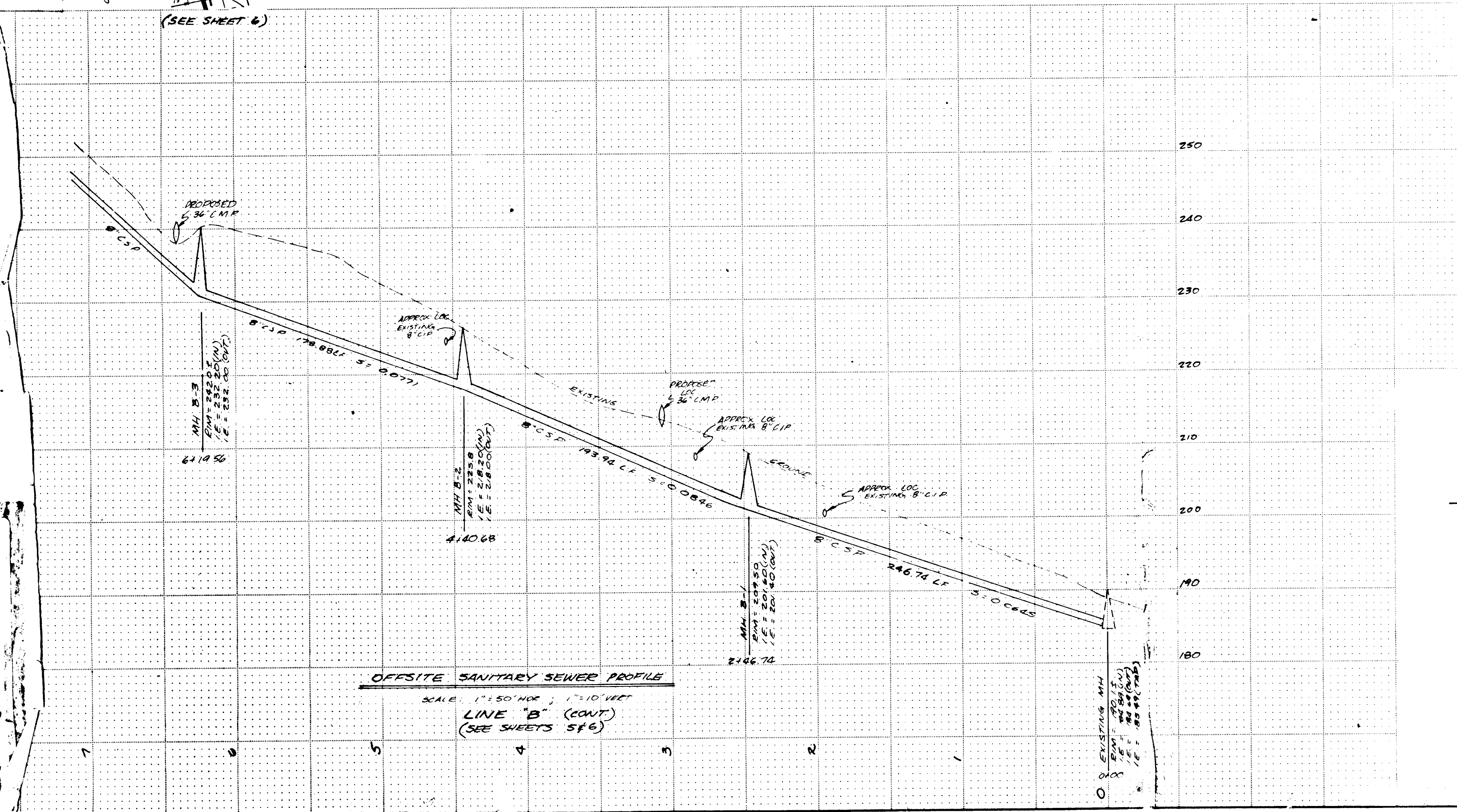
1. USE ASTM C-14-11 CONCRETE SEWER PIPE (C.S.P.) UNLESS OTHERWISE NOTED.
2. CONSTRUCTION IS NOT COMPLETE UNTIL ACCEPTED BY THE ENGINEER.
3. ALL CONSTRUCTION SHALL CONFORM TO THE SPECIFICATIONS OF THE CITY OF WEST LINN.
4. TRENCH EXCAVATION WITHIN STREET RIGHT OF WAY SHALL BE BACKFILLED WITH SELECT BACKFILL (¾" X 0" CRUSHED ROCK).
5. DATUM - U.S.G.S.
6. BENCH MARK - 1" PL. NAIL, END OF PAVING (ROBINWOOD ESTATES) @ E. HIDDEN SPRINGS ROAD, ELEV. = 251.57.  
 1) RIM OF EXISTING MANHOLE 35+54 ALONG SHOULDER OF PACIFIC HIGHWAY NO. 43, ELEV. = 190.45.  
 2) RE. SPIKE IN 16" P.C., LOT 32 ROBINWOOD ESTATES, ELEV. = 258.82.



#### TYPICAL TRENCH DETAIL



#### VICINITY MAP





## **Second Scan**

**This As-Built was scanned twice due to illegibility issues of the original scan.**



# GENERAL NOTES FOR STREET CONSTRUCTION

1. ALL CONSTRUCTION TO BE IN CONFORMANCE WITH SPECIFICATIONS OF THE CITY OF WEST LAM.
2. USE 6" STANDARD CURB WITHOUT GUTTER.
3. ALL CURB RETURNS HAVE A RADIUS OF 23'.
4. CONSTRUCT WHEEL CHAIR RAMP AT CENTER OF ALL CURB RETURNS EXCEPT WHERE CATCH BASIN IS LOCATED AT THE POINT.
5. SIDEWALKS TO BE PLACED ALONG ALL CURBS AS SHOWN ON TYPICAL SECTION (SHEET 3).
6. SIDEWALK ISLANDS TO BE PLACED WHERE DIRECTED BY ENGINEER AND CC CITY OF WEST LAM.
7. FILL AREAS TO BE COMPACTED IN 8' LIFTS TO 95% OF AASHTO T-99 METHOD A.
8. CATCH BASIN USGS.

## LEGEND

- CATCH BASIN (SEE TYPICAL DETAILS - SHEET 9)
- STORM DRAIN LINE (CCP)
- MANHOLE (SEE SHEET 8)

PLAN SCALE: 1" = 50'

WATER LINE (TYPICAL) SCHEDULE

1. CUL-DE-SAC, ROAD	2. CUL-DE-SAC, ROAD	3. CUL-DE-SAC, ROAD
STA 0+00 TO 0+100 18" DIA. 10' DEPT.	STA 0+00 TO 0+100 18" DIA. 10' DEPT.	STA 0+00 TO 0+100 18" DIA. 10' DEPT.
STA 100+00 TO 100+100 18" DIA. 10' DEPT.	STA 100+00 TO 100+100 18" DIA. 10' DEPT.	STA 100+00 TO 100+100 18" DIA. 10' DEPT.
STA 100+100 TO 100+200 18" DIA. 10' DEPT.	STA 100+100 TO 100+200 18" DIA. 10' DEPT.	STA 100+100 TO 100+200 18" DIA. 10' DEPT.
STA 100+200 TO 100+300 18" DIA. 10' DEPT.	STA 100+200 TO 100+300 18" DIA. 10' DEPT.	STA 100+200 TO 100+300 18" DIA. 10' DEPT.
STA 100+300 TO 100+400 18" DIA. 10' DEPT.	STA 100+300 TO 100+400 18" DIA. 10' DEPT.	STA 100+300 TO 100+400 18" DIA. 10' DEPT.
STA 100+400 TO 100+500 18" DIA. 10' DEPT.	STA 100+400 TO 100+500 18" DIA. 10' DEPT.	STA 100+400 TO 100+500 18" DIA. 10' DEPT.
STA 100+500 TO 100+600 18" DIA. 10' DEPT.	STA 100+500 TO 100+600 18" DIA. 10' DEPT.	STA 100+500 TO 100+600 18" DIA. 10' DEPT.
STA 100+600 TO 100+700 18" DIA. 10' DEPT.	STA 100+600 TO 100+700 18" DIA. 10' DEPT.	STA 100+600 TO 100+700 18" DIA. 10' DEPT.
STA 100+700 TO 100+800 18" DIA. 10' DEPT.	STA 100+700 TO 100+800 18" DIA. 10' DEPT.	STA 100+700 TO 100+800 18" DIA. 10' DEPT.
STA 100+800 TO 100+900 18" DIA. 10' DEPT.	STA 100+800 TO 100+900 18" DIA. 10' DEPT.	STA 100+800 TO 100+900 18" DIA. 10' DEPT.
STA 100+900 TO 100+1000 18" DIA. 10' DEPT.	STA 100+900 TO 100+1000 18" DIA. 10' DEPT.	STA 100+900 TO 100+1000 18" DIA. 10' DEPT.

## STORM DRAIN SCHEDULE

TYPE	DESC.	LOCATION	I.E.	PIPE	LENGTH	SLOPE
MH	MH 1-CC	18" LT. STA 0+36.31" E	369.59	12" C.C.P.	180.00	0.003
CB	CB 1-AA	18" RT. STA 2+13.53" E	270.13	12" C.C.P.	34.00	0.003
CB	CB 2-AA	18" LT. STA 2+13.53" E	270.13	12" C.C.P.	34.00	0.003
SEES	SLOPED END SECTION	100' EMBANKMENT ALONG LINE OF LOT 15, FROM 1.85	247.55	12" C.C.P.	140.00	0.003
CB	CB 1-BB	18" LT. STA 2+13.53" E	270.13	12" C.C.P.	34.00	0.003
CB	CB 2-BB	18" RT. STA 2+13.53" E	270.13	12" C.C.P.	34.00	0.003
CB	CB 3-BB	18" LT. STA 2+13.53" E	270.13	12" C.C.P.	34.00	0.003
DAYLIGHT	DAYLIGHT	24" UNWIDELY OF MH 1-CC	268.39	18" C.C.P.	24.00	0.003
MH	MH 1-CC	18" LT. STA 0+36.31" E	369.59	12" C.C.P.	180.00	0.003
CB	CB 2-CC	18" RT. STA 0+36.31" E	369.59	12" C.C.P.	34.00	0.003
MH	MH 2-CC	18" LT. STA 0+36.31" E	369.59	12" C.C.P.	180.00	0.003
SEES	CATCHMENT - ENDPIPE	7' EAST OF NORTH N. LOT 15, FROM 1.85	365.8	12" C.C.P.	162.00	0.003
MH	MH 1-CC	18" LT. STA 0+36.31" E	369.59	12" C.C.P.	180.00	0.003
CB	CB 1-DD	22" LT. STA 1+45.50" W	290.49	12" C.C.P.	256.00	0.003
CB	CB 2-DD	22" LT. STA 1+45.50" W	290.49	12" C.C.P.	256.00	0.003
CB	CB 3-DD	22" LT. STA 1+45.50" W	290.49	12" C.C.P.	256.00	0.003
CB	CB 4-DD	22" LT. STA 1+45.50" W	290.49	12" C.C.P.	256.00	0.003
CB	CB 5-DD	22" LT. STA 1+45.50" W	290.49	12" C.C.P.	256.00	0.003
CB	CB 6-DD	22" LT. STA 1+45.50" W	290.49	12" C.C.P.	256.00	0.003
CB	CB 7-DD	22" LT. STA 1+45.50" W	290.49	12" C.C.P.	256.00	0.003
CB	CB 8-DD	22" LT. STA 1+45.50" W	290.49	12" C.C.P.	256.00	0.003
CB	CB 9-DD	22" LT. STA 1+45.50" W	290.49	12" C.C.P.	256.00	0.003
CB	CB 10-DD	22" LT. STA 1+45.50" W	290.49	12" C.C.P.	256.00	0.003
CB	CB 11-DD	22" LT. STA 1+45.50" W	290.49	12" C.C.P.	256.00	0.003
CB	CB 12-DD	22" LT. STA 1+45.50" W	290.49	12" C.C.P.	256.00	0.003
CB	CB 13-DD	22" LT. STA 1+45.50" W	290.49	12" C.C.P.	256.00	0.003
CB	CB 14-DD	22" LT. STA 1+45.50" W	290.49	12" C.C.P.	256.00	0.003
CB	CB 15-DD	22" LT. STA 1+45.50" W	290.49	12" C.C.P.	256.00	0.003
CB	CB 16-DD	22" LT. STA 1+45.50" W	290.49	12" C.C.P.	256.00	0.003
CB	CB 17-DD	22" LT. STA 1+45.50" W	290.49	12" C.C.P.	256.00	0.003
CB	CB 18-DD	22" LT. STA 1+45.50" W	290.49	12" C.C.P.	256.00	0.003
CB	CB 19-DD	22" LT. STA 1+45.50" W	290.49	12" C.C.P.	256.00	0.003
CB	CB 20-DD	22" LT. STA 1+45.50" W	290.49	12" C.C.P.	256.00	0.003
CB	CB 21-DD	22" LT. STA 1+45.50" W	290.49	12" C.C.P.	256.00	0.003
CB	CB 22-DD	22" LT. STA 1+45.50" W	290.49	12" C.C.P.	256.00	0.003
CB	CB 23-DD	22" LT. STA 1+45.50" W	290.49	12" C.C.P.	256.00	0.003
CB	CB 24-DD	22" LT. STA 1+45.50" W	290.49	12" C.C.P.	256.00	0.003
CB	CB 25-DD	22" LT. STA 1+45.50" W	290.49	12" C.C.P.	256.00	0.003
CB	CB 26-DD	22" LT. STA 1+45.50" W	290.49	12" C.C.P.	256.00	0.003
CB	CB 27-DD	22" LT. STA 1+45.50" W	290.49	12" C.C.P.	256.00	0.003
CB	CB 28-DD	22" LT. STA 1+45.50" W	290.49	12" C.C.P.	256.00	0.003
CB	CB 29-DD	22" LT. STA 1+45.50" W	290.49	12" C.C.P.	256.00	0.003
CB	CB 30-DD	22" LT. STA 1+45.50" W	290.49	12" C.C.P.	256.00	0.003
CB	CB 31-DD	22" LT. STA 1+45.50" W	290.49	12" C.C.P.	256.00	0.003
CB	CB 32-DD	22" LT. STA 1+45.50" W	290.49	12" C.C.P.	256.00	0.003
CB	CB 33-DD	22" LT. STA 1+45.50" W	290.49	12" C.C.P.	256.00	0.003
CB	CB 34-DD	22" LT. STA 1+45.50" W	290.49	12" C.C.P.	256.00	0.003
CB	CB 35-DD	22" LT. STA 1+45.50" W	290.49	12" C.C.P.	256.00	0.003
CB	CB 36-DD	22" LT. STA 1+45.50" W	290.49	12" C.C.P.	256.00	0.003
CB	CB 37-DD	22" LT. STA 1+45.50" W	290.49	12" C.C.P.	256.00	0.003
CB	CB 38-DD	22" LT. STA 1+45.50" W	290.49	12" C.C.P.	256.00	0.003
CB	CB 39-DD	22" LT. STA 1+45.50" W	290.49	12" C.C.P.	256.00	0.003
CB	CB 40-DD	22" LT. STA 1+45.50" W	290.49	12" C.C.P.	256.00	0.003
CB	CB 41-DD	22" LT. STA 1+45.50" W	290.49	12" C.C.P.	256.00	0.003
CB	CB 42-DD	22" LT. STA 1+45.50" W	290.49	12" C.C.P.	256.00	0.003
CB	CB 43-DD	22" LT. STA 1+45.50" W	290.49	12" C.C.P.	256.00	0.003
CB	CB 44-DD	22" LT. STA 1+45.50" W	290.49	12" C.C.P.	256.00	0.003
CB	CB 45-DD	22" LT. STA 1+45.50" W	290.49	12" C.C.P.	256.00	0.003
CB	CB 46-DD	22" LT. STA 1+45.50" W	290.49	12" C.C.P.	256.00	0.003
CB	CB 47-DD	22" LT. STA 1+45.50" W	290.49	12" C.C.P.	256.00	0.003
CB	CB 48-DD	22" LT. STA 1+45.50" W	290.49	12" C.C.P.	256.00	0.003
CB	CB 49-DD	22" LT. STA 1+45.50" W	290.49	12" C.C.P.	256.00	0.003
CB	CB 50-DD	22" LT. STA 1+45.50" W	290.49	12" C.C.P.	256.00	0.003
CB	CB 51-DD	22" LT. STA 1+45.50" W	290.49	12" C.C.P.	256.00	0.003
CB	CB 52-DD	22" LT. STA 1+45.50" W	290.49	12" C.C.P.	256.00	0.003
CB	CB 53-DD	22" LT. STA 1+45.50" W	290.49	12" C.C.P.	256.00	0.003
CB	CB 54-DD	22" LT. STA 1+45.50" W	290.49	12" C.C.P.	256.00	0.003
CB	CB 55-DD	22" LT. STA 1+45.50" W	290.49	12" C.C.P.	256.00	0.003
CB	CB 56-DD	22" LT. STA 1+45.50" W	290.49	12" C.C.P.	256.00	0.003
CB	CB 57-DD	22" LT. STA 1+45.50" W	290.49	12" C.C.P.	256.00	0.003
CB	CB 58-DD	22" LT. STA 1+45.50" W	290.49	12" C.C.P.	256.00	0.003
CB	CB 59-DD	22" LT. STA 1+45.50" W	290.49	12" C.C.P.	256.00	0.003
CB	CB 60-DD	22" LT. STA 1+45.50" W	290.49	12" C.C.P.	256.00	0.003
CB	CB 61-DD	22" LT. STA 1+45.50" W	290.49	12" C.C.P.	256.00	0.003
CB	CB 62-DD	22" LT. STA 1+45.50" W	290.49	12" C.C.P.	256.00	0.003
CB	CB 63-DD	22" LT. STA 1+45.50" W	290.49	12" C.C.P.	256.00	0.003
CB	CB 64-DD	22" LT. STA 1+45.50" W	290.49	12" C.C.P.	256.00	0.003
CB	CB 65-DD	22" LT. STA 1+45.50" W	290.49	12" C.C.P.	256.00	0.003
CB	CB 66-DD	22" LT. STA 1+45.50" W	290.49	12" C.C.P.	256.00	0.003
CB	CB 67-DD	22" LT. STA 1+45.50" W	290.49	12" C.C.P.	256.00	0.003
CB	CB 68-DD	22" LT. STA 1+45.50" W	290.49	12" C.C.P.	256.00	0.003
CB	CB 69-DD	22" LT. STA 1+45.50" W	290.49	12" C.C.P.	256.00	0.003
CB	CB 70-DD	22" LT. STA 1+45.50" W	290.49	12" C.C.P.	256.00	0.003
CB	CB 71-DD	22" LT. STA 1+45.50" W	290.49	12" C.C.P.	256.00	0.003
CB	CB 72-DD	22" LT. STA 1+45.50" W	290.49	12" C.C.P.	256.00	0.003
CB	CB 73-DD	22" LT. STA 1+45.50" W	290.49	12" C.C.P.	256.00	0.003
CB	CB 74-DD	22" LT. STA 1+45.50" W	290.49	12" C.C.P.	256.00	0.003
CB	CB 75-DD	22" LT. STA 1+45.50" W	290.49	12" C.C.P.	256.00	0.003
CB	CB 76-DD	22" LT. STA 1+45.50" W	290.49	12" C.C.P.	256.00	0.003
CB	CB 77-DD	22" LT. STA 1+45.50" W	290.49	12" C.C.P.	256.00	0.003
CB	CB 78-DD	22" LT. STA 1+45.50" W	290.49	12" C.C.P.	256.00	0.003
CB	CB 79-DD	22" LT. STA 1+45.50" W	290.49	12" C.C.P.	256.00	0.003
CB	CB 80-DD	22" LT. STA 1+45.50" W	290.49	12" C.C.P.	256.00	0.003
CB	CB 81-DD	22" LT. STA 1+45.50" W	290.49	12" C.C.P.	256.00	0.003
CB	CB 82-DD	22" LT. STA 1+45.50" W	290.49	12" C.C.P.	256.00	0.003
CB	CB 83-DD	22" LT. STA 1+45.50" W	290.49	12" C.C.P.	256.00	0.003
CB	CB 84-DD	22" LT. STA 1+45.50" W	290.49	12" C.C.P.	256.00	0.003
CB	CB 85-DD	22" LT. STA 1+45.50" W	290.49	12" C.C.P.	256.00	0.003
CB	CB 86-DD	22" LT. STA 1+45.50" W	290.49	12" C.C.P.	256.00	0.003
CB	CB 87-DD	22" LT. STA 1+45.50" W	290.49	12" C.C.P.	256.00	0.003
CB	CB 88-DD	22" LT. STA 1+45.50" W	290.49	12" C.C.P.	256.00	0.003
CB	CB 89-DD	22" LT. STA 1+45.50" W	290.49	12" C.C.P.	256.00	0.003
CB	CB 90-DD	22" LT. STA 1+45.50" W	290.49	12" C.C.P.	256.00	0.003
CB	CB 91-DD	22" LT. STA 1+45.50" W	290.49	12" C.C.P.	256.00	0.003
CB	CB 92-DD	22" LT. STA 1+45.50" W	290.49	12" C.C.P.	256.00	0.003
CB	CB 93-DD	22" LT. STA 1+45.50" W	290.49	12" C.C.P.	256.00	0.003
CB	CB 94-DD	22" LT. STA 1+45.50" W	290.49	12" C.C.P.	256.00	0.003
CB	CB 95-DD	22" LT. STA 1+45.50" W	290.49	12" C.C.P.	256.00	0.003
CB	CB 96-DD	22" LT. STA 1+45.50" W	290.49	12" C.C.P.	256.00	0.003
CB	CB 97-DD	22" LT. STA 1+45.50" W	290.49	12" C.C.P.	256.00	0.003
CB	CB 98-DD	22" LT. STA 1+45.50" W	290.49	12" C.C.P.	256.00	0.003
CB	CB 99-DD	22" LT. STA 1+45.50" W	290.49	12" C.C.P.	256.00	0.003
CB	CB 100-DD	22" LT. STA 1+45.50" W	290.49	12" C.C.P.	256.00	0.003

643-5475

sea  
Ginther/SEA, Inc.  
3800 Cedar Hills Blvd.  
Suite 276  
Beaverton, OR. 97005

ROBINWOOD  
ESTATES No. II

street  
and  
storm drain

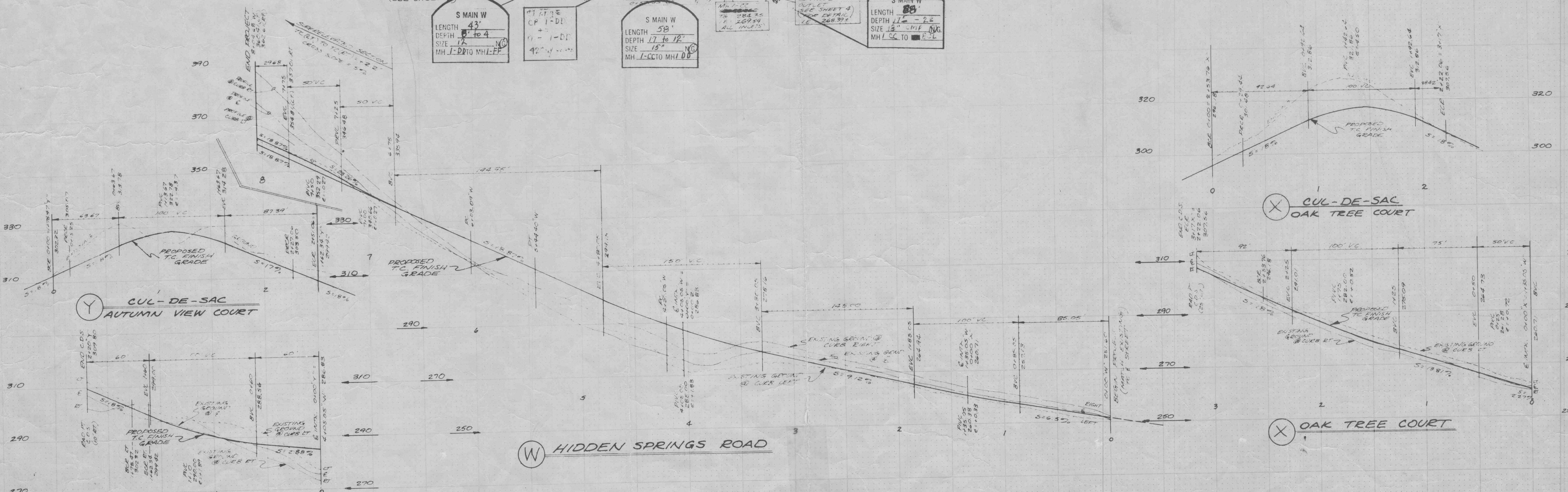
JOB NO. 3-134-70  
DESIGNED - JAE  
DRAWN - EM-JAE  
COMP. - JAE  
CHECKED - GT-G  
DATE - APRIL, 1977  
SHEET NO.

2

2 OF 9 SHEETS

## PROFILE SCALE

1" = 50' HORIZ.  
1" = 20' VERT.

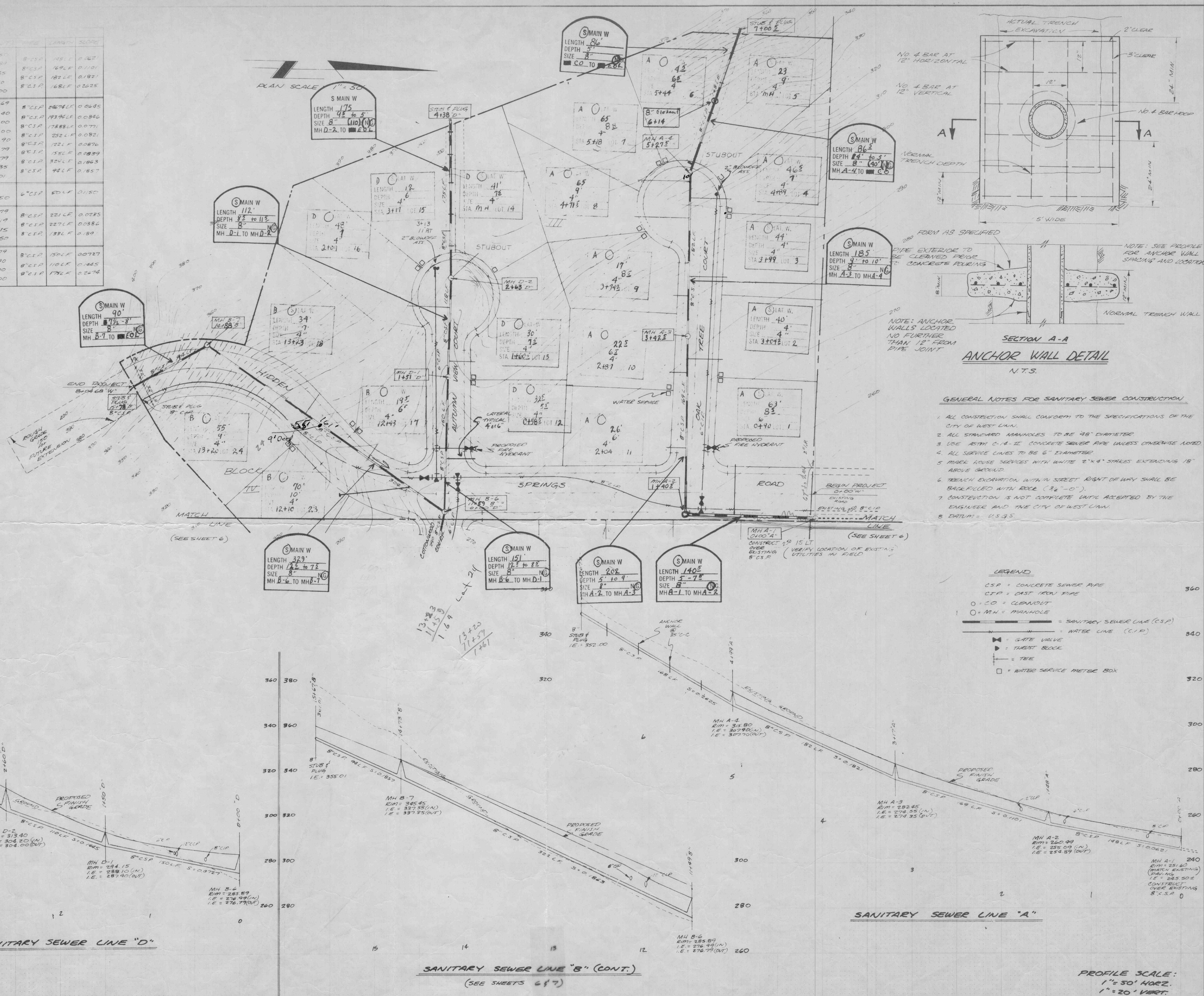








EXISTING MH	LENGTH	DEPTH	SIZE	DATE	SCOPE
EXISTING MH	04.00' B"	184.69	8" C.S.P.	198.1	0.0685
MH B-1	04.00' B"	201.60	8" C.S.P.	169.1	0.1101
MH B-2	04.00' B"	218.20	8" C.S.P.	182.1	0.1921
MH B-3	04.00' B"	232.00	8" C.S.P.	168.1	0.2625
MH B-4	04.00' B"	252.10	8" C.S.P.	174.1	0.0685
MH B-5	04.00' B"	263.99	8" C.S.P.	174.1	0.0846
MH B-6	04.00' B"	276.79	8" C.S.P.	174.1	0.0771
MH B-7	04.00' B"	287.90	8" C.S.P.	174.1	0.0821
MH B-8	04.00' B"	297.00	8" C.S.P.	174.1	0.0876
MH B-9	04.00' B"	304.00	8" C.S.P.	174.1	0.0839
MH B-10	04.00' B"	311.00	8" C.S.P.	174.1	0.1863
MH B-11	04.00' B"	318.00	8" C.S.P.	174.1	0.1857
MH B-12	04.00' B"	325.00	8" C.S.P.	174.1	0.1857
MH B-13	04.00' B"	332.00	8" C.S.P.	174.1	0.1857
MH B-14	04.00' B"	339.00	8" C.S.P.	174.1	0.1857
MH B-15	04.00' B"	346.00	8" C.S.P.	174.1	0.1857
MH B-16	04.00' B"	353.00	8" C.S.P.	174.1	0.1857
MH B-17	04.00' B"	360.00	8" C.S.P.	174.1	0.1857
MH B-18	04.00' B"	367.00	8" C.S.P.	174.1	0.1857
MH B-19	04.00' B"	374.00	8" C.S.P.	174.1	0.1857
MH B-20	04.00' B"	381.00	8" C.S.P.	174.1	0.1857
MH B-21	04.00' B"	388.00	8" C.S.P.	174.1	0.1857
MH B-22	04.00' B"	395.00	8" C.S.P.	174.1	0.1857
MH B-23	04.00' B"	402.00	8" C.S.P.	174.1	0.1857
MH B-24	04.00' B"	409.00	8" C.S.P.	174.1	0.1857
MH B-25	04.00' B"	416.00	8" C.S.P.	174.1	0.1857
MH B-26	04.00' B"	423.00	8" C.S.P.	174.1	0.1857
MH B-27	04.00' B"	430.00	8" C.S.P.	174.1	0.1857
MH B-28	04.00' B"	437.00	8" C.S.P.	174.1	0.1857
MH B-29	04.00' B"	444.00	8" C.S.P.	174.1	0.1857
MH B-30	04.00' B"	451.00	8" C.S.P.	174.1	0.1857
MH B-31	04.00' B"	458.00	8" C.S.P.	174.1	0.1857
MH B-32	04.00' B"	465.00	8" C.S.P.	174.1	0.1857
MH B-33	04.00' B"	472.00	8" C.S.P.	174.1	0.1857
MH B-34	04.00' B"	479.00	8" C.S.P.	174.1	0.1857
MH B-35	04.00' B"	486.00	8" C.S.P.	174.1	0.1857
MH B-36	04.00' B"	493.00	8" C.S.P.	174.1	0.1857
MH B-37	04.00' B"	500.00	8" C.S.P.	174.1	0.1857
MH B-38	04.00' B"	507.00	8" C.S.P.	174.1	0.1857
MH B-39	04.00' B"	514.00	8" C.S.P.	174.1	0.1857
MH B-40	04.00' B"	521.00	8" C.S.P.	174.1	0.1857
MH B-41	04.00' B"	528.00	8" C.S.P.	174.1	0.1857
MH B-42	04.00' B"	535.00	8" C.S.P.	174.1	0.1857
MH B-43	04.00' B"	542.00	8" C.S.P.	174.1	0.1857
MH B-44	04.00' B"	549.00	8" C.S.P.	174.1	0.1857
MH B-45	04.00' B"	556.00	8" C.S.P.	174.1	0.1857
MH B-46	04.00' B"	563.00	8" C.S.P.	174.1	0.1857
MH B-47	04.00' B"	570.00	8" C.S.P.	174.1	0.1857
MH B-48	04.00' B"	577.00	8" C.S.P.	174.1	0.1857
MH B-49	04.00' B"	584.00	8" C.S.P.	174.1	0.1857
MH B-50	04.00' B"	591.00	8" C.S.P.	174.1	0.1857
MH B-51	04.00' B"	598.00	8" C.S.P.	174.1	0.1857
MH B-52	04.00' B"	605.00	8" C.S.P.	174.1	0.1857
MH B-53	04.00' B"	612.00	8" C.S.P.	174.1	0.1857
MH B-54	04.00' B"	619.00	8" C.S.P.	174.1	0.1857
MH B-55	04.00' B"	626.00	8" C.S.P.	174.1	0.1857
MH B-56	04.00' B"	633.00	8" C.S.P.	174.1	0.1857
MH B-57	04.00' B"	640.00	8" C.S.P.	174.1	0.1857
MH B-58	04.00' B"	647.00	8" C.S.P.	174.1	0.1857
MH B-59	04.00' B"	654.00	8" C.S.P.	174.1	0.1857
MH B-60	04.00' B"	661.00	8" C.S.P.	174.1	0.1857
MH B-61	04.00' B"	668.00	8" C.S.P.	174.1	0.1857
MH B-62	04.00' B"	675.00	8" C.S.P.	174.1	0.1857
MH B-63	04.00' B"	682.00	8" C.S.P.	174.1	0.1857
MH B-64	04.00' B"	689.00	8" C.S.P.	174.1	0.1857
MH B-65	04.00' B"	696.00	8" C.S.P.	174.1	0.1857
MH B-66	04.00' B"	703.00	8" C.S.P.	174.1	0.1857
MH B-67	04.00' B"	710.00	8" C.S.P.	174.1	0.1857
MH B-68	04.00' B"	717.00	8" C.S.P.	174.1	0.1857
MH B-69	04.00' B"	724.00	8" C.S.P.	174.1	0.1857
MH B-70	04.00' B"	731.00	8" C.S.P.	174.1	0.1857
MH B-71	04.00' B"	738.00	8" C.S.P.	174.1	0.1857
MH B-72	04.00' B"	745.00	8" C.S.P.	174.1	0.1857
MH B-73	04.00' B"	752.00	8" C.S.P.	174.1	0.1857
MH B-74	04.00' B"	759.00	8" C.S.P.	174.1	0.1857
MH B-75	04.00' B"	766.00	8" C.S.P.	174.1	0.1857
MH B-76	04.00' B"	773.00	8" C.S.P.	174.1	0.1857
MH B-77	04.00' B"	780.00	8" C.S.P.	174.1	0.1857
MH B-78	04.00' B"	787.00	8" C.S.P.	174.1	0.1857
MH B-79	04.00' B"	794.00	8" C.S.P.	174.1	0.1857
MH B-80	04.00' B"	801.00	8" C.S.P.	174.1	0.1857
MH B-81	04.00' B"	808.00	8" C.S.P.	174.1	0.1857
MH B-82	04.00' B"	815.00	8" C.S.P.	174.1	0.1857
MH B-83	04.00' B"	822.00	8" C.S.P.	174.1	0.1857
MH B-84	04.00' B"	829.00	8" C.S.P.	174.1	0.1857
MH B-85	04.00' B"	836.00	8" C.S.P.	174.1	0.1857
MH B-86	04.00' B"	843.00	8" C.S.P.	174.1	0.1857
MH B-87	04.00' B"	850.00	8" C.S.P.	174.1	0.1857
MH B-88	04.00' B"	857.00	8" C.S.P.	174.1	0.1857
MH B-89	04.00' B"	864.00	8" C.S.P.	174.1	0.1857
MH B-90	04.00' B"	871.00	8" C.S.P.	174.1	0.1857
MH B-91	04.00' B"	878.00	8" C.S.P.	174.1	0.1857
MH B-92	04.00' B"	885.00	8" C.S.P.	174.1	0.1857
MH B-93	04.00' B"	892.00	8" C.S.P.	174.1	0.1857
MH B-94	04.00' B"	899.00	8" C.S.P.	174.1	0.1857
MH B-95	04.00' B"	906.00	8" C.S.P.	174.1	0.1857
MH B-96	04.00' B"	913.00	8" C.S.P.	174.1	0.1857
MH B-97	04.00' B"	920.00	8" C.S.P.	174.1	0.1857
MH B-98	04.00' B"	927.00	8" C.S.P.	174.1	0.1857
MH B-99	04.00' B"	934.00	8" C.S.P.	174.1	0.1857
MH B-100	04.00' B"	941.00	8" C.S.P.	174.1	0.1857



REVISIONS

NO.	DESCRIPTION/DATE	BY

643-5475

sea

Ginther/SEA, Inc.

3800 Cedar Hills Blvd.

Suite 276

Beaverton, OR. 97005

ROBINWOOD

ESTATES No. II

sanitary sewer and water system

JOB NO. 3-184-1-1

DESIGNED JAR

DRAWN JAR, KPM

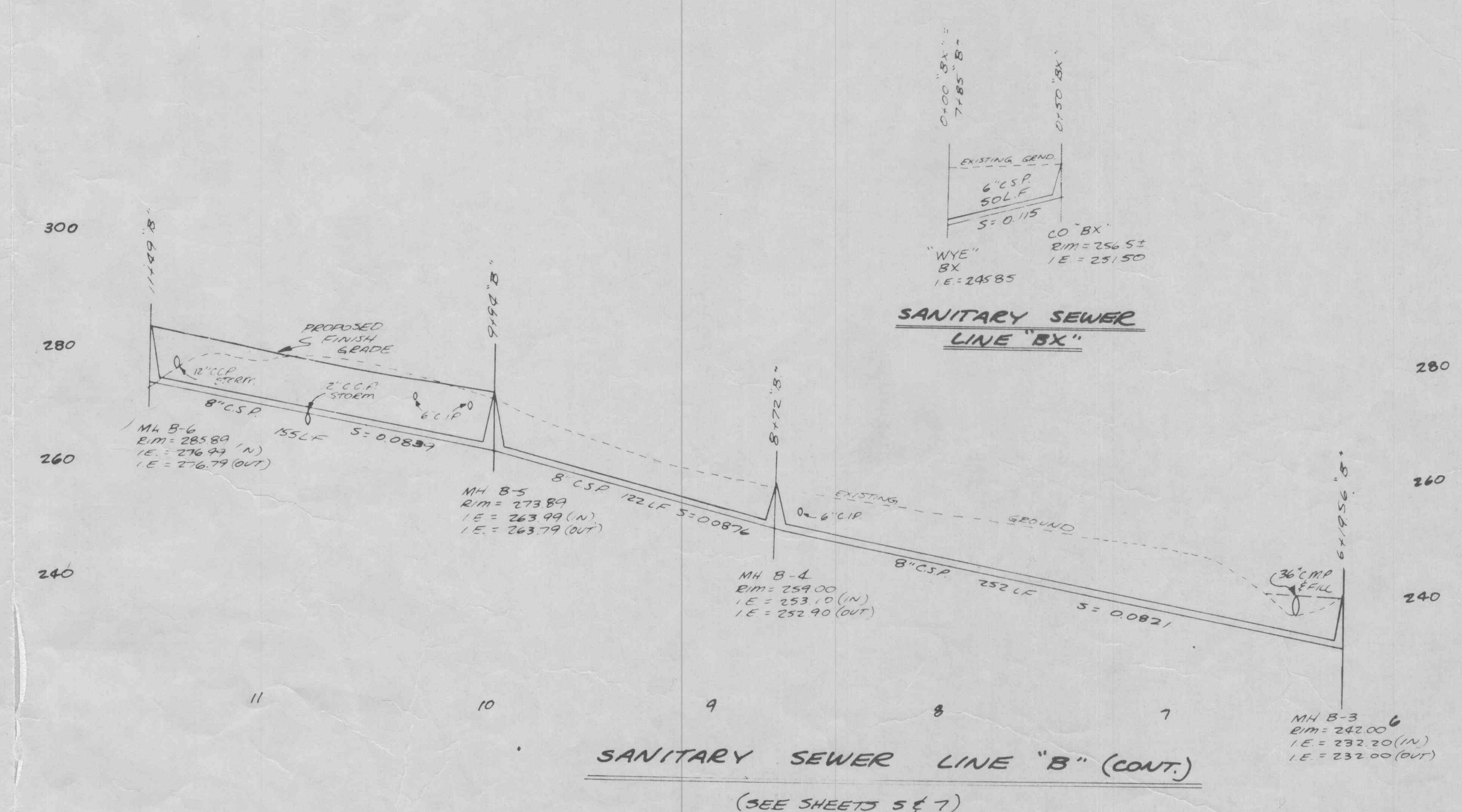
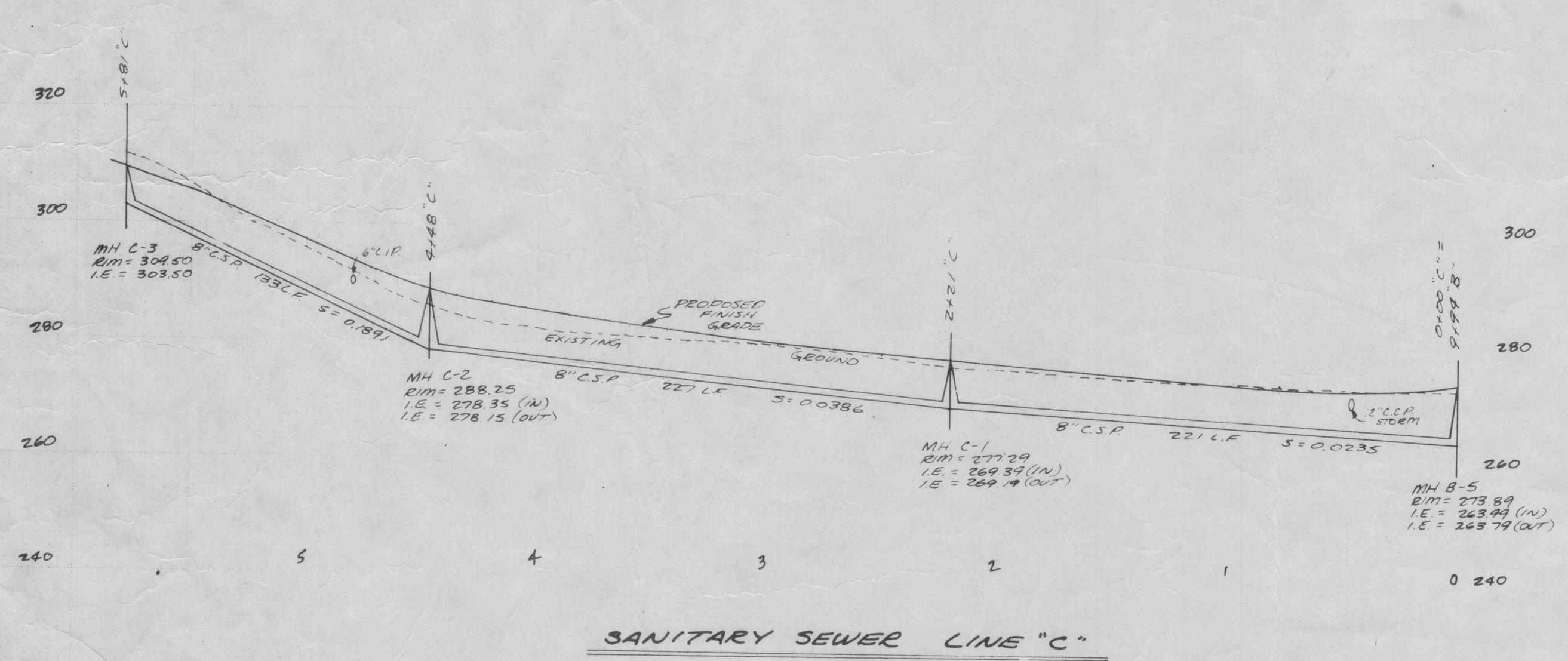
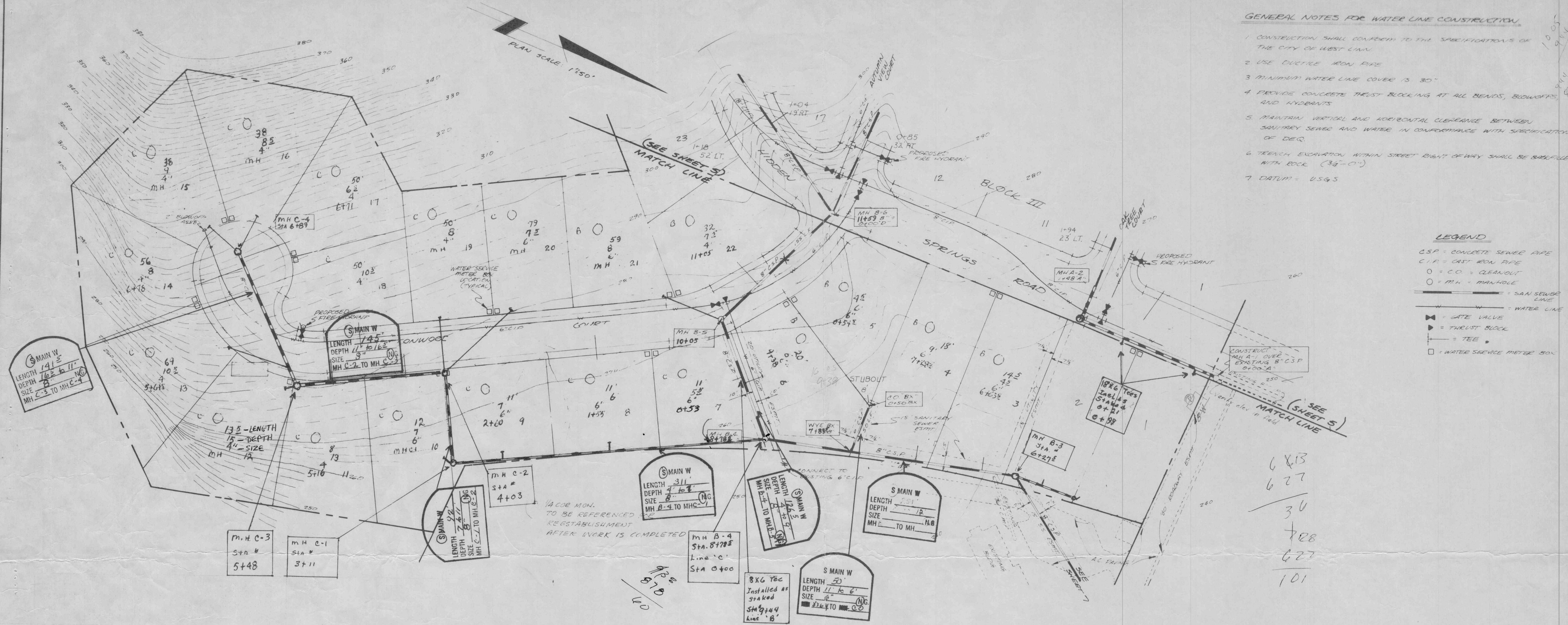
COMP. JAR

CHECKED GTS

DATE APRIL, 1977

SHEET NO.





PROFILE SCALE:  
1"=50' HORIZ.  
1"=20' VERT.

REVISIONS

NO.	DESCRIPTION/DATE	BY

643-5475

sea

Ginther / SEA, Inc.  
3800 Cedar Hills Blvd.  
Suite 276  
Beaverton, OR. 97005

ROBINWOOD

ESTATES No. II

sanitary sewer and water system

JOB NO. 3-134-1-741

DESIGNED JAE

DRAWN JAE, K.M.

COMP. JAE

CHECKED G.T.G.

DATE APRIL 1977

SHEET NO.

6

OF 9 SHEETS



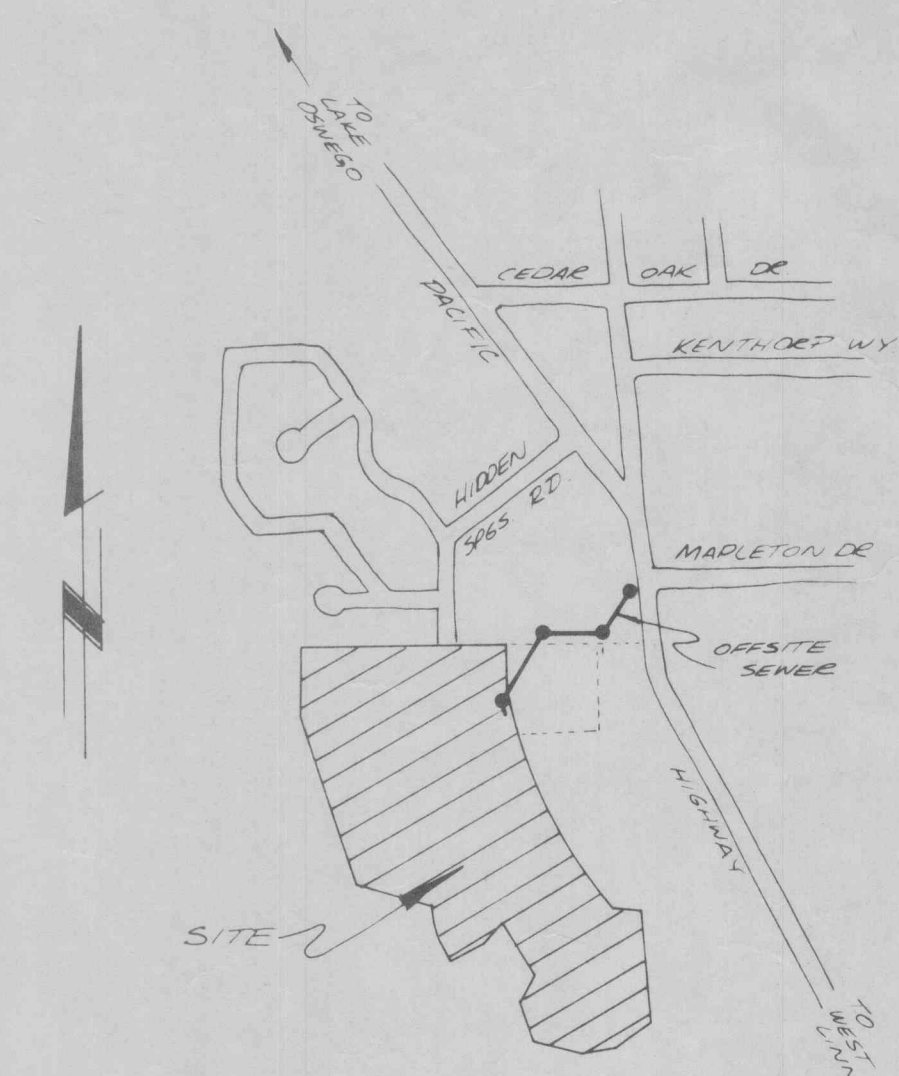
NO.	DESCRIPTION/DATE	BY

See 17

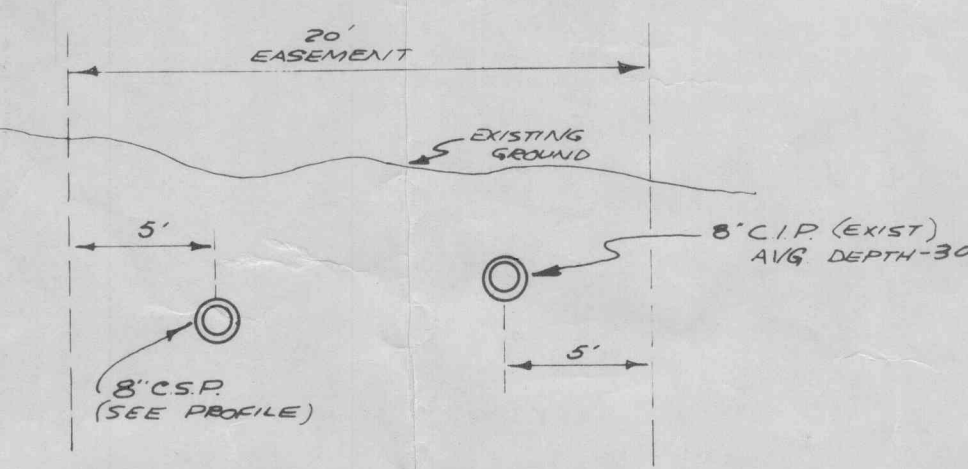
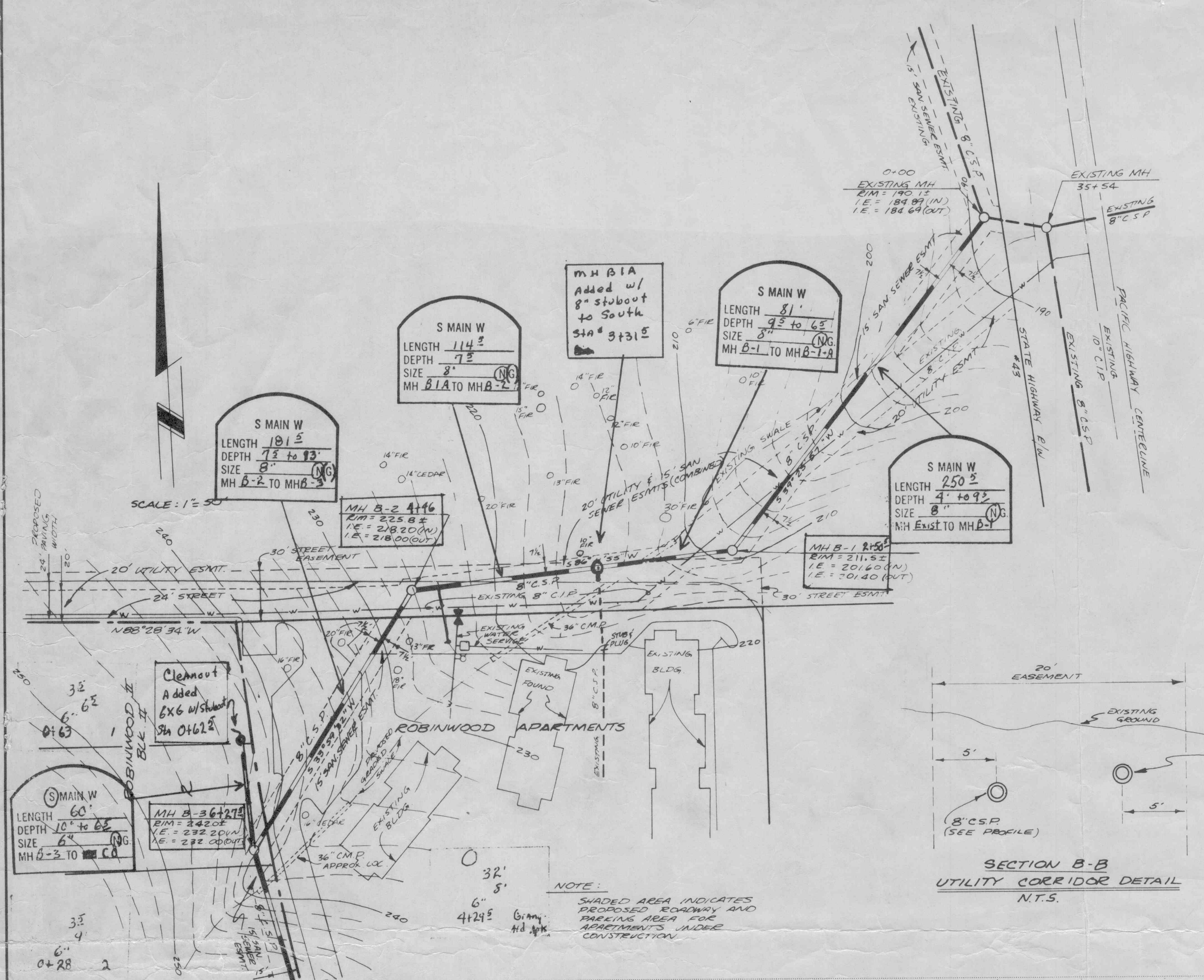
643-5475  
 Sea  
 nther / SEA, Inc.  
 70 Cedar Hills Blvd.  
 276  
 ton, OR. 97005

# GENERAL SANITARY SEWER NOTES

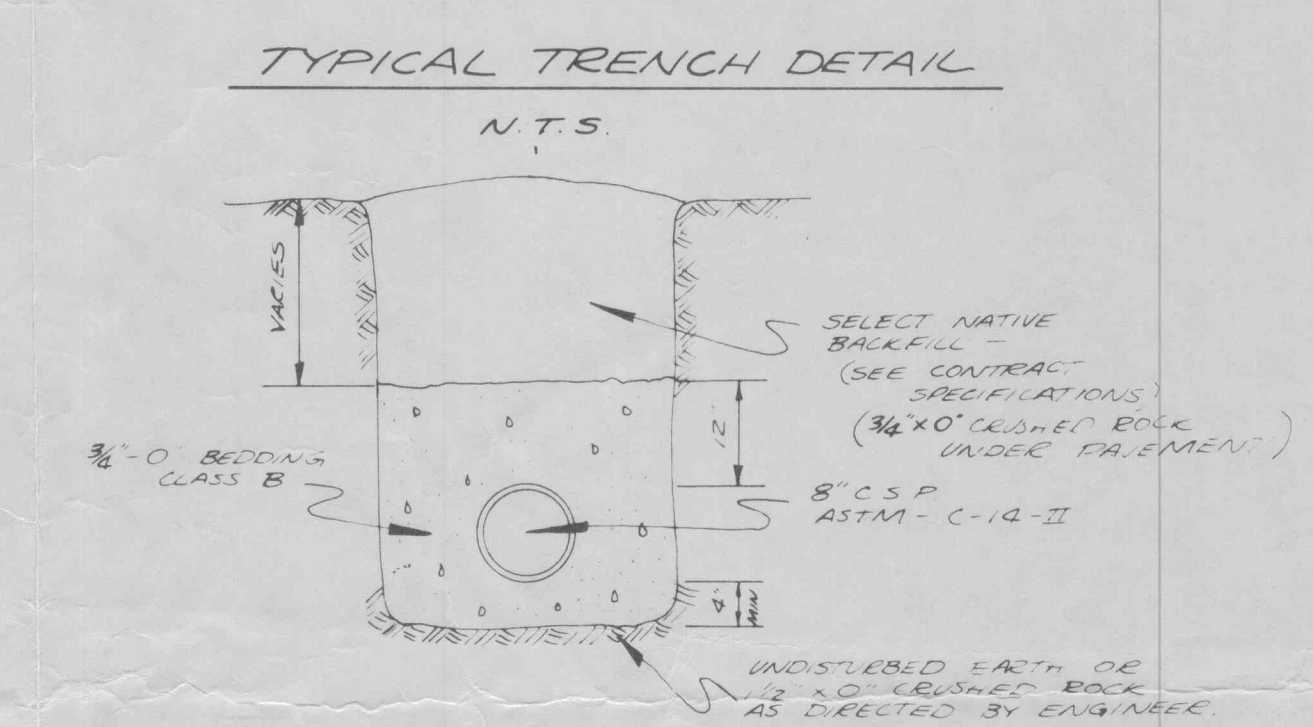
1. USE ASTM C-14-II CONCRETE SEWER PIPE (C.S.P.) UNLESS OTHERWISE NOTED.
2. CONSTRUCTION IS NOT COMPLETE UNTIL ACCEPTED BY THE ENGINEER.
3. ALL CONSTRUCTION SHALL CONFORM TO THE SPECIFICATIONS OF THE CITY OF WEST Linn.
4. TRENCH EXCAVATION WITHIN STREET RIGHT OF WAY SHALL BE BACKFILLED WITH SELECT BACKFILL (3/4" x 0" CRUSHED ROCK).
5. DATUM - U.S.G.S.
6. BENCH MARK - 1) PL NAIL, END OF PAVING (ROBINWOOD ESTATES) @ 2 HIDDEN SPRINGS ROAD, ELEV. = 251.57.  
 2) RIM OF EXISTING MANHOLE 35+54 ALONG SHOULDER OF PACIFIC HIGHWAY NO. 43, ELEV. = 190.45.  
 3) RE SPIKE IN 16" FIR, LOT 32 ROBINWOOD ESTATES, ELEV. = 258.82.



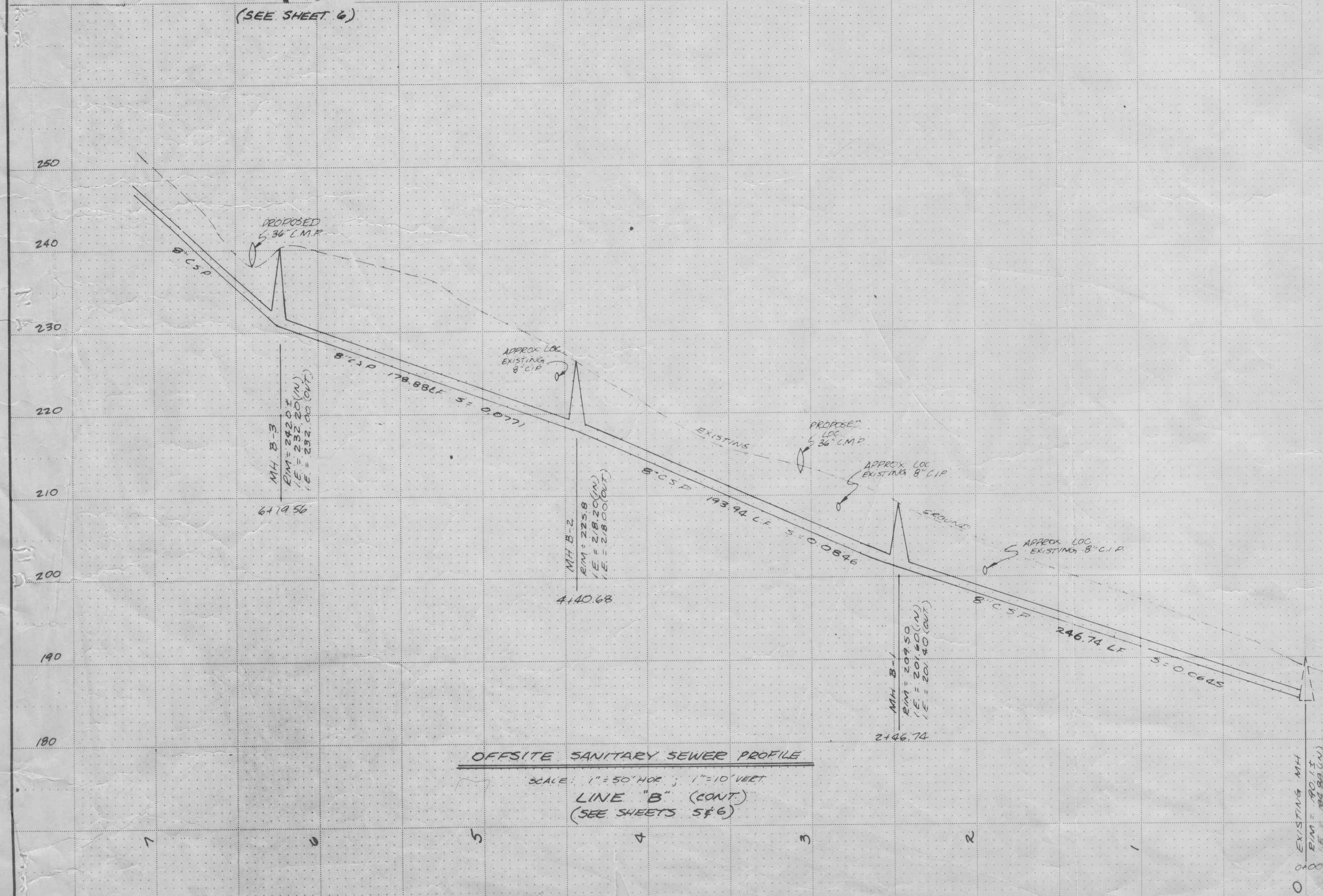
VICINITY MAP



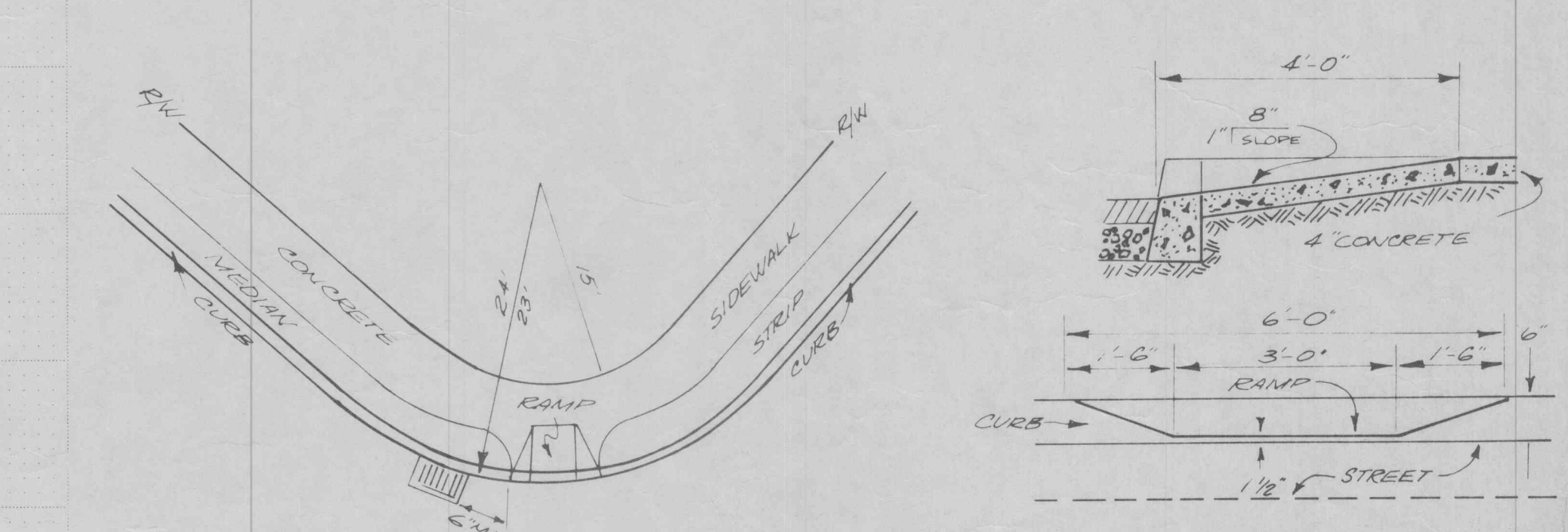
SECTION B-B  
 UTILITY CORRIDOR DETAIL  
 N.T.S.



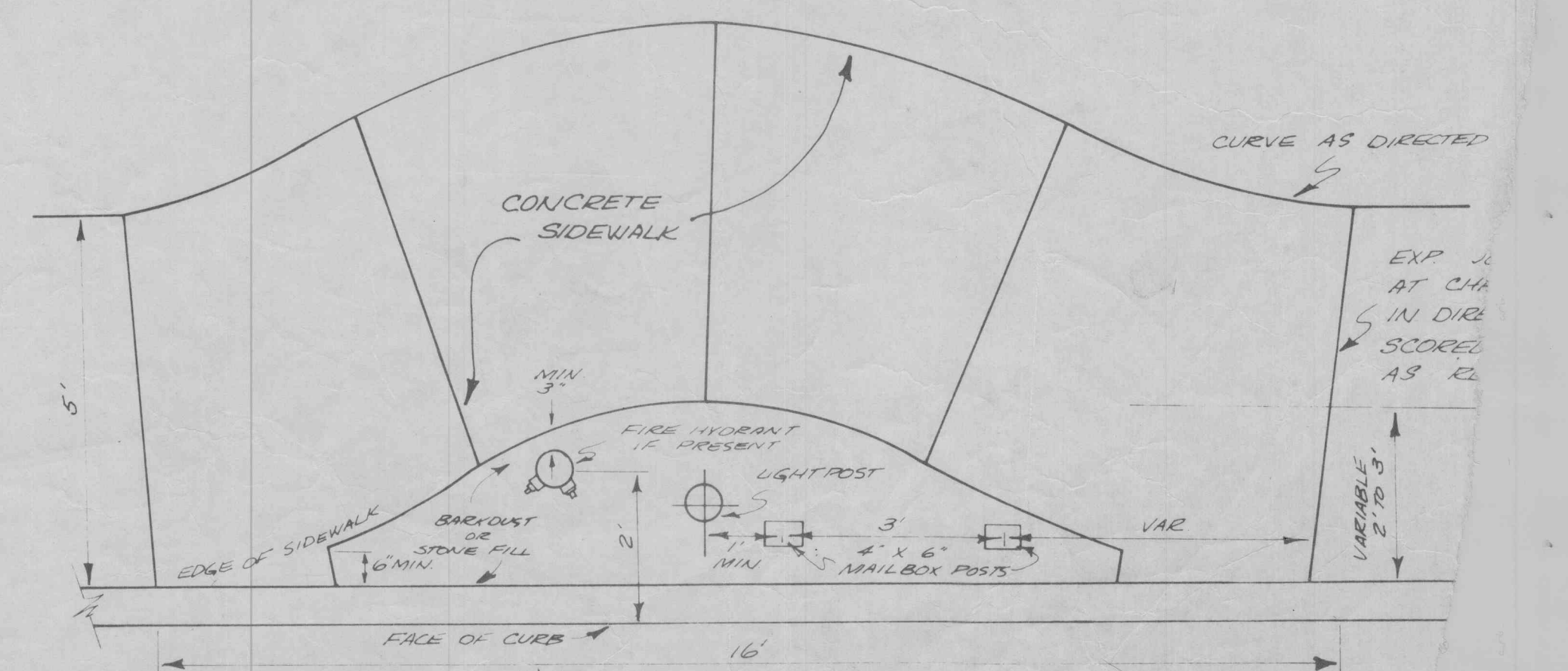
TYPICAL TRENCH DETAIL  
 N.T.S.



OFFSITE SANITARY SEWER PROFILE  
 SCALE: 1"=50' HORIZ, 1"=10' VERT  
 LINE "B" (CONT)  
 (SEE SHEETS 546)



TYPICAL WHEELCHAIR RAMP  
 N.T.S.



SIDEWALK ISLAND PLAN  
 SCALE: 1"=2'