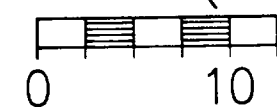
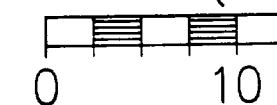


SCALE: 1' = 10' (FULL SIZE)



SCALE: 1' = 10' (FULL SIZE)

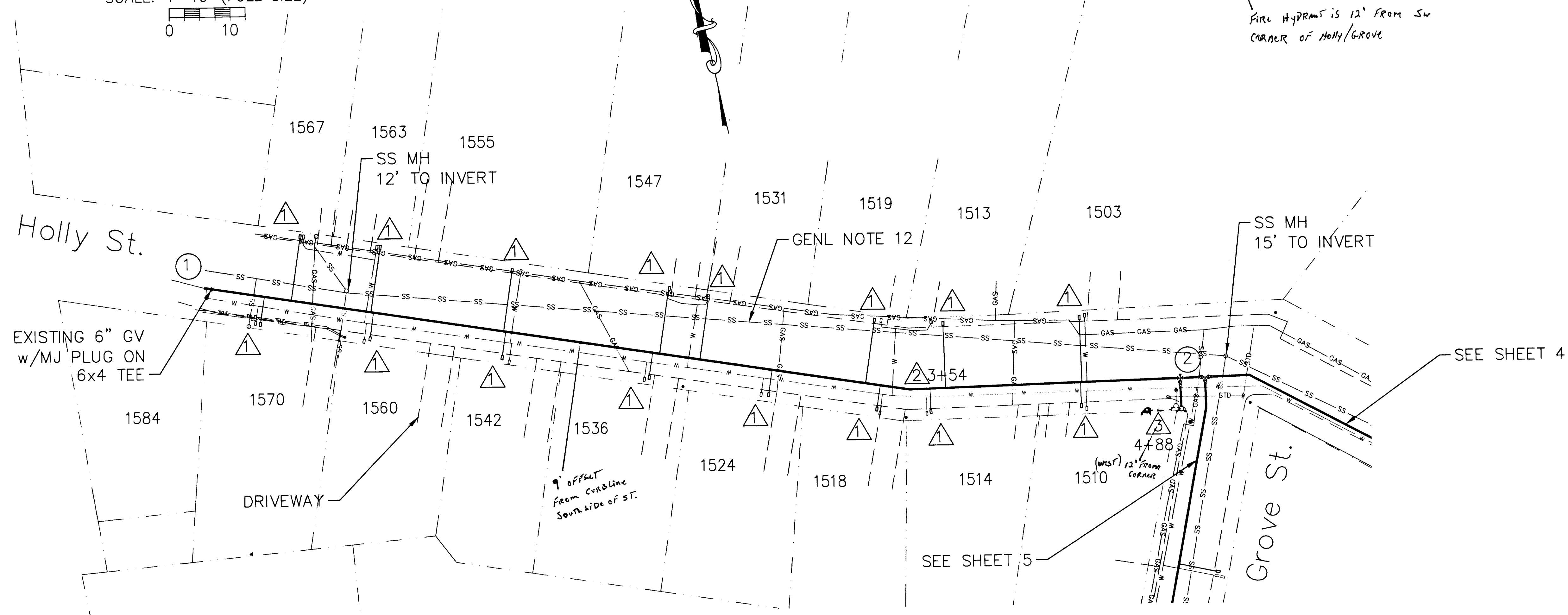


1. INSTALL NEW WATER SERVICE AND METER BOX PER
DETAIL WL-402. EXACT LOCATION TO BE DETERMINED
BY CITY IN FIELD. CITY TO PROVIDE METER AND
CONNECT BACKSIDE TO CUSTOMER SERVICE.
CONTRACTOR TO EXCAVATE FOR BACKSIDE CONNECTION
AND RESTORE.

2 INSTALL 6" MJ 11-1/4" BEND. RESTRAIN JOINTS PER
GENL NOTE 13.

3 INSTALL FIRE HYDRANT ASSEMBLY PER DETAIL WL 401.

FIRE HYDRANT IS 12' FROM SW CORNER OF HOLLY GROVE



SCALE: 1' = 30' (FULL SIZE)



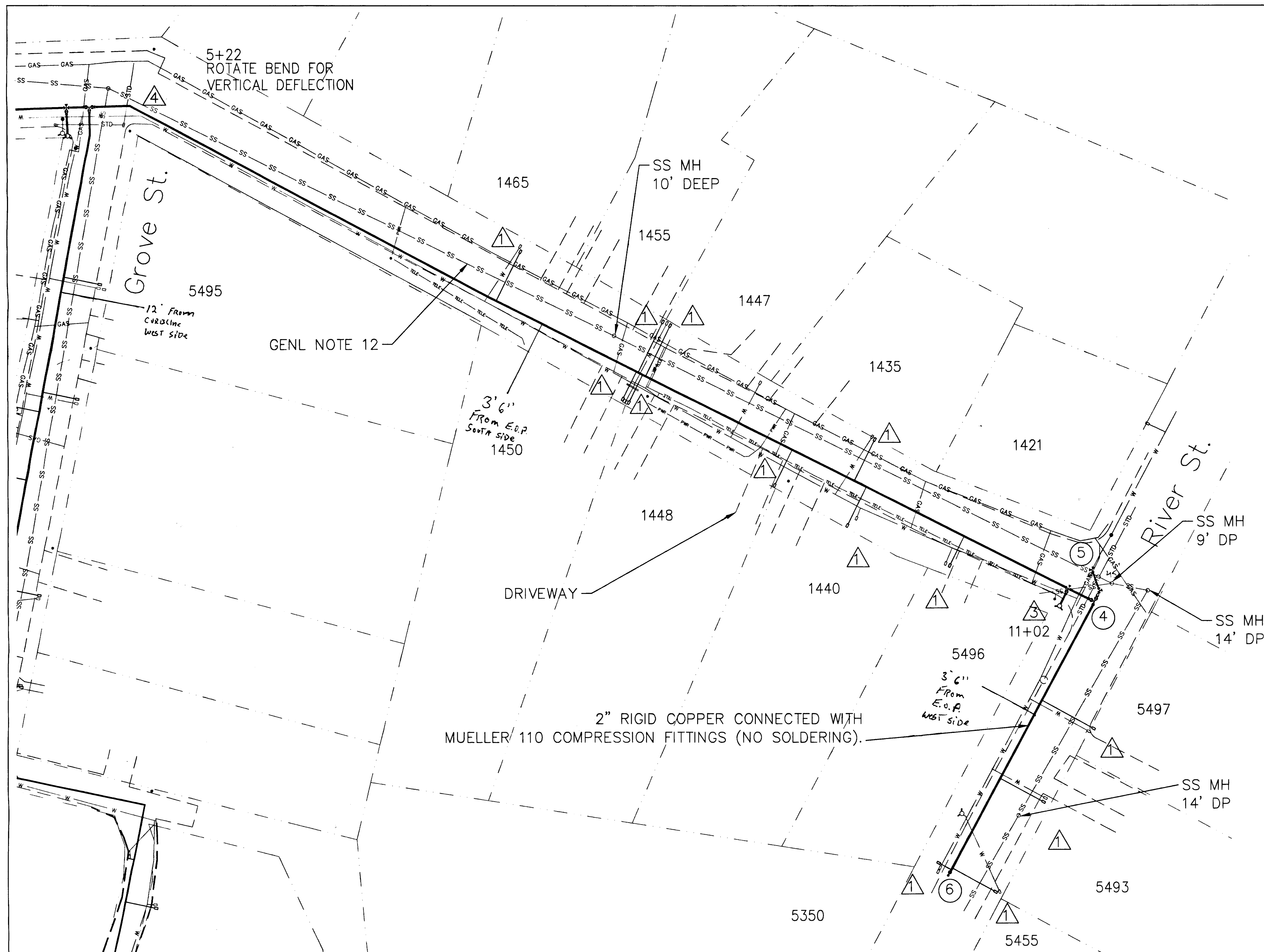
| REVISION | DATE |
|----------|------|
|----------|------|

| | |
|-----------|--------|
| | |
| | |
| — | 1-28-0 |
| DRAWN: GP | |
| CHECKED: | |

HOLLY-GROVE WATER MAIN
PROJECT PW0503-05
WEST LINN

SCALE: AS NOTED

SHEET: 3 of 5

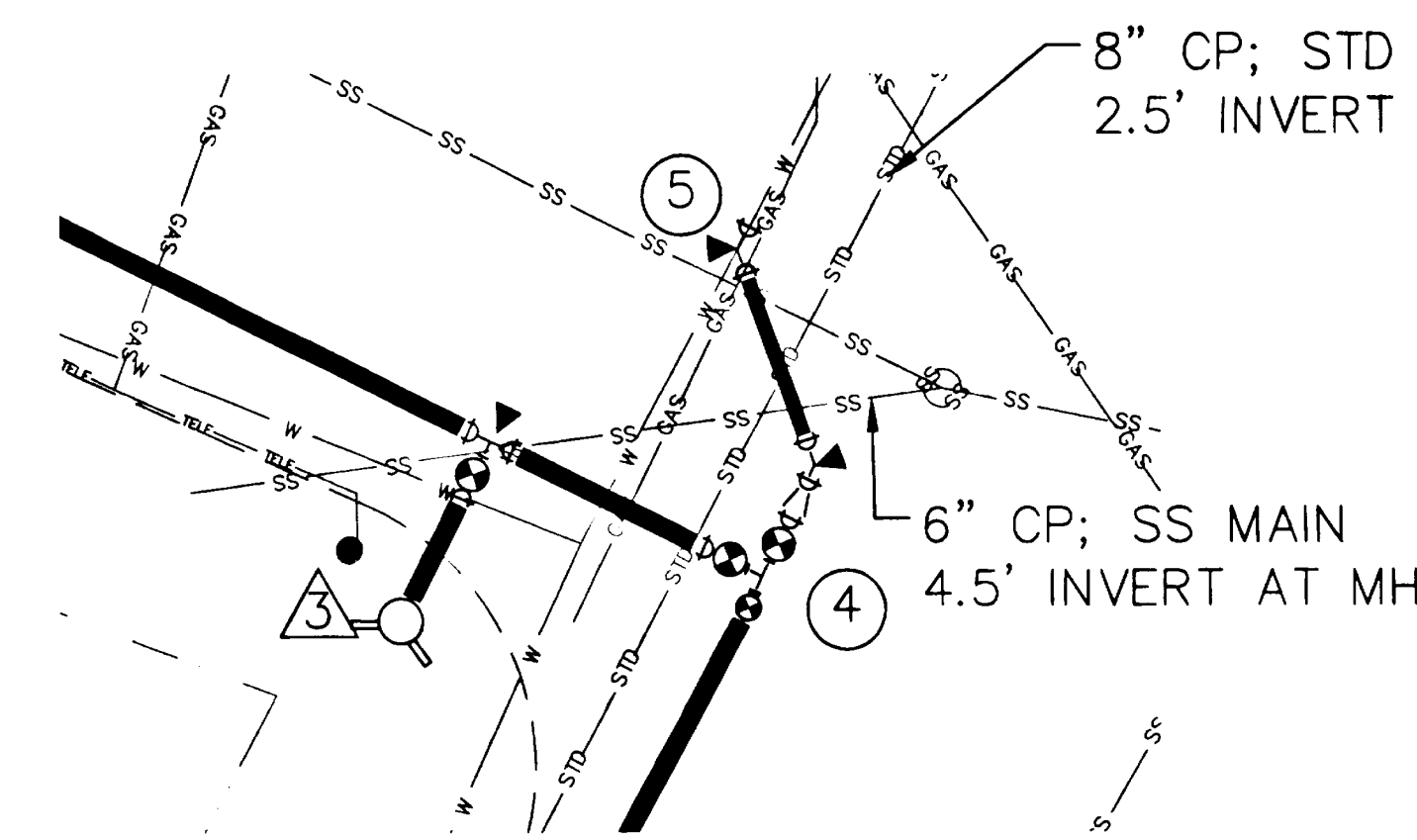


PLAN 4-A
SCALE: 1"=30' (FULL SIZE)

⑥ INSTALL PERMANENT 2" BLOW-OFF ASSEMBLY SIMILAR TO DETAIL WL-404A.

CONSTRUCTION NOTES

- ① INSTALL NEW WATER SERVICE AND METER BOX PER DETAIL WL-402. EXACT LOCATION TO BE DETERMINED BY CITY IN FIELD. CITY TO PROVIDE METER AND CONNECT BACKSIDE TO CUSTOMER SERVICE. CONTRACTOR TO EXCAVATE FOR BACKSIDE CONNECTION AND RESTORE. (13 PLACES)
- ③ INSTALL FIRE HYDRANT ASSEMBLY PER DETAIL WL 401.
- ④ INSTALL 6" MJ 45° BEND. RESTRAIN JOINTS PER GENL NOTE 13.



DETAIL 4-B; CONNECTION

SCALE: 1"=10' (FULL SIZE)

- ④ 11+18
INSTALL 6" FLG TEE w/TWO 6" GV (FLGxMJ) AND BLIND FLANGE (SOUTH). 6"x4" REDUCER (PExSMALL END MJ); 4"-45° BEND (PExMJ); THRUST BLOCK; 4" DIP TO SUIT (NORTH). TAP BLIND FLANGE FOR 2" BRASS NIPPLE AND 2" GV SIMILAR TO DETAIL WL-403.
- ⑤ CONNECT TO EXISTING SYSTEM AFTER TESTING COMPLETE. 4"-45° BEND (MJxMJ), THRUST BLOCK.

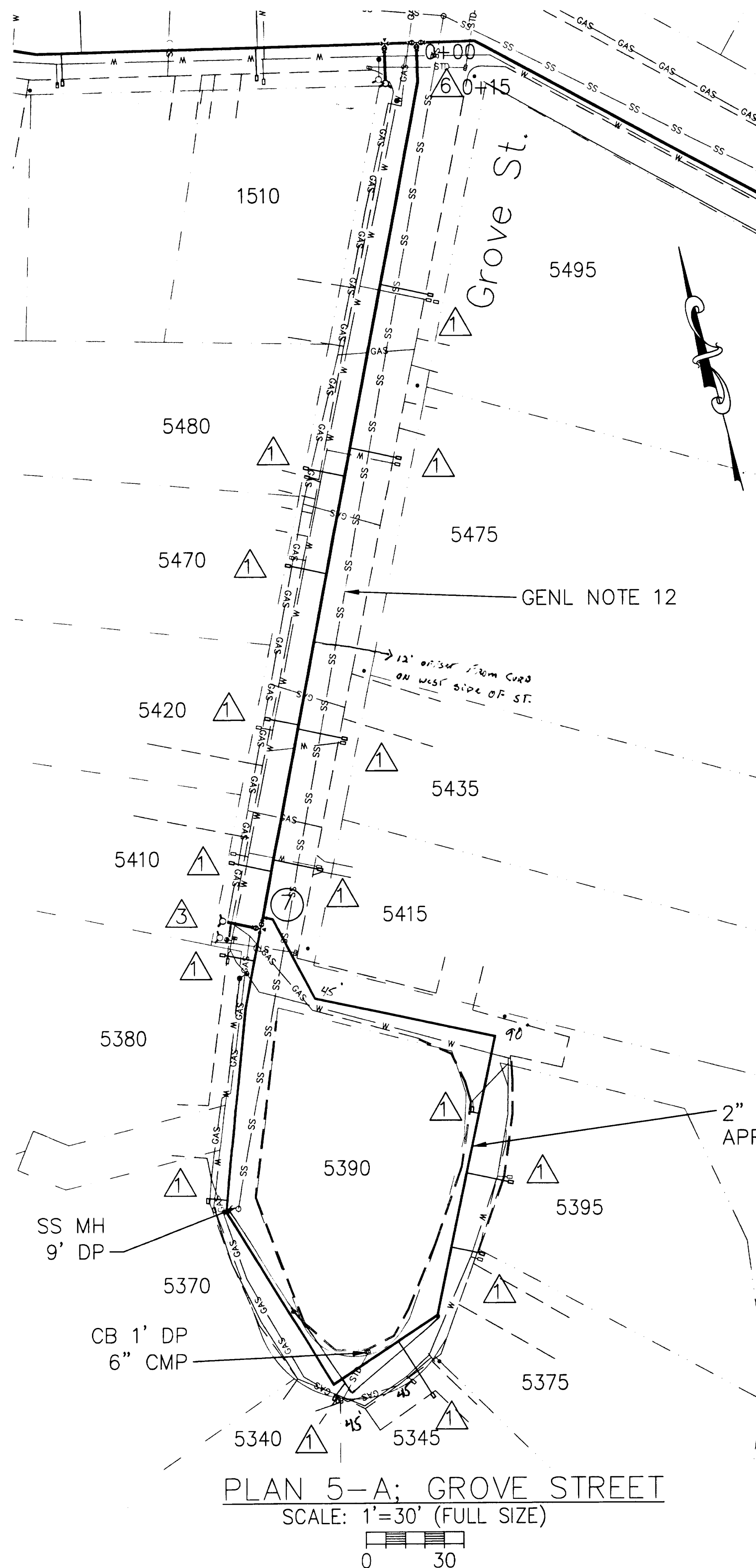
REVISION DATE

| | |
|-----------|---------|
| | |
| | |
| - | 1-28-05 |
| DRAWN: GP | |
| CHECKED: | |

HOLLY-GROVE WATER MAIN
PROJECT PW0503-4
WEST LINN

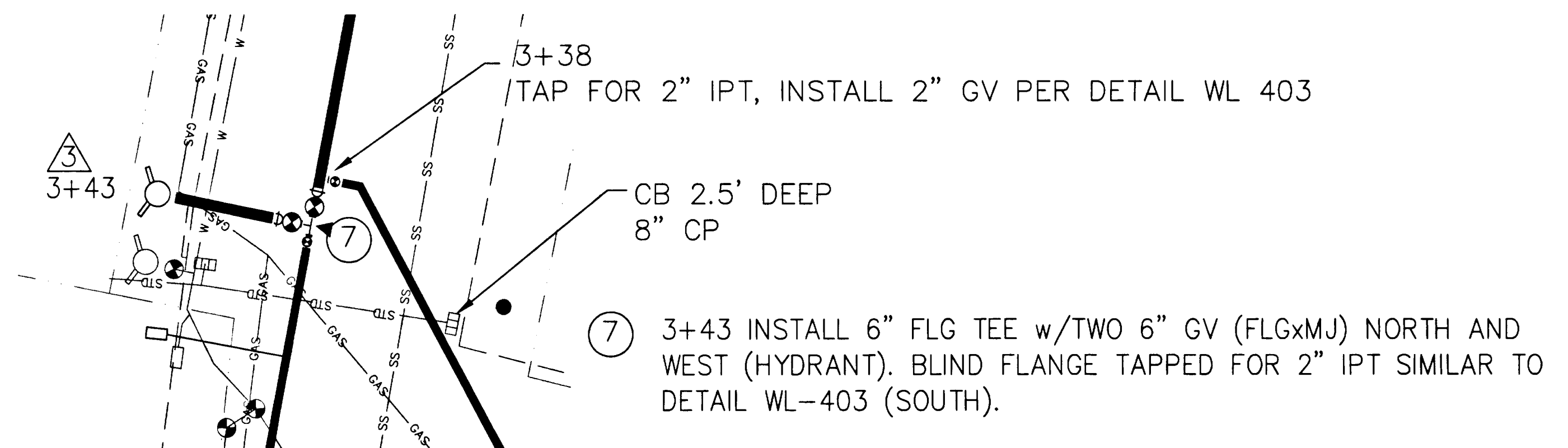
SCALE: AS NOTED

SHEET: 4 OF 5



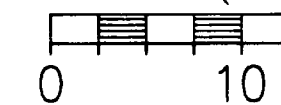
CONSTRUCTION NOTES

- 1 INSTALL NEW WATER SERVICE AND METER BOX PER DETAIL WL-402. EXACT LOCATION TO BE DETERMINED BY CITY IN FIELD. CITY TO PROVIDE METER AND CONNECT BACKSIDE TO CUSTOMER SERVICE. CONTRACTOR TO EXCAVATE FOR BACKSIDE CONNECTION AND RESTORE.
- 3 INSTALL FIRE HYDRANT ASSEMBLY PER DETAIL WL-401.
- 6 INSTALL 22 1/2" BEND, RESTRAIN JOINTS PER GENL NOTE 13.



DETAIL 5-B

SCALE: 1"=10' (FULL SIZE)



2" RIGID COPPER CONNECTED WITH MUELLER 110 COMPRESSION FITTINGS (NO SOLDERING). APPROXIMATE LAYOUT SHOWN, MINIMIZE BENDS, POUR THRUST BLOCKS AT BENDS.

REVISION DATE

| | | |
|-----------|---------|--|
| | | HOLLY-GROVE WATER MAIN PROJECT PW0503-04 WEST LINN |
| | | |
| - | 1-28-05 | |
| DRAWN: GP | | |
| CHECKED: | | SCALE: AS NOTED |
| | | SHEET: 5 of 5 |