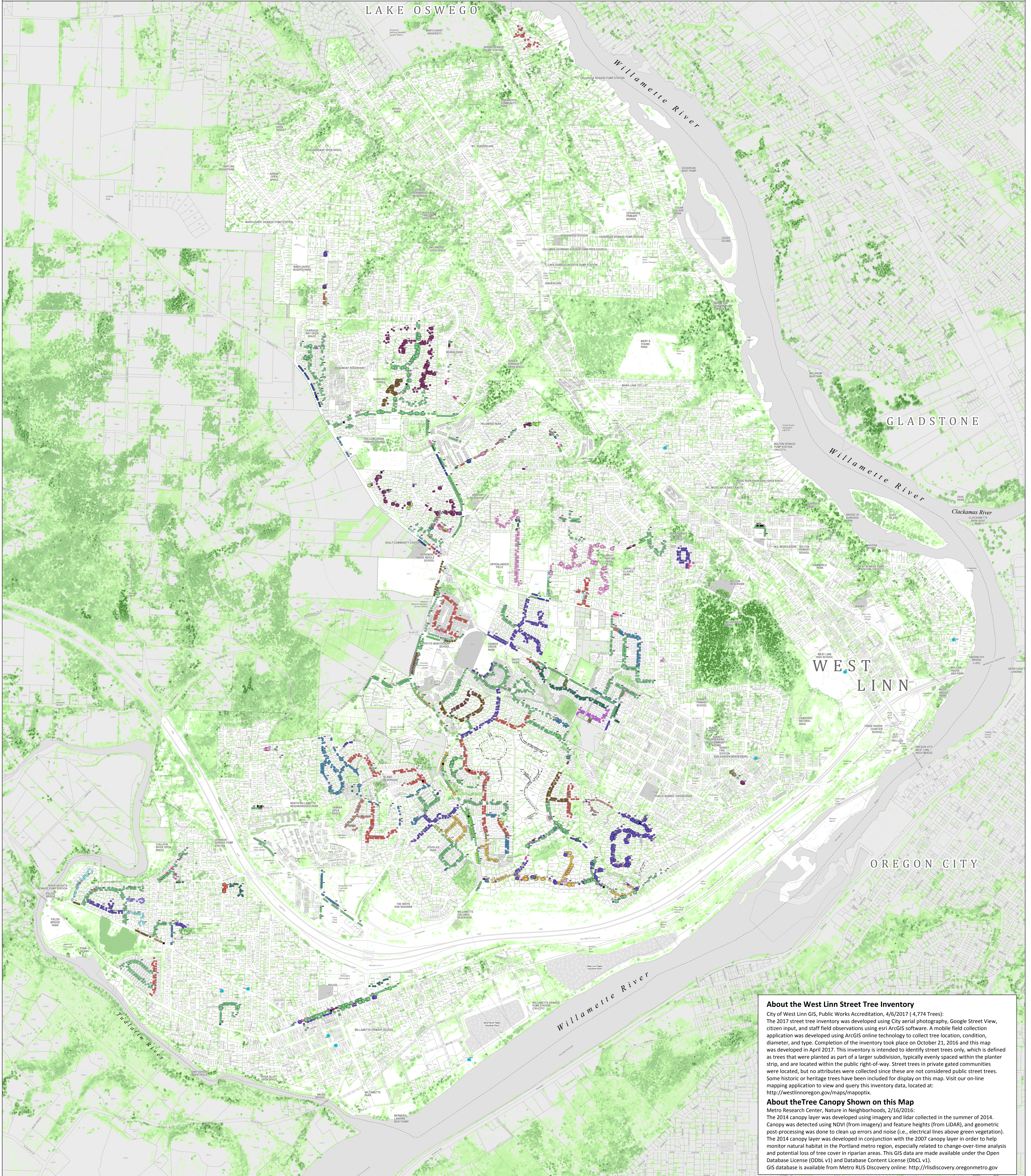
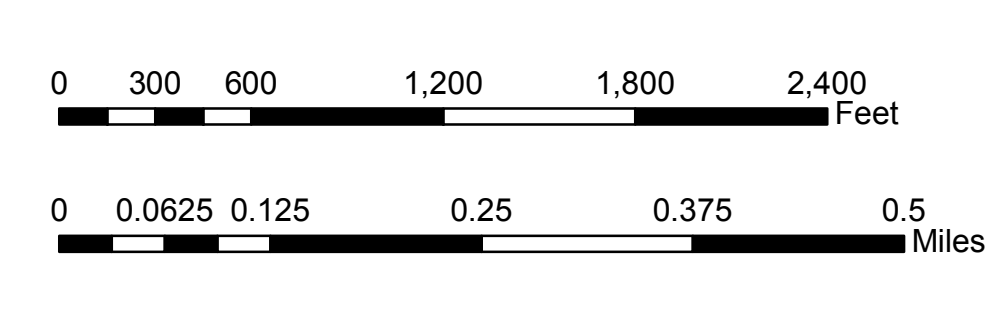


# Street Tree Inventory Map with Tree Canopy Overlay



**About the West Linn Street Tree Inventory**  
 City of West Linn GIS, Public Works Accreditation, 4/6/2017 (4,774 Trees):  
 The 2017 street tree inventory was developed using City aerial photography, Google Street View, citizen input, and staff field observations using esri ArcGIS software. A mobile field collection application was developed using ArcGIS online technology to collect tree location, condition, diameter, and type. Completion of the inventory took place on October 21, 2016 and this map was developed in April 2017. This inventory is intended to identify street trees only, which is defined as trees that were planted as part of a larger subdivision, typically evenly spaced within the planter strip, and are located within the public right-of-way. Street trees in private gated communities were located, but no attributes were collected since these are not considered public street trees. Some historic or heritage trees have been included for display on this map. Visit our on-line mapping application to view and query this inventory data, located at: <http://westlinn.gov/maps/mapotix>.

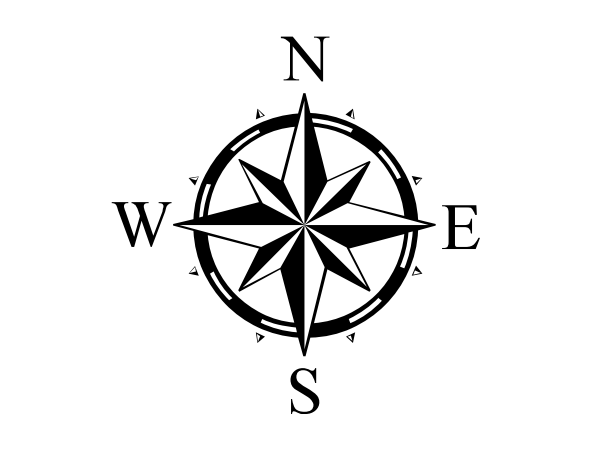
**About the Tree Canopy Shown on this Map**  
 Metro Research Center, Nature in Neighborhoods, 2/16/2016:  
 The 2014 canopy layer was developed using imagery and lidar collected in the summer of 2014. Canopy was detected using NDVI (from imagery) and feature heights (from LiDAR), and geometric post-processing was done to clean up errors and noise (i.e., electrical lines above green vegetation). The 2014 canopy layer was developed in conjunction with the 2007 canopy layer in order to help monitor natural habitat in the Portland metro region, especially related to change-over-time analysis and potential loss of tree cover in riparian areas. This GIS data are made available under the Open Database License (ODbL v1) and Database Content License (DBCL v1).  
 The 2014 canopy layer was developed in conjunction with the 2007 canopy layer in order to help monitor natural habitat in the Portland metro region, especially related to change-over-time analysis and potential loss of tree cover in riparian areas. This GIS data are made available under the Open Database License (ODbL v1) and Database Content License (DBCL v1).  
 GIS database is available from Metro RUS Discovery online: <http://rusediscovery.oregonmetro.gov>



This product is for informational purposes and may not have been prepared for, or be suitable for, legal, engineering, or surveying purposes. Users of this information should review or consult the primary data and information sources to ascertain the usability of the information.

Tax Lot Parcel Base Map source: Clackamas County GIS Tree Canopy: Metro RUS Discovery All other map layers and map production: West Linn Inventory & GIS

## Map Legend



- Tax Lot Parcel Line & Road
- Structure
- Addresses
- Outside West Linn City Limits
- Private Road
- Unimproved Right-of-Way
- Stream
- River
- Pond
- City Owned Property

LOC: TREE\_INVENTORY/TREE\_INVENTORY\_2017/TL\_FINAL\_V3\_0410\_16X11\_4/6/2017

**Tree Canopy**  
 Shaded Range by Tree Height  
  
 Darker color, taller  
 Lighter color, shorter

## Data Summary

### Summary of Street Trees by Type

COMMON NAME	GENUS	MAP CODE (LABELLED ON MAP)	NUMBER OF TREES	%
MAPLE	ACER	MP	1927	40%
ASH	FRAXINUS	AS	583	12%
PEAR	PIRUS	PE	545	11%
OAK	QUERCUS	OK	316	7%
LOCUST	GLEDITSIA	LO	227	5%
PLUM	PRUNUS	PL	189	4%
CHERRY	PRUNUS	CH	187	4%
DOGWOOD	CORNUS	DG	178	4%
HORNBEAM	CARPINUS	HO	146	3%
SNOWBELL	STYRAX	SN	101	2%
BLACK TUPELO	NYSSA	BT	73	2%
BEECH	FAGUS	BE	61	1%
REDBUD	CERCIS	RE	61	1%
DOGWOOD	CORNUS	DG	60	1%
SWEETGUM	LIQUIDAMBAR	SW	36	1%
DOGWOOD	CORNUS	DG	34	1%
KATSURA	CERCIDIPHYLLUM	KA	29	1%
ELM	ULMUS	EL	16	0.3%
JAPANESE STEWARTIA	STEWARTIA	JS	16	0.3%
APPLE	MALUS	AP	15	0.3%
ARBORVITAE	THUJA	AR	15	0.3%
GINKGO	GINKGO	GI	7	0.1%
BIRCH	BETULA	BI	5	0.1%
CEDAR	CEDRUS	CE	4	0.1%
DOUGLAS FIR	PSEUDOTSUGA	DF	4	0.1%
PINE	PINUS	PI	4	0.1%
SPRUCE	PICEA	SP	4	0.1%
HORSCHESNUT	AESCULUS	HC	3	0.1%
MAGNOLIA	MAGNOLIA	MA	3	0.1%
WILLOW	SALIX	WI	3	0.1%
MULBERRY	MORUS	MU	2	0.1%

### Summary of Street Trees by Condition

CONDITION	NUMBER OF TREES	%
GOOD	3745	78.1%
POOR	987	20.8%
STUMP OR DEAD	20	0.4%
NOT RATED	2	0.0%

### Summary of Street Trees by Size (Diameter)

TREE DIAMETER (INCHES)	NUMBER OF TREES	%
6	2987	63%
12	1495	31%
18	222	5%
24	62	1%
30	5	0.1%
36	5	0.1%

### Summary of Street Trees by Type and Size

COMMON NAME	GENUS	MAP CODE (LABELLED ON MAP)	DIAMETER (INCHES)	NUMBER OF TREES	%
MAPLE	ACER	MP	6	1390	29.1%
MAPLE	ACER	MP	12	639	13.4%
PEAR	PIRUS	PE	6	429	9.0%
ASH	FRAXINUS	AS	6	326	6.8%
ASH	FRAXINUS	AS	12	195	4.1%
DOGWOOD	CORNUS	DG	6	165	3.5%
LOCUST	GLEDITSIA	LO	6	144	3.0%
CHERRY	PRUNUS	CH	6	142	3.0%
HORNBEAM	CARPINUS	HO	6	140	2.9%
OAK	QUERCUS	OK	12	140	2.9%
PEAR	PIRUS	PE	12	131	2.8%
PLUM	PRUNUS	PL	12	120	2.5%
SNOWBELL	STYRAX	SN	6	101	2.1%
CHERRY	PRUNUS	CH	12	83	1.7%
MAPLE	ACER	MP	12	77	1.6%
UNGEN	TILIA	LI	6	73	1.5%
BLACK TUPELO	NYSSA	BT	12	72	1.5%
LOCUST	GLEDITSIA	LO	12	69	1.4%
REDBUD	CERCIS	RE	6	59	1.2%
CHERRY	PRUNUS	CH	12	57	1.2%
PLUM	PRUNUS	PL	6	55	1.2%
ASH	FRAXINUS	AS	12	48	1.0%
BEECH	FAGUS	BE	6	45	0.9%
CHERRY	PRUNUS	CH	12	35	0.7%
DOGWOOD	CORNUS	DG	12	33	0.7%
KATSURA	CERCIDIPHYLLUM	KA	12	28	0.6%
MAPLE	ACER	MP	12	24	0.5%
SWEETGUM	LIQUIDAMBAR	SW	12	17	0.4%
ELM	ULMUS	EL	6	16	0.3%
JAPANESE STEWARTIA	STEWARTIA	JS	12	16	0.3%
SWEETGUM	LIQUIDAMBAR	SW	12	14	0.3%
ASH	FRAXINUS	AS	24	14	0.3%
APPLE	MALUS	AP	6	13	0.3%
LOCUST	GLEDITSIA	LO	12	13	0.3%
CHERRY	PRUNUS	CH	24	11	0.2%
ARBORVITAE	THUJA	AR	6	11	0.2%
OAK	QUERCUS	OK	12	10	0.2%
GINKGO	GINKGO	GI	6	7	0.1%

### Summary of Street Trees by Type and Size

COMMON NAME	GENUS	MAP CODE (LABELLED ON MAP)	DIAMETER (INCHES)	NUMBER OF TREES	%
UNGEN	TILIA	LI	6	26	0.5%
SPRUCE	PICEA	SP	6	4	0.08%
UNGEN	TILIA	LI	12	18	0.4%
PEAR	PIRUS	PE	12	18	0.4%
DOUGLAS FIR	PSEUDOTSUGA	DF	24	4	0.08%
WILLOW	SALIX	WI	6	3	0.06%
SKAUX	SCYRUS	SK	6	3	0.06%
BIRCH	BETULA	BI	12	3	0.06%
HORNBEAM	CARPINUS	HO	12	3	0.06%
SWEETGUM	LIQUIDAMBAR	SW	12	3	0.06%
AESCULUS	AESCULUS	HC	36	3	0.06%
BIRCH	BETULA	BI	6	2	0.04%
MAPLE	ACER	MP	12	2	0.04%
PIRUS	PIRUS	PI	12	2	0.04%
PIRUS	PIRUS	PI	12	2	0.04%
PLUM	PRUNUS	PL	24	2	0.04%
LIQUIDAMBAR	LIQUIDAMBAR	LI	24	2	0.04%
TILIA	TILIA	LI	36	2	0.04%
KA	CERCIDIPHYLLUM	KA	6	1	0.02%
MU	MULBERRY	MU	6	1	0.02%
RE	REDBUD	RE	12	1	0.02%
BT	BLACK TUPELO	BT	12	1	0.02%
CE	CEDAR	CE	12	1	0.02%
HC	HORSCHESNUT	HC	36	1	0.02%
MA	MAGNOLIA	MA	12	1	0.02%
HO	HORNBEAM	HO	12	1	0.02%
HO	HORNBEAM	HO	12	1	0.02%
RE	REDBUD	RE	12	1	0.02%
OK	OAK	OK	24	1	0.02%
OK	OAK	OK	24	1	0.02%
PI	PINE	PI	24	1	0.02%
PE	PEAR	PE	24	1	0.02%
RE	REDBUD	RE	24	1	0.02%
CH	CHERRY	CH	30	1	0.02%
OK	OAK	OK	30	1	0.02%
OK	OAK	OK	36	1	0.02%

## Street Tree Inventory Map Symbols

### Tree Size Ranges

- 6-12 inch diameter
- Greater than 12 inch diameter

### Other Trees Shown on Map

- Private or Non-Street Tree (206 Trees)
- Heritage Tree, Private (9 Trees)
- Trees with Poor Condition Rating (40 Trees)
- Stump or Dead Tree (20 Trees)

## Street Tree Inventory by Type (4,774 Trees)

- Map is labeled with 2-letter code

MAPLE, ACER, MP 1,927 Trees	KATSURA, CERCIDIPHYLLUM, KA 29 Trees
ASH, FRAXINUS, AS 583 Trees	ELM, ZELKOVA, EL 16 Trees
PEAR, PYRUS, PE 545 Trees	JAPANESE STEWARTIA, STEWARTIA, JS 16 Trees
OAK, QUERCUS, OK 316 Trees	APPLE, MALUS, AP 15 Trees
LOCUST, GLEDITSIA, LO 227 Trees	ARBORVITAE, THUJA, AR 10 Trees
PLUM, PRUNUS, PL 189 Trees	GINKGO, GINKGO, GI 7 Trees
CHERRY, PRUNUS, CH 187 Trees	BIRCH, BETULA, BI 5 Trees
LINDEN, TILIA, LI 178 Trees	CEDAR, CEDRUS, CE 4 Trees
HORNBEAM, CARPINUS, HO 146 Trees	DOUGLAS FIR, PSEUDOTSUGA, DF 4 Trees
SNOWBELL, STYRAX, SN 101 Trees	PINE, PINUS, PI 4 Trees
BLACK TUPELO, NYSSA, BT 73 Trees	SPRUCE, PICEA, SP 4 Trees
REDBUD, CERCIS, RE 61 Trees	HORSCHESNUT, AESCULUS, HC 3 Trees
BEECH, FAGUS, BE 46 Trees	MAGNOLIA, MAGNOLIA, MA 3 Trees
SWEETGUM, LIQUIDAMBAR, SW 36 Trees	WILLOW, SALIX, WI 3 Trees
DOGWOOD, CORNUS, DG 34 Trees	MULBERRY, MORUS, MU 2 Trees

## Four Most Common Street Trees in West Linn

MAPLE	PEAR
ASH	OAK

Reference: Portland Tree Inventory Program  
<http://www.portlandoregon.gov/parks/treetinventory>